

Great Shelford VILLAGE NEWS

EST 1999

AUGUST 2025

PRICE: 40p

Neighbourhood Plan – the final stage

Stapleford & Great Shelford
Neighbourhood Plan



REFERENDUM

4 September 2025



Your village • Your voice • Your vote

Full voting details inside...

Looking back at The Feast

Professor John Davis 1923–2025

| CONTENTS | | | |
|---------------------------------------|----|--|----|
| Parish Council Minutes | 1 | WI | 29 |
| Planning Applications | 3 | 2G3S | 32 |
| Parish Council Meetings in August | 3 | Cambridge Flower Club | 34 |
| Neighbourhood Plan Referendum | 5 | Shelford Country Market | 35 |
| Bus Service Change | 7 | British Cactus and Succulent Society | 35 |
| Shelford School | 9 | Nothing Stops Hetty | 36 |
| Parish Church | 11 | Mini-invasion of Shelford | 38 |
| 2G3S Picnic | 13 | Cardiac Rehabilitation | 39 |
| The Feast | 15 | John Davis Obituary | 41 |
| Free Church | 19 | Rainbows, Brownies and Guides | 42 |
| Old News | 20 | Shelford Fun Run | 44 |
| Pippa Heylings MP | 22 | Football Club | 46 |
| Care Network Cambridgeshire | 23 | Tennis Club | 48 |
| Granta Medical Practices | 23 | Cricket Club | 49 |
| Diary, Bins etc | 26 | What's on in August | 50 |
| Next issue of the <i>Village News</i> | 26 | How to contact the <i>Village News</i> | 51 |
| Library News | 27 | Rainfall | 52 |
| Great Shelford Village Charity | 29 | Local Organisations | |

| GREAT SHELFORD PARISH COUNCIL | | | | | |
|---|--|--|-----------------------|-----------------------------------|----------------|
| CHAIR | | Malcolm Watson | VICE CHAIR | John Stanton | |
| CHAIRS OF SUB-COMMITTEES | | | | | |
| Planning | | Roberto Ghersemi | Highways | | Timothy Mann |
| Building & Grounds | | Malcolm Watson | Cemetery & Allotments | | Angela Niblett |
| MEMBERS | | | | | |
| Paula Arnold | | Peter Brown | Barbara Kettel | Angela Muttu | |
| Barrie Ashurst | | Justin Curtis | Howard Kettel | | |
| CLERK | | Nicola Webster clerk@greatshelfordparishcouncil.gov.uk 01223616622 | | | |
| To email Parish Councillors, use: firstname.surname@greatshelfordparishcouncil.gov.uk | | | | | |
| DISTRICT COUNCILLORS | | Peter Fane | 07802 256861 | William Jackson-Wood 07873 731597 | |
| COUNTY COUNCILLORS | | Peter Fane | 07802 256861 | Laurence Damary-Homan | |

GREAT SHELFORD PARISH COUNCIL

greatshelfordparishcouncil.gov.uk

SUMMARY FROM THE UNADOPTED MINUTES OF THE MEETING ON 18 JUNE 2025

PUBLIC PARTICIPATION SESSION

A member of the public reported that she had been stung repeatedly by the bees at Stonehill allotment. She said that the bees seem to be more aggressive than previous years and queried whether this is due to the management of the bees.

NEIGHBOURHOOD PLAN

Proposed motion: that Great Shelford Parish Council herewith accepts the independent examiner's recommended modifications to the Stapleford and Great Shelford Neighbourhood Development Plan 2024-2041 and agrees to proceed to referendum. Jenny Flynn provided an update regarding the independent examiner's report and recommended modifications to the plan. There was a discussion regarding the removal of the views policy. The Great Shelford Parish Council accepted the independent examiner's recommended modifications to the Stapleford and Great Shelford Neighbourhood Development Plan 2024-2041 and agreed to proceed to referendum.

ANNUAL REPORT FROM THE SHELFORD AND STAPLEFORD YOUTH INITIATIVE (SSYI)

John Greaves provided a report on the activities of the SSYI together with their grant request, which is smaller than in previous years. The request for the grant of £15,700 was approved.

REPORTS FROM COUNTY & DISTRICT COUNCIL MEMBERS

District Cllr Fane reported on the options for local government reorganisation and the upcoming consultation. He also discussed the amendment to the definition of green belt in the recent changes to the National Planning Policy Framework. There was a discussion regarding the 'red line area' for the Cambridge Growth Company, the South Cambridgeshire District Council Green Belt policy and the East-West Railway (EWR) plans. District Cllr Fane presented an offer from David Allatt, Service Director for Highways, to attend a future Parish Council meeting.

There was a discussion regarding resurfacing and potholes, social care and Special Educational Needs services, legal services, traffic on Cambridge Road, the rollout of the new highway management software, and the ongoing Local Highway Improvement (LHI) and Privately Funded Highway Improvement

(PFHI) applications. Cllr Tim Mann will write to District Cllr Fane to explain the current situation regarding the LHI and PFHI applications.

HIGHWAYS AND TRANSPORT MATTERS

- Cllrs Mann and Stanton will represent the Parish Council at the LHI panel meeting and will prepare a 500-word statement. District Cllr Fane requested that this statement should be sent to County Cllr Damary-Homan, as he will be on this panel.
- A public inquiry has been called regarding Cambridge South-East Transport (CSET) to decide upon any actions. It was agreed that the Parish Council will not submit a statement of case to register to give oral evidence at the inquiry, but will rely on the statement of case prepared by Buxtons for Better Ways 4 Busways.
- A draft response was discussed to a request from Cambridgeshire County Council Infrastructure and Project Delivery Service for feedback on public rights of way in Great Shelford.
- Cllr Stanton provided a verbal update on the work of the Traffic and Transport Infrastructure Working Group. Cllr Brown reported that the statutory consultation regarding EWR has been deferred to 2026.

COUNCIL ADMINISTRATION MATTERS

- Draft plans for the cemetery extension with the removal of the children's area were accepted.
- The Clerk and Cllr Niblett will meet with the beekeeper at the allotments to discuss the issues with bees and decide upon any action.
- A quote from Aquamaintain for £15,230 +VAT for the improvement of the riverbank was approved.

COMMUNITY MATTERS

- Feast Day: A £50 gift voucher for the Square & Compasses will be purchased as a raffle prize and councillors will advise on their availability to man the Parish Council stand.
- The Clerk was requested to obtain quotes for fencing around Stonehill Road allotments.
- It was agreed that the Council will waive the fee for the Great Shelford Football Club Memorial football matches.
- A grant request of £3,500 for the Great Shelford Warden Scheme was approved.

| |
|--|
| <p>Full copies of the agendas and minutes of the Parish Council and Committee meetings can be viewed on the Parish Council website: greatshelfordparishcouncil.gov.uk/minutes-agendas</p> |
|--|

PLANNING APPLICATIONS

PARISH COUNCIL COMMENTS (23.06.2025)

| | | |
|--|--------------------------------|--|
| 25/00434/FUL | Chaston House, 1 Mill Court | Retrospective installation of an exhaust ventilation system, air conditioning units and plant enclosure. |
| Refusal recommended as the noise report does not meet the requirements from the Environmental Health Officer. The Planning Committee would like to see an updated report from him regarding the amended noise report and notes that there are still no comments on pollution and no air quality assessment. The application is also misleading as the drawing is incorrect and the picture is old and no longer correct. | | |

| | | |
|---|-----------------------------|---|
| 25/02256/FUL | Land at 26 Granhams Road | Demolition of existing dwelling and erection of one replacement dwelling. |
| Application supported as it is good use of space that has no negative impact on the street scene. | | |

| | | |
|--|-------------------------------|---|
| 25/02315/PRIOR | Acacia Court, Chaston Road | Refurbishment and conversion from offices to two one-bedroom flats. |
| Application supported as it is good use of space which meets the housing needs of the community. | | |

PARISH COUNCIL MEETINGS IN AUGUST

| | | |
|---------------------------------|---------------|---------------|
| Planning Committee | 11 Aug 7.30pm | Memorial Hall |
| Cemetery & Allotments Committee | 13 Aug 7.30pm | Pavilion |
| Planning Committee | 20 Aug 6.30pm | Memorial Hall |
| Finance & General Purposes | 20 Aug 7.30pm | Pavilion |

Meetings may be adjourned for up to 15 minutes when the public can ask questions and put forward points of view related to business on the agenda or for items they wish to raise for future agendas. No decisions can be made in this section of the meeting.

JO ALEXANDER

Meticulously designed and ethically sourced
furniture for your garden

Visit us at Childerley Estates
www.joalexander.co.uk



David Levy
MSSCh MBChA

**Chiropody
and
Podiatry**

**Home Visiting
Service**

Mobile: 07966 136972
Home: 01223 834634
01223 459239

DAVID FOX CARPENTRY

*Purpose-made
joinery and fitted
furniture*

Unit 4 Granta Terrace
Stapleford
Cambridge

01223 845143

sawstoncarpet andflooringltd

Carpets - Sisal - Vinyl
Wood - Laminate
Karndean - Amtico - Moduleo

**Mon-Fri: 9am-5pm
Sat: 9am-4pm**

Unit 34, Eastern Counties Leather Site,
London Road, Pampisford CB22 3EE
Tel 01223 837005

sawstoncarpetsandflooring@gmail.com
www.sawstoncarpetsandflooring.com

NICHOLAS CLIFFE & CO CHARTERED ACCOUNTANTS

Business Advisers for South Cambridgeshire

Accounts, Audit, VAT & Tax Advice

WE WANT TO HELP YOUR BUSINESS GROW

Realistic Fees

We offer a free initial meeting and business 'health check'.

Mill House, Mill Court, Great Shelford
Tel: 01223 471576

www.nicholas-cliffe.co.uk

Stapleford & Great Shelford Neighbourhood Plan



REFERENDUM

4 September 2025



Neighbourhood plans give communities direct power to shape growth in their local area in line with local priorities. They are based on community consultation and written by residents.

It is now up to everyone living in our parishes to decide whether you want our Neighbourhood Plan to come into force.

If you choose to vote in the referendum, you will be asked:

Do you want South Cambridgeshire District Council to use the neighbourhood plan for Stapleford & Great Shelford to help decide planning applications in the neighbourhood area?

If a majority vote 'yes', our Plan will be adopted and have the same legal status as the Local Plan in all planning decisions.

A majority 'no' vote means that it will be disregarded.

Please come along and use your vote!
In person (with ID) - by post in advance - by proxy

See your polling card for more details, and visit
<https://bit.ly/4lyPrkE> or scan the QR code to
view our Neighbourhood Plan.





NEIGHBOURHOOD PLAN REFERENDUM: THE MOST IMPORTANT UPDATE ON OUR PLAN THAT I'M EVER GOING TO WRITE

In the nearly four years that I have been updating you on progress with the Stapleford & Great Shelford Neighbourhood Plan, this will be my lowest key entry. It is also the most important. By the time you read this, both parish councils will have entered a pre-referendum period of 'purdah' in which they must exercise caution in making announcements that could influence the outcome of a democratic vote. I am not a councillor but my role as Chair of the Neighbourhood Plan Steering Group – a group formed to produce a plan on behalf of our parish councils – puts me in a difficult position. I will, therefore, stick solely to the facts.

What is a neighbourhood plan?

Neighbourhood planning is a way for communities to take a proactive approach to deciding the future of the places where they live and work. Communities can use a neighbourhood plan to help shape the future development and use of land in their neighbourhood. This includes the development of homes, green spaces, amenities and infrastructure.

Nearly 1,500 neighbourhood plans have so far been adopted in England. Nine of these are in South Cambridgeshire, where a further 17 are at various stages of production.

Stapleford & Great Shelford Neighbourhood Plan is at its final stage

The Stapleford & Great Shelford Neighbourhood Plan has passed independent examination. South Cambridgeshire District Council has agreed that it meets the 'basic conditions' legally required of it and that it can proceed to community referendum. This is the final stage of the neighbourhood plan process and it is now up to residents to vote in a community referendum on whether you would like the Stapleford & Great Shelford Neighbourhood Plan to come into force.

Arrangements for our community referendum

The referendum is scheduled to take place on **4 September 2025**. Everyone aged 18 and over who is registered and entitled to vote in local elections and lives in either the parish of Stapleford or Great Shelford can vote¹. Voting may be done in person (with ID), in advance by post, or by proxy. In-person voting

¹ If you are not registered to vote, you can do so online at www.gov.uk/register-to-vote. You will need to do this at least 12 working days before the referendum.

will take place between 7am and 10pm at:

- Stapleford residents: Sheltered Housing Communal Building, Cox's Close (off Church St), Stapleford, CB22 5SP
- Great Shelford residents: Memorial Hall, Woollards Lane, Great Shelford, CB22 5LZ.

Look out for your polling card for more details.

A simple yes/no vote

If you choose to vote, you will be asked the following question:

Do you want South Cambridgeshire District Council to use the neighbourhood plan for Stapleford and Great Shelford to help decide planning applications in the neighbourhood area?

You will be able to vote 'yes' or 'no'. If more people vote 'yes' than 'no', SCDC will adopt the Stapleford & Great Shelford Neighbourhood Plan and it will become part of the development plan for South Cambridgeshire, giving it the same legal status as the Local Plan. Our Neighbourhood Plan will then be used when making decisions on all planning applications within our area. If more people vote 'no' than 'yes' in the referendum, then planning applications will be decided without regard to our Neighbourhood Plan.

How can I find out more about the Neighbourhood Plan?

You can view the Stapleford & Great Shelford Neighbourhood Plan and its supporting documents on SCDC's website at <https://bit.ly/4lyPrkE>.

Please come along on 4 September and use your vote!

Jenny Flynn

Chair of the Stapleford & Great Shelford Neighbourhood Plan Steering Group

BUS SERVICE CHANGE

The No 31 bus service was withdrawn on 30 June and replaced with the 17 service running between Guilden Morden and Drummer Street. There will still be four journeys per day (Monday to Saturday but not public holidays) but each way will be running at revised times. The route and stops are still the same through Hauxton, the Shelfords and Stapleford, but now they now all go on to Cambridge, Drummer Street. In the opposite direction, the bus goes to Royston, calling at the bus station and also Tesco and the Gateway retail park. This is the first direct bus to Royston since the one day a week Wednesday service (the 139) stopped running in the early 2000s. The service will be run by A2B under contract to Cambridge & Peterborough Combined Authority. The timetable for the No 17 service can be seen on the A2B bus & coach website.

John Wakefield

CHIMNEY SWEEP

07919 888990

Local, professional & insured

Certificates issued

Advice given

Problems solved

edcleansweep@gmail.com

www.edcleansweep.co.uk

Bird guards fitted

Chimney repairs

**Shelford Massage****After over 30 years as a Physiotherapist
(Shelford Physio)****I have decided to move into massage
therapy****I can offer a relaxing or stronger massage
depending on what you require****Please call Stephanie Hatter 07789635181****email shelfordmassage@gmail.com****SAM
McGUINNESS****Curtain Making
Roman Blinds
Sofa Covers**Call or email
for a free quotation

07803 737518

samcampbell39@hotmail.com

Great Shelford Local Store**A great deal more from your local store!**

General Groceries • Fresh Produce • Confectionery

Instore Bakery • Off Licence • Photocopying

Newspapers • Magazines • Stationery • Dry Cleaning

Helium Balloons • Party Goods • Passport Photos

Full Post Office counter facilities

33-35 Hinton Way, Great Shelford

Tel: 01223 843307

Shop Opening

Mon-Sat

07:00 - 20:00

Sunday & Bank Holiday:

08:00 - 18:00

**POST
OFFICE**

Post Office Opening

Mon-Sat

07:00 - 20:00

Sunday

09:00 - 18:00

TAYABALI & WHITE

ACCOUNTANCY | TAX | CONSULTING

5 High Green, Great Shelford, Cambridge CB22 5EG

Telephone: **01223 843324**Email: **enquiries@tayabali-white.co.uk****Daniel Anderson
Friendly Gardening
Services****No job too big
No job too small
Affordable rates
07852 971 696
andersongardening@
outlook.com**

SHELFORD SCHOOL

Shelford School has been a hive of activity throughout the second half of the summer term. Much of which has been linked to the curriculum thread of **curiosity** – an appropriate theme for this time of year. Not only have pupils observed tadpoles growing towards ‘frog-hood’ and caterpillars changing into butterflies, but they too have been engaged in transition.

On the day when Year 6 pupils visit Sawston Village College to prepare for their move in September, the pupils at Shelford spend a morning in their new class getting to know their new teacher for the coming year. Rainbow children have also been able to spend time becoming familiar with different parts of the schools in preparation for ‘starting school’ in September.

With sights set on the end of term the number and range of activities increased - the Year 6 production, Sports Day, the School Fair, and a Sushi Workshop for Year 6 pupils organised by our school meals provider have already taken place.

Many of the enrichment activities are organised or supported by the school’s PTA who, in addition to the School



Fair, arranged a Campout on the school field in June, ran a stall at the Shelford Feast and valiantly supervised the children’s disco in the Feast marquee.

Those who attended the Feast on the 6th of July may have heard the school choir perform (with thanks to Lucy and Trevor Barlow and Hetty Bell). The choir, together with the school orchestra, will give another concert in school before the end of term.

The term will end with the traditional Leavers’ Service in St Mary’s Church – a fitting event for Year 6 pupils to mark their transition to secondary school after seven years in Shelford School. We wish them well.

*Polly Stanton
Foundation Governor*

CHURCH STREET VETS

Independent vets now open!

For more information or to register
visit churchstreetvets.co.uk



Church Street,
Stapleford,
CB22 5DG
01223 776773



Fitzbillies

FOR
EVERY OCCASION

Chelsea Buns
Cakes
Afternoon Tea

IN CAMBRIDGE
OR BY POST

www.fitzbillies.com

 **J. COX** | HEATING & PLUMBING

*We are happy to offer
a no obligation quote
for any heating or
plumbing work.*

Phone:
07763 657643

Email:
[info@jcoxheatingand
plumbing.co.uk](mailto:info@jcoxheatingandplumbing.co.uk)

[www.jcoxheatingand
plumbing.co.uk](http://www.jcoxheatingandplumbing.co.uk)



TIM PHILLIPS & Co Ltd Accountants

Independent, specialist service for:

Small Business

Self Assessment

Personal Taxation

FREE initial consultation – NO OBLIGATION
Easy to find us – map on website. FREE PARKING

Copley Hill Business Park
Off A1307 between Wandlebury and Babraham

01223 830044

info@TPaccounts.co.uk TPaccounts.co.uk



The Parish Church of
St Mary the Virgin, Great Shelford

Charity No: 24545

ST MARY'S MUSINGS



This month in church we are pausing a lot of regular activities as many of our families will go away on annual holiday. It is a time for recuperation and refreshment. Getting away gives us time to reflect and reset from a perspective that is different from the usual routines. For anyone not planning a holiday, a day out such as the 'Day at the Seaside' can offer the same, albeit shorter, time to recuperate, reflect and restore us. (See 7 August below.)

This month the church also offers some feast days to refresh us. On Sunday 17 August, we will be celebrating the Feast of the Blessed Virgin Mary, our patronal festival. Mary is both God-bearer and the nurturer of the church. This feast day inspires us to shape our church in the spirit of compassion.

On Sunday 24 August we also enjoy the feast day of St Bartholomew (also known as Nathanael). He is one of my favourite saints. He didn't do any great sensational deeds, but Jesus recognised him as a person of integrity. He started off like many of us, expressing scepticism and questioning whether anything positive could originate from Nazareth. Upon meeting Jesus, however, his pursuit of truth was acknowledged as a genuine commitment to authenticity and integrity, free from deceit. He wanted evidence, and Jesus invited him to see for himself rather than instructing him what to believe. This encourages us to think for ourselves as well as inviting us to be receptive to truth wherever it comes.

A further opportunity for refreshment this month is offered as St Mary's Church invites you to Choral Evensong on Sunday 24 August at 5pm, led by Rev Sarah West with music from The Byrd Choir. This event marks the return of Evensong to St Mary's, responding to several requests from the community.

Rev Julie Norris

St Mary The Virgin Church is open daily for prayer from 9am to 4.30pm.

| | |
|---|--|
| Sunday 3 August (Seventh Sunday after Trinity) | |
| | 8am Holy Communion using the Book of Common Prayer. 10am Sung Parish Communion including a Sunday Club for children which meets in the Community Room for activities during part of the service and then rejoins the church service for Communion. |
| Monday 4 August | |
| | 8.30am Morning Prayer at St Mary's. This is a half-hour service of prayer. You are welcome to join us. |
| | The Pilgrim Group is pausing for August. |
| Thursday 7 August | |
| | 8.30am 'A Day at the Sea' Church trip to Aldeburgh Free time at Aldeburgh 10am to 1pm. 1pm Lunch in The Wentworth Hotel (2 courses + coffee & mints). The whole day including travel and lunch costs £60. This is being organised by Trevor Ward 07910 747306. Book early to get a place. |
| Sunday 10 August (Eighth Sunday after Trinity) | |
| | 8am Holy Communion using the Book of Common Prayer. 10am Parish Communion on the theme of 'Be Ready' including Sunday Club for children. |
| Monday 11 August | |
| | 8.30am Morning Prayer at St Mary's. |
| Thursday 14 August | |
| | 8.30am Morning Prayer at St Mary's. |
| Sunday 17 August Patronal Festival, Feast of The Blessed Virgin Mary | |
| | 8am Holy Communion using the Book of Common Prayer. 10am Sung Parish Communion including Sunday Club for children. |
| Monday 18 August | |
| | 8.30am Morning Prayer at St Mary's. |
| Thursday 21 August | |
| | 8.30am Morning Prayer at St Mary's. 11am Cambridgeshire Care Home Service. The St Mary's Team will hold a Service of Holy Communion in the home. |
| Sunday 24 August (Feast of St. Bartholomew) | |
| | 8am Holy Communion using the Book of Common Prayer. 10am Sung Parish Communion including Sunday Club for children. 5pm Choral Evensong sung by the Byrd Choir. |
| Monday 25 August | |
| | 8.30am: Morning Prayer at St Mary's. |

| | |
|--|--|
| Wednesday 27 August | |
| | 7pm Space to Be a Quiet Time in Church. We meet in the Church for led contemplative prayer. |
| Thursday 28 August | |
| | 8.30am Morning Prayer at St Mary's. |
| Sunday 31 August (Eleventh after Trinity) | |
| | 8am Holy Communion using the Book of Common Prayer. 10am Parish Communion including Sunday Club for children. |

In addition to the normal Sunday services at 8am and 10am, there is a **Zoom service** each Sunday evening at 6.30pm. The Zoom link is on the weekly Pew Sheet and website. Choral Evensong is returning as a regular service held on the 4th Sunday of each month

Please Note: There will be no **coffee morning** at the Community Centre during August. The **Pilgrim Group** will not meet during August; the next meeting will be on 1 September.

Thought for the month: 'What good is the warmth of summer, without the cold of winter to give it sweetness?' *John Steinbeck*

For more information about Great Shelford Parish Church

Vicar: Revd Dr Julie Norris

Revjulienorris@gmail.com

Website Administrator: David Wilding

wildingdavid1@gmail.com

2G3S PICNIC

Wednesday 20 August: Pump up your tyres, pack your flask and join 2G3S for a trundle to picnic at Haslingfield Meadow, near the Methodist Church. We'll meet at Stapleford Pavilion at 10am and ride together, pausing at Mohak cafe in Haslingfield for emergency provisions. Then it'll be back to Stapleford - total distance about 15 miles.

The route contains a mix of quiet roads and traffic-free trails, bumpy and smooth. Families welcome, so long as children are accompanied by a responsible adult. Please email Yasmin to book in advance:

greener@sawston.org

THE GOG

FARM SHOP
ESTD • CAMBRIDGE • 1919

BUTCHERY • DELICATESSEN • GROCERY • CAFÉ

WWW.THEGOG.COM

SIMON SPARROW

**CARPENTER
AND JOINER**

22 Woollards Lane
Great Shelford
Cambridge CB22 5LZ
Tel: 01223 842380



D Hatter The Gas Specialist



Carbon Monoxide Kills
75% of last year's poisonings
were due to lack of servicing!
.....

D Hatter, specialist in servicing,
repairs and installation of
DOMESTIC gas appliances
including boilers, fires
and cookers.
.....

Improve efficiency, save fuel,
give your central heating
system a new lease of life,
have it POWER FLUSHED.

t: 01223 844866
m: 07747 444 435
e: davidhatter1@aol.com
w: thegasspecialisttd.co.uk



angli-EAR
Hearing & Tinnitus Solutions

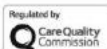
Hearing services

Our services include:

- Diagnostic testing
- Hearing aids
- Tinnitus treatment
- Earwax removal
- Cochlear implants
- Paediatric care
- Balance & Vestibular



BOOK YOUR
FREE
EAR HEALTH
CHECK TODAY



Audiology House, 15 Woollards Lane,
Great Shelford, Cambridge CB22 5LZ

01223 661 399 • www.angliearhearing.co.uk

THE FEAST

A friend of mine saw me dragging a trolley around the recreation ground. ‘How are you doing?’

‘I’m worn out.’

‘But it’s only the second day of the Feast!’

‘It’s actually the 365th ...’

Because organisation of the Shelford Feast starts even before the previous one has finished. It’s a year-long process booking bands and acts, describing what went right and what went less well, always how we can improve ...

This year we worried about something we can’t predict – the weather. The downbeat BBC forecast promised thunder and lightning for much of the Feast Day and with heavy hearts we made wet weather plans accordingly. With the sun shining brightly at 6am we thought all might be well, but at 11am the skies darkened and by 12 rain was falling amidst distant thunder. Not the best weather to encourage people to make merry. Would we be left with piles of food and drink? Would we have to hide in the marquee?

But no, the bravest came first, wielding umbrellas and boots, unfazed by heavy showers. These were young people who were used to Glastonbury mud, or older folks whose experience told them that downpours don’t last. And so it was. As the weather lifted and started to return to the sunshine we’ve been used to this summer, so came the others. No activities were cancelled, all the meat was cooked and eaten, the bar was as busy as it can be and the vast majority of people were meeting up on the rec as if there had never been any doubt about the conditions. And that positive atmosphere stayed for the rest of the sun-soaked, energy-packed community week.



On the rec

In the past some customers seemed unaware that The Festival and Feast is run by volunteers. So you'll find that the blue shirts of the volunteers have VOLUNTEER written on the back. Just so you know! It's the volunteers who make the whole show possible, and there were maybe 100 of them at different points in the week, serving food and drink to packed crowds, manning stalls, building bars and kitchens, collecting litter, including the team who set up our ovens and rotating spits, on duty at 4am, and who know that it's an all-night job producing a very good product. So THANKS to all of you who helped! There are too many to thank here but so many who deserve it!

So yes, it is the village's premier community event, with meat for the famous Sunday roasts supplied locally (Barker Brothers, many thanks!) and cooked on site. Not forgetting the Deli who supply the popular frittata and Zara who served up a splendid Indian meal on Thursday night.

But apart from Feast Day itself, the week-long festival had something for everyone. Even to simply list the events gives a sense of the packed schedule. Scott Mills, Radio 2's DJ; a beer festival (at Jerry's Bar, remembering Jerry Brown who reactivated the traditional Feast in 1994) with 29 cask ales, 6 keg beers and six real ciders, many from local breweries; a quiz night with fifty teams, all fed in under 50 minutes; Sawston Youth Drama performances; Rattlesnake Johnny country music complete with line dancers; a comedy night with four stand-ups; Jason Donovan, who packed the marquee with 1100 people, many wide-eyed at seeing the poster boy of their youth and the ever-popular Back to The Eighties; Cambridge University Gospel Choir; and Anthems Ibiza Orchestra. How's that for entertainment?

And when we've drawn breath and the marquee has been taken away, the litter sent for recycling and the red shirts washed and stored, there are grants to be applied for. So far The Feast has given away £390,000 to local good causes and though it is never certain that we have made a profit until all the figures are in, we would hope to top £400,000 this year.





Drummers

If you represent a good cause which has a financial need and where a contribution would make a significant impact, then it may be worth applying for a grant. If you have made a contribution to the Feast, by volunteering or helping in some way, then it will be worth making an application on behalf of the young, the old or the needy. The application form is at www.shelfordfestival.org/grant-applications and the deadline is 30 September.



The Bunch

And if you contributed and helped us with this terrific week – thank you. Planning for next year has already started. We hope to see you at the next Shelford Feast!

Duncan Grey



Timber

Paving & fencing
Building materials

Aggregates

Decorating
Ironmongery
Hand tools
Garden machinery
Sales & services
Tree surgery

Foxcotte, Comberton Road,
Barton, Cambridge
CB23 7BA
Mon—Fri 7.30am—5pm
Sat 8am—1pm
www.foxcottecambidge.com
01223 263 702



Open Tues to Sat
29 High Street
Great Shelford
CB22 5FY

Phone: 01223 213162
Email: cara.coffee@romseymill.org

ANTONIO'S

32 Woollards Lane,
Great Shelford,
CB22 5LZ

Appointments:
ring
01223 843345
or use the
Nearcut app

Open Mon - Sat
For times see:
www.antoniosbarbers.com



• Home • Workplace • Public •

01223 430040

www.cambridge-evpoints.co.uk

Contact our experienced team for all your EV charging needs.



CAMBRIDGE
ELECTRICAL



After a buyer who loves
what you've done?

Best talk to Bidwells


BIDWELLS



PROUD SPONSORS OF SHELFORD RUGBY CLUB

01223 624 573
talktobidwells.co.uk



CHANGES

Looking back at records on my laptop, I see that over the years since I retired and took up voluntary work, I have written 52 articles on behalf of the Free Church for GSVN and 15 as a school governor. Fortunately, I love writing and have never been at a loss for what to put, as ideas have arrived in my head in time for each deadline. However, some things come for a season and then it is time to give thanks for what has been, and move on. The saying that no one is indispensable is true, and often it is only when we let something go that someone else comes to take it on. So this will be my last article as I prepare to step down from my various voluntary leadership roles, changing direction to do whatever God wants me to do next.

In this I have good examples to follow; I was recently reading about the bible character Abraham who at the age of seventy five ‘went out, not knowing where he was going’. Caleb, another courageous individual, at the age of eighty asked God for a new assignment, so he could bless and be a blessing. Many thousands of years later, God is still interrupting people’s lives and inviting them into his purposes and plans. It is also the case that God doesn’t necessarily choose people who seem equipped for a task to take up a role; to paraphrase Moses, ‘Here I am Lord – send someone else!’ Yet it is not our ability that God wants, but our availability. Neither does he want us to be a clone of whoever has gone before. He chooses individuals who are willing to let him shape them into the people he would have them be, regardless of any past failures or inferiority complexes.

I do however have a strong conviction of what my ‘new life’ will entail – let’s just say that I will still be very much out and about in Shelford, but accompanied by a furry golden companion on a lead! I look forward to seeing where God wants us to walk ... ‘And your ears shall hear a word behind you, saying, “This is the way, walk in it,” when you turn to the right or when you turn to the left.’ Isaiah 30:21

*Liz Jenkin
Elder*

EVENTS AT GREAT SHELFORD FREE CHURCH

SUNDAY SERVICES

Morning Services at 10.30am: Everyone welcome.

Café Church on Sunday 17 August at 10.30am: Informal family service seated around tables with refreshments served during our time together.

OTHER ACTIVITIES

Community Café on Monday 18 August, 10am–12noon Come join us for tea/coffee and homemade cake. Our next session after this will be on Monday 1 September.

Please note that over the summer, our Little Steps Toddler Group will not be running but we encourage those who are around to meet up with one or two of the team on Shelford Recreation Ground on Wednesdays, 10–11:30am for an informal time together. Our first ‘proper’ session back after the summer will be on Wednesday 3 September, 10–11:30am. Similarly, our baby group, Tiny Toes will not be running over August but will restart on Wednesday 3 September, 1.30–3pm. For more information and to book a place in either of these groups please email administrator@shelfordfreechurch.

Margaret Cletheroe, GSFC Administrator

OLD NEWS

Extracts from The Great Shelford Chronicle 1774-1868

*Compiled and re-published by Anne George, Glynis Trundle,
Margaret Ward and Alan Bullwinkle, 1993*

18 August 1849 NATIONAL SCHOOL ANNUAL FESTIVAL – On Tuesday last, the 14th inst. The children of Gt. And Little Shelford assembled on the premises of Mr. William Headly, in the afternoon, to partake of their annual treat, which is defrayed by contributions from those ladies and gentlemen who subscribe for the support of the School. There were present 74 boys and 72 girls, 16 of the boys and 2 girls being absent. Mr. and Mrs. Hopkins the master and mistress are entitled to the thanks of company present for their excellent arrangements. The children were regaled with tea, bread and butter, plum cake, and a glass of orange wine each, also a plum bun for each little boy and girl to take home. At the end of the meeting Rev. Charles George Coombe, curate of the two villages, addressed the little flock in a short and appropriate speech, and grace was sung by the children before and after the treat. The company present was numerous, consisting of ladies and gentlemen from the neighbourhood. The boys were seated under a large walnut tree, the girls under an old chestnut tree planted 70 years since by an old servant who lived and worked on the same farm more than 50 years



Dentons
Carpets & Flooring
Est 1969

Carpets - Flooring - Blinds



About Us

- ✓ Established in 1969
- ✓ Family run business
- ✓ Extensive showrooms
- ✓ In-house fitting team
- ✓ Knowledgeable sales team
- ✓ Reputable manufacturers
- ✓ Domestic and commercial

Quality Guaranteed

Free 'No-obligation' Quotes

91 High Street, Cottenham,
Cambridge CB24 8SD

01954 250189

 sales@dentonscarpets.co.uk

 www.dentonscarpets.co.uk

Early Morning Pilates Classes

Little Shelford Memorial Hall
CB22 5HG

Tuesdays 8.15 – 9.15am

Thursdays 7.30 – 8.30am

Later classes are currently fully booked
but you can join a waiting list

Email to book your class:

frances.pilates@gmail.com

www.believeinpilates.co.uk



Rainbow Pre-school

A unique place for
2-4 year olds to
play and learn in
Shelford

www.rainbowshelford.co.uk

Tel: 07985 216603

rainbow@shelford.cambs.sch.uk



LYNNE HORTON INTERIOR DESIGN

CURTAINS & BLINDS
FURNITURE & JOINERY DESIGN
UPHOLSTERY & SOFT FURNISHINGS
COLOUR & FABRIC SCHEMES
BATHROOM DESIGN
FURNITURE & LIGHTING SOURCING



www.lynnhortondesign.com

lynn@hortondesign.org

07703816370



PIPPA HEYLINGS MP

It really is shocking to think that a year has already gone by since voters in South Cambridgeshire put their faith in me to be their local champion in parliament and I'm so incredibly grateful to them. South Cambridgeshire is a wonderful place to live and work – with beautiful countryside, rivers and chalk streams and an economy driven by science and innovation that includes the largest biomedical research campus in Europe. It is a privilege to represent you and our area.

I hope you can see that I've hit the ground running. Right from the start, I've focused on what you told me matters most: fixing our local health services, tackling the cost-of-living crisis and protecting our environment. I'm proud that we've already had some important wins.

Alongside the hard work of many people, securing the green light from the government for the new Cambridge Cancer Hospital was a vitally important win for our area – but we have got to keep pushing to get spades in the ground. More hospitals alone won't mend our healthcare system, so I will continue to press the government to do more to fix social care.

The new government's plans for growth for our area, which propose significant new housing development and further growth of our world-leading life science and technology sectors, make it even more important for local people to have a say. I have been working with local councils and regional and national bodies to hold the government to account to ensure that there are enough GPs, A&E provision and public transport facilities to cater for our existing and new communities. I am pushing for the government to hold a ministerial roundtable here locally to tackle the water supply and sewage crisis which is a dealbreaker for this government's growth plans for our water-stressed area. Decisions made in the next few years must benefit the people of South Cambridgeshire, while ensuring that our wonderful local environment and nature are protected.

Helping constituents is a vital part of my work as an MP – and one of the most rewarding. Each week, my small team and I receive hundreds of emails with requests for help with problems or a response to issues constituents are passionate about. At the time of writing, we have now helped and closed over 7,000 cases from more than 5,000 constituents.

I will be out and about in our communities throughout the summer recess listening to residents and attending local events. I hope to see many of you on my travels. If you would like to sign up to my weekly newsletter to find out more about what I am doing in parliament, you can do so by going to pippaheytings.org.uk/newsletter.

CARE NETWORK CAMBRIDGESHIRE

Would you or someone you know benefit from wellbeing support?

Care Network Cambridgeshire's Wellbeing Service offers free, short-term support for adults (18+) in South Cambridgeshire who may be struggling with confidence, isolation, illness, or low mood. Our friendly team can provide one-to-one support and match individuals with trained volunteers who can offer companionship through phone calls or accompanying them to access the community. Support is tailored over 6–8 sessions, helping people regain independence and feel more connected.

If you or someone you know could benefit, making a referral is easy – just visit care-network.org.uk/wellbeing, contact us at wellbeing@care-network.org.uk or phone 0330 094 5750.

The Care Network is a registered Charity and governed by a Board of Trustees.

GRANTA Medical Practices

FLU VACCINATIONS 2025

It's that time of year again already! If you book your flu vaccine with us, we can also check that you are up to date with all the other vaccines you may be eligible for.

The flu vaccination programme starts in October for all eligible adults, except pregnant women and children, who will be offered the vaccination from late September. Pregnant women are vaccinated to protect both mother and baby in first few weeks of life. Children get flu earlier than adults as they are 'super spreaders'.

You should get vaccinated because:

- this can help protect you, your family and friends.
- everyone is susceptible to flu, even if you are in good health and eat well.
- you can be infected with the virus and have no symptoms but can still pass flu virus to others, including family and friends, patients or residents.
- the flu vaccine has a good safety record and will help protect you. It cannot give you flu.
- the impact of flu on frail and vulnerable patients can be fatal and outbreaks can severely disrupt communities, care homes and hospitals.



Professional Tree Surgeons covering
Cambridgeshire and Hertfordshire

Fully Qualified & Insured

01763 208361 / 07743406569
shelfordtreeservice.co.uk

Rothwell's Carpet Cleaning

Carpet Cleaning & Stone Floor, Upholstery, Rugs

A few points that make us stand out:

Rothwell's has been in business since 1993.

We're an honest local family firm.

Our large truck-mounted machines mean
more cleaning & drying power
for the best results possible.

Members of both the NCCA and TACCA.

We will move the furniture.

100% satisfaction or it's FREE.

Call Oliver and Max Campbell

for expert help today.

01223 832 928

www.Rothwells.biz



FULLY TRAINED,
INSURED AND
DBS CHECKED
CAT SITTERS



The Great Shelford Village Charity

Grants

We provide small grants in support of local
people and good causes

Almshouses

We provide affordable community housing for
local people - families, couples and individuals -
in housing need

Allotments

Available to rent for a nominal annual fee

We welcome donations supporting our work; see website



www.gsvc.org.uk

clerk@gsvc.org.uk

07979 184273



facebook

You are eligible for a free NHS flu vaccination if you:

- are aged 65 and over
- have certain long term health conditions
- are pregnant
- live in a care home
- are the main carer for an older or disabled person, or receive a carer's allowance
- live with someone who has a weakened immune system.

Additionally, eligible children include:

- children aged two to three years
- school aged children (reception to year 11)
- children aged six months to 17 years with certain long term health conditions.

This year we are also giving the Covid-19 vaccination at the same time as the flu, if you are eligible. You are eligible if you are:

- a resident in a care home for older adults
- aged 75 years and over
- aged six months and over and are severely immunocompromised

Flu Clinic dates

Saturday 27 September – Granta Sawston (children and pregnant women only)

Sunday 28 September – Granta Royston Health Centre (children and pregnant women only)

Saturday 4 October Granta Sawston

Sunday 5 October Granta Royston Health Centre

Saturday 11 October Granta Linton

Saturday 11 October Granta Barley

Saturday 11 October Granta Shelford

Saturday 18 October Granta Sawston

Sunday 19 October Granta Royston Health Centre

Saturday 25 October Granta Linton

Saturday 25 October Granta Shelford

All flu clinics run from 08.30 to 16.45

To book your flu vaccination please call 0300 234 5555 and choose the Granta site of your choice or wait to receive your SMS link via your mobile phone to book your appointment.

For further information about the flu vaccination please go to www.nhs.uk/vaccinations/flu-vaccine

*Sandra East, Head of Patient Services
cpicb.grantapatientservices@nhs.net*

DIARY AUGUST 2025

| Date | Event | Time | Place |
|------|---|-----------|-----------------------------|
| 13 | British Cactus & Succulent Society | 7.30pm | Memorial Hall |
| 19 | <i>Webuyvintage</i> (where unwanted antiques and jewellery can be sold) | 9-11.30am | Memorial Hall |
| 19 | 2G3S Book group meeting | 8pm | Three Horseshoes Stapleford |
| 20 | 2G3S Picnic | 10am | Meet at Stapleford Pavilion |
| | | | |

Country Market 9–11.30am, Memorial Hall, every Wednesday.

| | |
|---|---|
|  | BIN COLLECTIONS Black bins Tuesday 5, 19 August Blue bins and green bins Tuesday 12, 26 August |
|  | POST BOXES Coppice Avenue, Mill Court (Hinton Way), Library, Old Vicarage, Church St, High Green bus stop, Stonehill Road, Macaulay Avenue. Usual post box collections are 9am. The latest collection is from the Post Office at 4.45pm. |
|  | POST OFFICE The Post Office is at Great Shelford Local Store, 35 Hinton Way. Open Monday to Saturday 7am–8pm, Sunday 9am–6pm. |
|  | LIBRARY Monday 3–7pm, Tuesday 10am–1pm and 2–5pm, Wednesday 10am–1pm, Thursday closed Friday 10am–1pm and 2–6pm, Saturday 10am–1pm NB The library is closed on bank holidays. |

SEPTEMBER ISSUE OF THE *VILLAGE NEWS*

The deadline for copy for the next issue of the *Great Shelford Village News* is **Friday 15 August** and it should be available on **Friday 29 August**, with subscribed copies delivered shortly thereafter.

LIBRARY NEWS

Not planned your summer holidays yet? Then come into Great Shelford library, as we have lots of resources to help you. From travel books to gardening, barbecues to walking, there are books to help. As well as this of course, we have lots of wonderful fiction books to relax with on the beach or in the garden. For children, the Summer Reading Challenge continues, and it's not too late to sign up. Just pop into the library to get started on collecting your six stickers. Read just six books during the holidays to collect a certificate and medal.

We have four lovely events on during August to support the Summer Reading Challenge:

Tom's Midnight Garden Wednesday 6 August 2–3.30pm. Did you know that *Tom's Midnight Garden* was set in Great Shelford? Come and learn about Tom's garden, make his clock and design your own garden. Suitable for ages 5–10. £2 per child. Please pre-book and pay in the library or via Cambourne.referral@cambridgeshire.gov.uk

Lion Learners Wednesday 13 August 2–3.30pm. Come and learn about some amazing animals. Suitable for ages 5–10. £5 per child. Please pre-book and pay in the library or via Cambourne.referral@cambridgeshire.gov.uk

Garden Magic with Magician Steve Wednesday 20 August 3–3.30pm. Come and be entertained with tricks and laughs. Suitable for ages 4 years plus, £5 per child. Please pre-book and pay in the library or via Cambourne.referral@cambridgeshire.gov.uk

Garden Craft Wednesday 27 August 2–3.30pm. Come and make hedgehogs and pictures using garden materials. Suitable for ages 5+ £2 per child. Please pre-book and pay in the library or via Cambourne.referral@cambridgeshire.gov.uk

Please note parents and carers must stay with their children at all times during activities.

Mel Abbiss – Community Librarian

Opening times: See page 26.

Contact details: telephone 0345 045 5225

email Cambourne.referral@cambridgeshire.gov.uk

web www.cambridgeshire.gov.uk

travel counsellors



Check-in time?
Whenever you need us.

24/7 support no matter where you are, or what time you need us. At travel counsellors we're all about you. Your needs, wants and aspirations for far-flung celebrations - coupled with personal service beyond compare - you can always rely on me.

Cheryl Harradine
TRAVEL COUNSELLOR

01223 842670 / 07742272131
cherylh@travelcounsellors.com
www.travelcounsellors.com/cherylharradine

★ Trustpilot ★★★★★



WATERLILIES

SKIN CLINIC • BEAUTY

Call 01223 844700 Book online at www.waterlilies.org.uk

2d Dolphin Way, Off London Road, Stapleford, CB22

Art of Flooring

QUALITY FLOORING SUPPLY,
INSTALLATION & AFTERCARE

**Specialists in
Wood Flooring,
Carpets & Vinyl
Flooring Solutions**

"We've had a vinyl floor fitted in a loft bedroom. Sam and Nigel were excellent throughout. The whole experience was made very stress free due to their professionalism and the floor looks amazing. I would not hesitate to recommend The Art of Flooring."

Juliet Mills, Cambridge

01223 755 802

Please quote Great Shelford Mag

Best of
houzz
2020
SERVICE

Best of
houzz
2020
DESIGN

141 Milton Road Cambridge CB4 1XE
www.ArtOfFlooring.co.uk



WE'RE HIRING

WE ARE SEEKING CREATIVE & ENERGETIC PLAYWORKERS
FOR OUR BREAKFAST & AFTERSCHOOL CLUBS ACROSS CAMBRIDGE

HOURS OF WORK - 07.30-09.00 & 14.30-18.15 MONDAY TO FRIDAY

**£300 BONUS
AVAILABLE NOW!**

FOR EARLY APPLICANTS ONLY - SUBJECT TO SUCCESSFUL COMPLETION OF 12 MONTHS PROBATIONARY

PREVIOUS EXPERIENCE
IN CHILDCARE OR PLAYWORK DESIRABLE

ADDITIONAL HOURS ALSO AVAILABLE OUTSIDE OF TERM TIME,
IN OUR SCHOOL HOLIDAY CLUBS.

PAY RATE BASED ON EXPERIENCE, STARTING AT £12/HOUR
STAFF BENEFIT - FREE CHILDCARE

EMAIL: info@cambridgekidsclub.com
FOR FURTHER INFO & TO APPLY NOW!

GREAT SHELFORD VILLAGE CHARITY

The Great Shelford Village Charity has a two-bedroomed almshouse home in Great Shelford that will become available in September. Almshouse residents are ‘appointees’, not tenants, living in our almshouses under licence, paying a monthly maintenance contribution (MMC) rather than a rent. The Charity sets its MMC at 50% of the rental rate for similar private property in the village.

Applications are welcome for this almshouse from residents of Great Shelford, or those with a strong connection to the village, who are on a low income, in need of housing and capable of living independently.

Application forms may be requested via:

1 The Charity Clerk 07979 184273 *clerk@gsvc.org.uk*

2 John Huntingdon’s Charity 01223 492492 *office@johnhuntingdon.org.uk*
189 High St, Sawston, CB22 3HJ

3 Redmayne Arnold & Harris 01223 800860 *shelford@rah.co.uk*
30 Woollards Lane, Great Shelford, CB22 5LZ

Applications should be submitted to John Huntingdon’s Charity (JHC) by noon on 25 August 2025. They will be processed in confidence by JHC, and anonymised, before being forwarded to the Great Shelford Village Charity Directors for shortlisting. Shortlisted applicants will be invited to attend an informal interview.

Samantha Rigby-Coghlan, GSVC Clerk

WI

Our WI Summer events are based around gardens and teas.

Neil and Clare Callan have a beautiful garden near Somersham. They have shown us photographs previously at indoor meetings. Although their favourite irises were over in July and some roses were past their best, alstroemerias in the beds and petunias in pots created the colour. A strongly built climbing frame gave us a view of Ely Cathedral ten miles away while at low level we enjoyed the huge variety of plants and gazing at wildlife in the pond. In their garden, that is open as part of the National Garden Scheme, there are also interesting sculptures in varying materials. After extensive wandering we enjoyed welcome cups of tea, scones, jam and cream. A longish drive but lovely to be meeting in such a beautiful environment.



Our contribution to the Shelford Festival and Feast is to provide teas, coffees and cake to the many visitors on Feast Day. Cakes are cooked by WI members and several other Feast supporters for which we are very grateful. The range of recipes used was awesome from small cakes and decorated buns via ginger breads and fruit cakes to multilayer Victoria sponges and iced coffee and walnut cakes. A tribute to many cooks.

Just after 12noon the heavens opened for a short period and the tables and chairs that had been outside the Sports Pavilion were rapidly moved onto the veranda or into the Pavilion.

We soon had a steady stream of customers being served by a rota of WI members and other helpers; cake servers, tea makers, washers up and our treasurers at the till. Many thanks to Rosemary Livings and Anne Ashurst who masterminded the arrangements, and the Feast organisers for the provision of urns, large teapots, the crockery and other supplies. A real combined community effort.

We return to the Community Room at St Mary's Church on 4 September when Fiona Chesterton will give a talk on 'Secrets never to be told'.

On 2 October we will welcome East Anglian Air Ambulance for CPR training and how to use defibrillators. Neil Callan will be back on 6 November to tell us of another passion, 'The History of the English Silver Spoon'.

As usual visitors and prospective new members will be made very welcome from September at 7.30pm in the Community Room behind St Mary's Church, Great Shelford. Our programme can be found on our website:

<https://theshelfordswi.wordpress.com>

*Eleanor Witter
The Shelfords WI President*

Poorly PC?

The PC Doctor will get your PC back in tip-top health and squeaky clean!

PC Doctor Edward

(your local computer GP)

07 929 660 981






COACH HOUSE HEALTH CARE

Welcome to Coach House Health Care

– a refurbished and renovated clinic, situated in the grounds of Anstey Hall, where you can now find all your health and well-being practitioners under one roof.

- Podiatry/Chiropody
- Physiotherapy
- Osteopathy
- Sports Massage
- Clinical Psychology
- Plastic Surgery Consultations including skin lesion assessments
- Consultant Dermatology
- Clinical Hypnotherapy
- Medical Aesthetics
- Plastic and Cosmetic Surgery
- Electrocardiograms (ECG or EKG)



Animesh Patel, Plastic Surgeon and co-owner



Lorna Bacon, Podiatrist and co-owner

COACH HOUSE HEALTH CARE

The Courtyard, Anstey Hall, Mark Lane, Trumpington, Cambridge CB2 9LG

01223 340491

reception@coachhousehealthcare.co.uk

www.coachhousehealthcare.co.uk

Free car parking and wi-fi

CLINIC ROOMS AVAILABLE TO RENT

If you are a qualified practitioner, looking for a clinic to practise, contact us to find out how to join our team. We can now support CQC registered clinicians to use us as a location for their CQC registered procedures.



JASON KIRBY

Professional Painting & Decorating Ltd

All Aspects of Internal & External Decorating

Period, Residential & Commercial Properties.

Wallpaper & Mural Install

Kitchen Cabinet & Furniture Re-Sprays.

Floor Sanding & Restoration.

City & Guilds, NVQ Qualified.

Service, Quality & Reliability.



01954 211775

www.jasonkirbyltd.co.uk



Safe Ear Wax Removal

Accredited by UK Microsuction.
Member of British Audiology Association.

Sue Levy
Sawston

07779 674924

2G3S

Dr Bike continues to hold its volunteer-run weekly bike repair sessions at the Old Slaughterhouse in Stapleford, 3pm to 5.30pm every Tuesday. Children are welcome to come and learn how to look after their bikes and do simple maintenance and repairs, but please attend with them (for safeguarding reasons). For more information, contact drbikestapleford@gmail.com. You can also book a time slot at that address, though this is not essential. The group are considering providing one or two sessions at other times, and maybe a Back To School session at the end of the summer holidays – email them for details, or check our website.

Village weekend Our film showing of ‘Wilding’ attracted around 50 people, and we received very positive feedback on it. A low-productivity farm in Sussex with very depleted soil was transformed into a biodiversity hotspot, with rich soil teeming with bugs. Obviously we need to produce food on our land, and rewilding isn’t a good use of high-grade agricultural land, but our present large-scale intensive agriculture is ruining the soils which we all depend on. There is a growing interest in regenerative farming, which produces high quantities of food but in a more nature-friendly way.

Meet our MP A number of local ecogroups have worked together to meet regularly with our MP, Pippa Heylings, to ask questions about her views and actions on various topics. She will report back in February, at which point the group will have further ‘asks’ for her. Issues discussed and formed into ‘asks’ at the most recent meeting included warm homes, water, transport, wildlife and planning, renewable energy, access to green space, a fair transition to a green economy, anti-protest laws, and plastics. All these areas involve legislation or policies being worked on at present in government that Pippa can work to influence.

Our next **planning meeting** is on Wednesday 27 August. Email us at the address below for more details. We will be planning conversation evenings for the autumn and winter months as well as arranging our other regular activities.

Our next **Book Group** meeting is on Tuesday 19 August at 8pm, featuring a pair of books, ‘Life after Capitalism’ and ‘Prosperity without Growth’ by Tim Jackson. The group meets in the Three Horseshoes in Stapleford. Do come along if you are curious about how people can thrive without relentless growth.

Repair Cafés If you have items that have broken, don’t throw them away but wait for a repair café. We have two planned, one in Great Shelford Free Church on Saturday 20 September from 2pm to 5pm and one in Sawston in November. Bookings for Great Shelford can be made from 4 August at cambridgecarbonfootprint.org/events. Bring along your broken item and a skilled volunteer will

D.L.M. AUTOS

63a Orchard Road, Great Shelford CB22 5AA

MOT - SERVICE - REPAIR

01223 844828

www.dlmautos.co.uk



ENTIRE
GROUP



Water Safe
QUALITY ASSURED



The Complete Gas Heating and Plumbing Company

Plumbing • Heating • Gas
Bathrooms • Water Softeners
Property Maintenance

Tel: 01954 204044 • Web: www.entiregroup.co.uk
Email: service@entiregroup.co.uk



The Country Store

*Pet, Equine, Smallholder,
Shooting supplies,
Country clothing,
Wild bird food*

Unit 12a, Sawston Park,
Pampisford, Cambridge

CB22 3EE

www.thecountrystore.co.uk

Tel 01223 837977



Over 30 Years Experience

- Plaster Boarding
- Replacement Ceilings
- Gyproc Coving • Pebble Dash
- Listed Building Restoration
- Skimming • Skimming over Artex
- Rendering • Wet Dash
- Traditional Lime Render
- Insurance Work Undertaken

Andrew W Renton
18 Badcock Road, Haslingfield,
07720 715045
01223 873387

renton@awrplastering.co.uk

<http://www.awrplastering.co.uk>

Cambridge Cats Protection Making a better life for cats

Call 01223 528 312 to provide a forever home for a cat or kitten in our care. For neutering advice call 01223 236 188.



Cats Protection is a registered charity 203644 (England and Wales), SC037711 (Scotland) and is listed as a Section 167 institution by the Charity Commission of Northern Ireland. BG 1770

help fix it! We can tackle a wide variety of repairs including jewellery, electrical and electronic devices, as well as clothes and fabrics. Please do book in your item for repair – this helps us plan our schedule so we can avoid people having to wait and also means we can do our homework in advance to assess the repair. Please note that we will not be able to replace cracked screens on phones or tablets. The repairers are brilliant and can fix a lot of things but there are no guarantees. We will collect portable non-working (unfixable) electrical items and ensure these are properly disposed of. We will also have a stall to accept unwanted working electricals, run by Cambridge Carbon Footprint, so they can be checked for safety before being offered a new home.

Water As I write, we have had hardly any rain in months. Please try to save water: collect the water you run in the sink when rinsing vegetables and fruit and use it to water your plant pots, don't flush every time, have short showers, keep a bottle or jug of water in the fridge so you always have cold water to drink without running the tap. Any spare water you have is better poured on the garden to soak into the aquifer (or at least help plants grow) than put down the drain to go into the rivers and out to sea.

If you are interested in green matters, email mail2G3S@gmail.com to sign up for our monthly newsletter, or to get more information about our meetings. We are a friendly group and welcome anyone who wants to come along to one of our events or to find out more about how we can live sustainably. Also see our Facebook page and our website 2g3s.staplefordvillage.org.uk/.

Helen Hale

CAMBRIDGE FLOWER CLUB

Whittlesford Memorial Hall, Whittlesford CB22 4NE
on the third Thursday of the month at 7.15pm (refreshments 6.45pm)
Annual subscription £45, visitors £10 each meeting.

21 August 7.15pm **OPEN MEETING:** National NAFAS Demonstration
Kathy Stangaard 'Back to the Future'
Visitors £20, Members £15 for a 6.15pm start with finger
buffet, drink, stalls and raffle.
Tickets from Alison Drake – see below.

18 September Stephanie Laikng NAFAS Demonstrator: 'Inspired by'

Further information from co-chairs:

Alison Drake 01223 840117: drakealisonn@gmail.com

Freda Orgee 01223 891464: fredaorgee@gmail.com

SHELFORD COUNTRY MARKET

It's market as usual every Wednesday morning in the Memorial Hall during August. We don't close for holidays. In fact, during the month we welcome many visitors to the area, often including Country Market members from elsewhere. It is always a good opportunity to hear about other markets, compare prices and lots more.



As I write this, the really hot summer days continue. It's not ideal for the cooks in the kitchen, but much harder for the gardeners outside. Looking ahead, the effect of these high temperatures on the garden flowers, salad, fruit and vegetable crops is difficult to predict. We say to our customers, 'Please keep coming each week and see what we have but best to arrive early!'

Not being subject to the weather, the other market stalls are fully stocked so there is much to see. All our crafts are handmade and everything in the food section is homemade, with fresh baking, jams, marmalades and local honey. Don't miss our central display table. We have now moved on from featuring Shelford Feast and Wimbledon. What next? Come and see! Then end your morning at the Market with a cuppa and a cookie in our friendly café area.

To find out more about how the market operates, to become a producer or to place an order, email dorothy@woodlandsroad.plus.com or phone 01223 843946.

Dorothy Doel

BRITISH CACTUS & SUCCULENT SOCIETY CAMBRIDGE & DISTRICT BRANCH

August meeting: Wednesday 13 August in Great Shelford Memorial Hall, commencing at 7.30pm. Parking available nearby.

We welcome Alan Brown to our meeting this month. He will give an illustrated talk about his visits to Namibia, including the Etosha National Park, and will discuss Lithops (also known as Living Stone Plants).

Mainly Autumn flowering, lithops are fascinating – these succulent plants have interesting leaf shapes, colours and textures. There are up to 70 species and given the correct conditions they can live for many years. The growing season is summer and early autumn and they should not be watered outside this period.

At our meetings refreshments are available, as well as a raffle and cacti for sale. We look forward to meeting you there; you will be made most welcome.

Let's Grow Together.

Jacqui Arbon, Branch Secretary

NOTHING STOPS HETTY

Shelford Spokes stalwarts, Hetty and Dominic Bell, have just returned from an epic 1,000 mile fundraising ride in aid of Parkinson's UK. Diagnosed with Parkinson's three years ago, Hetty was looking for something more challenging than the club's regular Monday morning outings around the lanes of South Cambs. Why not Land's End to John O'Groats?

Accompanied on two wheels by Hetty's brother Paul, and supported by sister-in-law, Liz, driving their VW Camper, Hetty and Dom completed the ride in stages, clocking up 50 to 60 miles a day, the most recent stage being Wigan to John O'Groats.

'Believe it or not, the toughest bit wasn't Scotland but early on, labouring up the steep slopes in Devon. Maybe we just weren't used to it, but by the time we got to Scotland we were much fitter - so that was a doddle!' she says.

Hetty has form; since her diagnosis she has cycled long distances in Vietnam and Costa Rica, with Dom following in her wake. What a team!

Where to next, Hetty?

Brian Connellan
Shelford Spokes Cycling
Club shelfordspokes.co.uk



Parkinson's UK - every donation helps fund pioneering research, personalised support services, and campaigns for fair benefits and high quality health and social care.

Care For Trees



Qualified
Reliable
Insured
Affordable

For a free quote call **Mike Wallman** on 01223 846390 or email info@carefortrees.co.uk

FAMILY

Barker Bros

EST 1847

BUTCHERS



Packaging
Free
Vegetables
now on
Sale

QUALITY, LOCAL MEAT FOR EVERYDAY

43 High Street, Great Shelford

Tel: 01223 843292 www.barkerbrosbutchers.co.uk

J M R Electrical



**Electrical
Contractor**



All Domestic, Industrial &
Commercial work undertaken

21 Ashen Green, Great Shelford, Cambridge

Email: jmr.electrical@hotmail.com

Tel: (01223) 844680 Mobile: 07766 68 38 86

QUALITY BESPOKE PICTURE FRAMERS

**SIMON ROBINSON
& SON**

Professional, Friendly Service
Over 25 years' experience

Wide Selection of Frames
Conservation Materials Used
UV Protective Invisible Glass

Artwork/Photography
Needlework/Tapestry
Oil Paintings and
Canvases Stretched
Unusual Objects Framed
Made to Measure Mirrors

Limited Edition Prints Available

Tel. 01223 873123

Opening Hours:

Tues-Fri. - 9am-5.30pm
(Saturday - By Appointment)

www.robinsonframes.co.uk
lester@robinsonframes.co.uk

STUDIO 6, PENN FARM,
HARSTON RD,
HASLINGFIELD, CAMBRIDGE
CB23 1JZ
(AMPLE PARKING)

THE Rose

Simply great Thai food

for more information and menus visit:

www.therose-stapleford.co.uk

or call:

01223 843901

info@therose-stapleford.co.uk

81 London Road • Stapleford • CB22 5DG

MINI-INVASION OF SHELFORD



Did you know we had a mini-invasion in the first weekend of July? In many ways it was absorbed by the Feast goings-on, but it also involved a ceilidh at the Rugby club (see photo below) and visits to Lavenham, Audley End and a walking tour of the academic centre of Cambridge. We're talking, of course, of the French youngsters, single adults and families who came over to stay with us at the Shelfords (and even slightly further afield).

You'll know, perhaps, that the Duke of Devonshire (the family that still owns Chatsworth House) was persuaded by Prince Albert to fund the building of the Cavendish Physics Laboratory, out of which came the work leading to the discovery of the electron, the neutron and the structure of DNA? Well, that was a bit of an interesting revelation for the French Twinning group, who were enthralled by Tim, our guide. We had been similarly entertained when we were over at Verneuil-en-Halatte in May, when we were taken on a tour of the Chantilly palace and stables built by a (clearly mad!) Bourbon prince.



In fact, Tim's Cambridge tour was just the culmination of this year's exchange in which various individuals and families enjoyed promoting a terrific *Entente Amicale*, straining sometimes to squeeze out a few of their own words of French, or maybe to understand their guests' attempts to overcome some of our many English idiosyncrasies. We are not all fluent in each other's languages but the wish to create bonds across the nations and between the communities transcends many difficulties.

Do think about getting involved in the Twinning visit in 2026. We had a record number of folk this year, creating a full-to-capacity coach in May to make the trip to Verneuil and a very lovely group of French visitors who reciprocated this July. This included a surprising number of teenagers who were keen enough to make the trip without accompanying parents – relying on their own resources, which didn't necessarily include perfect English! Impressive.

Richard Bull

CARDIAC REHABILITATION

I am a Cardiac Rehabilitation Exercise Instructor and a Registered Nurse and am responsible for the running of five exercise sessions each week in Sawston Sports Centre. I run four of these sessions and another instructor runs one. They are called 'Heartwatch' and are available, upon referral, to people with certain heart conditions. I also lead two online sessions so people who cannot get to the gym may still attend.

The sessions are not 'support' groups. They are structured exercise sessions, where participants follow an individual prescribed programme tailored to them. We assess everyone referred prior to accepting them as they are not appropriate for all. Referrals can be made by Health Care Professionals including GPs, Physiotherapists, Practice Nurses, Hospital Doctors and Specialist Nurses and Cardiac Rehabilitation Programmes.

I have been doing this at Sawston for more than 20 years and, despite the serious nature of the exercise, the sessions are light hearted. Many people have been in the groups for years, despite experiencing other health related problems such as cancer, joint replacements and other types of surgery. Both I and the other instructor also hold the GP Referral for Exercise Qualification to enable us to instruct people with all types of health-related issues along with their heart conditions. We work within criteria set out by The British Association for Cardiac Prevention and Rehabilitation and have a website called Heartwatch (www.heartwatch.uk) where you may view further information and via which I can be contacted.

Christine Benson

FOOT PROBLEMS?**Celia Kenney**

(HCPC Registered Podiatrist)

Call 07939 227195**(For home appointments)**

Treatments cover:

Nail cutting and other nail conditions

Corn and callus removal/reduction

Fungal infections and athletes foot

Verrucae/warts

The Beechwood Practice

Cambridge CB2 1NT

Call: 01223 315541**GC
GARDEN DESIGN**

Refresh your existing borders

Design consultation on-site

Full design service

Sustainable . Eco-friendly . Bespoke

www.gcgd.co.ukcontact us: **info@gcgd.co.uk****TMElectrical**
SERVICES**The Complete Electrical Service****Solar PV - Battery Storage - Vehicle Charging****Local - Experienced - Competitive****E: enquiries@tm-electrical.com****www.tm-electrical.com****Tel: 01223 441111****FREE ESTIMATES***Christopher*
LOCKSMITH**ARE YOUR LOCKS BEHAVING BADLY?**We Value Old Fashioned Customer Service
A Local Trusted Family Business Since 1989

Specialist in UPVC & Wooden Doors

No Call Out Charge

No Fix No Fee

All Work Fully Guaranteed

10% Senior Citizen Discount



For More Advice & Help

Call Christopher:

07772 111 222**www.christopherthelocksmith.co.uk****MegaStorage****SAFE & SECURE SELF STORAGE****Self Storage in Sawston****Clean, Dry & Secure, 24/7 Access****ssa**
self storage
association
United Kingdom**www.MegaStorage.co.uk****01223 833 777**

PROFESSOR JOHN DAVIS 1923-2025



Professor John Davis came to live in Great Shelford in 1979 after taking up the new post of Foundation Professor in Paediatrics at the University. He moved into Four Mile House, adjacent to the Kings Cross railway line, on Cambridge Road. Four Mile House was said to originally have been an inn before becoming a level crossing keeper's cottage and then the home of G.G. Coulton, a fellow of St John's College. This prior occupant was said to be pedantic and crotchety, even smacking his six-year-old daughter when she said she'd seen a fairy, unlike its subsequent occupant who was kind with a strong moral compass.

In fact Colin Morley, who also lives in the village and worked alongside John for many years, told us that, for him, John's most important contributions to paediatrics were to bring compassion, empathy and kindness to the care of children and their parents, and a local parent backed this up saying he was the only paediatrician that didn't make her sick baby cry.

Professor Davis conducted pioneering research into the respiratory systems of newborns and into apnoea, a condition in which a baby temporarily stops breathing. He was also Chairman of the Foundation for the Study of Infant Deaths, which was set up in 1971 to support bereaved parents and fund research. Following a television programme in 1985 in which he disagreed strongly with a pathologist who believed cot death was due to accidental smothering, he was contacted by a lady-in-waiting of the Princess of Wales, who asked how the Princess could help the bereaved parents. She came to Peterhouse in the midst of a snowstorm to meet a group of parents. Her visit was tremendous, he said. 'No other gesture could have helped more.'

Professor Davis became temporarily notorious when he jumped down from the Kings Cross train after it was stopped by signals outside his house. He was

prosecuted for trespassing on the line, only because he had returned to hand his ticket to the train guard. He also campaigned for the reduction of the speed limit over the railway bridge, and was a prime mover in the building of the genome cycle path and in getting the Children's Hospital promised.

He was well known for his driving, for his dog Sam, a border collie with an impeccable road sense and perfect behaviour, and as a regular customer of the Country Market, especially for baked goods. He was rewarded with a cake on his one hundredth birthday.

Professor Davis died in May 2025, only three months before his 102nd birthday. He is survived by his second wife, Ann Louise Kinmonth, also a foundation professor at Cambridge, and by his sister Sylvia, five children, five grandchildren and one great grandchild.

Bridget Hodge

RAINBOWS, BROWNIES AND GUIDES

Shelford and Stapleford Rainbows have been looking at fire safety this term as part of the Rainbows Have Adventures theme in the Girlguiding programme. They've practised their fire drill and discussed how to make it safe. They learned about safety near fires and put this into practice gathering wood and lighting a fire to cook s'mores on.

Shelford Brownies completed a challenge badge about the Azores this term and finished off their Express Myself Theme award. They've enjoyed making structures out of food, creating artworks with tape on canvas, designing inventions to solve problems (like parents!), and making and decorating ceramic owls. A highlight was one of the Brownies achieving her Brownies Gold Award - the highest award a Brownie can achieve. Term will finish with a campfire, with s'mores of course.

Shelford Guides have been doing lots of outdoor activities this term including an escape room style team challenge, cooking on fires and practising pitching tents ahead of a camping trip in September. A group of us also took part in Forward 2025 – a 12-mile challenge hike with other local Guides and Scouts.

We're always glad to hear from adults who would like to help with any of our unit meetings (Rainbows 4–7 year olds, Brownies 7–10 year olds and Guides 10–14 year olds). Find out more at bit.ly/volGuiding and get in touch at shelforddistrict@gmail.com.

Lisa MacGregor

GATWARD & SONS

BUILDING ON EXPERIENCE
CARPENTRY, JOINERY & BUILDING CONTRACTORS

Ashley

☎ 07525 494 478

Chris

☎ 07557 735 247

✉ contact@gatwardandsons.co.uk

EXTENSIONS CONVERSIONS RENOVATIONS ALTERATIONS

Neaves Electrical Ltd

All aspects of electrical work undertaken.

www.neaveselectrical.co.uk

Email:

paul@neaveselectrical.co.uk

Mobile: 07702 280 687



Thomas J Shearing

Furniture Restoration and Traditional Upholstery

Comprehensive re-upholstery service

Vast range of furnishing fabrics

Antique and modern furniture restored

Picture Framers and Restorers

French polishing and other finishes available

Bespoke mirrors made to order

Serving Great Shelford and Cambridgeshire

Tel: 07801 357148 Email: shearing@mail.com



Get out and about and save money with
PANTHER TAXIS

Did you know that we now offer a REDUCED RATE village to village service to or from YOUR VILLAGE?



Only pay
door to door
not a penny
more

Find out how much you can SAVE by downloading our app



With a fleet of over 600 vehicles running 24/7, you know who to call!

01223 715715

www.panthertaxi.co.uk

Prices are fixed based on the Cambridgeshire metered rates to or from the included villages. Villages outside of this area may still have a callout fee.

CHIMNEY SWEEP

J. L. WIGHT

Guild of Master Chimney Sweeps



Fully Insured

Advice given / problems solved

Certificates issued

01954 253315

www.camsweep.co.uk

9 Cow Lane, Rampton

SHELFORD FUN RUN

SUNDAY 21 SEPTEMBER 2025

The fast and flat 5k on closed roads through Great and Little Shelford is great for serious runners to register a personal best as we are a UKA registered race, but is also perfect for beginners and family groups who want to jog or walk at their own pace, savouring the car-free experience and lovely atmosphere.

SUPPORT OUR LOCAL CO-HOST CHARITIES

This year, we've added a 'fundraiser discount option' and made it super easy to set up your own fundraising page for either charity with Give As You Live.

Great Shelford Playscape are raising funds towards a new active trail for the rec and upgrading the basketball hoop to a fun 3x3 basketball court, the exciting new Olympic sport. See www.ShelfordPlayscape.org for more details.

CamRARE need funds to support more local families by offering friendship, connection and inclusive, adaptive activities that keep minds and bodies healthy. Think dance sessions, hydrotherapy swimming, farm visits, inclusive tennis, adaptive water sports, and more.

Great Shelford Parish Council will also be holding their Fun Day with us on the rec, think inflatables, yummy food trucks and probably a duck race!



PUT THE DATE IN YOUR DIARY AND SEE YOU THERE!

Eleanor McCrone

Great Shelford Mobile Warden Scheme (Registered Charity 1055515)

We are a local charity that helps support the older residents of Great Shelford village to remain living independently in their own home. Through our phone calls and visits we aim to reduce social isolation and loneliness.

We can provide:

- Reassurance and security through daily phone calls and regular visits.
- Additional visits in the event of illness.
- Assistance with doctors' appointments and accessing local information.
- Help with paperwork and prescriptions, visiting the bank/post office, changing a light bulb and picking up shopping in the village.



For further information visit our website <http://www.shelfordwardenscheme.org>

Jenny David (Chair) 07764615524 jennykmf@yahoo.co.uk

Claire Smith (Warden) 07811676991 saurus1960@gmail.com

DUXFORD BUILDING & LANDSCAPE SERVICES

All work considered from:

- Hard Landscaping
- Brickwork
- Structural Alterations
- Carpentry
- All types of Building Works from Extensions to Conversions



D A Rayment

Home: 01223 837645

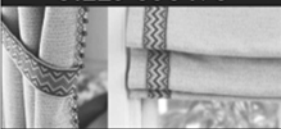
Mobile: 07958 774360

Email: duxfordbuilding@btinternet.com

Web: www.duxfordbuildingandlandscapes.com

*Bespoke
Curtains
& Blinds*

01223 836498



suecrowcurtains.com



*Award winning free house & restaurant
in the heart of the village.*

01223 503 402

@ hello@threehorseshoes-pub.com

www.threehorseshoes-pub.com

NB HORTICULTURE & CAMBRIDGE HEDGES

All types of garden work
& landscaping

Hedge & Shrub Supplier

www.cambridgehedges.co.uk

Mr N Barber BSc RHS Cert

Consultant Member of the Gardeners Guild

109 Cambridge Road
Great Shelford, CB22 5JJ

07789 564042

01223 977306

FOOTBALL CLUB

THE GREAT SHELFORD FC MEMORIAL SHIELD

WEEKS COMMENCING 4TH & 11TH AUGUST - ALL FIXTURES 18:15 KO
GREAT SHELFORD RECREATION GOUND

GROUP A

Monday 4th August

Shelford 'A' vs Soham 23s

Thursday 7th August

Soham U23s vs Comberton
United

Monday 11th August

Shelford 'A' vs Comberton
United

GROUP B

Wednesday 6th August

Shelford 'B' vs Hemingfords
United

Friday 8th August

Orwell vs Hemingfords
United

Wednesday 13th August

Shelford 'B' vs Orwell

Final - Friday 15th August

Winner of Group A vs Winner of Group B

ALL PROCEEDS GOING TO THE ARTHUR RANK HOSPICE



TRADITIONAL RESTORATIONS

**A FRIENDLY LOCAL SERVICE
FOR ALL TYPES OF ANTIQUE &
MODERN FURNITURE**

A complete restoration service:

- All types of furniture repairs
- Traditional French polishing
- Hard-wearing, high-quality lacquer finishes
- A comprehensive re-upholstery service

Over 20 years working in the local area
Free estimates & advice given on all work



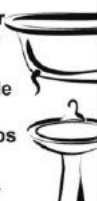
JONATHAN PORTER

**5 BABRAHAM ROAD, SAWSTON, CAMBRIDGE CB22 3DQ
TEL 01223 835515 MOB 07932 611184**

STEVE the PLUMBER

Steve the Plumber
is a local plumber
with a friendly,
helpful and reliable
service.
Small or larger jobs
undertaken.
Competitive rates.

Please call 07803922517
or email
steve_the_plumber@me.com



- ★ Dance classes from 3 years
- ★ Fully qualified and experienced teachers
- ★ Dance exams and performing opportunities available

- | | |
|------------------|---------------------|
| ★ Ballet | ★ Contemporary |
| ★ Tap | ★ Street Dance |
| ★ Modern Theatre | ★ Musical Theatre |
| ★ Jazz | ★ Body Conditioning |

Our mission is to inspire a love of the performing arts
through high quality dance instruction in a disciplined,
inclusive and nurturing environment, whilst encouraging
a strong work ethic, confidence and creativity.

Trial classes available

Email: dancededicationawston@gmail.com
Web: www.dancededicationuk.com



AMS (EA) Ltd

Driveways, Landscaping & Plant Hire

Our areas of expertise include:

- All Driveways & Block Paving • Driveways Cleaning & Sealing**
• Patios & Paths • Fencing • Drainage • Turfing & Seeding
• Artificial Grass • Site & Garden Clearance (Licenced)
• Grab Hire & Plant Hire • All Aggregates Delivered

All paving work comes with a 5yr min Guarantee

Call for **FREE** estimates and bookings:

Please visit our websites for examples of our work & refs:

Office: 01638 721883 or Site: 07759 261266

Newmarket, Cambridge and Ely

amedriveways.co.uk

BRADSTONE Asitred

BrettApproved

AGGREGATES

amiaggregates.co.uk

www.amsealtd.com

ANGLIA TREE CARE

A O'Connor

Tel: 01223 424454

**23 King Street
Cambridge CB1 1LH**

www.angliatreecare.co.uk Email: info@angliatreecare.co.uk

*Tree surgery
Stump grinding
Hedge maintenance
Fully qualified & insured
All work carried out to British
Standard BS3998
Member of the Guild of
Master Craftsmen*



TENNIS CLUB

The recent hot spell meant we were able to complete all three weekends of GSTC doubles competitions. They were well attended and it was great to see some new members taking part. Each contest involved two groups playing in a round-robin format, from which four pairs qualified for the knockout semi finals. Ladies' weekend saw nine pairs (pictured) take part in a competition that was good fun, played in a great atmosphere with good tennis despite windy conditions. Congratulations to group winners Mel Boyle and Helen Tipping along with Keri Tobin and Monika Jacquinot. Runners-up were Pippa McLoughlin and Caroline Clulow, Anna Disley-Stevens and Kirsteen Gordon.



We had an amazing turnout for the men's doubles tournament with 16 pairs taking part (pictured). There was a really high standard of tennis played in challenging conditions of heat with a bit of breeze, then rain, then heat again but we managed to complete the matches by 6pm. The pace was fast and the atmosphere competitive but nicely relaxed. The following pairs went through to the semi-finals: Jamie Blundell and Martin Miller, David Hu and Inigo Martin Corena, Manne Guron and Ian Styan, James Diver and Cliff Humphreys.



Finally, the mixed doubles saw 13 pairs play on hot windy courts, a bit like playing inside a hair dryer. Semi-finalists are Helen Tipping and Stephen Chittenden, Dan Fitzsimmons and

Claire Taylor, Mel Boyle and Pierre Rodriguez, Sarah Richards and Gary Stiefel.

Monika Jacquinot, Tournaments Organiser GSTC

CRICKET CLUB

The vagaries of the fixture list mean that there have only been two matches since the last report. Both were won so we remain healthily placed in the league table. Against Royston we made a promising start but then a series of wickets reduced us to 106 for 6 after 25 overs and in danger of not using the full 40 overs. However, Mark Milne joined Jonathan Ede and their unbroken partnership of 151 took us to a healthy 257 for 6. Mark made 50 and Jonathan reached his century in the grand manner with a 6 in the final over. Royston started their innings well and for a long time were ahead of the required run rate, but eventually the wickets started to tumble (Jeff Wilson taking 3 and Nusrat Hamid and Mark Milne 2 each) and they were all out for 199, giving us a comfortable victory.

Two weeks later Harlton were the visitors and we had the misfortune of having to field first in heatwave conditions. However, the bowlers stuck to their task in the face of some strong batting and the run rate never got out of control. Nevertheless, 232 for 8 was a challenging score. After two early wickets Jeff Wilson and Shaaon Bhattacharya steadied the ship. They kept the scoreboard ticking over, if a bit behind the target rate, but Shaaon unfortunately had to retire on 34 with heat exhaustion. However, Nicholas Schramm took up the reins with a brisk 40, and Jeff stayed through to the end on 85 not out. The final margin of 5 wickets with 5 overs to spare sounds comfortable, but for most of the game it was anything but that and counts as one of our most satisfying victories of recent years.

The junior season is almost over and will be reported in the next issue. But my contender for Champagne Moment came while umpiring the Under 13s when we beat Longstanton by one wicket and the Longstanton coach/umpire could hardly bring himself to signal the wide by his premier bowler which ended the match in our favour. The Under 13s have not had a very successful season, but beating a team who were so desperate to win was very satisfying.

The senior team has only one more home match – Saturday 23 August at 1pm. All support appreciated!

Peter Ede, Chair

WHAT'S ON IN AUGUST

| CAMBRIDGE ADC THEATRE | |
|---|--------------|
| 29 July –2 Aug | Star Quality |
| https://www.adctheatre.com/ | |

| CAMBRIDGE ARTS THEATRE <i>Five pop-up adventures for children</i> | |
|---|--|
| 4 & 5 | <i>Splat!</i> For ages 3-6 (At the Atrium Theatre, Chesterton Community College) |
| 7–9 | <i>How a jellyfish saved the world</i> For ages 4–11 (At the Atrium Theatre, Chesterton Community College) |
| 13 | <i>The Imagination Train</i> For ages 0–3 (At Arbury Community Centre) |
| 14 | <i>Miniature Travelling Circus</i> For ages 4–6 (At Arbury Community Centre) |
| 15 | <i>Puppets in Peril</i> For ages 7–9 (At Arbury Community Centre) |
| https://www.cambridgearts theatre.com/whats-on/splat-pop-adventures | |

| CAMBRIDGE PAST PRESENT AND FUTURE - WANDLEBURY | |
|---|---|
| 4, 11,18 | Holiday Bushcraft for 5–12 year olds |
| 5 | Meet the cows – guided walk |
| 15 | Calm under the Canopy: Mindful Meditation |
| 27 | Evening walk with a warden |
| https://cambridgeppf.org/events-list/ | |

| SAFFRON HALL | |
|---|---|
| 3 | National Youth Orchestra of Scotland |
| 8 | China National Centre for the Performing Arts Orchestra |
| 17 | National Youth Choir (15-18 years) Night Vigil |
| 23 | National Youth Choir (9-15 years) Songs of Land and Sky |
| https://www.saffronhall.com/visit-us/booking-info | |

GREAT SHELFORD VILLAGE NEWS

CONTACTS AND CONTRIBUTIONS

GSVN was designed from the outset to be a publication for news and information about our village, our societies, our businesses and our events. We are pleased to receive articles, letters and notices for community events for consideration. We don't invite poems or fiction because that would change the nature of the magazine.

For guidance, please note that an article of around 400 words, without a photo, will fill a full page. Notices for events work best as a half page (half A5) in landscape format and usually in black and white.

Please send your contribution, preferably as a Word document, by email (see below). You may also send items by post to Judith Wilson, 11 Elms Avenue, Great Shelford CB22 5LN. Please include your contact details. The copy date is usually the second Friday of the month.

General enquiries and items for publication

gsvneditorial@gmail.com
01223 842553

Commercial advertisements

gsvnadverts@gmail.com

These are for a 12-month period, renewed in January.
There is a waiting list

Subscriptions and online payment details

gsvnsubs@gmail.com
01223 842993

NOTE

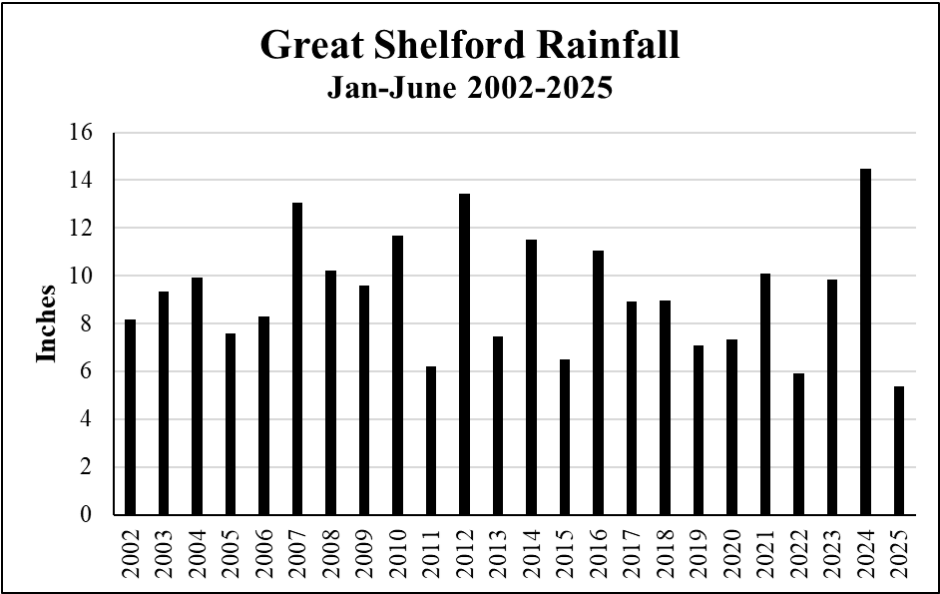
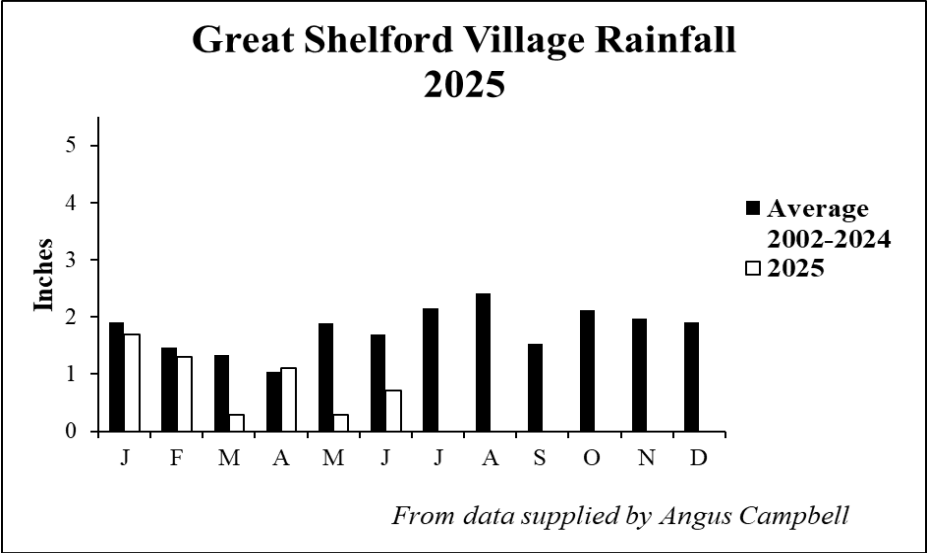
The *Great Shelford Village News* is published by the Editorial Committee, whose members are delighted to receive the many regular and occasional contributions that make it all possible. The Committee accepts such contributions in good faith, but cannot take responsibility for the accuracy of information contained therein. The views expressed are those of the contributors and do not necessarily reflect those of the Editorial Committee.

The Committee, of necessity, reserves the right to amend or reject items, for a variety of reasons. In these cases (unless the changes are minor), every reasonable effort will be made to contact the contributor to obtain agreement.

Editorial Committee:

Duncan Grey, Bridget Hodge, Marjorie Smith, Judith Wilson

Archive copies of previous issues can be found at <https://shelford.org/news.htm>



This second chart shows that we have had the lowest rainfall in the first six months of this year since our records began.

LOCAL ORGANISATIONS

| | | | |
|---|--|--|----------------------|
| 2G3S Green Group | Peter Woods | mail2G3S@gmail.com | 843438 |
| Badminton (Little Shelford) | James Newman | james@jamesnewman.org | 07717 394176 |
| BCSS Cactus Society | Jacqui Arbon | | 07867653748 |
| Bowls Club | Gill Taylor | gill.mtaylor@gmail.com | 845904 |
| Brownies, Guides, Rainbows | Lisa MacGregor | shelforddistrict@gmail.com | 843021 |
| Carpet Bowls | Wendy Seekings | m.seekings039@btinternet.com | 843416 |
| Citizens Advice Bureau | Cambridge | | 0808 278 7808 |
| Country Market | Dorothy Doel | dorothy@woodlandsroad.plus.com | 843946 |
| Cricket Club | Peter Ede | peter.ede@ntlworld.com | 01223 510662 |
| Feast – Bunch | Duncan Grey | dsg@post.com | 07935 368536 |
| Football Club | Terry Rider | footybeast63@sky.com | 01354 680661 |
| Free Church | The Administrator | administrator@shelfordfreechurch.org.uk | 842181 |
| Friendship Club | Rosey Feuell | roseyleaf@talktalk.net | 01223 213305 |
| Friends of Shelford Library | Daphne Sulston | dsulston@googlemail.com | 842248 |
| Granta Medical Practices | | cpicb.contact.gmp@nhs.net | 0300 234 5555 |
| Great Shelford Online | David Martin | www.greatshelfordonline davidm1961@gmail.com | 07772197770 |
| Memorial Hall Bookings | Jenny Eldridge | office@greatshelfordparishcouncil.gov.uk | 01223 616622 Ext 302 |
| Mobile Warden Scheme | Jane Coppola (Warden) | jetcoppola@gmail.com | 07969 498617 |
| | Jenny David (Chair) | jennykmf@yahoo.co.uk | 845367 |
| Parish Church Bell-ringers | Ann Seaman | juliet.a.seaman@outlook.com | 504682 |
| Parish Church Community Room | Mary Lester | lestermh_uk@yahoo.co.uk | 842411 |
| Parish Church Friends | Bob Doel | bobdoel@woodlandsroad.plus.com | 843946 |
| Parish Church Sunday Club | Gillian Pett | gillian.pett29@gmail.com | 843278 |
| Parish Churchwardens | Simon White | churchwarden@stmarygreatshelford.org | 07984 451305 |
| | Helen Clarke-Hill | churchwarden@stmarygreatshelford.org | 07761 483203 |
| Police | Non-emergency number | | 101 |
| Rainbow Pre-School | Allison Tomlin | | 07985 216603 |
| Royal British Legion | Kevin Swann | sawstonpampisford.secretary@rbl.community | 07496517859 |
| Rugby Club | Secretary | secretary@shelfordrugby.co.uk | 843357 |
| Sawston Sports Centre | Sawston Village College | info@sawstonsports.com | 712555 |
| Beavers, Cubs and Scouts | | contact@sandsscouts.org.uk | |
| Shelford & Stapleford Strikers | Douglas White | douglas.white2@ntlworld.com | 561753 |
| Shelford Bridge Club | Tony Cliff | anthony.r.cliff@gmail.com | 07532 737794 |
| Shelford Primary School | Chris Grey (Headteacher) | office@shelford.cambs.sch.uk | 843107 |
| Shelford Spokes Cycling Club | Brian Connellan | shelfordspokes@gmail.com | 07941 574663 |
| Shelford Support Group (transport to hospital, etc.) | General enquiries: | shelfordsupport@googlemail.com | 07804 041173 |
| | To book a journey: | | 07514 542282 |
| Stapleford Choral Society | Adam Pounds | adampounds54@btinternet.com | 07804 308042 |
| Tennis Club | Sarah Richards | secretary@gstc.org.uk | |
| The Arts Society South Cambs | Clem Messenger | gc_messenger@yahoo.co.uk | |
| Twinning Association | Penny Pearl | penny.pearl@btinternet.com | 842483 |
| U3A (Sawston Branch) | John Gray | johngry6@gmail.com | 01223 841784 |
| Village Charity | Samantha Rigby-Coghlan (Clerk to the Trustees) | clerk@gsvc.org.uk | 07979 184273 |
| WI | Vanda Butler (Secretary) | vanda.butler@googlemail.com | 561053 |
| Youth Initiative | Zac Britton | zac.britton@ssyi.club | 07599 024210 |



STAPLEFORD
GRANARY
MUSIC • ART • CULTURE

Welcome to the

ORCHARD



Enjoy the wildlife and habitat of our lovely historic orchard this summer, open to all our visitors. Take a seat under the trees, and enjoy hot and cold drinks, cakes and ice cream from our beautifully restored coffee horsebox.

**Open on dry days every day except
Wednesdays from 10:00am - 3:00pm**

£1 off any drink from the horsebox
until end August: collect a voucher
from the cafe.

DISCOVER MORE AT STAPLEFORD GRANARY

- EXHIBITIONS & INSTALLATIONS
- ARTIST TALKS
- CLASSICAL, FOLK & JAZZ LIVE MUSIC
- AWARD-WINNING CAFE
- PRE-CONCERT DINING
- CHILDREN'S CRAFTY DAYS
- POETRY & THEATRE
- HIRES, CONFERENCING & HOSPITALITY

www.staplefordgranary.org.uk
Bury Road, Stapleford, Cambridge, CB22 5BP