

# Great Shelford VILLAGE NEWS

EST 1999

February 2025

PRICE: 40p

## *Little Shelford Pantomime Review*



Photo: Louise Guron

## *Busway Meeting*

## *A Shelford Reminiscence*

CONTENTS			
Parish Council Minutes	1	Organic Gardening	32
Parish Council Meetings	2	Little Shelford History Society	32
Parish Council News	4	Country Market	34
Parish Church	6	Playscape	34
Free Church	10	Repair Café	35
Pantomime Review	11	Neighbourhood Plan	36
School	16	2G3S	38
Concrete Rose	18	Old News	40
Library	20	WI	41
Obituary: David Adams	21	Pippa Heylings	42
Granta Medical	22	Football Club	44
Diary	24	Tennis Club	44
Feast	25	What's On	46
A Personal Reminiscence	26	March issue of the <i>Village News</i>	46
CSET Busway	31	Rainfall	48
Roadworks	31	Local Organisations	
Flower Club	32	Stapleford Granary	Back cover

GREAT SHELFORD PARISH COUNCIL			
<b>CHAIR</b> Malcolm Watson		<b>DEPUTY CHAIRS</b> Gregory Price, John Stanton	
<b>CHAIRS OF SUB-COMMITTEES</b>			
<b>Planning</b> Gregory Price		<b>Highways</b> Timothy Mann	
<b>Building &amp; Grounds</b> Malcolm Watson		<b>Cemetery &amp; Allotments</b> Angela Niblett	
<b>MEMBERS</b>			
Paula Arnold	Peter Brown	Roberto Gherseni	Howard Kettel
Barrie Ashurst	Justin Curtis	Barbara Kettel	Angela Mutty
<b>CLERK</b>	Nicola Webster <i>clerk@greatshelfordparishcouncil.gov.uk</i> 01223616622		
<b>To email Parish Councillors, use:</b> <i>firstname.surname@greatshelfordparishcouncil.gov.uk</i>			
<b>DISTRICT COUNCILLORS</b>	Peter Fane	07802 256861	William Jackson-Wood 07873 731597
<b>COUNTY COUNCILLORS</b>	Brian Milnes	07971 886113	Maria King 07764 609061

## **GREAT SHELFORD PARISH COUNCIL**

*greatshelfordparishcouncil.gov.uk*

### **SUMMARY FROM THE UNADOPTED MINUTES OF THE FINANCE AND GENERAL PURPOSES MEETING ON 18 DECEMBER 2024**

#### **PUBLIC PARTICIPATION SESSION**

No members of the public were present.

#### **COUNCIL ADMINISTRATION MATTERS**

**a)** Neighbourhood Plan update: It was noted that the Regulation 16 consultation had commenced and that the appointment of the independent examiner should be added to the January full Council agenda.

**b)** Water boiler in the Memorial Hall: The Council will cancel the current contract with an exit fee of £75.84, and buy a buffalo water boiler at a cost of £390 + £200 for installation.

**c)** Cricket: The licence fee for cricket for 2025 will be £975.

**d)** East-West Rail: Following amendment by Cllr. Stanton, the draft document will be published on the website and Facebook to enable comments from the public before final approval at the January full Council meeting.

**e)** Cambridge South-East Transport (CSET): Action regarding the allocation of funds towards legal costs for CSET was considered. This was referred to full Council in January, with the recommendation for a £5,000 contribution and that the Parish Council should not be the instructing body.

**f)** Local Highways Improvement (LHI) funding: Cllr. Mann provided an update on the 2024/25 LHI bid for the improvements to Church Street. It was agreed that the 2025/26 LHI bid will be for a pedestrian refuge near Scotsdales with an £8,500 contribution from the Council, which is expected to be 50% of the cost.

**g)** Insurance Valuation Report: received and noted.

**h)** Pavilion Dilapidation Survey: The Clerk will seek additional information regarding the sliding doors, review the red items and instruct contractors for the smaller matters.

#### **COMMUNITY MATTERS**

**a)** Community awards for 2025: Requests for nominations will be launched as soon as possible with a closing date at the end of February half term. The Clerk will approach Redmayne, Arnold and Harris again regarding sponsorship.

**b)** Christmas food parcels: The Great Shelford Village Charity (GSVC) have requested a donation to their Christmas food parcels. The Council is happy to help in principle but would like more details. A meeting will be arranged with GSVC to establish what support they require.

**c)** 2025 Fireworks Event: This will be on 8 November.

**d)** Portaloo on the recreation ground: this will remain *in situ* until the Memorial Hall is refurbished.

## FINANCE MATTERS

**a)** The monthly accounts were reviewed.

**b)** The current finances were reviewed.

**c)** Current Earmarked Reserves: minor changes to the recommendations in addition to the proposed transfers were agreed and a detailed report will be presented to the January Council meeting.

**d)** Draft budget: recommendations will be made to Full Council in preparation for the Precept Request, with a proposed precept of £390,519 – an increase of 7.7%.

Full copies of the agendas and minutes of the Parish Council and Committee meetings can be viewed on the Parish Council website:

*greatshelfordparishcouncil.gov.uk/minutes-agendas*

### PARISH COUNCIL & COMMITTEE MEETINGS IN FEBRUARY

Building & Grounds	5 February	7.30pm	Pavilion
Planning Committee	10 February	7.30pm	Memorial Hall
Full Council Meeting	19 February	7.00pm	Pavilion
Planning Committee	24 February	7.30pm	Memorial Hall

Meetings may be adjourned for up to 15 minutes when the public can ask questions and put forward points of view related to business on the agenda or for items they wish to raise for future agendas. No decisions can be made in this section of the meeting.

# JO ALEXANDER

Meticulously designed and ethically sourced  
furniture for your garden

Visit us at Childerley Estates  
[www.joalexander.co.uk](http://www.joalexander.co.uk)



**David Levy**  
MSSCh MBChA

**Chiropody  
and  
Podiatry**

**Home Visiting  
Service**

Mobile: 07966 136972  
Home: 01223 834634  
01223 459239

## DAVID FOX CARPENTRY

*Purpose-made  
joinery and fitted  
furniture*

Unit 4 Granta Terrace  
Stapleford  
Cambridge

**01223 845143**

## sawstoncarpet andflooringltd

Carpets - Sisal - Vinyl  
Wood - Laminate  
Karndean - Amtico - Moduleo

**Mon-Fri: 9am-5pm  
Sat: 9am-4pm**

Unit 34, Eastern Counties Leather Site,  
London Road, Pampisford CB22 3EE  
Tel 01223 837005

[sawstoncarpetsandflooring@gmail.com](mailto:sawstoncarpetsandflooring@gmail.com)  
[www.sawstoncarpetsandflooring.com](http://www.sawstoncarpetsandflooring.com)

## NICHOLAS CLIFFE & CO CHARTERED ACCOUNTANTS

*Business Advisers for South Cambridgeshire*

**Accounts, Audit, VAT & Tax Advice**

**WE WANT TO HELP YOUR BUSINESS GROW**

**Realistic Fees**

**We offer a free initial meeting and business 'health check'.**

Mill House, Mill Court, Great Shelford

Tel: 01223 471576

[www.nicholas-cliffe.co.uk](http://www.nicholas-cliffe.co.uk)

## PC NEWS

**2025 Community Awards:** Nominations now open!

It's time to recognise the exceptional individuals who make our community shine. These awards celebrate the people who go above and beyond, inspiring us all to be better neighbours, contributors and role models. We are thrilled to announce that nominations are now open for the following categories:

**Good Neighbour Award:** Celebrating individuals who embody kindness, generosity and support for their neighbours.

**Outstanding Contribution Award:** Honouring those whose efforts have made a significant, positive impact on our community through projects or initiatives.

**Young Person Award:** Highlighting the achievements of young individuals under 18 making an impact through leadership, or community service.

Sponsored by Redmayne, Arnold and Harris.

The winners will be announced, and prizes will be awarded at the Annual Parish Meeting on Wednesday, 26 March 2025.

Nominations are open until Friday 28 February. Visit

[www.greatshelfordparishcouncil.gov.uk](http://www.greatshelfordparishcouncil.gov.uk) or email

[clerk@greatshelfordparishcouncil.gov.uk](mailto:clerk@greatshelfordparishcouncil.gov.uk) to fill out the form and share why your nominee deserves to be celebrated.

Let's come together to celebrate the people who make our community truly special. Don't miss this opportunity to shine a light on those who inspire us.

### **Parish Council Budget and Precept for 2025/26**

The Parish Council has approved the budget and precept for the upcoming financial year. The precept has been set at £390,519, representing an increase of £28,013 or 7.7% from the previous year.

This funding will be directed toward maintaining and improving essential services, community projects and initiatives that benefit all residents. The Parish Council remains committed to transparency and ensuring that the precept supports the long term sustainability of our community.

*Malcolm Watson, Chairman*

**CHIMNEY SWEEP**



07919 888990  
 Local, professional & insured  
 Certificates issued  
 Advice given  
 Problems solved  
 edcleansweep@gmail.com  
 www.edcleansweep.co.uk  
 Bird guards fitted  
 Chimney repairs



**Shelford Massage**

After over 30 years as a Physiotherapist  
 (Shelford Physio)

I have decided to move into massage  
 therapy

I can offer a relaxing or stronger massage  
 depending on what you require

Please call Stephanie Hatter 07789635181  
 email shelfordmassage@gmail.com



**SAM  
 MCGUINNESS**

**CURTAIN MAKING  
 ROMAN BLINDS  
 SOFA COVERS**

Call or email  
 for a free quotation  
 07803 737518  
 samcampbell39@hotmail.com

**Great Shelford Local Store**

A great deal more from your local store!

General Groceries • Fresh Produce • Confectionery  
 Instore Bakery • Off Licence • Photocopying  
 Newspapers • Magazines • Stationery • Dry Cleaning  
 Helium Balloons • Party Goods • Passport Photos

Full Post Office counter facilities  
 33-35 Hinton Way, Great Shelford  
 Tel: 01223 843307

Shop Opening Mon-Sat 07:00 - 20:00 Sunday & Bank Holiday: 08:00 -18:00		Post Office Opening Mon-Sat 07:00 - 20:00 Sunday 09:00 - 18:00
--	--	--

**TAYABALI & WHITE**  
 ACCOUNTANCY | TAX | CONSULTING

5 High Green, Great Shelford, Cambridge CB22 5EG

Telephone: **01223 843324**  
 Email: **enquiries@tayabali-white.co.uk**

**Daniel Anderson  
 Friendly Gardening &  
 Fence Panelling  
 Service**

~~~~~

No job too big  
 No job too small  
 Affordable rates  
 07852 971 696  
 andersongardening@  
 outlook.com



## GREAT SHELFORD PARISH CHURCH

### Saint Mary the Virgin

#### Julie's Jottings

At St Mary's Church, Great Shelford, over the next few months we are undertaking a number of projects. There will be some work to unblock soakaways and repair some downpipes and a leaky roof, as well as to complete an unfinished restoration of the organ. In addition, we are also looking to put in cupboards to tidy up the back of the Church. These are jobs that we have been working towards for some time, and suddenly they are becoming feasible. Each project on a Grade 1 listed building like St Mary's Church has to be considered by an architect and advisors from the Diocese, as well as advisors from various groups who may have an interest and some projects have to be approved by the Chancellor of the Diocese. It takes endless forms and time; nothing happens quickly.

The Church Wardens and Parochial Church Council (PCC) have a strong sense of responsibility for this beautiful ancient building which has for so long served this community. The villagers have come to St Mary the Virgin Church for their weddings, baptisms and funerals, for centuries. They have been uplifted, consoled and nurtured.

In the middle of this process, I went to a Committee Meeting for The Friends of Great Shelford Parish Church. Members of this group may or may not come to worship services, but they all have an interest in the ancient Church building. It costs just £5 a year to join the Friends and to support the preservation of this beautiful building for the future. After all, this Church is a part of our heritage. We see this illustrated in the Visitor Book when couples come back to visit the Church on their wedding anniversaries.

In addition to our building work, we are also starting a new venture to offer people an opportunity to meditate and pray together in a group. We will be using well-honed tools from the Christian tradition which will also resonate with those who practice other meditation and mindfulness traditions. We really want to do this in the Church space, but in February the Church is too cold in the evening, so we are meeting on 26 February at 7pm at the vicarage (12 Church Street).  
*Rev Julie Norris*

See our website <https://www.stmarysgreatshelford.org/> for up to date information about our services and activities.

**The Church is open daily for prayer 9.30am to 4 pm.**



|                                                      |                                                                                                                                                                                                                                                                                                                                                                                                                                                                                                                           |
|------------------------------------------------------|---------------------------------------------------------------------------------------------------------------------------------------------------------------------------------------------------------------------------------------------------------------------------------------------------------------------------------------------------------------------------------------------------------------------------------------------------------------------------------------------------------------------------|
| <b>Saturday 1 February</b>                           |                                                                                                                                                                                                                                                                                                                                                                                                                                                                                                                           |
|                                                      | <b>10.30am: Maureen's Coffee Morning</b><br>In the Community Room -- until 12noon, all welcome.                                                                                                                                                                                                                                                                                                                                                                                                                           |
| <b>Sunday 2 February Candlemas</b>                   |                                                                                                                                                                                                                                                                                                                                                                                                                                                                                                                           |
|                                                      | <b>8am:</b> Traditional <b>Holy Communion Service</b> using the Book of Common Prayer.<br><b>10am:</b> Contemporary <b>Parish Communion Service and Baptism of Henry Griffiths.</b> We remember how Jesus was taken by his parents to the temple and we bless and light candles to remember how he is the light for the world and we also give a candle to Henry to remember his baptism.                                                                                                                                 |
| <b>Monday 3–24 February</b>                          |                                                                                                                                                                                                                                                                                                                                                                                                                                                                                                                           |
|                                                      | <b>2pm: Pilgrim Group</b> This month we are using a study guide called Connect! a series which explores Christian faith and issues of our time. We will consider these both from a local and global perspective. The topics we will consider are:<br><b>3</b> February Waste,<br><b>10</b> February Food,<br><b>17</b> February Neighbours,<br><b>24</b> February Nature.<br>We are meeting at the home of David and Norma Coggins.<br>If you would like to join us, you will be welcome.<br>Please contact Julie Norris. |
| <b>Sunday 9 February, Fourth Sunday before Lent</b>  |                                                                                                                                                                                                                                                                                                                                                                                                                                                                                                                           |
|                                                      | <b>8am:</b> Traditional <b>Holy Communion Service</b> using the Book of Common Prayer.<br><b>10am: Parish and Family Communion Service.</b> This is an all-generations service: the children take part in it along with their families and friends. The theme will be 'What is a disciple?' We reflect on Jesus' calling the first disciples to follow him.                                                                                                                                                               |
| <b>Sunday 16 February, Third Sunday before Lent</b>  |                                                                                                                                                                                                                                                                                                                                                                                                                                                                                                                           |
|                                                      | <b>8am:</b> Traditional <b>Holy Communion Service</b> using the Book of Common Prayer.<br><b>10am:</b> Contemporary sung <b>Parish Communion Service.</b>                                                                                                                                                                                                                                                                                                                                                                 |
| <b>Thursday 20 February</b>                          |                                                                                                                                                                                                                                                                                                                                                                                                                                                                                                                           |
|                                                      | <b>10.30am:</b> A group from St Mary's will go to the Cambridgeshire Care Home to lead a Communion Service.                                                                                                                                                                                                                                                                                                                                                                                                               |
| <b>Sunday 23 February, Second Sunday before Lent</b> |                                                                                                                                                                                                                                                                                                                                                                                                                                                                                                                           |
|                                                      | <b>8am:</b> Traditional <b>Holy Communion Service</b> using the Book of Common Prayer.<br><b>10am:</b> Contemporary sung <b>Parish Communion Service.</b>                                                                                                                                                                                                                                                                                                                                                                 |

|                                           |                                                                                                                                                                                                                                                                                                                                                                                                                                                                                                   |
|-------------------------------------------|---------------------------------------------------------------------------------------------------------------------------------------------------------------------------------------------------------------------------------------------------------------------------------------------------------------------------------------------------------------------------------------------------------------------------------------------------------------------------------------------------|
|                                           | <p><b>3pm: Open Space</b><br/>An opportunity for children and families to have fun outside, this month in the Free Church gardens behind Cara Café.</p>                                                                                                                                                                                                                                                                                                                                           |
| <b>Wednesday 26 February ‘Quiet Time’</b> |                                                                                                                                                                                                                                                                                                                                                                                                                                                                                                   |
|                                           | <p><b>7pm at the Vicarage:</b> We are introducing a time of quiet reflection and meditation using tools offered by Julian of Norwich, Centering Prayer, Ignatius of Loyola and others. This is a space to draw breath, to pray for the church, your life, the world. People who practise meditative prayer with others often tell me that, ‘this is the best bit of my week’. You do not need to have done this before, or you may have experience to share with others. You will be welcome.</p> |
| <b>Thursday 27 February</b>               |                                                                                                                                                                                                                                                                                                                                                                                                                                                                                                   |
|                                           | <p><b>7pm Fundraising Talk:</b> This month, Rowan Staines has agreed to give the talk on ‘My journey with God’. Donations are invited at this event to support the Church.</p>                                                                                                                                                                                                                                                                                                                    |

Other regular weekly services:

**Mondays and Thursdays 8.30am: Morning Prayer** at St Mary’s (30 minutes). This is a half hour service of prayer for the church, the village and the world. You are welcome to join us.

**Sundays 6.30pm: Online Service** held via Zoom. You can find the Zoom link on the weekly Pew Sheet.

**Thought for the month:** Experience is the father of wisdom.

*16<sup>th</sup> century, proverbial*

**For more information about St Mary’s, Great Shelford**

Vicar: Revd Dr Julie Norris [Revjulienorris@gmail.com](mailto:Revjulienorris@gmail.com)

Parish Administrator: David Wilding [wildingdavid1@gmail.com](mailto:wildingdavid1@gmail.com)

St. Mary’s Great Shelford is a Registered Charity No 245456

**Great Shelford Mobile Warden Scheme**  
(Registered Charity 1055515)

We are a local charity that helps support the older residents of Great Shelford village to remain living independently in their own home. Through our phone calls and visits we aim to reduce social isolation and loneliness.

We can provide:

- Reassurance and security through daily phone calls and regular visits.
- Additional visits in the event of illness.
- Assistance with doctors' appointments and accessing local information.
- Help with paperwork and prescriptions, visiting the bank/post office, changing a light bulb and picking up shopping in the village.



For further information visit our website <http://www.shelfordwardenscheme.org>

Jenny David (Chair) 07764615524 [jennykmf@yahoo.co.uk](mailto:jennykmf@yahoo.co.uk)  
Claire Smith (Warden) 07811676991 [saurus1960@gmail.com](mailto:saurus1960@gmail.com)

**DUXFORD BUILDING & LANDSCAPE SERVICES**

All work considered from:

- Hard Landscaping
- Brickwork
- Structural Alterations
- Carpentry
- All types of Building Works from Extensions to Conversions



**D A Rayment**

Home: 01223 837645

Mobile: 07958 774360

Email: [duxfordbuilding@btinternet.com](mailto:duxfordbuilding@btinternet.com)

Web: [www.duxfordbuildingandlandscapes.com](http://www.duxfordbuildingandlandscapes.com)

*Bespoke  
Curtains  
& Blinds*

01223 836498



[suecrowcurtains.com](http://suecrowcurtains.com)



*Award winning free house & restaurant  
in the heart of the village.*

☎ 01223 503 402

@ [hello@threehorseshoes-pub.com](mailto:hello@threehorseshoes-pub.com)

🌐 [www.threehorseshoes-pub.com](http://www.threehorseshoes-pub.com)

**NB HORTICULTURE & CAMBRIDGE HEDGES**

All types of garden work  
& landscaping

Hedge & Shrub Supplier

[www.cambridgehedges.co.uk](http://www.cambridgehedges.co.uk)

Mr N Barber BSc RHS Cert

Consultant Member of the Gardeners Guild

109 Cambridge Road  
Great Shelford, CB22 5JJ

07789 564042

01223 977306



Great Shelford  
Free Church

*'He brought me into a spacious  
place because he delighted in me.'*  
*Psalm 18:19*

### **When is a door not a door.... ?**

Recently, at a conference venue, I encountered a gentleman who was unable to exit the building. He had approached the automatic doors but when they did not open, he realised there was a door release button on the left which needed to be pressed to unlock the doors. However, when he pressed this button, the doors still remained firmly closed, despite several attempts. He became increasingly flustered and frustrated with the 'un-automatic' opening doors, until another person pressed a door release button to the right of the door, causing the doors to slide open immediately and they were both able to leave the premises. The button he had been pressing was to unlock a separate and smaller door to the side, a door which, once unlocked by the door release button, needed to be pushed open manually. This poor man had been unlocking one set of doors but trying to leave by an entirely different set of doors.

As we move into the second month of 2025, I wonder how many new things you have tried, tested, or taken up, or have you simply been content to revert to your default settings?

Trying new things is a bit like opening doors to new adventures: going to new places, learning new skills, making new friends for example. For some these are welcome adventures but for others of us developing new practices appears too daunting, so we choose to go with the more familiar, comfortable option: the 'automatic'. However, when we push the doors of opportunity to try new things and learn different ways of viewing and living in the world, not only do we grow in wisdom and understanding but we can also avoid becoming overwhelmed by what is going on around us.

For me, opening the door of belief in Jesus and faith in God has been a magnificent adventure. It's a door which many people miss because they are so focussed on the immediacy of what is before them and miss the alternative door at the side. If faith is new to you, or not something you have considered before, or perhaps never quite got round to, I recommend that you take a moment to push open and explore this door that you have maybe missed: a door that leads us to a spacious place where we can dwell in safety with the one who delights in us.

Blessings.

*Diana Parr, Pastor*

## EVENTS AT GREAT SHELFORD FREE CHURCH

### SUNDAY SERVICES

**Morning Services at 10.30am:** Everyone welcome.

**Café Church on Sunday 16 February at 10.30am:** Informal service, seated around tables with refreshments served.

### WEEKDAY EVENTS

**Community Café every Monday: 10am – 12noon.** Come join us for tea/coffee and homemade cake.

**Little Steps Toddler Group every Wednesday: 10–11.30am.** This group is for toddlers up to the age of three with their carer. To book a place, please email [administrator@shelfordfreechurch.org.uk](mailto:administrator@shelfordfreechurch.org.uk)

**Tiny Toes Baby Group every Wednesday afternoon: 1.30–3pm.** This group is for babies under one year old with their parent or carer. To book a place, please email [administrator@shelfordfreechurch.org.uk](mailto:administrator@shelfordfreechurch.org.uk)

## LITTLE SHELFORD PANTOMIME

*Peter Pan* the Pantomime, or was it the rehearsal?

From the pre-recorded safety announcement right up to Eleanor Harris-Wright's final "woof" as Nana, *Peter Pan* had the audience smiling and laughing throughout.



This year's pantomime was a Little Shelford script debut for Miles Cragg, depicting a rehearsal for a production of *Peter Pan*, beset with problems – from the lost 'Lost Boys' who spend most of the production trying to make their way back to Shelford from London, to missing props, problems with the set and issues with the sound effects and music. While the usual panto puns and audience participation were present, they were given a fresh, new twist, with the audience at one point finding themselves declaring that they wanted to go home! Oh no we don't!

Directors Dick Wallin and Heidi Meikle created a production which allowed all the youngsters to shine and Frincess Richardson's brilliant artistic talent treated the audience to three beautiful backdrops.



**Tree Service Ltd**

**Professional Tree Surgeons covering  
Cambridgeshire and Hertfordshire**

**Fully Qualified & Insured**

**01763 208361 / 07743406569**

**shelfordtreeservice.co.uk**

**Rothwell's  
Carpet Cleaning**

**Carpet Cleaning &  
Stone Floor, Upholstery, Rugs**

*A few points that make us stand out:*

Rothwell's has been in business since 1993.

We're an honest local family firm.

Our large truck-mounted machines mean  
more cleaning & drying power  
for the best results possible.

Members of both the NCCA and TACCA.

We will move the furniture.

100% satisfaction or it's FREE.

*Call Oliver and Max Campbell  
for expert help today.*

**01223 832 928**

**www.Rothwells.biz**

**LAY  
ELECTRICAL  
Sales and  
Repairs**

*Washing  
Machines,  
Vacuum  
Cleaners,  
TV, Video,  
etc.*



**66 High Street  
Great Shelford  
01223 842488**

## The Great Shelford Village Charity

### Grants

We provide small grants in support of local  
people and good causes

### Almshouses

We provide affordable community housing for  
local people - families, couples and individuals -  
in housing need

### Allotments

Available to rent for a nominal annual fee

We welcome donations supporting our work; see website



[www.gsvc.org.uk](http://www.gsvc.org.uk)

[clerk@gsvc.org.uk](mailto:clerk@gsvc.org.uk)

07979 184273



facebook

The sound team did a fantastic job, from timing the amusing bell ringing which accompanied Imogen Butler Burd and May Sillence's comical entrances as the fairies Doorbell and Schoolbell, to the wonderful scene between Raleigh (Alexander Hunter) and Columbus (Tommy Haworth) as they rehearsed with a pistol – theatrical comedy at its finest!



The costumes really brought the characters to life. The seagull chorus were a spectacle to behold: resplendent in white hoodies and leg warmers and accompanied on stage by a human sized ice cream. The glitz and glamour of Trinny and Susannah (Millie Kennedy and Ella Guron) was

magnificent, their costumes enhancing the fabulously stylish characters created by the actors.

The singing this year was second to none, thanks to Lucy Barlow and Miles Cragg's musical direction and a very talented cast. When the whole cast came together to sing, the audience could not help but feel moved, particularly during the rendition of 'You Will be Found'. Maddie Young, as put-upon Assistant Director, Steph, led the cast in a fantastic performance of 'Nine to Five', dazzling the audience with her singing and dancing. The pirates' performance of 'With Cat Like Tread' was also excellent.



Harry Chatwin and Joseph Morris were splendid as this season's Panto Dames, humorous in their bickering and disagreements but showcasing the genuine beauty of their singing in the scene where Hook sat nestled between them as they fought for his affection.

Thomas Welchman's depiction of Captain Hook was impressive as he switched personality traits: one moment cruelly reprimanding his poor first mate, Smee (Dougie Carrothers); the next, crying for his mummies! Their duet, 'Good old Captain Hook', was fabulous.

Scarlett Wilkinson made a brilliantly bossy Peter Pan, commanding the stage as she chastised her poor Shadow all night! Their skilfully synchronised

duet, 'Me and My Shadow' was superbly choreographed and wonderfully executed by both. Dougie – cast both as the sad, suffering Shadow and the sycophantic yet disgruntled Smee – communicated the displeasure of both characters with inventive facial expressions. Emma Russell made a wonderful Wendy, her happy enthusiasm and innocence offset brilliantly by moments of cutting cynicism and mischief: questioning the existence of Neverland; challenging Peter as to whether he could really be happy in a place without Netflix; and offering – somewhat threateningly – to sew on Peter's shadow while brandishing an over-sized needle. Ouch!



Hannah Pulford's Tinkerbell was inspired. From the moment she dragged herself through the window into the Darling nursery in Act 1, only to be told to go back as they were going to start the scene again, Hannah conveyed the weary frustration and exasperation that brought so much humour to the role.

And there were so many more amazing performances! Emilia Munoz made



a fantastically formidable and demanding Director, deflating the other characters' efforts with a withering look. Beatrice White and Isabella Young had a wonderful onstage rapport in their roles as the Shakespearean crocodiles.

Both sets of Lost Boys brought much humour to the stage: the workmen's refusal to give up their day jobs contrasting with the childhood innocence of the original lost boys. Miles McCrone elicited much empathy from the audience as the left-behind Lost Boy, Hawkeye, receiving an enthusiastic cheer when he was finally reunited with the others. Finally, the chorus gave us a glimpse of the upcoming talent with their poetry recitations and musical numbers. The future looks promising.

To describe this as a village pantomime does not do it justice. The standard was incredible.

I am already looking forward to next year. Oh yes, I am!

*Review by Clare Mellor, photos by Louise Guron*



**NEW BRANCH OPENING**

# Have you heard? Independent Vets Opening Spring 2025

We can't wait to meet you!

For more information or to register  
visit [clarendonstreetvets.co.uk](http://clarendonstreetvets.co.uk)



Church Street,  
Stapleford,  
CB22 5DG



***Fitzbillies***

FOR  
EVERY OCCASION

Chelsea Buns  
Cakes  
Afternoon Tea

IN CAMBRIDGE  
OR BY POST

[www.fitzbillies.com](http://www.fitzbillies.com)

 **J. COX** | HEATING & PLUMBING

We are happy to offer  
a no obligation quote  
for any heating or  
plumbing work.

Phone:  
07763 657643

Email:  
[info@jcoxheatingand  
plumbing.co.uk](mailto:info@jcoxheatingandplumbing.co.uk)

[www.jcoxheatingand  
plumbing.co.uk](http://www.jcoxheatingandplumbing.co.uk)



## TIM PHILLIPS & Co Ltd Accountants

Independent, specialist service for:

- Small Business**
- Self Assessment**
- Personal Taxation**

FREE initial consultation – NO OBLIGATION  
Easy to find us – map on website. FREE PARKING

**Copley Hill Business Park**  
Off A1307 between Wandlebury and Babraham

**01223 830044**

[info@TPaccounts.co.uk](mailto:info@TPaccounts.co.uk) [TPaccounts.co.uk](http://TPaccounts.co.uk)

## SHELFORD SCHOOL

I have been a governor for over 25 years, with over half of that time being spent at Shelford, and never have schools lived through such challenging times of exponential change as they do now. It is good to know then, that all that we do in our school springs from the foundation of our Bible-based school vision, which for those not in the know, is this:

*'We live and work in harmony with love for one another, so that we can achieve our potential within a community of lifelong learners.'*

As governors, much of what we do is strategic, with a great deal of reading, meetings, discussion and emails making up our workload. In addition to helping set the vision and ethos, we make regular visits into school to hold leaders to account for educational and legal standards and ensure the (increasingly meagre) budget is being spent as effectively as possible. Yet with those visits come some of the best bits of being a governor – the joy of meeting and talking to the children. Watching the tiny chatterboxes who arrive eagerly in Reception mature into thoughtful, discerning Year 6 children ready to 'fly the nest' is always amazing.

This year one of our main aims is to facilitate the children's spiritual development, which is not something that can be measured by test results, budget figures or tick boxes. Our focus is on helping them develop three 'lenses':

- Inward, which focuses on individual reflection, opinions, pondering and wondering
- Outward, taking inspiration from others, past or present, along with the wonders of the natural world
- Upward, which focuses on a personal view of something greater than us. For many, this may be rooted in theology and the belief of a god; for others, what is beyond our world?

It was my privilege recently to spend a morning with Year 6, as they participated in GenR8's 'Cool Choices' workshop, which encouraged them to think about the decisions they will have to make and how to tell the difference between good choices and bad ones. Tattoos, vaping, smart phones, influencers, social media, junk food – all these and much more were discussed, along with a Christian perspective on peer pressure. The empathy, understanding and reflection they showed bode well for their future as they go from us in a few months' time.

*Liz Jenkin, Local Authority Governor*

**THE  
GOG**

**FARM SHOP**  
ESTD · CAMBRIDGE · 1919

BUTCHERY · DELICATESSEN · GROCERY · CAFÉ

**WWW.THEGOG.COM**

**SIMON  
SPARROW**

**CARPENTER  
AND JOINER**

**22 Woollards Lane  
Great Shelford  
Cambridge CB22 5LZ  
Tel: 01223 842380**



**D Hatter  
The Gas Specialist**



**Carbon Monoxide Kills**  
75% of last year's poisonings were due to lack of servicing!  
.....

D Hatter, specialist in servicing, repairs and installation of **DOMESTIC** gas appliances including boilers, fires and cookers.  
.....

Improve efficiency, save fuel, give your central heating system a new lease of life, have it **POWER FLUSHED**.

t: 01223 844866  
m: 07747 444 435  
e: davidhatter1@aol.com  
w: thegasspecialistld.co.uk






**Hearing services**

Our services include:

- Diagnostic testing
- Hearing aids
- Tinnitus treatment
- Earwax removal
- Cochlear implants
- Paediatric care
- Balance & Vestibular




BOOK YOUR  
**FREE**  
EAR HEALTH  
CHECK TODAY

Regulated by  
**Care Quality  
Commission**

Audiology House, 15 Woollards Lane,  
Great Shelford, Cambridge CB22 5LZ

01223 661 399 • [www.angliearhearing.co.uk](http://www.angliearhearing.co.uk)

## CONCRETE ROSE COLLECTIVE

Concrete Rose is a Community Interest Company (CIC) with a Christian ethos and a determination to both deliver and equip others to provide, first-class care and support for the most vulnerable young people across the UK. We work alongside and support, those of all faiths and none.

### Could you host a young person?

Sarah 17, was living alone in a three bedroom council house after unexpectedly losing her mum. With the pressures of living alone and studying becoming overwhelming, she was desperately in need of a safe, supportive place to call home. Having moved in with hosts in April, Sarah successfully passed her A levels and started university in September.

Sarah is one of three young people moving to university from our Supported Lodgings scheme:

*'Ever since I have moved in with my hosts, everything began to get easier. I finally had time to study in peace and work towards my goals'.*

This shows the difference a safe, stable home environment can make but, with an ever increasing waiting list, we desperately need more hosts.

### Could you help?

We're looking for individuals, couples and families with a spare room, who can support a young person transitioning toward independence after leaving care or difficult circumstances.

### What are Supported Lodgings?

Our Supported Lodgings programme offers a safe, peaceful space to a young person for around 3-24 months, to **study, train** and learn **independent living skills**. It's a chance to really make a difference and, unlike fostering, sits comfortably alongside a full time job.

Our Supported Lodgings package offers training, wraparound support, £600-800/month rental contribution and careful matching of host and young person.

### Could you...

Put up a poster? Share information with colleagues? Consider hosting?

**Contact:** Mike Farrington [mike@concreterose.co.uk](mailto:mike@concreterose.co.uk) / T:07881 926728

[www.concreterose.co.uk](http://www.concreterose.co.uk)



**Timber**

Paving & fencing  
Building materials

**Aggregates**

Decorating  
Ironmongery  
Hand tools

Garden machinery  
Sales & services  
Tree surgery

Foxcotte, Comberton Road,  
Barton, Cambridge  
CB23 7BA  
Mon—Fri 7.30am—5pm  
Sat 8am—1pm  
[www.foxcottecambridge.com](http://www.foxcottecambridge.com)  
01223 263 702



Open Tues to Sat  
29 High Street  
Great Shelford  
CB22 5FY

Phone: 01223 213162  
Email: [cara.coffee@romseymill.org](mailto:cara.coffee@romseymill.org)

**ANTONIO'S**

32 Woollards Lane,  
Great Shelford,  
CB22 5LZ

Appointments:  
ring  
01223 843345  
or use the  
Nearcut app

Open Mon - Sat  
For times see:  
[www.antoniosbarbers.com](http://www.antoniosbarbers.com)



• Home • Workplace • Public •

01223 430040

[www.cambridge-evpoints.co.uk](http://www.cambridge-evpoints.co.uk)

Contact our experienced team for all your EV charging needs.



After a buyer who loves  
what you've done?

Best talk to Bidwells



PROUD SPONSORS OF SHELFORD RUGBY CLUB

01223 624 573  
[talktobidwells.co.uk](http://talktobidwells.co.uk)

## LIBRARY EVENTS

### For adults

February is LGBTQ+ History Month, a celebration of queer history in the UK. The theme for 2025 is activism and social change: our library will be hosting displays and books in support.

**Craft & Chat** Every Friday morning 10.30am–12noon. No need to book.

**Engage Talk** Wednesday 26 February 2–3.30pm. Elisabeth Goodman-Spain – We Need to Talk About Climate Action. A donation of £2 is appreciated. Please stay for a drink after the talk. Please pre-book.

### For children

Please note that parents and carers must stay with their children who remain their responsibility during all library activities.

**Unicorn and Dragon Craft Event** Thursday 20 February 2–3.30pm. £2.00 per child. Limited places, please pre-book.

**Festival of Stories: Nature Stories and Craft** Tuesday 25 February 10.30 – 11.30am. Stories and crafts with a recycling theme. For families of children aged 2–5. Please pre-book.

**Story, Rhyme & Duplo Time** Every Tuesday at 10.30am. For children aged 0–4 years. Come and enjoy stories and rhymes led by our wonderful volunteers. This is a free drop in event.

**Lego and Duplo Club / Children's Games Club** Alternate weeks, Mondays 4–5.30pm. Suggested donation £1.00. Suitable for ages 2–10.

**Art Club** Every Saturday morning 10.30am–12noon. Suitable for ages 4–10. Drop in event. £2 donation. Don't forget Valentine's Day, we will have a Valentine themed craft event at Art Club on Saturday 8 February.

Please note that where pre-booking is required, you can either speak to library staff or email [Cambourne.referral@cambridgeshire.gov.uk](mailto:Cambourne.referral@cambridgeshire.gov.uk)

*Mel Abbiss, Community Librarian*

**Opening hours: see page 24**

**Contact details:** Telephone: 0345 045 5225

Email: [Cambourne.referral@cambridgeshire.gov.uk](mailto:Cambourne.referral@cambridgeshire.gov.uk)

Web: [www.cambridgeshire.gov.uk](http://www.cambridgeshire.gov.uk)



## OBITUARY: DAVID ADAMS (1944 -2024)

On Friday 20th December more than 300 people gathered at All Saints Church and Little Shelford Memorial Hall for the funeral of David Adams.

David was born in Kirkcaldy in Fife. His early love of music was nurtured at home leading him to study music at the University of Edinburgh.

David and Trish were married in Edinburgh in 1966 and not long after moved south to Cambridge. He became head of music at Sawston Village College (SVC) and soon began to play an increasingly significant role in the musical life of the local area.

David and Trish moved to Courtyards in Little Shelford in 1968. Trish died in 2023. Two of their three children still live locally; the third lives in America.

David was at SVC for 30 years, retiring in 1996. During this time, he inspired and encouraged generations of SVC pupils, his colleagues in the department and many students on placement from Cambridge University.

David was also the musical director and pianist for numerous productions by local groups such as Sawston Youth Drama (SYD), Sawston Light Opera Group, Duxford Workshop and Little Shelford Pantomime.

Following his retirement he worked as an OFSTED inspector, was instrumental in devising the music curriculum at a national level and was chair of a board of examiners for GCSE music.

David began playing church organs at the age of eleven. He first played the organ at All Saints, Little Shelford on 27th February 1974 for the funeral of the former organist. Following that service, he agreed to help at Sunday services for a 'little while' – and continued to do so for the next 50 years until he became ill in the autumn.

David's musical reputation was such that he was often called on to play for weddings or funerals in many other churches – sometimes as far afield as Norfolk. His own musical appetite was often satisfied by listening to choral music in Ely Cathedral or King's College Chapel.

In his retirement David was a very active Freemason, serving in a number of leadership roles as well as supporting events with his musical expertise. David was knowledgeable on many topics – not just music. He was outgoing and sociable – traits that will be remembered by his family, friends, musical



associates and also by customers of the Rose in Stapleford and the former Navigator in Little Shelford.

David's last weeks were spent in the Arthur Rank Hospice at Shelford Bottom. David was comforted by his faith and both he and his family were grateful for the compassion and empathy shown to them which helped them to face such a difficult time without fear or worry.

David is survived by his three children, Ruth, Mark and Pete and his brother Hadyn. He will be sadly missed but his musical legacy will live on in the talents he fostered in so many individuals.

*Polly Stanton*

*From words spoken by Mark Adams at David's funeral.*

## **GRANTA** Medical Practices

As I write this, the NHS is again in the throes of extreme winter pressures due to high levels of infectious diseases such as flu, Covid, respiratory syncytial virus (RSV) and norovirus. You can help stop the spread by following the three Cs:-

**CLEAN** Wash your hands often, using soap and warm water or use an alcohol-based hand rub.

**COVER** Cover your mouth and nose when you cough and sneeze. Use a tissue or your upper sleeve, not your hands.

**CONTAIN** If you get sick, stay home until you're well again. Try not to spread your germs to others.

Don't forget you can treat many minor illnesses at home with a well-stocked medicine cabinet. Colds and coughs, sore throats and upset stomachs can all be treated by having a supply of health care essentials such as pain relief (paracetamol/ibuprofen), cough and sore throat remedies, a first aid kit, upset stomach treatment, rehydration treatment and heartburn/indigestion treatment.

And finally ... it isn't too late to get a flu jab – they are available until the end of March – just give us a ring to book your appointment!

Wishing you all a safe and healthy February.

*Sandra East, Head of Patient Services*





**Dentons**  
Carpets & Flooring  
— Est 1969 —  
Carpets - Flooring - Blinds



### About Us

- ✓ Established in 1969
- ✓ Family run business
- ✓ Extensive showrooms
- ✓ In-house fitting team
- ✓ Knowledgeable sales team
- ✓ Reputable manufacturers
- ✓ Domestic and commercial

Quality Guaranteed

Free 'No-obligation' Quotes

91 High Street, Cottenham,  
Cambridge CB24 8SD

01954 250189

[sales@dentonscarpets.co.uk](mailto:sales@dentonscarpets.co.uk)

[www.dentonscarpets.co.uk](http://www.dentonscarpets.co.uk)

### Early Morning Pilates Classes

Little Shelford Memorial Hall  
CB22 5HG

Tuesdays 8.15 – 9.15am

Thursdays 7.30 – 8.30am

Later classes are currently fully booked  
but you can join a waiting list

Email to book your class:

[frances.pilates@gmail.com](mailto:frances.pilates@gmail.com)

[www.believeinpilates.co.uk](http://www.believeinpilates.co.uk)



believe in  
**pilates.**



### Rainbow Pre-school

A unique place for  
2-4 year olds to  
play and learn in  
Shelford

[www.rainbowshelford.co.uk](http://www.rainbowshelford.co.uk)

Tel: 07985 216603

[rainbow@shelford.cambs.sch.uk](mailto:rainbow@shelford.cambs.sch.uk)



### LYNNE HORTON INTERIOR DESIGN

- CURTAINS & BLINDS
- FURNITURE & JOINERY DESIGN
- UPHOLSTERY & SOFT FURNISHINGS
- COLOUR & FABRIC SCHEMES
- BATHROOM DESIGN
- FURNITURE & LIGHTING SOURCING



[www.lynnehortondesign.com](http://www.lynnehortondesign.com)

[lynne@hortondesign.org](mailto:lynne@hortondesign.org)

07703816370







## SHELFORD FESTIVAL & FEAST

With so many Fairs and Festivals not happening this year down to lack of funds and sponsorship, it is an absolute credit to the team of volunteers that have been running the Shelford Feast for the last 10, 20, 30 years that we look forward to another fantastic week starting on the **July 5 2025**.

With the decades of groundwork, the Feast has gone from strength to strength. Acts have got bigger, crowds have increased, events have multiplied. The

Shelford Festival and Feast now is a full week+one extra, and is filled with great live music, DJ sets, class comedy and still the local community events of quizzes, performances by SYD, local gatherings, Beer/Gin festivals and at the heart of it all the full Sunday event of **Feast Day** – this year on **Sunday July 6**.

It truly has been and continues to be a fantastic event for our local communities.

This year the Shelford Festival and Feast has Scott Mills opening the first night, performance from Rattlesnake Johnny mid-week, Jason Donovan opening the night of Friday the 11th with the local band Back To The 80s closing the night and finishing off the week, the return of Anthems Ibiza Orchestra.

It promises to be a fantastic year again.



You can follow Shelford

Festival and Feast 2025 on Facebook and Instagram with tickets for sale online at <http://www.shelfordfestival.org> and from Easter in village outlets.

This year the Shelford Festival and Feast team are looking to reach and exceed our £400K target for money raised since the event first started. To be able to do this support from sponsorship, advertising and donations are vital. If you can help, please follow the link Sponsoring the Feast or contact [sponsorship@shelfordfestival.org](mailto:sponsorship@shelfordfestival.org)

Your contributions will be most welcome and enable this great event to continue to thrive while still helping local groups and communities.

Here's to 2025!

## A PERSONAL REMINISCENCE

BY CLIVE ROGERS

I lived in Great Shelford from the age of three in 1958, leaving to join HM forces initially in 1972 and then more successfully in 1976. It was a wrench to leave but it was the only way to pursue my chosen career path at the time. While I have returned every year since then except 2020 (Covid) to visit friends and relatives I had never actually stayed in the village for any length of time until 2024 when my parents' house needed clearing following their passing on in fairly quick succession. What follows are my impressions of the village as it is now compared with how I remember it.

Change, some for the worse and some for the better is inevitable. Just as the village my mother Ruby Rogers\* knew during her early years in the 30s and 40s is different from the one in which I grew up during 60s and 70s, the Shelford of 2025 has changed from that of 50 plus years ago.

The leafiness and pleasant ambience throughout the village remains and the Rec surrounded by trees is a constant and largely unchanged feature. Long may it remain. However, notices at either end of Woodlands Road raise questions as to how welcome villagers are who still wish to use that route for a stroll between London Road and the Rec.

Another unchanged feature is the situation at the level crossing near the station. Always a bottleneck, and although the days of two consecutive slow goods trains going in opposite directions are gone, patience amongst drivers can run short. Sounding a car horn didn't make the gates open sooner in the 60s and 70s and it doesn't work now although some still try. No doubt the level crossing gates are still a useful and sometimes valid excuse for late arrivals at the school.

There is generally a greater vibrancy regarding social activities culminating with the Shelford Feast which is a credit to the organisers. Community spirit is very much alive with varied activities available to those who want them. *The Village News* is significant for its role in the community and a valuable addition to village life. Of particular note and merit are the Community Wardens, who played such a significant supporting role during my parents increasing frailty. Pastoral care readily provided by the Rev Dr Julie Norris was much appreciated; she is a great asset to the village.

Big skies and views of open country on the eastern edge of the village and also from Buristead Road are still there to enjoy, although such vistas are under threat particularly along Granhams Road, especially if East-West Railway proceeds with quadruple tracks and an elevated junction.

The Woollards Lane I knew contained a range of shops. A hardware store, newsagents, butchers, drapery, chemists, tat (Ma Mott's), grocers, a garage and a bank all served the village well. Another butchers, a greengrocer, the Co-op, an electrical shop (Lavail, now Lays) and also a bank could be found on the High Street. There was a dedicated post office on High Green and a small grocer at Freestones Corner in what was the village bakery.

There are still a variety of shops but they have changed in character, some being more upmarket than in the past. There are now places to eat where previously they were unknown. What is noticeable is the proliferation of estate agents. The banks have disappeared along with the hardware store and newsagent. It is good to see the store on Hinton Way still in business and now with a Post Office counter. Traffic in the village centre seems worse but that may just be a perception, after all cars have got larger.

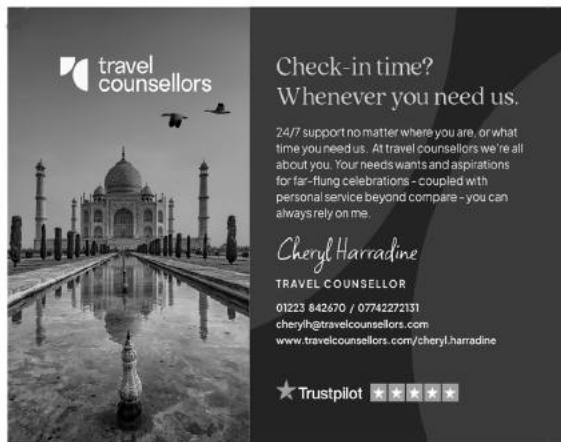
As elsewhere, pubs were a larger part of village life than they are now. The DeFreville is now a wine bar but the Railway Tavern has gone while the Square and Compasses was closed for a time but has now fortunately reopened under new management. The Plough has also survived as a pub and occasional music venue and is very much alive especially when The Spree are playing.

What was once a significant Police Station is now housing, a pattern repeated elsewhere and not a positive move.

Unfortunately, when passing through the village there can be an impression of scruffiness: the roads are riddled with potholes and pavements are little better. Unkempt grass verges and even the green at Freestones Corner do not give a positive impression although recent efforts have led to some improvements. Certainly, when driving, extra caution is needed to avoid tyre and wheel damage. Additionally, drivers need to be aware that while most cyclists have good road sense, the proportion of inconsiderate and entitled cyclists has increased. Some appear not to know road junction procedures or what a red traffic light means.

One rather worrying recent development is the concept of 'Greater Cambridge'. Looking at future plans it would seem Shelford will eventually be swallowed up. The high calibre Parish Council appears to be doing its best to resist but I fear they are dealing with irresistible forces; one can only wish them luck.

Walking around the village one can't help noticing the tall security gates at various residences, it is worrying that some feel the need for them, a situation not unique to Shelford. Ugly graffiti on railway installations brings an unwelcome urban ambience to the village. Are the recent ram raids a foretaste of Greater Cambridge?




**travel counsellors**

Check-in time?  
Whenever you need us.

24/7 support no matter where you are, or what time you need us. At travel counsellors we're all about you. Your needs, wants and aspirations for far-flung celebrations - coupled with personal service beyond compare - you can always rely on me.

*Cheryl Harradine*  
TRAVEL COUNSELLOR  
01223 842670 / 07742272131  
cherylh@travelcounsellors.com  
www.travelcounsellors.com/cheryl.harradine

★ Trustpilot 



**WATERLILIES**

SKIN CLINIC • BEAUTY

Call 01223 844700 Book online at [www.waterlilies.org.uk](http://www.waterlilies.org.uk)

2d Dolphin Way, Off London Road, Stapleford, CB22



QUALITY FLOORING SUPPLY,  
INSTALLATION & AFTERCARE

**Specialists in  
Wood Flooring,  
Carpets & Vinyl  
Flooring Solutions**

"We've had a vinyl floor fitted in a loft bedroom. Sam and Nigel were excellent throughout. The whole experience was made very stress free due to their professionalism and the floor looks amazing. I would not hesitate to recommend The Art of Flooring."

**Juliet Mills, Cambridge**

**01223 755 802**

Please quote Great Shelford Mag

**Best of houzz 2020 SERVICE** **Best of houzz 2020 DESIGN**

141 Milton Road Cambridge CB4 1XE  
[www.ArtofFlooring.co.uk](http://www.ArtofFlooring.co.uk)



**CAMBRIDGE**

**KIDS CLUB**

**WHERE FUN NEVER STOPS!**

**WE'RE HIRING**

WE ARE SEEKING CREATIVE & ENERGETIC PLAYWORKERS FOR OUR BREAKFAST & AFTERSCHOOL CLUBS ACROSS CAMBRIDGE

HOURS OF WORK - 07.30-09.00 & 14.30-18.15 MONDAY TO FRIDAY

**£300 BONUS AVAILABLE NOW!**  
TAC APPL. APPLICABLE UNTIL 30/06/24  
PAYABLE ONLY ON SUCCESSFUL COMPLETION OF 3 MONTHS PROBATIONARY

PREVIOUS EXPERIENCE IN CHILDCARE OR PLAYWORK DESIRABLE

ADDITIONAL HOURS ALSO AVAILABLE OUTSIDE OF TERM TIME IN OUR SCHOOL HOLIDAY CLUBS

EMAIL: [INFO@CAMBRIDGEKIDSClub.COM](mailto:INFO@CAMBRIDGEKIDSClub.COM)  
FOR FURTHER INFO & TO APPLY NOW!

PAY RATE BASED ON EXPERIENCE, STARTING AT £12/HOUR  
STAFF BENEFIT - FREE CHILDCARE

Opportunities for walking have improved with Jenny's Path being a good example. In the 60s it was a tradition amongst my group of friends to walk around the field behind Buristead Road after harvest, hopefully avoiding a rebuke for trespassing from Mr Funston the farmer. Now a stroll by the Granta and under the railway is available to all although possibly not as much fun now it is legal.

The DNA path to Addenbrookes through open fields has made Nine Wells more accessible although pedestrians need to be wary of cyclists. In the past visiting Nine Wells was something of an expedition either over Granhams Hill or by taking a shortcut via Whitehill Farm albeit at the risk of being stopped by the farmer. Unfortunately, Nine Wells' encirclement by Cambridge looks imminent.

One thing that is unchanged is the proximity of the school to productive land. Hopefully as in the past, the present and also future generations of village children will see the connection between the land, seasons, agriculture and food and realise that things to eat don't appear on supermarket shelves by magic.

Cambridge University was and still is a major employer, and there was a degree of mystique attached to those associated with the higher academic and scientific aspects. The sprinkling of those residents were generally known as 'university bods' which at the time seemed good enough to describe their occupations. The expansion of biotech and disciplines associated with IT seems to have increased the proportion of the highly educated, much to the benefit of those offering services requiring practical skills. However, one worrying aspect of that is the number of unmarked white vans cruising residential locations presumably touting for business. On three occasions while clearing my parents' house we had cold callers who 'happened to be nearby' offering services such as tree surgery, handyman and gardening.

My final posting with HM Forces was in East Anglia and on discharge it would have been good to remain but work took me to the West Country. However, my roots will always be in the East. Should I return, it would not be to Shelford as the place I knew has gone, and as Greater Cambridge encroaches current villagers may well end up feeling the same.

So, there you have it: My personal impressions of Shelford after time away, some positive some negative. All in all, still one of the better places to live although my view is tempered by memories of how things were and the probability of greater change to come.

*Clive Rogers*

*\*See Great Shelford Village News August 2024 P37*

*Responses to this article from our readers would be welcome! [Editor]*

# Poorly PC?

The PC Doctor will get your PC back in tip-top health and squeaky clean!

## PC Doctor Edward

(your local computer GP)

# 07 929 660 981



### Welcome to Coach House Health Care

– a refurbished and renovated clinic, situated in the grounds of Anstey Hall, where you can now find all your health and well-being practitioners under one roof.

- Podiatry/Chiropody
- Physiotherapy
- Osteopathy
- Sports Massage
- Clinical Psychology
- Plastic Surgery Consultations  
including skin lesion assessments
- Consultant Dermatology
- Clinical Hypnotherapy
- Medical Aesthetics
- Plastic and Cosmetic Surgery
- Electrocardiograms (ECG or EKG)



Armesh Patel, Plastic Surgeon and co-owner

Lorna Bacon, Podiatrist and co-owner



#### COACH HOUSE HEALTH CARE

The Courtyard, Anstey Hall, Maris Lane, Trumpington, Cambridge CB2 9LG

01223 340491

reception@coachhousehealthcare.co.uk

www.coachhousehealthcare.co.uk

Free car parking and wi-fi

#### CLINIC ROOMS AVAILABLE TO RENT

If you are a qualified practitioner, looking for a clinic to practise, contact us to find out how to join our team. We can now support CQC registered clinicians to use us as a location for their CQC registered procedures.



## JASON KIRBY

Professional Painting  
& Decorating Ltd

All Aspects of Internal & External Decorating  
Period, Residential & Commercial Properties.

Wallpaper & Mural Install

Kitchen Cabinet & Furniture Re-Sprays.

Floor Sanding & Restoration.

City & Guilds, NVQ Qualified.

Service, Quality & Reliability.



01954 211775

www.jasonkirbyltd.co.uk



### Safe Ear Wax Removal

Accredited by UK Microsuction.  
Member of British Audiology Association.

## Sue Levy

Sawston

07779 674924



## CSET BUSWAY

### **CSET Busway Special meeting on Tuesday 18 February. Your last chance to stop the bus road through the green belt!**

We reported in December that Cambridgeshire County Council had voted for the CSET five mile bus road through the countryside between the A1307/A11 junction South of Babraham village and Addenbrookes.

The GCP have now submitted their Transport and Work Act Order (TWAO) to the government to proceed. We object to this bus road because there is a much better value alternative that does minimal harm to the countryside. Can you object and add your voice? To see how to do this go to

<https://www.cambridgeppf.org/blog/last-chance-save-southeast-cambridge-countryside>

By objecting, we will trigger a public inquiry which will take place this summer where we will present our case to the Inspector. Can you make a donation? Every contribution matters - whether it's £50, £500, or £5,000. This will help our legal, transport and environmental team to make our case.

Please join us at **Great Shelford Memorial Hall, Woollards Lane CB22 5LZ on Tuesday 18 February at 7.30pm** to hear the full story and add your support.

Please take a look at our website [www.BW4b.org](http://www.BW4b.org) for the details and please register your support. This will ensure you receive updates as they happen.

You can donate at [cambridgeppf.org](http://cambridgeppf.org) then click on Protecting Cambridge and then Campaign, or scan the QR code.



## ROAD WORKS



The busway will cross Hinton Way briefly stopping vehicular traffic every time it crosses the road.

More imminently Station Road from Freestones Corner to the railway line will be closed throughout February.

Yes, they did close it this time last year but that was for two months, so maybe things are improving ...

## CAMBRIDGE FLOWER CLUB

### 2025 programme

Whittlesford Memorial Hall, Whittlesford CB22 4NE

**on third Thursday** at 7.15pm

Refreshments 6.45pm. Annual sub. £45, visitors £10 each meeting

**February 20** AGM with speaker

**March 20** Elizabeth Robertson NAFAS Demonstrator:

‘First Days of Spring’

**April 17** Christine Long NAFAS Demonstrator:

‘Loosely round the Solar System’

Further information from Freda Orgee [fredaorgee@gmail.com](mailto:fredaorgee@gmail.com) 01223 891464

or Alison Drake [drakealisonn@gmail.com](mailto:drakealisonn@gmail.com) 01223 840117

## SOUTH CAMBS ORGANIC GARDENERS

*A friendly group for everyone who wants to grow in a sustainable way,  
without harming nature or ourselves*

Are you interested in how your food is produced?

Duncan Coston from Responsible. Sustainable. Knowledgeable (RSK) Agricultural Development Advisory Service (ADAS) will talk about modern crop production.

ADAS has advised on farming and the environment for 75 years. To meet today's challenges, farming is adapting, using less pesticides and more sustainable farming methods. Duncan will talk about integrated pest management, agroforestry and other new initiatives.

**Monday 17 February at 7pm**

**Admission £2, pay on the door**

**Cox's Close Community Room, Stapleford**

## LITTLE SHELFORD LOCAL HISTORY SOCIETY

Little Shelford Memorial Hall

Wednesday 12th February 2025 at 7.30pm

a talk by David Martin

**‘The Little Shelford gentleman who helped put a man on the Moon’**

All welcome

# D.L.M. AUTOS

63a Orchard Road, Great Shelford CB22 5AA

## MOT - SERVICE - REPAIR

### 01223 844828

[www.dlmautos.co.uk](http://www.dlmautos.co.uk)



**ENTIRE**  
GROUP



The Complete Gas Heating and Plumbing Company

Plumbing • Heating • Gas  
Bathrooms • Water Softeners  
Property Maintenance

Tel: 01954 204044 • Web: [www.entiregroup.co.uk](http://www.entiregroup.co.uk)  
Email: [service@entiregroup.co.uk](mailto:service@entiregroup.co.uk)



### The Country Store

*Pet, Equine, Smallholder,  
Shooting supplies,  
Country clothing,  
Wild bird food*

Unit 12a, Sawston Park,  
Pampisford, Cambridge  
CB22 3EE

[www.thecountrystore.co.uk](http://www.thecountrystore.co.uk)  
Tel 01223 837977



Over 30 Years Experience

- Plaster Boarding
- Replacement Ceilings
- Gyproc Coving • Pebble Dash
- Listed Building Restoration
- Skimming • Skimming over Artex
- Rendering • Wet Dash
- Traditional Lime Render
- Insurance Work Undertaken

Andrew W Renton  
18 Badcock Road, Haslingfield,  
07720 715045  
01223 873387

[renton@awrplastering.co.uk](mailto:renton@awrplastering.co.uk)

<http://www.awrplastering.co.uk>

## Cambridge Cats Protection Making a better life for cats

Call 01223 528 312 to provide a forever home for a cat or kitten in our care. For neutering advice call 01223 236 188.



Cats Protection is a registered charity 203644 (England and Wales), SC037711 (Scotland) and is listed as a Section 167 Institution by the Charity Commission of Northern Ireland. BC\_1770



## COUNTRY MARKET

It was back to work on 15 January after our New Year break. As a number of our producers could not be with us, it was gratifying to find so many customers waiting for the doors to open. It wasn't long before there was a queue for the early morning cuppa and it was great to see folk back and chatting, perhaps enjoying a good 'catch-up' time.

Though this is the quiet season for the garden section, a pot of hyacinth bulbs brings a bit of extra cheer in your kitchen on a grey morning. The craft tables remain well stocked with hand knitted woollies for all ages, home-made soaps and creams, greetings cards and lots more. Our bakers are back with their home baking: interesting breads, cakes, cookies, crumbles, scones and savouries. Further along the tables are jars of local honey, marmalades, jams, jellies and chutney.

Keep coming to the Market; there's plenty to tempt you, and stay on for a chat over a hot drink and home-made cookie. A big welcome awaits you especially if you are interested in becoming a producer as a cook, gardener or crafter. To find out more, just come and talk to us and follow us on our Facebook page at Great Shelford Country Market.

*Dorothy Doel*

*Market is in the Memorial Hall, Woollards Lane every Wednesday morning from 9.00 to 11.30am*

## PLAYSCAPE

### HAVE YOUR SAY - NEW PLAYSCAPE CONSULTATION

We have some improved proposals for the next phase of the Great Shelford Recreation Ground Master Plan. Great Shelford Parish Council has asked us to conduct a new consultation on these before it makes a decision.

We are proposing to upgrade the old basketball hoop by turning it into a 3x3 basketball court and to install some static workout equipment for young people and adults on the rec to improve fitness opportunities.

**For full details and to respond to a quick survey, please go to our website: [www.shelfordplayscape.org](http://www.shelfordplayscape.org)**

We need to demonstrate community support to funding bodies when applying for grants for these initiatives, and to the Parish Council, so please share this consultation with friends and neighbours, school friends, children and grandparents. Thank you!

*Eleanor McCrone*

# 2G3S REPAIR CAFE

Matching experienced repairers with people who need stuff fixed

**Also featuring a SWISH clothes swap**

## Great Shelford Memorial Hall

### Repair Cafe



We can help with clothes and fabric, jewellery, electrical and electronic devices, and other items. Booking is recommended.

### SWISH

*We accept well-loved, clean garments – bring along at 2:15pm*



*SWISH open from 3pm for swapping. Open to all - you don't need to have brought clothes to take items away.*

Repair Café and SWISH are both FREE, but donations are welcome.  
Tea/coffee and cake will be provided!

## Saturday 22<sup>nd</sup> February 2025 2pm - 5pm

Great Shelford Memorial Hall, Woollards Lane, Great Shelford, CB22 5LZ

For more details & to book in an item for repair, scan the QR code or visit: <https://bit.ly/41iYy27>



Email: [2G3Srepaircafes@gmail.com](mailto:2G3Srepaircafes@gmail.com)



## NEIGHBOURHOOD PLAN

Consultation on the submitted Plan closes on 12 February.

The Stapleford and Great Shelford Neighbourhood Plan (NP) and its accompanying documents were submitted to the Greater Cambridge Shared Planning (GCSP) team on 21 Nov 2024. After three years of hard work shaped by multiple consultations with residents, workers and other stakeholders in our area, this represents what we as a community aspire to for the future of our parishes.



A final ‘Regulation 16’ consultation on our NP is now being run by Greater Cambridge Shared Planning (GCSP) services on behalf of South Cambridgeshire District Council (SCDC) (all previous consultations have been organised and run by the NP steering

group). This started on 18 December 2024 and ends on 12 February 2025.

The consultation is effectively an opportunity for individuals and organisations who contributed comments to the ‘Regulation 14’ consultation held in March/April 2024 to see whether/how they influenced the submission version of the NP. If you were one of these people, and if you supplied your personal details, you will already have received notification from GCSP that the submitted NP is available to view.

Regulation 16 consultation materials can be found at <https://consultations.greatercambridgeplanning.org> – scroll down towards the bottom of the page to find the link to the Stapleford and Great Shelford Neighbourhood Plan. A paper copy of all consultation materials is available to view for the duration of the consultation during normal opening hours at Great Shelford Library.

*Jenny Flynn*

*Chair, Stapleford and Great Shelford Neighbourhood Plan steering group*

## Care For Trees



Qualified  
Reliable  
Insured  
Affordable

For a free quote call **Mike Wallman** on 01223 846390 or email [info@carefortrees.co.uk](mailto:info@carefortrees.co.uk)

FAMILY **Barker Bros** BUTCHERS  
EST 1843



**Packaging Free Vegetables now on Sale**

**QUALITY, LOCAL MEAT FOR EVERYDAY**  
43 High Street, Great Shelford  
Tel: 01223 843292 [www.barkerbrosbutchers.co.uk](http://www.barkerbrosbutchers.co.uk)

## J M R Electrical



**Electrical Contractor**

APPROVED CONTRACTOR      DOMESTIC INSTALLER

All Domestic, Industrial & Commercial work undertaken

21 Ashen Green, Great Shelford, Cambridge  
Email: [jmr.electrical@hotmail.com](mailto:jmr.electrical@hotmail.com)  
Tel: (01223) 844680 Mobile: 07766 68 38 86

## QUALITY BESPOKE PICTURE FRAMERS

**SIMON ROBINSON & SON**

Professional, Friendly Service  
Over 25 years' experience

Wide Selection of Frames  
Conservation Materials Used  
UV Protective Invisible Glass

Artwork/Photography  
Needlework/Tapestry  
Oil Paintings and  
Canvases Stretched  
Unusual Objects Framed  
Made to Measure Mirrors  
Limited Edition Prints Available

## THE Rose

Simply great Thai food

for more information and menus visit:  
[www.therose-stapleford.co.uk](http://www.therose-stapleford.co.uk)  
or call:  
**01223 843901**  
[info@therose-stapleford.co.uk](mailto:info@therose-stapleford.co.uk)  
81 London Road • Stapleford • CB22 5DG

**Tel. 01223 873123**  
Opening Hours:  
Tues-Fri. - 9am-5.30pm  
(Saturday - By Appointment)

[www.robinsonframes.co.uk](http://www.robinsonframes.co.uk)  
[lester@robinsonframes.co.uk](mailto:lester@robinsonframes.co.uk)

STUDIO 6, PENN FARM,  
HARSTON RD,  
HASLINGFIELD, CAMBRIDGE  
CB23 1JZ  
(AMPLE PARKING)

## 2G3S EVENTS

**Book Club** on Tuesday 18 February at the Three Horseshoes in Stapleford at 8pm. The book this time is 'It's Not That Radical' by Mikaela Roach. If you are interested in coming along, please email us, in case we need to let you know about any last minute changes. You don't need to have read the book first to join in the discussion.

**Repair Café and SWISH** at Great Shelford Memorial Hall (a new venue to us) on Saturday 22 February from 2pm to 5pm:

**SWISH** is a clothes swap that relies on donations of unwanted clothes that are clean and in good condition, brought in on the day or donated in advance. Once these are all on display, the SWISH opens, and people can browse the display and hopefully find something new (to them) that they can take away. We'll accept clothing on the day from 2.15pm to 3pm, and the SWISH will open at 3pm and close around 4.30pm. Anyone can choose items to take away – you don't have to have donated clothes. If you have clothes to donate in advance, contact us on [2G3Srepaircafes@gmail.com](mailto:2G3Srepaircafes@gmail.com).

**Repair Café** - bring along your broken item and a skilled volunteer will help you fix it! We can tackle a wide variety of repairs including jewellery, clothes and fabrics, electrical and electronic devices and other items. Please note that we will not be able to replace cracked screens on phones or tablets. The repairers are brilliant and can fix a lot of things but there are no guarantees. Booking is highly recommended to avoid a long wait on the day, and to make things fair we politely request only one item per person. Bookings open on 5 February and remain open until 17 February (see p37). There will be tea and cake of course, so you can bring clothes in, have a cuppa or get a repair done, then browse the clothes rails. The whole event is free, but donations are welcome towards our costs.

**Dr Bike** continues to run its volunteer run weekly bike repair sessions at the Old Slaughterhouse in Stapleford, 3–5.30pm every Tuesday. Children are welcome to come and learn how to look after their bikes and do simple maintenance and repairs, but please attend with them (for safeguarding reasons). For more information, contact [drbikestapleford@gmail.com](mailto:drbikestapleford@gmail.com). You can also book a time slot at that address, though this is not essential.

If you are interested in green matters and the environment at all levels (individual, local, national, international), send an email to [mail2G3S@gmail.com](mailto:mail2G3S@gmail.com) to sign up for our monthly newsletter, or to get more information about our meetings. We are a friendly group and welcome anyone who wants to come along to one of our events or to find out more about how we can live sustainably. Also see our Facebook page and our website [2g3s.staplefordvillage.org.uk/](http://2g3s.staplefordvillage.org.uk/).

*Helen Hale*



**FOOT PROBLEMS?**  
**Celia Kenney**  
 (HCPC Registered Podiatrist)  
**Call 07939 227195**  
 (For home appointments)

Treatments cover:  
 Nail cutting and other nail conditions  
 Corn and callus removal/reduction  
 Fungal infections and athletes foot  
 Verruce/warts

The Beechwood Practice  
 Cambridge CB2 1NT  
**Call: 01223 315541**

**GC**  
**GARDEN DESIGN**

Refresh your existing borders  
 Design consultation on-site  
 Full design service

Sustainable . Eco-friendly . Bespoke

[www.gcgd.co.uk](http://www.gcgd.co.uk)  
 contact us: [info@gcgd.co.uk](mailto:info@gcgd.co.uk)

 **TMElectrical**  
 SERVICES

**The Complete Electrical Service**  
**Solar PV - Battery Storage - Vehicle Charging**

**Local - Experienced - Competitive**

E: [enquiries@tm-electrical.com](mailto:enquiries@tm-electrical.com)  
[www.tm-electrical.com](http://www.tm-electrical.com)  
**Tel: 01223 441111**

**FREE ESTIMATES**



*Christopher*  
**LOCKSMITH**

**ARE YOUR LOCKS BEHAVING BADLY?**

We Value Old Fashioned Customer Service  
 A Local Trusted Family Business Since 1989

- 🔑 Specialist in UPVC & Wooden Doors
- 📞 No Call Out Charge
- 🔒 No Fix No Fee
- 🛡️ All Work Fully Guaranteed
- 👴 10% Senior Citizen Discount



For More Advice & Help  
 Call Christopher:  
**07772 111 222**

[www.christopherthelocksmith.co.uk](http://www.christopherthelocksmith.co.uk)

**MegaStorage**  
 SAFE & SECURE SELF STORAGE

**Self Storage in Sawston**  
**Clean, Dry & Secure, 24/7 Access**

 **ssa**  
 self storage association  
 United Kingdom

[www.MegaStorage.co.uk](http://www.MegaStorage.co.uk)

**01223 833 777**



## OLD NEWS

### Extracts from The Great Shelford Chronicle 1774-1868

*Compiled and re-published by Anne George, Glynis Trundle,  
Margaret Ward and Alan Bullwinkle, 1993*

#### **21 February 1857**

STATION MASTER ABSCONDS – On Monday last, Richard Lines, the railway station master of Shelford, absconded, taking with him about £250, the property of the Eastern Counties Railway Company. He went first to London and then to Whittlesford, at which place he was apprehended and secured yesterday by one of the County Constabulary. He will be examined by the County Magistrate this day (Saturday).

#### **20 February 1858**

ACCIDENT – On Tuesday last the 16<sup>th</sup> inst. A shooting match at pigeons took place at the Railway Tavern, for a fat hog. In the course of the afternoon, a young man named Arthur Austin met with a serious accident by the bursting of his double-barrelled gun. The shattered fragments of one of the barrels were driven through his left hand, lacerating it fearfully.

#### **4 February 1860**

POACHING CASE – Edward Peter and Alfred Powter of Great Shelford were charged with having on the 16<sup>th</sup> inst. At Stapleford, used snares for the purpose of trapping hares on the 23<sup>rd</sup> inst. Mr Headly is in the occupation of the land and appeared to support the charge. The defendants all denied the charge stating that they never left the road. Mr Garratt conducted the case for Mr Headly. William Taylor in the employ of Mr Headly deposed to having been requested to look after the snares by Mr Headly. The snares were so placed as to be visible from the road if they were looked for, but perhaps could not be perceived by a passer-by. He lied down in a ditch, about a chain from the snares. Whilst he was in that position he saw the defendants coming up the road led by Peter and put the snares in their pockets. The magistrates fined the defendant Peter 5s. and the expenses, making a total of £1.0s.6d. The other two were dismissed because they were not actually proved guilty of touching the snare.

#### **8 February 1862**

DESERTION – SIMON POWTER, labourer, of Great Shelford was charged with leaving his wife and family chargeable to the parish, he being at the time capable of maintaining them. Mr. Ficklin told the prisoner that this was not the first time he had been there, and sentenced him to three weeks imprisonment with hard labour.

## WI



Our most recent news is the grateful receipt of a grant from The Shelford Feast. Our first purchase was a card reader that aided us significantly while serving refreshments at the switch on of the Great Shelford village lights in December. The Shelfords WI supports other village events

including The Shelford Feast, and the Fun Day (though this was cancelled in 2024 due to inclement weather) thus raising significant funds for other organisations. Thank you to the members who volunteer to help at these events.

Socially, the December meeting was an opportunity to partake of some Christmas fare and make Christmas tree decorations under the tutelage of Sue Tombs. The following day the decorated tree was moved into St Mary's Church to support the Church and Community Christmas Tree festival where again we served refreshments.

Disappointingly, the speaker for the January meeting was suffering from Covid and unable to come. One of the functions of the WI nationally is to propose, vote and act on resolutions. Concerns this year are 'Raising awareness of issues around incontinence', the 'Provision of CPR training', 'Joining the Repair Revolution' and 'Eliminating problems with the recycling of medical packaging'. With the aid of introductory material in the monthly WI Life magazine and quizzes we were able to make choices on which one of these resolutions will be debated nationally in June.

After helping a member eat her surprise 80th birthday cake we followed with plenty of friendly chat and several enjoyable rounds of Scategories.

Dr Caroline Shenton will be speaking on 'The Day Parliament Burnt Down' at the meeting on Thursday 6 February at 7.30pm in the Community Room behind St Mary's Church. Visitors and potential new members would be very welcome. We aim for a balanced mix of speakers, activities and visits which should be of interest to many women in and around The Shelfords. Do come and meet us soon on the first Thursday evening of the month. There's another interesting speaker in March.

*Eleanor Witter The Shelfords WI President*

## PIPPA HEYLINGS MP

### EXTRACTS FROM OUR MP'S NEWSLETTER



#### **East-West Rail Consultation**

As soon as the Government gave the go ahead for the next phase of consultation for East West Rail, I met with the new CEO of East West Rail. I made it very clear that the previous consultation utterly failed to engage genuinely with residents or take on board their concerns.

As your MP, I will also continue to interrogate the business case and whether the Government actually has the funding for this project.

#### **Calling for a Public Inquiry on the proposed Busway**

As I promised during the General Election campaign, I have made a submission to the consultation on the Cambourne to Cambridge busway. I highlighted constituents' concerns both regarding the urgent need for improved public transport links to address isolation in villages and expand post-16 work and education opportunities for young people, in particular; and regarding the impact on wildlife habitat particularly in sensitive areas like the Coton Orchard and the off road section east of Hardwick.

Clean, green travel is crucial for improving connectivity, access and climate goals, but this must be balanced with protecting the character of our villages and conserving and restoring biodiversity and wildlife habitats.

Visit <https://www.pippaheytings.org.uk/campaigns>

#### **NOTE**

The *Great Shelford Village News* is published by the Editorial Committee, whose members are delighted to receive the many regular and occasional contributions that make it all possible. The Committee accepts such contributions in good faith, but cannot take responsibility for the accuracy of information contained therein. The views expressed are those of the contributors and do not necessarily reflect those of the Editorial Committee. The Committee, of necessity, reserves the right to amend or reject items, for a variety of reasons. In these cases (unless the changes are minor), every reasonable effort will be made to contact the contributor to obtain agreement.



## FOOTBALL CLUB



A belated Happy New Year to everyone as we enter what could be an exciting second half of the football season. Due to the Christmas break and the inclement British weather, there are only three games to report on but three excellent results. A brilliant performance from the first team saw them end the year with a 5-0 thrashing of old rivals West

Wrattling to sit nicely on top of the league table. Admittedly the chasing pack have games in hand, but it is always good to have points on the board. Due to the frozen spell the away game at Comberton United was switched to an all-weather pitch and a comfortable 4-1 win saw them ring in the New Year in style. The reserves had to travel to Haverhill Reserves for their final game of the year and a 4-1 win kept them in touch with the league leaders and with high hopes for the rest of the season.

There will be games on the rec on most Saturdays so why not come along and support your local club.

*Terry Rider*

## TENNIS



In these dark days of winter we all need cheering up. Something to look forward to. An event to warm the very cockles of a chilly tennis player. As luck would have it, GSTC has just the thing. Yes, it's the club's annual general meeting, so gather ye all at 7.30pm in the pavilion on the rec on Monday 10th February, for a wonderful evening of drinks, nibbles and sports administration. Among the exciting agenda items are development and fundraising proposals for the clubhouse. Those *News* readers with good memories (ie all of you) will doubtless recall a very similar item at last year's AGM. But you know Rome wasn't built in a day, and nor will the new

improved clubhouse. Says the committee, 'We would love to see as many of you there as can make it, and as in recent years, we will be holding a prize draw to win a club hoodie.' February's member of the month is Judie Simmonds who is even better at cheering us up than an AGM. She brings a very particular brand of fizz based fun to organised social tennis at the club. Judie is always cheerful and loves fancy dress tennis, although in this photo she is just in her standard competition whites. Congrats Judie, you're an angel!

*Stephen Chittenden*

## TRADITIONAL RESTORATIONS

**A FRIENDLY LOCAL SERVICE FOR ALL TYPES OF ANTIQUE & MODERN FURNITURE**

**A complete restoration service:**

- All types of furniture repairs
- Traditional French polishing
- Hard-wearing, high-quality lacquer finishes
- A comprehensive re-upholstery service



Over 20 years working in the local area  
Free estimates & advice given on all work

**JONATHAN PORTER**

**5 BABRAHAM ROAD, SAWSTON, CAMBRIDGE CB22 3DQ  
TEL 01223 835515 MOB 07932 611184**

## STEVE the PLUMBER

Steve the Plumber is a local plumber with a friendly, helpful and reliable service. Small or larger jobs undertaken. Competitive rates.



Please call 07803922517 or email [steve\\_the\\_plumber@me.com](mailto:steve_the_plumber@me.com)



- Dance classes from 3 years
- Fully qualified and experienced teachers
- Dance exams and performing opportunities available

- Ballet
- Contemporary
- Tap
- Street Dance
- Modern Theatre
- Musical Theatre
- Jazz
- Body Conditioning

Our mission is to inspire a love of the performing arts through high quality dance instruction in a disciplined, inclusive and nurturing environment, whilst encouraging a strong work ethic, confidence and creativity.

Trial classes available  
Email: [dancededicationnewton@gmail.com](mailto:dancededicationnewton@gmail.com)  
Web: [www.dancededicationuk.com](http://www.dancededicationuk.com)



## AMS (EA) Ltd

Driveways, Landscaping & Plant Hire

**Our areas of expertise include:**

- All Driveways & Block Paving • Driveways Cleaning & Sealing**
- Patios & Paths • Fencing • Drainage • Turfing & Seeding
  - Artificial Grass • Site & Garden Clearance (Licenced)
  - Grab Hire & Plant Hire • All Aggregates Delivered

All paving work comes with a 5yr min Guarantee

Call for **FREE** estimates and bookings:

Please visit our websites for examples of our work & refs:

Office: 01638 721883 or Site: 07780 261206  
Newmarket, Cambridge and Ely

[amsdriveways.co.uk](http://amsdriveways.co.uk)



BRADSTONE  
Asitred

BrettApproved



[amsaggregates.co.uk](http://amsaggregates.co.uk)

[www.amsealtd.com](http://www.amsealtd.com)

# ANGLIA TREE CARE

*A O'Connor*

**Tel: 01223 424454**

23 King Street  
Cambridge CB1 1LH

[www.angliatreecare.co.uk](http://www.angliatreecare.co.uk) Email: [info@angliatreecare.co.uk](mailto:info@angliatreecare.co.uk)

*Tree surgery  
Stump grinding  
Hedge maintenance  
Fully qualified & insured*

*All work carried out to British  
Standard BS3998  
Member of the Guild of  
Master Craftsmen*



## WHAT'S ON IN FEBRUARY

| SAWSTON CINEMA           |                                 |
|--------------------------|---------------------------------|
| 20 February              | The Importance of Being Earnest |
| <i>sawstoncinema.org</i> |                                 |

| CAMBRIDGE UNIVERSITY – MUSEUMS & GALLERIES    |                                                                                       |
|-----------------------------------------------|---------------------------------------------------------------------------------------|
| Throughout February                           | <b>Picturing Excess:</b> Jan Davidsz de Heem still life paintings. Fitzwilliam Museum |
| Throughout February                           | <b>Snowdrop Trail 2025</b><br>Botanic Gardens                                         |
| <i>https://www.museums.cam.ac.uk/whats-on</i> |                                                                                       |

| CAMBRIDGE ARTS FESTIVAL                              |                                                     |
|------------------------------------------------------|-----------------------------------------------------|
| 10-19 February                                       | Art, crafts, demonstrations, yoga, sculpture, music |
| <i>https://www.love-cambridge.com/arts-festival/</i> |                                                     |

| ADC THEATRE                                 |                                                                             |
|---------------------------------------------|-----------------------------------------------------------------------------|
| 4-8 February                                | <b>Skellig</b> by David Almond. Lady Margaret Players                       |
| 5-8 February                                | Footlights Presents: <b>Wanted</b>                                          |
| 11-15 February                              | Sweet Charity. Cambridge University Musical Theatre Society                 |
| 18–22 February                              | <b>Lady Windermere's Fan</b> by Oscar Wilde (Marlowe Society)               |
| 25 Feb–1 March                              | <b>Cambridge Footlights Spring Revue</b>                                    |
| CORPUS PLAYROOM                             |                                                                             |
| 4–8 February                                | <b>You Got Older</b> by Clare Barron. (Fletcher Players)                    |
| 5–8 February                                | <b>Symptom of Life</b> by Wahida Seisay. (Bread Theatre)                    |
| 11–15 February                              | <b>A Severed Head</b> by Iris Murdoch and J B Priestley. (Fletcher Players) |
| 12–15 February                              | <b>Blackout Songs</b> by Joe White                                          |
| <i>https://www.adctheatre.com/whats-on/</i> |                                                                             |

### MARCH ISSUE OF THE *VILLAGE NEWS*

The deadline for copy for the next issue of the *Great Shelford Village News* is **Friday 14 February** and it should be available on **Friday 28 February**, with subscribed copies delivered shortly thereafter



## HOW TO CONTACT GREAT SHELFORD VILLAGE NEWS

We are pleased to receive articles, letters and notices for community events for consideration. Please send by email (preferably as a Word document), or send paper items, with contact details, to Judith Wilson, 11 Elms Avenue, Great Shelford CB22 5LN. The copy date is usually the second Friday of the month. See the following page for a full list of next year’s dates.

For guidance, please note that an article of around 400 words, without a photo, will fill a full page. Notices for events work best as a half page (half A5) in landscape format and usually in black and white.

### General enquiries and articles for publication:

01223 842553 [gsvneditorial@gmail.com](mailto:gsvneditorial@gmail.com)

### Commercial advertisements

These are for a 12 month period, renewed in January. There is a waiting list.  
[gsvnadverts@gmail.com](mailto:gsvnadverts@gmail.com)

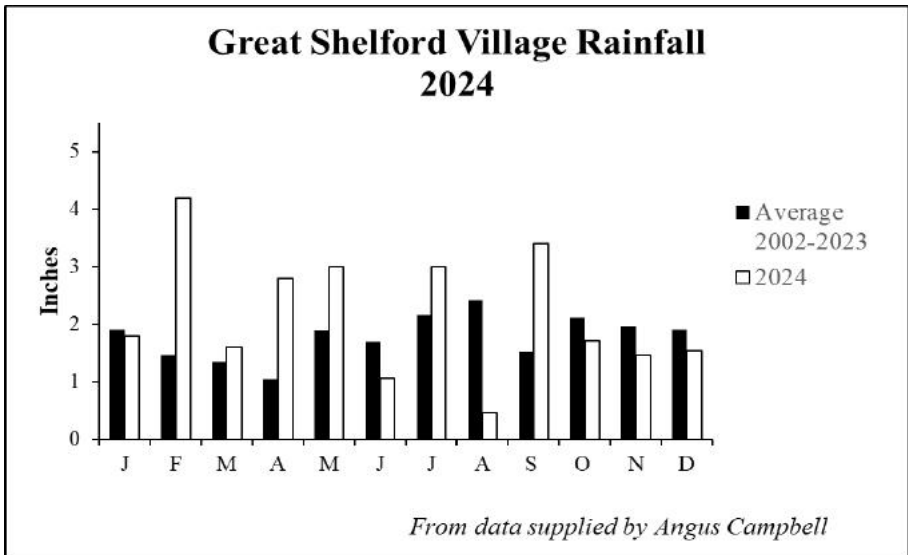
### Subscriptions and online payment details

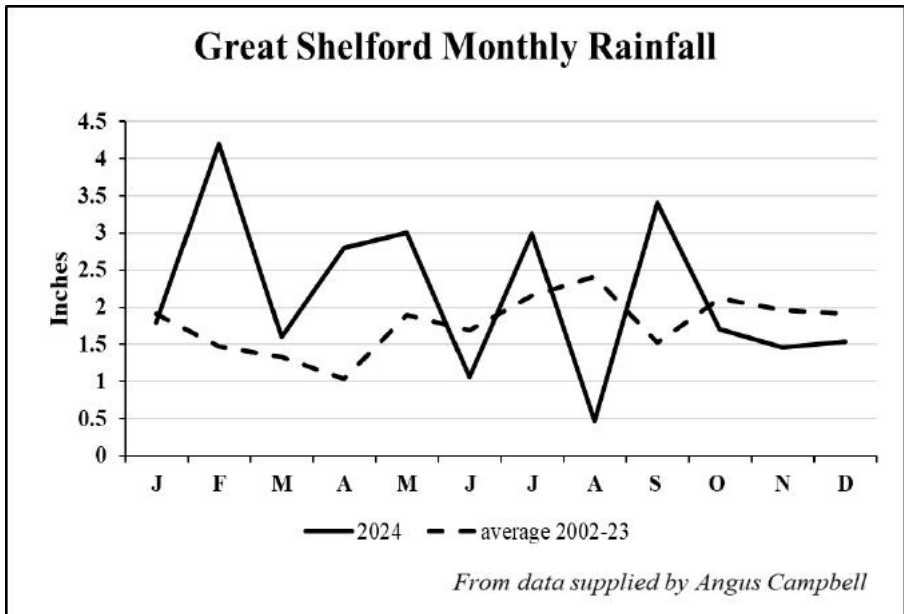
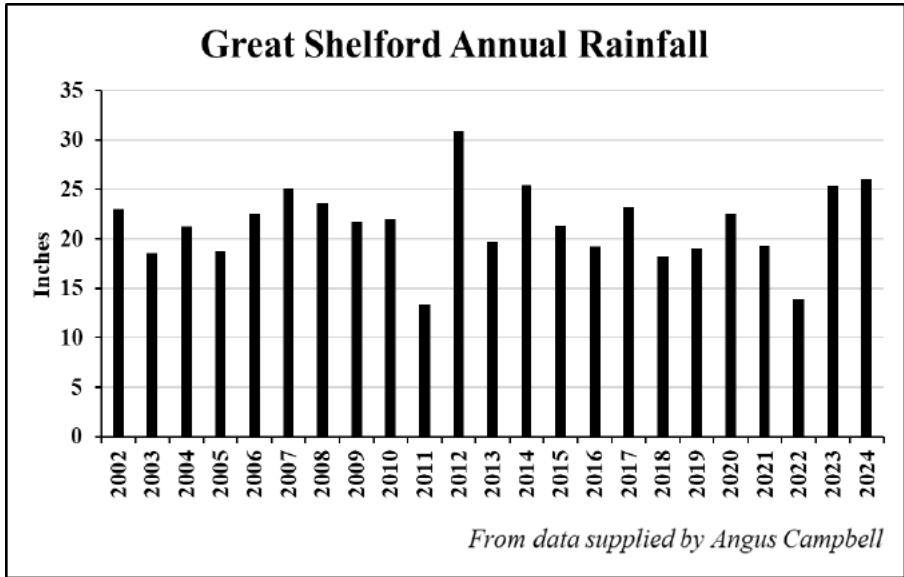
01223 842993 [gsvnsubs@gmail.com](mailto:gsvnsubs@gmail.com)

### Editorial Committee

Duncan Grey, Bridget Hodge, Marjorie Smith, Judith Wilson.

This month’s rainfall charts from Ian Hodge show 2024 follows another relatively high rainfall year in 2023; the rainfall in 2024 was rather variable.





Showing the variability of monthly rainfall through 2024 in comparison with the monthly averages between 2002 and 2023.

**LOCAL ORGANISATIONS**

|                                                         |                                                |                                           |                                       |
|---------------------------------------------------------|------------------------------------------------|-------------------------------------------|---------------------------------------|
| 2G3S Green Group                                        | Peter Woods                                    | mail2G3S@gmail.com                        | 843438                                |
| Badminton (Little Shelford)                             | James Newman                                   | james@jamesnewman.org                     | 07717 394176                          |
| Bowls Club                                              | Gill Taylor                                    | gill.m.taylor@gmail.com                   | 845904                                |
| Brownies, Guides, Rainbows                              | Lisa MacGregor                                 | shelforddistrict@gmail.com                | 843021                                |
| Carpet Bowls                                            | Wendy Seekings                                 | m.seekings039@btinternet.com              | 843416                                |
| Citizens Advice Bureau                                  | Cambridge                                      |                                           | 0808 278 7808                         |
| Country Market                                          | Dorothy Doel                                   | dorothy@woodlandsroad.plus.com            | 843946                                |
| Cricket Club                                            | Peter Ede                                      | peter.ede@ntlworld.com                    | 01223 510662                          |
| Feast – Bunch                                           | Duncan Grey                                    | dsg@post.com                              | 07935 368536                          |
| Football Club                                           | Terry Rider                                    | footybeast63@sky.com                      | 01354 680661                          |
| Free Church                                             | The Administrator                              | administrator@shelfordfreechurch.org.uk   | 842181                                |
| Friends of Shelford Library                             | Daphne Sulston                                 | dsulston@googlemail.com                   | 842248                                |
| Granta Medical Practices                                |                                                | capccg.Covid19.gmp@nhs.net                | 0300 234 5555                         |
| Great Shelford Online                                   | David Martin                                   | www.greatshelfordonline                   | davidm1961@gmail.com 07772197770      |
| Memorial Hall Bookings                                  | Jenny Eldridge                                 | office@greatshelfordparishcouncil.gov.uk  | 01223 616622 Ext 302                  |
| Mobile Warden Scheme                                    | Claire Smith (Warden)                          | saurus1960@gmail.com                      | 07811 676991                          |
|                                                         | Jenny David (Chair)                            | jennykmf@yahoo.co.uk                      | 845367                                |
| Parish Church Bell-ringers                              | Ann Seaman                                     | juliet.a.seaman@outlook.com               | 504682                                |
| Parish Church Community Room                            | Mary Lester                                    | lestermh_uk@yahoo.co.uk                   | 842411                                |
| Parish Church Friends                                   | Bob Doel                                       | bobdoel@woodlandsroad.plus.com            | 843946                                |
| Parish Church Sunday Club                               | Gillian Pett                                   | gillian.pett29@gmail.com                  | 843278                                |
| Parish Churchwardens                                    | Simon White                                    | churchwarden@stmarygreatshelford.org      | 07984 451305                          |
|                                                         | Helen Clarke-Hill                              | churchwarden@stmarygreatshelford.org      | 07761 483203                          |
| Police                                                  | Non-emergency number                           |                                           | 101                                   |
| Rainbow Pre-School                                      | Allison Tomlin                                 |                                           | 07985 216603                          |
| Royal British Legion                                    | Kevin Swann                                    | sawstonpampisford.secretary@rbl.community | 07496517859                           |
| Rugby Club                                              | Secretary                                      | secretary@shelfordrugby.co.uk             | 843357                                |
| Sawston Sports Centre                                   | Sawston Village College                        | info@sawstonsports.com                    | 712555                                |
| Beavers, Cubs and Scouts                                |                                                | contact@sandsscouts.org.uk                |                                       |
| Shelford & Stapleford Strikers                          | Douglas White                                  | douglas.white2@ntlworld.com               | 561753                                |
| Shelford Bridge Club                                    | Tony Cliff                                     | anthony.r.cliff@gmail.com                 | 07532 737794                          |
| Shelford Primary School                                 | Chris Grey (Headteacher)                       | office@shelford.cambs.sch.uk              | 843107                                |
| Shelford Spokes Cycling Club                            | Brian Connellan                                | shelfordspokes@gmail.com                  | 07941 574663                          |
| Shelford Support Group<br>(transport to hospital, etc.) | General enquiries: Gillian Northmore           |                                           | shelfordsupport@googlemail.com 504542 |
|                                                         | John Dibnah                                    | 842054                                    |                                       |
|                                                         | Rosie Cranmer                                  | 513572                                    | Marjorie Smith 564922                 |
| Stapleford Choral Society                               | Adam Pounds                                    | adampounds54@btinternet.com               | 07804 308042                          |
| Tennis Club                                             | Sarah Richards                                 | secretary@gstc.org.uk                     |                                       |
| The Arts Society South Cambs                            | Clem Messenger                                 | gc_messenger@yahoo.co.uk                  |                                       |
| Twinning Association                                    | Penny Pearl                                    | penny.pearl@btinternet.com                | 842483                                |
| U3A (Sawston Branch)                                    | John Gray                                      | johngray6@gmail.com                       | 01223 841784                          |
| Village Charity                                         | Samantha Rigby-Coghlan (Clerk to the Trustees) | clerk@gsvc.org.uk                         | 07979 184273                          |
| WI                                                      | Vanda Butler (Secretary)                       | vanda.butler@googlemail.com               | 561053                                |
| Youth Initiative                                        | Zac Britton                                    | zac.britton@ssyi.club                     | 07599 024210                          |

### **A Portrait of Rebecca Clarke**

**Sunday 9 February | 3:00pm**

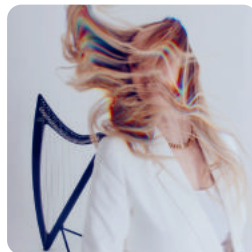
A programme dedicated to the music of one of the most individual and inventive English composers of the 20th century. Performed by the acclaimed Pixels Ensemble, this rich, intriguing afternoon of chamber music and song showcases Clarke's versatility and depth of expression.



### **Rachel Newton, harp & vocals**

**Friday 14 February | 7:45pm**

Described as '*one of the standout musicians of her generation*' (BBC Radio 2), Rachel Newton draws on old poems and ballads to create a rich, haunting and compelling sound.



### **William Bracken, piano**

**Saturday 15 February | 7:45pm**

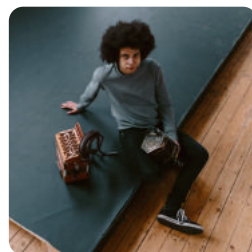
The rising star pianist returns to the Granary with a knockout programme including music by Scriabin, Beethoven, Messiaen, Ravel and Haydn.



### **Empirical Quartet**

**Saturday 22 February | 7:45pm**

Returning to the Granary following their sold-out concert in 2023, the multi award-winning Empirical Quartet are renowned for their unbridled creativity, dazzling improvisatory melodies, energy and virtuosity.



### **Cohen Braithwaite-Kilcoyne**

**Sunday 23 February | 3:00pm**

Described as '*captivating, bold and striking*', Cohen Braithwaite-Kilcoyne is at the forefront of his generation of English folk musicians as both a powerful and commanding singer and a masterful player of the Anglo concertina and melodeon.