

# Great Shelford VILLAGE NEWS

---

EST 1999

NOVEMBER 2024

PRICE: 40p

---

## *Remembrance Day*



Anglesey Abbey Gardens

Photo: Duncan Grey

*Looking After Hedgehogs*

*See Van Gogh in Sawston!*

**CONTENTS**

Parish Council Minutes	1	Twinning Association Wine Tasting	37
Parish Council Meetings	4	Cambridge Flower Club	37
Planning Applications	4	Shelford School News	39
Parish Council News	7	Cambridge Cake Creators	40
South Cambridgeshire District Council	10	Old News	40
Pippa Heylings MP	11	Football Club	42
Free Church	14	Tennis Club	43
Royal British Legion	17	Little Shelford Film Evening	44
Parish Church	19	Little Shelford Local History Society	44
Neighbourhood Plan Update	24	Sawston Cinema – Van Gogh	46
Diary	26	Beginners Ballroom	48
Granta Medical	27	Save the date – Tea Party	48
Sawston Fun Run Beneficiaries	28	What’s On in November	49
Reader’s letter – Hedgehog Help	28	Rainfall	51
Library	31	How to contact the <i>Village News</i>	52
2G3S	33	December Issue of the <i>Village News</i>	52
Country Market	34	Local Organisations	
WI	36		

**GREAT SHELFORD PARISH COUNCIL**

**CHAIR** Malcolm Watson      **DEPUTY CHAIRS** Gregory Price, John Stanton

**CHAIRS OF SUB-COMMITTEES**

**Planning** Gregory Price      **Highways** Barrie Ashurst

**Building & Grounds** Malcolm Watson      **Cemetery & Allotments** Angela Niblett

**MEMBERS**

Paula Arnold    Justin Curtis    Roberto Gherseni    Howard Kettel    Angela Mutty  
 Peter Brown    Lyn Disley    Barbara Kettel    Timothy Mann

**CLERK** Nicola Webster    *clerk@greatshelfordparishcouncil.gov.uk*    01223616622

**To email Parish Councillors, use:** *firstname.surname@greatshelfordparishcouncil.gov.uk*

**DISTRICT COUNCILLORS** Peter Fane    07802 256861    William Jackson-Wood    07873 731597

**COUNTY COUNCILLORS** Brian Milnes    07971 886113    Maria King    07764 609061

**GREAT SHELFORD PARISH COUNCIL***greatshelfordparishcouncil.gov.uk***SUMMARY FROM THE UNADOPTED MINUTES OF THE MEETING ON 18 SEPTEMBER 2024****CAMBRIDGE BIOMEDICAL CAMPUS (CBC) PRESENTATION**

Representatives of CBC Ltd gave a presentation on their vision and answered questions from councillors. Councillors asked whether CBC could compulsorily purchase the entire campus, whether there was any overview of all of the various campuses as a collective, traffic and transport solutions, their view of the historic 'Cambridge South' development, the size of Addenbrooke's hospital in relation to the population it serves and whether the non-members of CBC Ltd on the campus could negatively impact their vision.

**REPORTS FROM COUNTY AND DISTRICT COUNCIL MEMBERS**

District Cllr Fane reported on the recent planning decision regarding 2000 & 3000 Discovery Drive, which have been approved. He reported that on his recent visit Matthew Pennycook, Minister of State for Housing and Planning had stated that central government wants to have a 'reset' with local leaders, that sustainable transport is a key obstacle and that Peter Freeman, Chair of the Cambridge Delivery Group, will be looking into this. Cambridge South-East Transport (CSET) has been given the go ahead, but the Greater Cambridge Partnership (GCP) does not have the funding for this project and so the current expectation is that this project will be transferred to Peter Freeman. Local leaders will be included in the decision making board for this development.

Cllr Stanton reported that Peter Freeman had said he would be looking for a collaborative approach to development.

Cllr Ashurst asked about the vote for the 4-day week, Cllr Fane stated that this matter had been deferred to November, when the Best Value notice expires.

Cllr Disley asked about the South Cambridgeshire District Council (SCDC) environmental monitoring programme.

Cllr Gherseni asked what the Council's position is regarding affordable homes and Cllr Fane advised that the focus is on social housing trusts and the requirement for 40% of new developments to be affordable housing, including increasing the number of rural exception sites which includes 60% affordable homes.

## **REPORTS FROM COMMITTEES AND WORKING GROUPS**

Reports were received from the Neighbourhood Plan project and the Traffic and Transport Infrastructure working group (TTIWG).

It was agreed to authorise the replacement of broken glass in the bus shelter on Cambridge Road at a cost of £390.

The draft responses to the Cambridgeshire and Peterborough Combined Authority Bus Franchising Consultation proposed by TTIWG was discussed. It was agreed that this will be published on the Parish Council website and parishioners will be encouraged to comment and respond. A report and final draft response will be presented to the October council meeting for approval.

The Cambridgeshire County Council consultation regarding 20mph speed limits in Cambridge was discussed. Cllr Brown will draft a response based on the response from TTIWG that ‘Where there are safety considerations and sensitive areas, such as schools and accident blackspots, we support 20mph, but if this is the only response to a complex situation then blanket implementation of 20mph limits is not appropriate.’

## **COUNCIL ADMINISTRATION MATTERS**

Pavilion: It was agreed that a dilapidation survey, a roof inspection, a drainage investigation and replacement of a water pipe would be carried out.

War Memorial Repairs: The Parish Council would prefer to appoint a loss adjustor/assessor via the insurance. If this is not possible, the Council prefer the quote from Ivett & Reed.

Other matters: Training in Play Equipment Inspection for the Clerk, renewal of the National Allotment Society and adoption of the new Health and Safety Policy and Handbook were approved. It was noted that the Council is responsible for funding eye tests for display screen users and that contribution of up to £250 will be made towards occupational glasses.

## **COMMUNITY MATTERS**

All councillors were requested to help on the Fun Day on 29 September.

The purchase of goals and nets for the river pitch and new nets for the main pitch at a cost of £3,899 and £80 respectively was approved, with the caveat that nets must be stored between games and the goals be secured with a parish council padlock with a single key provided.

# JO ALEXANDER

Meticulously designed and ethically sourced  
furniture for your garden

Visit us at Childerley Estates

[www.joalexander.co.uk](http://www.joalexander.co.uk)



David Levy  
MSSCh MBChA

**Chiropody  
and  
Podiatry**

**Home Visiting  
Service**

Mobile: 07966 136972

Home: 01223 834634

01223 459239

**green|weigh**  
minimal wasteshop

*Eco-friendly, ethically  
sourced food refills &  
other products*

**60 High Street  
Sawston CB22 3BG**

Email:  
[hello@greenweighshop.co.uk](mailto:hello@greenweighshop.co.uk)

Facebook/Instagram:  
[@greenweighshop](https://www.facebook.com/greenweighshop)

Website:  
[www.greenweighshop.co.uk](http://www.greenweighshop.co.uk)

Tues-Fri: 9am to 5pm  
Sat: 9am to 4pm

**sawstoncarpet  
andflooringltd**

Carpets - Sisal - Vinyl  
Wood - Laminate  
Karndean - Amtico - Moduleo

**Mon-Fri: 9am-5pm  
Sat: 9am-4pm**

Unit 34, Eastern Counties Leather Site,  
London Road, Pampisford CB22 3EE  
Tel 01223 837005

[sawstoncarpetsandflooring@gmail.com](mailto:sawstoncarpetsandflooring@gmail.com)  
[www.sawstoncarpetsandflooring.com](http://www.sawstoncarpetsandflooring.com)

**NICHOLAS CLIFFE & CO  
CHARTERED ACCOUNTANTS**

*Business Advisers for South Cambridgeshire*

**Accounts, Audit, VAT & Tax Advice**

**WE WANT TO HELP YOUR BUSINESS GROW**

**Realistic Fees**

**We offer a free initial meeting and business 'health check'.**

Mill House, Mill Court, Great Shelford

Tel: 01223 471576

[www.nicholas-cliffe.co.uk](http://www.nicholas-cliffe.co.uk)

## FINANCE MATTERS

The request from Great Shelford Football Club to hold a memorial trophy match for two weeks in August 2025 was discussed. It was decided to defer this to the Building and Grounds Committee meeting on 23 October, to which both the cricket and football clubs will be invited.

The Council agreed to place an accessible toilet on the recreation ground for a one month trial, to include half term. A report will be presented to the November meeting.

The Christmas lights event will be held on Sunday 1 December. All councillors are requested to help.

### PARISH COUNCIL & COMMITTEE MEETINGS IN NOVEMBER

Highways	6 November	7.30pm Pavilion
Planning Committee	11 November	7.30pm Pavilion
Full Council Meeting	20 November	7.00pm Pavilion
Planning Committee	25 November	7.30pm Pavilion

Meetings may be adjourned for up to 15 minutes when the public can ask questions and put forward points of view related to business on the agenda or for items they wish to raise for future agendas. No decisions can be made in this section of the meeting.

## PLANNING APPLICATIONS

### PARISH COUNCIL COMMENTS (09.09.2024, 18.09.2024)

24/02937/HFUL	3 Cabbage Moor	Roof extension incorporating side dormer, raising of ridge height and solar panels to western roof slope. Replacement canopy to front elevation and associated alterations.
Application supported.		

24/02938/HFUL	259 Hinton Way	Single storey orangery extension to rear.
No comments.		

24/03261/HFUL	8A Buristead Road	Demolition of existing conservatory and erection of single storey front/side extensions and bay window, updates to roof layout including installation of photovoltaic panels.
No recommendations, but a strict construction traffic management plan should be implemented.		

24/03309/FUL	Land r/o 45 Tunwells Lane	Erection of 1–2 bedroom dwelling & associated (new) vehicular access.
Refusal recommended as it is overdevelopment of the site.		

The committee considered the correspondence from Greater Cambridge Planning regarding the preparation of a Cambridge Biomedical Campus Supplementary Planning Document. They agreed to request that the following items are included in the document:

- Protection of the green belt
- Water pressures and water conservation
- Prevention of degradation of biodiversity
- Reconsideration of CSET
- Traffic & Transport – increase in traffic flows on A1301, automatic number plate recognition (ANPR) systems not being effective
- Lack of integrated transport planning, e.g. CSET and Cambridge South to provide alternatives to private car transport whilst increasing provision for parking
- Green open space within the development
- Provision for residential properties within the campus.

Full copies of the agendas and minutes of the Parish Council and Committee meetings can be viewed on the Parish Council website:  
[greatsheldfordparishcouncil.gov.uk/minutes-agendas](http://greatsheldfordparishcouncil.gov.uk/minutes-agendas)

**CHIMNEY SWEEP**

07919 888990

Local, professional &amp; insured

Certificates issued

Advice given

Problems solved

edcleansweep@gmail.com

www.edcleansweep.co.uk

Bird guards fitted

Chimney repairs

**Shelford Massage**

After over 30 years as a Physiotherapist  
(Shelford Physio)

I have decided to move into massage  
therapy

I can offer a relaxing or stronger massage  
depending on what you require

Please call Stephanie Hatter 07789635181

email shelfordmassage@gmail.com

**SAM  
MCGUINNESS**

**CURTAIN MAKING  
ROMAN BLINDS  
SOFA COVERS**

Call or email  
for a free quotation

07803 737518

samcampbell39@hotmail.com

Great  
Value

**KASH STORES**

Local  
Services

A great deal more from your local store!

General Groceries • Fresh Produce • Confectionery  
Instore Bakery • Off Licence • Photocopying  
Newspapers • Magazines • Stationery • Dry Cleaning  
Helium Balloons • Party Goods • Passport Photos

Full Post Office counter facilities

33-35 Hinton Way, Great Shelford

Tel: 01223 843307

Shop Opening

Mon-Sat

07:00 - 20:00

Sunday & Bank Holiday:

08:00 - 18:00



Post Office Opening

Mon-Sat

09:00 - 19:00

Sunday

10:00 - 16:00

**TAYABALI & WHITE**

ACCOUNTANCY | TAX | CONSULTING

5 High Green, Great Shelford, Cambridge CB22 5EG

Telephone: 01223 843324

Email: enquiries@tayabali-white.co.uk

**Daniel Anderson  
Friendly Gardening  
Service**

No job too big  
No job too small  
(Inc snow clearing)

Affordable rates

**07852 971 696**

andersongardening

@outlook.com





## NOVEMBER NEWS

### Fun Day

What a fantastic Fun Day we had! A huge thank you to everyone who joined us for an unforgettable day of laughter, community and fun. From the thrilling duck race to the bouncing joy of the bouncy castles, there was something for everyone.

Thanks to your support, Great Shelford Parish Council (GSPC) will be donating over £750 to the Arthur Rank Hospice and the Cambridge Cancer Centre. A massive shout out to the amazing volunteers for making this event possible.



### Christmas Lights Switch On

This event will be on Sunday 1 December, from 2–5pm. Get ready for festive fun with Santa in his grotto, exciting fairground rides, delicious churros, mulled wine, hot dogs and so much more... Our wonderful community groups will be hosting games and activities, making it a perfect day for all ages. Mark your calendars and spread the word – let us kick off the holiday season together!

### Fireworks

GSPC is proud to support the annual fireworks event organised by Shelford Rugby Club. Join us on Saturday, 2 November, Doors open at 5pm, with the spectacular fireworks show at 7pm. Free parking at Scotsdales. Indulge in delicious food and drinks from the stalls. A perfect evening for family and friends. We hope to see you all there for a night of fun and celebration!

**GREAT SHELFORD PARISH  
FIREWORKS NIGHT!**  
**AT SHELFORD RUGBY CLUB**

7pm start  
doors open 5pm

**SATURDAY  
2ND NOVEMBER**

**FREE ENTRY**

food & drink stalls and vendors.  
Free parking at Scotsdales.

sponsored by:  
SCOTSDALES SHELFORD RUGBY CLUB  
GREAT SHELFORD PARISH COUNCIL

## **Christmas Carols**

GSPC is thrilled to support the Christmas Carols organised by the Free Church in the Memorial Hall car park on Tuesday 17 December at 6.30pm. Join us for a delightful evening featuring a live brass band and warming mulled wine.

## **Remembrance Sunday**

Work is ongoing to repair the war memorial, and while it won't be complete by Remembrance Sunday, the service will still take place as planned. This year, we will close the High Street from the Free Church to the War Memorial to allow for a parade to the Memorial for the act of remembrance. Join us for this occasion and enjoy refreshments served afterwards at the memorial.



## **Local Highways Improvements (LHI)**

Exciting News! Our LHI bid for funding to improve Church Street has been successful. The next step is entering the detailed design phase, followed by public consultation to gather your input. Stay tuned for updates on how you can get involved and share your ideas.

## **Bus Shelter**

A new bus shelter has been installed on Cambridge Road. This will provide a more comfortable and welcoming space for all our bus users.

## **Budget Setting**

Next month, the council will begin setting its budget for the 2025/26 financial year. If you have any projects or ideas you'd like us to consider, please contact the Clerk.

## **Sawston Greenway**

At the October meeting, the Council reviewed the final draft plans for the Sawston Greenway—a project led by the Greater Cambridge Partnership (GCP) aimed at creating a safer cycle route from Sawston to Cambridge. The GCP will be holding a public engagement session in late October, with plans to start work in March 2025.

For more information see our website: [www.greatshelfordparishcouncil.gov.uk](http://www.greatshelfordparishcouncil.gov.uk)

Don't forget to get in touch with us should you have any relevant concerns. Our telephone number is 01223 61 66 22 and Nicola will be available to help during office hours (please leave a message outside of these times or email). Councillors also have email addresses which can be found on the website. If you do email a Councillor, we ask that you copy in Nicola.

*Malcolm Watson, Chairman*



**Shelford**  
**Tree Service Ltd**  
 Professional Tree Surgeons covering  
 Cambridgeshire and Hertfordshire  
 Fully Qualified & Insured  
 01763 208361 / 07743406569  
 shelfordtreeservice.co.uk



**Rothwell's**  
 Carpet Cleaning

**Carpet Cleaning &  
 Stone Floor, Upholstery, Rugs**

*A few points that make us stand out:*  
 Rothwell's has been in business since 1993.  
 We're an honest local family firm.  
 Our large truck-mounted machines mean  
 more cleaning & drying power  
 for the best results possible.  
 Members of both the NCCA and TACCA.  
 We will move the furniture.  
 100% satisfaction or it's FREE.  
 Call Oliver and Max Campbell  
 for expert help today.  
 01223 832 928  
 www.Rothwells.biz

**LAY**  
**ELECTRICAL**  
**Sales and**  
**Repairs**

*Washing  
 Machines,  
 Vacuum  
 Cleaners,  
 TV, Video,  
 etc.*



66 High Street  
 Great Shelford  
 01223 842488

**The Great Shelford  
 Village Charity**

---

**Grants**  
 We provide small grants in support of local  
 people and good causes

**Almshouses**  
 We provide affordable community housing for  
 local people - families, couples and individuals -  
 in housing need

**Allotments**  
 Available to rent for a nominal annual fee

We welcome donations supporting our work; see website

---



www.gsvc.org.uk

clerk@gsvc.org.uk  
 07979 184273



facebook

## **SOUTH CAMBRIDGESHIRE DISTRICT COUNCIL (SCDC)**

### **IS CAMBRIDGE 2050 STILL A THING?**

The Planning and Housing Minister Matthew Pennycook MP met with local leaders on 12 September to ‘to reset the conversation on how we deliver ambitious and high quality sustainable growth in the area’. He says ‘the recent focus on Cambridge and its untapped economic potential are entirely warranted... The economic growth of Cambridge has been a phenomenal success and we should seek to maximise the potential contribution that Greater Cambridge could make to the UK economy.’

The new government says sustained economic growth is the only route to improving prosperity and that decisive reform to our planning system is needed. The consultation on changes to the National Planning Policy Framework (NPPF) has now ended and the new version should be launched early in 2025. A key ambition is to build 1.5 million new homes in this Parliament. The plan is to deliver affordable, well-designed homes, with new ‘golden rules’ for land released in the Green Belt prioritising the types of affordable homes which are needed.

Local planning authorities are expected to make rapid progress in bringing forward an ambitious local plan for housebuilding and economic growth. The Greater Cambridge joint local plan has been held back by uncertainty over the previous government’s Cambridge 2050 proposals, but will now be resumed. The intention is to submit the final version to government by the end of 2026.

It is likely that parts of Greater Cambridge will be included as an urban extension. The proposed development corporation will now go ahead. The Cambridge Delivery Group, a putative development corporation led by Peter Freeman, has been retained and progress is being resumed. Uncertainty remains as to the size of the area to be designated for development.

Within any urban extension, responsibility for development, including transport planning (likely to include any CSET scheme), will be handed to a development corporation (devco). Local authority leaders may have greater influence than was the case in Michael Gove’s earlier proposals. The devco will be expected to make use of land value capture, ie compulsory purchase of land at below development land value, to fund much of the infrastructure development.

Cambridge 2050 is very much alive and kicking, with the same uncertainties over its size as before the election.

*Peter Fane, District Councillor*

## **PIPPA HEYLINGS MP**

The following item features extracts from the newsletters sent by our MP. To sign up to receive the full newsletters yourself please go to the website of the South Cambridgeshire Liberal Democrats: <https://www.sclibdems.org.uk/news>

### **CAMPAIGN ON HEALTH AND SOCIAL CARE:**

#### **Cancer and Children's Hospitals**

Together with all the regional MPs for the East of England, I had a full briefing and update from the CEO of Cambridge University Hospitals about the uncertainty facing the Cambridge Cancer Hospital. The Cancer Hospital is one of the hospitals within the new Government's review process, a result of the failure of the Conservative Government to put aside enough money for their promised New Hospitals Programme.

I have requested a meeting with Wes Streeting, Secretary of State for Health, to urge him to give confirmation for the cancer hospital, as it has been included in the new Government's review of the new hospital programme.

#### **Save Our Pharmacies!**

A huge thanks to the wonderful team at Linton Village Pharmacy for explaining to me the challenges faced by our community pharmacies. The previous Government kept asking pharmacies to do more - including under their Pharmacy First scheme - but without providing the funding needed for additional services. With the rising cost of critical drugs and staff shortages, pharmacies are buckling under the pressure.

### **CHILDREN'S HEALTH AND WELLBEING:**

#### **Local Charity Internet Watch Foundation Protecting Children Online**

It was an honour to be able to meet the hard-working analysts at the Internet Watch Foundation (IWF) who have the incredibly challenging task of viewing child sexual abuse imagery day in day out. Last year the IWF found and removed more than 275,000 webpages containing child sexual abuse imagery, more than ever previously recorded.

As a new member of the All Party Parliamentary Groups on Children's Online Safety and on Youth Affairs, I am delighted to become a champion for the IWF and to be able to speak on the charity's behalf in Parliament.

### **CAMPAIGN ON CLIMATE & ENVIRONMENT**

#### **Appointment as Spokesperson on Energy Security and Net Zero**

I will use this position to take green issues to the heart of Westminster, including local concerns about insulating homes, meeting our climate targets

and caring for our environment - issues that matter greatly to the residents of South Cambridgeshire.

### **Students Put Motions to Council's Climate and Environment Committee**

It was fantastic to hear students from eco clubs at Comberton and Sawston Village Colleges and other schools presented questions formally to the South Cambridgeshire District Council (SCDC) Climate and Environment Committee about action on air quality, water scarcity, circular economies, food waste and biodiversity.

### **Protecting the Source of the River Shep at RSBP Fowlmere**

Royal Society for the Protection of Birds (RSPB) Fowlmere Nature Reserve is an oasis for wildlife set in farmland in South Cambridgeshire. It is the source of the River Shep, one of our very important chalk streams and one of the UK's rarest habitats. There are twin threats to our chalk streams: raw sewage dumping and over-abstraction by the water companies and I will continue calling on the Government and relevant authorities to make sure they are doing more to prevent this

### **EAST WEST RAIL: SPEAKING UP FOR LOCAL RESIDENTS**

I met with the CEO of East West Rail (EWR) today and shared the deep concerns that local residents have raised with me regarding the extremely poor engagement and lack of openness in the process to date; the negative impact on local communities and connectivity such as between the villages of Harston and Newton; the disproportionate environmental impact; and the need for electrification of such a route in the 21st century. I also raised the concerns of residents in Cherry Hinton who have written to me and visited me regarding the letters received by them.

### **CONSTITUENCY SURGERIES**

I have now held surgeries in Cherry Hinton, Melbourn and online, and there will soon be a calendar of surgeries. If you would like an appointment, please do email me at [pippa.heytings.mp@parliament.uk](mailto:pippa.heytings.mp@parliament.uk)

### **HILLS ROAD SIXTH FORM COLLEGE FUNDING ISSUES**

Having met representatives from the National Association of Colleges at the Liberal Democrats conference last month, it was very important to visit one of our top providers of post-16 education. I heard from Jo Trump, Principal of Hills Road Sixth College (HRSFC), about the serious funding challenges presented by the fact that sixth form colleges were not included in the Government's pay deal for teachers.

**Managing Your  
Property Renovations**

**Rebecca Orde** LTD

I help clients in Cambridge and surrounding areas renovate their homes. I will guide you through the whole process from concept to completion, taking away all the stress that comes with undertaking a building project.



☎ 01223 782125 🌐 www.rebeccaorde.com ✉ info@rebeccaorde.com

**SIMON  
SPARROW**  
**CARPENTER  
AND JOINER**

22 Woollards Lane  
Great Shelford  
Cambridge CB22 5LZ  
Tel: 01223 842380



**D Hatter  
The Gas Specialist**



Carbon Monoxide Kills  
75% of last year's poisonings  
were due to lack of servicing!  
.....

D Hatter, specialist in servicing,  
repairs and installation of  
DOMESTIC gas appliances  
including boilers, fires  
and cookers.

.....  
Improve efficiency, save fuel,  
give your central heating  
system a new lease of life,  
have it POWER FLUSHED.

t: 01223 844866  
m: 07747 444 435  
e: davidhatter1@aol.com  
w: thegasspecialistltd.co.uk



**angli-EAR**  
Hearing & Tinnitus Solutions

**Hearing services**

Our services include:

- Diagnostic testing
- Hearing aids
- Tinnitus treatment
- Earwax removal
- Cochlear implants
- Paediatric care
- Balance & Vestibular



BOOK YOUR  
**FREE**  
EAR HEALTH  
CHECK TODAY



Audiology House, 15 Woollards Lane,  
Great Shelford, Cambridge CB22 5LZ

01223 661 399 • www.anglihearhearing.co.uk



## REMEMBERING

Under my bed I have a big box of photographs. There are pictures of my children growing up, pictures of holidays, pictures of family and friends over many years, pictures that probably need to be sorted and put into albums because they hold many memories of the past, which don't deserve to be hidden under a bed.

Nowadays most of us don't have physical photographs, but digital pictures that are stored on a phone or somewhere 'in a cloud'. Perhaps 'memories' are sent to you by Facebook or Google, to remind you of something you were doing this time last year, or three years ago, or ten years ago! You might look at those pictures and remember that particular day, or remark on how much things have changed, how much the children have grown, or simply wonder at how time has gone so quickly!

November is a month for remembering. Armistice (or Remembrance) Day is a day set aside to remember those of our armed forces who lost their lives in two world wars and also in more recent conflicts. We remember their sacrifice as they served their country, considering them as more than names and numbers, but as men and women, husbands and wives, fathers and mothers, sons and daughters. Remembering that every one of these was loved, and in their passing are grieved for and missed.

As we consider their sacrifice, we can also remember the sacrifice of Jesus as he laid down his life for each one of us now and throughout history, for it is in Him alone we can have hope for a better future.

Jesus said,

*'Peace, I leave with you; my peace I give you. I do not give it as the world gives. Do not let your hearts be troubled and do not be afraid.'* John 14:27

So, as we remember those who have gone before, let us also think of those living in war zones today. Let us consider those who are called up to fight and also those whose lives are lost or damaged by the conflicts raging around them. We may not understand why such violence persists but we can continue to remember them in our thoughts and prayers and ask him who is the Prince of Peace to bring his peace to every land and every heart.

And may you too, know his peace with you in these times.

God Bless.

*Diana Parr, Pastor*



## FREE CHURCH

### SUNDAY SERVICES

**Morning Services at 10:30am.** Everyone welcome.

**Joint Remembrance Sunday Service with St Mary's Church** to be held in Great Shelford Free Church: Sunday 10 November at 9.30am:

Annual event – please note earlier start time. After the service, we will walk to the village Memorial for a time of reflection and a minute's silence at 11am.

**Café Church on Sunday 17 November at 10.30am:** Informal service, seated around tables with refreshments served.

### WEEKDAY EVENTS

**Community Café** every Monday: 10am–12 noon. Come and join us for tea/coffee and homemade cake.

**Little Steps Toddler Group** every Wednesday: 10–11.30am. This group is for toddlers up to the age of three with their parent or carer. To book a place, please email [administrator@shelfordfreechurch.org.uk](mailto:administrator@shelfordfreechurch.org.uk)

**Tiny Toes Baby Group** every Wednesday afternoon: 1.30–3pm. This group is for babies under one year old with their parent or carer. To book a place, please email [administrator@shelfordfreechurch.org.uk](mailto:administrator@shelfordfreechurch.org.uk)

### SPECIAL EVENTS

**Operation Christmas Child Shoebox**

**Filling Party and Cake Sale at Great Shelford Free Church: Saturday 16 November: 10am–1pm:** Come join us for this fun event where empty shoe boxes are available with lots of items arranged on tables so that you can fill a box (or more!) with contents that you choose. Feel free to bring along boxes that you have already filled. There will be a cake sale too!

**Open Space: Sunday 24 November: 3– 4.15pm:** Outdoor church for families – a joint event with St Mary's Church which will be held on the land behind Cara Coffee Shop. A space to explore faith together. This month, we will be exploring Christ the King.

**Evening of Praise and Worship at Great Shelford Free Church: Friday 29 November: 6.30–7.30pm:** We would love to welcome you to an evening of praise, worship and reflection. Refreshments served afterwards.



**FOXCOTTE**  
TIMBER / BUILDING / DIY CENTRE

**Timber**

Paving & fencing

Building materials

**Aggregates**

Decorating

Ironmongery

Hand tools

Garden machinery

Sales & services

Tree surgery

Foxcotte, Comberton Road,

Barton, Cambridge

CB23 7BA

Mon—Fri 7.30am—5pm

Sat 8am—1pm

[www.foxcottecambridge.com](http://www.foxcottecambridge.com)

01223 263 702

BECOME A  
**TUTOR**

Are you a Subject Expert, Teacher, or Tutor wanting to make a difference in students' lives?

Then we have the opportunity for you!

Tutor Doctor Cambridge is looking for Primary and Secondary English, Maths, and Science tutors to work in homes and schools in the Cambridge area.



Apply today at:

[www.tutor-doctor.co.uk/cambridge-norwich-recruitment](http://www.tutor-doctor.co.uk/cambridge-norwich-recruitment)

01223 430434

THE TUTORS' ASSOCIATION



**tutor doctor**

How learning hits home.



ASSESS



MATCH



TUTOR



SUPPORT

**CAMBRIDGE**  
**EV POINTS**

• Home • Workplace • Public •

01223 430040

[www.cambridge-evpoints.co.uk](http://www.cambridge-evpoints.co.uk)

Contact our experienced team for all your EV charging needs.



CAMBRIDGE  
ELECTRICAL  
ESTABLISHED 1988



After a buyer who loves  
what you've done?

Best talk to Bidwells

  
**BIDWELLS**

PROUD SPONSORS OF SHELFORD RUGBY CLUB

**01223 624 573**  
[talktobidwells.co.uk](http://talktobidwells.co.uk)

## ROYAL BRITISH LEGION (RBL) SAWSTON & DISTRICT BRANCH



At 11am on the morning of 11 November 1918, the guns fell silent. At long last an Armistice was signed between the warring factions of the Great War. Peace at last. The men came home to their families who had been waiting four long years for their return. The veterans from this war, some very seriously wounded, came back to a country that needed them to fight again. This time to rebuild a future for themselves, their families and the nation.

They were given a pittance of a war pension by the Government, but in all cases, this proved to be inadequate. At that time, four charities set up by veterans themselves were working flat out to give as much assistance to these men and their families as they could. Field Marshall Haig managed to get these charities together in 1921, and the Royal British Legion came into being. They took control of Remembrance, and also in 1921 began selling poppies to assist veterans and their families with rehabilitation, financial support and training in trades needed to rebuild the country. This work by The Royal British Legion continues today.

At this time of year our thoughts turn to those men and women from all corners of the world, to remember what they did. They went into the unknown, proud to 'do their bit' but unsure whether they would ever see their loved ones again. Most didn't come back. We must never forget what they did; we must never forget the support their families gave them; we must never forget the debt we owe them.

*They shall not grow old*

*As we that are left grow old.*

*Age shall not weary them, nor the years condemn.*

*At the going down of the sun, and in the morning,*

*We will remember them.*

**For The Fallen, Laurence Binyon 1914**

### DIARY FOR NOVEMBER

#### Wednesday 20

Branch meeting at the Chapelfield Way Community Centre, at 7pm.

#### Saturday 23

RBL Breakfast Club at the Plough, Duxford, food served at 9.30am.

Both these events are open to all. Membership is not required.

*John McCarthy, Chairman, Sawston & District Branch*

# BEAUTY BY SARAH

Haslingfield

GUINOT  
INSTITUT • PARIS

2 Badcock Road  
Haslingfield  
CB23 1LF

07706 925 559



@haslingfieldbeauty



sa18jpo@hotmail.com

## DAVID FOX CARPENTRY

*Purpose-made  
joinery and fitted  
furniture*

Unit 4 Granta Terrace  
Stapleford  
Cambridge

01223 845143

### FOOT PROBLEMS?

**Celia Kenney**

(HCPC Registered Podiatrist)

**Call 07939 227195**

(For home appointments)

Treatments cover:

Nail cutting and other nail  
conditions

Corn and callus  
removal/reduction

Fungal infections and  
athletes foot

Verrucae/warts

The Beechwood Practice  
Cambridge CB2 1NT  
Call: 01223 315541

*Bespoke  
Curtains  
& Blinds*

01223 836498

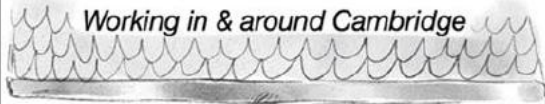


suecrowcurtains.com

## CAMBRIDGE

WINDOW CLEANING

*Working in & around Cambridge*



- Exterior & Interior Windows
- Conservatory Roofs
- Gutter Cleaning
- Pressure Cleaning,  
Paving, Patios & Drives
- Tile Roof Cleaning &  
Moss Removal



Tel. 07942780601

Email. info@cambridgewindowcleaning.com



## GREAT SHELFORD PARISH CHURCH

### Saint Mary the Virgin

#### Julie's Jottings:

'Peace is not made by force. It comes by understanding.' This was something said to me recently, not in the context of the different wars going on in the world, though this would be relevant to those wars. Rather, the context was in response to the resolution of an argument, which was only achieved when the people involved really listened to each other.

November is a time when we think about what peace means as we remember the sacrifices people made during World Wars, to bring peace to our nation. It makes us thankful for our freedom and thoughtful about what we value in our national life. We may find ourselves questioning what humanity has learnt about peace?

A child said, 'I know how to stop people arguing.' I said, 'Great, tell me how.' He said, 'Get everyone to play sleeping lions. When they all shut their eyes together, everything is quiet.'

At St Mary's we meet regularly on Monday and Thursday mornings for prayer. This month we will be praying for peace in our world and community. Prayer is often a time when we close our eyes, but unlike the sleeping lions game, the aim of prayer is not to make us quiet, but more attentive and alert to what our role in positive change and peace bringing might be. Do join us at 8.30am in the church on Mondays and Thursdays to pray for peace in our world.

*Rev Julie Norris*

**See the St Mary the Virgin Great Shelford** website for up-to-date information about our services and activities. Please visit us at <https://www.stmarysgreatshelford.org>

**Monday Morning Prayers at 8.30am.** We meet in the Chancel. This is a short service, approximately 30 mins, though we often talk after the service for a few minutes longer.

**Thursday Morning Prayers at 8.30am.** We will meet in the Chancel for about half an hour.

**Sundays at 6.30pm: Online Service** held via Zoom.

These services give a lovely space to pause and listen to music and readings which, at the end of the weekend, can prepare us for the week ahead. You can find the Zoom link on the Pew Sheet and on the website.

**H.R. MILLEN LTD**  **Training Facilitator**

**First Aid**

- CPR
- Defibrillation
- Control of Bleeding
- Paediatric
- Choking
- Head Injuries
- ..... AND
- MANY MORE

For more information call us now  
**01799 531100**  
*Would you know what to do if someone stopped breathing?*

H.R. Millen Ltd;  
Unit 7, Park Farm, Park Road;  
Great Chesterford;  
Saffron Walden  
CB10 1RN  
Email: [Office@hrmillen.co.uk](mailto:Office@hrmillen.co.uk)

 **TM Electrical**  
SERVICES

**The Complete Electrical Service**  
Solar PV - Battery Storage - Vehicle Charging  
Local - Experienced - Competitive

E: [enquiries@tm-electrical.com](mailto:enquiries@tm-electrical.com)  
[www.tm-electrical.com](http://www.tm-electrical.com)  
Tel: 01223 441111

**FREE ESTIMATES**





**Carpet,  
Upholstery,  
Fine Rugs, Stone  
Floor Cleaning,  
Wood Sanding**

*"We were very satisfied with the technician and the way the carpets were cleaned. He was very polite and phoned to say he was coming and again later to let us know he would be with us shortly. Thank you for your services." Mrs Burling*

**Call today  
01223 863632**

**1st**  *Please quote Great Shelford Mag*

Art of Clean, Denny Lodge Business Park, Ely Road, CB25 9PH  
[www.artofclean.co.uk](http://www.artofclean.co.uk)

**THE  
GOG**

**FARM SHOP**  
ESTD • CAMBRIDGE • 1919

BUTCHERY • DELICATESSEN • GROCERY • CAFÉ

**WWW.THEGOG.COM**

## NOVEMBER SERVICES AND EVENTS

<b>Saturday 2 November</b>	
	10–12noon: <b>Maureen’s Coffee Morning</b> In the Community Room. All welcome.
<b>Sunday 3 November: All Saints Sunday</b>	
	<p><b>8am.</b> A traditional <b>All Saints Holy Communion</b> using the Book of Common Prayer.</p> <p><b>10am. Parish and Family Communion Service</b> where the children take part, there will be singing and activities and a story about a Saint who helps and inspires us.</p> <p><b>5pm A service to Commemorate the Faithful Departed.</b> During the service we will read out the names of those who have died in recent times and we will remember them. We welcome anyone to come to this who would like to remember a loved one and light a candle. <i>Please add the names of people you would like to be remembered to a list at the back of the Church on Sunday October 27.</i></p>
<b>Monday 4 November</b>	
	There will be no meeting of the <b>Pilgrim Group</b> this week.
<b>Sunday 10 November: Remembrance Sunday</b>	
	<p><b>8am:</b> Traditional <b>Holy Communion Service</b> using the Book of Common Prayer.</p> <p><b>9.30am The United Church and Village Remembrance Day Service</b> takes place this year in Great Shelford Free Church, and we will be joining them for this service. At the end of the service, we will make our way to the War Memorial to remember together and lay wreaths and crosses. Refreshments will be served.</p>
<b>Monday 11 November</b>	
	<p><b>10.45am Act of Remembrance starting at the War Memorial.</b></p> <p>The Roll Call will be read out of those from the village who laid down their lives for our peace and liberty. We will remember them in the two minute silence at 11am and honour their sacrifice.</p>

<b>Mondays 11, 18 and 25 November</b>	
	<p><b>The Pilgrim Group</b> will meet at the <b>Vicarage at 2pm.</b></p> <p>We are looking at the Apostles Creed and welcome anyone who is interested in discussing what this means in the world today.</p>
<b>Sunday 17 November: The Second Sunday before Advent</b>	
	<p><b>8am:</b> Traditional <b>Holy Communion Service</b> using the Book of Common Prayer.</p> <p><b>10am:</b> Contemporary sung <b>Parish Communion Service.</b></p> <p><b>5pm Youth Discussion Group Meeting in the Community Room.</b> This is a time to talk about key issues of the day and there will be tea and cake.</p>
<b>Thursday 21 November</b>	
	<p><b>10.30am</b> There will be a <b>Communion Service</b> taking place at <b>Cambridgeshire Care Home.</b></p>
<b>Sunday 24 November: Feast of Christ the King.</b>	
	<p><b>8am</b> The traditional <b>Holy Communion Service</b> using the Book of Common Prayer.</p> <p><b>10am Parish Communion</b> with a Sung Festival Eucharist to celebrate Christ the King.</p> <p><b>3pm Open Space Activity</b> for children and families. This will take place at the Free Church, in the garden behind Cara coffee shop. There will be a range of games and creative activities, as well as juice and biscuits for children and tea and coffee for adults.</p>
<b>Thursday 28 November</b>	
	<p>We will hold a <b>Fundraising Lecture in the Community Room.</b></p> <p><b>7pm for 7.15pm start. Martin Lines</b> a farmer who is working in conservation and will talk about <b>‘Nature Friendly Farming.’</b></p>

*Thought for the month:* To plant a garden is to believe in tomorrow

*Audrey Hepburn*

**For more information about Great Shelford Parish Church**

Vicar: Revd Dr Julie Norris [Revjulienorris@gmail.com](mailto:Revjulienorris@gmail.com)

Parish Administrator: David Wilding [wildingdavid1@gmail.com](mailto:wildingdavid1@gmail.com)

Great Shelford is a Registered Charity No 245456





**travel counsellors**

Check-in time?  
Whenever you need us.

24/7 support no matter where you are, or what time you need us. At travel counsellors we're all about you. Your needs wants and aspirations for far-flung celebrations - coupled with personal service beyond compare - you can always rely on me.

*Cheryl Harradine*  
TRAVEL COUNSELLOR  
01223 842670 / 07742272131  
cherylh@travelcounsellors.com  
www.travelcounsellors.com/cheryl.harradine

★ Trustpilot ★★★★★



QUALITY FLOORING SUPPLY,  
INSTALLATION & AFTERCARE

**Specialists in  
Wood Flooring,  
Carpets & Vinyl  
Flooring Solutions**

*"We've had a vinyl floor fitted in a loft bedroom. Sam and Nigel were excellent throughout. The whole experience was made very stress free due to their professionalism and the floor looks amazing. I would not hesitate to recommend The Art of Flooring."*

**Juliet Mills, Cambridge**

**01223 755 802**  
Please quote Great Shefford Mag

Best of <b>houzz</b> 2020 SERVICE	Best of <b>houzz</b> 2020 DESIGN
--	---

141 Milton Road Cambridge CB4 1XE  
www.ArtofFlooring.co.uk



**WATERLILIES**  
SKIN CLINIC • BEAUTY

Call 01223 844700 Book online at [www.waterlilies.org.uk](http://www.waterlilies.org.uk)

2d Dolphin Way, Off London Road, Stapleford, CB22



**CAMBRIDGE  
KIDS CLUB**

**WE'RE  
HIRING**

WE ARE SEEKING CREATIVE & ENERGETIC PLAYWORKERS FOR OUR BREAKFAST & AFTERSCHOOL CLUBS ACROSS CAMBRIDGE

HOURS OF WORK - 07.30-09.00 & 14.30-18.15 MONDAY TO FRIDAY

**£300 BONUS AVAILABLE NOW!**  
THE APPLY IS AVAILABLE UNTIL NOVEMBER. PAYABLE ONLY ON SUCCESSFUL COMPLETION OF 12 MONTHS PROBATIONARY

PREVIOUS EXPERIENCE IN CHILDCARE OR PLAYWORK DESIRABLE

ADDITIONAL HOURS ALSO AVAILABLE OUTSIDE OF TERM TIME, IN OUR SCHOOL HOLIDAY CLUBS .

PAY RATE BASED ON EXPERIENCE, STARTING AT £12/HOUR  
STAFF BENEFIT - FREE CHILDCARE

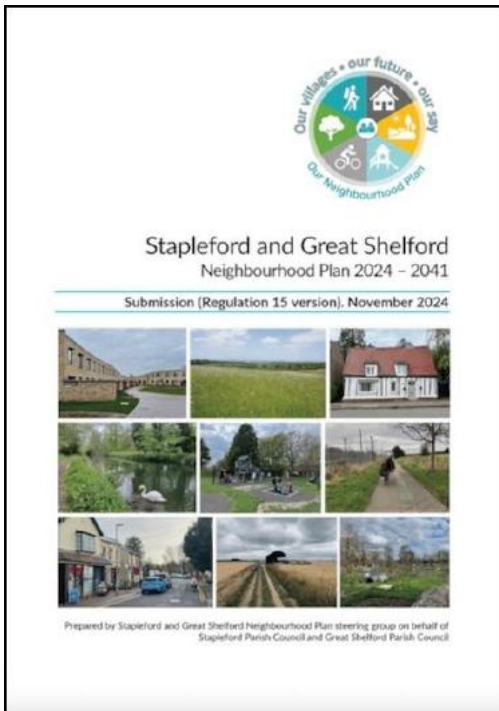
EMAIL: [INFO@CAMBRIDGEKIDSClub.COM](mailto:INFO@CAMBRIDGEKIDSClub.COM)  
FOR FURTHER INFO & TO APPLY NOW!

## NEIGHBOURHOOD PLAN UPDATE:

### AS SUBMISSION DAY APPROACHES, HERE'S A REMINDER OF WHAT WE'RE DOING AND WHY

I write this as the finishing touches are being made to the Stapleford and Great Shelford Neighbourhood Plan (NP). Those of you who have been following my monthly missives for the past three years may have an inkling of how this feels. It's been a bit like working towards an exam in a subject about which I and the rest of the steering group had virtually zero prior knowledge. There have been mountains of regulations, data and analysis to digest; reports and updates to produce; we've had expert tuition from planning consultant Rachel Hogger, Member of the Royal Town Planning Institute (MRTPI); there's been an awful lot of negative feedback from land agents; long days spent bashing away at the computer keyboard; and **now finally, the community's** needs and aspirations linked to any future development of this area are approaching examination time. I'd hesitate to suggest that we've become authorities on neighbourhood planning, but we certainly know more than enough to bore the pants off anyone we sit next to at a dinner party!

At parish council meetings from mid-October to early November, I will be reporting on what is called the 'submission version' of the NP (and the myriad other documents which must legally accompany it) to our parish councillors and asking them to approve its submission to the local authority. If granted, Greater Cambridge Shared Planning, acting on behalf of South Cambridgeshire District Council, will put our submitted NP out to a final round of formal consultation. This is effectively a chance for those who commented on it during formal consultation in Spring 2024 to see whether or how we have amended the NP in the light of their feedback, giving them a right to reply if they are unhappy.



Any such responses will then be submitted alongside the NP to an independent examiner to decide whether the NP meets the ‘basic conditions’ legally required of it. If it does, a yes/no referendum will be held amongst those on the electoral register in Stapleford and Great Shelford. A majority ‘yes’ vote would see the policies in our NP sit alongside those in the Local Plan and National Planning Policy Framework and used in decisions about planning applications coming forward in our area. This is precisely the goal we have been working towards over the past three years. Stapleford and Great Shelford are *our villages* and it’s *our futures* at stake and we want to have a say in that.

Some readers may be new to neighbourhood planning, whilst others may have dozed off through lack of interest. So let me remind you what this is all about.

Neighbourhood planning is a legal right which allows communities to shape their development by creating their own planning policies. It cannot stop development. Instead, it’s about communities saying what they want and need from growth in their immediate area, protecting what is good, fixing what needs improving and filling gaps in what is missing.

The process is entirely optional. We could, for example, let our existing and emerging Local Plans and Greater Cambridge Shared Planning Officers direct our future. But at a time of enormous change across our region – which, in the overall scheme of things, has barely begun – this would be a missed opportunity to really make a difference to planning decisions.

I hope you feel that you have had opportunities to contribute to the process and, if you have capitalised upon them, thank you for your input. Over the past three years, the steering group has undertaken three major consultation exercises, attracting input from hundreds of local residents and other stakeholders – you can’t have missed our banners and posters plastered at various times around the villages. We have reported regularly on our progress via our village magazines, dedicated NP webpages ([www.greatshelfordparishcouncil.gov.uk/SGSNPlan](http://www.greatshelfordparishcouncil.gov.uk/SGSNPlan)), local Facebook pages and parish council meetings and minutes. It has truly been a community-wide effort and 21 proposed planning policies have emerged from it. These span housing needs, climate change and biodiversity, landscape protection and improvement, community amenities and infrastructure, active travel, traffic movements and countryside access. We all have different priorities in life, but I hope there’s something there for everyone.

As someone who loathes motivational quotes, I’m going to be hypocritical and end with one. Apparently, it was JF Kennedy who said it, but I’m through with fact checking for the day so it could equally have been a 12 year old Instagrammer: ‘Things do not happen. Things are made to happen.’ We really are so very close to making it happen for Stapleford and Great Shelford.

Jenny Flynn

*Chair, Stapleford and Great Shelford Neighbourhood Plan steering group*

## DIARY NOVEMBER 2024

Date	Event	Time	Place
2	WI talk: Garden Through the Year	7.30pm	St Mary's Community Room
6 & 13	Annual chutney tasting mornings. at Country Market	9am–11.30am	Memorial Hall
10	Remembrance Sunday, united church service	9.30am	Free Church
11	Act of Remembrance	10.45am	War Memorial
15	Twinning Association Wine Tasting	7pm	Free Church
27	Engage Talk	2pm	Library
Country Market 9–11.30am every Wednesday			

	<p><b>BIN COLLECTIONS</b></p> <p>Black bins                      Tuesday 12, 26 October</p> <p>Blue and Green bins        Tuesday 5, 19 November</p>
	<p><b>POST BOXES</b></p> <p>Coppice Avenue, Mill Court (Hinton Way), Library, Old Vicarage, Church St, High Green bus stop, Stonehill Road, Macaulay Avenue.</p> <p>Usual post box collections are 9am.</p> <p>The latest collection is from the Post Office at 4.45pm.</p>
	<p><b>POST OFFICE</b></p> <p>The Post Office is at Kash Stores, 35 Hinton Way.</p> <p>Open Monday to Saturday 9am–7pm, Sunday 10am–4pm.</p>
	<p><b>LIBRARY</b></p> <p>Monday 3–7pm, Tuesday 10am–1pm &amp; 2–5pm, Wednesday 10am–1pm, Thursday closed, Friday 10am–1pm &amp; 2–6pm, Saturday 10am–1pm. NB The library is closed on bank holidays.</p>

## GRANTA MEDICAL PRACTICES

During winter, services such as GP surgeries and hospitals experience increased patient demand, mainly due to cold weather and peaks of common infections and ailments.

Between us all, we can help alleviate some of the demand by using alternative health services for those more minor conditions.

A number of pharmacies offer an extended service called **Community Pharmacy Consultation Service (CPCS)**, where they can review and treat a number of minor illnesses and ailments. You can contact your local pharmacy directly or our reception teams can arrange a referral for you. If you are calling us with a minor illness or ailment, our reception teams may also signpost you to CPCS in the first instance.

There are many conditions covered by CPCS, including (but not limited to) generalised pain and swelling, sore throats, bites and stings, headaches, mouth ulcers, constipation and diarrhoea, colds and flu, tiredness and vomiting.

Additionally, pharmacists are able to offer treatment and prescribe medication for some conditions without you needing to see your GP. This is called **Pharmacy First**. Such conditions include:

- Earache (aged one to 17 years)
- Impetigo (aged one year and over)
- Infected insect bites (aged one year and over)
- Shingles (aged 18 and over)
- Sinusitis (aged 12 years and over)
- Sore throat (aged five years and over)
- Urinary tract infections or UTI's (women aged 16 to 64 years)

If you contact us with an eye problem, our reception teams may signpost you to the **Minor Eye Conditions Service (MECS)**. MECS is made up of a team of eye specialists who treat non-emergency eye conditions that do not need hospital attention. Conditions covered include acute red eyes, acute irritated or inflamed eyes, sticky discharge or acute watery eyes, in growing eyelashes, foreign bodies in the eye and recently occurring flashes or floaters.

If you require any further information about any of the above services please do not hesitate to speak to your local pharmacy, our reception teams or email us on [cpicb.grantapatientsservices@nhs.net](mailto:cpicb.grantapatientsservices@nhs.net)

We wish you all a healthy and safe November.

*Sandra East, Head of Patient Services*

## SAWSTON FUN RUN & WALK – 2025

### BECOME A BENEFICIARY

We are delighted to inform you that organisations can now apply to become a beneficiary of next year's Sawston Fun Run & Walk. This excellent community event raises thousands of pounds for local good causes.

We would like to hear from local community groups who would benefit from some additional funding in 2025. Grants are usually in the range of £250 - £1,500.

The grants will be paid after next year's fun run on Sunday 11 May 2025 and are subject to the event going ahead and the anticipated funds being raised.

To give you a flavour of the type of support we have provided this year we have helped 24 local organisations in a variety of ways. We helped a community café buy a new energy efficient freezer, schools and other organisations purchase play, storage and sports equipment. We helped local organisations train new leaders and purchase vital first aid and lifesaving equipment. We were also proud to support local groups improve the access and functionality of their community spaces.

If you feel your organisation could be helped by a grant from next year's Sawston Fun Run & Walk please email David Ellis for an application form at [davidellis365@btinternet.com](mailto:davidellis365@btinternet.com) The form is also available on the Fun Run & Walk website at <https://sawstonfunrun.co.uk/>

We hope to receive applications from a wide variety of local community groups.

**Don't delay.**

**Completed applications should be returned by 23 November 2024.**

*David Ellis, Sawston Fun Run & Walk*

### READER'S LETTER

I saw an article in the Great Shelford Village News.

People don't seem to know what to do with hedgehogs. I thought you may be interested in the information contained in the poster on the next page.

The British Hedgehog Preservation Society is always a good source of advice but sadly not every vet's practice is willing to touch wild animals. This poster has a number to call if needed:

*James Goddard*

# Hedgehogs in need of help:





<p><b>LETHARGIC</b> Hedgehogs don't sunbathe!</p>	<p><b>FLIES</b> If there are flies around a hedgehog it needs help.</p>	<p><b>WOBBLY</b> If hedgehogs are wobbling as they walk there is something wrong.</p>
<p><b>OBVIOUSLY INJURED</b></p>	<p><b>TRAPPED</b> Have been caught in netting, a pond, drain, etc</p>	<p><b>HOGLETS</b> If seen out in the day without an adult and/or squawking</p>
<p><b>OUT DURING THE DAY</b> Some exceptions being a mum nest building or taking a break from the nest or any adult that has been disturbed and is seeking safety. These hedgehogs will be healthy looking and walking with 'purpose'.</p>		

## If you see hedgehogs in need of help, please carry out the following first aid:

- + Use gardening gloves or a folded towel to gently pick the hedgehog up and pop it into a high sided cardboard or plastic box.
- + Bring the box indoors away from flies.
- + Keep the hedgehog in a quiet room away from pets and children and don't be tempted to look at it any more often than you must to carry out first aid.
- + Unless it's a very hot day, wrap a warm hot water bottle in a towel and place the hedgehog on it, with another towel gently draped over the hedgehog to keep the warmth in, make sure it has room to get off the bottle and that it stays warm (but not hot) at all times.
- + Offer a small amount of hedgehog food or meaty cat or dog food and some water – don't force feed.
- + If it is a small hedgehog or hoglet do check nearby for others from the same litter that might also be in trouble.
- + Call the British Hedgehog Preservation Society on 01584 890 801 for the phone number of your local independent hedgehog rescue volunteers (or go direct to the rescue if you have contact details).



The British Hedgehog Preservation Society, Hedgehog House, Dhustone, Ludlow, Shropshire SY8 3PL  
 Tel: 01584 890801 E-mail: [info@britishhedgehogs.org.uk](mailto:info@britishhedgehogs.org.uk) [www.britishhedgehogs.org.uk](http://www.britishhedgehogs.org.uk)

 [@thehedgehogsociety](https://www.instagram.com/thehedgehogsociety)

 [@hedgehogsociety](https://twitter.com/hedgehogsociety)
 [British Hedgehog Preservation Society](https://www.linkedin.com/company/British-Hedgehog-Preservation-Society)

Reg Charity No. 1164542

## Care For Trees



Qualified  
Reliable  
Insured  
Affordable

For a free quote call Mike  
Wallman on 01223 846390 or  
email [info@carefortrees.co.uk](mailto:info@carefortrees.co.uk)

FAMILY **Barker Bros** BUTCHERS  
EST 1541



Packaging  
Free  
Vegetables  
now on  
Sale

**QUALITY, LOCAL MEAT FOR EVERYDAY**

43 High Street, Great Shelford  
Tel: 01223 843292 [www.barkerbrosbutchers.co.uk](http://www.barkerbrosbutchers.co.uk)

## J M R Electrical



**Electrical  
Contractor**



All Domestic, Industrial &  
Commercial work undertaken

21 Ashen Green, Great Shelford, Cambridge  
Email: [jmr.electrical@hotmail.com](mailto:jmr.electrical@hotmail.com)  
Tel: (01223) 844680 Mobile: 07766 68 38 86

## QUALITY BESPOKE PICTURE FRAMERS

**SIMON ROBINSON  
& SON**

Professional, Friendly Service  
Over 25 years' experience

Wide Selection of Frames  
Conservation Materials Used  
UV Protective Invisible Glass

Artwork/Photography  
Needlework/Tapestry  
Oil Paintings and  
Canvases Stretched  
Unusual Objects Framed  
Made to Measure Mirrors  
Limited Edition Prints Available

**Tel. 01223 873123**

Opening Hours:  
Tues-Fri. - 9am-5.30pm  
(Saturday - By Appointment)

[www.robinsonframes.co.uk](http://www.robinsonframes.co.uk)  
[lester@robinsonframes.co.uk](mailto:lester@robinsonframes.co.uk)

STUDIO 6, PENN FARM,  
HARSTON RD,  
HASLINGFIELD, CAMBRIDGE  
CB23 1JZ  
(AMPLE PARKING)

**HEATWAVE  
SERVICES**



- Qualified to service and repair gas, oil and LPG boilers
- Installation of new central heating systems, unvented hot water cylinders
- Landlord Certificates
- Worcester Bosch Accredited Installer

Whittlesford based company for all your heating and hot water  
requirements

Tel: 01223 837774 or 07795 304013

Email: [heatwaveservices@btconnect.com](mailto:heatwaveservices@btconnect.com)

15 Maynards, Whittlesford, Cambridge, CB22 4PN



## LIBRARY

Now the nights are long and cold why not pop into the library to find a book to curl up with? We have lots of wonderful books to while away a dank and dark November. Are you stuck in a book rut? Why not browse our customer and staff recommendations?

### EVENTS FOR CHILDREN

**Story, Rhyme & Duplo Time** Every Tuesday at 10.30am For children aged 0–4 years. Enjoy stories and rhymes led by our wonderful volunteers. This is a free drop in event. Parents/carers please stay with your children.

**Stay and Play** Fortnightly. Thursday 14 and 28 November, 2–3.30pm. For children aged 0–3 years. A relaxed drop in session for families with young children, £2 per family. Toys provided.

**LEGO and DUPLO Club** Fortnightly. Monday 11 & 25 November 4–5.30. Come along and have some fun making Lego models. All materials provided. Suggested donation £1. Suitable for ages 2–10.

**Children's Games Club** Fortnightly. Monday 4 & 18 November 4–5.30pm. Board and card games provided. £1 per child, no need to book. Parents/carers please stay with your children during all library activities.

**Art Club** Every Saturday morning 10.30am–12noon, for ages 4–8. Drop in event. £1 donation. Parents/carers must supervise their children at all times.

### EVENTS FOR ADULTS

**Craft & Chat** Every Friday morning 10.30am–12noon. No need to book.

**Tea & Games** Every Friday afternoon 2–3.30pm. No need to book.

**Engage Talk** Speaker to be confirmed. Wednesday 27 November 2–3.30pm. A donation of £2 is appreciated. Please stay for a drink after the talk. Pre-book in the library or via [Cambourne.referral@cambridgeshire.gov.uk](mailto:Cambourne.referral@cambridgeshire.gov.uk)

Also, don't forget that our Digital Buddy is in every Tuesday from 2–4pm.

*Mel Abbiss – Community Librarian*

**Opening hours: see page 26**

**Contact details:** Telephone: 0345 045 5225

Email: [Cambourne.referral@cambridgeshire.gov.uk](mailto:Cambourne.referral@cambridgeshire.gov.uk)

Web: [www.cambridgeshire.gov.uk](http://www.cambridgeshire.gov.uk)



# D.L.M. AUTOS

63a Orchard Road, Great Shelford CB22 5AA

## MOT - SERVICE - REPAIR

### 01223 844828

[www.dlmautos.co.uk](http://www.dlmautos.co.uk)



**ENTIRE**  
GROUP



**Water Safe**  
HEALTHY CHOICE



The Complete Gas Heating and Plumbing Company

Plumbing • Heating • Gas  
Bathrooms • Water Softeners  
Property Maintenance

Tel: 01 954 204044 • Web: [www.entiregroup.co.uk](http://www.entiregroup.co.uk)  
Email: [service@entiregroup.co.uk](mailto:service@entiregroup.co.uk)



**The Country Store**

*Pet, Equine, Smallholder,  
Shooting supplies,  
Country clothing,  
Wild bird food*

Unit 12a, Saweton Park,  
Pampisford, Cambridge  
CB22 3EE

[www.thecountrystore.co.uk](http://www.thecountrystore.co.uk)

Tel 01223 837977



**FIRST CARE HOMES**

WHERE CARE COMES FIRST

## The Cambridgeshire Care Home

Situated in Great Shelford, the premier choice for a boutique care home in historic Cambridge. We provide unrivalled care using state-of-the-art technology and offer Dementia, Nursing and Residential care with a fully inclusive service package.

To enquire or book a showround call 01223 551 200 and ask for Yvonne Quigley, Customer Relations Manager.

## 2G3S

**Dr Bike** continues to run its volunteer-run weekly Bike Repair Sessions at the Old Slaughterhouse in Stapleford, 3–5.30pm every Tuesday. Children are welcome to come and learn how to look after their bikes and do simple maintenance and repairs, but please attend with them (for safeguarding reasons). If you are interested in joining our team of volunteers or have any questions for Dr Bike, get in touch on [drbikestapleford@gmail.com](mailto:drbikestapleford@gmail.com). You can also book a time slot at that address.

We have a busy timetable this month. Hope you can attend at least one event!

**Transport Evening** – this had to be cancelled in June, but has been rescheduled to Monday 11 November, 8pm at Cox’s Close in Stapleford. The topic is Perspectives on the Future of Personal Transport. If your next car is likely to be an electric car this discussion is for you. We aim to cover a number of perspectives, from the practical, the local, how green the electrical vehicle revolution might be, relevant government policy and, if time, some of the geopolitical implications.

**Film night** – we are showing the film ‘Fugolburna’ on Monday 18 November, jointly with South Cambs Organic Gardening group. It will be at Cox’s Close in Stapleford, at **7pm**. David Cottee and Nigel Kinnings, who belong to Fulbourn Forum and who made this beautiful film, will be present to answer questions. £2 to attend, email Helen Harwood at [helensshelfordhistory@gmail.com](mailto:helensshelfordhistory@gmail.com) or ring 840393 to book your place (you can also just turn up on the night).

If you enjoyed ‘Pure Clean Water’ you will be interested in this film: ‘Fugolburna’ (the Anglo-Saxon name for Fulbourn) is a documentary film produced by Fulbourn Forum which is a call to protect and restore the area’s iconic chalk streams, currently in crisis. It also celebrates the beautiful Fulbourn Fen Nature Reserve and beyond and shows the efforts made by the local community and environmental groups to support nature recovery and to maintain and improve the health of local ecosystems.

If you miss our showing, it is also being shown at Storey’s Field in Eddington on 28 November, more information and booking on the Transition Cambridge website.

**Book Club** – next date is **Tuesday 19 November**, and the book is ‘Techno Feudalism – What Killed Capitalism’ by Yanis Varoufakis. 8pm at the Three Horseshoes, Stapleford.

**Repair Café** – the next one is on Saturday 23 November. You can book in a repair on the Cambridge Carbon Footprint website. It will be held at **St Mary's Community Hall, Church Lane, Sawston CB22 3JR, 2–5pm.**

If you are interested in green matters and the environment at all levels (individual, local, national, international), send an email to *mail2G3S@gmail.com* to sign up for our quarterly newsletter, or to get more information about our meetings. We are a friendly group and welcome anyone who wants to come along to one of our events or to find out more about how we can live more sustainably. Also see our Facebook page and our website *2g3s.staplefordvillage.org.uk*.

*Helen Hale*

## COUNTRY MARKET

It must be November. Darker mornings, shorter daylight hours, falling leaves and you may have memories of smoky bonfires. The changing season is perhaps best seen in the Craft section of the market.

Our delightful display table now captures the seasonal change through the warm colours, wholesome food and cosy themes of autumn. Maybe it is time to treat yourself to a new woolly hat and scarf, perhaps a cowl or some hand knitted socks. For the latest market update have a look at the many products on our facebook pages at *<https://www.facebook.com/gtshelfordmarket>*

November also means it must be time for our annual chutney tasting mornings. The two dates for your diaries are Wednesday 6 and 13 November when you have the chance to sample many varieties of homemade chutney on a bit of cheese and cracker before you select and buy.

If you haven't been into the Market, please come and join us. We think of ourselves as a welcoming social hub with free entry to a friendly and warm environment, plenty of chatter, plenty to look at and then you can enjoy a hot drink and homemade cookie.

A few customers use our ordering system but we would welcome more. Popular lines sell out quickly so why not order! It's easy: – call on 01223 843946 or email *dorothy@woodlandsroad.plus.com*.

Whether it's sunshine or showers, you have cash or card, we look forward to seeing you in the Memorial Hall on Wednesday mornings **9–11.30am.**

*Dorothy Doel*

# Poorly PC?

The PC Doctor will get your PC back in tip-top health and squeaky clean!

## PC Doctor Edward

(your local computer GP)

# 07 929 660 981



### Welcome to Coach House Health Care

– a refurbished and renovated clinic, situated in the grounds of Anstey Hall, where you can now find all your health and well-being practitioners under one roof.

Our qualified, experienced practitioners offer treatments in the following areas:

- Podiatry/Chiropody
- Physiotherapy
- Osteopathy
- Sports Massage
- Psychiatry
- Clinical Psychology
- Plastic Surgery Consultations, including skin lesion assessments
- Consultant Dermatology
- Microsuction Ear Wax Removal
- Clinical Hypnotherapy
- Thread Vein Removal using Veinwave
- Medical Aesthetics
- Plastic and Cosmetic Surgery



Animesh Patel, Plastic Surgeon and co-owner  
Lorna Bacon, Podiatrist and co-owner



### COACH HOUSE HEALTH CARE

The Courtyard, Anstey Hall, Maris Lane, Trumpington, Cambridge CB2 9LG  
01223 340491

reception@coachhousehealthcare.co.uk  
www.coachhousehealthcare.co.uk

Free car parking and wi-fi

#### CLINIC ROOMS AVAILABLE TO RENT

If you are a qualified practitioner, looking for a clinic to practise, contact us to find out how to join our team. We can now support CQC registered clinicians to use us as a location for their CQC registered procedures.



## JASON KIRBY

Professional Painting & Decorating Ltd

All Aspects of Internal & External Decorating  
Period, Residential & Commercial Properties.  
Wallpaper & Mural Install  
Kitchen Cabinet & Furniture Re-Sprays.  
Floor Sanding & Restoration.  
City & Guilds, NVQ Qualified.  
Service, Quality & Reliability.



01954 211775

www.jasonkirbyltd.co.uk



### Safe Ear Wax Removal

Accredited by UK Microsuction.  
Member of British Audiology Association.

Sue Levy  
Sawston

07779 674924

## THE SHELFORDS WI

### JIMMY'S

At our October Meeting, Anne Ashhurst introduced Barry Griffiths (Community Engagement Officer) and Vicki Willes (volunteer) from Jimmy's Cambridge to talk about what the organisation does.

Jimmy's opened in 1995 as a night shelter but now offers a much wider range of support. It was inspired by Jim Dilley, who spent much of his life sleeping rough. Jimmy's is no longer a night shelter but at its East Road Site provides 25 single person ensuite rooms. Across Cambridge it also has some 3/4 bedroom shared houses and 22 modular homes.

Vicki explained that Outreach Workers connect with homeless people and offer them a place at Jimmy's East End when one becomes available, although room would always be found for a very vulnerable person. Jimmy's services are provided for those who have a connection with Cambridge and are aged between 18 and 80. Those younger and older are directed to other services. The ratio of men to women using Jimmy's services is two to one.

They have volunteers in many roles such as serving food, reception and gardening (our member Anne Ashhurst is a reception volunteer). We also learnt that Cambridge has a GP service dedicated to homeless people.

During the talk there was lively discussion between members and the two speakers and many misconceptions were broken down. I took from this meeting that Jimmy's values people as people and does not see them merely as homeless – something that perhaps we should all do. Their ethos is to move people to a position of safety and then move them on at their own pace.

Ann Ashhurst thanked our speakers and then more lively conversation followed over coffee/tea and homemade biscuits.

### FUTURE EVENTS

Our regular meetings continue on 2 November when Neil Callan will introduce us to his 'Garden through the Year'. This will be followed on 7 December by a Christmas party and craft work.

Visitors and new members will be very welcome to join us at our usual venue, the Community Room behind St Mary's Church, Great Shelford, on the first Thursday of each month at 7.30pm.

*Susan Tombs, Vice President*



## Shelford Twinning Association

**Wine Tasting with 3 course meal  
Friday 15th November 2024 @ 7pm**

**Tickets: £20 per person**

**Great Shelford Free Church Ashen Green, Great Shelford CB22 5EY**

A fun, non-competitive evening tasting a range of wines — white, red & sparkling

The tasting (accompanied by appetisers) will be followed by a main course, selection of cheeses and a dessert accompanied by a glass of wine of your choice from those tasted. No previous knowledge of wine required ... just see which you like best.



NB: Wines tasted will not be for sale  
**There will be a raffle**

**All welcome** – members and non-members.  
Please invite your friends!



**Make sure you reserve your tickets by Friday 8th November 2024**

- By phone/text Colin Jefferson: 07957465033
- By email: [colin@frenchfrogs.net](mailto:colin@frenchfrogs.net)

*Payment details will be provided in your booking confirmation – email/text  
Please advise when booking if you have any dietary requirements*

## **CAMBRIDGE FLOWER CLUB - NAFAS affiliated**

**2024 our 70th Anniversary**

Visitors welcome at the Memorial Hall, Mill Lane, Whittlesford CB22 4NE on third Thursday evenings.

Refreshments from 6.45pm. Demonstration at 7.15pm.

Membership £40 p.a. Visitors £9.00 per meeting.

General Information: Freda Orgee 01223 891464, [fredaorgee@gmail.com](mailto:fredaorgee@gmail.com)

**November 23rd – NAFAS Demonstration:**

**Lee Berrill – ‘All things Christmas’**

Stalls & refreshments 6.30 for 7.15pm.



Proud to provide treatment for:

- Sciatica
- Lower back pain
- Sports injuries (especially running)
- Neck and shoulder pain
- And more!

61a High Street  
Sawston  
CB22 3BG

01223 832 808  
vantageosteopathy.com

**GC  
GARDEN DESIGN**

Refresh your existing borders  
Design consultation on-site  
Full design service

Sustainable . Eco-friendly . Bespoke

[www.gcgd.co.uk](http://www.gcgd.co.uk)  
contact us: [info@gcgd.co.uk](mailto:info@gcgd.co.uk)



**Good coffee,  
that does good!**

[www.facebook.com/  
caracoffee123](http://www.facebook.com/caracoffee123)

*Christopher*  
**LOCKSMITH**

**ARE YOUR LOCKS BEHAVING BADLY?**

We Value Old Fashioned Customer Service  
A Local Trusted Family Business Since 1989

- 🔧 Specialist in UPVC & Wooden Doors
- 📞 No Call Out Charge
- 🔑 No Fix No Fee
- 🛡️ All Work Fully Guaranteed
- 👴 10% Senior Citizen Discount

For More Advice & Help  
Call Christopher:

**07772 111 222**

[www.christopherthelocksmith.co.uk](http://www.christopherthelocksmith.co.uk)

**MegaStorage**

SAFE & SECURE SELF STORAGE

**Self Storage in Sawston**

**Clean, Dry & Secure, 24/7 Access**

[www.MegaStorage.co.uk](http://www.MegaStorage.co.uk)

01223 833 777






## SHELFORD SCHOOL

A new academic year, a new term, a new Reception cohort. The autumn term has begun in the usual flurry of continuities and new beginnings.

On Thursday 19 September Year 1 – Year 6 parents gathered for the ‘Meet the Teacher’ evening. Mr Grey set out the whole school’s priorities for the year ahead, unpacking the school vision and explaining its approach to curriculum, behaviour and much else besides. I introduced myself as the new Chair of Governors, with many thanks to Anna Caroe for her service in this role over recent years. Amanda Smith and Anna Sidders explained the work of the PTA, before parents went to classes to meet their children’s teachers and hear more about the specifics of each year group’s learning and routines.

On Wednesday 25 September prospective new prefects gave presentations explaining why they wanted to undertake this role.

On Wednesday 2 October a group of Year 3 pupils visited Coleridge Community College to take part in a Multisports Festival. There was a great range of activities on offer from table tennis to standing long jump. The children had a brilliant time and represented the school very well.

Also on Wednesday 2 October, Year 1 went on a village walk. They explored the identity of the local community and how this is part of their own identity and sense of belonging. On Saturday 5 October the PTA held another very successful bike sale. The event raised almost £2,000.

Looking ahead, Year 6 have the annual Grafham Water trip to look forward to later in October, a highlight of the year - and indeed of their time at the school for many. Half term follows soon after that, with staff and students alike enjoying a well-earned break during the week beginning 28 October.

In closing, I would like to note the passing of former governor Marjorie Westbrook, who has died at the age of 97. Her funeral was held at All Saints on Thursday 10 October. The tributes and memories shared at the funeral were rich and poignant in equal measure and included recollections of her contribution to the life of the school, which meant a great deal to her during her long life. She has written the definitive – and, presumably, only – history of Shelford Primary School: *The Making of a Village School, 1843–1993: 150 Years of History of Great and Little Shelford Church of England Primary School*. 9780952223702. Copies of the book can be purchased at the school reception, or online. May she rest in peace.

*Douglas Leckie, Chair of Governors*

## CAMBRIDGE CAKE CREATORS

### MEETING 21st NOVEMBER 7.30PM

This will be our last meeting before Christmas.

It will be a time for everyone to have a catch-up over tea and cake with a chance to bring any baking questions to the table. Between us we will do our best to answer them!

We will also be doing a hands-on activity with a Christmas theme (details to be arranged).

For information Tel: Vanda 561053 or email: [Vanda.butler@googlemail.com](mailto:Vanda.butler@googlemail.com)

Our next meeting after this one will be on Thurs 16th January 2025.

We meet at the pavilion in Stapleford.

## OLD NEWS

### Extracts from *The Great Shelford Chronicle 1774-1868*

*Compiled and re-published by Anne George, Glynis Trundle,  
Margaret Ward and Alan Bullwinkle, 1993*

1 November 1839

INQUEST - Thomas Kinsey was found hanging in a barn in which he had been employed barley thrashing. It appeared that the mind of the deceased had been for some weeks considerably affected, in consequence of his being about to quit the service of his master; and the jury found "that he destroyed himself, he being at the same time of unsound mind."

29 November 1862

INQUEST – The county coroner, F. Barlow Esq. held an inquest here on Saturday last, touching the death of Jane Stubbins Gifford, a child of 18 months old whose father is a shepherd residing in this village. It appeared from the evidence of the mother that on the previous morning she left the child playing on the floor, but had not been gone a minute into another room when she heard it cough. She went back but could not discover what was the matter and the child died before Dr. Ramsey could get to it. It turned out that the child swallowed a screw, which choked it. Verdict: "Accidental death."

## TRADITIONAL RESTORATIONS

**A FRIENDLY LOCAL SERVICE FOR ALL TYPES OF ANTIQUE & MODERN FURNITURE**

**A complete restoration service:**

- All types of furniture repairs
- Traditional French polishing
- Hard-wearing, high-quality lacquer finishes
- A comprehensive re-upholstery service

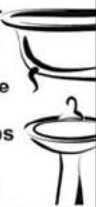


Over 20 years working in the local area  
Free estimates & advice given on all work

**JONATHAN PORTER**  
5 BABRAHAM ROAD, SAWSTON, CAMBRIDGE CB22 3DQ  
TEL 01223 835515 MOB 07932 611184

## STEVE the PLUMBER

Steve the Plumber is a local plumber with a friendly, helpful and reliable service. Small or larger jobs undertaken. Competitive rates.



Please call 07803922517 or email [steve\\_the\\_plumber@me.com](mailto:steve_the_plumber@me.com)



**Dance Dedication**

- ✦ Dance classes from 3 years
- ✦ Fully qualified and experienced teachers
- ✦ Dance exams and performing opportunities available

- |                  |                     |
|------------------|---------------------|
| ✦ Ballet         | ✦ Contemporary      |
| ✦ Tap            | ✦ Street Dance      |
| ✦ Modern Theatre | ✦ Musical Theatre   |
| ✦ Jazz           | ✦ Body Conditioning |

Our mission is to inspire a love of the performing arts through high quality dance instruction in a disciplined, inclusive and nurturing environment, whilst encouraging a strong work ethic, confidence and creativity.

Trial classes available  
Email: [dancededicationsawston@gmail.com](mailto:dancededicationsawston@gmail.com)  
Web: [www.dancededicationuk.com](http://www.dancededicationuk.com)



## AMS (EA) Ltd

Driveways, Landscaping & Plant Hire

**Our areas of expertise include:**

- All Driveways & Block Paving • Driveways Cleaning & Sealing
- Patios & Paths • Fencing • Drainage • Turfing & Seeding
- Artificial Grass • Site & Garden Clearance (Licenced)
- Grab Hire & Plant Hire • All Aggregates Delivered

All paving work comes with a 5yr min Guarantee

Call for **FREE** estimates and bookings:

Please visit our websites for examples of our work & refs:

Offices: 01838 721883 or Sites: 07780 261266

Newmarket, Cambridge and Ely

[amdriveways.co.uk](http://amdriveways.co.uk)



BRADSTONE

Asphold

BrettApproved



[amsaggregates.co.uk](http://amsaggregates.co.uk)

[www.amsealtd.com](http://www.amsealtd.com)

# ANGLIA TREE CARE



*A O'Connor*  
Tel: 01223 424454  
23 King Street  
Cambridge CB1 1LH

*Tree surgery  
Stump grinding  
Hedge maintenance  
Fully qualified & insured  
All work carried out to British  
Standard BS3998  
Member of the Guild of  
Master Craftsmen*



[www.angliatreecare.co.uk](http://www.angliatreecare.co.uk) Email: [info@angliatreecare.co.uk](mailto:info@angliatreecare.co.uk)



## FOOTBALL CLUB

The new season is well and truly underway now and all three teams have completed several fixtures. After a loss and a draw in their first two games, the first team seemed to have their season up and running with a comfortable 2–0 win at home to Milton, but a lacklustre performance in their next game away to Over Sports brought them back down to earth after a 1–0 defeat. A much improved performance a week later at home to Wisbech St Mary led to a 5–0 win and with an upcoming Challenge Cup game against Sawston United, which are two divisions below, hopes were high again. Cup games and local derbies are notoriously unpredictable however, and Sawston upset the odds with a 1–0 home win after an impressive performance. After winning this competition and being runners up in the past two seasons the early exit was very disappointing.

After an excellent win in their opening fixture, the reserves were brought down to earth after a 4–0 away defeat to Thaxted Rangers, before two wins and a draw ended a very impressive first month in the higher division after promotion. A comfortable 5–0 win at home to Hundon was backed up by a 3–3 away draw and 1–0 home win in hard fought games against Isleham United and Somersham Town respectively.

It was an extremely hard month for our young A side. After their opening day defeat a 7–4 win at home to Melbourn Dynamos was a great response, only for the visitors to later drop out of the league! Successive defeats: 3–1 at home to Elsenham and 5–0 away to unbeaten league leaders, Saffron Walden Town 'A', plus a forfeited game when we were unable to raise a team, saw them rooted to the bottom of the table with zero points.

There will be games taking place on the rec on most Saturdays so why not come along and support your local club.

*Terry Rider, Great Shelford FC*

### READERS' LETTERS

The Great Shelford Village News is always happy to receive letters from readers – see page 52 for details of how to contact us.

## TENNIS CLUB

### ANNUAL AWARDS DINNER

Celebrities, athletes and plus-ones gathered for the club's annual awards dinner at the Three Horseshoes Stapleford on Saturday 12 October. *The Village News* has the exclusive inside story of the night. Fresh from his triumph in the club singles competition, coach Ashley Powter picked up the Most Improved Male award, capping off a fantastic year. Our tournament organiser, Monika Jacquinot thoroughly deserved the prize for Most Improved Female.



Photo: Debbie Chittenden

The biggest cheer came for Russell Calne (pictured) who walked off with the Most Colourful Character award, as voted by club members. Russell's acceptance speech was clearly the best of the night, and we make no apology for printing his words in full.

He said, 'I love Shelford'.

Many thanks to all those who contributed to our auction lots, which raised a magnificent £1,000 for clubhouse refurbishment and future social events. Thanks also to the club committee and all the fantastic pub staff for making it such a great night.

#### **GSTC 2024 Award Winners**

Most Improved Male, Ashley Powter

Most Improved Female, Monika Jacquinot

Best Newcomer, Pierre Rodriguez

Most Colourful Character, Russell Calne

Team Spirit, Ladies' 5th Team

Club Member of the Year, John Coleman.

*Stephen Chittenden*

**Little Shelford Memorial Hall Film Evening****Saturday 23 November 2024**featuring *Wicked Little Letters***Doors open at 7.00 pm for a 7.30 pm start  
with a break for supper of pizza and salad.**

*Wicked Little Letters* is a 2023 British black comedy mystery film which stars Olivia Colman, Jessie Buckley and Timothy Spall.

Based on a true scandal, it follows an investigation into the anonymous author of numerous crudely insulting letters sent to the residents of the seaside town of Littlehampton.

Tickets (£15.00 per person) will be available from:

Sarah Coppendale: (842498) [coppendales@btinternet.com](mailto:coppendales@btinternet.com)

Diana Haines (841415) [dianahaines42@icloud.com](mailto:dianahaines42@icloud.com)

Please book by Wednesday 20 November so that sufficient food can be ordered.

**Little Shelford Local History Society**

Little Shelford Memorial Hall

Wednesday 6 November 2024

at 7.30pm

a talk by David Short

**Life Behind the Bar**

All Welcome



**LYNNE HORTON**  
INTERIOR DESIGN

CURTAINS & BLINDS  
FURNITURE & JOINERY DESIGN  
UPHOLSTERY & SOFT FURNISHINGS  
COLOUR & FABRIC SCHEMES  
BATHROOM DESIGN  
FURNITURE & LIGHTING SOURCING

**h**

www.lynnhortondesign.com  
lynne@hortondesign.org  
07703816370



**Rainbow  
Pre-school**

A unique place for  
2-4 year olds to  
play and learn in  
Shelford

www.rainbowshelford.co.uk  
Tel: 07985 216603  
rainbow@shelford.cambs.sch.uk



**Cambridge Cats Protection**  
volunteers take in cats,  
rehome them, and promote  
neutering and microchipping.



Call 01223 528312 to rehome  
cats or kittens. We also  
have stable or barn  
mousers looking for work.

All cats need a cat flap  
providing access to a  
safe garden. We don't  
home near busy roads.

We support neutering costs  
for local families  
on benefits: only  
£10 including a  
free microchip.

For neuter  
vouchers, call  
01223 236188.

We are run solely by volunteers and appreciate your patience at busy times.  
01223 241371 enquiries@cambridge.cats.org.uk cats.org.uk/cambridge

Reg Charity 203644 (England and Wales) and SC337711 (Scotland)



**TIM PHILLIPS & Co Ltd**  
**Accountants**

Independent, specialist service for:

**Small Business**  
**Self Assessment**  
**Personal Taxation**

FREE initial consultation – NO OBLIGATION  
Easy to find us – map on website. **FREE PARKING**

**Copley Hill Business Park**  
*Off A1307 between Wandlebury and Babraham*  
**01223 830044**  
info@TPaccounts.co.uk TPaccounts.co.uk

# SAWSTON CINEMA

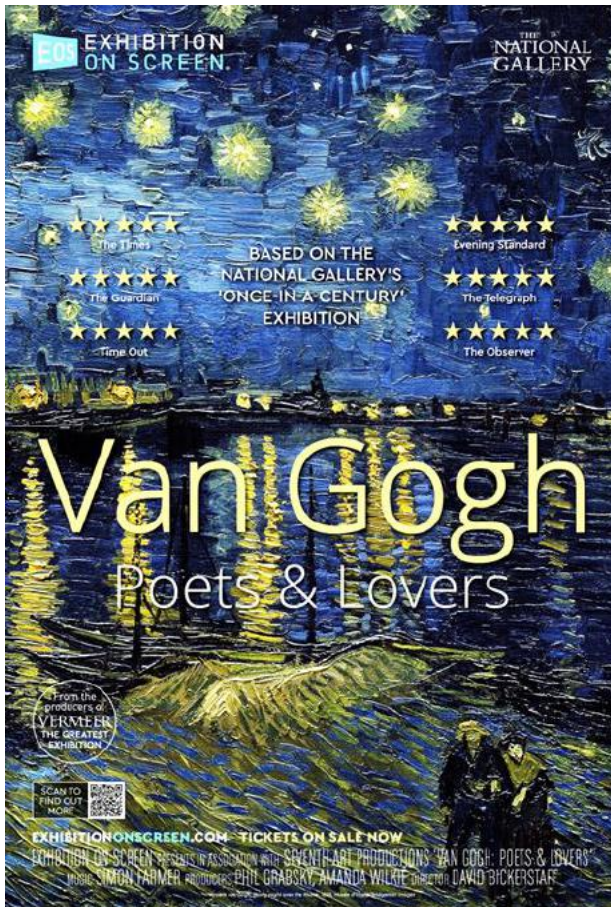
## SEE THE VAN GOGH EXHIBITION!

200 years after its opening and a century after acquiring its first Van Gogh works, the National Gallery, London is hosting the UK's biggest ever Van Gogh exhibition and Sawston Cinema at the Marven Centre is delighted to be able to show the film of this exhibition on Thursday 7 November.

Made in close collaboration with the National Gallery, it is a wonderful chance to reexamine and better understand this iconic artist. Join us to explore one of art history's most pivotal periods in this once in a century show.

More information and tickets from:

<https://sawstoncinema.org/cinema-screenings/>





**Great Shelford Mobile Warden Scheme  
(Registered Charity 1055515)**

We are a local charity that helps support the older residents of Great Shelford village to remain living independently in their own home. Through our phone calls and visits we aim to reduce social isolation and loneliness.

We can provide:

- Reassurance and security through daily phone calls and regular visits.
- Additional visits in the event of illness.
- Assistance with doctors' appointments and accessing local information.
- Help with paperwork and prescriptions, visiting the bank/post office, changing a light bulb and picking up shopping in the village.



For further information visit our website <http://www.shelfordwardenscheme.org>

Jenny David (Chair) 07764615524 [jennykmf@yahoo.co.uk](mailto:jennykmf@yahoo.co.uk)

Claire Smith (Warden) 07811676991 [saurus1960@gmail.com](mailto:saurus1960@gmail.com)



**Mrs Rosemary Rigge**

Grad Dip Phys MCSP Reg. HCPC  
Chartered Physiotherapist

TREATMENT ROOMS:

26 Mingle Lane, Stapleford,  
Cambridge CB22 5SY

or HOME VISITS

Tel: 01223 844091

Mobile: 07958 708728

Reg. BUPA, AXA, etc.

**DUXFORD BUILDING & LANDSCAPE SERVICES**

All work considered from:

- Hard Landscaping
- Brickwork
- Structural Alterations
- Carpentry
- All types of Building Works from Extensions to Conversions



**D A Rayment**

Home: 01223 837645

Mobile: 07958 774360

Email: [duxfordbuilding@btinternet.com](mailto:duxfordbuilding@btinternet.com)

Web: [www.duxfordbuildingandlandscapes.com](http://www.duxfordbuildingandlandscapes.com)



*Award winning free house & restaurant  
in the heart of the village.*

☎ 01223 503 402

@ [hello@threehorseshoes-pub.com](mailto:hello@threehorseshoes-pub.com)

🌐 [www.threehorseshoes-pub.com](http://www.threehorseshoes-pub.com)

**NB HORTICULTURE & CAMBRIDGE HEDGES**

All types of garden work  
& landscaping

Hedge & Shrub Supplier

[www.cambridgehedges.co.uk](http://www.cambridgehedges.co.uk)

Mr N Barber BSc RHS Cert

Consultant Member of the Gardeners Guild

109 Cambridge Road  
Great Shelford, CB22 5JJ

**07789 564042**

**01223 977306**

## *Beginners Ballroom & Latin*



**Wednesday evening tasters  
13th & 20th November**

**7.30-8.25pm**

**Step up to "Strictly"  
fitness & dance  
feel-good!**

**£5 per person  
or £8 per pair**

*Partner not required*

**Nightingale Pavillion, Nightingale Avenue, Cambridge CB1 8SG  
(10mins walk from Addenbrookes)**

**Bookings in advance required, see below or scan QR code to book:  
[@bookwhen.com/camsport](https://www.bookwhen.com/camsport)**



***Strictly 4U*.weebly.com**

*Inspiring  
Social Dancing*

## **SAVE THE DATE!**

**Friday 20 December: Seniors' Tea Party**

**Great Shelford Memorial Hall 2.30-4.30pm.**

**Organised by Rosey Feuell, LLM Great Shelford St Mary and others.**

**Please book by 11 December on 01223 213305 / [roseyleaf@talktalk.net](mailto:roseyleaf@talktalk.net).**

**Helpers will be recruited in November from village groups.**

## WHAT'S ON IN NOVEMBER

<b>CAMBRIDGE ARTS THEATRE</b>	
5–9	Filumena
10	The Ronnie Scott's Story
12–16	The Terence Rattigan Summer
19–23	Heathers the Musical
28–5 Jan	Cinderella
<i>Phone 01223 503333    cambridgeartstheatre.com</i>	

<b>ADC THEATRE</b>	
30 Oct – 2 Nov	Dragtime Presents: Ghouls just Wanna Have Fun
5 – 9	Sister Act
12 – 16	The Crucible
13 – 16	Nostalgia (over 18 only)
19 – 23	10 out of 12
20 – 23	Freshers' Musical
<i><a href="https://www.adctheatre.com/whats-on/">https://www.adctheatre.com/whats-on/</a> or Box office phone 01223 300085</i>	

<b>CAMBRIDGE UNIVERSITY – BOTANIC GARDEN</b>	
Until 12 Nov	Autumn Art Adventure
1 November	Family Activity – Fungi Fun
13 Nov – 23 Dec	Christmas Robin Trail
29 Nov – 21 Dec	Cambridge Botanic Lights
<i><a href="https://www.museums.cam.ac.uk/museums/cambridge-university-botanic-garden">https://www.museums.cam.ac.uk/museums/cambridge-university-botanic-garden</a></i>	

<b>CAMBRIDGE UNIVERSITY – MUSEUMS &amp; GALLERIES</b>	
Until 16 February	<b>Kettles Yard:</b> Portia Zvavahera. The first solo exhibition in Europe for this artist.
16 November	<b>Whipple Museum:</b> Making Maps Drawing Human Paths Through the World.
13 November	<b>Museum of Zoology:</b> Make Zoo and Mend. Join us for an evening of sustainable fashion!
<i><a href="https://www.museums.cam.ac.uk/whats-on">https://www.museums.cam.ac.uk/whats-on</a></i>	

# GATWARD & SONS

BUILDING ON EXPERIENCE  
CARPENTRY, JOINERY & BUILDING CONTRACTORS

Ashley

☐ 07525 494 478

Chris

☐ 07557 735 247

✉ [contact@gatwardandsons.co.uk](mailto:contact@gatwardandsons.co.uk)

EXTENSIONS CONVERSIONS RENOVATIONS ALTERATIONS



## Neaves Electrical Ltd

All aspects of electrical work undertaken.

Installation, maintenance and repairs.

We now install electric car charging points.



[www.neaveselectrical.co.uk](http://www.neaveselectrical.co.uk)

Tel: 01223 290 956

Mobile: 07702 280 687

## Thomas J Shearing

Furniture Restoration and Traditional Upholstery

Comprehensive re-upholstery service

Vast range of furnishing fabrics

Antique and modern furniture restored

Picture Framers and Restorers

French polishing and other finishes available

Bespoke mirrors made to order

Serving Great Shelford and Cambridgeshire

Tel: 07801 357148 Email: [shearing@mail.com](mailto:shearing@mail.com)



**PANTHER TAXIS**

Get out and about and save money with  
**PANTHER TAXIS**

Did you know that we now offer a REDUCED RATE village to village service to or from YOUR VILLAGE?

VILLAGES INCLUDED IN THIS SERVICE



YOUR LOCAL TAXI SERVICE

Only pay  
door to door  
not a penny  
more

Find out how much you can SAVE by downloading our app



With a fleet of over 650 vehicles running 24/7, you know who to call:

**01223 715715**

[www.panthertaxis.co.uk](http://www.panthertaxis.co.uk)

Prices are fixed based on the Cambridge metered rates to or from the included villages. Villages outside of this area may still have a cabot fee.

## CHIMNEY SWEEP

**J. L. WIGHT**  
Guild of Master  
Chimney Sweeps



Fully Insured

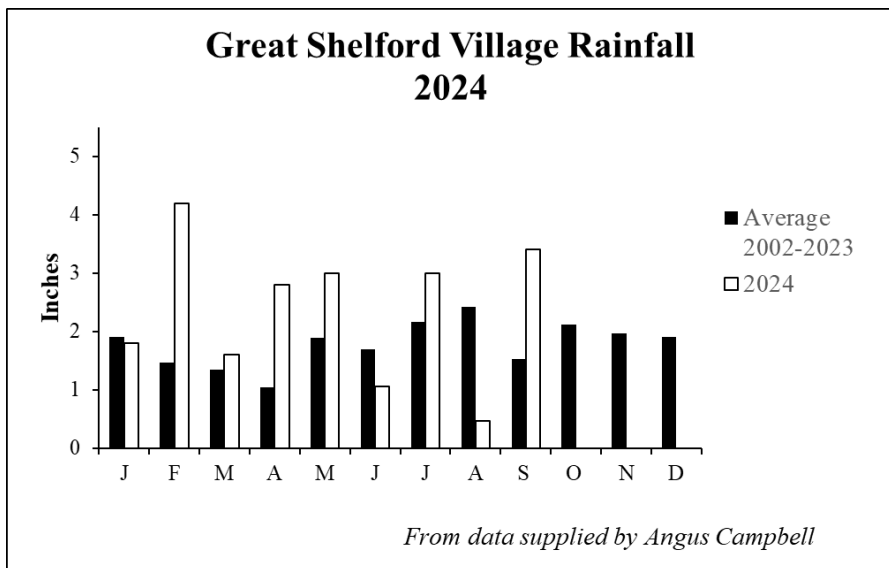
Advice given / problems solved

Certificates issued

**01954 253315**

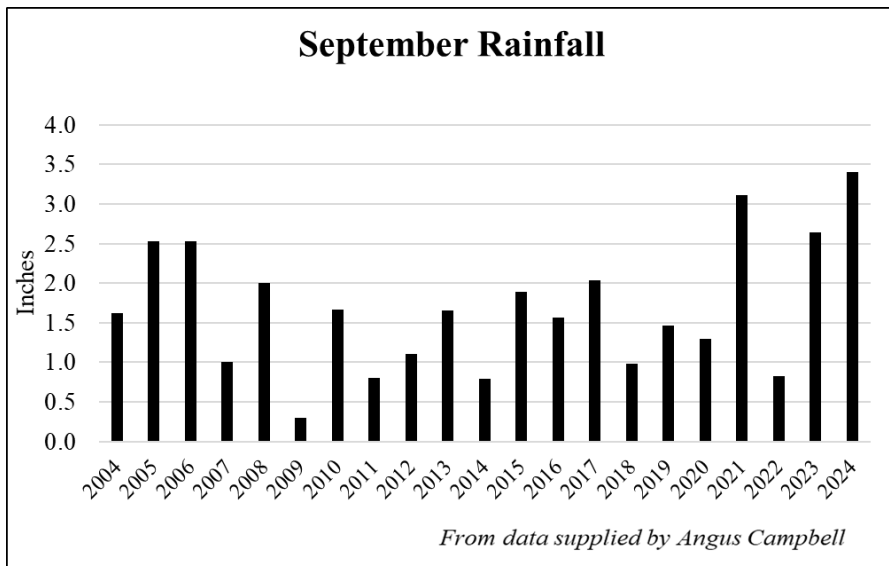
[www.camsweep.co.uk](http://www.camsweep.co.uk)

9 Cow Lane, Rampton



Readers paying close attention to the rainfall charts may have noted an interesting phenomenon this year.

Over the last 20 years August 2024 was the driest August of them all, with scarcely half an inch of rain all month. However, in the very next month September 2024, we had so much rain that it was the wettest September during that same 20 years. A curious contrast!



## HOW TO CONTACT GREAT SHELFORD VILLAGE NEWS

We are pleased to receive articles, letters and notices for community events for consideration. Please send by email (preferably as a Word document), or send paper items, with contact details, to Judith Wilson, 11 Elms Avenue, Great Shelford CB22 5LN. The copy date is usually the second Friday of the month. See the *Next Issue* box for next month's date.

For guidance, please note that an article of around 400 words, without a photo, will fill a full page. Notices for events work best as a half page (half A5) in landscape format.

### General enquiries and articles for publication:

01223 842553 [gsvneditorial@gmail.com](mailto:gsvneditorial@gmail.com)

### Commercial advertisements

These are for a 12-month period, renewed in January. There is a waiting list.  
[gsvnadverts@gmail.com](mailto:gsvnadverts@gmail.com)

### Subscriptions and online payment details

01223 842993 [gsvnsubs@gmail.com](mailto:gsvnsubs@gmail.com)

### Editorial Committee

Duncan Grey, Bridget Hodge, Marjorie Smith, Judith Wilson.

### NOTE

The *Great Shelford Village News* is published by the Editorial Committee, whose members are delighted to receive the many regular and occasional contributions that make it all possible. The Committee accepts such contributions in good faith, but cannot take responsibility for the accuracy of information contained therein. The views expressed are those of the contributors and do not necessarily reflect those of the Editorial Committee. The Committee, of necessity, reserves the right to amend or reject items, for a variety of reasons. In these cases (unless the changes are minor), every reasonable effort will be made to contact the contributor to obtain agreement

### DECEMBER ISSUE OF THE *VILLAGE NEWS*

The deadline for copy for the next issue of the *Great Shelford Village News* is **Friday 15 November** and it should be available on **Friday 29 November**, with subscribed copies delivered shortly thereafter.

LOCAL ORGANISATIONS

2G3S Green Group	Peter Woods	mail2G3S@gmail.com	843438
Badminton (Little Shelford)	James Newman	james@jamesnewman.org	07717 394176
Bowls Club	Gill Taylor	gill.mtaylor@gmail.com	845904
Brownies, Guides, Rainbows	Lisa MacGregor	shelforddistrict@gmail.com	843021
Carpet Bowls	Wendy Seekings	m.seekings039@btinternet.com	843416
Citizens Advice Bureau	Cambridge		0808 278 7808
Country Market	Dorothy Doel	dorothy@woodlandsroad.plus.com	843946
Cricket Club	Peter Ede	peter.ede@ntlworld.com	01223 510662
Feast – Bunch	Duncan Grey	dsg@post.com	842191
Football Club	Terry Rider	footybeast63@sky.com	01354 680661
Free Church	The Administrator	administrator@shelfordfreechurch.org.uk	842181
Friends of Shelford Library	Daphne Sulston	dsulston@googlemail.com	842248
Granta Medical Practices		capccg.Covid19.gmp@nhs.net	0300 234 5555
Great Shelford Online	David Martin	www.greatshelfordonline davidm1961@gmail.com	07772197770
Memorial Hall Bookings	Jenny Eldridge	office@greatshelfordparishcouncil.gov.uk	01223 616622 Ext 302
Mobile Warden Scheme	Claire Smith (Warden)	saurus1960@gmail.com	07811 676991
	Jenny David (Chair)	jennykmf@yahoo.co.uk	845367
Parish Church Bell-ringers	Ann Seaman	juliet.a.seaman@outlook.com	504682
Parish Church Community Room	Mary Lester	lestermh_uk@yahoo.co.uk	842411
Parish Church Friends	Bob Doel	bobdoel@woodlandsroad.plus.com	843946
Parish Church Sunday Club	Gillian Pett	gillian.pett29@gmail.com	843278
Parish Churchwardens	Simon White	churchwarden@stmarygreatshelford.org	07984 451305
	Joanne Staines	churchwarden@stmarygreatshelford.org	07790 415732
Police	Non-emergency number		101
Rainbow Pre-School	Allison Tomlin		07985 216603
Royal British Legion	Kevin Swann	sawstonpampisford.secretary@rbl.community	07496517859
Rugby Club	Secretary	secretary@shelfordrugby.co.uk	843357
Sawston Sports Centre	Sawston Village College	info@sawstonsports.com	712555
Beavers, Cubs and Scouts		contact@sandsscouts.org.uk	
Shelford & Stapleford Strikers	Douglas White	douglas.white2@ntlworld.com	561753
Shelford Bridge Club	Tony Cliff	anthony.r.cliff@gmail.com	07532 737794
Shelford Primary School	Chris Grey (Headteacher)	office@shelford.cambs.sch.uk	843107
Shelford Spokes Cycling Club	Brian Connellan	shelfordspokes@gmail.com	07941 574663
Shelford Support Group (transport to hospital, etc.)	General enquiries: Gillian Northmore	shelfordsupport@googlemail.com	504542
	John Dibnah	842054	Jan Walker
	Rosie Cranmer	513572	Marjorie Smith
			564922
Stapleford Choral Society	Adam Pounds	adampounds54@btinternet.com	07804 308042
Tennis Club	Sarah Richards	secretary@gstc.org.uk	
The Arts Society South Cambs	to be announced		
Twinning Association	Penny Pearl	penny.pearl@btinternet.com	842483
USA (Sawston Branch)	John Gray	johngry6@gmail.com	01223 841784
Village Charity	Samantha Rigby-Coghlan (Clerk to the Trustees)	clerk@gsvc.org.uk	07979 184273
WI	Vanda Butler (Secretary)	vanda.butler@googlemail.com	561053
Youth Initiative	Zac Britton	zac.britton@ssyi.club	07599 024210

**Ant Law & Brigitte Beraha**  
**Sunday 10 November | 3:00pm**

Much admired for his innovation, award-winning guitarist Ant Law joins forces with Brigitte Beraha, one of the leading vocal talents on the UK jazz scene. They perform their favourite standards plus original songs from their new album, described as warm, intimate & spellbinding.



**Jason Rebello Trio**  
**Friday 15 November | 7:45pm**

A welcome return to the Granary from the celebrated jazz pianist, whose music is renowned for its invention and melodic touch, blending jazz, Latin & soul. Rebello is joined by Orlando Le Fleming on bass and drummer James Maddren.



**Martin Roscoe, piano**  
**Saturday 16 November | 7:45pm**

Music by Beethoven, Schubert, Ireland and Debussy from one of the UK's best loved pianists, with an extraordinary performing and recording career spanning over five decades.



**Elias Quartet**  
**Friday 29 November | 7:45pm**

The acclaimed Elias String Quartet have quickly established themselves as one of the most intense and vibrant quartets of their generation. They bring music by Schumann, Beamish and Mendelssohn to the Granary.

