

Great Shelford VILLAGE NEWS

EST 1999

OCTOBER 2023

PRICE: 40p

Fun Run Race to the Finish!



Prisha Kotecha photographed by Eleanor McCrone

*A Cornucopia of Autumn Events
Autumn Gala, Concerts, Activities*

CONTENTS

Parish Council Minutes	1	Bike Sale	30
Parish Council Meetings	4	Better Ways for Busways	32
Planning Applications	4	Anthony Browne	33
Next issue of Village News	4	Playscape Update & Fun Run	35
Parish Council October News	6	Arthur Rank	37
Parish Church	8	Old News	39
Free Church	12	Football Club	40
All Hallow's Eve Festival	13	Cricket Club	41
Shelford School	15	Cambridge Cake Creators	41
Library	17	Reader's Letter	42
2G3S	19	Stagecoach New Fares	42
WI	23	Over 70s Christmas Party	44
Diary, Bins etc	24	Little Shelford Film Evening	44
Country Market	25	Stapleford Granary Events	45
Library Book Sale	26	Operation Christmas Child	46
Scout Jumble Sale	26	What's On in October	47
Cambridge Flower Club	26	How to Contact <i>Village News</i>	48
Great Shelford Autumn Gala	28	Rainfall	48
Guiding	30	Local Organisations, Shelford Fun Run	

GREAT SHELFORD PARISH COUNCIL

CHAIR Malcolm Watson		DEPUTY CHAIRS Gregory Price, John Stanton	
CHAIRS OF SUB-COMMITTEES			
Planning			

GREAT SHELFORD PARISH COUNCIL

greatshelfordparishcouncil.gov.uk

SUMMARY FROM THE UNADOPTED MINUTES OF THE FINANCE AND GENERAL PURPOSES MEETING ON 16 AUGUST 2023

COUNCIL ADMINISTRATION MATTERS

a) An update following the 'Our Streets' school project run by the Traffic and Transport Infrastructure Working Group and the primary school was considered by members. It was agreed to approve the literature to be sent out to parents via the school and for two copies of each of the signs designed by children to be printed at a total cost of £304 + VAT.

b) Following the discussion at the July full council meeting, a draft Vision was considered by members. It was agreed to adopt the Vision as: *Great Shelford Parish Council (the council) believes that our village is a great place to live and work. The council proactively works to maintain and promote Great Shelford's character as a vibrant and pleasant destination village, respecting the heritage and envisaging the future contribution of this thriving and inclusive community to the wider region. The council recognises it has a responsibility to both preserve and improve the locality and the natural environment.* The Vision will be used on the website and for the three year strategy.

c) The proposed approach to increasing communication with residents was considered by members following a presentation from Cllr Disley. After a lengthy discussion it agreed that the Communications Working Group would work on developing a plan covering three campaign areas: highways, community and the village as a whole. The plan will then be brought back to the September Parish Council for approval.

d) The Traffic & Transport Infrastructure Working Group had produced a document to summarise the potential highways initiatives mentioned in the Intermodal reports. The summary provided feedback on the group's thoughts on whether they would be supported. The second Intermodal Report was received by members. It was agreed that the draft consultation be updated following a discussion with the County Councillor and District Councillors and that it should be brought back to full council for approval at the September meeting. It was agreed to publish the Intermodal Report with the consultation after the September meeting.

e) It was noted by members that input is being invited from the County Councillor and District Councillors to help steer the thinking of the Traffic and

Transport Infrastructure Working Group for future highways projects to increase safety of all users, but in particular the ideas for Church Street.

f) The Clerk provided a list of policies currently in place and those which may be required by the Parish Council. The list provides an overview of any legislation requiring the policies and review dates. It was noted that there is not a policy with respect to the Environment or Climate Change and that there is a duplicate of the green belt and statement of the green belt Action. Cllr Price and the Clerk will work on the policies and bring them back to the Finance & General Purposes in December.

It was noted that progress on the Business Plan since the last full council meeting included:

- sending guidance to the architect to allow plans to be drawn up for potential refurbishment of the Memorial Hall.
- drafting of licences for the sports clubs and discussion of leases for land
- advertising of the Autumn Gala to be held on 14 October
- confirmation of funding from Locality to help finish the Neighbourhood Plan.
- a meeting with the Clerk and volunteers at Clay Pit to discuss costing for the improvements.
- ordering trees for planting on the Recreation Ground and a meeting with the Clerk and trustees of Playscape to look at the planting in the Copse
- submission of a grant to FCC Communities Fund for the Wheelscape.

COMMUNITY MATTERS

The Communications Working Group had been asked to look at creating a Community Hub for residents over the autumn and winter period. The Clerk provided a rough idea of times when there are activities which residents can attend, generally free of charge. It was suggested that the Care Home should be contacted to see if they can add to the timetable.

FINANCE MATTERS

The Clerk provided an update on the financial situation of the Council as at 31 July 2023.

Members noted that South Cambridgeshire District Council has received some funding as part of the UK Shared Prosperity Fund which is to be used between 1 April 2024 and 1 April 2025. It was noted that correspondence had been received from South Cambs about bollards for de Freville Road and that the Cop had recently applied for anti ram raid bollards. It was agreed that the Traffic and Transport Infrastructure Working Group should investigate the potential of revitalising Woollards Lane through an Experimental Traffic Regulation Order to include flower planters as chicanes.

JO ALEXANDER

Reclaimed Teak, Concrete &
All Weather Wicker furniture for your garden

01954 267857
www.joalexander.co.uk



David Levy
MSSCh MBChA

**Chiropody
and
Podiatry**

**Home Visiting
Service**

Mobile: 07966 136972
Home: 01223 834634
01223 459239

green|weigh
minimal wasteshop

*Eco-friendly, ethically
sourced food refills &
other products*

**60 High Street
Sawston CB22 3BG**

Email:
hello@greenweighshop.co.uk

Facebook/Instagram:
@greenweighshop

Website:
www.greenweighshop.co.uk

Tues-Fri: 9am to 5pm
Sat: 9am to 4pm

**sawstoncarpet
andflooringltd**

Carpets - Sisal - Vinyl
Wood - Laminate
Karndean - Amtico - Moduleo

**Mon-Fri: 9am-5pm
Sat: 9am-4pm**

Unit 34, Eastern Counties Leather Site,
London Road, Pampisford CB22 3EE
Tel 01223 837005

sawstoncarpetsandflooring@gmail.com
www.sawstoncarpetsandflooring.com

NICHOLAS CLIFFE & CO **CHARTERED ACCOUNTANTS**

Business Advisers for South Cambridgeshire

Accounts, Audit, VAT & Tax Advice
WE WANT TO HELP YOUR BUSINESS GROW

Realistic Fees

We offer a free initial meeting and business 'health check'.

Mill House, Mill Court, Great Shelford
Tel: 01223 471576

www.nicholas-cliffe.co.uk

Full copies of the minutes of the Parish Council and Planning meetings are on the Parish Council website greatshelfordparishcouncil.gov.uk/minutes-agendas

PARISH COUNCIL & COMMITTEE MEETINGS IN OCTOBER

Planning Committee	2 October	7.30pm Pavilion
Cemetery & Allotments Committee	4 October	7.00pm Pavilion
Planning Committee	16 October	7.30pm Pavilion
Full Council Meeting	18 October	7.00pm Pavilion

Meetings may be adjourned for up to 15 minutes when the public can ask questions and put forward points of view related to business on the agenda or for items they wish to raise for future agendas. No decisions can be made in this section of the meeting.

PLANNING APPLICATIONS PARISH COUNCIL COMMENTS (4.10.23)

23/03038/HFUL	15 Davey Crescent	Front porch and single storey extension to the side and rear.
Application supported.		

23/03231/HFUL	The Kings Orchard Kings Mill Lane	Erection of a new six bedroom dwelling in the place of an existing dwelling.
Refusal recommended. It was felt that the proposals are overbearing, out of character and not in keeping with neighbouring properties all located in a Conservation Area. Members commented on the significant loss of trees. They felt that the plans provided were incomplete as proposed buildings in the garden were not illustrated and that, all in all, it was over development of the site		

NOVEMBER ISSUE OF THE *VILLAGE NEWS*

The deadline for copy for the next issue of the *Great Shelford Village News* is **Friday 13 October** and it should be available on **Friday 27 October**, with subscribed copies delivered shortly thereafter.



Shelford Day Nursery

Visit our website:

www.shelforddaynursery.org

Call us: 01223 857 129

Find us on Facebook:

Search Shelford Day Nursery

Shelford Physiotherapy

Are you in pain?

Call 01223 844 488

Stephanie Hatter BSc (Hons)

A Chartered Physiotherapist
registered with the HCPC.
Recognised provider for
BUPA, AXA PPP, Aviva, etc.



**SAM
McGUINNESS**

**CURTAIN MAKING
ROMAN BLINDS
SOFA COVERS**

Call or email
for a free quotation
07803 737518
samcampbell39@hotmail.com

Great
Value

KASH STORES

Local
Services

A great deal more from your local store!

General Groceries • Fresh Produce • Confectionery
Instore Bakery • Off Licence • Photocopying
Newspapers • Magazines • Stationery • Lottery
Dry Cleaning • Shoe Repairs • Passport Photos

Full Post Office counter facilities

33-35 Hinton Way, Great Shelford

Tel: 01223 843307

Shop opening times:

Mon-Sat:
7.00am-6.30pm
Sunday:
7.00am-1.00pm

**POST
OFFICE**

Post Office opening:

Mon-Fri:
9.00am-5.30pm
Sat:
9.00am-1.00pm

TAYABALI & WHITE

ACCOUNTANCY | TAX | CONSULTING

5 High Green, Great Shelford, Cambridge CB22 5EG

Telephone: **01223 843324**

Email: enquiries@tayabali-white.co.uk

Daniel Anderson
**Friendly Gardening
Service**

No job too big
No job too small
Good affordable
rates

07852 971 696
andersongardening
@outlook.com

PARISH COUNCIL OCTOBER NEWS

All too soon it is October and here we are anticipating the clocks going back in only a few weeks' time.

Verges

We have received lots of correspondence over the year from residents concerned about the parking on verges within the village. Though we arrange to have them looked after, they remain the responsibility of Cambridgeshire County Council. Like you, we find it frustrating when vehicles park on the grass, therefore meaning that they cannot be maintained, or the vehicles damage the surface making it unsightly. It is our understanding that the County Council will seek claims on someone's insurance for damage caused, but we are in the process of getting this confirmed. *Please note, if you have put some sort of deterrent on the verge such as stones or canes, our contractor is unable to maintain that area and we ask that you look after it instead.*

For two years we have engaged with No Mow May. 2022 was problem free due to the very warm dry weather meaning the grass did not really grow. This year was a completely different story with warm wet weather and verges with grass two feet high. The Highways Committee has recently agreed that this is not feasible going forward so will not be following this initiative again. However, we are looking to plant six areas of wild flowers which will provide a boost of colour over the summer and some much needed food for bees and butterflies.

Dog Control

I was horrified to learn that one of our contractors was covered in dog excrement (on his face) on 14 September when carrying out his role looking after our Recreation Ground due to the inconsiderate behaviour of some dog owners. As a village, we are very fortunate that dogs are permitted on the Recreation Ground (there are many villages where they are not) and it is disheartening to hear that our contractors encounter an unprecedented amount of dog poo – more than any other village they look after.

On top of this incident, we were contacted by an older resident who was knocked over on the Recreation Ground by a large dog at the beginning of the summer holidays. Please can I ask that if you are using our facilities that you ensure you know where your dog is at all times, therefore, know where they are going to the loo and when they are in the vicinity of other users. There are plenty of bins for your use. Finally, dogs should not be on the side of the path where the Playscape is. This is a dog free area for the safety of all users.

Malcolm Watson, Chairman

FOXCOTTE FENCING

A family run business offering:

- * A landscaping yard
- * A DIY shop
- * Garden machinery sales and services
- * Tree surgery
- * Woven willow fencing
- * Garden studios

**Foxcotte Fencing,
Comberton Road,
Barton,
Cambridge CB23 7BA**

**Telephone:
01223 263702**

**Email:
info@foxcottefencing.co.uk**

**Web:
www.foxcottecambridge.com**



BECOME A TUTOR

Are you a Subject Expert, Teacher, or Tutor wanting to make a difference in students' lives?

Then we have the opportunity for you!
Tutor Doctor Cambridge is looking for Primary and Secondary English, Maths, and Science tutors to work in homes and schools in the Cambridge area.



Apply today at:
www.tutor-doctor.co.uk/cambridge-norwich-recruitment
01223 430434

THE TUTORS' ASSOCIATION



tutor doctor
How learning hits home.



ASSESS



MATCH



TUTOR



SUPPORT



CAMBRIDGE EV POINTS



- Home • Workplace • Public •

01223 430040

www.cambridge-evpoints.co.uk

Contact our experienced team for all your EV charging needs.



CAMBRIDGE ELECTRICAL
ELECTRICIANS LTD



**After a buyer who loves
what you've done?**

Best talk to Bidwells

BIDWELLS



PROUD SPONSORS OF SHELFORD RUGBY CLUB

01223 624 573
talktobidwells.co.uk



GREAT SHELFORD PARISH CHURCH

Saint Mary the Virgin

Julie's Jottings

During the years of 1643/44, William Dowsing swept into Cambridgeshire churches with what has been described by the historian, John Morrill, as 'an impressive record of conceited destruction'. Many churches prepared ahead of this destructive rampage by removing paintings and artefacts and painting over the remains of ancient wall paintings. Any statues or pictures left behind were destroyed by 'Basher' Dowsing. Beautiful stained glass windows in the Church of St Mary the Virgin in Great Shelford were shattered, leaving just a few traces of the heavenly city behind. And so the church was made bare.

In 1880, the Parochial Church Council (PCC) of St Mary's set in place a plan to clean the interior walls of the Church. As they cleaned above the Rood Screen at the entrance to the Chancel they began to uncover an amazing painting, the Doom, which dates back to the 14th Century. They saw perhaps for the first time in around 240 years, the figure of Christ enthroned in splendour at the centre. On his right was the Virgin Mary and to his left was the figure of John the Baptist dressed in camel hair. There were two angels who are sounding the trumpet and some people who are being led by little devils in the direction of darkness, while saints are making their procession to the heavenly city in the other direction. This Doom painting was restored more extensively in 1970 and is one of our many treasures.

The Friends of St Mary's is a group of people who want to ensure that this beautiful historic building is preserved and maintained for the use of the whole village. Not everyone who is part of this group goes to the Church on a Sunday. What they share with everyone who worships there, is the delight in spending time in an amazing ancient building.

The rediscovery of the Doom painting brings to life a difficult part of church history. The purging of the religious images was an official policy by William Dowsing to try to stamp out idolatry. Dowsing saw art as a distraction from true worship of God. Thankfully, many more people sympathise with the contrasting view of the artist Robert Mapplethorpe who said, 'When I work, and in my art, I hold hands with God.'

The Friends of St Mary's would like others in the village who value this community asset, to join in their fundraising and support to keep the church open to visitors of all faiths and none. Please contact Bob Doel who chairs the Friends, bobdoel@woodlandsroad.plus.com Rev Julie Norris

Events

Harvest Festival takes place on **1 October**. The Harvest services include an 8am traditional Book of Common Prayer service followed by a Family and Children's Parish Communion at 10am. There will be a simple bring and share lunch together after coffee has been served in the Community Room following the 10am service.

Confirmation Classes will continue for candidates seeking to be confirmed at Easter 2024. The next session is on **1 October** during the coffee break after the 10am service and before the Harvest Lunch.

Saturday 7 October. Maureen's Saturday Coffee Morning in the Community Room 10.30am – 12noon. This is a relaxed time to catch up with other people in the village.

Sunday 8 October Eighteenth after Trinity. Rev Julie Norris will lead a traditional Holy Communion using the Book of Common Prayer at 8am. This is followed by a 10am Parish Communion.

The Pilgrim House group continues at 2pm on Monday afternoons in the Community Room behind St Mary's Church. We are looking at St. Matthew's gospel using 'Mapping Matthew' to guide our exploration.

Sunday 15 October Nineteenth after Trinity. Rev Julie Norris will lead a traditional Holy Communion using the Book of Common Prayer at 8am. This is followed by a 10am Parish Communion.

The Youth meeting will take place on 15 October at 5pm in the **Community Room**. Any young people who are over 11 are welcome to come to this. There is tea, coffee or juice available and food.

19 October A Group from St Mary's will go into **Cambridgeshire Care Home** to take a service at 11am.

Friendship Club in the Community Room on **Thursday 19 October at 2.30pm**. We celebrate with Rosey her commissioning as an Anna Chaplain at the end of last month. This authorises her to help people in the later part of their life.

Sunday 22 October Twentieth after Trinity. We have Rev Janet Parker leading both the 8am traditional Holy Communion using the Book of Common Prayer and the 10am Parish Communion service.

The Open Space is an opportunity for families and children to have fun exploring faith outside. It is a combined venture between St Mary's and the Free Church. There are games and activities for all to enjoy. The next session is on **22 October at 3 – 4.15pm outside Cara Café**.

Sunday 29 October Bible Sunday. There will be a traditional Holy Communion using the Book of Common Prayer at 8am followed by a Parish Communion celebrating the baptism of Theodore and Kharis Eusden at the 10am service.



**Shelford
Tree Service Ltd**

**Professional Tree Surgeons covering
Cambridgeshire and Hertfordshire
Fully Qualified & Insured
01763 208361 / 07743406569
shelfordtreeservice.co.uk**

Rothwell's Carpet Cleaning

**Carpet Cleaning &
Stone Floor, Upholstery, Rugs**

A few points that make us stand out:

Rothwell's has been in business since 1993.

We're an honest local family firm.

Our large truck-mounted machines mean
more cleaning & drying power
for the best results possible.

Members of both the NCCA and TACCA.

We will move the furniture.

100% satisfaction or it's FREE.

*Call Oliver and Max Campbell
for expert help today.*

01223 832 928

www.Rothwells.biz

Introducing...

ACElectrics

Your Local Electrician

- Lighting and Power
- Electric Vehicle
Chargers
- New Consumer Units
- Testing and Inspection
- Minor Works
- Fault Finding
- Outdoor Lighting
- Extensions

A friendly, tidy and reliable
electrician ready to serve
the people of Great
Shelford. Feel free to get in
touch with any of your
electrical requirements.

**CALL ADAM
01223 89 48 48**

Email:
adam@acelectrics.live

Web:
acelectrics.live



The Great Shelford Village Charity

Formerly The Parochial Charities

Grants

We provide small grants in support of local
people and good causes

Almshouses

We provide affordable community housing for
local people - families, couples and individuals -
in housing need

Allotments

Available to rent for a nominal annual fee

We welcome donations supporting our work; see website



www.gsvc.org.uk

clerk@gsvc.org.uk

01223 842411



facebook

A Reflection.....God has no favourites!

For centuries the descendants of Abraham waited for the promised Messiah who would right all wrongs for them alone - the Chosen People. When Jesus, the Messiah, finally came to them, many were disappointed. He did not stick to the rules, He mixed and ate with tax collectors and sinners, He spoke well of the hated Samaritans, He healed the servant of a Roman centurion (Mt 8.5-13). He even went so far as to speak with a Samaritan woman (Jn 4.4-42). He simply did not stay within the established boundaries. As He left his followers He commanded them to go out into the world and preach the Good News to all nations (Mt.28.19). To law observing Jews the non Jews, the Gentiles, were 'unclean'. Entering their houses or eating with them was unthinkable, so when Peter was called to visit the home of the Roman centurion, Cornelius, he had to face up to breaking a whole list of Jewish rules, (Acts 10). Cornelius was a good, God fearing man eager to know more of Jesus. Once the embarrassments of their meeting were overcome, Peter rejoiced in his realisation that God has no favourites but accepts people from every nation who want to know God and do what is right.

Cornelius is a wonderful example of God's willingness to reach out to anyone who desires to know Him. There are no favourites, God loves the whole world, Peter, Cornelius, you, me, - everyone!

Thought for the month

The real question is not whether machines think but whether men do.

BF Skinner (Psychologist)

For more information about Great Shelford Parish Church

Vicar: Revd Dr Julie Norris

Revjulienorris@gmail.com

Parish Administrator: David Wilding

wildingdavid1@gmail.com

St. Mary's Great Shelford is a Registered Charity No 245456

Robert Halliday Tutoring

I am a gap year student with a passion for learning, who wants to help others see the same joy of learning and help them achieve the same success I have.

Tuition available in person or online – based in south Cambridgeshire for in person

GCSE – Physics, Chemistry, Biology, Maths, Further Maths

A level – Physics, Chemistry, Maths, Further Maths

Other – Science/Maths Olympiads (especially Biology)

£25 an hour, first session half price with no commitment to future sessions.

30-60 minute sessions.

Contact *roberthallidaytutor@gmail.com* or Mob 07504 999844 (text preferred)



A Harvest of gratitude and generosity

Over the last month I have seen combines at work harvesting the wheat grown in fields outside my home, followed by cultivators breaking up and preparing the land. By the time you read this I expect the fields will also have been drilled with seed ready for next year's harvest.

On a smaller scale I have harvested a good crop of soft fruits and vegetables from my allotment this year. Plums, blackcurrants and gooseberries, beans and beetroot, tomatoes and cucumbers, now safely gathered in. Apples and pears will soon all be picked and stored for the winter too. Even with the vast machines now available to farmers, it can be hard toil working the land, notwithstanding the worry and stress which goes alongside managing this around the weather, but I am grateful for the harvest produced which sustains my family over the months ahead and I am grateful for God's good provision.

For many of us today the concept of harvest as a 'gathering in' is unusual. We are often less involved in the sowing, growing and reaping process and therefore it is easier for us to take for granted the food we eat. I wonder how often we buy and eat without a thought to the work that has gone into the production and supply of those foods? How often, when we eat, do we remember and give thanks for the farmers and growers, the factory workers, the delivery drivers, the shopkeepers, who are involved in the supply chain? How often, when we eat, do we give a thought to those people who are unable to afford to feed their families? How often when we eat, do we consider those living in places around the world where drought, or floods, or wars have decimated the land resulting in failed crops; places where many people are facing starvation without the harvest on which they were dependant?

In this season of harvest I encourage us all to be those who express our gratitude for all that we have; giving thanks first and foremost to God the Provider, but also for those, and to those, who work in a variety of ways to supply us with food. And may we express our thanks not only in words but also in generosity – giving out of our abundance to those who are in need, sharing the good gifts we have received, so that others too can give thanks for a generous harvest.

May God bless you with his provision.

Diana Parr, Minister

EVENTS

Sunday Services 10.30am, all welcome

Café Church Sunday 15 October, 10.30am. Come join us for this informal time together where refreshments are served around tables during the meeting.

Open Space Sunday 22 October, 3– 4.30pm. Joint outdoor family event with St Mary's Church held behind Cara Coffee Shop.

All Hallows' Eve 31 October, 5.30– 7.30pm. Popular family event with activities, crafts and BBQ. Bookings via the church's website or by emailing administrator@shelfordfreechurch.org.uk

Community Café every Monday 10–12 noon. Come join us for tea/coffee and homemade cake.

Little Steps Toddler Group every Wednesday: 10–11.30am. Term time only. Email administrator@shelfordfreechurch.org.uk to book a place.

Tiny Toes Baby Group every Wednesday afternoon: 1.30– 3pm. Term time only. Email administrator@shelfordfreechurch.org.uk to book a place.

Margaret Cletheroe, GSFC Administrator.

ALL HALLOW'S EVE FESTIVAL



ACTIVITIES/CRAFTS/BBQ

5.30–7.30pm.

Contact administrator@shelfordfreechurch.org.uk or book directly on www.shelfordfreechurch.org.uk



Thinking of selling or
letting your property?

Our Great Shelford
team can help!

2019 ★★★★★ feefo^{co}
Gold Trusted Service Award

Call: 01223 800860
or Email: shelford@rah.co.uk

LAY ELECTRICAL Sales and Repairs

*Washing
Machines,
Vacuum
Cleaners,
TV, Video,
etc.*



66 High Street
Great Shelford
01223 842488



TIM PHILLIPS & Co Ltd Accountants

Independent, specialist service for:

**Small Business
Self Assessment
Personal Taxation**

FREE initial consultation – NO OBLIGATION
Easy to find us – map on website. **FREE PARKING**

Copley Hill Business Park
Off A1307 between Wandlebury and Babraham

01223 830044

info@TPaccounts.co.uk TPaccounts.co.uk

SHELFORD SCHOOL

Autumn Days. It's a week or two into the new school year as I write this, and as always, it's amazing how quickly school feels 'normal' again after all the differing routines, irregular bedtimes etc of the summer. Despite needing time to recreate ourselves over the holidays, most of us thrive on the rhythm of school life. It has been a delight to see our new Reception pupils settle in so well, ably aided by our Year 6 buddies. It's always good too to hear of our 'alumni', whether they be at Sawston Village College, other secondary schools, or off to further education; it was particularly pleasing this week to hear of a former Year 6 buddy, off to train as a primary school teacher. The power of a strong role model reaches far!

We also welcome the following staff to our team: Miss Chapman and Miss Westley as Teaching Assistants and Mrs Sheppard, Mrs Spencer and Miss Palmer as Class Teachers. Education is all about change and so as we said goodbye to our summer leavers and welcomed our autumn arrivals, so now we look to recruit some new staff as house moves, retirement and babies mean we are advertising for the roles of Finance Secretary and Office Manager, Midday Supervisor and Caretaker. We will also shortly be advertising for a Maternity Cover teaching role, so if you, or anyone you know, is considering a career opportunity, do please get in touch with the school.

An impressive range of extra-curricular activities is now in full swing, with orchestra, choir, art, modern languages, dance, multi-sports, triathlon and tournaments clubs on offer. As autumn draws on, we look forward to our harvest celebration, where families are welcomed into St Mary's Church along with the children.

We were pleased recently to receive a second certificate for being in the top 10% of Fisher Family Trust (an education charity) schools in England for attendance. We were also thrilled to receive a letter from an ex-pupil who had noted our previous award and was reminded of the medal her father-in-law, also an ex-Shelford pupil, was awarded in 1912 for 'Attendance, good conduct and punctuality' while at the school. She has offered to donate the medal to the school and we have gladly accepted this kind offer, looking forward to adding this historical artefact, with a record of its story to our school history collection.

Liz Jenkin, Local Authority Governor

Managing Your Property Renovations

Rebecca Orde LTD

I help clients in Cambridge and surrounding areas renovate their homes. I will guide you through the whole process from concept to completion, taking away all the stress that comes with undertaking a building project.



☎ 01223 782125 🌐 www.rebeccaorde.com ✉ info@rebeccaorde.com

SIMON SPARROW

**CARPENTER
AND JOINER**

22 Woollards Lane
Great Shelford
Cambridge CB22 5LZ
Tel: 01223 842380



D Hatter The Gas Specialist



Carbon Monoxide Kills
75% of last year's poisonings
were due to lack of servicing!
.....

D Hatter, specialist in servicing,
repairs and installation of
DOMESTIC gas appliances
including boilers, fires
and cookers.

.....
Improve efficiency, save fuel,
give your central heating
system a new lease of life,
have it POWER FLUSHED.

t: 01223 844866
m: 07747 444 435
e: davidhatter1@aol.com
w: thegaspecialistltd.co.uk



angli-EAR
Hearing & Tinnitus Solutions

Hearing services

Our services include:

- Diagnostic testing
- Hearing aids
- Tinnitus treatment
- Earwax removal
- Cochlear implants
- Paediatric care
- Balance & Vestibular



BOOK YOUR
FREE
EAR HEALTH
CHECK TODAY



Audiology House, 15 Woollards Lane,
Great Shelford, Cambridge CB22 5LZ

01223 661 399 • www.angliarhearing.co.uk

GREAT SHELFORD LIBRARY

Events in October

Black History month

We are supporting The Reading Agency's '**Mark my Words**' campaign with a collection of new books to celebrate black authors.

Friends of Great Shelford Library will be holding their **Annual Book Sale** (see page 26) from Monday 2 October to Saturday 7 October, to celebrate **Libraries Week**. The theme this year is Sustainability and Climate Change. What better way to support our environment than by buying used books and supporting your library in the process? We will be having a Special Green Display during Libraries Week, offering customers the opportunity to comment on books they would recommend on subjects relating to Green Issues.

Story and Rhyme Time Tuesday 3 October and Tuesday 17 October at 10.30am. For children aged 0–4 years. Come and enjoy stories and rhymes led by our wonderful volunteers. This is a free drop in event. Parents/carers please stay with your children.

Author Talk Wednesday 4 October 2–3.00pm. Local author, Rachael Mellor talks about her new book, *The Box with the Sunflower Clasp*, a story of family secrets and a young Jewish woman's escape from 1930's Vienna to Shanghai. Tickets £3. Please book in advance in the library or via Cambourne.referral@cambridgeshire.gov.uk

Engage Talk by Tony Kirby. Why does Cambridge look like it does? Wednesday 18 October 2–3.30pm. A donation of £2 is appreciated. Please stay for a drink after the talk. Please pre book in the library or via Cambourne.referral@cambridgeshire.gov.uk

Lego and Duplo event Wednesday 25 October 2–3.30pm, £2 per child.

Build your own Lego and Duplo creations. Suitable for ages 2–10. Please pre book in the library or via Cambourne.referral@cambridgeshire.gov.uk

Children must be accompanied by an adult during events.

Contact details

Phone: 0345 045 5225. Email: Cambourne.referral@cambridgeshire.gov.uk

Web: www.cambridgeshire.gov.uk Opening hours see page 24

Recruitment Specialists
for the Built Environment



Jobs & Career advice in:

Technical Moves

- Land, Development & Property
- Surveying & Project Management
- Architecture & Planning
- Civil & Structural Engineering
- Executive Search, Construction, MEP

01223 845333

technicalmoves.com

Great Shelford based since 2012

DAVID FOX
CARPENTRY

***Purpose-made
joinery and fitted
furniture***

Unit 4 Granta Terrace
Stapleford
Cambridge

01223 845143

FOOT PROBLEMS?

Celia Kenney

(HCPC Registered Podiatrist)

Call 07939 227195

(For home appointments)

Treatments cover:

Nail cutting and other nail
conditions

Corn and callus
removal/reduction

Fungal infections and
athletes foot

Verrucae/warts

The Beechwood Practice
Cambridge CB2 1NT

Call: **01223 315541**

Bespoke
Curtains
& **Blinds**

01223 836498



suecrowcurtains.com

CAMBRIDGE

WINDOW CLEANING

Working in & around Cambridge

- Exterior & Interior Windows
- Conservatory Roofs
- Gutter Cleaning
- Pressure Cleaning,
Paving, Patios & Drives
- Tile Roof Cleaning &
Moss Removal



Tel. **07942780601**

Email. **info@cambridgewindowcleaning.com**



2G3S

Here are some forthcoming dates for your diary; we hope to see you at some of them.

Dr Bike repairs will continue at the Slaughterhouse in Stapleford on Tuesday afternoons, 3pm to 5.30pm. Come and have your bike checked over and small repairs done on site for a small donation (see photo of

the Back to School session held in early September).

South Cambs Organic Gardening Group meets on Monday 16 October at Cox's Close, Stapleford, at 7pm.

Nature Walk on Saturday 21 October at 2pm, at the Wale Recreation Ground in Little Shelford, with naturalist John O'Boyle. Just turn up, meet at 2pm at the entrance gate opposite 46 Whittlesford Road. The walk is at your own risk, and do wear suitable clothes and footwear.

Cycle ride is on Monday 16 October. Start at 10am at Stapleford Pavilion.

Booking essential, at greener@sawston.org.

Film Screening on Sunday 15 October at 7pm, at Whittlesford Memorial Hall, Mill Lane, CB22 4NE (with Eco Whittlesford). There will be a film from the 'Local Futures' organisation: 'Planet Local: a Quiet Revolution'. This 50 minute film celebrates the power of community and gives voice to a growing number of people building a more beautiful world. Featuring grassroots activists from every continent alongside internationally known figures like Noam Chomsky, Vandana Shiva, Naomi Klein, Jane Goodall, Gabor Maté and Helena Norberg-Hodge – all of them bringing inspiration and clarity to a world full of dark news. We hope you will stay for an informal discussion after the film. Refreshments provided. There is no charge but donations are welcome.

Community Energy Event on Sunday 22 October, 2pm to 5pm, again at Whittlesford Memorial Hall. Cambridge Carbon Footprint, 2G3S and Haslingfield and Harlton Eco Group have joined forces for an exciting event - Reimagining Community Energy Together. This in-person gathering is a fantastic opportunity to connect with like-minded individuals who share a passion for sustainable energy solutions.

This event will focus on community energy - what it is, why it's a good thing, who is working on it and how your community can have a go.





THE FULBOURN CAT SITTING COMPANY

Operating in the Cambridge area, we offer in-home cat sitting based on your cat's individual needs, giving your feline companion safety, comfort, and familiarity of their own surroundings.

Our aim is to provide professional, reliable, and loving care.

We are fully insured, trained, DBS-checked and NarpsUK-registered.

E-mail: info@thefulbourncatsittingcompany.co.uk

Tel: Laura 07742969374 | Chloe 07704207560

Web: www.thefulbourncatsittingcompany.co.uk



TM Electrical SERVICES

The Complete Electrical Service

Local - Experienced - Competitive

E: enquiries@tm-electrical.com

www.tm-electrical.com

38 Cheddars Lane, Cambridge CB5 8LD

Tel: 01223 441111

FREE ESTIMATES



Carpet, Upholstery, Fine Rugs, Stone Floor Cleaning & Wood Sanding

"We were very satisfied with the technician and the way the carpets were cleaned. He was very polite and phoned to say he was coming and again later to let us know he would be with us shortly. Thank you for your services." Mrs Burling

Call today
"01223 790792"



Please
quote
Great
Shelford
Mag

Art of Clean, Denny Lodge Business
Park, Ely Road, CB25 9PH
www.artofclean.co.uk

THE GOG

FARM SHOP
ESTD · CAMBRIDGE · 1919

BUTCHERY · DELICATESSEN · GROCERY · CAFÉ

WWW.THEGOG.COM

It includes expert speakers and stalls from Octopus Energy's community energy project, Yunity, Cambridgeshire County Council's Head of Energy Services, Eithne George, Transition Cambridge and local people at various stages of actual community energy projects, including solar, wind and heat networks. Together we will explore how communities can work together to develop their own renewable community energy generation schemes.

Community energy programmes often start with reducing energy needs in the first place, so we'll also have local retrofitting experts on hand who can answer your questions about transitioning to comfortable, cost effective homes that are good for us and the planet.

Expect engaging discussions, inspiring talks and networking opportunities with experts in the field. Whether you're an energy enthusiast, a community leader, or simply curious about green initiatives, this event is for you!

Book your free tickets here: eventbrite.com/e/reimagining-community-energy-together-tickets-710219675167

More details of both events in next month's magazine, or see our website.

If you are interested in green matters and the environment at all levels (individual, local, national, international), send an email to greengroupssss@gmail.com to sign up for our quarterly newsletter, or to get more information about our meetings. We are a friendly group and welcome anyone who wants to come along to one of our events or to find out more about how we can live more sustainably. Also see our Facebook page and our website (type 2G3S into Google and you will find us).

Helen Hale

MAKE YOUR MONEY MATTER

From 2G3S' latest newsletter

Did you know that making your pension 'green' is 21 times more effective than giving up flying, becoming a vegetarian, and switching to a renewable energy provider combined, say the campaign group Make My Money Matter. There's a whopping three trillion pounds invested on our behalf in UK pensions, much of which is funding fossil fuels and driving deforestation. Pension funds financially support almost every sector, including arms and tobacco, making us unintentional investors in the practices we condemn. This is our money, so what can we do? For starters, we can contact our current provider and ask them to go green. There's a pre-written email on the Make My Money Matter website that gets sent directly to your particular pension provider and requests that they use their power to end fossil fuel expansion, tackle deforestation in their portfolio and invest more in climate solutions.



**travel
counsellors**

Check in time?
Whenever you need us.

24/7 support no matter where you are. At travel counsellors we're all about you. Your needs, wants and aspirations for far-flung destinations - coupled with personal service beyond compare.

Cheryl Harradine
TRAVEL COUNSELLOR

01223 842670 / 07742272131
cherylh@travelcounsellors.com
travelcounsellors.com/cheryl.harradine

★ Trustpilot ★★★★★



WATERLILIES

SKIN CLINIC • BEAUTY

Call 01223 844700 Book online at www.waterlilies.org.uk

2d Dolphin Way, Off London Road, Stapleford, CB22



QUALITY FLOORING SUPPLY,
INSTALLATION & AFTERCARE

**Specialists in
Wood Flooring,
Carpets & Vinyl
Flooring Solutions**

"We've had a vinyl floor fitted in a loft bedroom. Sam and Nigel were excellent throughout. The whole experience was made very stress free due to their professionalism and the floor looks amazing. I would not hesitate to recommend The Art of Flooring."

Juliet Mills, Cambridge

01223 755 802

Please quote Great Shelford Mag

Best of houzz 2020 SERVICE	Best of houzz 2020 DESIGN
--	---

141 Milton Road Cambridge CB4 1XE
www.ArtOfFlooring.co.uk



THE PLOUGH
2 HIGH STREET
GREAT SHELFORD
CAMBRIDGE CB22 5EH
01223 847986

**Live Sports~Pool Table~Darts
Cask Ales~Patio Garden**

**Food Vans
Mon-Wed 5pm to 8pm
Home Cooked Food
Thurs-Sat**

 **Find us on Facebook**

We can also ask our employers to move our money into sustainable pensions and fossil fuel free investments.

Nest, the UK's largest workplace pensions provider, has an Ethical Fund which invests with a view to how people and the planet are treated and along with Cushon, who have the world's first Net Zero pension, they aim to develop new forestry investment strategies to address climate change pressures.

If you have a private pension, or are looking to start one, PensionBee's Sustainable Investing prioritises funding companies that consider their long term impact on people and the environment. Their Fossil Fuel Free Plan is one of the UK's first mainstream private pensions to completely exclude companies with proven or probable reserves in oil, gas or coal, tobacco companies, manufacturers of controversial weapons and persistent violators of the UN Global Compact, whilst also investing more of your money in companies that are aligned with the Paris Agreement. If you use a financial adviser, ask him/her about Environmental Social and Governance (ESG) funds.

And this doesn't mean your investments won't grow. Quite the contrary. Peter Michaelis, head of sustainable investment at Liontrust, said, 'We believe sustainable companies have better growth prospects and are more resilient than businesses not prioritising environmental, social and governance issues. These advantages remain underappreciated by the wider market.'

WI

After our break over the summer, we welcomed Honor Ridout to our September meeting. Honor spoke eloquently and with great knowledge about the history of the Cambridge Great Fair, known in the past as the Stourbridge Common Fair, which has been in existence since Medieval times.

This vast fair, attracted hundreds of people from many parts of the country, selling their wares to the ordinary folks and even Royalty. The fair would usually begin around harvest time, selling wool, which was shipped to Spain and Portugal, grains, cloth made from linen and sheep's wool, basketry, pottery and glass wares, silks, pewter, china, cheeses and fish and many meats that would have been smoked to preserve them. Coal and wood were also sold to enable people to stock up for the winter months.






Thank you Honor for a most interesting talk, on a very hot evening.

Our next WI meeting will take place on October 5 at St Mary's Community Hall. Everyone is welcome.

Rosemary Livings President

DIARY OCTOBER 2023

Date	Event	Time	Place
2	Library Annual Book Sale (p26)		
5	WI meeting (p23)	7pm	St Mary's Comm'ty Hall
14	Autumn Gala (p28)		GS Memorial Hall
18	Engage Talk -Tony Kirby (p17)	2pm	GS Library
5,12,19,26	Carpet Bowls (every Thursday)		
25	Lego & Duplo Event (p17)	2pm	GS Library
28	Village Market		
31	All Hallow's Eve (p13)	5.30pm	Free Church
Wednesdays: Country Market 9–11.30am, 4, 11, 18, 25			

	BIN COLLECTIONS Black bins Tuesday 3, Tuesday 17 October Blue and Green bins Tuesday 10, Tuesday 24 October
	POST BOXES Coppice Avenue, Mill Court (Hinton Way), Library, Old Vicarage, Church St, High Green bus stop, Stonehill Road, Macaulay Avenue. According to Post Office staff, the first collection from post boxes is at 9am (7am on Saturdays) and there are subsequent collections later. The latest collection is from the Post Office at 4.45pm.
 	POST OFFICE The Post Office is at Kash Stores, 35 Hinton Way. Open Monday–Friday 9am–5.30pm, Saturday 9am–1pm. Items that Royal Mail is unable to deliver (too big, signature required, etc) will be returned to the Royal Mail Depot in Clifton Road for collection, or redelivery arrangements made.
	LIBRARY Monday 3–7, Tuesday 10–1 & 2–5, Wednesday 10–1, Thursday closed, Friday 10–1 & 2–6, Saturday 10–1.



GREAT SHELFORD COUNTRY MARKET

When we open the doors of the Memorial Hall at 9 am, it is always a great joy and encouragement to find a queue of customers waiting for opening time. Please keep coming, do your shopping and have coffee and a cookie with friends. Our garden section has had an amazing few weeks. After a difficult growing season and our producers indicating they didn't expect good crops, they have taken us by surprise with the spectacular garden flowers, salad crops and green vegetables. We are now moving into the hard fruit season with several varieties of apples coming into the Market. All our produce is home grown and freshly picked. In fact, for all our bakers and growers, every Tuesday is a long day in the kitchen or in the garden.

Our crafters are also busy people. There's a story behind every handcrafted item. Our crafters can tell you where their materials are sourced and all about the techniques involved in the creation process. They love to chat to customers, help them find the perfect item, often a gift for someone, or just discuss our crafting process.

It is always a pleasure to take orders and also deliver to older customers who cannot get to the market. By definition, we are a social co-operative enterprise. To order, please phone 01223 843946 or email dorothy@woodlandsroad.plus.com

For the latest market news and many photographs of so many products, follow us on Facebook: <https://www.facebook.com/gtshelfordmarket> and we'd be so pleased if you would like to join us as a producer. Just come and find out more by talking to us.

Dorothy Doel

See you on Wednesdays from 9am to 11.30am in the Memorial Hall.

NOTE

The *Great Shelford Village News* is published by the Editorial Committee, whose members are delighted to receive the many regular and occasional contributions that make it all possible. The Committee accepts such contributions in good faith, but cannot take responsibility for the accuracy of information contained therein. The views expressed are those of the contributors and do not necessarily reflect those of the Editorial Committee. The Committee, of necessity, reserves the right to amend or reject items, for a variety of reasons. In these cases (unless the changes are minor), every reasonable effort will be made to contact the contributor to obtain agreement

Editorial Committee

Libraries Week



FRIENDS OF
Great Shelford
LIBRARY

Friends of Great Shelford Library are collecting books for a **BOOK SALE**. Any donations in advance, of books, (fiction, non-fiction, adult or children) either new or in excellent condition, would be welcomed at the library desk.

They will be sold in Great Shelford library during Libraries Week (2 - 8 October) to raise vital funds to support the library.

Shelford & Stapleford Scout Group

*Cash
only!*

Jumble Sale & Auction

Sunday 26 November 2023, 2 - 4pm

Great Shelford Memorial Hall

Jumble can be taken to the hall from 10 – 12 noon on 26 November

We regret that we cannot accept the following:

- Mains electrical goods
- Furniture / furnishings that do not meet fire safety regulations

Cambridge Flower Club

NAFAS affiliated.

We meet at the Memorial Hall, Mill Lane, Whittlesford CB22 4NE. Third Thursday evenings.

Refreshments from 6.45pm. Demonstration at 7.15pm followed by a raffle.

New members welcome! Visitors pay £8.00.

September 21st

In-house demonstrations on theme 'Wider Cambridge'

October 19th

NAFAS Demonstrator, Vicki Hease - 'Vintage Affair'

November 16th

Christmas Open Meeting - 'The Magic of Christmas'

National Demonstrator LORENA DYER

6.15pm Seasonal refreshments, stalls & raffle

7.15pm Flower Demonstration. Tickets: £12.

Phone Freda Orgee on 01223 891464 or email fredaorgee@gmail.com

See 'The Cambridge Flower Club' on Facebook

Great Shelford Mobile Warden Scheme
(Registered Charity 1055515)

We are a local charity that helps support the older residents of Great Shelford village to remain living independently in their own home. Through our phone calls and visits we aim to reduce social isolation and loneliness.

We can provide:

- Reassurance and security through daily phone calls and regular visits.
- Additional visits in the event of illness.
- Assistance with doctors' appointments and accessing local information.
- Help with paperwork and prescriptions, visiting the bank/post office, changing a light bulb and picking up shopping in the village.



For further information visit our website <http://www.shelfordwardenscheme.org>

Jenny David (Chair) 07764615524 jennykmf@yahoo.co.uk

Claire Smith (Warden) 07811676991 saurus1960@gmail.com



Mrs Rosemary Rigge
Grad Dip Phys MCSP Reg. HCPC
Chartered Physiotherapist

TREATMENT ROOMS:
26 Mingle Lane, Stapleford,
Cambridge CB22 5SY

or HOME VISITS

Tel: 01223 844091

Mobile: 07958 708728

Reg. BUPA, AXA, etc.

DUXFORD BUILDING & LANDSCAPE SERVICES

All work considered from:

- Hard Landscaping
- Brickwork
- Structural Alterations
- Carpentry
- All types of Building Works from Extensions to Conversions



D A Rayment

Home: 01223 837645

Mobile: 07958 774360

Email: duxfordbuilding@btinternet.com

Web: www.duxfordbuildingandlandscapes.com



*Award winning free house & restaurant
in the heart of the village.*

☎ 01223 503 402

@ hello@threehorseshoes-pub.com

🌐 www.threehorseshoes-pub.com

NB HORTICULTURE & CAMBRIDGE HEDGES

All types of garden work
& landscaping

Hedge & Shrub Supplier

www.cambridgehedges.co.uk

Mr N Barber BSc RHS Cert

Consultant Member of the Gardeners Guild

109 Cambridge Road
Great Shelford, CB22 5JJ

07789 564042

01223 977306



Shelford Autumn GALA

SATURDAY 14TH OCTOBER 2023

GREAT SHELFORD MEMORIAL HALL

6.30PM TIL LATE

JOIN US FOR:

- A night of good food, good music and great vibes.
- 3 course meal provided by Hall & Co Event Design
- Doors open at 6.30pm
- Dinner served at 7.15pm
- Live performances from Special Groove and Gig-L
- Dress Code: Smart/Elegant
- Tickets*: £50 each when booked as a table of 10 or £55 each if purchased as an individual**
- Funds raised will be donated to Cambridge Playscheme and Great Shelford Village Charity

(* Ticket price includes: Dinner, a drink on entry and one free raffle ticket)

** Or not as part of a table of 10 people

GREAT
SHELFORD
PARISH COUNCIL



Details: https://www.greatshelfordparishcouncil.gov.uk/council_events/great-shelford-autumn-gala/

Gavin Langford Architects
www.gavinlangfordarchitects.com



RIBA 
 Chartered Practice

The Great Shelford Village News is unable to check or verify the warranties or representation made by their advertisers and must therefore exclude any liability whatsoever arising from any advertisement in the News magazine, nor do any statements necessarily accord with the views of the editors.

Great Shelford
Solicitors



DAVIES
 solicitors advocates & mediators

- Family
- Divorce & Separation
- Children
- Civil Disputes
- Wills & Probate
- Estate & Tax Planning
- Powers of Attorney
- Court of Protection

For a quality and attentive service

Please Call: **01223 842211**

www.daviessolicitors.co.uk law@daviessolicitors.co.uk
 30 Woolards Lane, Great Shelford, Cambridge CB22 5LZ

Free and easy parking

MegaStorage

SAFE & SECURE SELF STORAGE

Self Storage in Sawston

Clean, Dry & Secure, 24/7 Access

 **ssa** self storage association United Kingdom

www.MegaStorage.co.uk

01223 833 777



GUIDING

Great news - but we still need adult volunteers!

Rather wonderfully, two experienced Guide leaders moved into the local area over the summer and are now running Shelford Guides!

Huge thanks to them both.



But ... we still need more volunteers locally. Our greatest need at the moment is for an adult volunteer to help every week at Trumpington Rainbows. Rainbows is for 4-7 year old girls and meetings are lots of fun! Please find out more about volunteering with Girlguiding and register

at: <https://go.girlguiding.org.uk/join-us/join-as-volunteer/>

or get in touch with any questions at all at shelforddistrict@gmail.com

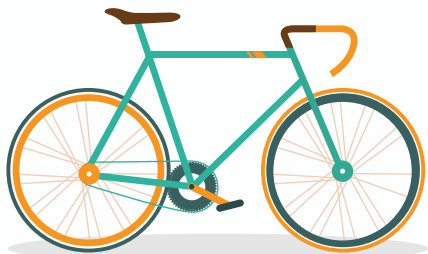
Thank you!

Lisa MacGregor

BIKE SALE

SATURDAY 4 NOVEMBER

Great Shelford Memorial Hall 8am to 12 noon



A great selection of women's, men's & kid's bikes, scooters etc all given a full health check.

To sell a bike in the sale contact us on **shelford.bike.sale@gmail.com**

Run by and raising funds for the
Shelford School PTA
Charity Number 1110813

Care For Trees



Qualified
Reliable
Insured
Affordable

For a free quote call **Mike Wallman** on 01223 846390 or email info@carefortrees.co.uk

FAMILY **Barker Bros** BUTCHERS

EST. 1843



Packaging
Free
Vegetables
now on
Sale

QUALITY, LOCAL MEAT FOR EVERYDAY

43 High Street, Great Shelford

Tel: 01223 843292 www.barkerbrosbutchers.co.uk

J M R Electrical



**Electrical
Contractor**



All Domestic, Industrial &
Commercial work undertaken

21 Ashen Green, Great Shelford, Cambridge

Email: jmr.electrical@hotmail.com

Tel: (01223) 844680 Mobile: 07766 68 38 86

QUALITY BESPOKE PICTURE FRAMERS

**SIMON ROBINSON
& SON**

Professional, Friendly Service
Over 25 years' experience

Wide Selection of Frames
Conservation Materials Used
UV Protective Invisible Glass

Artwork/Photography
Needlework/Tapestry
Oil Paintings and
Canvases Stretched
Unusual Objects Framed
Made to Measure Mirrors
Limited Edition Prints Available

Tel. 01223 873123

Opening Hours:
Tues-Fri. - 9am-5.30pm
(Saturday - By Appointment)

www.robinsonframes.co.uk
lester@robinsonframes.co.uk

**STUDIO 6, PENN FARM,
HARSTON RD,
HASLINGFIELD, CAMBRIDGE
CB23 1JZ
(AMPLE PARKING)**

HEATWAVE SERVICES



- Qualified to service and repair gas, oil and LPG boilers
- Installation of new central heating systems, unvented hot water cylinders
- Landlord Certificates
- Worcester Bosch Accredited Installer

Whittlesford based company for all your heating and hot water requirements

Tel: 01223 837774 or 07795 304013

Email: heatwaveservices@btconnect.com

15 Maynards, Whittlesford, Cambridge, CB22 4PN

BETTER WAYS FOR BUSWAYS



GCP pauses busway plans but development is far from dead in the water

Thank you to everyone who has actively supported our case and for the donations that are making such a difference. Read on to find out why our campaigning and fundraising continues to be vital to protecting our green belt from

unnecessary development.

Breaking news from late August was that Greater Cambridge Partnership (GCP) officers recommended that they should press the pause button on plans for the 8km Cambridge South East Transport (CSET) busway that is due to run across countryside from Babraham to the Biomedical Campus. Inflation means that CSET costs have risen to £160m and consequently the GCP no longer has sufficient funds to pursue all of its projects.

This is certainly welcome news if we are to save our countryside and green belt from development. However, the scheme is not yet dead and the GCP is awaiting further government funding in order to proceed. It is important to note that the overall strategy is supported by S106 payments derived from development. These planning obligations are legal agreements made between local authorities and developers which seek to address issues that new developments may place on local infrastructure (such as the transport network). Consequently, developers of our green belt could be required to contribute financially to the busway as a condition of planning permission. We therefore fully expect that the GCP will continue its application for a Transport and Works Act Order to secure the route across our local green belt.

We certainly do not believe that, in the face of unabating congestion, the GCP will just leave the situation as-is after five years of consultation and planning. BW4B's position is that improving connectivity into Addenbrooke's is urgent and that the GCP should proceed with our alternative and more affordable route without delay. But will rationality prevail?!

The GCP Assembly and Executive Board are scheduled to discuss their options during September, so by the time you read this there may be more information in the public domain. BW4B has already presented Councillors with an alternative transport scheme that requires only a short busway from Hinton Way roundabout into the Cambridge Biomedical Campus and an inbound bus lane along the A1307. This was actually one of the options the GCP consulted on back in 2018! It would be 60% cheaper and avoid the devastating environmental impact of building three concrete bridges over our chalk

streams. Over 4,500 people have signed the petition supporting this alternative route.

We will be holding a public meeting on Monday 9 October at 7:30pm in Stapleford Jubilee Pavilion (Gog Magog Way, CB22 5BQ) when we will present an update on the GCP's plans. In the meantime, do visit <https://www.bw4b.org/gcp-cset-announcement> for more detail.

Please sign our petition if you haven't already and send this link to anyone else you can think of: <https://www.change.org/p/save-south-east-cambridge-countryside>. And if you have any questions, do email us at hello@bw4b.org.

Better Ways for Busways!

Howard Kettel

ANTHONY BROWNE

An extract from his weekly bulletin

I drafted and sent out a press release on the South Cambs District Council's disastrous 4-day week, using data from a Freedom of Information request to show that it had increased employment costs rather than reducing them. The council has claimed the 4-day week experiment had saved £300,000 in fees for agency staff in the first three months, but its own data clearly shows it has increased by nearly £200,000. The council is engaged in one of the most egregious examples of policy based evidence making I have ever come across: they have decided the policy and are now torturing the evidence to justify it. The Liberal Democrats last week rejected a demand by the national government that they stop the trial, on the basis it was a waste of rate payers' money and had led to worse services. I did an interview on the issue for Radio Cambridgeshire.

Following the Liberal Democrats and Labour pulling support for their own congestion charge, which I have campaigned against, I issued statements welcoming the development but asking them to commit to not reintroducing it after the general election. The Greater Cambridge Partnership has wasted over £150m on not delivering transport projects. I met with local Conservative political leaders, including South East Cambridgeshire MP, Lucy Frazer, to discuss next steps on improving transport in and around Cambridge. Along with other regional MPs and ministers, I attended the annual dinner of the Eastern Powerhouse, a group committed to promoting economic development in the East of England.

I held a surgery in the empty South Cambridgeshire Council Office in Cambourne, doing what I can to help constituents with their problems and spoke to students about working in politics. I would not recommend it as a career for the lazy.

Anthony Browne

COMPUTER PROBLEMS?**Call visualSilicon**

Mike Nettleton has retired and all of the operations of Eagle-Analysis have been transferred to visualSilicon.

We are a friendly team of computer experts local to Cambridge who have many years of experience and are well placed to support businesses and the local community.

We will be looking after your IT issues from 1 April 2023 and are available to help at short notice.

Read more about us at <https://visualSilicon.com/flyer.pdf>

Call visualSilicon on free landline 0800 7720 720

or visit <https://IT.visualSilicon.com>

SOPHOS
Silver Partner



REGISTERED
PARTNER

Ontrack® Data Recovery
Authorized Partners

**The Country Store**

*Pet, Equine, Smallholder,
Shooting supplies,
Country clothing,
Wild bird food*

Unit 12a, Sawston Park,
Pampisford, Cambridge

CB22 3EE

www.thecountrystore.co.uk

Tel 01223 837977

D.L.M. AUTOS

63a Orchard Road, Great Shelford CB22 5AA

MOT - SERVICE - REPAIR

01223 844828

www.dlmautos.co.uk



FIRST CARE HOMES

WHERE CARE COMES FIRST

The Cambridgeshire Care Home

Situated in Great Shelford, the premier choice for a boutique care home in historic Cambridge. We provide unrivalled care using state-of-the-art technology and offer Dementia, Nursing and Residential care with a fully inclusive service package.

To enquire or book a showround call 01223 551 200 and ask for Yvonne Quigley, Customer Relations Manager.

PLAYSCAPE UPDATE AND FUN RUN

The Finishing Straight! What a great September we've had! Not only did we have the biggest turn out ever for the Shelford Fun Run (plus the fastest finish), we also learned that our grant application to build the Wheelscape was successful. Woohoo!

Wheelscape Thanks to a large grant from the FCC community action fund, plus over £20k fundraised by Great Shelford Playscape, we are delighted that Great Shelford Parish Council is now in a position to build this latest phase of the adopted Master Plan. The Wheelscape will adjoin the end of the Playscape, hugging the tennis courts, providing an approachable place for all wheeled sports. This will complete the envisaged inclusive play hub on the rec.

The start date is currently unknown, but we expect work to be completed by next spring. Yippee!

Shelford Fun Run 2023: What a scorcher!

A sell out, it was our most successful (and hottest!) Fun Run to date, with twins Matthew and Isaac (pic, back page) making it a blistering one, two home in 15:27.6 and 15:28.7. So many commented on the wonderful atmosphere and we were delighted to hear that some kind residents left sprinklers on for runners to cool off under, which was a lovely touch.

New this year, the inclusive sensory 1k by Power2Inspire went down really well and we are very grateful to all our sponsors who cover the costs of putting on an official closed roads race and to all our volunteers who help set up and then marshal the course: we couldn't do this without you all!



"...all done with great enthusiasm...all the volunteers did a wonderful job in setting up the [race] village and ensuring all the runners had a great experience. Very well done to everyone this morning." Race adjudicator.

Many thanks also to Cara coffee for opening and donating all proceeds from that morning. Final fundraising total will be shared next month.

And finally... We love how this event is such an important part of the village calendar, but our Race director, Holly Barr would like a year off! We are therefore on the lookout for more volunteers to join the Fun Run committee. It's a well-oiled machine, with lots of systems in place, but many hands make light work. Please consider volunteering!

Eleanor McCrone info@shelfordplayscape.org

ARTHUR RANK

Take a tour around your local Hospice



See behind the doors of Arthur Rank Hospice Charity at Shelford Bottom in Cambridge by joining them for their next Open Day on Friday 13 October 2023 (more dates to follow). This free event starts

with light refreshments followed by a brief talk and a guided tour where you will have a chance to meet the staff, learn about the services they provide and find out more about the work of the Charity. Take this opportunity to look around the award winning building, find out more about the people who work or volunteer there, how to hire the Education and Conference Centre for your business or more about the delicious cakes in the Bistro. Visit arhc.org.uk/opendays or call 01223 675888 for more information. If you are unable to attend a face to face tour the Charity has added a useful virtual tour to their website arhc.org.uk/hospicevirtualtour

Get your local scenes Charity Christmas cards before it's too late

Order your local scene Christmas cards to support Arthur Rank Hospice Charity before they sell out. There are many to choose from, including the River Cam, The Round Church, Parker's Piece, Ely, Wisbech and lots more. The full collection can be viewed on their website arhc.org.uk/shop. The cards are beautiful in appearance and also in sentiment as every pack of cards sold helps fund patient care.

Pick up preloved items at bargain prices

Did you know that Arthur Rank Hospice Charity now has seven retail premises? They have shops in Burleigh Street, Mill Road and Regent Street in Cambridge, Cottenham and Great Shelford, a Retail Hub and an adjacent recently opened Retail Outlet in Pampisford/Sawston, where you can find bargain clothes, bric-a-brac and furniture!

Do your bit for your local community (and the planet) and recycle/upcycle by donating or purchasing preloved items.

Please visit arhc.org.uk/shops for more information.

They are also looking for volunteers to help in the shops, so if you can help please visit arhc.org.uk/volunteer or email volunteer@arhc.org.uk or telephone 01223 675872.

TRADITIONAL RESTORATIONS

**A FRIENDLY LOCAL SERVICE
FOR ALL TYPES OF ANTIQUE &
MODERN FURNITURE**

A complete restoration service:

- All types of furniture repairs
- Traditional French polishing
- Hard-wearing, high-quality lacquer finishes
- A comprehensive re-upholstery service

Over 20 years working in the local area
Free estimates & advice given on all work

JONATHAN PORTER

**5 BABRAHAM ROAD, SAWSTON, CAMBRIDGE CB22 3DQ
TEL 01223 835515 MOB 07932 611184**



STEVE the PLUMBER

Steve the Plumber
is a local plumber
with a friendly,
helpful and reliable
service.

Small or larger jobs
undertaken.
Competitive rates.

Please call 07803922517

or email
steve_the_plumber@me.com



Neaves Electrical Ltd

All aspects of electrical
work undertaken.

Installation, maintenance
and repairs.

We now install electric
car charging points.



www.neaveselectrical.co.uk

Tel: 01223 290 956

Mobile: 07702 280 687



Free Estimates & Advice

Block paving driveways, patios & paths
All landscaping services
Self-sufficient with own machinery
Over 10 years' experience

Free warranties:

- 5 years on workmanship
- 10 years for materials
- Manufacturers' guarantees

BRADSTONE
Assured



amsbuildingandlandscaping.co.uk

01638 721893 info@amsbuildingandlandscaping.co.uk

ANGLIA TREE CARE

A O'Connor

Tel: 01223 424454

23 King Street
Cambridge CB1 1LH

*Tree surgery
Stump grinding
Hedge maintenance
Fully qualified & insured*

*All work carried out to British
Standard BS3998
Member of the Guild of
Master Craftsmen*



www.angliatreecare.co.uk Email: info@angliatreecare.co.uk

OLD NEWS**Extracts from The Great Shelford Chronicle 1774–1868**

Compiled and re-published by Anne George, Glynis Trundle

Margaret Ward and Alan Bullwinkle, 1993

22 October 1842

GROSS ASSAULT – Jane Powter was charged by Sarah Rollinson or Rawlinson, with having grossly assaulted her on the 10th of October and used her shameful. It appeared that the greatest miracle which had been heard of for many a day, was her escape with life from the hands of the defendant. She deposed that on various previous occasions, the defendant had solemnly sworn to “brain her” and “do it for her” and, on the day in question, the complainant was running after the defendant’s little boy to reward him for some iniquities perpetrated towards herself, when the defendant “made no more to do, but up with her fist and hit me this unlucky blow” – (pointing to an eye that evidenced the receipt of a severe thump of some sort). “I was unsensed at once.” Defendant followed up this attack by tearing complainant’s hair, pulling her cap to pieces, and rending her gown; and finally gave fierce utterance to a determination to “fight her.”

In this outrage defendant was assisted by her three children, who severally used the extreme of their little exertions to further their mother’s questionable intention. Defendant of course denied the entire statement, attributing the black eye to a knock against a door, and declaring that, in her anxiety to prevent her child’s throat being cut with an oyster-knife by the bloodthirsty complainant, she had torn “all her hair off her head”. This description was accompanied with some figurative language peculiar to the defendant’s phraseology, which being replied to in a similar way by the complainant, the magistrates conveyed to the ladies their request that they should with all convenient speed get on the other side of the door.

Peace being restored by this arrangement, the bench were enabled quietly to fine Mrs Powter 6d and 11s 6d costs. Mrs Powter expressed a strongly worded opinion that she “didn’t intend to pay.”

7 October 1825

ACCIDENT AT OIL-MILL – On Tuesday last a man named Edward Pink, employed in the oil-mill at Shelford, on reaching for a piece of oil-cake, got his sleeve entangled in the cogs of one of the wheels, by which his left arm was severely shattered. He was conveyed to Addenbrooke’s Hospital, where amputation was instantly performed, and he is now going on well.



GREAT SHELFORD FOOTBALL CLUB

It doesn't seem five minutes since we were celebrating another successful season for the club. Having been Premier League champions the previous year the first team had to settle for the runner-up slot. In the past nine completed

seasons (two were Covid curtailed) they have taken the trophy on five occasions and been runner-up in the others! They also reached both cup finals, losing on penalties to Cambridge University Press (CUP) in the Premier League Cup before ending the season on a high by defeating Cherry Hinton in the Cambridgeshire Challenge Cup. Having been newly promoted to Senior B Division the previous year, two steps below the Premier, our young reserve team finished creditably in the top half of the table.

Due to the cricket season playing through August we unfortunately have the disadvantage of playing our first few games away from home. For reasons unknown this is nearly always compounded by the league pitting us against our nearest rivals! This season was no exception and could have excused a little trepidation, but the team really hit the ground running. CUP were comfortably beaten 3-1 and Champions, West Wrattling were held to a 1-1 draw, although the lads were disappointed a dominant second half display didn't produce a winner. What might have been expected to be a comfortable win against newly promoted Milton turned out anything but, ending in a narrow 3-2 victory. The fact it was the day after one of our team member's wedding however, may have had something to do with the lacklustre performance. Wrattling were the visitors for our first home fixture in what turned out to be another close encounter. Nick Impey, who last season was the league's leading goal scorer, gave us an early lead, only for us to concede an equaliser just before half time. As in the away fixture, chances were spurned, but just as it seemed the match was heading for another draw, Tobi Lawal secured all three points with a magnificent late winner.

The reserves went one better, winning all three of their opening fixtures. Histon Reserves and Abington United were beaten away from home 1-0 and 2-1 respectively, before the first home game brought a comfortable 2-0 win against newly promoted, Fenstanton. They were brought down to earth with a bump in their final game of the month, losing 2-0 away to Wimblington, who were also newly promoted. It was a scorching afternoon in the fens and although holding their own for most of the game they finally succumbed to a more experienced and street wise team.

There will be games down the recreation ground on most Saturdays so please come along and support your local club.

Terry Rider

CRICKET CLUB

We completed the league season with two victories, firstly a comprehensive 9 wicket win at Thriplow when Ralph Minter and Jonathan Ede both hit unbeaten half centuries, then a thrilling 2 wicket win over Barley on the rec. Barley got away very quickly despite Fazel Lee's 4 wickets, and even though our spinners contained the run rate the target was still an imposing 238. James Blackmur hit 39 including a glorious six onto the pavilion roof, but at the halfway stage we were 97 for 5 and things looked bleak. However, Luke Cawthorn hit fifty to keep us in touch before Mark Milne's 41 took us to victory with one ball to spare. We ended up in 4th place out of 9 teams, winning 7 of 13 matches played.

Before the season ended we played Little Shelford for the Centenary Cup for the first time since before the pandemic. It was a closely fought match, but in the end Seb Harrison's 91 not out took Little Shelford to victory, so they hold the cup until the next time, whenever that may be.

We were delighted to be able to hold our end of season dinner at the Square & Compasses. Mark Milne was voted Player of the Season by his fellow players for his consistent contributions with bat and ball. Opener Jeff Wilson won the batting award and Fazel Lee the bowling one, while the Terry Radford award went to Nusrat Hamid for his record breaking single match performance of 7 wickets for 12 runs, including a hat trick.

As the season ends particular thanks are due to Fazel Lee who took on the groundsman's role and produced excellent pitches through the summer. His commitment was illustrated prior to the last league match when unexpected rain required midnight adjustments to the covers.

Peter Ede (Chair)



CAMBRIDGE CAKE CREATORS

It has been a long wait but on Thursday 19 October we will be introducing Carol from 'Carol's Cakes'.

Carol will be demonstrating the making of frills.

We meet at Stapleford Pavilion at 7.30pm. £10 pp which includes coffee & cake.

Please ring Vanda on 561053 for more details.

READERS LETTER

On reading the September issue of the Village News I was amazed and distressed to note that the Parish Council is actually supporting the application to make use of a partially completed Dutch Barn like structure at Magog Court for a use which clearly does not come within those which are permitted in the green belt.



I am given to understand that permission was obtained to erect this unsightly structure using a process called Prior Approval which apparently bypasses normal planning

procedures on the basis, I presume, that the structure would be used for agricultural purposes. The application to which the Parish Council supports clearly represents a blatant breach of the law which governs the uses to which green belt land can be put.

Reading the documents which accompanies this application, I note that it is proposed to install more unsightly structures of the Portakabin type complete with car parking. The site is in a conspicuous position in open land between the village and the Gogs. I know that it is proposed to disfigure this land with the CSET busway but this is no excuse to make the situation even worse.

Anthony J Cooper

STAGECOACH EAST INTRODUCES NEW FARES


Stagecoach East has issued a range of new prices for its services, with the aim of encouraging customers to get out and about to explore Cambridgeshire, Bedfordshire and Peterborough.

In developing a range of new prices, the bus operator has increased eligibility for its Small Group, meaning that three adults can now travel around the region's Town zones all day for only £2.67 each. With the Large Group product, five adults can travel all day for just £2.20 each. The price of its single tickets over £2 has been frozen and the fare cap remains in place until 31 October 2023.

The popular £1 single fare between Cambridge Rail Station, the City Centre and Biomedical Campus will remain and Cambridge Park & Ride ticket prices have been frozen, so passengers can park free for up to 18 hours at any of the five sites and hop into town on a 100% electric bus.

TWIGS

FLORISTRY



twigsfloristry.co.uk
hello@twigsfloristry.co.uk

ENTIRE GROUP   

300007

The Complete Gas Heating and Plumbing Company

**Plumbing • Heating • Gas
Bathrooms • Water Softeners
Property Maintenance**

**Tel: 01954 204044 • Web: www.entiregroup.co.uk
Email: service@entiregroup.co.uk**



COACH HOUSE HEALTH CARE

Welcome to Coach House Health Care
— a refurbished and renovated clinic, situated in the grounds of Anstey Hall, where you can now find all your health and well-being practitioners under one roof.

Our qualified, experienced practitioners offer treatments in the following areas:

- Podiatry/Chiropody
- Physiotherapy
- Osteopathy
- Sports Massage
- Psychology
- Clinical Psychology
- Non-Surgical Cosmetic Treatments
- Plastic Surgery Consultations, including skin lesion assessments
- Consultant Dermatology
- Microsuction Ear Wax Removal
- Clinical Hypnotherapy
- Thread Vein Removal using Veinwave
- Medical Aesthetics
- Plastic and Cosmetic Surgery

Animesh Patel, Plastic Surgeon and co-owner
Lorna Bacon, Podiatrist and co-owner

COACH HOUSE HEALTH CARE
The Courtyard, Anstey Hall, Maris Lane, Trumpington, Cambridge CB2 9LG
01223 340491
reception@coachhousehealthcare.co.uk
www.coachhousehealthcare.co.uk
Free car parking and wi-fi

CLINIC ROOMS AVAILABLE TO RENT

If you are a qualified practitioner, looking for a clinic to practice, contact us to find out how to join our team. We can now support CQC registered clinicians to use us as a location for their CQC registered procedures.



JASON KIRBY
Professional Painting & Decorating Ltd

A Professional Service from Start to Finish

Tel: 01954 211775
www.jasonkirbyltd.co.uk

H.R. MILLEN LTD

Training Facilitator



First Aid
*CPR *Control of bleeding
*Debridement
and much more...

For more information call:
01799 531 100
or email:
office@hrmillen.co.uk

LITTLE SHELFORD FILM EVENING

Saturday 18 November 2023

There will be a Memorial Hall film evening with a showing of **'Living'** on Saturday 18 November. Doors open at 7.00 pm for a 7.30 pm start with a break for supper of pizza and salad.

'Living' is a 2022 British drama film directed by Oliver Hermanus from a screenplay by Kazuo Ishiguro and partly inspired by the 1886 Russian novella *The Death of Ivan Ilyich* by Leo Tolstoy. Set in 1953 London, it depicts a bureaucrat in the county Public Works department (played by Bill Nighy) facing a fatal illness. The film received positive reviews, with Bill Nighy's performance receiving particular acclaim and at the 95th Academy Awards he was nominated for Best Actor and the film for Best Adapted Screenplay.

Tickets (£15.00 per person) will be available from

Sarah Coppendale: (842498) coppendales@btinternet.com and

Diana Haines (841415) dianahaines42@icloud.com

Please book by Wednesday 15 November so that food can be ordered.

THE OVER 70s CHRISTMAS PARTY RETURNS!



After a long Covid induced break, the Over 70s Christmas Party will take place again this year.

When: Wednesday 22 November from 2.15 to 4.30pm.

Where: Great Shelford Memorial Hall.

If you are over 70 and fancy a chat, a laugh and a good tea, then this is the event for you. Tickets are free.

If you would like tickets, please phone Helen Harwood, tel. 840393, e-mail helen_harwood_uk@yahoo.co.uk (or you can drop a note through my door at 28 High St). Tickets will be delivered to you in early November.

You may apply for more than one ticket. Your guest need not be over 70.

There will be 80 tickets, on a first come, first served basis.

Please note: if on the day you think you are suffering from Covid, cold or flu, we ask you please not to come.

PS If you're under 70, and good at baking, then help is very welcome, with baking mince pies, scones or cakes for the tea.

Helen Harwood

STAPLEFORD
GRANARY

MUSIC • ART • CULTURE

OCTOBER

Eleanor Grant, double bass & voice & Gus McQuade, guitar**Sunday 1 October | 3:00pm**

Two rising stars perform an eclectic programme of music from the Renaissance to the present day, with jazz & folk influences

Daniel Lebhardt, piano**Friday 6 October | 7:45pm**Brahms, Scriabin, Ligeti & Bartók played by this award-winning pianist, admired for his '*poetry, panache & formidable technique*'**Norwich Puppet Theatre: A Midsummer Night's Dream****Saturday 7 October | 3:00pm (Age 6+)**

A sideways take on Shakespeare's classic play with beautifully carved puppets, original music & shadow puppetry

Leveret**Wednesday 11 October | 7:45pm**

Music for fiddle, accordion & melodeon rooted in the English tradition, played by three of folk's finest instrumentalists

Kate Romano, clarinet & Rob Godman, sound projectionist**Sunday 15 October | 3:00pm**

Electronic music from the pre-digital era including pieces by minimalist master Steve Reich & jazz pioneer William O Smith

Robert Mitchell & True Think**Saturday 21 October | 7:45pm**

A unique ensemble blending electronics, RnB & spoken word, led by pianist Robert Mitchell, one of the most significant voices in jazz

Hannah Sanders & Ben Savage, voice & guitar**Sunday 22 October | 3:00pm**Acclaimed Americana folk duo whose most recent album was described as '*heartwarming and beguiling*' by MOJO magazine**Clare O'Connell, cello & Miloš Milivojević, accordion****Sunday 29 October | 3:00pm**

Music by Bartók, Piazzolla, Vlasov & Angelis showcasing the extraordinary versatility of the cello & accordion

Booking: www.staplefordgranary.org.uk | 01223 849004



OPERATION CHRISTMAS CHILD

Shoe Box Appeal

It is this time of the year again. Thank you for all the support over the last few years especially with the difficulties due to Covid. Last year nearly eleven million boxes were sent around the world including two thirds of the boxes packed in the UK having gone to UKRAINE and the countries around who are supporting those who have fled the war.

This message is to encourage you to get involved again (or as a first timer) and fill a shoebox. It is a way of showing God's love. Each box may be the only gift a child will receive. So often items are treasured for years after and even into adulthood. Adding a photo or short message (no address) means so much.

Ways to get involved

1. Fill a whole shoebox with the suggested items (see link below) OR
2. Donate one or more items OR
3. Make a donation which can be used to buy items or for transport and training costs
4. Pack an 'online box' for £20. You can choose gifts via the website <https://shoebboxonline.samaritans-purse.org.uk>
5. Make a cake for the cake sale on November 18, 10–12noon

Suggested items are stationery, toiletries (not toothpaste or liquids), toys, jewellery, hats, gloves, scarves, paper, balls, socks, (there is a long list on the website – see below along with items to avoid)

Age Groups- 2-4 yrs, 5-8 yrs, 9-14 yrs. Boys or Girls

Covered shoeboxes can be used or you can pick up a preprinted flat pack box from Gt Shelford Free church along with an information leaflet.

Collection week is 13 – 20 November when you can drop off filled boxes or loose items at my house or see other drop off places (details on website).

There will be a shoebox filling party on Saturday 18 November at Great Shelford Free church along with a cake sale.

I am a year round volunteer for Operation Christmas Child (OCC). Please do get in touch if you need help or further information: tel 01223 893232 / 07745046921 / 842181.

Email. jane.furlow@gmail.com

<https://www.samaritans-purse.org.uk/what-we-do/operation-christmas-child/>

Thank you in anticipation of your support.

Jane Furlow

WHAT'S ON IN OCTOBER

A round up of what's on at some of the venues near us. For more information, times, ticket prices and bookings, please contact the organisation. This information has been taken from websites, can be subject to change and the event may already be booked.

CAMBRIDGE ARTS THEATRE	
3–7	Frankenstein
17–21	A Voyage Around My Father
22	Ronnie Scott's Soho Songbook
25–29	Horrible Histories: Barmy Britain
Telephone: 01223 503333 Web: www.cambridgeartstheatre.com	

CAMBRIDGE CORN EXCHANGE	
3	Bernie Taupin – Scattershot
9	Howard Jones
18	The Waterboys
25	Ukraine National Symphony Orchestra
Telephone: 01223 791791 Web: cambridgelive.org.uk/cornex	

CAMBRIDGE UNIVERSITY	
	Spitting Image: A controversial history. University library.
	Black Atlantic: Power, People, Resistance.
www.cambridgeppf.org/Pages/Events/	

SAWSTON CINEMA	
2	A Man Called Otto (7pm)
Telephone 01223 712825 Web: www.sawstoncinema.org.uk/	

GREAT SHELFORD PARISH CHURCH	
<p>Emma and The Dinosaurs are a 5 piece covers band and will be playing in Great Shelford Parish Church on Saturday 21 October at 7.30pm.</p> <p>Songs to include 'Downtown' by Petula Clark, 'I Will Survive' by Gloria Gaynor, 'Simply the Best' by Tina Turner, 'Summer of 69' by Bryan Adams and many more! Tickets £10 from Kim Lane on 07825 769779.</p> <p>All proceeds to the Organ Fund</p>	

HOW TO CONTACT GREAT SHELFORD VILLAGE NEWS

We are pleased to receive articles, letters and notices for community events for consideration. Please send by email (preferably as a Word document), or send paper items, with contact details, to Judith Wilson, 11 Elms Avenue, Great Shelford CB22 5LN. The copy date is usually the second Friday of the month. See the *Next Issue* box for next month's date.

For guidance, please note that an article of around 400 words, without a photo, will fill a full page. Notices for events work best as a half page (half A5) in landscape format.

General enquiries and articles for publication:

01223 842553 gsvneditorial@gmail.com

Commercial advertisements

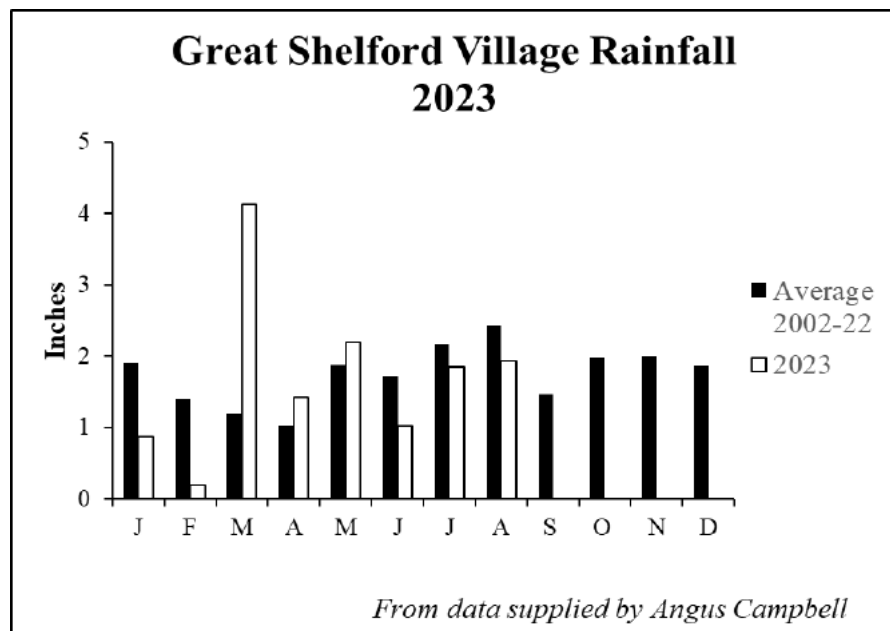
These are for a 12 month period, renewed in January. There is a waiting list.
gsvnadverts@gmail.com

Subscriptions and online payment details

01223 842993 gsvnsubs@gmail.com

Editorial Committee

Duncan Grey, Bridget Hodge, Marjorie Smith, Judith Wilson.



LOCAL ORGANISATIONS

2G3S Green Group	Linda Whitebread	greengroupsssss@gmail.com	843438
Badminton (Little Shelford)	James Newman	james@jamesnewman.org	843272
Bowls Club	Gill Taylor	gill.m.taylor@gmail.com	845904
Brownies, Guides, Rainbows	Lisa MacGregor	shelforddistrict@gmail.com	843021
Bunch – Feast	Duncan Grey	dsg@post.com	842191
Carpet Bowls	Wendy Seekings	m.seekings039@btinternet.com	843416
Citizens Advice Bureau	Cambridge		0808 278 7808
Country Market	Dorothy Doel	dorothy@woodlandsroad.plus.com	843946
Cricket Club	Peter Ede	peter.ede@ntlworld.com	01223 510662
Football Club	Terry Rider	footybeast63@sky.com	01354 680661
Free Church	The Administrator	administrator@shelfordfreechurch.org.uk	842181
Friends of Shelford Library	Daphne Sulston	dsulston@googlemail.com	842248
Granta Medical Practices		capccg.Covid19.gmp@nhs.net	0300 234 5555
Great Shelford Online	David Martin	www.greatshelfordonline davidm1961@gmail.com	845995
Memorial Hall Bookings	Jenny Eldridge	office@greatshelfordparishcouncil.gov.uk	01223 616622 Ext 302
Mobile Warden Scheme	Claire Smith (Warden)	saurus1960@gmail.com	07811 676991
	Jenny David (Chair)	jennykmf@yahoo.co.uk	845367
Parish Church Bell-ringers	Ann Seaman	juliet.a.seaman@outlook.com	504682
Parish Church Community Room	Mary Lester	lestermh_uk@yahoo.co.uk	842411
Parish Church Friends	Bob Doel	bobdoel@woodlandsroad.plus.com	843946
Parish Church Sunday Club	Gillian Pett	gillian.pett29@gmail.com	843278
Parish Churchwardens	Simon White	churchwarden@stmarygreatshelford.org	07984 451305
	Joanne Staines	churchwarden@stmarygreatshelford.org	07790 415732
The Great Shelford Village Charity	Mary Lester (Clerk to the Trustees)	clerk@gspc.org.uk	842411
Police	Non-emergency number		101
Rainbow Pre-School	Allison Tomlin		07985 216603
Royal British Legion	Kevin Swann	sawstonpampisford.secretary@rbl.community	07496517859
Rugby Club	Secretary	secretary@shelfordrugby.co.uk	843357
Sawston Sports Centre	Sawston Village College	info@sawstonsports.com	712555
Beavers, Cubs and Scouts		contact@sandsscouts.org.uk	
Shelford & Stapleford Strikers	Douglas White	douglas.white2@ntlworld.com	561753
Shelford Bridge Club	Tony Cliff	anthony.r.cliff@gmail.com	07532 737794
Shelford Primary School	Chris Grey (Headteacher)	office@shelford.cambs.sch.uk	843107
Shelford Spokes Cycling Club	Brian Connellan	shelfordspokes@gmail.com	07941 574663
Shelford Support Group (transport to hospital, etc.)	General enquiries: Gillian Northmore		shelfordsupport@googlemail.com 504542
	John Dibnah	842054	Carol Bard 668157
	Rosie Cranmer	513572	Marjorie Smith 564922
Stapleford Choral Society	Adam Pounds	adampounds54@btinternet.com	07804 308042
Tennis Club	Sarah Richards	secretary@gstc.org.uk	
The Arts Society South Cambs	to be announced		
Twinning Association	Penny Pearl	penny.pearl@btinternet.com	842483
U3A (Sawston Branch)	John Gray	johngray6@gmail.com	01223 841784
WI	Vanda Butler (Secretary)	vanda.butler@googlemail.com	561053
Youth Initiative	Zac Britton	zac.britton@ssyi.club	07599 024210

FUN RUNNERS

(see page 35)

