

# Great Shelford VILLAGE NEWS

EST 1999

MAY 2023

PRICE: 40p

*Neighbourhood Plan – make your views known*

The collage features a teal background with various text snippets in white and yellow. A central white rounded rectangle contains the text: "OUR NEIGHBOURHOOD PLAN", "Stapleford and Great Shelford", and "We can shape the place where we live". To the right, a yellow starburst contains the text: "INSIDE: find out how YOU can take part". Below the starburst, the text "OUR VILLAGES, OUR FUTURE, OUR SAY" is displayed. The background text snippets include: "Village identity needs protecting", "Beautiful views", "Too much building", "Losing our rural character", "Absorbed into Greater Cambridge urban sprawl", "Climate change", "Stop building on every piece of land", "Unsafe cycle routes", "Traffic noise", "Excessive car use for short journeys", "Congestion outside schools", "Loss of greenfield sites", "Healthy commuting", "Multi-use", "More natural", "cycling", "shops", "new", "shops and cafes", "Greenest option", "Lack of school and medical facilities", "Rural landscape setting", "We need a thriving high street", "Protect greenbelt", "Little public access to the river", "Poor off-road links", "Gog Magog Hills", "Wandlebury Park", "Access to green space is really important", "Environment must be top of agenda", "Protection of aquifers and chalk streams", "Village bypass", "Affordable housing", "Lack of tree cover".

Village identity needs protecting Beautiful views Too much building Losing our rural character Absorbed into Greater Cambridge urban sprawl Climate change Stop building on every piece of land Unsafe cycle routes Traffic noise Excessive car use for short journeys Congestion outside schools Loss of greenfield sites Healthy commuting Multi-use More natural cycling shops new shops and cafes Greenest option Lack of school and medical facilities Rural landscape setting We need a thriving high street Protect greenbelt Little public access to the river Poor off-road links Gog Magog Hills Wandlebury Park Access to green space is really important Environment must be top of agenda Protection of aquifers and chalk streams Village bypass Affordable housing Lack of tree cover

**OUR NEIGHBOURHOOD PLAN**  
**Stapleford and Great Shelford**  
We can shape the place where we live

**COMMUNITY ENGAGEMENT**  
- ROUND 2 -

**INSIDE:**  
find out how  
**YOU** can take part

**OUR VILLAGES,  
OUR FUTURE,  
OUR SAY**

*Goodbye to Kash*

*Square and Compasses Reopens*

CONTENTS			
Parish Council Minutes	1	Magog Trust – Trustees Wanted	29
Parish Council Meetings	6	British Cactus & Succulent Society	29
Planning	6	Better Ways 4 Busways Update	31
Parish Council News	6	Cambridge Flower Club	31
Parish Church	9	John Clitheroe	32
Royal British Legion	12	Organic Gardeners’Group	32
Free Church	14	Library News	34
Open Space	16	2G3S	36
Square and Compasses	17	Twinning Association Breakfast	39
Country Market	19	Twinning Association Quiz	41
Friends of the Parish Church	19	The Shelford Feast	42
School News	20	Granta Flower Club	42
Mike Paduano Memorial Party	21	Old News	44
The Shelford Feast - Events	23	Cricket Club	44
Diary	24	Tennis Club	45
Neighbourhood Plan Update	25	How to contact the Village News	46
Goodbye to Kash	26	What’s On	46
WI	27	Rainfall	48
Cambridge Cake Creators	27	Local Organisations	Inside Back cover
GREAT SHELFORD PARISH COUNCIL			
CHAIR     Malcolm Watson		DEPUTY CHAIRS     Gregory Price, John Stanton	
CHAIRS OF SUB-COMMITTEES			
Planning			

## **GREAT SHELFORD PARISH COUNCIL**

*greatshelfordparishcouncil.gov.uk*

### **SUMMARY FROM THE UNADOPTED MINUTES OF THE MEETING ON 15 MARCH 2023**

#### **PARISH COUNCILLOR CHANGES**

Ms Naomi Neil was co-opted as a new Parish Councillor.

#### **PUBLIC PARTICIPATION SESSION**

Annabel Sykes summarised the process involved in the Cambridge Biomedical Campus Spatial Framework and what feedback had been provided by the Local Liaison group to Cambridgeshire Greater Shared Planning. The Cancer Research Hospital application was submitted in January 2023 but there was nothing in the Government's budget for hospitals. The Cancer Hospital is due to be completed before the Childrens' Hospital and Addenbrooke's 3, the modernisation programme, is some way behind this.

#### **APPROVAL OF MINUTES**

The Clerk noted that there is ongoing communication with County Councillor Milnes about the lack of repairs to reported potholes.

#### **DARRYL PRESTON, POLICE AND CRIME COMMISSIONER**

Mr Preston provided a summary of his career and current role as Police and Crime Commissioner. His Crime Plan has five areas: putting communities first, crime prevention, supporting victims and witnesses, ethical policing and robust enforcement. Mr Preston answered questions raised by Councillors about residents' concerns and he noted that there is a public confidence issue in the police. He will send contact details to the Clerk for the local Community Safety Partnership to help look at how the village can get better support and how communication between authorities and the police can be improved.

#### **GRANTA MEDICAL PRACTICE**

Tim Harrison, Chief Executive and Sandra East, Head of Patient Services from Granta Medical Practice updated members on how the practice has had to evolve since Covid. Residents are living longer, with more long term health conditions, which in turn increases pressure on the healthcare system. The two attendees were open and honest about the difficulties the practice is facing and how it is working towards the future.

#### **REPORTS FROM COUNTY & DISTRICT COUNCIL MEMBERS**

It was noted that a report from the District Councillors had been received before the meeting but that no report had been received from County Councillors.

# JO ALEXANDER

Reclaimed Teak, Concrete &  
All Weather Wicker furniture for your garden

01954 267857

[www.joalexander.co.uk](http://www.joalexander.co.uk)



**David Levy**  
**MSSCh MBChA**

**Chiropody  
and  
Podiatry**

**Home Visiting  
Service**

Mobile: 07966 136972

Home: 01223 834634

01223 459239

**green|weigh**

minimal wasteshop

*Eco-friendly, ethically  
sourced food refills &  
other products*

**60 High Street  
Sawston CB22 3BG**

Email:  
[hello@greenweighshop.co.uk](mailto:hello@greenweighshop.co.uk)

Facebook/Instagram:  
[@greenweighshop](#)

Website:  
[www.greenweighshop.co.uk](http://www.greenweighshop.co.uk)

Tues-Fri: 9am to 5pm  
Sat: 9am to 4pm

**sawstoncarpet  
andflooringltd**

Carpets - Sisal - Vinyl

Wood - Laminate

Karndean - Amtico - Moduleo

**Mon-Fri: 9am-5pm**

**Sat: 9am-4pm**

Unit 34, Eastern Counties Leather Site,  
London Road, Pampisford CB22 3EE  
Tel 01223 837005

[sawstoncarpetsandflooring@gmail.com](mailto:sawstoncarpetsandflooring@gmail.com)  
[www.sawstoncarpetsandflooring.com](http://www.sawstoncarpetsandflooring.com)

## **NICHOLAS CLIFFE & CO** **CHARTERED ACCOUNTANTS**

***Business Advisers for South Cambridgeshire***

**Accounts, Audit, VAT & Tax Advice**

**WE WANT TO HELP YOUR BUSINESS GROW**

**Realistic Fees**

**We offer a free initial meeting and business 'health check'.**

Mill House, Mill Court, Great Shelford

Tel: 01223 471576

[www.nicholas-cliffe.co.uk](http://www.nicholas-cliffe.co.uk)

## **COMMITTEES AND WORKING GROUPS**

### **Neighbourhood Plan**

An update from the Steering Group Chairman had been circulated to members. The group are now ready for mid term consultations in April.

### **Better Ways for Busways**

It was noted that a report had been circulated from Howard Kettel on behalf of the campaign group providing an update of activities.

An invoice from a member of the campaign group was considered by members. It was agreed to pay £5,662.70 (to be spent from Earmarked Reserves for CSET) and to seek reimbursement of 50% from Stapleford. It was noted that the campaign members have been asked to seek funding before any commitment to spend money.

### **Climate Emergency Working Group**

Cllr Mann noted that a draft Action Plan has been drawn up by the group.

### **East West Railway (EWR)**

Cllr Brown provided feedback on his attendance as representative of the Parish Council at the Local Liaison Forum meeting for Cambridge City and surrounding areas in March 2023. The last meeting had been held in October 2022 and it was noted these meetings should be quarterly.

Cllr Brown reported that attendees state the agendas do not allow discussion and that coverage of the Environmental Impact Initial Assessment has been superficial and evasive. The agendas are being reviewed to allow more discussion and an independent Chair has been appointed to start at the next meeting.

Cllr Watson informed members that he has been recently invited to a new EWR Working Group. It was agreed that Cllr Brown should be the nominated representative for Great Shelford when the group is formed and that Parish Councils need to understand the function of the group, how it will work and its objectives.

### **Traffic and Transport Infrastructure Working Group**

The proposed Traffic Policy as drafted by the Working Group was considered by members. It was agreed that the policy be adopted and circulated to Stapleford and Little Shelford Parish Councils and the Neighbourhood Plan steering group for their information.

It was noted that Intermodal have commenced their Phase 2 works and have started monitoring traffic on Church Street.

## **COUNCIL ADMINISTRATION MATTERS**

A request to park at the Memorial Hall and provide food, similar to the agreement with the current vendor, (Pimp my Fish) was considered by members after receipt of more detailed information. It was agreed to support this with a trial for three nights a week, for three months. The Parish Council would reserve the right to say if it is not appropriate to trade on a particular evening.

Cllr Watson noted that social media is a very important tool for the Parish Council and there need to be some guidelines on how councillors comment on Parish Council matters. Any policy must tie in with the Communications Protocol already adopted by the Parish Council.

The Clerk noted that progress had been made on items on the Business Plan as follows:

- there was a meeting with Cam Valley Forum on 20 March about the riverbank
- the Quality Level of the Local Council Award Scheme has been received by NALC and feedback should be received this month
- guidance has been received from volunteers at the Clay Pit about what they would like to see done to improve the area for the benefit of all.

## **COMMUNITY MATTERS**

Great Shelford Warm Hub is now in its final weeks and only operating on Mondays and Fridays due to lack of attendees and availability of volunteers. The Communications Working Group will get together to look at proposals for a Community Hub for the Autumn.

The Clerk summarised ideas for events for the Coronation weekend. It was noted that several community groups have volunteered to help with an event and it would not be left to the Parish Council alone. It was agreed to organise a Dinner Dance for October and to have a family Fun Day on Sunday 7 May, incorporating a duck race, with a budget of £2,500.

It was noted that the Co-op had put in a new premises licence application for 7 De Freville House and that the deadline to comment was before the next planning committee meeting. It was agreed to support the application.

## **FINANCE MATTERS**

It was agreed to provide a grant of £300 to Shelford Library for the summer reading challenge.



Shelford Day Nursery

Visit our website:

[www.shelforddaynursery.org](http://www.shelforddaynursery.org)

Call us: 01223 857 129

Find us on Facebook:  
Search Shelford Day Nursery

## Shelford Physiotherapy

Are you in pain?

Call 01223 844 488

Stephanie Hatter BSc (Hons)

A Chartered Physiotherapist  
registered with the HCPC.  
Recognised provider for  
BUA, AXA PPP, Aviva, etc.



**SAM  
McGUINNESS**  
**CURTAIN MAKING  
ROMAN BLINDS  
SOFA COVERS**

Call or email  
for a free quotation  
07803 737518

[samcampbell39@hotmail.com](mailto:samcampbell39@hotmail.com)

Great  
Value

**KASH STORES**

Local  
Services

A great deal more from your local store!

General Groceries • Fresh Produce • Confectionery  
Instore Bakery • Off Licence • Photocopying  
Newspapers • Magazines • Stationery • Lottery  
Dry Cleaning • Shoe Repairs • Passport Photos

Full Post Office counter facilities

33-35 Hinton Way, Great Shelford

Tel: 01223 843307

Shop opening times:

Mon-Sat:  
7.00am-6.30pm  
Sunday:  
7.00am-1.00pm

POST  
OFFICE

Post Office opening:

Mon-Fri:  
9.00am-5.30pm  
Sat:  
9.00am-1.00pm

**TAYABALI & WHITE**

ACCOUNTANCY | TAX | CONSULTING

5 High Green, Great Shelford, Cambridge CB22 5EG

Telephone: 01223 843324

Email: [enquiries@tayabali-white.co.uk](mailto:enquiries@tayabali-white.co.uk)

**Daniel Anderson**  
**Friendly Gardening**  
**Service**

No job too big  
No job too small  
Good affordable  
rates

**07852 971 696**  
**andersongardening**  
**@outlook.com**

## PARISH COUNCIL & COMMITTEE MEETINGS IN MAY

Recreation & Pavilion Committee	10 May	7pm Pavilion
Planning Committee	15 May	7.30pm Pavilion
Annual Full Council Meeting	17 May	7pm Pavilion
Planning Committee	22 May	7.30pm Pavilion

Meetings may be adjourned for up to 15 minutes when the public can ask questions and put forward points of view related to business on the agenda or for items they wish to raise for future agendas. No decisions can be made in this section of the meeting.

## PLANNING APPLICATION PARISH COUNCIL COMMENTS

23/00462/HFUL	29 Westfield Road	First floor extension across the existing footprint with front facing dormers; alterations to the current roof for additional bedroom, bathroom and study space.
Application objected to as the proposed development is in contravention to planning policy HQ/1 sections 1a and 1n, is not in keeping with the street scene and will result in loss of light to a neighbouring property.		

Full copies of the minutes of the Parish Council and Planning meetings can be viewed on the Parish Council website

*[greatshelfordparishcouncil.gov.uk/minutes-agendas](http://greatshelfordparishcouncil.gov.uk/minutes-agendas)*

## PARISH COUNCIL NEWS

The evenings are getting longer, our new King is soon to be officially crowned and our village is buzzing with activity.

### Traffic and Transport

Our Traffic & Transport Infrastructure Working Group has asked me to clarify some details with you about the traffic studies we have been undertaking.

In February last year we asked a traffic consultant to specifically look at road safety on three roads in the village which are causing a lot of concern. Their final report is available on our website. They have made recommendations



which we are now asking them to model to see if they are feasible and if they would have the desired effects of making the roads safer for all users, not have any adverse effects on other roads in the village or neighbouring villages, help make Great Shelford a destination village and be acceptable to the Highways Department.

This final point is important. Whatever we feel may help our village become safer for all users must be approved by Highways at the County Council as the roads are their responsibility. Having said this, before we speak with Highways we will, of course, consult with you all too, to see whether you would support these proposals.

### **‘Quality’ Council**

I am very pleased to announce that Great Shelford Parish Council has received the Quality Level as part of the National Local Council Award Scheme. This achievement recognises that your council achieves good practice in governance, community engagement and council improvement. Moreover, we go above and beyond our legal obligations, leading the community and continuously seeking opportunities to improve and develop further.

The Local Council Award Scheme is a peer assessed programme designed to provide the tools and encouragement to councils in their improvement journeys and to promote and recognise councils that are at the cutting edge of the sector. It is through the sector working together to share best practice, driving up standards and supporting those committed to improving their offer to their communities, that individual councils and the sector as a whole will reach its full potential.

### **Memorial Hall**

Thank you to everyone who has taken the time to fill in the survey on the Memorial Hall. We are in the process of looking through the information received in order to then speak with architects about what is possible – with no promises that anything will happen.

Don’t forget to get in touch with us should you have any relevant concerns. Our telephone number is 01223 616622 and Libby will be available to help during office hours (please leave a message outside of these times or email). Councillors have emails too, which can be found on the website. If you do email a Councillor we ask that you copy in Libby.

*Malcolm Watson, Chairman*



**FOXCOTTE**  
TIMBER/BUILDING/DIY CENTRE

**TIMBER, SHEET MATERIALS  
& JOINERY**

**PAVING & FENCING**

**BUILDING MATERIALS**

**AGGREGATES – LOOSE & BAGGED**

**DECORATING, IRONMONGERY  
& HAND TOOLS**

**FIXINGS, ADHESIVES & SEALANTS**

**INSULATION & PLASTERBOARD**

**DRAINAGE**

**GARDEN MACHINERY SALES  
& SERVICES**

**TREE SURGERY**

**MON - FRI**

**7.30AM - 5PM**

**SAT 8AM - 1PM**

FOXCOTTE, COMBERTON ROAD, BARTON,  
CAMBRIDGE CB237BA

[www.foxcotte-cambridge.com](http://www.foxcotte-cambridge.com)

**01223 263 702**

## BECOME A TUTOR

Are you a Subject Expert, Teacher, or Tutor wanting to make a difference in students' lives?

Then we have the opportunity for you!

Tutor Doctor Cambridge is looking for Primary and Secondary English, Maths, and Science Tutors to work in homes and schools in the Cambridge area.



Apply today at:

[www.tutor-doctor.co.uk/cambridge-norwich-recruitment](http://www.tutor-doctor.co.uk/cambridge-norwich-recruitment)

01223 430434

THE TUTORS'  
ASSOCIATION

**tutor  
doctor**  
How learning hits home.

Approved by  
Department of Education



ASSESS



MATCH



TUTOR



SUPPORT



• Home • Workplace • Public •

**01223 430040**

[www.cambridge-evpoints.co.uk](http://www.cambridge-evpoints.co.uk)

Contact our experienced team for all your EV charging needs.

CAMBRIDGE  
ELECTRICAL  
SOLUTIONS LTD

IC 800  
Approved  
Installation

REGISTERED MEMBER  
ECA

Office for  
Zero Emission  
Vehicles

**After a buyer who loves  
what you've done?**

**Best talk to Bidwells**

**BIDWELLS**



PROUD SPONSORS OF SHELFORD RUGBY CLUB

**01223 624 573**  
[talktobidwells.co.uk](http://talktobidwells.co.uk)



## GREAT SHELFORD PARISH CHURCH

### SAINT MARY THE VIRGIN

#### **Julie's Jottings**

A post Easter trip to France found me in Giverny visiting Monet's Garden, where many of his water lily paintings were set. It was an amazing picture of thousands of resplendent spring flowers in bloom, even though the pond lilies were not yet in bud. Nearby a small boy asked his father, 'What does "once in a lifetime" mean?' His father explained that sometimes you only see something so beautiful once and you need to value it. We know what he means. A picture of beauty stays in the mind's eye and can bring pleasure and inspiration long afterwards and even when life gets more mundane.

There are photographs at Giverny which show the same spot in the garden throughout the year. The dense carpet of flowers changes completely with the seasons. However, it always has beauty and always brings hope.

As May begins, we are looking forward to the Coronation of King Charles III. At the Coronation of Queen Elizabeth II, my granny told my mother and her sister that this was a 'once in a lifetime' occasion. To her dying days, granny held onto that memory and would recall it whenever mention was made about the Queen. It signalled to her a hope for the nation and made her proud to be British. As we look forward to the splendour of King Charles' Coronation, we have an opportunity to celebrate together and hope for something good.

*Rev Julie Norris*

#### **Christian Aid Week May 14–20**

Christian Aid works across the world helping communities towards a life free of poverty, assisting with humanitarian emergencies and campaigning for justice and change. During Christian Aid Week we are called upon to focus on specific areas of need and to raise funds for their relief and improvement.

This year the spotlight is on Malawi where families are struggling, with the ever rising costs of food, fuel and fertiliser, cruelly aggravated by droughts, flooding and failure of harvests. Even where a hardy drought resisting, soil revitalising, high protein crop – pigeon peas – is being grown, unscrupulous middlemen have cut in to strip profit from the growers. By supporting the communities involved, Christian Aid has restored their opportunities to move out of desperate poverty, live fairly from their labours and pay for the education of their children.

Visit [caweek.org/BigPea](http://caweek.org/BigPea) to get started with helping out. Envelopes for donations are available in St Marys' Church, please Gift Aid your donation if you are able.

**Celebrations of the Coronation of King Charles III**

**Friday 5 May** 6.30pm in St Mary's Church: Evening Prayer on the Eve of the Coronation.

**Sunday 7 May** A Celebration of the Coronation of King Charles III

At St Mary's Church Holy Communion BCP 8am.

On this very special occasion St Mary's and the Free Church will join in a Civic Celebration of the Coronation at 10.30am in St Mary's Church. There will be activities for the children.

**What else is happening in May?**

After so much pageantry and excitement we can afford to relax and spend some time reflecting on the history of the moment and the promises of the future.

**Wednesday 10 May** The Annual General Meeting of the Friends of St Mary's will be held in the Community Room at 7.30pm.

**Saturday 13 May** A Coffee Morning, deferred from the previous weekend, will take place from 10am–12 noon in the Community Room, with an opportunity to browse and buy from a range of books and bric-a-brac.

**Sunday 14 May** Sixth Sunday of Easter

Holy Communion BCP 8am.

Parish Communion at 10 am.

**Thursday 18 May** St Mary's Communion in Cambridgeshire Care Home.

**Sunday 21 May** The first Sunday after Ascension Day

Holy Communion BCP 8am.

Parish Communion at 10am.

Young people meet for their discussion group at 5pm.

**Friday 26 May** School Ascension Day Service at 9.30am.

**Sunday 28 May Pentecost**

Holy Communion BCP 8am.

Parish Communion at 10am.

Open Space at the Free Church for children and families at 3pm.

**Do pay us a visit**

We are seeking to make the church a place to drop into for solace and space during the week. You are welcome to come in and look around at the historical features of a building, some dating from Saxon times.



## Shelford

### Tree Service Ltd

Professional Tree Surgeons covering  
Cambridgeshire and Hertfordshire

Fully Qualified & Insured

01763 208361 / 07743406569  
shelfordtreeservice.co.uk

## Rothwell's Carpet Cleaning

### Carpet Cleaning & Stone Floor, Upholstery, Rugs

*A few points that make us stand out:*

Rothwell's has been in business since 1993.

We're an honest local family firm.

Our large truck-mounted machines mean  
more cleaning & drying power  
for the best results possible.

Members of both the NCCA and TACCA.

We will move the furniture.

100% satisfaction or it's FREE.

Call Oliver and Max Campbell

for expert help today.

01223 832 928

[www.Rothwells.biz](http://www.Rothwells.biz)

Introducing...

# ACElectrics

### Your Local Electrician

- Lighting and Power
- Electric Vehicle  
Chargers
- New Consumer Units
- Testing and Inspection
- Minor Works
- Fault Finding
- Outdoor Lighting
- Extensions

A friendly, tidy and reliable  
electrician ready to serve  
the people of Great  
Shelford. Feel free to get in  
touch with any of your  
electrical requirements.

**CALL ADAM**  
**01223 89 48 48**

Email:  
[adam@acelectrics.live](mailto:adam@acelectrics.live)

Web:  
[acelectrics.live](http://acelectrics.live)



# Great Shelford Parochial Charities

Supporting people in our village

## Grants

We welcome applications for small grants to  
support local people and good causes

## Housing

We provide 53 almshouse homes for Great  
Shelford people on low incomes

## Allotments

Available to rent for a nominal annual fee

We welcome donations supporting our work; see website



[www.gspc.org.uk](http://www.gspc.org.uk)

[clerk@gspc.org.uk](mailto:clerk@gspc.org.uk)

01223 842411



facebook

We have historic information to read and photographs of the church interior to view. There is an area where children can come and read some books, a space to light a candle and leave a prayer request. There are books on how to pray. There is also a book stall where people can bring books and buy books for a small charge or donation.

### **Our new website**

The fully updated and revised website is nearing the time when we can go back online. Sections of the site will be edited every month so that, as with this bulletin in the *Village News*, you will be able to track our activities with confidence.

### ***Thought for the month:***

*We can give without loving, but we cannot love without giving. Victor Hugo*

<b>For more information about Great Shelford Parish Church</b>
--

Vicar: Revd Dr Julie Norris
-----------------------------

<i>Revjulienorris@gmail.com</i>
---------------------------------

St Mary's Great Shelford is a Registered Charity No 245456
--

## **ROYAL BRITISH LEGION SAWSTON & PAMPISFORD BRANCH**

Did you know that you don't have to have served in any of the Armed Forces to become a member of the Royal British Legion (RBL)? Many of our members have not served in any of the forces but still support the ongoing work of the RBL.

The Sawston & Pampisford Branch meet on the last Wednesday of the month (apart from July) at 7.30pm at Chapelfield Way Community Centre, Link Road, Sawston CB22 3GB. New members from the surrounding villages are always made welcome.

### **Speakers:**

**31 May Simon Butler with a talk entitled 'Paramedic – 40 Years of Change'**

**28 June Rev Kathryn Waite talking about her trip to Rwanda last year**

With the celebrations for the Coronation of King Charles III over the first weekend of May, the pop up shop will be present at many of the events in Sawston, come along and see what we have on sale during the Sawston Fun Run and ongoing events happening on the Spicers Sports Field.

For more information please contact Branch Secretary, Kevin Swann on 07496 517859 after 6pm. Please leave a contact number and message if Kevin is unable to take your call.



Thinking of selling or  
letting your property?

Our Great Shelford  
team can help!

2019 ★★★★★ **feefo<sup>co</sup>**  
**Gold Trusted Service Award**

Call: 01223 800860  
or Email: [shelford@rah.co.uk](mailto:shelford@rah.co.uk)

## LAY ELECTRICAL Sales and Repairs

*Washing  
Machines,  
Vacuum  
Cleaners,  
TV, Video,  
etc.*



**66 High Street  
Great Shelford  
01223 842488**



## TIM PHILLIPS & Co Ltd Accountants

Independent, specialist service for:

**Small Business  
Self Assessment  
Personal Taxation**

FREE initial consultation – NO OBLIGATION  
Easy to find us – map on website. **FREE PARKING**

**Copley Hill Business Park**  
*Off A1307 between Wandlebury and Babraham*

**01223 830044**

[info@TPaccounts.co.uk](mailto:info@TPaccounts.co.uk) [TPaccounts.co.uk](http://TPaccounts.co.uk)



Great Shelford  
Free Church

## THE CROWNING OF A KING.

May 2023 will be an historic month; one that will be remembered for years to come. As we celebrate the coronation of King Charles III we will experience something that the majority of us have not witnessed before and that some of us may not expect to see again in our lifetime. There will be celebrations and parties up and down the country and many thousands will throng to the capital to line the streets, hoping to witness something of the spectacle and get a glimpse of our newly crowned King. I imagine there will be much flag waving and shouts of 'Long live the King' will ring out as he passes by.

During the coronation ceremony the King will be crowned with St Edward's crown, spectacularly bejewelled and will be handed the Sovereign's sceptre and orb. The sceptre is a longstanding symbol of temporal power but one which represents justice and mercy. When it is presented, the King will be reminded of his responsibility to 'punish the wicked, protect and cherish the just and lead his people in the way they should go'. The orb, depicting a cross over a globe, is a symbol of the sovereignty of Christ. As it is presented the monarch will be reminded that the 'whole world is subject to the Power and Empire of Christ our Redeemer.'

As I write of these things, I am reminded that only a few weeks ago we were remembering and celebrating a time, two thousand years ago, when people thronged the streets, waving palm branches, with shouts of 'Hosanna' to welcome and proclaim a coming king. Jesus rode into Jerusalem to praise and adulation as a king but was crowned with a crown of thorns and then crucified. Today as Risen Lord, Christians all around the world recognise Jesus as a King whose kingdom will never perish. The Kingdom of God is an eternal kingdom where Jesus, the King of Kings will reign supreme over heaven and earth and he leads his people in the way they should go if they choose to follow him.

What a joy it is for those of us who accept Jesus as Lord and King, to know there is a guaranteed place for us in that kingdom, as co-heirs with him, and where one day 'we will reign with him.' (2 Tim 2:12)

For now, as we celebrate the coronation of King Charles III and acknowledge him as our earthly monarch, let us remember to pray for him, that he will be a good king and wise leader, but let us not forget the one who reigns above all as King above all Kings – the Lord Jesus Christ, who loves each one of us as his own children and may we all experience his blessing on us in the days to come.

*Diana Parr Acting Pastor*



## Managing Your Property Renovations

# Rebecca Orde LTD

I help clients in Cambridge and surrounding areas renovate their homes. I will guide you through the whole process from concept to completion, taking away all the stress that comes with undertaking a building project.



☎ 01223 782125 🌐 [www.rebeccaorde.com](http://www.rebeccaorde.com) ✉ [info@rebeccaorde.com](mailto:info@rebeccaorde.com)

## SIMON SPARROW

### CARPENTER AND JOINER

22 Woollards Lane  
Great Shelford  
Cambridge CB22 5LZ  
Tel: 01223 842380



## D Hatter The Gas Specialist



Carbon Monoxide Kills  
75% of last year's poisonings  
were due to lack of servicing!  
.....

D Hatter, specialist in servicing,  
repairs and installation of  
DOMESTIC gas appliances  
including boilers, fires  
and cookers.  
.....

Improve efficiency, save fuel,  
give your central heating  
system a new lease of life,  
have it POWER FLUSHED.

t: 01223 844866  
m: 07747 444 435  
e: [davidhatter1@aol.com](mailto:davidhatter1@aol.com)  
w: [thegaspecialistltd.co.uk](http://thegaspecialistltd.co.uk)



**angli-EAR**  
Hearing & Tinnitus Solutions

## Hearing services

Our services include:

- Diagnostic testing
- Hearing aids
- Tinnitus treatment
- Earwax removal
- Cochlear implants
- Paediatric care
- Balance & Vestibular



BOOK YOUR  
**FREE**  
EAR HEALTH  
CHECK TODAY



Regulated by  
**Q** Care Quality  
Commission

Audiology House, 15 Woollards Lane,  
Great Shelford, Cambridge CB22 5LZ

01223 661 399 • [www.angliearhearing.co.uk](http://www.angliearhearing.co.uk)

## Regular Events at Great Shelford Free Church

**Sunday Services:** 10.30am, all welcome.

Please note that there will be a Combined Coronation Service on Sunday 7 May at 10.30am at St Mary's Church, Great Shelford.

**Café Church:** Sunday 21 May at 10.30am. Informal service where refreshments are served around tables.

**Open Space:** Sunday 28 May: 3–4.30pm. Outdoor Family Event held in the outdoor area behind Cara Coffee Shop. Pentecost themed!

**Community Café:** every Monday, 10am–12 noon. Please note that there will be no Community Café on bank holidays.

**Little Steps Toddler Group:** every Wednesday, 10–11.30am. Term time only.

**Tiny Toes Baby Group:** every Wednesday, 1.30–3pm. Term time only.

*Margaret Cletheroe, GSFC Administrator*

## OPEN SPACE

A place for families to have fun and explore faith together outdoors.



**Sunday 28 May 3pm to 4.15pm**  
**behind Cara Coffee Shop**  
**Exploring faith through Pentecost activities**

Open Space is a collaborative venture between Great Shelford Free Church and St Mary's Church, Great Shelford. There will be activities to do, things to discover, games to play and opportunity to share and grow in faith with one another. Refreshments provided.

If you are a family with children, do come along and join us and find out more. Everyone Welcome!

### Future Dates

Sunday 25 June – St Mary's Churchyard  
 Sunday 23 July – Behind Cara Coffee Shop

## SQUARE AND COMPASSES REOPENS WITH HANS AND JUSTINE

We're delighted to see the Square and Compasses has reopened again following its closure earlier in the year. Hans and Justine have been in the pub trade for about 12 years. They have two children of 16 (at Linton Village College) and 18 (at Long Road) who will be part of the family operation, together with two German Shepherd Huskies.



Hans and Justine have both worked in pubs all their lives, starting with part time jobs while still at school. Justine went to school in Bishop's Stortford and Hans is a West Country boy, but came to East Anglia after university. They actually met at the Crown in Linton, where Justine was working at the time as the manager. They first took on a pub together in 2010 in Balsham and then later moved to Ashdon. Their tenure at the pub there was interrupted by Covid, since when Hans worked as a courier and deliverer for Noel Young Wine and Justine worked for Granta Medical, delivering prescriptions around the villages.

Now the time feels right to take on the Square – it's a pub that has been a splendid venue in the past, and the timing and location are right for them as a family, says Hans. They want the pub to be child and dog friendly and part of the community and their plans prioritise evolution rather than revolution. They don't plan to make major changes to the drinks on sale but have a special interest in cask ales and were in the Good Beer Guide throughout their tenure in Ashdon. The kitchen is awaiting some new equipment, but they hope to start serving meals soon – traditional pub fare and reasonably enough priced that people can come out on a whim, but still feel it's a special occasion. There will be food at lunchtimes from Wednesday to Sunday and evenings except Sunday. Their new Facebook page can be found at 'The Square & Compasses' and at present, whilst waiting for the issue of a new telephone number, the pub can be contacted for bookings on [squareandcompasses@btconnect.com](mailto:squareandcompasses@btconnect.com).

We're happy that the lights have come on again at the Square and wish them every success.

*Judith Wilson*

**Recruitment Specialists**  
for the Built Environment



**Jobs & Career advice in:**

**Technical Moves**

- Land, Development & Property
- Surveying & Project Management
- Architecture & Planning
- Civil & Structural Engineering
- Executive Search, Construction, MEP

**01223 845333**

**technicalmoves.com**

Great Shelford based since 2012

## DAVID FOX CARPENTRY

*Purpose-made  
joinery and fitted  
furniture*

Unit 4 Granta Terrace  
Stapleford  
Cambridge

**01223 845143**

### FOOT PROBLEMS?

**Celia Kenney**

(HCPC Registered Podiatrist)

**Call 07939 227195**

(For home appointments)

Treatments cover:

Nail cutting and other nail  
conditions

Corn and callus  
removal/reduction

Fungal infections and  
athletes foot

Verrucae/warts

The Beechwood Practice

Cambridge CB2 1NT

**Call: 01223 315541**

*Bespoke  
Curtains  
& Blinds*

**01223 836498**



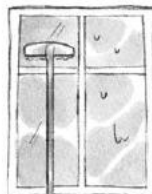
**suecrowcurtains.com**

## CAMBRIDGE

WINDOW CLEANING

*Working in & around Cambridge*

- Exterior & Interior Windows
- Conservatory Roofs
- Gutter Cleaning
- Pressure Cleaning,  
Paving, Patios & Drives
- Tile Roof Cleaning &  
Moss Removal



**Tel. 07942780601**

**Email. info@cambridgewindowcleaning.com**



*Great Shelford Country Market*  
*invites you to join us*  
*in celebrating the Coronation of*  
*Their Majesties*  
*King Charles III & Queen Camilla*  
*on Wednesday 3<sup>rd</sup> May*  
*from 9.00am until 12.00noon*

### **The Friends of Great Shelford Parish Church**



### **Annual General Meeting**

**Wednesday 10 May at 7.30pm    St Mary's Community Room**

All are welcome!

## SHELFORD SCHOOL

There is a unifying theme to the events reported on for this month's update from school: **FRIENDSHIP**. What could be more unifying than the theme of friendship and what theme sits better with the school vision?

*We live and work in harmony  
with love for one another  
so we can achieve our potential  
within a community of life-long learners.*

This month had already seen a Europe Day celebrated by Year 4 – complete with flags, local food delicacies and instruction in Greek dancing. It was a good reminder of friendship extending across the Channel, at roughly the same time as publicity hit the school for the visits to and from Verneuil, resuming this summer term after Covid.

Then on Friday 24 March, former staff and parents of former pupils visited the school for a commemorative ceremony for the Friendship Bench in memory of Ken Starling, Headteacher from 1975 to 1988, who died in December 2021.

School council members had heard about Mr Starling's love of teaching woodwork and concluded that a Friendship Bench would be a suitable memorial. A local carpenter crafted the bench, with generous donations from local people. Visiting artist Hannah Hutchings helped pupils decorate it before an unveiling ceremony, complete with countdown. The bench can comfortably seat four friends.



One other friendship to be recorded is the friendship of science and faith, since they often feature side by side at Shelford School and both have been celebrated enthusiastically in the last month.

Science, technology, engineering and maths have been prominent in the STEM fortnight, with different local scientists visiting school, covering themes like DNA, biodiversity and moths (who apparently sometimes have very long tongues).

Then for the last week of term (admittedly a few days ahead of the worldwide church) it was time for Shelford Holy Week – a sustained look at the last week of Jesus' life, climaxing in his death and resurrection. There was a Palm Sunday celebration in St Mary's Church, an assembly about the Last Supper, interactive trips for different classes to St Mary's and Shelford Free Church, then on the last day of term an Easter Celebration at All Saints for the whole school.

Easter is all about new beginnings – and summer term at school will be under way on Monday April 17.

*Revd Simon Scott – ex officio governor.*

## **MIKE PADUANO MEMORIAL PARTY**

To celebrate Mike's life, his family are holding a memorial party at Little Shelford Pavilion on Sunday 4 June from 2–4pm.

Anyone who would like to come along is welcome.

## **NOTE**

The *Great Shelford Village News* is published by the Editorial Committee, whose members are delighted to receive the many regular and occasional contributions that make it all possible.

The Committee accepts such contributions in good faith, but cannot take responsibility for the accuracy of information contained therein. The views expressed are those of the contributors and do not necessarily reflect those of the Editorial Committee. The Committee, of necessity, reserves the right to amend or reject items, for a variety of reasons. In these cases (unless the changes are minor), every reasonable effort will be made to contact the contributor to obtain agreement.

*Editorial Committee*



## THE FULBOURN CAT SITTING COMPANY

Operating in the Cambridge area, we offer in-home cat sitting based on your cat's individual needs, giving your feline companion safety, comfort, and familiarity of their own surroundings.

Our aim is to provide professional, reliable, and loving care.

We are fully insured, trained, DBS-checked and NarpsUK-registered.

E-mail: [info@thefulbourncatsittingcompany.co.uk](mailto:info@thefulbourncatsittingcompany.co.uk)

Tel: Laura 07742969374 | Chloe 07704207560

Web: [www.thefulbourncatsittingcompany.co.uk](http://www.thefulbourncatsittingcompany.co.uk)



## TM Electrical SERVICES

The Complete Electrical Service

Local - Experienced - Competitive

E: [enquiries@tm-electrical.com](mailto:enquiries@tm-electrical.com)

[www.tm-electrical.com](http://www.tm-electrical.com)

38 Cheddars Lane, Cambridge CB5 8LD

Tel: 01223 441111

FREE ESTIMATES



## Carpet, Upholstery, Fine Rugs, Stone Floor Cleaning, Wood Sanding

*"We were very satisfied with the technician and the way the carpets were cleaned. He was very polite and phoned to say he was coming and again later to let us know he would be with us shortly. Thank you for your services."* **Mrs Burling**

Call today  
**01223 863632**



Please  
quote  
Great  
Shelford  
Mag

Art of Clean, Denny Lodge Business  
Park, Ely Road, CB25 9PH  
[www.artofclean.co.uk](http://www.artofclean.co.uk)

# THE GOG

FARM SHOP  
ESTD · CAMBRIDGE · 1919

BUTCHERY · DELICATESSEN · GROCERY · CAFÉ

**WWW.THEGOG.COM**



# Shelford Feast 2023

Tickets online and from local retailers

Come to every event with a weekly ticket (£95) or both Saturday events with a dual ticket (£48)



Saturday 1 July	<b>Beer Festival</b> 12 noon – 6 pm; food available	Free entry
	<b>Judge Jules: Live</b> 10-piece live band with Judge Jules	Adult: £26 Child: £13
Sunday 2 July	<b>FEAST DAY Family day out!</b> Food, drink, music, events, stalls From 12 noon	Entry by programme £2.50
Monday 3 July	<b>Dance event</b> Children from local dance groups perform	Adult: £7 Child: £3
Tuesday 4 July	<b>Sawston Youth Drama</b> Songs from their recent musicals	Adult: £10 Child: £5
Wednesday 5 July	<b>Comedy Night</b> Big names from the world of comedy	Adult: £18 Over 16's only
Thursday 6 July	<b>Big Quiz Night</b> Teams of up to 8; food included	Adult: £15 Child: £8
Friday 7 July	<b>The Amy Winehouse Band</b> Fronted by Bronte Shande	Adult: £21 Child: £10
	<b>Classical Concert</b> Classical wind quintet, Phoenix Winds	Adult: £10 Child: free
Saturday 8 July	<b>Trevor Nelson</b> Live DJ set with the Radio 2 legend	Adult: £26 Child: £13

[www.shelfordfeast.co.uk](http://www.shelfordfeast.co.uk)



TAYABALI & WHITE  
ACCOUNTANCY & TAX CONSULTING



## DIARY MAY 2023

Date	Event	Time	Place
3	Country Market Coronation Celebration	9am	Memorial Hall
7	Coronation – Family Fun Day o	tba	Recreation Ground
9	Granta Flower Club	7pm	Memorial Hall
10	Cactus & Succulent Society	7pm	Memorial Hall
10	Friends of Parish Church AGM	7.30pm	St. Mary's Community Room
12	Twinning Assoc. Quiz Night	7.30pm	Free Church Hall
15	2G3S	10am	See page 38
15	Organic Gardeners Group	7pm	Cox's Close Community Room
20	2G3S Nature Walk	2pm	See page 38
22	Village Market	10am	Memorial Hall
24	Engage Talk	2pm	Shelford Library
<p style="text-align: center;">Wednesdays: Country Market 9am–11.30am  Tuesdays: Dr Bike at Stapleford Slaughterhouse 3pm–5.30pm</p>			

	<p><b>BIN COLLECTIONS IN MAY</b></p> <p>Black bins                      Wednesday 3, Tuesday 16 &amp; Tuesday 30  Blue and Green bins      Wednesday 10, Tuesday 23</p>
	<p><b>POST BOXES</b></p> <p>Coppice Avenue, Mill Court (Hinton Way), Library, Old Vicarage, Church St, High Green bus stop, Stonehill Road, Macaulay Avenue.</p> <p>The latest collection from Priority Post Boxes is 5pm Monday to Friday, 11.30am Saturday.</p>
  	<p><b>POST OFFICE</b></p> <p>The Post Office is at Kash Stores, 35 Hinton Way.</p> <p>Open Monday–Friday 9am–5.30pm, Saturday 9am–1pm.</p> <p>Items that Royal Mail is unable to deliver (too big, signature required, etc) will be returned to the Royal Mail Depot in Clifton Road for collection, or redelivery arrangements made.</p>
	<p><b>LIBRARY</b></p> <p>Monday 3–7pm, Tuesday 10am–1pm &amp; 2–5pm, Wednesday 10am–1pm, Friday 10am–1pm &amp; 2–6pm, Saturday 10am–1pm.</p>

## NEIGHBOURHOOD PLAN UPDATE HAVE YOUR SAY NOW!

There are only three things in life that are certain: death, taxes ... and that development will be coming to Stapleford and Great Shelford.

We can't stop development, but we can shape it to meet our community's needs, protect the things we value and improve the less good bits. Regular readers will know that we can do this through legal powers given to us in Neighbourhood Planning.



OUR NEIGHBOURHOOD PLAN  
**Stapleford and Great Shelford**  
We can shape the place where we live

[www.greatshelfordparishcouncil.gov.uk/SGSNPlan](http://www.greatshelfordparishcouncil.gov.uk/SGSNPlan)

Building on an initial opinion survey in 2022, a group of Stapleford and Great Shelford residents and parish councillors has drafted a vision for our villages in 2040 and actions we could take to realise it.

There are lots of other things we'd like to understand residents' views on too, including our proposals to protect locally valued vistas and green spaces, meet local housing needs, improve biodiversity, enhance access to our surrounding countryside and expand our active travel network.

We need to know if we've got all these things right before we start work on the legally binding policies against which all planning applications for our area will be assessed.

**Please give a few moments to help shape the place where you live.**

The survey is open until 28 May 2023 – you can find it online or pick up a hard copy at a pop up event or at Great Shelford Library. Three lucky dip winners will each receive a £50 voucher as thanks for taking part.

As of the date of this issue's publication, there is still one pop up event to run. Come and see our display and talk to us at: Stapleford Pavilion, 4 May, 7.30pm

*Jenny Flynn*  
*Chair of Stapleford and Gt Shelford Neighbourhood Plan steering group*

## GOODBYE TO KASH



After 26 years of running the shop on Hinton Way Kash and Jaysri are standing down.

The shop, opened by Mrs Rayment shortly after the Second World War, began as a car showroom and later became one of the first small self service shops in the area. Many readers will remember that for a while a hairdresser *HairForce One* was next door and, in the cellar, a horse equipment shop, *Tack 'n' Togs*.

It is also memorable for having been run by Jerry Brown for many years. Jerry's father, Basil,

had been the village newsagent based where Forum House is now and years later, Jerry obtained permission to make the Hinton Way store a newsagent as well as a general store.

Prakash and his wife bought the shop from Mrs Rayment and the business from Jerry in March 1997 and have worked very hard ever since to provide everything a general store can offer. They have contributed enormously to our village, providing a good natured and efficient service. In 2007 they knocked into the adjacent shops to create a bigger store and more recently incorporated a Post Office, an essential service which has been invaluable for a village which has lost all its bank branches.

Kash and Jaysri have at last the opportunity to take time off for themselves and while continuing to live in the village they are making plans to travel, to revisit family in India and to enjoy a holiday together – the first in many years.

And so we welcome the new shopkeepers, Nish, Tarak and Harry. Running a store is very much a full time job with long days spent in the shop and little time at home so while Kash takes a rest and Jaysri supervises the Post Office for a while longer, the three newcomers, Nish, Tarak and Harry, are ready to greet you in the Great Shelford Convenience Store. Watch out for extended opening hours!

*Duncan Grey*

## WI

In our meeting, which was a week later than usual due to the Easter holiday, Jason Middleton talked about the history of jewellery. He was an excellent speaker and in his fascinating and informative talk shared his passion and knowledge of gemstones and jewellery through the ages.

Early humans created jewellery from shells, wood and stones to adorn themselves. Hong Kong is today the commercial centre for precious gemstones and diamonds and in his short time with us, Jason was able to inform us how the minerals deep in the earth's core can be shaped, polished and used as symbols to represent love, beliefs and superstitions, religious icons and fertility, as well as wealth and status as seen in the amazing Fabergé eggs. Jason recommended a visit to the Victoria and Albert Museum and the British Museum, where entrance is free and many examples of these exquisite rarities are displayed. Many of us felt inspired to take a visit to London and look for our hallmarked treasures.

On Sunday 7 May, afternoon tea will be on sale at the Pavilion from 12 noon to 3pm in aid of the replacement clock on the Memorial Hall. The WI would be delighted to receive donations of cakes, which may be left at the Pavilion from 11am.

*Rosemary Livings, President*

### CAMBRIDGE CAKE CREATORS



Our May meeting will be on Thursday 18 May at 7.30pm in the Jubilee Pavilion, Stapleford.

We will be introducing Rachel from Prestige cakes.

Rachel will be demonstrating 'Lambeth' style piping in buttercream and/or royal icing. This is a new technique, and hopefully we will all learn something from it.

Cost: £10 per visit, Members: £5.

All abilities welcome, you just need to have an interest in baking.

For more information email [vanda.butler@googlemail.com](mailto:vanda.butler@googlemail.com) or phone 01223 561053.

**Beach holidays, City breaks, Honeymoons, Weddings abroad, Adventure holidays, Ski, Cruise, Tailormade trips, Flight only, Car hire, Airport hotels and parking and much more...**

## CHERYL HARRADINE

Travel Counsellor

01223 842670

cheryl.harradine@travelcounsellors.com

www.travelcounsellors.co.uk/cheryl.harradine



Travel Counsellors ensures complete financial protection on every booking

travel counsellors



## WATERLILIES

SKIN CLINIC • BEAUTY

Call 01223 844700 Book online at [www.waterlilies.org.uk](http://www.waterlilies.org.uk)

2d Dolphin Way, Off London Road, Stapleford, CB22



QUALITY FLOORING SUPPLY,  
INSTALLATION & AFTERCARE

## Specialists in Wood Flooring, Carpets & Vinyl Flooring Solutions

*"We've had a vinyl floor fitted in a loft bedroom. Sam and Nigel were excellent throughout. The whole experience was made very stress free due to their professionalism and the floor looks amazing. I would not hesitate to recommend The Art of Flooring."*

Juliet Mills, Cambridge

**01223 755 802**

Please quote Great Shelford Mag



141 Milton Road Cambridge CB4 1XE  
[www.ArtofFlooring.co.uk](http://www.ArtofFlooring.co.uk)



**THE PLOUGH**  
**2 HIGH STREET**  
**GREAT SHELFORD**  
**CAMBRIDGE CB22 5EH**  
**01223 847986**

**Live Sports~Pool Table~Darts**  
**Cask Ales~Patio Garden**

**Food Vans**  
**Mon-Wed 5pm to 8pm**  
**Home Cooked Food**  
**Thurs-Sat**



**Find us on Facebook**



## THE MAGOG TRUST MORE TRUSTEES WANTED

For more than 30 years, the Magog Down has provided the local community with a site of quiet recreation combining opportunities for exercise and dog walking. In addition, rare and threatened species of flora and fauna have been re-established on the chalk downland. All of this has been achieved through the efforts of many Volunteers and Friends over the years.

The Trust is now looking to expand and refresh its Board of Trustees, to continue the maintenance of the site whilst also meeting future challenges such as climate change and urban growth. We are particularly keen to recruit local people who know and love the Down.

If you are interested, please contact the Chairman, Chris Bow, on 07711 417900 or email [admin@magogtrust.org.uk](mailto:admin@magogtrust.org.uk) for a confidential conversation without commitment.

### **Pasque flowers and cowslips**

Some of our first spring flowers.

The bright yellow cowslips thrive in the chalky soils of Magog Down. They can be seen in the meadows during April and May.



## THE BRITISH CACTUS AND SUCCULENT SOCIETY

Our next monthly meeting will be held on Wednesday 10 May in Great Shelford Memorial Hall at 7 pm and we look forward to welcoming anyone interested in cacti and succulents.

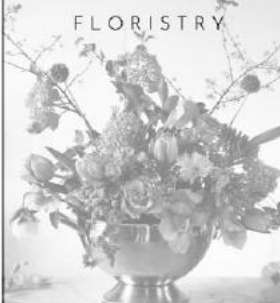
There will be an exhibit table top competition judged by a local expert as well as plants for sale, a raffle and refreshments. Also a selection of short presentations from Branch members on a subject of their choice including cultivation techniques, favourite plants and greenhouse tours.

We are a friendly group of cacti and succulent enthusiasts. Please do come and see what we grow, discover how and why we grow them and learn more about these unique and fascinating plants.

*Jacqui Arbon*

# TWIGS

FLORISTRY



twigsfloristry.co.uk  
hello@twigsfloristry.co.uk

**ENTIRE GROUP**   

300007

**The Complete Gas Heating and Plumbing Company**

**Plumbing • Heating • Gas  
Bathrooms • Water Softeners  
Property Maintenance**

**Tel: 01954 204044 • Web: [www.entiregroup.co.uk](http://www.entiregroup.co.uk)  
Email: [service@entiregroup.co.uk](mailto:service@entiregroup.co.uk)**



**COACH HOUSE HEALTH CARE**

**Welcome to Coach House Health Care**  
— a refurbished and renovated clinic, situated in the grounds of Anstey Hall, where you can now find all your health and well-being practitioners under one roof.

Our qualified, experienced practitioners offer treatments in the following areas:

- Podiatry/Chiropody
- Physiotherapy
- Osteopathy
- Sports Massage
- Psychiatry
- Clinical Psychology
- Non-Surgical Cosmetic Treatments
- Plastic Surgery Consultations, including skin lesion assessments
- Consultant Dermatology
- Microsuction Ear Wax Removal
- Clinical Hypnotherapy
- Thread Vein Removal using Veinwave
- Medical Aesthetics
- Plastic and Cosmetic Surgery

 *Animesh Patel, Plastic Surgeon and co-owner*  
 *Lorna Bacon, Podiatrist and co-owner*

**COACH HOUSE HEALTH CARE**  
The Courtyard, Anstey Hall, Maris Lane,  
Trumpington, Cambridge CB2 9LG  
**01223 340491**  
[reception@coachhousehealthcare.co.uk](mailto:reception@coachhousehealthcare.co.uk)  
[www.coachhousehealthcare.co.uk](http://www.coachhousehealthcare.co.uk)  
Free car parking and wi-fi

**CLINIC ROOMS AVAILABLE TO RENT**  
If you are a qualified practitioner, looking for a clinic to practice, contact us to find out how to join our team. We can now support CQC registered clinicians to use us as a location for their CQC registered procedures.



**JASON KIRBY**  
*Professional Painting  
& Decorating Ltd*

*A Professional Service  
from Start to Finish*

**Tel: 01954 211775**  
[www.jasonkirbyltd.co.uk](http://www.jasonkirbyltd.co.uk)

**H.R. MILLEN LTD**

**Training Facilitator**



**First Aid**  
\*CPR \*Control of bleeding  
\*Defibrillation  
and much more...

For more information call:  
**01799 531 100**  
or email:  
[office@hrmillen.co.uk](mailto:office@hrmillen.co.uk)



## BETTER WAYS 4 BUSWAYS UPDATE

The BW4B! campaign has been energised by Greater Cambridge Partnership's proposed destruction of a 100 year old orchard in Coton to make way for a south western busway. How can our own County Councillor support this environmental travesty? With articles in the national press – *The Guardian* and *The Times* – the GCP and County Councillors who voted in support of the scheme have come in for an awful lot of well deserved flak.

What is so outrageous is that the GCP's business case for its busways openly states that the economic loss attached to them is justified by the uplift in surrounding land values, because neatly carved up parcels of agricultural land can then be sold off to developers. This is a clear statement that our countryside and greenbelt have to be concreted over by the GCP to make it all work and is the real reason why they are pursuing such mind blowing expensive projects when cheaper and more efficient alternatives exist!

Please come to Stapleford's Annual Parish Meeting on Thursday 4 May at 7.30pm at the Stapleford Jubilee Pavilion where James Littlewood, CEO of Cambridge Past Present and Future, will give an update on the busway and the on road alternative that actually offers better accessibility to Addenbrooke's than the GCP's route. Our MP, Anthony Browne, who is supporting campaigns against the GCP's busways, will also be attending.

*We need your support!* We have a great Steering Group of people with different backgrounds and skills, but we are stronger as we grow. If you want to have a voice in all this, please get in touch with us; you will be made very welcome, whatever you can contribute.

And if you need more information, take a look at [www.bw4b.org](http://www.bw4b.org), follow us on Twitter (@BetterBusways) and Facebook (Better Ways for Busways), or email [hello@bw4b.org](mailto:hello@bw4b.org).  
*Howard Kettel*

## CAMBRIDGE FLOWER CLUB

NAFAS AFFILIATED

We meet at the Memorial Hall, Mill Lane. Whittlesford CB22 4NE on third Thursday evenings. Refreshments from 6.45pm. Demonstration at 7.15pm. New members welcome! Visitors pay £8.00.

18 May **NAFAS demonstrator Daphne Grant – 'Forgotten Treasures'**

15 June **Garden visit**

20 July **NAFAS demonstrator Crystall Dyball – 'Up the Garden Path'**

For more information or to enquire about joining Cambridge Flower Club, please phone Freda Orgee on 01223 891464 or email [fredaorgee@gmail.com](mailto:fredaorgee@gmail.com)

## JOHN CLITHEROE



I am sorry to share news of the sad passing peacefully in Scotland, of John Clitheroe on Saturday 25 March 2023. John was born in Great Shelford and lived in Coppice Avenue for much of his life before moving to Foxton about 20 years ago following the passing of his wife, Jill.

John, like his parents, was a familiar face around the village and was very proud of the community. He attended Stapleford primary school and Sawston secondary school before working his entire life with the local electricity generating board. John raised his family in Shelford - son Andrew, late daughter Julie and grandsons.

During the pandemic, John went to stay with his son in Scotland. Unfortunately, due to declining health, he moved to the Inchmarlo nursing home during 2022, which is where he passed aged 88. His funeral was held at Cam Valley crematorium on 17 April.

*Andrew Clitheroe (John's son)*

## ORGANIC GARDENERS' GROUP

Our new South Cambs Organic Gardening Group met for the first time in April. We were 16 keen organic gardeners, with lots of ideas about what we'd like to do in future sessions. Our next meeting will include a session on seeds and seed sowing, and a look at the growing season so far (weather, of course, being a major topic!). In June and July we hope to hold outdoor meetings.

If you would like to join us, please come along.

**When: Monday May 15 at 7pm.**

**Where: Cox's Close Community Room.**

Future dates: Monday June 12, Monday July 17.

For more information, contact Helen Harwood, phone 840393, email [helen\\_harwood\\_uk@yahoo.co.uk](mailto:helen_harwood_uk@yahoo.co.uk),

*Helen Harwood*

**Gavin Langford Architects**  
[www.gavinlangfordarchitects.com](http://www.gavinlangfordarchitects.com)



Chartered Practice

The Great Shelford Village News is unable to check or verify the warranties or representation made by their advertisers and must therefore exclude any liability whatsoever arising from any advertisement in the News magazine, nor do any statements necessarily accord with the views of the editors.

*Great Shelford*  
*Solicitors*



**DAVIES**  
 solicitors advocates & mediators

- Family
- Divorce & Separation
- Children
- Civil Disputes
- Wills & Probate
- Estate & Tax Planning
- Powers of Attorney
- Court of Protection

*For a quality and attentive service*

Please Call: **01223 842211**

[www.daviessolicitors.co.uk](http://www.daviessolicitors.co.uk) [law@daviessolicitors.co.uk](mailto:law@daviessolicitors.co.uk)  
 30 Woollards Lane, Great Shelford, Cambridge CB22 5LZ

*Free and easy parking*

**MegaStorage**

SAFE & SECURE SELF STORAGE

**Self Storage in Sawston**

**Clean, Dry & Secure, 24/7 Access**

 **ssa** self storage association United Kingdom

[www.MegaStorage.co.uk](http://www.MegaStorage.co.uk)

**01223 833 777**



## LIBRARY NEWS

### FOR CHILDREN

**Story and Rhyme Time** Tuesday 2 May and Tuesday 16 May at 10.30 am  
For children aged 0–4 years. Come and enjoy stories and rhymes led by our wonderful volunteers. This is a free drop in event. Parents and carers, please stay with your children.

**Lego Club** Monday 15 May 4.30–5.30pm Suggested donation £1.00.  
Come along and have some fun making LEGO models. All materials provided. Parents and carers, please stay with your children.

**Lego/Duplo**, Wednesday 31 May, 2.30–3.30pm. £2 per child. Ages 2+.  
Please book in the library or email (see below).

### FOR ADULTS

**Author Talk by Matthew Green** Wednesday 3 May 2–3.30pm  
Drowned. Buried by sand. Decimated by plague. Explore the forgotten history of Britain's lost cities. Matthew will be talking about his book *Shadowlands: a journey through lost Britain*.

Tickets £5.00. Please book in the library or by email (see below).

**Engage Talk: The Western Front Alliance** Wednesday 24 May 2–3.30pm.  
Emrys Jones will explain how he became a battlefield guide, leading tours of the Western Front. A donation of £2 is appreciated. Please stay for a drink after the talk. Please book in the library or by email (see below).

Did you know that Cambridgeshire Libraries offers a Library at Home service for readers who find it difficult to get to the library? A local volunteer can visit monthly at a mutually convenient time, bring library books and have a chat if you'd like. It's a free service. For more information about becoming a Library at Home customer or volunteer, please ask at your local library, or email [volunteers@cambridgeshire.gov](mailto:volunteers@cambridgeshire.gov)

**Opening hours:** see page 24

**Contact details:**

Telephone: 0345 045 5225

Email: [Cambourne.referral@cambridgeshire.gov.uk](mailto:Cambourne.referral@cambridgeshire.gov.uk)

Website: [www.cambridgeshire.gov.uk](http://www.cambridgeshire.gov.uk)

Mel Abbiss

## Care For Trees



Qualified  
Reliable  
Insured  
Affordable

For a free quote call **Mike Wallman** on 01223 846390 or email [info@carefortrees.co.uk](mailto:info@carefortrees.co.uk)

FAMILY **Barker Bros** BUTCHERS  
EST. 1841



Packaging  
Free  
Vegetables  
now on  
Sale

**QUALITY, LOCAL MEAT FOR EVERYDAY**

43 High Street, Great Shelford

Tel: 01223 843292 [www.barkerbrosbutchers.co.uk](http://www.barkerbrosbutchers.co.uk)

## J M R Electrical



**Electrical  
Contractor**



All Domestic, Industrial &  
Commercial work undertaken

21 Ashen Green, Great Shelford, Cambridge

Email: [jmr.electrical@hotmail.com](mailto:jmr.electrical@hotmail.com)

Tel: (01223) 844680 Mobile: 07766 68 38 86

## QUALITY BESPOKE PICTURE FRAMERS

**SIMON ROBINSON  
& SON**

Professional, Friendly Service  
Over 25 years' experience

Wide Selection of Frames  
Conservation Materials Used  
UV Protective Invisible Glass

Artwork/Photography  
Needlework/Tapestry  
Oil Paintings and  
Canvases Stretched  
Unusual Objects Framed  
Made to Measure Mirrors  
Limited Edition Prints Available

**Tel. 01223 873123**

Opening Hours:  
Tues-Fri. - 9am-5.30pm  
(Saturday - By Appointment)

[www.robinsonframes.co.uk](http://www.robinsonframes.co.uk)  
[lester@robinsonframes.co.uk](mailto:lester@robinsonframes.co.uk)

**STUDIO 6, PENN FARM,  
HARSTON RD,  
HASLINGFIELD, CAMBRIDGE  
CB23 1JZ  
(AMPLE PARKING)**

## HEATWAVE SERVICES



- Qualified to service and repair gas, oil and LPG boilers
- Installation of new central heating systems, unvented hot water cylinders
- Landlord Certificates
- Worcester Bosch Accredited Installer

Whittlesford based company for all your heating and hot water requirements

Tel: 01223 837774 or 07795 304013

Email: [heatwaveservices@btconnect.com](mailto:heatwaveservices@btconnect.com)

15 Maynards, Whittlesford, Cambridge, CB22 4PN

## 2G3S

### Future Dates

**Nature walk** The next walk date is Saturday 20 May, meeting at 2pm at Little Shelford Community Orchard and Woodland. Come and see nature on your doorstep with John O'Boyle, who is very knowledgeable about plants and wildlife. Wear suitable footwear and clothing. Walks are at attendees' own risk.

**Cycle ride** The next one is Monday 15 May. Join us for a leisurely ride on quiet roads and traffic free paths of around 20 miles, to include a coffee stop. Start at 10am at Stapleford Pavilion, returning by about 1pm. Booking essential, at [greener@sawston.org](mailto:greener@sawston.org).

**Book club reminder** Our next book club meeting is in the Rose at 8pm, on Thursday 25 May, discussing 'Forget Me Not' by Sophie Pavelle.

**South Cambridgeshire Organic Gardeners** This is a new club set up by Helen Harwood and we are really pleased it has started. The first few meetings have been at Cox's Close community room in Stapleford, and the next one is at 7pm on Monday 15 May. After that it is hoped to meet at Helen's allotment or at other people's gardens. The sessions will be very informal and friendly, and will include advice and ideas and the chance to swap seeds and cuttings. All are very welcome to come along, whether beginners at gardening, or old hands needing some ideas for gardening in a more organic and wildlife friendly way.

**Dr Bike** The bike repair sessions are now on Tuesday afternoons, not Thursdays as before, and between 3pm and 5.30pm in the Slaughterhouse in Stapleford. They are always in need of volunteers to help out, to keep the sessions going on through the summer.

### No Mow May

A pristine lawn is a pretty sterile environment. As discussed last month, consider giving the lawn mower a rest to allow wildflowers to develop during May, then maybe even let it 'bloom in June'. You may be surprised at the number of nectar producing plants that appear, to the benefit of bees, which are important pollinators for our food plants. The Plantlife charity initiated the scheme and their website gives more details, including the improvements to biodiversity. Note that it's important to remove the cuttings after the flowering season so a thatch does not build up to suppress more delicate plants. To make the area look tidy, you can keep a neat edge around the site by conventional mowing. Look up 'No Mow May' on the internet, or to find out biodiversity gains in detail, look at the Plantlife site.

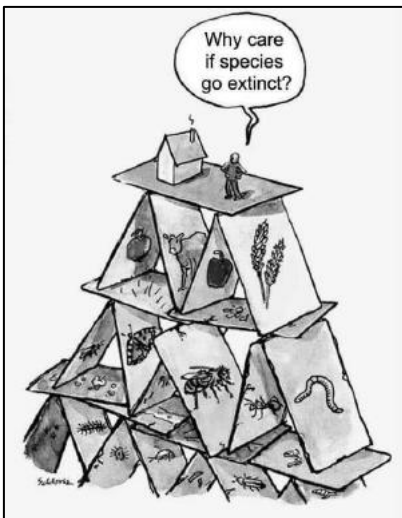
Send in your photos of the wildflowers or insects that you see to our email address, and we can put them on our website or in the village magazines.

## Biodiversity

You may wonder why people talk about wildlife friendly gardening. The area of gardens in the UK is much larger than the area covered by nature reserves, so what we do in our gardens has a big impact on nature and biodiversity. If you liberally use weedkillers and pesticides these will go into the soil and seep into the ground water. Use low key treatments that won't have an impact on other species, or dig weeds out. Allow untidy corners where rotting wood can harbour beneficial insects, and build bug hotels from bamboo, dead leaves, corks and so on. Grow flowers that pollinators love. Come along to the organic gardening group (see above) if you need advice!

More widely, you may wonder why people say biodiversity is so important, as important as climate change. You may think it's irrelevant to you that a few species of insects in South America go extinct. But so many species have been lost or are endangered that the effects can't be ignored. As David Attenborough has said in his excellent series 'Wild Isles', 97% of hay meadows in the UK have been lost in the last 60 years (mainly due to intensive farming) and 60% of Britain's flying insects have vanished in the last 20 years. These losses upset the balance of the ecosystem. Food webs become broken – for example, if there are no caterpillars of the type that a particular migratory bird eats, or they appear so early due to global warming that the bird has not yet arrived back in the UK to breed, then there will be a steep decline in the number of that species of bird.

If nature becomes too fragmented due to loss of habitat then the different parts of the system can't work together, as the parts are all interconnected, like the



different parts of a car – each species is part of the whole system and the whole is much more than the sum of its parts. The illustration shows the balance of the whole system very well. A balanced ecosystem with a variety of habitats and a large number of different species is more resilient to the impacts of climate change. It will soak up carbon and can help to mitigate the effects of temperature rises. The greater the diversity, the more secure all life on Earth is, including us. We need to look at nature based solutions to solve our problems, not assume the Earth belongs to us to do with it what we will.

**COMPUTER PROBLEMS?****Call visualSilicon**

Mike Nettleton has retired and all of the operations of Eagle-Analysis have been transferred to visualSilicon.

We are a friendly team of computer experts local to Cambridge who have many years of experience and are well placed to support businesses and the local community.

We will be looking after your IT issues from 1 April 2023 and are available to help at short notice.

Read more about us at <https://visualSilicon.com/flyer.pdf>

Call visualSilicon on free landline 0800 7720 720

or visit <https://IT.visualSilicon.com>

**SOPHOS**  
Silver Partner



REGISTERED  
**PARTNER**

Ontrack® Data Recovery  
Authorised partner

**The Country Store**

*Pet, Equine, Smallholder,  
Shooting supplies,  
Country clothing,  
Wild bird food*

Unit 12a, Sawston Park,  
Pampisford, Cambridge

CB22 3EE

[www.thecountrystore.co.uk](http://www.thecountrystore.co.uk)

Tel 01223 837977

# D.L.M. AUTOS

63a Orchard Road, Great Shelford CB22 5AA

## MOT - SERVICE - REPAIR

# 01223 844828

[www.dlmautos.co.uk](http://www.dlmautos.co.uk)



**FIRST CARE HOMES**

WHERE CARE COMES FIRST

## The Cambridgeshire Care Home

Situated in Great Shelford, the premier choice for a boutique care home in historic Cambridge. We provide unrivalled care using state-of-the-art technology and offer Dementia, Nursing and Residential care with a fully inclusive service package.

To enquire or book a showround call 01223 551 200 and ask for Yvonne Quigley, Customer Relations Manager.



If you are interested in green matters and the environment at all levels (individual, local, national and international), send an email to [greengroupssss@gmail.com](mailto:greengroupssss@gmail.com) to sign up for our quarterly newsletter, or to get more information about our meetings. We are a friendly group and welcome anyone who wants to come along to one of our events or to find out more about how we can live more sustainably. Also see our Facebook page and our website (type 2G3S into Google and you will find us).

*Helen Hale*

## SHELFORD TWINNING ASSOCIATION FRENCH BREAKFAST

The Twinning Association's latest social event was on 25 March and it was a pleasure to be able once again to organise a French breakfast after the lockdown years. As you might expect, our breakfasts are served with French style food – baguettes, brioches, patisseries, jam and Nutella, hot chocolate, coffee and fruit juice. This year was no exception and by 9 o'clock when the doors of Great Shelford Free Church hall opened, the coffee was brewing and the tables were well piled with croissants, pains au raisin, bread and jam.



People started arriving straight away, with more dropping in steadily throughout the morning. The tables filled as people seated themselves with their *petit déjeuner* and coffee and the food disappeared. It was a very enjoyable occasion, in a warm and lively atmosphere with a constant happy buzz of conversation.

Our next social event is a **quiz evening** which will be held on Friday 12 May – details are on our website ([shelfordtwinning.org.uk](http://shelfordtwinning.org.uk)) or email [twinningsec@gmail.com](mailto:twinningsec@gmail.com).

We are also planning a **wine tasting** event, of seven rosés, to be held on Friday 9 June (again, see details on the website).

And a very important upcoming event of course is our **family group visit to Verneuil** on 1–4 June. Full details from [sarah.haddow@talk21.com](mailto:sarah.haddow@talk21.com).

*Penny Pearl*

# GATWARD & SONS

**BUILDING ON EXPERIENCE**  
CARPENTRY, JOINERY & BUILDING CONTRACTORS

☎ **01223 570 143**

📞 **07525 494 478**

✉ [contact@gatwardandsons.co.uk](mailto:contact@gatwardandsons.co.uk)

**BASED IN STAPLEFORD**

**EXTENSIONS  
CONVERSIONS  
RENOVATIONS  
ALTERATIONS**

## Rainbow Pre-school

A unique place to play and learn in Shelford



A caring community pre-school  
in Shelford for 2-4 year olds  
Open Mon-Fri from 9am to 3pm  
(term-time)

For more information visit  
[www.rainbowshelford.co.uk](http://www.rainbowshelford.co.uk)  
or contact  
[enquiries@rainbowshelford.co.uk](mailto:enquiries@rainbowshelford.co.uk)

Tel: 07985 216603

Manager: Allison Tomlin

## Thomas J Shearing

### Furniture Restoration and Traditional Upholstery

Comprehensive re-upholstery service  
Vast range of furnishing fabrics  
Antique and modern furniture restored

### Picture Framers and Restorers

French polishing and other finishes available  
Bespoke mirrors made to order

Serving Great Shelford and Cambridgeshire  
Tel: 07801 357148 Email: [shearing@mail.com](mailto:shearing@mail.com)



**PANTHER TAXIS**

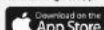
Get out and about and save money with  
**PANTHER TAXIS**

Did you know that we now offer a REDUCED RATE  
village to village service to or from YOUR VILLAGE?



Only pay  
door to door  
not a penny  
more

Find out how much  
you can SAVE by  
downloading our app



With a fleet of over 650 vehicles running  
24/7, you know who to call:

**01223 715715**  
[www.panthertaxis.co.uk](http://www.panthertaxis.co.uk)

Rates are fixed based on the Cambridge metered rates  
to or from the included villages.  
Villages outside of this area may still have a callout fee.

## CHIMNEY SWEEP

**J. L. WIGHT**  
Guild of Master  
Chimney Sweeps

Fully Insured

Advice given / problems  
solved

Certificates issued

**01954 253315**

[www.camsweep.co.uk](http://www.camsweep.co.uk)

9 Cow Lane, Rampton



## Shelford Twinning Association



### Quiz Night

Friday 12 May 2023



**Great Shelford Free Church Hall,  
Ashen Green, Great Shelford, CB22 5EY**

**7.30pm–10pm**

**TEAMS: maximum of 6 people in a team**  
**Individuals/couples also welcome and will be allocated to a team on the night**

**The quiz is open to everyone**

**COST: £12 per head including supper:**  
**fish/chicken/sausage & chips or vegetarian option**

*\*\* for catering purposes, please indicate choice of food when reserving places \*\**

***Please book no later than 5pm on Friday 5 May***

**DRINKS: fruit juice/wine available - donations towards  
the cost of drinks welcome**

*(please don't bring your own drinks as this would break our  
agreement with Shelford Free Church)*

**A RAFFLE will be held on the night**

**To reserve places, either...**

- Email: [colin@frenchfrogs.net](mailto:colin@frenchfrogs.net) giving names and food choices.
- Text/telephone Colin Jefferson: [07957 465033](tel:07957465033) giving names and food choices.

## THE SHELFORD FEAST

The Shelford Feast will be back on Great Shelford Recreation Ground from Saturday 1 to Saturday 8 July. Tickets are available from [www.shelfordfeast.co.uk](http://www.shelfordfeast.co.uk) and from various local outlets: Barker Bros Butchers, Boots, Cambridge Building Society, Days Bakery, Kash Stores, the Navigator, the Plough, Shelford Deli, Searle & Sons and the Three Horseshoes. You can also see our posts on Facebook and Instagram.

We are thrilled that the Stapleford Granary is offering two events as part of this year's Shelford Feast – *Perchance to Dream: the Music of Ivor Novello* at 5pm on 1 July, and *The Mark Crooks Quintet: The Best of American Jazz and Swing* at 7.30pm on 8 July. Tickets are available from the Feast website.

The Shelford Feast Bunch couldn't stage the Feast without sponsors' support of specific events during Feast week and are also very grateful for contributions and donations from 'Friends of the Feast', who are providing crucial financial support to help cover the greatly increased infrastructure and running costs of this year's event. If you can help, please email us at [sponsorship@shelfordfeast.co.uk](mailto:sponsorship@shelfordfeast.co.uk).

We look forward to hearing from you and to seeing you at the Feast!

*Jules White*

## GRANTA FLOWER CLUB

We meet at the Memorial Hall in Great Shelford on the second Tuesday of the month at 7pm. This month we welcomed Amy Jones, a florist from Cottenham. Amy told us how she was just reaching the end of one of her busy periods, not that they seemed to stop! She has just lambed over 180 sheep!

Amy presented her floral designs with the theme 'Branching Out' and used unusual containers recycled from her farm and various other design elements found at farm auctions. A fun, interesting and informative evening. We would love new members to join us, enquiries to [grantaflowerclub@gmail.com](mailto:grantaflowerclub@gmail.com).

Please join  
**Granta Flower Club**  
 at a Floral Demonstration by Kathryn Stan entitled  
*Connections*  
 At Great Shelford Memorial Hall, CB22 5LZ  
 On Tuesday 9 May at 7pm – doors open 6.30pm  
 Tickets £15 (including refreshments)  
 available from Rose on 01954 781 002  
 All welcome

## TRADITIONAL RESTORATIONS

**A FRIENDLY LOCAL SERVICE  
FOR ALL TYPES OF ANTIQUE &  
MODERN FURNITURE**

A complete restoration service:

- All types of furniture repairs
- Traditional French polishing
- Hard-wearing, high-quality lacquer finishes
- A comprehensive re-upholstery service

Over 20 years working in the local area  
Free estimates & advice given on all work

**JONATHAN PORTER**

**5 BABRAHAM ROAD, SAWSTON, CAMBRIDGE CB22 3DQ**  
TEL 01223 835515 MOB 07932 611184



## STEVE the PLUMBER

Steve the Plumber  
is a local plumber  
with a friendly,  
helpful and reliable  
service.  
Small or larger jobs  
undertaken.  
Competitive rates.



Please call 07803922517  
or email  
steve\_the\_plumber@me.com



*Dance Dedication*

- ☆ Classes from 3 years to adults
- ☆ Professional tuition from experienced teachers
- ☆ Dance exams available

dancededicationawston@gmail.com  
www.dancededicationuk.com

- ☆ Ballet ☆ Tap ☆ Jazz
- ☆ Musical & Modern Theatre
- ☆ Contemporary & Street Dance
- ☆ Body Conditioning

Imperial Society of  
Teachers of Dancing  
Registered Member



Free Estimates & Advice

Block paving driveways, patios & paths  
All landscaping services

Self-sufficient with own machinery  
Over 10 years' experience

Free warranties:

- 5 years on workmanship
- 10 years for materials
- Manufacturers' guarantees

**amsbuildingandlandscaping.co.uk**

01638 721893 info@amsbuildingandlandscaping.co.uk



BRADSTONE  
Assured



## ANGLIA TREE CARE

*A O'Connor*

**Tel: 01223 424454**

23 King Street  
Cambridge CB1 1LH

www.angliatreecare.co.uk Email: info@angliatreecare.co.uk

Tree surgery  
Stump grinding  
Hedge maintenance  
Fully qualified & insured

All work carried out to British  
Standard BS3998  
Member of the Guild of  
Master Craftsmen



## OLD NEWS

### Extracts from The Great Shelford Chronicle 1774-1868

*Compiled and re-published by Anne George, Glynis Trundle,  
Margaret Ward and Alan Bullwinkle, 1993*

#### 18 May 1850

NEW VICARAGE – a fine new vicarage, in the very best taste, is being erected in this village.

*[This refers to what is now called the Old Vicarage next to the Church.]*

#### 9 May 1863

DRUNKEN ON RAILWAY LINE – William Moore of Great Shelford was charged by Inspector Kenn with being on the line of the Great Eastern Railway Co., in the parish of Great Shelford, whilst in a drunken state. It was remarked that this case was pressed by the Co. simply for the protection of the public, as they had no feeling in the matter themselves. The defendant was found on the metals at night and only a few days before a person had been killed under similar circumstances on the line, and cases were continually occurring in all parts of the country of people being killed by getting on the lines of the railway while in a drunken state. The station master and another witness proved the charge. The prisoner was laying dead drunk on the “six foot” way, with his head close to one of the metals. Defendant helped to gather up the remains of a man who had been smashed into a hundred pieces on the line: this ought to have been a warning to him. Fined 10s. and 14s. costs: in default of payment a distress.

## CRICKET CLUB

We're looking forward to the new season, and will welcome supporters at any of our matches. The First XI has three home matches this month, on Saturdays 13, 20 and 27, starting at 1pm.

The Rec will also be busy on Tuesday and Friday afternoons with the All Stars and Dynamos groups for 5 to 11 year olds, and on various other days with our youth teams. Here's hoping for fine weather!

*Peter Ede (Chair)*

## TENNIS CLUB

### MEET YOUR COMMITTEE

At the tennis club, summer league matches got under way at the end of April. We have a busy schedule of men's and ladies' matches, with mixed matches starting later in the summer. We held our AGM at the end of March, which saw us say goodbye to some familiar faces on the committee and welcome some new ones in their stead. The first of those is Hilary Gunnell, who takes over from Rebecca as Membership Secretary. Let's meet her now.



**Q: What's your name and where do you come from?**

A: I'm Hilary and I was born and grew up in north London. I went to PE college in Dartford, lived and taught in SE London/NW Kent for 20 years and then moved to Shelford 21 years ago when I got a new job as a trade union official.

**Q: How long have you been playing tennis?**

A: I can't remember exactly when I started playing tennis but it was probably when I went to secondary school. My best friend and I used to play together a lot throughout our teens, although we were only members of a club for one season.

When I finished teaching PE and moved to Shelford I stopped playing altogether until I retired and joined GSTC in 2019.

**Q: Why did you join the committee at the tennis club?**

A: I've been playing at the Club for nearly four years and it's given me a new lease of life. The club is very friendly and welcoming and I have met so many interesting people. I was delighted to have the opportunity to contribute to the running of the Club and am looking forward to my first committee meeting.

**Q: What's the one thing you want readers to know about you?**

A: I am living proof that you can teach an old dog new tricks.

**Q: What's your guilty pleasure?**

A: Eating homemade cake still warm from the oven.

**Q: If you really knew me you would know...**

A: I'm really looking forward to the summer. Although I appreciate being able to play tennis all year round, it's so much more enjoyable when you're not wearing four or five layers of clothing.

If you're interested in joining the club, or you have questions about your existing membership, please contact Hilary on [membership@gstc.org.uk](mailto:membership@gstc.org.uk) or get in touch via the website [www.gstc.org.uk](http://www.gstc.org.uk)

*Angharad Harris (Photo: Pete Gunnell)*

## HOW TO CONTACT GREAT SHELFORD VILLAGE NEWS

We are pleased to receive articles, letters and notices for community events for consideration. Please send by email (preferably as a Word document), or send paper items, with contact details, to Judith Wilson, 11 Elms Avenue, Great Shelford CB22 5LN. The copy date is usually the second Friday of the month. See the *Next Issue* box for next month's date.

For guidance, please note that an article of around 400 words, without a photograph, will fill a full page. Notices for events work best as a half page (half A5) in landscape format.

### General enquiries and articles for publication:

01223 842553 [gsvneditorial@gmail.com](mailto:gsvneditorial@gmail.com)

### Commercial advertisements

These are for a 12 month period, renewed in January. There is a waiting list.  
[gsvnadverts@gmail.com](mailto:gsvnadverts@gmail.com)

**Subscriptions and online payment details** 01223 842993 [gsvnsubs@gmail.com](mailto:gsvnsubs@gmail.com)

### Editorial Committee

Duncan Grey, Bridget Hodge, Marjorie Smith, Judith Wilson.

## JUNE ISSUE OF THE VILLAGE NEWS

The deadline for copy for the next issue of the *Great Shelford Village News* is Friday 12 May and it should be available on Friday 26 May, with subscribed copies delivered shortly thereafter.

## WHAT'S ON IN MAY

A round up of what's on at some of the venues near us. For more information, times, ticket prices and bookings, please contact the organisation. This information has been taken from websites, can be subject to change and the event may already be booked.

	<b>CAMBRIDGE ARTS THEATRE</b>
2 – 6	Home, I'm Darling ( <i>comedy set in 1950s</i> )
10 – 13	Legally Blonde ( <i>musical</i> )
16 – 20	The Beekeeper of Aleppo
28	Something Rhymes with Purple
31 – 4 June	Demon Dentist ( <i>ages 5+</i> )
Telephone: 01223 503333 Web: <a href="http://www.cambridgeartstheatre.com">www.cambridgeartstheatre.com</a>	



**SAWSTON CINEMA**

25	Empire of Light (set in a seaside town in the 1980s)
Telephone: 01223 712825 Web: <a href="http://sawstoncinema.org.uk/">http://sawstoncinema.org.uk/</a>	

**ADC THEATRE**

2 – 6 (7.45pm)	Mnemonic (Experiences of time and place)
2 – 6 (11pm)	Electra: Haimara
16 – 20 (7.30pm)	The Seagull (Chekhov)
17 – 20 (11pm)	Girl Torque
23 – 27	One Man, Two Guvnors
Telephone: 01223 300085 Web: <a href="http://www.adctheatre.com">www.adctheatre.com</a>	

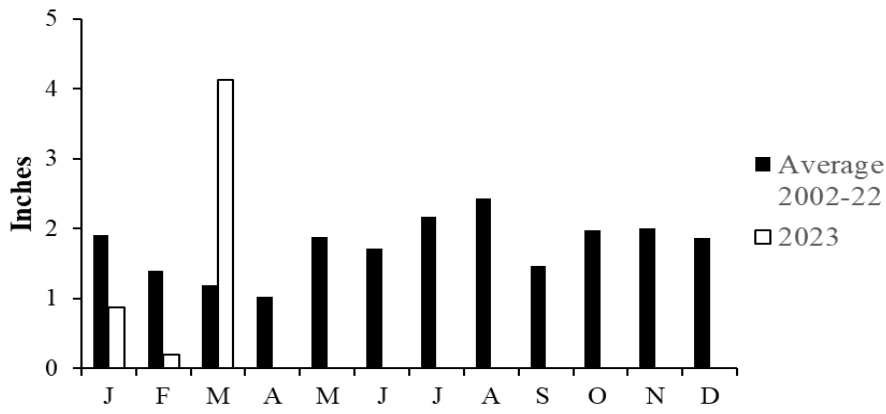
**STAPLEFORD GRANARY**

1	7.45pm	David Preston Quartet <i>Music from upcoming debut album</i>
7	12noon	Janice Burns & Jon Doran <i>Folk music</i>
19	7.45pm	Nancy Kerr & James Fagan <i>Folk music</i>
21	12noon	Joanna Eden Quartet <i>Jazz, soul &amp; blues</i>
26	7.45pm	Lauren Zhang <i>Back &amp; Schumann</i>
<a href="http://www.staplefordgranary.org.uk">www.staplefordgranary.org.uk</a>		

**WANDLEBURY COUNTRY PARK**

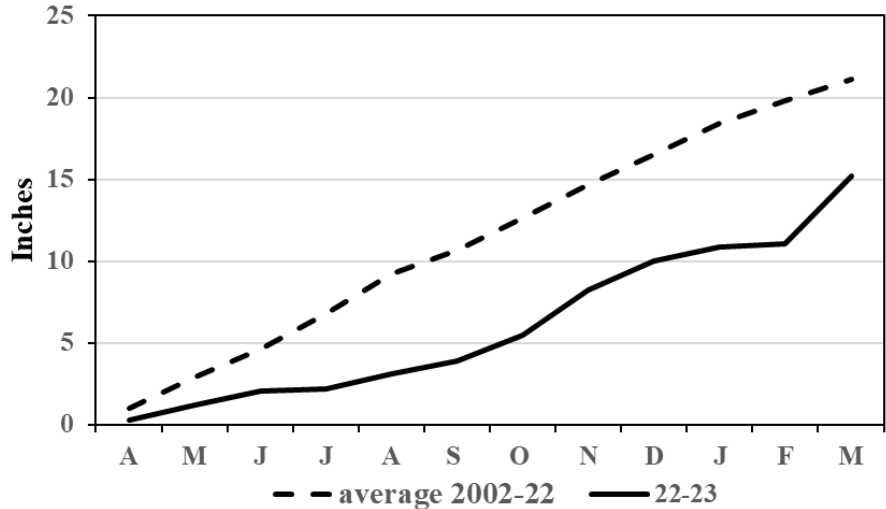
1	5 – 6am	May Day Morris Dance
9	4.30 – 6am	Guided dawn chorus walk
24	10.30am – 12.30pm	The House, the Horse and the Holes in the Ground – guided history walk
26	8.50 - 9.45pm	Guided bat walk (with bat detector)
30 May – 1 June	8.30am – 4pm	Holiday bushcraft for 5–12 year olds
<a href="https://www.cambridgeppf.org/pages/events/category/wandlebury-country-park-events">https://www.cambridgeppf.org/pages/events/category/wandlebury-country-park-events</a> Telephone: 01223 243830:		

### Great Shelford Village Rainfall 2023



*From data supplied by Angus Campbell*

### Great Shelford Village Cumulative rainfall



*From data supplied by Angus Campbell*

## LOCAL ORGANISATIONS

2G3S Green Group	Linda Whitebread	greengroupssss@gmail.com	843438
Badminton (Little Shelford)	James Newman	james@jamesnewman.org	843272
Bowls Club	Gill Taylor	gill.m.taylor@gmail.com	845904
Brownies, Guides, Rainbows	Lisa MacGregor	shelforddistrict@gmail.com	843021
Bunch – Feast	Duncan Grey	dsg@post.com	842191
Cactus and Succulent Society	J. Arbon	jacqui.arbon@icloud.com	07867653748
Carpet Bowls	Philip Seekings	phil.seekings@yahoo.co.uk	843416
Citizens Advice Bureau	Cambridge		0344 848 7979
Country Market	Dorothy Doel	dorothy@woodlandsroad.plus.com	843946
Cricket Club	Peter Ede	peter.ede@ntlworld.com	01223 510662
Football Club	Chris Gethins	Chris.Gethins@z-tech.co.uk	07980 383303
Free Church	The Administrator	administrator@shelfordfreechurch.org.uk	842181
Friends of Shelford Library	Daphne Sulston	dsulston@googlemail.com	842248
Granta Medical Practices		capccg.Covid19.gmp@nhs.net	0300 234 5555
Great Shelford Online	David Martin	www.greatshelfordonline davidm1961@gmail.com	845995
Memorial Hall Bookings	Jenny Eldridge	office@greatshelfordparishcouncil.gov.uk	01223 616622 Ext 302
Mobile Warden Scheme	Claire Smith (Warden)	saurus1960@gmail.com	07811 676991
	Jenny David (Chair)	jennykmf@yahoo.co.uk	845367
Parish Church Bell-ringers	Ann Seaman	juliet.a.seaman@outlook.com	504682
Parish Church Community Room	Mary Lester	lestermh_uk@yahoo.co.uk	842411
Parish Church Friends	Bob Doel	bobdoel@woodlandsroad.plus.com	843946
Parish Church Sunday Club	Gillian Pett	gillian.pett29@gmail.com	843278
Parish Churchwardens	Simon White	churchwarden@stmarygreatshelford.org	07984 451305
	Joanne Staines	churchwarden@stmarygreatshelford.org	07790 415732
Parochial Charities	Mary Lester (Clerk to the Trustees)	clerk@gspc.org.uk	842411
Police	Non-emergency number		101
Rainbow Pre-School	Allison Tomlin		07985 216603
Royal British Legion	Kevin Swann	sawstonpampisford.secretary@rbl.community	07496517859
Rugby Club	Secretary	secretary@shelfordrugby.co.uk	843357
Sawston Sports Centre	Sawston Village College	info@sawstonsports.com	712555
Beavers, Cubs and Scouts		contact@sandsscouts.org.uk	
Shelford & Stapleford Strikers	Douglas White	douglas.white2@ntlworld.com	561753
Shelford Primary School	Chris Grey (Headteacher)	office@shelford.cambs.sch.uk	843107
Shelford Spokes Cycling Club	Brian Connellan	shelfordspokes@gmail.com	07941 574663
Shelford Support Group (transport to hospital, etc.)	General enquiries: Gillian Northmore	shelfordsupport@googlemail.com	504542
	John Dibnah 842054	Marjorie Smith	564922
	Rosie Cranmer 513572		
Stapleford Choral Society	Adam Pounds	adampounds54@btinternet.com	07804 308042
Tennis Club	Sarah Richards	secretary@gstc.org.uk	
The Arts Society South Cambs	<i>To be announced</i>		
Twinning Association	Penny Pearl	penny.pearl@btinternet.com	842483
U3A (Sawston Branch)	John Gray	johngray6@gmail.com	01223 841784
WI	Vanda Butler (Secretary)	vanda.butler@googlemail.com	561053
Youth Initiative	Zac Britton	zac.britton@ssyi.club	07599 024210

**Great Shelford Mobile Warden Scheme**  
(Registered Charity 1055515)

We are a local charity that helps support the older residents of Great Shelford village to remain living independently in their own home. Through our phone calls and visits we aim to reduce social isolation and loneliness.

We can provide:

- Reassurance and security through daily phone calls and regular visits.
- Additional visits in the event of illness.
- Assistance with doctors' appointments and accessing local information.
- Help with paperwork and prescriptions, visiting the bank/post office, changing a light bulb and picking up shopping in the village.



For further information visit our website <http://www.shelfordwardenscheme.org>

Jenny David (Chair) 07764615524 [jennykmf@yahoo.co.uk](mailto:jennykmf@yahoo.co.uk)

Claire Smith (Warden) 07811676991 [saurus1960@gmail.com](mailto:saurus1960@gmail.com)



**Mrs Rosemary Rigge**  
Grad Dip Phys MCSP Reg. HCPC  
Chartered Physiotherapist

**TREATMENT ROOMS:**  
26 Mingle Lane, Stapleford,  
Cambridge CB22 5SY

or HOME VISITS

Tel: 01223 844091  
Mobile: 07958 708728  
Reg. BUPA, AXA, etc.

**DUXFORD BUILDING & LANDSCAPE SERVICES**

All work considered from:

- Hard Landscaping
- Brickwork
- Structural Alterations
- Carpentry
- All types of Building Works from Extensions to Conversions



**D A Rayment**

Home: 01223 837645

Mobile: 07958 774360

Email: [duxfordbuilding@btinternet.com](mailto:duxfordbuilding@btinternet.com)

Web: [www.duxfordbuildingandlandscapes.com](http://www.duxfordbuildingandlandscapes.com)



*Award winning free house & restaurant  
in the heart of the village.*

☎ 01223 503 402

@ [hello@threehorseshoes-pub.com](mailto:hello@threehorseshoes-pub.com)

🌐 [www.threehorseshoes-pub.com](http://www.threehorseshoes-pub.com)

**NB HORTICULTURE & CAMBRIDGE HEDGES**

All types of garden work  
& landscaping

Hedge & Shrub Supplier

[www.cambridgehedges.co.uk](http://www.cambridgehedges.co.uk)

Mr N Barber BSc RHS Cert

Consultant Member of the Gardeners Guild

109 Cambridge Road  
Great Shelford, CB22 5JJ

**07789 564042**

**01223 977306**