

# Great Shelford VILLAGE NEWS

EST 1999

AUGUST 2022

PRICE: 40p

## *Triumphant Return of the Feast*



Brass Band at the Feast

Photo: Duncan Grey

## *Parochial Charities News* *What is Arthur's Shed?*

<b>CONTENTS</b>			
Parish Council Minutes	1	2G3S	27
Planning Applications & Decisions	3	Cross-Channel Swim	29
Community Centre Association	4	Cambridge Flower Club	30
September Issue of the <i>Village News</i>	4	Old News	30
Parish Council News	6	Shelford Support Group Appeal	32
Anthony Browne	7	Parochial Charities	33
Bus Service Changes	7	Better Ways Than Busways	36
Return of the Shelford Feast	8	Library Update	40
Thanks to Feast Volunteers	11	Neighbourhood Plan	42
Granta Medical Practices	12	Cricket Cub	43
Parish Church	14	Football Club	46
Cambridge Aid	15	What is Arthur's Shed?	47
Free Church	17	Tennis Club	49
Little Shelford Quiz Evening	18	Sawston Fun Run Success	49
School News	20	What's On	51
Country Market	23	How to Contact the <i>Village News</i>	51
WI	25	Rainfall	52
Rainbows, Brownies and Guides	25	Local Organisations	
Diary, Bins, Post Boxes, Library	26	Shelford Fun Run	

GREAT SHELFORD PARISH COUNCIL			
CHAIR	Malcolm Watson	DEPUTY CHAIRS	Gregory Price, John Stanton
CHAIRS OF SUB-COMMITTEES			
Planning	Barbara Kettel	Highways	Barrie Ashurst
Pavilion & Recreation	Malcolm Watson	Cemetery & Allotments	Gregory Price
MEMBERS			
Paula Arnold	Peter Brown	Roberto Ghersemi	Ifthinan Shareef
Pete Basset	Lyn Disley	Angela Niblett	Ben Shelton
CLERK	Libby White	clerk@greatshelfordparishcouncil.gov.uk 01223 616622	
To email Parish Councillors, use:		firstname.surname@greatshelfordparishcouncil.gov.uk	
DISTRICT COUNCILLORS	Peter Fane	07802 256861	William Jackson-Wood 07873 731597
COUNTY COUNCILLORS	Brian Milnes	07971 886113	Maria King 07764 609061

## **GREAT SHELFORD PARISH COUNCIL**

*greatshelfordparishcouncil.gov.uk*

### **SUMMARY FROM THE UNADOPTED MINUTES OF THE COUNCIL MEETING ON 15 JUNE 2022**

#### **PRESENTATION**

Mike Farrington attended the meeting to present a new initiative, *Concrete Rose*, which has been set up to help young adults of 16–21 years old. The organisation is a Community Interest Company (not for profit) which provides accommodation with hosts for young people and is looking for support. Councillors made some suggestions about how the Parish Council could help by providing contacts.

#### **REPORTS FROM COUNTY AND DISTRICT COUNCIL MEMBERS**

Regarding the resurfacing of Hinton Way, Councillors felt that other roads in Great Shelford had been more in need of resurfacing. Concern was also raised that the new surface is not suitable for cyclists.

Cllr Milnes was asked what his role is with the Greater Cambridge Partnership (GCP). He confirmed that in his role as District Cllr, he is a substitute member to attend when the Leader of the District Council is unable to attend. There followed a lengthy discussion about the GCP, Cambridge South East Transport (CSET) busway and what is felt to be a lack of governance and transparency from the GCP. Members are concerned that the views of the parish are not being heard and shared with the GCP. Cllrs King and Milnes noted that they were in attendance in their roles as County Councillors and will raise concerns about lack of transparency, miscommunication, etc and feed back to the Clerk what they are going to do.

#### **REPORTS FROM COMMITTEES AND WORKING GROUPS**

The Highways Committee was unable to meet at the end of May as it was not quorate. Cllr Ashurst noted that he had attended an online meeting with the Police and Crime Commissioner and they are looking for possible areas for community service.

#### **COUNCIL ADMINISTRATION**

Correspondence had been received from Cambridge Water following the request for data as agreed at the Emergency Meeting on 9 May but it was felt that the information requested had not been provided. It was decided to write to Cambridge Water and ask for the information requested and to note that

should it not be received this would be reported to the Information Commissioners Office.

It was agreed to have a Parish Council stall at the Feast Day in July with information on the cemetery and allotments, the recreation ground, the emergency plan, community resilience, climate emergency and external influences (traffic and transport).

Progress has been made on items on the Business Plan, including the application for the Local Council Award Scheme, quotations for paving, the wildlife planting enhancements and ongoing discussions with Wheelscape and interested parties.

## **PLANNING**

A public consultation is currently in progress for the retirement village proposed for Stapleford (off Haverhill Road and Hinton Way). It was agreed to ask for clarification on the use of facilities within the village by the public and to ask what their definition is of a 'country park'.

## **RECREATION AND PAVILION**

Members of the Playscape Working Group have been meeting with representatives of the Scout and Girl Guiding groups, who feel they have had to compromise with respect to ongoing developments on the Recreation Ground. As the Recreation Ground is in a Conservation Area and planning permission has already been given, the Wheelscape can only go behind the Scout Hut. It was noted that the Parish Council can help the Scout and Girl Guiding groups by providing access to the Pavilion toilets if needed, or by roping off a specific area of the Rec for their exclusive use.

It was agreed to appoint Brookfield Groundcare to lay slabs around two sides of the Pavilion at a cost of £17,358 + VAT. The paving will extend down the length of the Pavilion facing the Recreation Ground to provide a more suitable surface for spectators to watch sport, and also in front of the Pavilion to provide better access to the Bowls Club and the area where the cricket nets are to be stored.

Even though the weather was disappointing, the Picnic in the Park for the Platinum Jubilee was well attended, with hardy residents picnicking in the drizzle. Tea, coffee and cake were provided in the Pavilion. £339.12 was raised, which will be split evenly between SSYI and OASISS.

## **FINANCE**

A grant of £300 will be provided for Shelford Library for their summer reading challenge.

A grant of £3,500 will be provided for the Mobile Warden Scheme on receipt of copies of their Safeguarding documents.

Full copies of the minutes of the Parish Council and Planning meetings can be viewed on the Parish Council website [greatshelfordparishcouncil.gov.uk/minutes](http://greatshelfordparishcouncil.gov.uk/minutes)

### PARISH COUNCIL & COMMITTEE MEETINGS IN AUGUST

Planning Committee	1 August	7.30pm	Pavilion
Planning Committee	15 August	7.30pm	Pavilion
Highways Committee	15 August	after planning	Pavilion
Finance & General Purposes	17 August	7.00pm	Pavilion

Meetings may be adjourned for up to 10 minutes when the public can ask questions and put forward points of view related to business on the agenda or for items they wish to raise for future agendas. No decisions can be made in this section of the meeting.

## PLANNING APPLICATIONS PARISH COUNCIL COMMENTS

22/02075/HFUL	200 Cambridge Road	New annex (with demolition of existing barn and outbuildings).
---------------	--------------------	----------------------------------------------------------------

Application supported but an Ecology Survey should be undertaken.

22/02114/HFUL	12 Coppice Avenue	Ground and first floor extension to the front and single storey flat roofed extension to the rear.
---------------	-------------------	----------------------------------------------------------------------------------------------------

Application supported.

22/02167/FUL resubmission of 21/05193/FUL	Land at 109 and rear of 111 Cambridge Road	Erection of three storey dwellings with revised highway access and associated infrastructure works.
-------------------------------------------------	--------------------------------------------	-----------------------------------------------------------------------------------------------------

Application supported.

22/02143/FUL	Shelford Rugby Club The Davey Field Cambridge Road	Installation of a shipping container to be used as a Pizza Kitchen.
--------------	----------------------------------------------------------	---------------------------------------------------------------------

Application supported.

22/02414/FUL	44 Orchard Road	Erection of new dwelling and associated highway access.
Application supported.		

22/02489/HFUL	4 Marfleet Close	Single storey rear and side extensions, plus garage conversion to create additional bedroom. New UPVC windows.
Application supported.		

## PLANNING DECISIONS BY DISTRICT COUNCIL

### Approved

21/01612/HFUL 60 Cambridge Road

22/01528/HFUL 57 Macaulay Avenue

### GREAT SHELFORD COMMUNITY CENTRE ASSOCIATION

Notice is given that the Community Association has resolved to pass responsibility for the management of Great Shelford Memorial Hall to Great Shelford Parish Council (GSPC) and transfer the Community Association's assets to GSPC on a ring fenced basis. It is intended that the Community Association will be dissolved on 1 September 2022. Any enquiries should be addressed to the Treasurer at 26 De Freville Rd, Great Shelford CB22 5 LH.

**Charity No. 300391**

### SEPTEMBER ISSUE OF THE *VILLAGE NEWS*

The deadline for copy for the next issue of the *Great Shelford Village News* is Friday 12 August and it should be available on Friday 26 August, with subscribed copies delivered shortly thereafter.

# JO ALEXANDER

Reclaimed Teak, Concrete &  
All Weather Wicker furniture for your garden

01954 267857  
[www.joalexander.co.uk](http://www.joalexander.co.uk)



## Chiropodist

**David Levy**  
MSSCh MBChA

Home visiting practice

Saturday morning clinic  
held at

Billson Opticians,  
Sawston

Mobile: 07966 136972  
Home: 01223 834634

**green|weigh**  
minimal wasteshop

*Eco-friendly, ethically  
sourced food refills &  
other products*

**60 High Street  
Sawston CB22 3BG**

Email:  
[hello@greenweighshop.co.uk](mailto:hello@greenweighshop.co.uk)

Facebook/Instagram:  
[@greenweighshop](https://www.facebook.com/greenweighshop)

Website:  
[www.greenweighshop.co.uk](http://www.greenweighshop.co.uk)

Tues-Fri: 9am to 5pm  
Sat: 9am to 4pm

**sawstoncarpet  
andflooringltd**

Carpets - Sisal - Vinyl  
Wood - Laminate  
Karndean - Amtico - Moduleo

**Mon-Fri: 9am-5pm  
Sat: 9am-4pm**

Unit 34, Eastern Counties Leather Site,  
London Road, Pampisford CB22 3EE  
Tel 01223 837005

[sawstoncarpetsandflooring@gmail.com](mailto:sawstoncarpetsandflooring@gmail.com)  
[www.sawstoncarpetsandflooring.com](http://www.sawstoncarpetsandflooring.com)

## NICHOLAS CLIFFE & CO CHARTERED ACCOUNTANTS

*Business Advisers for South Cambridgeshire*

Accounts, Audit, VAT & Tax Advice

**WE WANT TO HELP YOUR BUSINESS GROW**

**Realistic Fees**

**We offer a free initial meeting and business 'health check'.**

Mill House, Mill Court, Great Shelford  
Tel: 01223 471576

[www.nicholas-cliffe.co.uk](http://www.nicholas-cliffe.co.uk)

## PARISH COUNCIL NEWS

As I write this we are about to have a record breaking heatwave and I hope our residents manage to stay safe and cool.

Here is this month's update on what we have been involved in since our last piece.

### **Feast – Comments from Residents**

It was great to see so many residents at this year's Feast Day. Many of you visited our stall, perhaps coaxed a little by Cllr Pete Bassett and it was good to catch up with you and to tell you of our plans, update you on what we have been doing and to hear of your thoughts on what we should focus on for the benefit of the village.

Although we are unable to help with some comments such as more sunny days and more ducks on the river, there were many comments we can look at or ensure that we bring matters to the attention of the organisation responsible for that particular issue, such as the Highways Department for potholes, state of pavements, etc. The comments you provided were considered at our meeting on 20 July and we will ensure that we continue to pay attention to these issues.

### **Memorial Hall**

You may have seen the notice in last month's *Village News* that the Community Association will cease to be on 31 August 2022. From 1 September, Great Shelford Parish Council will be managing the facility in line with the other facilities it owns. If you wish to book any of our facilities, please contact Jenny on [office@greatshelfordparishcouncil.gov.uk](mailto:office@greatshelfordparishcouncil.gov.uk).

May I take this opportunity to extend our thanks to the Community Association team of Simon Sparrow, Dorothy Doel, Charlie Nightingale, Wendy Seekings and Sheila Tilbury-Davis for all their hard work and dedication over the last 20+ years.

### **'Shopping' Bus - Update**

Last month I mentioned that with dwindling numbers the shoppers' bus was fast becoming unviable for us to sustain. We have received a few calls in the last few weeks and we will be trialling running the bus on a Monday morning for the month of August.

First collection is 9.30am at Chaston Road. The bus then travels via Orchard Road, turning left on to Macaulay Avenue (travelling all the way around the Square), back on to Orchard Road, turns right on to Hinton Way, through Station Road to Woollards Lane (drop off outside Tesco). The return is 12.30pm from the Free Church.



Please do look out for the CL Travel bus and catch a lift by waving it down on its route. The service is free of charge and can take a maximum of 16 passengers.

Don't forget to get in touch with us should you have any relevant concerns. Our telephone number is 01223 61 66 22 and Libby will be available to help during office hours (please leave a message outside of these times, or email). Councillors have emails too, which can be found on the website. If you do email a Councillor we ask that you copy in Libby.

*Malcolm Watson, Chairman*

## **ANTHONY BROWNE**

As I write we are coming off the back of one of the most tumultuous political fortnights in recent years. I am sure many of you will be aware that I submitted two letters of no confidence in the Prime Minister first in June and then in July. This was not an easy decision to make. In truth, however, the national Government had become a distraction to the substantive issues of the day. For the people of South Cambridgeshire we need a period of stability to deliver what is really needed.

There are a number of pressing issues that need urgent attention. Rest assured, when the new Government is in place I will be redoubling my efforts to deliver the high cost of living supplement for NHS workers in Cambridgeshire, the Children's hospital and the Cancer hospital. I have received many emails in recent times, some truly harrowing, about ambulance waiting times in our area. One of the key causes of this issue is the difficulty of recruitment and retention for the local NHS. Whoever the next Health Secretary is, I can promise he or she will have barely unpacked before I am knocking on the office door!

As ever, I would encourage anyone who may need my assistance to get in touch. I appreciate that many are still struggling with Homes for Ukraine and passport applications. My office is working hard and getting results on these issues so please do not hesitate to reach out.

## **BUS SERVICE CHANGES**



Due to staff shortages caused by retirement and long term illness, Service 7a will now only operate between Whittlesford, IWM, Heathfield, Hinxton, Sawston and Whittlesford and there will be minor retimings to the 31 service. However, A2B now have a new Mercedes minibus operating on the 31 service.

*John Wakefield*

## RETURN OF THE SHELFORD FEAST

The first Feast for three years was a bold statement following several postponements. There was more activity than ever before in a huge new marquee with superb sound and lighting – a contrast with our first efforts in 1994 when an army bell tent with lots of holes was the only shelter available!

The order of events was changed so Feast Day came early on – when Bunch energies were still at full throttle – preceded by a very popular beer festival and evening gig from local ska band Big 10. Monday and Tuesday were new departures from our usual format. A small but very enthusiastic audience of mostly younger people entertained us for karaoke night on Monday, arranged



by Matt Bartle, followed the next evening by ex-Strictly Come Dancing professionals, Ian Waite and Vincent Simone bringing part of their touring show to the specially enlarged stage (see photo, left, of Vincent Simone and Despina Violari). Hilarious comedy from Arthur Smith, Friz Frizzle, Zoe Lyons and Ben van der Velde, the massively popular Quiz (an amazing 58 teams!) and a church concert of skilful guitar playing by Daniela Rossi and Sebastian Pompilio filled Wednesday, Thursday and Friday. The week culminated in two music nights featuring Tony Hadley and Trevor Nelson which attracted audiences of 850 and 1200 respectively.

Local support and that from further afield was terrific and The Bunch can safely say that this was one of the best ever Feasts, certainly the longest and most action packed, entertaining for all, which is one of our two main objectives.

And now we look forward to receiving grant applications from local good causes. We won't know how much money we have raised until late October but we have a deadline of 30 September by which time all applications must be received. The application form is at <https://www.shelfordfeast.co.uk/about.html> Scroll down to the last paragraph and choose either a Word or pdf version. Read the criteria carefully before submitting the form!

There are memorable photographs on the facing pages (thanks to Sarah Coppendale, Billlawton photography, Peter Wilkinson and Duncan Grey) and for more of these visit our gallery at <https://www.shelfordfeast.co.uk/gallery.html> Next Feast is 2 July 2023. See you at The Shelford Feast!

*Duncan Grey, Secretary*



## Rebecca Orde

Want to make changes to your home but don't know where to start?

We project manage property renovations & refurbishments. We can also help you with an "eco makeover" or future-proofing your home.

- ✓ Single point of contact
- ✓ Tried & tested trades & professionals
- ✓ End-to-end service
- ✓ Taking away the stress

Call us for a helpful chat:  
**01223 782125**

Or visit our website at:  
[www.rebeccaorde.com](http://www.rebeccaorde.com)

Email:  
[info@rebeccaorde.com](mailto:info@rebeccaorde.com)

## Shelford Physiotherapy

Are you in pain?

**Call 01223 844 488**

**Stephanie Hatter BSc (Hons)**

A Chartered Physiotherapist  
registered with the HCPC.  
Recognised provider for  
BUPA, AXA PPP, Aviva, etc.



*Great  
Value*

**KASH STORES**

*Local  
Services*

**A great deal more from your local store!**

General Groceries • Fresh Produce • Confectionery  
Instore Bakery • Off Licence • Photocopying  
Newspapers • Magazines • Stationery • Lottery  
Dry Cleaning • Shoe Repairs • Passport Photos

**Full Post Office counter facilities**

33-35 Hinton Way, Great Shelford

Tel: 01223 843307

Shop opening times:

Mon-Sat:

7.00am-7.30pm

Sunday:

7.00am-2.00pm

**POST  
OFFICE**

Post Office opening:

Mon-Fri:

8.30am-6.00pm

Sat:

8.30am-2.00pm

## TAYABALI & WHITE

ACCOUNTANCY | TAX | CONSULTING

5 High Green, Great Shelford, Cambridge CB22 5EG

Telephone: **01223 843324**

Email: [enquiries@tayabali-white.co.uk](mailto:enquiries@tayabali-white.co.uk)

## Crafty Sue

Handmade  
Cushions and  
Gifts  
Haberdashery  
Patchwork  
and Craft  
Supplies



Unit 34, Eastern Counties  
Leather Site, London  
Road, Pampisford,  
Cambridge CB22 5EE



07976 745839

[craftysuesue@hotmail.com](mailto:craftysuesue@hotmail.com)

## HEARTFELT THANKS TO ALL OUR VOLUNTEERS THIS YEAR AT SHELFORD FEAST



We rose this year, post Covid lockdowns, like a phoenix from the ashes and put on a week-long festival of events of all sorts, most of which included the provision of food and drink. We are a limited Bunch of people, in fact made smaller this year by the loss of some of our valued colleagues – Alan Lyne, master of food hygiene and fringe events like the church concert and Will George, so sorely missed, who dealt with sponsorship, advertising and marketing. We tried to cover their areas of expertise as best we could and we managed it. Justin, Bunch Chairman, said, ‘We were a like a swan, gliding along the water peacefully to those watching, but paddling furiously below the surface to keep afloat!’

Anyway, we couldn’t have done it without **YOU!** All those loyal volunteers who provide bar staff and food tent service every night and on Feast day; the team of wonderful salad choppers who come and prepare mountains of salad on Feast morning; the scout runners, scorers, markers and question master who made the BIG quiz such a success; teams of volunteers from village charities,



WI members Anne Ashurst and Rosie Cranmer ready to provide tea at the Feast  
Photo: Anna Sugden

organisations and societies who provide a wonderful array of stalls on Feast Day, as well as the choirs and clubs who entertained us in the arena and on the stage; those associated with St Mary's Church who helped host a classical concert in their beautiful church; the first aid volunteers who are on hand in case of accident and all those who helped set up for Feast Week and clear up after it. Incidentally, our volunteers all say how much they enjoy helping out as part of a great team.

It is over now – for another year, but in the meantime if you have enjoyed Feast Week please consider volunteering for next year. Even going on a rota on Feast Day for an hour or so will help. You can do as little or as much as you like. Email [support@shelfordfeast.co.uk](mailto:support@shelfordfeast.co.uk) and give us your contact details so we can get in touch next year.

*Sarah Coppendale*

## **GRANTA** Medical Practices

### **FLU AND COVID VACCINES**

I can't believe it's that time already, but we are now finalising the 2022 flu clinics! Additionally, we are planning the Covid autumn vaccination campaign. There are still unanswered questions, such as:

- Who will be eligible for the flu vaccine this year?
- When will the Covid vaccines be delivered to us?
- Will we be able to vaccinate patients with the flu vaccine at the same time as the Covid vaccine?
- Will we be able to hold Covid vaccine clinics at each Granta site, as opposed to Sawston only?

As soon as our questions are answered by NHS England and our local Integrated Care System (formerly the Clinical Commissioning Group) we will let you know and will publicise the vaccine clinic dates and contact our patients directly to arrange appointments. In the meantime, if you have any queries please do not hesitate to contact me directly on [sandra.east@nhs.net](mailto:sandra.east@nhs.net) or 0300 234 5555, option 2.

Have you considered downloading the new patient app, **Airmid**? With this app you have online access to your medical records and you can order repeat medications. You can also integrate the app with your wearable health trackers. The app is available from Google and the App Store.

*Sandra East*



At the Clay Farm Centre, Cambridge

**Elite Tuition Cambridge**  
English & Maths  
Primary & Secondary  
SATs | 11plus | GCSE

Looking for that something extra for your child's education? Look no further. With our engaging, hands-on and interactive tuition, there's guaranteed progression for children at every age.

Scan here to register your interest!

First class £19.99

Contact us on  
info@elitetuition.uk  
07712 467 322  
elitetuition.uk

## SOLUTIONS

**Ladies' and Gents'  
Hair Salon**

*Air-conditioned*  
**44 Woollards Lane  
Great Shelford  
CB22 5LZ**

Closed all day Wednesday  
& Sunday

 **01223 843844**



**Mrs Rosemary Rigge**  
Grad Dip Phys MCSP Reg. HCPC  
Chartered Physiotherapist

**TREATMENT ROOMS:**  
26 Mingle Lane, Stapleford,  
Cambridge CB22 5SY

or HOME VISITS

Tel: 01223 844091  
Mobile: 07958 708728  
Reg. BUPA, AXA, etc.

## DUXFORD BUILDING & LANDSCAPE SERVICES

All work considered from:

- Hard Landscaping
- Brickwork
- Structural Alterations
- Carpentry
- All types of Building Works from Extensions to Conversions



**D A Rayment**

Home: 01223 837645


Mobile: 07958 774360

Email: [duxfordbuilding@btinternet.com](mailto:duxfordbuilding@btinternet.com)


Web: [www.duxfordbuildingandlandscapes.com](http://www.duxfordbuildingandlandscapes.com)



*Award winning free house & restaurant  
in the heart of the village.*

 01223 503 402

@ hello@threehorseshoes-pub.com

 [www.threehorseshoes-pub.com](http://www.threehorseshoes-pub.com)

## NB HORTICULTURE & CAMBRIDGE HEDGES

All types of garden work  
& landscaping

Hedge & Shrub Supplier

[www.cambridgehedges.co.uk](http://www.cambridgehedges.co.uk)

Mr N Barber BSc RHS Cert

Consultant Member of the Gardeners Guild

109 Cambridge Road  
Great Shelford, CB22 5JJ

**07789 564042**

**01223 977306**



## GREAT SHELFORD PARISH CHURCH

[www.stmarysgreatshelford.org](http://www.stmarysgreatshelford.org)

We invite you to visit your historic parish church and enjoy the sacred space.



### News from St Mary's Church

Our Associate Priest, Julie Norris, is on her well-earned summer holiday. Her contribution to the parish during the interregnum has been enormous and we wish her a relaxing and restorative break.

A couple of Sundays ago our licensed lay minister, Maureen Dobson, preached very thoughtfully and with fresh insight on the well known parable of the good Samaritan and the question of who is our neighbour. In the tale of the heroic Samaritan it was a stranger who had been left for dead and for whom he was prepared to risk his own life to restore him to health. That is quite an extreme example, of course and for the rest of us there are many smaller and more manageable ways in which one can 'love thy neighbour'. In recent weeks many Shelford people have welcomed Ukrainians as their neighbours, giving them refuge in their own homes. We are delighted that throughout August the Community Room in the churchyard will become a classroom where Ukrainian visitors will receive English language tuition to help them integrate better in their new environment.

All churches in the Granta Deanery are being asked to consider their role in their communities as part of the new Deanery Development plan. After the 10am communion service on Sunday 14 August, Julie Norris will lead a discussion about how St Mary's can shape its future in Shelford as a healthy church that serves its community. Everyone is welcome to attend – the more views the better!

*The Churchwardens*

**Food Box:** We continue to supply a small number of tins, dried produce and other staples such as boxed milk in the Friendship Box in the porch of St Mary's Church. The tins of meat, microwave rice and milk go quickly from the box. Please can you consider putting in a tin. This is a friendship box. Those who give and those who receive wish each other well. We all benefit from this friendship.

### Pilgrim Group

The Pilgrim study group usually meets on Monday mornings at 10am in church. Our group looks at well known passages from the Bible and



encourages us to reflect on them with commentaries from leading theologians, and those versed in poetry, art and music. The group has broken up for the summer and will meet again in September. All are welcome – no need to have attended previously as each meeting is self-contained.

**For more information about Great Shelford Parish Church**

visit our website: [www.stmarysgreatshelford.org](http://www.stmarysgreatshelford.org)

Associate Priest: Revd Dr Julie Norris  
01223 871807 or email: [Revjulienorris@gmail.com](mailto:Revjulienorris@gmail.com)

Parish Administrator: Katharin Page 07710 518220  
or email [pagekatharin@gmail.com](mailto:pagekatharin@gmail.com)

St Mary's Great Shelford is a Registered Charity, No. 245456



Our grants support families and individuals who are experiencing homelessness, domestic abuse and mental and physical illness. Around half our aid benefits children and many

recipients are single parents. In 2021 almost 1,000 people/families were helped – a 52% increase compared to 2020.

Cambridge Aid grants of approximately £150 to cover food, clothing (including school uniforms), essential white goods and furniture etc. We receive applications from local agencies such as Citizens Advice, Wintercomfort, the Women's Resources Centre and Family Centres and we work closely with them to ensure grants are spent appropriately through other charities such as Emmaus and Camb Reuse. All our Trustees are volunteers, so virtually every penny that we raise goes directly to those who need it.

This year's cost of living surge is tipping people into real poverty, creating a bigger challenge. Cambridge Aid is struggling to keep up with the demand, as so many people need us this year – can you help us to continue to be there for them please?

**Please donate, using GSVN reference, where possible:**

on the Cambridge Aid website: <https://cambridgeaid.org/donate-2/>

Or on <https://www.justgiving.com/fundraising/cambridge-aid>

Or by BACS/standing order, email: [secretary@cambridgeaid.org](mailto:secretary@cambridgeaid.org)

Or by sending a cheque to the Treasurer, Cambridge Aid, 66 Devonshire Road, CB1 2BL.



All aspects of  
Tree surgery &  
Woodland management  
**Free estimates**

- Crown thinning and lifting
- Sectional dismantles
- Crown reductions
- Dead wooding
- Hedge trimming
- Land & garden clearance
- Stump grinding
- Felling

**Fully Qualified  
& Insured**

**07743 406 569 | 01763 208 361** City & Guilds NPTC  
**www.shelfordtreeservice.co.uk**

## **Rothwell's Carpet Cleaning**

**Carpet Cleaning &  
Stone Floor, Upholstery, Rugs**

*A few points that make us stand out:*

Rothwell's has been in business since 1993.

We're an honest local family firm.

Our large truck-mounted machines mean more cleaning & drying power for the best results possible.

Members of both the NCCA and TACCA.

We will move the furniture.  
100% satisfaction or it's FREE.

Call Oliver and Max Campbell  
for expert help today.

**01223 832 928**

**www.Rothwells.biz**

Introducing...

# ACElectrics

**Your Local Electrician**

- Lighting and Power
- Electric Vehicle Chargers
- New Consumer Units
- Testing and Inspection
- Minor Works
- Fault Finding
- Outdoor Lighting
- Extensions

A friendly, tidy and reliable electrician ready to serve the people of Great Shelford. Feel free to get in touch with any of your electrical requirements.

**CALL ADAM  
01223 89 48 48**

Email:  
**adam@acelectrics.live**

Web:  
**acelectrics.live**



# Great Shelford Parochial Charities

Supporting people in our village

## **Grants**

We welcome applications for small grants to support local people and good causes

## **Housing**

We provide 32 almshouse homes for Great Shelford people and are building 21 more

## **Allotments**

Available to rent for a nominal annual fee - or just come and enjoy our community garden

## **Donations**

Are most welcome via our website

Subscribe to our newsletter / mailing list

[www.gspc.org.uk](http://www.gspc.org.uk) [enquiries@gspc.org.uk](mailto:enquiries@gspc.org.uk) 01223 842411



[fb.com/greatshelfordvillagecharities/](https://fb.com/greatshelfordvillagecharities/)



### **I wonder if you are a good team player?**

As the Commonwealth Games take place in July and August, we see athletes from around the world converging on Birmingham to compete in various sports.

Each country represented will have a team of their top athletes competing in individual events and in both large and small team events, but each of these athletes will be hoping to win medals for their country as part of a much larger team, and wider still, each country represented is part of a much larger team: Team Commonwealth.

### **What makes a good sports team?**

The best sports teams are made up of players who work together, recognising that being part of a team is about 'we' more than 'me'. A good team is one which recognises the skills and abilities of each of its members, celebrates individual achievements, utilising them for the benefit of the team as a whole, yet supports and encourages those who might be struggling. Unselfish players who support each other generally perform better than a group of individuals who don't work together well as a team.

I think that being in a community together is like being in a team too, with each person being loved, cared for, encouraged, supported and celebrated. In the Great Shelford community we saw an example of teamwork in the running of the Feast which took place last month, where people from the community came together and worked for the good of the community as a whole and that is something worth celebrating, as well as being something we should aspire to see happen in other ways.

Perhaps as we think about working together as a team we might consider how we can celebrate the achievements of one another in our community. How might we support those that need more support? And in what ways can we work together for the good of the community as a whole?

### **How might each one of us be a good team player in the communities we are part of?**

As we celebrate our community, let's remember that the origin of community is in God himself. He is community: Father, Son and Holy Spirit; Three-in-one; a loving, inclusive, relationship that gives us a perfect example of teamwork.

I pray that he will be our example to follow wherever we find ourselves in a community: in families, in workplaces, in schools, in social clubs, in churches, and in our village. May our Trinitarian God bless you over this summer time, wherever you are and wherever you go, and may he encourage you to find your place in the team that is Shelford.

*Diana Parr*  
*Elder and Ministerial Assistant*

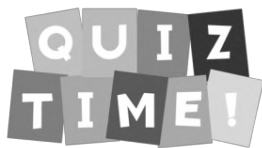
## FREE CHURCH ACTIVITIES DURING AUGUST

**Sunday Services** – every Sunday morning at 10.30 am. More information can be found on our website [www.shelfordfreechurch.org.uk](http://www.shelfordfreechurch.org.uk) or on our Facebook page.

**Picnic in the Park** – every Wednesday morning 10–12 on Great Shelford Recreation Ground. Come along and join us for some informal activities for small children. Bring a rug and a picnic if you wish. An opportunity for families to stay in touch over the summer while other groups are closed.

**Date for your Diary** – Saturday 10 September *Eco Fest* and *Repair Café* will be taking place on the church premises from 10am–2pm. Keep your eyes open for more information to follow.

## LITTLE SHELFORD MEMORIAL HALL QUIZ EVENING



This will take place on Saturday 24 September for teams of up to eight people in Little Shelford Memorial Hall. A fish/chicken and chips supper (or vegetarian alternative) will be served and there will be a licensed bar. The quiz will start promptly at 7.30pm (doors open at 7pm) and costs £12.50/head to

include supper.

To register a team, please contact Sarah Coppendale ([coppendales@btinternet.com](mailto:coppendales@btinternet.com)) or ring 842498 for an entry form. Entries accepted on a first come, first served basis as tables are limited, and need to be received by Monday 19 September so that the food order can be finalised. Thank you! All proceeds go to the upkeep of the Memorial Hall.

*Sarah Coppendale*



Thinking of selling or  
letting your property?

Our Great Shelford  
team can help!

2019 ★★★★★ **feefo<sup>co</sup>**  
**Gold Trusted Service Award**

Call: 01223 800860  
or Email: [shelford@rah.co.uk](mailto:shelford@rah.co.uk)

## LAY ELECTRICAL Sales and Repairs

*Washing  
Machines,  
Vacuum  
Cleaners,  
TV, Video,  
etc.*



66 High Street  
Great Shelford  
01223 842488



## TIM PHILLIPS & Co Ltd Accountants

Independent, specialist service for:

**Small Business**

**Self Assessment**

**Personal Taxation**

FREE initial consultation – NO OBLIGATION

**Easy to find us – map on website. FREE PARKING**

**Copley Hill Business Park**

*Off A1307 between Wandlebury and Babraham*

**01223 830044**

[info@TPaccounts.co.uk](mailto:info@TPaccounts.co.uk) [TPaccounts.co.uk](http://TPaccounts.co.uk)

## SHELFORD SCHOOL

Our last few weeks of term were filled with exciting activities, including:

- making history with the first KAPLA Bricks 'Big Build' in a UK school! The children unloaded bags full of similar sized wooden bricks and used them to construct a highly impressive 3D world (see photo below). Drawing on patience, coordination skills, repeating patterns and great teamwork, it was a fantastic STEM activity for all ages



- developing scooter skills with the Scootability team (Year 2)
- honing performance skills through Dance Workshops (Years 2 and 6)
- the return of swimming lessons in our lovely outdoor pool (all years)
- trips to the Sedgwick and Zoology Museums (Year 1) and Hunstanton (Year 2)
- 'journeying' to Morocco for International Day
- puzzling away in Maths Days
- the anticipation of Mr Grey announcing our new Head Girl and Head Boy following the Year 5 interviews
- Sports Day. We were delighted to invite family and friends to share Sports Day again. We also welcomed Sports Leaders from Sawston Village College who helped run the events, including some of our former pupils. The weather was kind for most of the afternoon, except for a sudden downpour that soaked our speedy runners just as the Dashes got underway.

They coped admirably, boosted by cheers of support from their Houses that could be heard across the village! Well done to all the competitors and congratulations to 2022's joint winning Houses, the Stags and Swans

- celebrating our Leavers with a host of activities, including the traditional Maypole dance (see photo below), Leaver's service, French Breakfast and legendary End of Year Production. Year 6 thoroughly entertained the school with their performance of Peter Pan, complete with music, mermaids, magic and mischief and a super set. Congratulations and thank you to the Year 6 pupils and staff for their great efforts staging this show and for showcasing some of the best bits at the Shelford Feast. We will all miss you, Year 6, but are excited for your new adventures as you move schools.



Enrichment activities such as these are only possible thanks to our dedicated staff and volunteers plus the support of our village communities – thank you all so much. Our PTA team have, yet again, helped us to raise precious funds. The latest bike sale topped £1000 and we await totals from the mini Summer Fair and Camp Out.

Special thanks to PTA Executives, Ilse Paterson (Treasurer) and Rachel Bousfield (Secretary), who both stayed an extra year in post and our trio of Chairs, Ellie Rugg-Gunn, Suzanne Dootson and Anna Sidders – one for each term. Our 2022–23 calendar is looking great and there will be lots to share next year. In the meantime, we wish you a very happy summer break.

*Maria Lazarus, Parent Governor*



**DAY**CHARTERED  
CERTIFIED  
ACCOUNTANTS

Do you want more control over your business accounts, or want to organise your personal tax situation more effectively?

We are a friendly team of qualified accountants who can help you reach the potential of your business and give you expert professional accounting and tax advice using the latest technology to work for you in achieving your goals.

We can deal with all matters relating to business tax and accounting including online bookkeeping, VAT and PAYE matters.

Private clients can be confident that we will deal efficiently with tax return preparation and all aspects of tax planning.

To arrange an informal chat or a meeting please contact us at:

Quern House, Mill Court, Great Shelford,  
Cambridge, CB22 5LD

T: 01223 506533

E: [hello@day-accountants.com](mailto:hello@day-accountants.com)

W: [www.day-accountants.com](http://www.day-accountants.com)



QUALITY FLOORING SUPPLY,  
INSTALLATION & AFTERCARE

## Specialists in Wood Flooring, Carpets & Vinyl Flooring Solutions

*"We've had a vinyl floor fitted in a loft bedroom. Sam and Nigel were excellent throughout. The whole experience was made very stress free due to their professionalism and the floor looks amazing. I would not hesitate to recommend The Art of Flooring."*

**Juliet Mills, Cambridge**

**01223 755 802**

Please quote Great Shelford Mag

Best of  
**houzz**  
2020  
SERVICE

Best of  
**houzz**  
2020  
DESIGN

141 Milton Road Cambridge CB4 1XE  
[www.ArtOfFlooring.co.uk](http://www.ArtOfFlooring.co.uk)

## SIMON SPARROW CARPENTER AND JOINER

22 Woollards Lane  
Great Shelford  
Cambridge CB22 5LZ  
Tel: 01223 842380



## D Hatter The Gas Specialist



Carbon Monoxide Kills  
75% of last year's poisonings  
were due to lack of servicing!

D Hatter, specialist in servicing,  
repairs and installation of  
DOMESTIC gas appliances  
including boilers, fires  
and cookers.

.....  
Improve efficiency, save fuel,  
give your central heating  
system a new lease of life,  
have it POWER FLUSHED.

t: 01223 844866  
m: 07747 444 435  
e: [davidhatter1@aol.com](mailto:davidhatter1@aol.com)  
w: [thegasspecialistltd.co.uk](http://thegasspecialistltd.co.uk)





## COUNTRY MARKET



With the holiday month approaching, we are often asked if we close during August. The answer is 'no'. We will be in the Memorial Hall every Wednesday morning and we are always surprised by the number of visitors to the area who

find their way to the Market. Perhaps they find us on our Facebook page <https://www.facebook.com/gtshelfordmarket> or in the *Village News*, or maybe they sense our fresh coffee and home baked cookies.

As I write this it is very warm in Shelford – all right if you enjoy soaking up the sun but not so good if you are a gardener looking at crops and flowers just wilting in heat. We have had a good soft fruit season. At the moment courgettes and cucumbers are plentiful and plums ready for eating are trickling in. The early apples won't be far behind. Cut flowers and runner beans? Our producers are doing their best, but are anxiously waiting for some rain.

The other market stalls should be fully stocked so come and look at all our crafts, baking, jams, marmalades and plenty of local honey – 'set' and 'runny'. Why two types of honey and what is the difference? Google tells me there is no difference in the taste or nutritional value and then goes on to explain the difference in state. Set or runny honey, the choice is yours!

***Make the Market a date – in the Memorial Hall, Woollards Lane every Wednesday from 8.30 to 11.30am***

*Dorothy Doel*

### NOTE

The *Great Shelford Village News* is published by the Editorial Committee, whose members are delighted to receive the many regular and occasional contributions that make it all possible. The Committee accepts such contributions in good faith, but cannot take responsibility for the accuracy of information contained therein. The views expressed are those of the contributors and do not necessarily reflect those of the Editorial Committee. The Committee, of necessity, reserves the right to amend or reject items, for a variety of reasons. In these cases (unless the changes are minor), every reasonable effort will be made to contact the contributor to obtain agreement.

*Editorial Committee*

**Recruitment Specialists**  
for the Built Environment



**Jobs & Career advice in:**

**Technical Moves**

- Land, Development & Property
- Surveying & Project Management
- Architecture & Planning
- Civil & Structural Engineering
- Executive Search, Construction, MEP

**01223 845333**

**technicalmoves.com**

Great Shelford based since 2012

## DAVID FOX CARPENTRY

***Purpose-made  
joinery and fitted  
furniture***

Unit 4 Granta Terrace  
Stapleford  
Cambridge

**01223 845143**

### FOOT PROBLEMS?

**Celia Kenney**

(HCPC Registered Podiatrist)

**Call 07939 227195**

(For home appointments)

Treatments cover:

Nail cutting and other nail  
conditions

Corn and callus  
removal/reduction  
Fungal infections and  
athletes foot

Verru/warts

The Beechwood Practice  
Cambridge CB2 1NT  
Call: **01223 315541**

*Bespoke  
Curtains  
& Blinds*

**01223 836498**



**suecrowcurtains.com**

## CAMBRIDGE WINDOW CLEANING

*Working in & around Cambridge*

- Exterior & Interior Windows
- Conservatory Roofs
- Gutter Cleaning
- Pressure Cleaning,  
Paving, Patios & Drives
- Tile Roof Cleaning &  
Moss Removal



**Tel. 07942780601**

**Email. [info@cambridgewindowcleaning.com](mailto:info@cambridgewindowcleaning.com)**

## WI

On a beautiful evening on 7 July our WI ladies met in the Parochial Gardens behind the Hectare, to visit the newly planted fruit bushes and trees that will in time be of great value to the allotment holders, those visiting the orchards and those living in the almshouses that are being constructed in the meadows. We met several gardeners tending their plots that evening and observed several trains passing in the evening sunshine. We walked through the pathways between the plots full of vegetables and fruits and observed the butterflies and moths that have naturalised with the wild flowers throughout.

What a wonderful village we live in and what a privilege it is to share in our community. Whilst our normal numbers were slightly down due to holidays and the Feast week, we enjoyed our social time and picnic, drew the raffle and finalised plans for the federation lunch and our boat trip, with cream tea soon to be enjoyed in August.

Our normal meetings that take place in St. Mary's community hall will resume on 1 September when we will welcome Margaret Johnson and her talk entitled 'Small is Beautiful' – an evening of patchwork quilting. Our October meeting will educate us on British Sign Language. Visitors are most welcome to these evenings. Enjoy the summer.

*Rosemary Livings – President.*

## RAINBOWS, BROWNIES AND GUIDES

A highlight of this term was a District Campfire at Abington Woods where Rainbows, Brownies and Guides from units that meet in Stapleford, Great Shelford and Trumpington celebrated the Queen's Platinum Jubilee. We made union flags, sang lots of fun – and sometimes very loud – songs, and ate ice cream. Another highlight for Shelford Guides was a lovely evening paddleboarding and canoeing; they ended the term with a hike followed by chips.

Shelford Brownies enjoyed a trip to The Wild Place at Milton Country Park where they played games, made creatures from found materials and had a campfire with s'mores. They ended their term with a visit to ClipnClimb.



Find out more about Girlguiding at [bit.ly/RBGguiding](http://bit.ly/RBGguiding), volunteer at [bit.ly/volGuiding](http://bit.ly/volGuiding), or email [shelforddistrict@gmail.com](mailto:shelforddistrict@gmail.com).

*Lisa MacGregor*

## DIARY AUGUST 2022

Date	Event	Time	Place
3,10, 17,24, 31	Country Market	9am–11.30am	Memorial Hall
3	Guitar Studio (page 40)	2pm	Library
11	Snippy the Crab (page 40)	2pm	Library
17	Gadgety Gizmo Magic Show (page 40)	2.30pm	Library
25	Lego and Duplo (page 40)	2pm & 3.45pm	Library

	<b>BIN COLLECTIONS</b>  <div style="display: flex; justify-content: space-between;"> <div>           Black bins            Blue and green bins         </div> <div>           Tuesday 9 &amp; 23 August            Tuesday 2 &amp; 16 August and            Wednesday 31 August         </div> </div>
	<b>POST BOXES</b> Coppice Avenue, Mill Court (Hinton Way), Library, Old Vicarage, Church Street, High Green bus stop, Stonehill Road, Macaulay Avenue. The latest collection from the Post Office is currently 4.45pm Monday to Friday, 11.30am Saturday.
  	<b>POST OFFICE</b> The Post Office is at Kash Stores, 35 Hinton Way. Open Monday–Friday 9am–5.30pm, Saturday 9am–1pm. Items that Royal Mail is unable to deliver (too big, signature required, etc) will be returned to the Royal Mail Depot in Clifton Road for collection, or redelivery arrangements made.
	<b>LIBRARY</b> Monday 3–7, Tuesday 10–1 & 2–5, Wednesday 10–1, Friday 10–1 & 2–6, Saturday 10–1.

## 2G3S



### What we've been up to

We had a stall at the Shelford Feast on Sunday 3 July and despite being next to the music stage we managed to share awareness of our activities. We also held a very successful bring and buy sale of toys, books and household items.

A Repair Café was held on 30 July at the United Reformed Church in Whittlesford. If you missed this one and have some items for repair, there will be another in Great Shelford on 10 September. Our expert volunteers can repair jewellery, textiles, electrical items, household items, clocks and all sorts of things. For the latest updates/details on Repair Cafés in the area and to book in items for repair, go to [cambridgecarbonfootprint.org/repair-cafes](http://cambridgecarbonfootprint.org/repair-cafes).

### Future events

There will be a Fruit and Veg Swap session on Sunday 28 August from 2-4pm, at Stapleford Pavilion. Come and swap your surplus apples for someone else's courgette glut!

Our next Nature Walk, led by the very knowledgeable John O'Boyle, will be on 20 August at Nine Wells Local Nature Reserve from 2-4pm. See our website for more details. Sturdy footwear and appropriate outdoor wear are advised. We do not accept responsibility for any accidents or mishaps that might arise during the activity.

### Other news

Read on the BBC News website on 5 July: Finnish researchers have installed the world's first fully working 'sand battery' to store green power. The developers say this could solve the problem of year round supply, a major issue for green energy. Using a silo of low grade sand, the device is

**Beach holidays, City breaks, Honeymoons, Weddings abroad, Adventure holidays, Ski, Cruise, Tailormade trips, Flight only, Car hire, Airport hotels and parking** and much more...

## CHERYL HARRADINE

Travel Counsellor

01223 842670

[cheryl.harradine@travelcounsellors.com](mailto:cheryl.harradine@travelcounsellors.com)

[www.travelcounsellors.co.uk/cheryl.harradine](http://www.travelcounsellors.co.uk/cheryl.harradine)



Travel Counsellors ensures  
complete financial protection  
on every booking

travel counsellors



## WATERLILIES

SKIN CLINIC • BEAUTY

Call 01223 844700 Book online at [www.waterlilies.org.uk](http://www.waterlilies.org.uk)

2d Dolphin Way, Off London Road, Stapleford, CB22



THE  
**Natural Tree**  
ARBORICULTURE SERVICES

### Services include:

- o Removal
- o Pruning
- o Reduction
- o Stump grinding
- o Hedge cutting
- o Planting
- o All tree works

Tel:

07733 011123 or 01223 977739

Email:

[enquiry@thenaturaltree.co.uk](mailto:enquiry@thenaturaltree.co.uk)

Web:

[www.thenaturaltree.co.uk](http://www.thenaturaltree.co.uk)



Environment  
Agency

Registered Waste Carrier  
no. CBDL361361



### Square & Compasses

Home cooked breakfast, lunch & dinners

Mon-Sat 9am-2pm/5pm-late | Sun 12-late

Take away & local deliveries

Tel: 01223 843273



### The Plough

Food vans Mon-Wed 5pm-8pm

Home made pizzas & burgers Thurs-Sat

Live Sports | Darts | Pool Table

Tel: 01223 847986

charged up with heat made from cheap electricity from solar or wind. This can then warm homes in winter when energy is more expensive, or on dull days when there isn't sun.

If you are interested in green matters and the environment at all levels (individual, local, national, international), send an email to *greengroupssss@gmail.com* to sign up for our newsletter, or to get more information about our meetings. We are a friendly group and welcome anyone who wants to come along. Also see our Facebook page and our website.

*Helen Hale*

## CROSS-CHANNEL SWIM

Our Aspire Gorillas team swam across the Channel from Samphire Hoe to the French coast on 4 July 2022 in 12 hours 33 minutes.

Thank you for your support, encouragement and generosity for such a worthy cause. We swam our hearts out in the middle of the busiest shipping lane in the world, as container and cargo ships crossed the bow and stern of our support boat, Optimist.

I was swimmer number 6 and took the team into the glassy calm of the separation zone as the sun shone on my back. My second swim got us within a few hundred metres of the French coast and the sea buffeted me about like a cork in a washing machine. No grease or anything else to ward off the cold and the sea. Just a swimsuit, grit, focus and hard work.



We were one of 10 swimming boats that night/day, with all but one making it. Every team member on board the Optimist was seasick, with some all the way there, except when they were in the water, and all the way back. All but one of us had Covid at some point during our training or after our swim.

There is still time to donate so please do support this amazing charity that does such good work for those with spinal injuries.

<https://www.justgiving.com/fundraising/Sarah-Provan1>

*Sarah Provan*

## CAMBRIDGE FLOWER CLUB

We meet at the Memorial Hall, Mill Lane, Whittlesford CB22 4NE

18 August OPEN MEETING with Katherine Kear, President  
of NAFAS 'White Knights'

6pm with stalls and refreshments

Tickets £15.00

For more information about meetings or to enquire about joining  
Cambridge Flower Club, please phone Freda on 01223 891464 or email  
[fredaorgee@gmail.com](mailto:fredaorgee@gmail.com)

## OLD NEWS

### Extracts from the Great Shelford Chronicle 1774–1868

*Compiled and republished by Anne George, Glynis Trundle,  
Margaret Ward and Alan Bullwinkle, 1993*

#### 1 August 1846

ACCIDENT AT EASTERN COUNTIES RAILWAY – as the down mail two o'clock train was passing by a field of barley, the property of Mr. Henry Grain, situated about a mile from the Shelford Station, a piece of live coke was blown from the firebox of the engine, and ignited the crop. The flames spread with great rapidity, and before they could be extinguished had consumed above two acres of a very good crop of barley. In the adjacent fields were a number of gleaners, who came to the scene of action, and with sticks and their gleaning bags, knocked out the fire. The barley ignited in an incredibly short time, but of course the train passed on completely unconscious of the legacy of mischief and damage it had left behind it. The field presented a very curious appearance the next day, when we had an opportunity of seeing it. The portion burned resembled the scorched surface of an eastern desert which had been visited by a sirocco blast, and the remaining part was so trodden down and injured as to be worth very little. We are not yet advised that the Company have offered Mr. Grain any compensation for the loss he has sustained.

#### 29 August 1846

EASTERN COUNTIES RAILWAY – have made good the damage done to Mr. Grain's field of corn, which was set on fire by sparks from the engine. They have also sent a donation of five pounds to the men who exerted themselves in extinguishing the flames.



## Kwanmusic.co.uk

Kwan Music offers:  
Professional tuition by qualified  
and highly experienced  
teachers on piano, organ,  
bassoon, theory, musicianship  
and also assistance with A  
level and GCSE works.

For a free trial lesson with  
no obligation contact:  
**musicoaktree@zohomail.eu**  
or visit:  
**www.kwanmusic.co.uk**  
for more info.



**ENTIRE**  
GROUP



The Complete Gas Heating and Plumbing Company

**Plumbing • Heating • Gas  
Bathrooms • Water Softeners  
Property Maintenance**

**Tel: 01954 204044 • Web: [www.entiregroup.co.uk](http://www.entiregroup.co.uk)  
Email: [service@entiregroup.co.uk](mailto:service@entiregroup.co.uk)**

COVID  
secure and  
safe for  
patients  
and staff



### Welcome to Coach House Health Care

– a newly-refurbished and renovated multi-disciplinary clinic,  
situated in the grounds of Anstey Hall, where you can now find  
all your health and well-being practitioners under one roof.

Our qualified, experienced practitioners  
offer treatments in the following areas:

- Podiatry/Chiropody
- Physiotherapy
- Osteopathy
- Sports Massage
- Psychiatry
- Clinical Psychology
- Non-Surgical Cosmetic Treatments
- Plastic Surgery Consultations,  
including skin lesion assessments
- Naturopathy and Nutritional  
Therapy
- Life Coaching/Positive Psychology



Animesh Patel, Plastic  
Surgeon and co-owner  
Lorna Bacon, Podiatrist  
and co-owner



#### COACH HOUSE HEALTH CARE

The Courtyard, Anstey Hall, Maris Lane,  
Trumpington, Cambridge CB2 9LG  
01223 340491  
[reception@coachhousehealthcare.co.uk](mailto:reception@coachhousehealthcare.co.uk)  
[www.coachhousehealthcare.co.uk](http://www.coachhousehealthcare.co.uk)  
Free car parking and wi-fi

#### CLINIC ROOMS AVAILABLE TO RENT

If you are a qualified practitioner,  
looking for a clinic to practice,  
contact us to find out how to join  
our team.



**Good coffee,  
that does good!**

**[www.facebook.com/  
caracoffee123](https://www.facebook.com/caracoffee123)**

**JASON KIRBY**  
Professional Painting  
& Decorating Ltd

*A Professional Service  
from Start to Finish*

**Tel: 01954 211775  
[www.jasonkirbyltd.co.uk](http://www.jasonkirbyltd.co.uk)**



## SHELFORD SUPPORT GROUP APPEAL



Have you ever thought about doing a bit of volunteering for your community?

Have you ever thought about how you would get to hospital appointments, the health centre, dentist, hairdressers or social outings if you had no transport or had been told to stop driving no matter what your age?

This is where the Shelford Support Group can help out, just as it has been doing for the last 19 years.

**This is an appeal to you to help us, by asking you to seriously think about volunteering to help keep the group running for the good of the community.**

**We need both coordinators and drivers!**

**Coordinators** manage the process of matching drivers to passengers requesting transport. You would work on a rota basis (two people each week) using your own phone and answerphone. As a coordinator you would record each request received on our shared calendar then contact drivers from the list supplied.

**Drivers** We always need drivers! You can be as flexible as you like; we respect any commitments you already have and we understand that you may not always be available when asked. Once you have agreed a journey you just need to be sure to take your passenger to their appointment and return them at the end.

So please give volunteering some thought. It is very rewarding and a service much appreciated by residents in our local community who use it. Expenses, both on phone calls and fuel, can be reimbursed at a fixed level.

For further details, contact Gillian Northmore at [shelfordsupport@googlemail.com](mailto:shelfordsupport@googlemail.com) or phone her on 504542. So go on, give us a call and we will answer any queries you have.

## PAROCHIAL CHARITIES



### At the Feast

A big thank you to everyone who visited the Parochial Charities stall at The Feast. Many were drawn to our silent auction, but the trustees were also on hand to explain the availability early next year of further affordable accommodation in the village when the charity's 21 new almshouse homes will be ready for occupation by Great Shelford people – individuals, couples, and families – on low incomes and in housing need.(see notice on next page.)

For the record, our silent auction raised just over £300 for the good causes supported by the Shelford Feast. We would like to thank the local artists, craftspeople and other donors who gave items for the auction.

**Any thoughts?** We experience low level but persistent vandalism and graffiti on our land at More's Meadow. We know the problem is not unique to the charity; parish council facilities, the rec in particular, suffer similarly. And while the financial impact is often minor, the resulting demotivation of supporters and volunteers – many of whom have planted trees or funded commemorative benches – really matters to us.

As trustees, we will continue to keep our land open and accessible for all - but we would be very interested to hear villagers' thoughts as to how we might prevent or mitigate this antisocial behaviour.

*Brian Connellan, Trustee*

## **AFFORDABLE LIVING IN GREAT SHELFORD FURTHER HOMES AVAILABLE SOON**

The charity is building a further 21 almshouses in the village. Sited at the end of More's Meadow, these one, two and three bed homes are designed for independent, low-cost living and will be available from early 2023.

Our almshouse residents pay a *monthly maintenance contribution* which we set at 50% of the rental rate for similar private property in the village.

We will soon be inviting applications from Great Shelford residents - individuals, couples, and families - on low incomes and in housing need.

**Application forms and copies of our Residents' Handbook will be available from 1 September 2022:**

- On our website: [gspc.org.uk](http://gspc.org.uk)
- By emailing: [clerk@gspc.org.uk](mailto:clerk@gspc.org.uk)
- From our partner, John Huntingdon's Charity (JHC), 189 High St, Sawston, CB22 3HJ  
[office@johnhuntingdon.org.uk](mailto:office@johnhuntingdon.org.uk)  
01223 492492

**Completed forms should be submitted to JHC by 30 September 2022**

JHC can provide assistance with completing your application.

Applications will be processed by JHC and then assessed anonymously by Parochial Charities trustees. Shortlisted applicants will be invited to attend an informal interview.

Typically, a successful applicant will be eligible for a property with one bedroom per:

- adult couple (regardless of marital status)
- other adult aged 16 or older
- two children under 16 and of the same sex
- two children under 10
- other child



## THE FULBOURN CAT SITTING COMPANY

Operating in the Cambridge area, we offer in-home cat sitting based on your cat's individual needs, giving your feline companion safety, comfort, and familiarity of their own surroundings.

Our aim is to provide professional, reliable, and loving care.

We are fully insured, trained, DBS-checked and NarpsUK-registered.

E-mail: [info@thefulbourncatsittingcompany.co.uk](mailto:info@thefulbourncatsittingcompany.co.uk)

Tel: Laura 07742969374 | Chloe 07704207560

Web: [www.thefulbourncatsittingcompany.co.uk](http://www.thefulbourncatsittingcompany.co.uk)



## TM Electrical SERVICES

The Complete Electrical Service

Local - Experienced - Competitive

E: [enquiries@tm-electrical.com](mailto:enquiries@tm-electrical.com)

[www.tm-electrical.com](http://www.tm-electrical.com)

38 Cheddars Lane, Cambridge CB5 8LD

Tel: 01223 441111

FREE ESTIMATES



## Carpet, Upholstery, Fine Rugs, Stone Floor Cleaning, Wood Sanding

*"We were very satisfied with the technician and the way the carpets were cleaned. He was very polite and phoned to say he was coming and again later to let us know he would be with us shortly. Thank you for your services." Mrs Burling*

Call today  
**01223 863632**



Please  
quote  
Great  
Shelford  
Mag

Art of Clean, Denny Lodge Business  
Park, Ely Road, CB25 9PH  
[www.artofclean.co.uk](http://www.artofclean.co.uk)

# THE GOG

FARM SHOP  
ESTD • CAMBRIDGE • 1919

BUTCHERY • DELICATESSEN • GROCERY • CAFÉ

**WWW.THEGOG.COM**

## **BETTER WAYS THAN BUSWAYS CAMPAIGN (BWTB)**

BWTB is campaigning against a greenbelt busway in South Cambs around Magog Down, advocating instead for an alternative route following the A1307 corridor which would deliver the same benefits but at a fraction of the cost. We've had another busy month...

I attended a **Parish Council/South Cambs District Council (SCDC) Cabinet Liaison meeting** and asked a question on protecting the environment and the carbon cost of the new road. The response from the Leader of the SCDC, Cllr Bridget Smith, was that SCDC are providing homes and decent transport for working families. In the process she failed again to recognise that all the Cambridge SE Transport (CSET) objectives can be achieved with a better route. No answer was forthcoming to the point about the poor economic benefit and the fact that Cambridge Biomedical Campus (CBC) is expanding towards the alternative route proposed by BWTB along the A1307 corridor.

A number of us attended in person **the GCP Executive Board meeting** on 30 June. It was noteworthy that Cllr Brian Milnes, our own County Councillor, voted to progress CSET in its current route. We asked several questions and responses by the GCP Officer are set out below.

**Q1:** CSET was designed to fit with the former Mayor of the Combined Authority's Cambridge Autonomous Metro (CAM). This meant that it had a much higher specification including segregated lanes so that it could be part of an integrated regional transport system. Given that this scheme has now been dropped, will the GCP review the scheme against an optimal scheme in the A1307 corridor?

**A1:** *CSET is a standalone scheme. The route decision predated CAM.*

**Q2:** The 2018 consultation was skewed because only one off road route was offered as opposed to two on road (A1307) schemes, thus splitting the votes for the on road option. By contrast, Anthony Browne MP's consultation (with more respondents than for the GCP's) showed that 81% would definitely not, or probably not, support the GCP busway. In light of this, will the GCP have regard to overwhelming public opinion and review their route?

**A2:** *GCP followed guidance on consultations.*

**Q3:** Over recent years there have been several studies of the Haverhill-Cambridge corridor, all showing a stronger business case than CSET. The business case will be further weakened by the imposition of safety speed limits and additional crossings such as for the Rangeford retirement village, whereas a route through the proposed CBC expansion along the

## Care For Trees



Qualified  
Reliable  
Insured  
Affordable

For a free quote call **Mike Wallman** on 01223 846390 or email [info@carefortrees.co.uk](mailto:info@carefortrees.co.uk)

FAMILY **Barker Bros** BUTCHERS  
ESTD 1843



Packaging  
Free  
Vegetables  
now on  
Sale

**QUALITY, LOCAL MEAT FOR EVERYDAY**

43 High Street, Great Shelford  
Tel: 01223 843292 [www.barkerbrosbutchers.co.uk](http://www.barkerbrosbutchers.co.uk)

## J M R Electrical



**Electrical  
Contractor**



All Domestic, Industrial &  
Commercial work undertaken

21 Ashen Green, Great Shelford, Cambridge  
Email: [jmr.electrical@hotmail.com](mailto:jmr.electrical@hotmail.com)  
Tel: (01223) 844680 Mobile: 07766 68 38 86

## QUALITY BESPOKE PICTURE FRAMERS

**SIMON ROBINSON  
& SON**

Professional, Friendly Service  
Over 25 years' experience

Wide Selection of Frames  
Conservation Materials Used  
UV Protective Invisible Glass

Artwork/Photography  
Needlework/Tapestry  
Oil Paintings and  
Canvases Stretched  
Unusual Objects Framed  
Made to Measure Mirrors  
Limited Edition Prints Available

**Tel. 01223 873123**

Opening Hours:  
Tues-Fri. - 9am-5.30pm  
(Saturday - By Appointment)

[www.robinsonframes.co.uk](http://www.robinsonframes.co.uk)  
[lester@robinsonframes.co.uk](mailto:lester@robinsonframes.co.uk)

**STUDIO 6, PENN FARM,  
HARSTON RD,  
HASLINGFIELD, CAMBRIDGE  
CB23 1JZ  
(AMPLE PARKING)**

## HEATWAVE SERVICES



- Qualified to service and repair gas, oil and LPG boilers
- Installation of new central heating systems, unvented hot water cylinders
- Landlord Certificates
- Worcester Bosch Accredited Installer

Whittlesford based company for all your heating and hot water requirements

Tel: 01223 837774 or 07795 304013  
Email: [heatwaveservices@btconnect.com](mailto:heatwaveservices@btconnect.com)  
15 Maynards, Whittlesford, Cambridge, CB22 4PN

A1307 will improve the on-road business case. Will the GCP therefore reassess the business case for all three strategies and make public the outcome of that reassessment?

**A3:** *The GCP complies with its statutory requirements. The full business case will be presented to the Board later.*

**Q4:** CSET poorly serves the villages and undermines existing bus services; it has an adverse impact on the Countryside Park; and it conflicts with the construction of Cambridge South Station.

**A4:** *CSET meets the criteria set out in the Local Plan. Assertions about benefit-to-cost ratios are inaccurate. Following Local Liaison Forum feedback, the route will serve the villages as well.*

**Q5:** The busway will now separate the new countryside park from the retirement village. Where is the compatibility with the Planning Inspector's finding, in granting the planning appeal for the retirement village and associated country park as one unified project?

**A5:** *The busway was included in the Planning Inspector's decision and the GCP have had dialogue with the developers since.*

### **Impact of the Rangeford retirement village on the busway**

The busway must now carve through the countryside park and around the retirement village, and hence two alternative busway stop locations in Stapleford are now open for consultation. Misleadingly, the GCP consultation states that Option 2 (the slightly cheaper route) has the bus stop nearer the village: all of 10 metres! What they don't point out is that Option 2 creates a triangle of land which developers are already earmarking for housing. Issues over access to the countryside park from the retirement village (particularly for older people with mobility issues) and environmental damage are also ignored.

### **Meeting the GCP Exec Board**

We have a meeting arranged with the GCP Executive Board (first requested at the beginning of February 2022), albeit Cllr Bridget Smith Leader of South Cambs is unable to attend.

### **Mayor of Combined Authority consultation**

The Mayor's consultation on the Local Transport Plan closes 4 August. The last section <https://yourltcp.co.uk/vision-and-objective> provides an opportunity to state that the current busway proposal is misguided.

**The GCP's consultation closes at midday on 22 August. Your opinion will count so please respond:**  
[www.greatercambridge.org.uk/CSET-Stapleford2022](http://www.greatercambridge.org.uk/CSET-Stapleford2022).



**Gavin Langford Architects**  
[www.gavinlangfordarchitects.com](http://www.gavinlangfordarchitects.com)



**RIBA**  
 Chartered Practice

The *Great Shelford Village News* is unable to check or verify the warranties or representation made by their advertisers and must therefore exclude any liability whatsoever arising from any advertisement in the *News* magazine, nor do any statements necessarily accord with the views of the editors.

*Great Shelford Solicitors*



**DAVIES**  
 solicitors advocates & mediators

- Family
- Divorce & Separation
- Children
- Civil Disputes
- Wills & Probate
- Estate & Tax Planning
- Powers of Attorney
- Court of Protection

*For a quality and attentive service*

Please Call: **01223 842211**

[www.daviessolicitors.co.uk](http://www.daviessolicitors.co.uk) [law@daviessolicitors.co.uk](mailto:law@daviessolicitors.co.uk)  
 30 Woolards Lane, Great Shelford, Cambridge CB22 5LZ

*Free and easy parking*

**MegaStorage**  
 SAFE & SECURE SELF STORAGE

**Self Storage in Sawston**  
 Clean, Dry & Secure, 24/7 Access

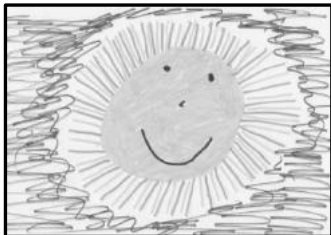
 **ssa**  
 self storage  
 association  
 United Kingdom

[www.MegaStorage.co.uk](http://www.MegaStorage.co.uk)

**01223 833 777**



## LIBRARY UPDATE



Have your children registered for the Gadgeteers **SUMMER READING CHALLENGE** yet? There's still plenty of time to join. Challenge sessions are from 10.30am-12.30pm on Tuesdays and Fridays through the holidays but children can also drop in any time the library is open to collect

their stickers. Holiday packs are available if you'll be away all summer. Stickers are given out each time a book is read – read six books over the holidays and get a certificate and a medal!

**OTHER CHILDREN'S EVENTS:** please collect a summer event leaflet from the library for details. Places need to be pre-booked and payment in cash at the time of booking is appreciated:

- **CAMBRIDGE GUITAR STUDIO** – Wednesday 3 August 2pm (£2 per child). Find out about the guitar and ukulele, listen to them being played and have a free mini-lesson yourself!
- **SNIPPY THE CRAB Author event** – Thursday 11 August 2pm. (£2 per child). Local author Alison Miles will explain how she writes and illustrates these popular books. You'll have a chance to try out your own ideas too!
- **THE GADGETY GIZMO MAGIC SHOW:** Wednesday 17 August 2.30-3.45pm. (£5 per child).
- **LEGO AND DUPLO:** Thursday 25 August 2-3.30pm and 3.45-5.15pm. (£2 per child).

**POP IN AND CHAT:** there will be another supportive get together for parents and carers of children with additional needs on 10 August at 1.30pm. Children are very welcome too. Please pre book a place: phone 01954 284 672 or email

*childandfamilysouth@cambridgeshire.gov.uk*

Contact details:

phone: 0345 045 5225. Email:

*cambourne.referral@cambridgeshire.gov.uk*

## COMPUTER PROBLEMS? CALL EAGLE ANALYSIS

We have 40 years' experience and are Shelford-based.

- Need a new computer, laptop, tablet, iPad, printer, digital camera, smart TV? We can advise on the best options and supply and install.
- Need to set up Internet and network; problems with wireless deadspots? We can sort that for you.
- Dead computer or printer? We can fix it.
- Deleted your photos? We can recover them.
- Got a virus? We can remove it and prevent recurrence.
- Being scammed? We can help.



Call Mike Nettleton on 01223 721366 (M 07905 356468)

email: [info@eagleanalysis.co.uk](mailto:info@eagleanalysis.co.uk) web: [www.eagleanalysis.co.uk](http://www.eagleanalysis.co.uk)

**SOPHOS**  
Silver Partner



REGISTERED  
PARTNER

Ontrack® Data Recovery  
Authorized Partner



## The Country Store

*Pet, Equine, Smallholder,  
Shooting supplies,  
Country clothing,  
Wild bird food*

Unit 12a, Sawston Park,  
Pampisford, Cambridge

CB22 3EE

[www.thecountrystore.co.uk](http://www.thecountrystore.co.uk)

Tel 01223 837977

**SAM  
McGUINNESS**

**CURTAIN MAKING  
ROMAN BLINDS  
SOFA COVERS**

Call or email  
for a free quotation  
07808 737518

[samcampbell39@hotmail.com](mailto:samcampbell39@hotmail.com)

## D.L.M. AUTOS

63a Orchard Road, Great Shelford CB22 5AA

**MOT - SERVICE - REPAIR**

**01223 844828**

[www.dlmautos.co.uk](http://www.dlmautos.co.uk)



**FIRST CARE HOMES**

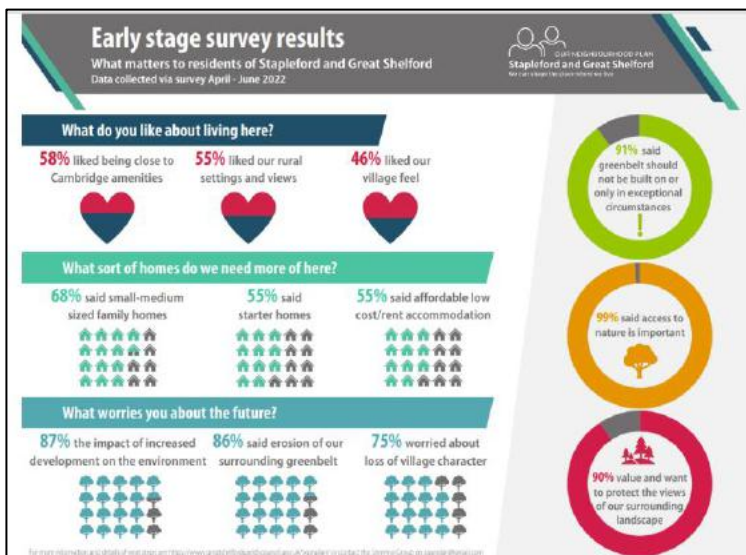
WHERE CARE COMES FIRST

## The Cambridgeshire Care Home

Situated in Great Shelford, the premier choice for a boutique care home in historic Cambridge. We provide unrivalled care using state-of-the-art technology and offer Dementia, Nursing and Residential care with a fully inclusive service package.

To enquire or book a showround call 01223 551 200 and ask for Yvonne Quigley, Customer Relations Manager.

## NEIGHBOURHOOD PLAN



Between April and June 2022, the Neighbourhood Plan steering group ran a first consultation for residents and workers of Stapleford and Great Shelford. This preliminary survey was intended to help identify what matters to local people on issues where a Neighbourhood Plan may have some influence. We asked questions about:

- village identity
- development locations
- environmental concerns
- local economy
- what you like about living and/or working here
- housing needs
- greenbelt
- transport choices
- future concerns about our villages

A total of 289 responses were received: 58% from people living/working in Great Shelford and 42% from Stapleford, with a healthy representation across all adult age categories.

Below is a very short, qualitative summary of selected findings:

- Most of us currently consider Stapleford and Great Shelford as villages but foresee them as part of Greater Cambridge by 2040.
- We need more affordable, starter and small/medium-sized homes.
- New developments should be environmentally sustainable.
- We value our landscape setting, access to it and visual links with it.

- Our greenbelt should not be developed, or only in very special circumstances.
- Loss of biodiversity and carbon emissions are our biggest local environmental concerns.
- We most commonly travel by car due to distances involved or for convenience.
- We would use local shops and businesses more if there was a wider range of shops and services, including access to banking facilities or a cash point.
- Thinking about the future of our villages, we are worried about the environmental impact of development, increasing traffic congestion, green belt erosion and loss of village character.

Outcomes will be compiled into a report available online and in hard copy at Great Shelford Library, at the end of the summer.

*Cllr Jenny Flynn, Chair of the Neighbourhood Plan Steering Group*

## CRICKET CLUB

Mixed results since the last report, with three victories followed by two defeats. Harry Walker's 4 for 28 set up an easy victory over Cambourne by seven wickets. It was much closer the following week against Cam Kerala who set a challenging target of 208 in a match reduced to 35 overs by rain (yes, there was actually some rain in June!); half centuries by Jeff Wilson and Raj Rangasamy led the way, but after a mini collapse it needed Mark Milne to avoid a hat trick and hit the winning runs with two balls to spare.

Against Comberton, a good score was made to look exceptional when Fazal Lee ran through their batting with figures of 5 for 17. But we missed him the following week when we were comfortably beaten by Longstowe despite Jonathan Ede's unbeaten century. The second defeat came at Harlton, a lovely location for cricket but unfortunately a minefield of a pitch. Theo Ball somehow managed to make 35 and also got amongst the wickets, but we lost by four wickets. However, there was a feeling of relief to return without serious injuries.

Home 1<sup>st</sup> XI matches in August are on Saturdays 13 and 20 starting at 1.30pm. Spectators very welcome.

It is fantastic that around 100 local children took part in the after school Tuesday and Friday All Stars and Dynamos sessions this term organised by the club (see photos on next page). Thanks to all those who helped out with the sessions. We had a lot of fun and will be back again next summer!

*Peter Ede (Chair) and Julia Creed (Junior co-ordinator)*



Young cricketers: the All Stars



Young cricketers: the Dynamos



# GATWARD & SONS

**BUILDING ON EXPERIENCE**  
CARPENTRY, JOINERY & BUILDING CONTRACTORS

☎ **01223 570 143**

📞 **07525 494 478**

✉ [contact@gatwardandsons.co.uk](mailto:contact@gatwardandsons.co.uk)

**BASED IN STAPLEFORD**

**EXTENSIONS  
CONVERSIONS  
RENOVATIONS  
ALTERATIONS**

## Rainbow Pre-school

A unique place to play and learn in Shelford



A caring community pre-school  
in Shelford for 2-4 year olds  
Open Mon-Fri from 9am to 3pm  
(term-time)

For more information visit  
[www.rainbowshelford.co.uk](http://www.rainbowshelford.co.uk)  
or contact  
[enquiries@rainbowshelford.co.uk](mailto:enquiries@rainbowshelford.co.uk)

Tel: 07985 216603

Manager: Allison Tomlin

## Thomas J Shearing

### Furniture Restoration and Traditional Upholstery

Comprehensive re-upholstery service  
Vast range of furnishing fabrics  
Antique and modern furniture restored

### Picture Framers and Restorers

French polishing and other finishes available  
Bespoke mirrors made to order

Serving Great Shelford and Cambridgeshire  
Tel: 07801 357148 Email: [shearing@mail.com](mailto:shearing@mail.com)



**PANTHER TAXIS**

Get out and about and save money with  
**PANTHER TAXIS**

Did you know that we now offer a REDUCED RATE  
village to village service to or from YOUR VILLAGE?



Only pay  
door to door  
not a penny  
more

Find out how much  
you can SAVE by  
downloading our app



With a fleet of over 650 vehicles running  
24/7, you know who to call.

**01223 715715**  
[www.panther taxis.co.uk](http://www.panther taxis.co.uk)

Prices are fixed based on the Cambridge metered rates  
to or from the included villages.  
Villages outside of this area may still have a callout fee.

## CHIMNEY SWEEP

**J. L. WIGHT**  
Guild of Master  
Chimney Sweeps



Fully Insured

Advice given / problems  
solved

Certificates issued  
**01954 253315**  
[www.camsweep.co.uk](http://www.camsweep.co.uk)

9 Cow Lane, Rampton

## FOOTBALL CLUB

### First Team news

Coming into the business end of the season the first team still had it all to play for. The league had still to be decided and a semi-final of the Premier League cup against Cambridge University Press awaited.



Shelford got March off to a flyer with wins against Somersham and Isleham. Next up was Cambridge University Press (CUP) in the semi; 0-0 at full time was followed by an agonising 6-7 defeat. Back to league business, wins against Linton and Gamlingay, along with a draw with Cherry Hinton and a defeat to Over meant that Great Shelford FC secured another Kershaw Premier League title to add to the rich success the club has enjoyed of late. It was a hugely competitive season with Shelford finishing the season five points above nearest rivals, CUP.

Despite the growing challenge of teams around them, Shelford always seem to find a way to get over the line. Huge congratulations to Manager, Nick Baggaley, Assistant, Lee Pacey, all the players, and everyone associated with the club.

### Reserve Team news

March and April were to prove pivotal in the Reserves charge on potential silverware for the season. At the beginning of the busy final period of the season, the boys had two cup semi-finals to be played and were in the leading position in League 1A.

March started with a solid draw away to a strong Debden side. An uncharacteristic loss away at Milton reserves followed, which meant they would have to win their remaining league games to ensure promotion. The reserves also waved goodbye to top goal scorer and captain, Jake Hayden-Smith, who has emigrated to Australia.

Two cup semi on the bounce came next; a home win on penalties to Chatteris Town, followed by a 1-2 away win against a really good Burwell swifts side. Two cup finals for the boys to look forward to!

In the league, the campaign finished with disappointing losses to Melbourn and Debden, along with a win against West Wrattling Reserves and a draw with Cottenham United. We would have to settle for third in the league and wait to see if we are to be promoted.

In the Cambs Junior Challenge Cup (vs Burwell Tigers) the boys dominated but could get the all important winner, with the game going to penalties. Burwell took their penalties better than Shelford and took the win. On the last game of the season we faced Chatteris Town under the lights at Newmarket. A



comfortable and confident performance saw us up 1-0 until the last kick of the game, Chatteris taking it, AGAIN, to penalties. With super keeper, Rob Smyth between the sticks, the boys were confident and a penalty kicks victory secured the Creak Charity Shield! Congratulations to Eddie New, Chris Gethins and all the players on a hugely successful season.

The club continues to make progress under the current setup and is proud to represent Great Shelford in such a positive manner, both on and off the pitch. We turn our attention to having some much-needed downtime before preparation begins for season 22/23.

*Chris Gethins*

## WHAT IS ARTHUR'S SHED?



Arthur's Shed is a purpose-built studio set in the beautiful grounds of the Arthur Rank Hospice at Shelford Bottom. Sessions are open to the public and you do not need to have a connection with the charity to attend.

Sessions are free of charge although a suggested donation of £5 is welcomed to

cover the cost of materials.

**Paper Crafts:** Learn to make paper hedgehogs and other paper crafts.

**Card Making:** Learn to create beautiful cards, follow a design or see where your imagination goes.

**Astronomy:** Learn all about the sun, moon and stars and build your very own sun dial. (We recommend attending all six sessions.)

**Clay Work:** Design and decorate small, air dried clay sculptures.

**Sugar Craft:** Make a beautiful sugar craft post.

**Model Railway:** Build and use our large model railway with fellow enthusiasts.

To find out more or to book, contact us at 01223 675871, email [Arthurs.shed@arhc.org.uk](mailto:Arthurs.shed@arhc.org.uk) or look online at <https://www.arhc.org.uk/open-to-all/arthurs-shed/>

**Coronavirus:** To ensure everyone's safety, we

- ask that you wear a mask throughout the session if required to
- have limited each session to four people to socially distance
- thoroughly clean and ventilate the space between sessions.

*Hannah Touhey Voluntary Services Manager*

## TRADITIONAL RESTORATIONS

**A FRIENDLY LOCAL SERVICE  
FOR ALL TYPES OF ANTIQUE &  
MODERN FURNITURE**

A complete restoration service:

- All types of furniture repairs
- Traditional French polishing
- Hard-wearing, high-quality lacquer finishes
- A comprehensive re-upholstery service



Over 20 years working in the local area  
Free estimates & advice given on all work

**JONATHAN PORTER**

**5 BABRAHAM ROAD, SAWSTON, CAMBRIDGE CB22 3DQ  
TEL 01223 835515 MOB 07932 611184**

## STEVE the PLUMBER

Steve the Plumber  
is a local plumber  
with a friendly,  
helpful and reliable  
service.  
Small or larger jobs  
undertaken.  
Competitive rates.



Please call 07803922517  
or email  
steve\_the\_plumber@me.com



**Paul J Neaves**

## Neaves Electrical Ltd

*All aspects of electrical  
work undertaken -  
installation, maintenance  
& repairs*

**www.neaveselectrical.co.uk**

Telephone:  
01223 290956  
Mobile:  
07702 280687  
Email:  
paul@neaveselectrical.co.uk



**Free Estimates & Advice**

Block paving driveways, patios & paths  
All landscaping services  
Self-sufficient with own machinery  
Over 10 years' experience  
Free warranties:

- 5 years on workmanship
- 10 years for materials
- Manufacturers' guarantees

**BRADSTONE**  
Assured



**amsbuildingandlandscaping.co.uk**

01638 721893 info@amsbuildingandlandscaping.co.uk

## ANGLIA TREE CARE



*A O'Connor*

**Tel: 01223 424454**

23 King Street  
Cambridge CB1 1LH

*Tree surgery  
Stump grinding  
Hedge maintenance  
Fully qualified & insured*

*All work carried out to British  
Standard BS3998*

*Member of the Guild of  
Master Craftsmen*



**www.angliatreecare.co.uk Email: info@angliatreecare.co.uk**

## **TENNIS CLUB MEET YOUR COMMITTEE**

The committee at the tennis club has changed a little this year, so for the next few months we will be bringing you short interviews with members of the committee. First Angharad Harris, our new Chair.



**Q: What's your name and where do you come from?**

A: My name is Angharad. I was born in London, but spent the majority of my childhood in Oxfordshire. Then I moved to Cambridge for university, aged 18, and have never looked back.

**Q: How long have you been playing tennis?**

A: I first started playing aged 9 when we moved from Surrey to Oxfordshire. I joined Great Shelford in 2016.

**Q: Why did you join the committee at the tennis club?**

A: Sport has brought me so many things in my life – skill, a sense of achievement, discipline, friendship, happiness, an escape from reality. If I can volunteer my time to ensure that some other young person can benefit from all the advantages of local sport, then for me that is time well spent. It's a way for me to give back to my community.

**Q: What's the one thing you want readers to know about you?**

A: How to pronounce my name! It's a Welsh word and, as such, is totally phonetic and has the emphasis on the penultimate syllable. The 'g' is soft, like at the end of 'sang', and the 'h' is not silent. So it is pronounced 'ang-HA-rad'. If you're interested, it means 'much beloved'.

**Q: What's your guilty pleasure?**

A: Only one?! Haagen-Dazs salted caramel ice cream.

**Q: If you really knew me you would know ...**

A: I played lacrosse for Wales whilst at university.

## **SAWSTON FUN RUN SUCCESS**

Over a hundred people attended Sawston Village College in mid July to celebrate the success of the May 8 Fun Run & Walk. This attracted over eleven hundred entrants, largely from Cambridgeshire villages. It raised £14,225 for the 2022 beneficiaries including East Anglia's Children's Hospices and Rowan, a local charity supporting adults with learning disabilities.

## FOXCOTTE FENCING

A family run business offering:

- \* A landscaping yard
- \* A DIY shop
- \* Garden machinery sales and services
- \* Tree surgery
- \* Woven willow fencing
- \* Garden studios

Foxcotte Fencing,  
Comberton Road,  
Barton,  
Cambridge CB23 7BA

Telephone:  
01223 263702

Email:  
info@foxcottefencing.co.uk

Web:  
www.foxcottecambridge.com



## Jackson Cox Opticians

A Saxena MCOptom  
Optometrist

- NHS & Private Eye Tests
- OCT Eye Scans
- Cataract, Glaucoma and Macular Degeneration Checks
- Contact Lens Checks

30a Woollards Lane, Great Shelford, CB22 5LZ  
Telephone: 01223 840 441  
www.jackson-cox-optician.com



- Home • Workplace • Public •

01223 430040

www.cambridge-evpoints.co.uk

Contact our experienced team for all your EV charging needs.



CAMBRIDGE  
ELECTRICAL  
SOLUTIONS LTD



After a buyer who loves  
what you've done?

Best talk to Bidwells

BIDWELLS



PROUD SPONSORS OF SHELFORD RUGBY CLUB

01223 624 573  
talktobidwells.co.uk

## WHAT'S ON IN AUGUST

A round up of what's on at some of the venues near us. For more information, times, ticket prices and bookings, please contact the organisation. This information has been taken from websites, can be subject to change and the event may already be fully booked.

CAMBRIDGE ARTS THEATRE	
2 - 6	Jitney (US Drama)
9 -14	Zog and the flying doctors (ages 3+)
16-21	The play that goes wrong (Comedy)
27 - 28	Gary Barlow: a different stage (One man show)
Telephone: 01223 503333 Web: <a href="http://www.cambridgeartstheatre.com">www.cambridgeartstheatre.com</a>	

OTHER ACTIVITIES IN CAMBRIDGE	
Daily	Summer with the museums – activities for all ages at various venues, see <a href="https://www.admin.cam.ac.uk/whatson">https://www.admin.cam.ac.uk/whatson</a>
20 August	Bioblitz Bookable activities at the Botanic Garden
	Cambridge Book Benches Trail – see <a href="https://www.love-cambridge.com/home/the-cambridge-book-bench-trail/">https://www.love-cambridge.com/home/the-cambridge-book-bench-trail/</a> for details and map

## HOW TO CONTACT GREAT SHELFORD VILLAGE NEWS

We are pleased to receive articles, letters and notices for community events for consideration. Please send by email (preferably as a Word document), or send paper items, with contact details, to Judith Wilson, 11 Elms Avenue, Great Shelford, CB22 5LN. The copy date is usually the second Friday of the month. See the *Next Issue* box for next month's date. For guidance, please note that an article of around 400 words, without a photograph, will fill a full page. Notices for events work best as a half page (half A5) in landscape format.

### General enquiries and articles for publication:

01223 842553 [gsvneditorial@gmail.com](mailto:gsvneditorial@gmail.com)

### Commercial advertisements

These are for a 12 month period, renewed in January. There is a waiting list.  
[gsvnadverts@gmail.com](mailto:gsvnadverts@gmail.com)

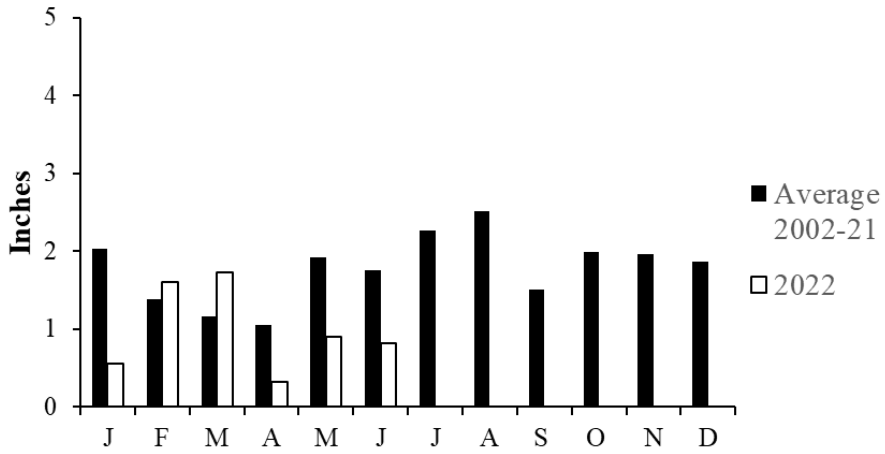
### Subscriptions and online payment details

01223 842993 [gsvnsubs@gmail.com](mailto:gsvnsubs@gmail.com)

### Editorial Committee

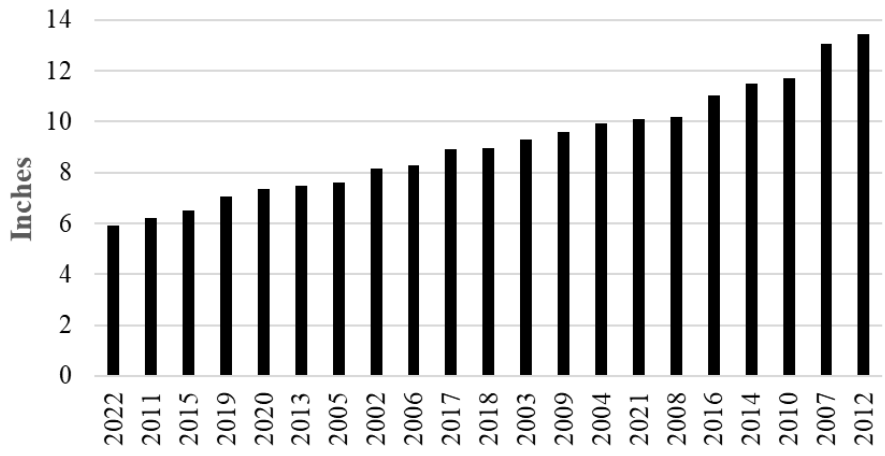
Duncan Grey, Bridget Hodge, Marjorie Smith, Judith Wilson

# Great Shelford Village Rainfall 2022



*From data supplied by Angus Campbell*

# Great Shelford Rainfall Jan-June 2002-2022



## LOCAL ORGANISATIONS

2G3S Green Group	Linda Whitebread	greengroupsssss@gmail.com	843438
Badminton (Little Shelford)	James Newman	james@jamesnewman.org	843272
Bowling Club	Alan Edwards	alanedwards505@gmail.com	666965
Brownies, Guides, Rainbows	Lisa MacGregor	shelforddistrict@gmail.com	843021
Bunch – Feast	Duncan Grey	dsg@post.com	842191
Carpet Bowls	Philip Seekings	phil.seekings@yahoo.co.uk	843416
Citizens Advice Bureau	Cambridge		0344 848 7979
Community Association Memorial Hall bookings:	Sheila Tilbury-Davis	tilburydavis.sheila@gmail.com	844384
Country Market	Dorothy Doel	dorothy@woodlandsroad.plus.com	843946
Cricket Club	Peter Ede	peter.ede@ntlworld.com	01223 510662
Football Club	Chris Gethins	Chris.Gethins@z-tech.co.uk	07980 383303
Free Church	The Administrator	administrator@shelfordfreechurch.org.uk	842181
Friends of Shelford Library	Daphne Sulston	dsulston@googlemail.com	842248
Granta Medical Practices		capccg.Covid19.gmp@nhs.net	0300 234 5555
Great Shelford Friendship Club	Cheryl Mynott	cherylmynott@gmail.com	845435
Great Shelford Online	David Martin	www.greatshelfordonline davidm1961@gmail.com	845995
Mobile Warden Scheme	Claire Smith (Warden)	saurus1960@gmail.com	07811 676991
	Jenny David (Chair)	jennykmf@yahoo.co.uk	845367
Parish Church Bell-ringers	Ann Seaman	juliet.a.seaman@outlook.com	504682
Parish Church Community Room	Mary Lester	lestermh_uk@yahoo.co.uk	842411
Parish Church Friends	Bob Doel	bobdoel@woodlandsroad.plus.com	843946
Parish Church Sunday Club	Gillian Pett	gillian.pett29@gmail.com	843278
Parish Churchwardens	Simon White	churchwarden@stmarygreatshelford.org	07984 451305
	Joanne Staines	churchwarden@stmarygreatshelford.org	07790 415732
Parochial Charities	Mary Lester (Clerk to the Trustees)	lestermh_uk@yahoo.co.uk	842411
Police	Non-emergency number		101
Rainbow Pre-School	Allison Tomlin		07985 216603
Royal British Legion	Mark Chennells	mdchennells@btinternet.com	891817
Rugby Club	Secretary	secretary@shelfordrugby.co.uk	843357
Sawston Sports Centre	Sawston Village College	info@sawstonsports.com	712555
Beavers, Cubs and Scouts		contact@sandsscouts.org.uk	
Shelford & Stapleford Strikers	Douglas White	douglas.white2@ntlworld.com	561753
Shelford Primary School	Chris Grey (Headteacher)	office@shelford.cambs.sch.uk	843107
Shelford Spokes Cycling Club	Brian Connellan	brian.connellan@eastyoke.com	845382
Shelford Support Group (transport to hospital, etc.)	General enquiries: Gillian Northmore	shelfordsupport@googlemail.com	504542
	John Dibnah 842054	Carol Bard	668157
	Rosie Cranmer 513572	Marjorie Smith	564922
Stapleford Choral Society	Adam Pounds	adampounds54@btinternet.com	07804 308042
Tennis Club	Sarah Richards	secretary@gstc.org.uk	
The Arts Society South Cambs	Frances Clifford	frances.clifford@ntlworld.com	842551
Twinning Association	Penny Pearl	penny.pearl@btinternet.com	842483
U3A (Sawston Branch)	Derek Cupit		871527
WI	Vanda Butler (Secretary)	vanda.butler@googlemail.com	561053
Youth Initiative	Zac Britton	zac.britton@ssyi.club	07599 024210

Shelford

# FUN RUN



11th  
SEPT  
2022

# 5K

REGISTER IN  
ADVANCE!

[SHELFORDFUNRUN.CO.UK](https://SHELFORDFUNRUN.CO.UK)

Raising funds for #ShelfordWheelscape

  
BIDWELLS

 WRENBRIDGE  
 WRENBRIDGE  
SPORT

  
Pill Sorted  
Personal Pharmacy

 angli-EAR  
Hearing & Tinnitus Solutions

 LEVEL UP.

 3rd

  
GYMBOX'S  
HEALTH & FITNESS  
CENTRE  
 DAY

Printed by E&E Plumridge Ltd, Linton