

# Great Shelford VILLAGE NEWS

EST 1999

JUNE 2022

PRICE: 40p

*Jubilee events past and present*



Almshouse development progress

Photo EN Suiter & Sons Ltd

*Open Gardens*

*The History Walk returns*

| <b>CONTENTS</b>                       |    |                                        |    |
|---------------------------------------|----|----------------------------------------|----|
| Parish Council Minutes                | 1  | 2G3S                                   | 32 |
| Granta Travel Clinic                  | 3  | Parochial Charities News               | 35 |
| Planning                              | 5  | Illyria – The Pirates of Penzance      | 36 |
| Parish Council News                   | 6  | Duxford Workshop, Taster Morning       | 37 |
| Anthony Browne                        | 9  | Sawston Gardens                        | 39 |
| Parish Church                         | 11 | Ickleton and Ashdon Gardens            | 40 |
| Jubilee Art Exhibition and Sale       | 13 | Shelford Feast                         | 42 |
| Library Update                        | 14 | WI and Cambridge Flower Club           | 43 |
| Free Church                           | 16 | Hospital Volunteers                    | 45 |
| Job Opportunity                       | 17 | Open Arms in Shelfords/Stapleford      | 47 |
| July Issue of the <i>Village News</i> | 17 | Stapleford Granary                     | 48 |
| History Walk                          | 18 | Stapleford Choral                      | 50 |
| School News                           | 21 | Cricket Club                           | 50 |
| Bike Sale                             | 22 | Tennis Club                            | 51 |
| Our Coronation Programme in 1953      | 24 | Carpet Bowls                           | 51 |
| Coronation Menus                      | 25 | From the Cam to the Channel            | 53 |
| A Right Royal Occasion – 1834         | 26 | What’s On                              | 55 |
| Country market                        | 27 | How to Contact the <i>Village News</i> | 56 |
| Diary, Bins, Post Boxes, Library      | 28 | Rainfall                               | 56 |
| Neighbourhood Plan                    | 29 | Local Organisations                    |    |
| Stapleford Village Weekend            | 30 | Great Shelford Jubilee Celebrations    |    |

| GREAT SHELFORD PARISH COUNCIL                                                                |             |                                         |                              |                  |                              |                             |                |  |
|----------------------------------------------------------------------------------------------|-------------|-----------------------------------------|------------------------------|------------------|------------------------------|-----------------------------|----------------|--|
| CHAIR                                                                                        |             | Malcolm Watson                          |                              | DEPUTY CHAIRS    |                              | Gregory Price, John Stanton |                |  |
| CHAIRS OF SUB-COMMITTEES                                                                     |             |                                         |                              |                  |                              |                             |                |  |
| Planning                                                                                     |             |                                         | Barbara Kettel               |                  | Highways                     |                             | Barrie Ashurst |  |
| Pavilion & Recreation                                                                        |             |                                         | Malcolm Watson               |                  | Cemetery & Allotments        |                             | Gregory Price  |  |
| MEMBERS                                                                                      |             |                                         |                              |                  |                              |                             |                |  |
| Paula Arnold                                                                                 |             | Peter Brown                             |                              | Roberto Ghersemi |                              | Ifthinan Shareef            |                |  |
| Pete Basset                                                                                  |             | Lyn Disley                              |                              | Angela Niblett   |                              | Ben Shelton                 |                |  |
| CLERK                                                                                        | Libby White | clerk@greatshelfordparishcouncil.gov.uk |                              |                  |                              | 01223 616622                |                |  |
| To email Parish Councillors, use: <i>firstname.surname@greatshelfordparishcouncil.gov.uk</i> |             |                                         |                              |                  |                              |                             |                |  |
| DISTRICT COUNCILLORS                                                                         |             |                                         | Peter Fane    07802 256861   |                  | William Jackson-Wood         |                             |                |  |
| COUNTY COUNCILLORS                                                                           |             |                                         | Brian Milnes    07971 886113 |                  | Maria King      07764 609061 |                             |                |  |

**GREAT SHELFORD PARISH COUNCIL**  
*greatshelfordparishcouncil.gov.uk*  
**SUMMARY FROM THE UNADOPTED MINUTES OF THE  
MEETING ON 20 April 2022**

**PUBLIC PARTICIPATION SESSION**

One member of the public was present. This resident noted that there had been an update on East West Rail (EWR) which had mentioned for the first time the introduction of six railway tracks.

It was suggested that a letter should be sent to National Rail and the Minister responsible for this, reiterating Great Shelford's position on the green belt, stating that any grade separation must go underground to solve the level crossing problems and asking where they see the six tracks going.

It was also requested that a letter should be sent to the new Chief Executive Officer (CEO) of East West Rail highlighting how important the project is to the village. The CEO has stated how important community engagement is and the Parish Council would like to invite her to attend a Parish Council meeting.

It should also be mentioned that in the past the Parish Council has received assurances that there will not be four tracks through the village as these would damage a scheduled monument and have a detrimental effect on Nine Wells Nature Reserve.

**REPORTS FROM COUNTY AND DISTRICT COUNCIL MEMBERS**

It was noted that no report had been received from the County Councillors. County Cllr Milnes stated that there was not much to report and that all scheduled roadworks are available on *uk.one.network/*.

District Cllr Sample noted that Zero Carbon grants had reopened. Cllr Fane suggested that the having declared a climate emergency, the Parish Council should seriously look at trying to get some funding for this.

It was also noted that the Year End accounts for 2018/19 had now been signed off by their external auditors. Accounts for 2019/20 are due to be signed off within 20 weeks.

**REPORTS FROM COMMITTEES AND WORKING GROUPS**

Though work continues on the Wheelscape project, there have been some concerns raised by the Scouting and Guiding Associations. Discussions are ongoing before the project can be moved on any further.

The report on the Cambridge Biomedical Campus (CBC) prepared by Annabel Sykes was noted by members, highlighting the effect CBC could have on the village. It was agreed that it is still too early to seek comments from residents

as there is still too much unknown. It is not yet known how and when Parish Councils will be asked to comment on the updated transport strategy and plan for the CBC. The representatives of CBC are keen to meet their neighbours and have been asked if they would like a stall at the Feast (with the Feast organisers' permission).

The request from Stapleford Parish Council for a proportional split of funding between the parishes for the Neighbourhood Plan has been deferred for three months.

Following the success of the stands for the Traffic and Transport Infrastructure Working Group at the Feast in 2021, it was agreed to ask the Feast Committee if the Parish Council could have a stall. Council members will suggest ideas for the stall contents to the Clerk and these will be discussed at the May meeting.

## **COUNCIL ADMINISTRATION**

The Grievance Policy and Procedure and Disciplinary Procedures were approved.

The Clerk noted that no information had been received from Cambridge Water though this had been promised for 13 April. Following a chaser email, information had been promised for the meeting, but again nothing was received. The Clerk was asked to phone Cambridge Water and inform them that should the information not be forthcoming, the Council would make a formal request.

It was agreed to adopt the position statement of Great Shelford Parish Council on the green belt with an additional point to be supplied by Cllr Disley.

## **HIGHWAYS AND TRANSPORT**

Cambridgeshire County Council has asked parish councils to take part in 'No Mow May' where they look after the County Council's verges on their behalf. It was agreed that Great Shelford would take part in this, but that the metre nearest the road would be cut for visibility and safety reasons.

## **COMMUNITY MATTERS**

The Clerk updated members on the event being organised to celebrate the Queen's Platinum Jubilee. It was agreed to incur the costs to close half of Woollards Lane for a play street (£725+VAT) and purchase of commemorative coins for all the primary school children at Shelford Primary School (£785.40 +VAT).

The work being undertaken by OASISS (Open Arms in Shelfords/Stapleford) to help Ukrainian refugees was considered and it was agreed to support the group by providing banking support as necessary.

## FINANCE

It was agreed to move £75,000 from the Earmarked Reserves for land purchase and £20,000 from public toilets to the General Reserves to bring the General Reserves back in line with proper practice figures.

Full copies of the minutes of the Parish Council and Planning meetings can be viewed on the Parish Council website [greatshelfordparishcouncil.gov.uk/minutes](http://greatshelfordparishcouncil.gov.uk/minutes)

### PARISH COUNCIL MEETINGS IN JUNE

|                       |         |        |                 |
|-----------------------|---------|--------|-----------------|
| Planning Committee    | 6 June  | 7.30pm | Sports Pavilion |
| Parish Council        | 15 June | 7.00pm | Sports Pavilion |
| Planning Committee    | 20 June | 7.30pm | Sports Pavilion |
| Cemetery & Allotments | 22 June | 7.00pm | Sports Pavilion |

Meetings may be adjourned for up to 10 minutes when the public can ask questions and put forward points of view related to business on the agenda or for items they wish to raise for future agendas. No decisions can be made in this section of the meeting.

## THE GRANTA TRAVEL CLINIC

If you are planning your summer holidays and need some travel health advice, look no further! In our dedicated Travel Clinics, our travel nurses will talk to you about where you are going and what may be required. This could include travel vaccinations and other travel health risks that you might like to consider, such as malaria prevention. We will ensure you get your injections at the right time for your trip and we will also assess the impact of any existing medical conditions on your vaccination requirements.

The first step is to complete one of our Travel Risk Assessment forms so we can assess your risk. Please note that each traveller must complete a form.

Once you have completed and returned the form, we'll contact you within seven to ten days with further instructions. At your appointment, the recommended vaccines or medications will be given and follow up injections planned.

On our website you will find our travel vaccinations price list. We also have a range of travel essentials for sale such as first aid kits, travel adaptors, sun screen, mosquito repellent and chlorine dioxide tablets.

For further information and to complete a Travel Risk Assessment form visit our website [www.grantamedicalpractice.co.uk/granta-travel-clinic/](http://www.grantamedicalpractice.co.uk/granta-travel-clinic/) If you do not have access to the internet, please feel free to ring our reception team on 0300 234 5555 and they will be happy to help you.

*Sandra East, Head of Patient Services. Email: [sandra.east@nhs.net](mailto:sandra.east@nhs.net)*

# JO ALEXANDER

Reclaimed Teak, Concrete &  
All Weather Wicker furniture for your garden

01954 267857  
[www.joalexander.co.uk](http://www.joalexander.co.uk)



## Chiropodist David Levy MSSCh MBChA

Home visiting practice

Saturday morning clinic  
held at  
Billson Opticians,  
Sawston

Mobile: 07966 136972  
Home: 01223 834634

## green|weigh

minimal wasteshop

*Eco-friendly, ethically  
sourced food refills &  
other products*

**60 High Street  
Sawston CB22 3BG**

Email:  
[hello@greenweighshop.co.uk](mailto:hello@greenweighshop.co.uk)

Facebook/Instagram:  
[@greenweighshop](https://www.facebook.com/greenweighshop)

Website:  
[www.greenweighshop.co.uk](http://www.greenweighshop.co.uk)

Tues-Fri: 9am to 5pm  
Sat: 9am to 4pm

## sawstoncarpet andflooringltd

Carpets - Sisal - Vinyl  
Wood - Laminate  
Karndean - Amtico - Moduleo

**Mon-Fri: 9am-5pm  
Sat: 9am-4pm**

Unit 34, Eastern Counties Leather Site,  
London Road, Pampisford CB22 3EE  
Tel 01223 837005

[sawstoncarpetsandflooring@gmail.com](mailto:sawstoncarpetsandflooring@gmail.com)  
[www.sawstoncarpetsandflooring.com](http://www.sawstoncarpetsandflooring.com)

## NICHOLAS CLIFFE & CO CHARTERED ACCOUNTANTS

*Business Advisers for South Cambridgeshire*

**Accounts, Audit, VAT & Tax Advice**

**WE WANT TO HELP YOUR BUSINESS GROW**

**Realistic Fees**

**We offer a free initial meeting and business 'health check'.**

Mill House, Mill Court, Great Shelford

Tel: 01223 471576

[www.nicholas-cliffe.co.uk](http://www.nicholas-cliffe.co.uk)

## PLANNING APPLICATIONS

### PARISH COUNCIL COMMENTS (MARCH)

|                                                                                                                   |                |                                                                                          |
|-------------------------------------------------------------------------------------------------------------------|----------------|------------------------------------------------------------------------------------------|
| 22/00931<br>22/00932/LBC                                                                                          | 26 Maris Green | Demolition and replacement of outbuilding in the curtilage of a Grade 2 listed building. |
| Application supported but an ecological survey should be carried out and the tree should be retained or replaced. |                |                                                                                          |

|                        |                                |                               |
|------------------------|--------------------------------|-------------------------------|
| 22/00940/HFUL          | Beech Cottage<br>28 High Green | Single storey side extension. |
| Application supported. |                                |                               |

|                                                                                                                                             |                 |                                                                                                                                                                                                              |
|---------------------------------------------------------------------------------------------------------------------------------------------|-----------------|--------------------------------------------------------------------------------------------------------------------------------------------------------------------------------------------------------------|
| 22/00982/HFUL                                                                                                                               | 4 Spinney Drive | Demolition of single storey side extension and conservatory.<br>Construction of two storey side extension with Juliet balconies and single storey front extension with car port and detached bin/bike store. |
| No stance recommended. A heritage statement should be provided and there was concern about the effect of the bin store on a protected tree. |                 |                                                                                                                                                                                                              |

|                        |                   |                                                                                                           |
|------------------------|-------------------|-----------------------------------------------------------------------------------------------------------|
| 22/01371/FUL           | 26 Cambridge Road | Demolition of single storey dwelling and construction of a three storey dwelling with off-street parking. |
| Application supported. |                   |                                                                                                           |

## PLANNING DECISIONS BY DISTRICT COUNCIL

### Approved

22/04993 /HFUL 225 Hinton Way (house extensions)

22/00525/HFUL 2 Walnut Drive

### Refused

22/00359/HFUL 225 Hinton Way (car port, bin/cycle store)

22/04983/FUL 36 Leeway Avenue

22/00501/HFUL 24 Woollards Lane

## PARISH COUNCIL NEWS

With summer in full swing we hope you are able to enjoy the fresh air and catch some sunshine and perhaps manage to pop along to the picnic in the park for the Jubilee celebrations.

### **New Member of Staff**

I would like to open by welcoming Jenny Eldridge as our new Clerical Assistant. She will be working alongside Libby to help look after some of the services we provide including the allotments, cemetery and pavilion.

### **Climate Emergency**

You may have seen that Great Shelford Parish Council recently declared a Climate Emergency. We are looking to create an action plan which will help steer us and our village to make a difference to our carbon footprint. We have set up a Working Group and would welcome any residents who would like to help with this to join us in creating a workable plan. We have several working groups at present with residents taking part and have found them to be extremely valuable and they work very well for our needs.

### **Neighbourhood Plan**

You will have seen that the steering group for the Neighbourhood Plan is working hard to get this project back up and running. Currently there is a consultation out seeking residents' views which will help the group focus on what is important to the community. At the time of writing, responses from Shelford residents are a little low. So if you could spare a few moments please visit <https://www.greatshelfordparishcouncil.gov.uk/sgsnplan/sgsnplan-latest-news/> where you will find a QR code to take you to the survey. If anyone needs a paper copy of the questionnaire, please contact [sgsnplan@gmail.com](mailto:sgsnplan@gmail.com). See also p29 for more details.

### **Transport**

The Combined Authority has launched a public consultation to help them develop a plan for better transport in Cambridgeshire, this can be found via the link [www.yourltcp.co.uk](http://www.yourltcp.co.uk) and is open until 4 August. The link also details where there will be drop in consultations and places where hard copies can be picked up.

### **Overgrown Hedges**

As it is growing season we are conscious that vegetation bordering footpaths, roads and signage may cause hazards to those using them. Please can we ask that you cast a critical eye at your boundaries from that of a road user and make sure that the hedges are back in line with the boundary of your property, that there are no branches obscuring road signs, traffic lights, etc.



## Queen's Platinum Jubilee – Sunday 5 June 2022

Don't forget to visit our website for information on the picnic in the park  
[https://www.greatshelfordparishcouncil.gov.uk/council\\_events/platinum-jubilee-event/](https://www.greatshelfordparishcouncil.gov.uk/council_events/platinum-jubilee-event/).



### A Little Reminder About Dogs on the Recreation Ground

The new sign with the main do's and don'ts for the Recreation Ground is now installed. Please do not forget that dogs will not be permitted to the left of the footpath (as you enter the Rec from the car park). **This exclusion includes all the area from behind the emergency gate, behind the Scout Hut, under the trees and the Playscape, Scout Hut, etc.**

Please do keep your dogs under close control at all times.

Don't forget to get in touch with us should you have any relevant concerns. Our telephone number is 01223 616622 and Libby will be available to help during office hours (please leave a message outside of these times or email). Councillors have emails too, which can be found on the website. If you do email a Councillor we ask that you copy in Libby too.

*Malcolm Watson, Chairman*

### NOTE

The *Great Shelford Village News* is published by the Editorial Committee, whose members are delighted to receive the many regular and occasional contributions that make it all possible. The Committee accepts such contributions in good faith, but cannot take responsibility for the accuracy of information contained therein. The views expressed are those of the contributors and do not necessarily reflect those of the Editorial Committee. The Committee, of necessity, reserves the right to amend or reject items, for a variety of reasons. In these cases (unless the changes are minor), every reasonable effort will be made to contact the contributor to obtain agreement.

*Editorial Committee*

## Rebecca Orde

Want to make changes to your home but don't know where to start?

We project manage property renovations & refurbishments. We can also help you with an "eco makeover" or future-proofing your home.

- ✓ Single point of contact
- ✓ Tried & tested trades & professionals
- ✓ End-to-end service
- ✓ Taking away the stress

Call us for a helpful chat:  
**01223 782125**

Or visit our website at:  
[www.rebeccaorde.com](http://www.rebeccaorde.com)

Email:  
[info@rebeccaorde.com](mailto:info@rebeccaorde.com)

## Shelford Physiotherapy

Are you in pain?

Call **01223 844 488**

**Stephanie Hatter BSc (Hons)**

A Chartered Physiotherapist  
registered with the HCPC.  
Recognised provider for  
BUPA, AXA PPP, Aviva, etc.



Great  
Value

## KASH STORES

Local  
Services

**A great deal more from your local store!**

General Groceries • Fresh Produce • Confectionery  
Instore Bakery • Off Licence • Photocopying  
Newspapers • Magazines • Stationery • Lottery  
Dry Cleaning • Shoe Repairs • Passport Photos

**Full Post Office counter facilities**

33-35 Hinton Way, Great Shelford

Tel: 01223 843307

Shop opening times:

Mon-Sat:

7.00am-7.30pm

Sunday:

7.00am-2.00pm

POST  
OFFICE

Post Office opening:

Mon-Fri:

8.30am-6.00pm

Sat:

8.30am-2.00pm

## TAYABALI & WHITE

ACCOUNTANCY | TAX | CONSULTING

5 High Green, Great Shelford, Cambridge CB22 5EG

Telephone: **01223 843324**

Email: [enquiries@tayabali-white.co.uk](mailto:enquiries@tayabali-white.co.uk)

## Crafty Sue

Handmade  
Cushions and  
Gifts  
Haberdashery  
Patchwork  
and Craft  
Supplies



Unit 34, Eastern Counties  
Leather Site, London  
Road, Pampisford,  
Cambridge CB22 5EE



07976 745839

[craftysuesue@hotmail.com](mailto:craftysuesue@hotmail.com)

**ANTHONY BROWNE**

Now the weather is improving, I am looking forward to getting out and about in the villages of South Cambridgeshire more. This will be my first summer as MP without Covid restrictions.

I was very interested to hear that Great Shelford took part in 'No Mow May'.

I am a keen environmentalist and so I am very supportive of any efforts to

improve our environment. South Cambridgeshire has fewer natural spaces than the national average, so I applaud any attempts to allow nature to bloom (even if it is only temporary).

I expect everybody in Great Shelford is looking forward to the Jubilee. I am very disappointed that I will not be able to make the planned picnic in the park. The Platinum Jubilee in June is a tremendous reminder of Her Majesty's tireless service. The Queen is an inspiration for all of us in public service. Events like this serve as an opportunity to reflect upon the last seventy years.

The Queen has served through a tumultuous period of history. She has served as a constant in a time of rapid change. This has certainly been the case in South Cambridgeshire. Even in the Queen's long reign, the last three years have seen unprecedented events with the Covid pandemic followed by the Russian invasion of Ukraine.

Since 1952, South Cambridgeshire has transformed into one of the foremost areas for life science in Europe. That means that when Covid struck, South Cambridgeshire was invaluable in the fight against Covid.

Furthermore, since February the people of South Cambridgeshire have been unfailingly generous to refugees fleeing Ukraine. From the beginning of the crisis, I have reiterated to the Prime Minister and to colleagues in Government that, as a nation, we must do our utmost to help the people of Ukraine. The people of South Cambridgeshire have certainly done that.

The Department for Levelling Up, Housing and Communities' statistics show that 435 visas have been issued for Homes for Ukraine. This is the seventh highest figure for any area in England and the areas that have been issued more are far more heavily populated. I know that this has not been a straightforward process and I would encourage anyone facing difficulties with this scheme to get in contact with my office.

*Anthony Browne MP*



Scan here to register your interest!

At the Clay Farm Centre, Cambridge

## Elite Tuition Cambridge

English & Maths  
Primary & Secondary  
SATs | 11plus | GCSE

Looking for that something extra for your child's education? Look no further. With our engaging, hands-on and interactive tuition, there's guaranteed progression for children at every age.

First class £19.99

Contact us on  
info@elitetuition.uk  
07712 467 322  
elitetuition.uk

## SOLUTIONS

### Ladies' and Gents' Hair Salon

*Air-conditioned*  
44 Woollards Lane  
Great Shelford  
CB22 5LZ

Closed all day Wednesday  
& Sunday

 **01223 843844**



**Mrs Rosemary Rigge**  
Grad Dip Phys MCSP Reg. HCPC  
Chartered Physiotherapist

TREATMENT ROOMS:  
26 Mingle Lane, Stapleford,  
Cambridge CB22 5SY

or HOME VISITS

Tel: 01223 844091  
Mobile: 07958 708728  
Reg. BUPA, AXA, etc.

## DUXFORD BUILDING & LANDSCAPE SERVICES

All work considered from:

- Hard Landscaping
- Brickwork
- Structural Alterations
- Carpentry
- All types of Building Works from Extensions to Conversions



**D A Rayment**

Home: 01223 837645


Mobile: 07958 774360

Email: [duxfordbuilding@btinternet.com](mailto:duxfordbuilding@btinternet.com)


Web: [www.duxfordbuildingandlandscapes.com](http://www.duxfordbuildingandlandscapes.com)



*Award winning free house & restaurant  
in the heart of the village.*

 01223 503 402

@ [hello@threehorseshoes-pub.com](mailto:hello@threehorseshoes-pub.com)

 [www.threehorseshoes-pub.com](http://www.threehorseshoes-pub.com)

## NB HORTICULTURE & CAMBRIDGE HEDGES

All types of garden work  
& landscaping

Hedge & Shrub Supplier

[www.cambridgehedges.co.uk](http://www.cambridgehedges.co.uk)

Mr N Barber BSc RHS Cert

Consultant Member of the Gardeners Guild

109 Cambridge Road  
Great Shelford, CB22 5JJ

**07789 564042**

**01223 977306**

## GREAT SHELFORD PARISH CHURCH

*[www.stmarysgreatshelford.org](http://www.stmarysgreatshelford.org)*

We invite you to visit your historic parish church and enjoy the sacred space.

### News from St Mary's Church

It is a delight for St Mary's Church to be sharing together with Great Shelford Free Church and the village community in a service of celebration for the Queen's Platinum Jubilee on Sunday 5 June. A joint choir will be singing an anthem which was composed for this special occasion called, 'In our service'. The choir at St Mary's are hoping that there will be additional voices from the Free Church and the village, who will join them in learning and singing this joyful hymn. See below for the dates and times of rehearsals and let Dianne Fraser know so that she can make sure there is enough music.

I am hoping that this will be an occasion where people with different views and traditions will celebrate the 70 year long service of Her Majesty the Queen and be inspired themselves to find new ways to serve the common good.

Rev Dr Julie Norris, Associate Priest





**Great Shelford Free Church  
and St Mary's Great Shelford  
combine with the village to  
celebrate  
the Queen's Platinum Jubilee  
in a shared service of Holy Communion  
5<sup>th</sup> June 2022 at 10am  
at St Mary's**

**The choir will be singing an anthem composed for the occasion. Anyone who would like to join in with this is welcome to the rehearsals at 7pm on Friday 27 May and 3 June at St Mary's. Let Dianne ([diannefraser@outlook.com](mailto:diannefraser@outlook.com)) know if you can come so that music can be bought.**

## June Services

You will receive a warm welcome at any of the following services. These are all going to be held in church except for the Zoom services.

### Sunday 5 June (Pentecost and Queen's Platinum Jubilee)

|        |                                                          |
|--------|----------------------------------------------------------|
| 8am    | Holy Communion (BCP 1662) - Revd Julie Norris            |
| 10am   | Shared Celebration of the Queen's Jubilee with Communion |
| 6.30pm | Zoom service                                             |

### Sunday 12 June (Trinity)

|        |                                               |
|--------|-----------------------------------------------|
| 8am    | Holy Communion (BCP 1662) - Revd Julie Norris |
| 10am   | Parish Communion - Revd Julie Norris          |
| 6.30pm | Zoom service                                  |

### Sunday 19 June (First after Trinity)

|        |                                                                |
|--------|----------------------------------------------------------------|
| 8am    | Holy Communion (BCP 1662) - Revd Julie Norris and Rosey Feuell |
| 10am   | Parish Communion - Revd Julie Norris and Maureen Dobson        |
| 6.30pm | Zoom service                                                   |

### Sunday 26 June (Second after Trinity)

|        |                                               |
|--------|-----------------------------------------------|
| 8am    | Holy Communion (BCP 1662) - Revd Julie Norris |
| 10am   | Parish Communion - Revd Julie Norris          |
| 6.30pm | Zoom service                                  |

**Holy Communion (BCP 1662)** is a spoken service in traditional language with a short sermon. **Parish Communion** is our main service with music, sermon, children's activities and Holy Communion. Our **Zoom Service** is a time of reflection following a variety of different styles; to request the link email [revjulienorris@gmail.com](mailto:revjulienorris@gmail.com).

Children are especially welcome at **Parish Communion**. On the first Sunday of every month there is the **St Mary's Sunday Club** with a story and activities for children of all ages. On other Sundays, there is an activity for children during the service. Contact Gillian Pett [gillian.pett29@gmail.com](mailto:gillian.pett29@gmail.com) for details.

## From the Registers:

|                  |                               |
|------------------|-------------------------------|
| <b>Funerals:</b> | James Watson 22 March 2022    |
|                  | Michael Wells 23 March 2022   |
|                  | Jane McKewan 28 March 2022    |
|                  | Eileen Benroy 16 May 2022     |
|                  | Elizabeth Wareham 24 May 2022 |

**Food Box:** There is a constant flow of tins in and out of the box on the church porch. This is a friendship box. Those who give and those who receive wish each other well. We all benefit from this friendship.

**Pilgrim Group:** This will meet again on 20 June at 10am. We will be using a series called, 'Mapping Mark.' We will be meeting in St Mary's Church. Please come along.

**Vacancy:** St Mary's is still in vacancy. The PCC has drawn up the Parish Profile and the process is moving forward towards the appointment of a new incumbent.

**For more information about Great Shelford Parish Church**  
visit our website: [www.stmarysgreatshelford.org](http://www.stmarysgreatshelford.org)

Associate Priest: Revd Dr Julie Norris  
01223 871807 or email [Revjulienorris@gmail.com](mailto:Revjulienorris@gmail.com)

Parish Administrator: Katharin Page 07710 518220  
or email [pagekatharin@gmail.com](mailto:pagekatharin@gmail.com)

St Mary's Great Shelford is a Registered Charity, No. 245456

**JUBILEE  
ART AND PHOTOGRAPHIC EXHIBITION  
AND SALE**

**June 7 and 8 from 1pm to 7pm**

**GREAT SHELFORD PARISH CHURCH**

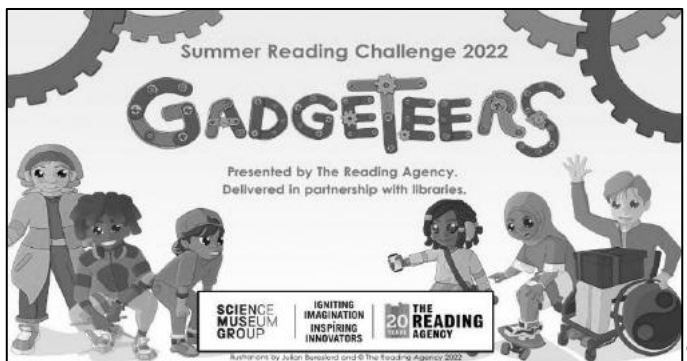
Some of Pat Bateman's watercolours are for sale, together with pictures by some accomplished local artists.

There will also be photographs taken by local people on sale.

All the exhibits have been donated and the money will go to Ukraine and the Parish Church.

## LIBRARY UPDATE

**The Summer Reading Challenge will soon be here**



Get ready for the Gadgeteers Summer Reading Challenge, arriving in the library this summer. Join the Gadgeteers to discover the amazing science and technology in the world around you.

Read amazing books, collect awesome *scratch & sniff* stickers and join in with our marvellous science themed activities. Complete the Challenge and claim your own special Gadgeteers medal and certificate! Sign up for free at Great Shelford Library from Saturday 9 July.

**Other Events at the Library** (please pre-book):

1. **Children's Jubilee Craft Event: Wednesday 1 June 2–3.30pm.** Suitable for aged three and over, £2 per child.
2. **Pop in and Chat: Wednesday 8 June 2–3.30pm:** our new mutual support group for parents/carers of children with additional needs (eg SEND). Note: the time for these meetings may change, to avoid a clash with school pick up times, so please check the time when booking.
3. **Engage Talk: Wednesday 22 June 2–3.30pm.** Our free Engage talk this month will be about the Business and Intellectual Property Centre, a superb local and national resource (particularly if you have a new business idea). A donation of £2 is appreciated if you stay for a drink after the talk.

**Friday 3 June – the library will close for the Queen's Platinum Jubilee.**

**Contact details:** Telephone: 0345 045 5225. Web [www.cambridgeshire.gov.uk](http://www.cambridgeshire.gov.uk)  
Email: [Cambourne.referral@cambridgeshire.gov.uk](mailto:Cambourne.referral@cambridgeshire.gov.uk)





All aspects of  
Tree surgery &  
Woodland management

**Free estimates**

- Crown thinning and lifting
- Sectional dismantles
- Crown reductions
- Dead wooding
- Hedge trimming
- Land & garden clearance
- Stump grinding
- Felling

**Fully Qualified  
& Insured**

**07743 406 569 | 01763 208 361** City & Guilds NPTC  
**www.shelfordtreeservice.co.uk**

## **Rothwell's Carpet Cleaning**

### **Carpet Cleaning & Stone Floor, Upholstery, Rugs**

*A few points that make us stand out:*

Rothwell's has been in business since 1993.

We're an honest local family firm.

Our large truck-mounted machines mean more cleaning & drying power for the best results possible.

Members of both the NCCA and TACCA.

We will move the furniture.  
100% satisfaction or it's FREE.

Call Oliver and Max Campbell  
for expert help today.

**01223 832 928**

**www.Rothwells.biz**

Introducing...

# ACElectrics

## **Your Local Electrician**

- Lighting and Power
- Electric Vehicle Chargers
- New Consumer Units
- Testing and Inspection
- Minor Works
- Fault Finding
- Outdoor Lighting
- Extensions

A friendly, tidy and reliable electrician ready to serve the people of Great Shelford. Feel free to get in touch with any of your electrical requirements.

**CALL ADAM  
01223 89 48 48**

Email:  
**adam@acelectrics.live**

Web:  
**acelectrics.live**



# **Great Shelford Parochial Charities**

Supporting people in our village

## **Grants**

We welcome applications for small grants to support local people and good causes

## **Housing**

We provide 32 almshouse homes for Great Shelford people and are building 21 more

## **Allotments**

Available to rent for a nominal annual fee - or just come and enjoy our community garden

## **Donations**

Are most welcome via our website

Subscribe to our newsletter / mailing list

[www.gspc.org.uk](http://www.gspc.org.uk)

[enquiries@gspc.org.uk](mailto:enquiries@gspc.org.uk)

01223 842411



[fb.com/greatshelfordvillagecharities/](https://fb.com/greatshelfordvillagecharities/)



## **GOD SAVE OUR GRACIOUS QUEEN!**

Amid a seemingly interminable round of doom laden news bulletins, the forthcoming Platinum Jubilee is a welcome relief. Not everyone is a fan of the royal family, but few will turn down the offer of an extra day's holiday; few too can fail to be impressed by the qualities displayed by the Queen. As a young woman, she addressed the nation, saying, 'I declare before you all that my whole life whether it be long or short shall be devoted to your service...'

The bedrock of this service is rooted in her Christian faith. Rather than paraphrase her words, here is a selection from her messages to her people over this century, which speak for themselves:

'To many of us our beliefs are of fundamental importance. For me the teachings of Christ and my own personal accountability before God provide a framework in which I try to lead my life. I, like so many of you, have drawn great comfort in difficult times from Christ's words and example.'

'For me, the life of Jesus Christ, the Prince of Peace...is an inspiration and an anchor in my life. A role model of reconciliation and forgiveness, he stretched out his hands in love, acceptance and healing. Christ's example has taught me to seek to respect and value all people, of whatever faith or none.'

'Billions of people now follow Christ's teaching and find in him the guiding light for their lives. I am one of them because Christ's example helps me see the value of doing small things with great love, whoever does them and whatever they themselves believe.'

So as we prepare to acknowledge the long reign under which many of us have lived our whole lives, let us be grateful too for the Servant King whose example our Servant Queen follows. The congregation of the Free Church will be joining together with those at St. Mary's for a communion service at 10am on Sunday 5 June, where we will give thanks together. Even if you are not normally a churchgoer, why not make an exception for this special day? As we celebrate with family, friends and villagers we have never more needed the accountability, reconciliation, acceptance and healing mentioned in those speech extracts above. There will be no more fitting act of celebration than to keep doing small things with great love.

*Liz Jenkin, Elder, Great Shelford Free Church*

### WHAT'S ON IN JUNE

|                       |                                                                                               |
|-----------------------|-----------------------------------------------------------------------------------------------|
| Sunday Service        | Each week 10.30am.                                                                            |
| Café Church, 19 June  | Informal church, sitting around tables for discussion with coffee and croissants.             |
| Mondays 10am–12noon   | Community Café – drop in to the church for tea and cake. Tables available inside and outside. |
| Wednesdays 10–11.30am | Little Steps – a toddler group for parents and carers with children up to three years old.    |
| Wednesdays 1.30–3pm   | Tiny Toes – a support group for parents with new babies under a year old.                     |

### JOB OPPORTUNITY

A part-time church administrator is required by Great Shelford Free Church [shelfordfreechurch.org.uk](http://shelfordfreechurch.org.uk) to support the church in practical ways, to facilitate effective ministry within the church and in the local community.

We are looking for a committed Christian. He or she will have great organisational and communication skills, both interpersonal and via social media and other IT applications and packages.

21 hours per week. Days and times negotiable. Salary range £19.1k to £21.3k FTE, paid on *pro rata* basis.

We are welcoming applications straightaway and will interview on a rolling basis.

Contact Jillian Hardwick at [secretary@shelfordfreechurch.org.uk](mailto:secretary@shelfordfreechurch.org.uk) for more information.

### JULY ISSUE OF THE *VILLAGE NEWS*

The deadline for copy for the next issue of the *Great Shelford Village News* is Friday 10 June and it should be available on Friday 24 June, with subscribed copies delivered shortly thereafter.

## HISTORY WALK

After a long break, I have decided to restart the History Walks. The format will be a little different this year. Although Covid is not the problem it was in 2020, it hasn't gone away yet. So, to make sure everyone's safe, there will be a maximum head count of 20 people per walk. I will be asking you to ring/email and book a place on the walk. Strictly no turning up on the night, without booking please. I will also be asking for a contribution of £2 per person, which will go towards insurance.

### **The River, the Church and the Mill**

A walk around the heart of the old village.  
on Thursday 23 June at 7pm.



Meet at St Mary's Church. The walk will last up to 1 ½ hours.  
Afterwards, for those of you who wish to join us, we may just stop at the  
Square and Compasses for a drink.

Contact Helen Harwood for details and to book:  
Tel.840393, e-mail [helen\\_harwood\\_uk@yahoo.co.uk](mailto:helen_harwood_uk@yahoo.co.uk)



Thinking of selling or  
letting your property?

Our Great Shelford  
team can help!

2019 ★★★★★ **feefo<sup>co</sup>**  
**Gold Trusted Service Award**

Call: 01223 800860  
or Email: [shelford@rah.co.uk](mailto:shelford@rah.co.uk)

## LAY ELECTRICAL Sales and Repairs

*Washing  
Machines,  
Vacuum  
Cleaners,  
TV, Video,  
etc.*



66 High Street  
Great Shelford  
01223 842488



## TIM PHILLIPS & Co Ltd Accountants

Independent, specialist service for:

**Small Business**

**Self Assessment**

**Personal Taxation**

FREE initial consultation – NO OBLIGATION

**Easy to find us – map on website. FREE PARKING**

**Copley Hill Business Park**

*Off A1307 between Wandlebury and Babraham*

**01223 830044**

[info@TPaccounts.co.uk](mailto:info@TPaccounts.co.uk) [TPaccounts.co.uk](http://TPaccounts.co.uk)

**DAY**CHARTERED  
CERTIFIED  
ACCOUNTANTS

Do you want more control over your business accounts, or want to organise your personal tax situation more effectively?

We are a friendly team of qualified accountants who can help you reach the potential of your business and give you expert professional accounting and tax advice using the latest technology to work for you in achieving your goals.

We can deal with all matters relating to business tax and accounting including online bookkeeping, VAT and PAYE matters.

Private clients can be confident that we will deal efficiently with tax return preparation and all aspects of tax planning.

To arrange an informal chat or a meeting please contact us at:

Quern House, Mill Court, Great Shelford,  
Cambridge, CB22 5LD

T: 01223 506533

E: [hello@day-accountants.com](mailto:hello@day-accountants.com)

W: [www.day-accountants.com](http://www.day-accountants.com)



QUALITY FLOORING SUPPLY,  
INSTALLATION & AFTERCARE

## Specialists in Wood Flooring, Carpets & Vinyl Flooring Solutions

*"We've had a vinyl floor fitted in a loft bedroom. Sam and Nigel were excellent throughout. The whole experience was made very stress free due to their professionalism and the floor looks amazing. I would not hesitate to recommend The Art of Flooring."*

**Juliet Mills, Cambridge**

**01223 755 802**

Please quote Great Shelford Mag

Best of  
**houzz**  
**2020**  
SERVICE

Best of  
**houzz**  
**2020**  
DESIGN

141 Milton Road Cambridge CB4 1XE  
[www.ArtOfFlooring.co.uk](http://www.ArtOfFlooring.co.uk)

## SIMON SPARROW CARPENTER AND JOINER

22 Woollards Lane  
Great Shelford  
Cambridge CB22 5LZ  
Tel: 01223 842380



## D Hatter The Gas Specialist



Carbon Monoxide Kills  
75% of last year's poisonings  
were due to lack of servicing!

D Hatter, specialist in servicing,  
repairs and installation of  
DOMESTIC gas appliances  
including boilers, fires  
and cookers.

.....  
Improve efficiency, save fuel,  
give your central heating  
system a new lease of life,  
have it POWER FLUSHED.

t: 01223 844866  
m: 07747 444 435  
e: [davidhatter1@aol.com](mailto:davidhatter1@aol.com)  
w: [thegasspecialistltd.co.uk](http://thegasspecialistltd.co.uk)



## SHELFORD SCHOOL

The summer term is always a busy time for the school and particularly so this year as we reintroduce the usual summer traditions including Ascension Day service and picnic, sports day and class trips. These events were always the highlight of the summer calendar but were unfortunately very much missed in the last couple of years due to Covid restrictions. It's been wonderful to see the enthusiasm from the school community for the reintroduction of these events.

Before the May half term holiday, Year 5 enjoyed a two night residential trip to Burwell House. The class made the most of the activities on offer including a TV studio experience, clay tile workshop and many exciting games and outdoor adventures. Year 2 will soon be visiting Cadbury's World to learn more about making chocolate, one of the favourite topics taught in that school year! Year 3 will be turning back the clock and experiencing Victorian Day. The children and teaching staff dress up in Victorian clothes and spend a whole day role playing what it would have been like to be at school in that era.

There is much excitement about the reintroduction of swimming lessons in the six weeks prior to the end of the school year. Unfortunately, our pool has been out of action for a couple of years due to Covid restrictions and a broken boiler. A new boiler has been installed and the pool is ready for use. Each class will have two swimming classes per week. Let's hope the weather is kind.

Prior to half term Year 6 and Year 2 sat their statutory assessments (SATS). The school was incredibly proud of how hard the children worked to prepare for these. With a continued strong focus on wellbeing, Years 2 and 6 appreciated visits during the SATS week from our school PAT dogs, Holly and Tog. The pupils have enjoyed getting to know the two dogs over the past two months and they are proving a welcome part of the school's wellbeing provisions.

As many pupils cycle to school, bike safety has always been a priority. We are pleased to offer Bikeability, an approved cycle training programme supported by the Department for Transport. In May it was Year 4's turn to be offered this training. The class explored and learnt a variety of safety skills whilst cycling.

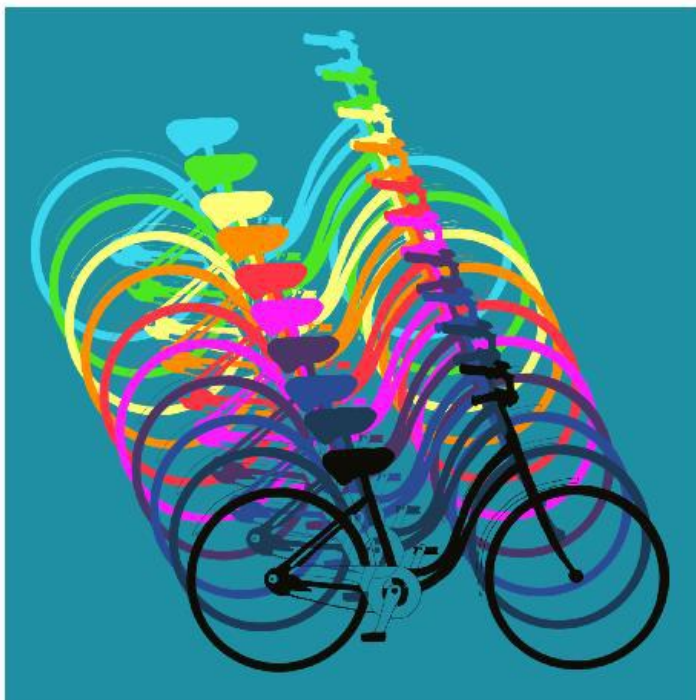


See the poster on the next page for details of our PTA bike sale.

*Liz Carrothers, Foundation Governor*



# **BIKE SALE AND POP UP CAFE**



**Saturday 18th June**

Great Shelford Memorial Hall

8am - 12 noon

To sell a bike contact us on [shelford.bike.sale@gmail.com](mailto:shelford.bike.sale@gmail.com)

Raising funds for Shelford School PTA, Charity No. 1180813



**Recruitment Specialists**  
for the Built Environment



**Jobs & Career advice in:**

**Technical Moves**

- Land, Development & Property
- Surveying & Project Management
- Architecture & Planning
- Civil & Structural Engineering
- Executive Search, Construction, MEP

**01223 845333**

**technicalmoves.com**

Great Shelford based since 2012

## DAVID FOX CARPENTRY

***Purpose-made  
joinery and fitted  
furniture***

Unit 4 Granta Terrace  
Stapleford  
Cambridge

**01223 845143**

### FOOT PROBLEMS?

**Celia Kenney**

(HCPC Registered Podiatrist)

**Call 07939 227195**

(For home appointments)

Treatments cover:

Nail cutting and other nail  
conditions

Corn and callus

removal/reduction

Fungal infections and

athletes foot

Verrucae/warts

The Beechwood Practice

Cambridge CB2 1NT

Call: **01223 315541**

*Bespoke  
Curtains  
& Blinds*

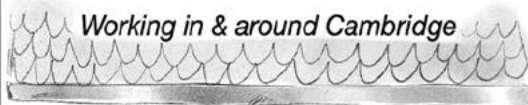
**01223 836498**



**suecrowcurtains.com**

## CAMBRIDGE

WINDOW CLEANING



- Exterior & Interior Windows
- Conservatory Roofs
- Gutter Cleaning
- Pressure Cleaning,  
Paving, Patios & Drives
- Tile Roof Cleaning &  
Moss Removal



**Tel. 07942780601**

**Email. [info@cambridgewindowcleaning.com](mailto:info@cambridgewindowcleaning.com)**

## OUR CORONATION PROGRAMME 1953

Here is an extract from the book 'Great Shelford Remembered 1894–1994,' which was produced by Great Shelford Parish Council to celebrate its centenary.

The book contains articles by many village people in all walks of life, with sections on subjects such as the church, medical services, village traders and many more. It is a mine of information about the village in the 20th century.

This page features a copy of the timetable of events for the celebrations in the village, together with the reminiscences of Wyn Harrison

### DAY'S PROGRAMME

9.30 a.m. UNITED CHURCH SERVICE  
IN THE  
PARISH CHURCH

Conducted by the Vicar—Rev R. GARDNER and Rev C. E. BAYLES,  
Baptist Free Church

11 a.m. SOUND BROADCAST OF THE  
CORONATION SERVICE  
PARISH CHURCH

3.30 p.m. CORONATION SPORTS FOR ALL  
—6.30 p.m. ON  
RECREATION GROUND

4.30 p.m. FREE BUFFET REFRESHMENTS  
for

ALL CHILDREN 15 YEARS AND UNDER  
(MUGS TO BE BROUGHT)

Tickets obtainable—May 12th—23rd from

Church of England School Miss HAYES

Sawston College Mr FOSTER

All others MISS BOND (Woolard's Lane)

In Hall TEA AND BISCUITS Small charges  
(MUGS OR CUPS TO BE BROUGHT)

8 p.m. OPEN AIR DANCING (Special Enclosure)  
(OLD TYME — MODERN — SQUARE)

(ORGANISED BY THE GT SHELFORD OLD TYME DANCING CLUB)

10.30 p.m. CELEBRATION BONFIRE AND  
COMMUNITY SINGING

WEDNESDAY, JUNE 3rd

4 p.m.

FREE TEA—for all aged 65 years and over in the  
Village Hall

TICKETS OBTAINABLE FROM  
OVER 60 CLUB—MOTHERS' UNION—WOMEN'S GUILD

### THE CORONATION OF QUEEN ELIZABETH II, 1953

A few houses had television by this time and one local resident remembers watching the Coronation on one of the early television sets which had a magnifying glass in front of the screen. Undoubtedly much of the planned programme reproduced here will have been achieved but many residents will remember it was rather a wet day.

*Wyn Harrison*

## CORONATION FOOD

In *The Coronation Cookbook*, Marguerite Patten OBE describes the coronations of the four twentieth century UK monarchs. She includes menus and recipes for the food eaten by the great, the good – and the rest.

For the 1953 coronation she explains that, because rationing was still in place, all the menus (including that for Buckingham Palace) reflected ‘a relative simplicity’. But there was Coronation Chicken!



### BUCKINGHAM PALACE BANQUET

◆  
Consommé St George

◆  
Rosettes de Saumon Edinburgh

◆  
Filet de Boef Poêlet Palais

Petit Pois au Beurre,  
Pommes Nouvelles, Salad Mimosa

◆  
Asperges  
Sauce Mousseline

◆  
Soufflés Glacés Princess Anne  
Mignardises Assorties

Drinks were listed with each of the menus. For the Buckingham Palace banquet there was:

Sherry Solera Tarifa 1890

Forster Altenburg Riesling 1949

Chateau Léoville Poyferré 1934

Chateau Yquem 1928

### CORONATION BUFFET MENU

To serve with drinks on arrival

Avocado Dip with Crudités

Cheese Straws and

Cheese Soufflé Tarts

Potato Crisps

Salted Nuts

Melon and Orange Cocktails

Seafood and Rice Ramekins

#### **Coronation Chicken**

Duck and Apple Salad

Potato and Russian Salad

Gooseberry Foules

Summer Meringue Nests

Mixed Ice Creams

---

### A CORONATION STREET PARTY MENU

Bacon, Egg and Chicken Pie with  
Mixed Salad

Home-Made Sausages on Sticks

Mixed Sandwiches

Cheese Scones

Banana Teabread

Orange Cake

Coconut Pyramids

Fruit Jellies

Ice Cream

## A RIGHT ROYAL OCCASION IN 1838

As we gather for our Platinum Jubilee celebrations in a few days' time it will be interesting to reflect on earlier celebrations of royal events, in particular that for the coronation of Queen Victoria.

On 28 June 1838, the Municipality of Cambridge organised one of the largest banquets ever prepared to celebrate the coronation. The total number of participants was 32,000, with 15,000 diners and 17,000 spectators as well as stewards, a band, two college choirs and nearly 3,000 Sunday School children. The dinner itself – for the ‘deserving poor’ was free – but tickets were sold to the spectators.

In total, the diners consumed 1,015 stone of meat (about 6500 kg), 72 lbs (32 kg) of mustard, 140 lbs (64 kg) of salt, 125 gallons (600 litres) of pickles, 4,500 loaves of bread, 1,608 plum puddings of 6.5 lbs (3 kg) each, and 99 barrels of ale; 3 pints (1.75 litres) per man, 1 pint (0.5 litre) per woman and ½ a pint (0.25 litres per child). Not only was it one of the largest banquets, but it was organised in just 13 days.

The dinner, which began at 2pm, was followed at 4pm by ‘Rustic Sports’ on Midsummer Green (now Midsummer Common). The names of the events make interesting reading – the details even more so. Ladies and girls it seems were not expected to exert themselves – unless they were busy washing up on Parker’s Piece.

*Information collated by Polly Stanton*

  
**DIEU ET MON DROIT.**

**CAMBRIDGE  
CORONATION  
FESTIVAL.**

**Rustic Sports,**  
In Celebration of the CORONATION of her Most Gracious  
Majesty QUEEN VICTORIA,  
on **THURSDAY the 26th day of JUNE, 1883.**

The Committee appointed for conducting the RUSTIC SPORTS on the approaching  
Festival entertain in the Public, that the following Amusements will commence  
promptly at Four o'clock in the afternoon.

**ON MIDSUMMER GREEN.**

**NEWMARKET BAULK**  
AND HOW THE BULLS ARE RAN!  
With Special English Rules, and a Prize of £100 for the Winner. To be conducted and managed  
by Messrs. J. H. B. & Co., of Newmarket, Agents of the Race, &c. It will commence at four o'clock on the 26th  
of June, 1883. Tickets, 10s. 6d. each.

**Jumping in Sacks.**  
A number of the sacks in the Newmarket Baulk will be provided to be jumped in, by the competitors  
of the various Counties. A Prize of £100 will be given to the Winner. To be conducted on the 26th of June,  
at Four o'clock.

**BISCUIT BOLTING.**  
A number of the competitors of the various Counties will be invited to bolt biscuits, and a Prize of £100  
will be given to the Winner. To be conducted on the 26th of June, at Four o'clock.

**A JINGLING MATCH.**  
The Best will take place in the Newmarket Baulk, and the Winner will receive a Prize of £100.  
To be conducted on the 26th of June, at Four o'clock.

**WHEELBARROW RACE.**  
The Best will take place in the Newmarket Baulk, and the Winner will receive a Prize of £100.  
To be conducted on the 26th of June, at Four o'clock.

**Robbing for Oranges in Wash Troughs**  
The Best will take place in the Newmarket Baulk, and the Winner will receive a Prize of £100.  
To be conducted on the 26th of June, at Four o'clock.

**ROYAL PIG RACES.**  
The Best will take place in the Newmarket Baulk, and the Winner will receive a Prize of £100.  
To be conducted on the 26th of June, at Four o'clock.

**GRINNING MATCH.**  
The Best will take place in the Newmarket Baulk, and the Winner will receive a Prize of £100.  
To be conducted on the 26th of June, at Four o'clock.

**A RAM RACE.**  
The Best will take place in the Newmarket Baulk, and the Winner will receive a Prize of £100.  
To be conducted on the 26th of June, at Four o'clock.

**ROOTING EXTRAORDINARY.**  
The Best will take place in the Newmarket Baulk, and the Winner will receive a Prize of £100.  
To be conducted on the 26th of June, at Four o'clock.

**PENNY LOAVES AND THRALE.**  
The Best will take place in the Newmarket Baulk, and the Winner will receive a Prize of £100.  
To be conducted on the 26th of June, at Four o'clock.

**RACES**  
The Best will take place in the Newmarket Baulk, and the Winner will receive a Prize of £100.  
To be conducted on the 26th of June, at Four o'clock.

**YOUNG LAD'S MATCH.**  
The Best will take place in the Newmarket Baulk, and the Winner will receive a Prize of £100.  
To be conducted on the 26th of June, at Four o'clock.

**DIPPING FOR EELS.**  
The Best will take place in the Newmarket Baulk, and the Winner will receive a Prize of £100.  
To be conducted on the 26th of June, at Four o'clock.

**ROLLING MATCH.**  
The Best will take place in the Newmarket Baulk, and the Winner will receive a Prize of £100.  
To be conducted on the 26th of June, at Four o'clock.

**DONKEY RACE.**  
The Best will take place in the Newmarket Baulk, and the Winner will receive a Prize of £100.  
To be conducted on the 26th of June, at Four o'clock.

**SECOND RACE.**  
The Best will take place in the Newmarket Baulk, and the Winner will receive a Prize of £100.  
To be conducted on the 26th of June, at Four o'clock.

**A Grand Display of FIREWORKS.**  
Will take place on Friday the 27th of June, at 8 o'clock.



## GREAT SHELFORD COUNTRY MARKET



We are feeling quite up-beat as we prepare for not only our 'Platinum Jubilee Celebration' market on 1 June but also as we watch the stalls in the Plant Section becoming well laden with fine healthy plants – everything from

herbs for your kitchen window sill and plants for your own home-grown early vegetables to garden shrubs. Not forgetting the good selection of preserves, the baking and all the craft work, the Market has so much to offer. Just take a look at our logo: 'COOK-CRAFT-GROW' everything we sell is home-made, home-grown or hand-crafted.

The Wednesday Country Market is a co-operative and belongs to the wider network of 'Country Markets Ltd'. Our members work together and are not individual stall holders. If you'd like to join us as a cook, gardener or crafter, we'd be pleased to hear from you. There are lots of ways to contact us: come into the market, visit our facebook page, phone 01223 843946 or email [dorothy@woodlandroad.plus.com](mailto:dorothy@woodlandroad.plus.com)



*Dorothy Doel*

# DIARY JUNE 2022

| <b>Date</b>        | <b>Event</b>                        | <b>Time</b> | <b>Place</b>             |
|--------------------|-------------------------------------|-------------|--------------------------|
| 1,8, 15,<br>22, 29 | Country Market                      | 9am–11.30am | Memorial Hall            |
| 2                  | WI Talk – The History of Salt       | 7.30pm      | St Mary's Community Room |
| 8                  | Granta Flower Club                  | 7pm         | Memorial Hall            |
| 7, 8               | Art/Photography Exhibition and Sale | 1pm–7pm     | Parish Church            |
| 18                 | Bicycle Sale                        | 8am–12 noon | Memorial Hall            |
| 24                 | Bingo Night                         | 7pm         | Memorial Hall            |



## BIN COLLECTIONS

### Black bins

Tuesday 14 & Tuesday 28 June

## Blue and green bins

Wednesday 8 and Tuesday 21 June



## POST BOXES

Coppice Avenue, Mill Court (Hinton Way), Library, Old Vicarage, Church Street, High Green bus stop, Stonehill Road, Macaulay Avenue. The latest collection from the Post Office is currently 4.45pm Monday to Friday, 11.30am Saturday.



## POST OFFICE

The Post Office is at Kash Stores, 35 Hinton Way.

Open Monday–Friday 9am–5.30pm, Saturday 9am–1pm



Items that Royal Mail is unable to deliver (too big, signature required, etc) will be returned to the Royal Mail Depot in Clifton Road for collection, or redelivery arrangements made.



## LIBRARY

Monday 3–7, Tuesday 10–1 & 2–5, Wednesday 10–1, Friday 10–1 & 2–6, Saturday 10–1.

**Note: the library will be closed on Friday 3 June for the Queen's Platinum Jubilee.**

## NEIGHBOURHOOD PLAN UPDATE

### COMPLETE THE SURVEY AND HAVE YOUR SAY NOW!

We have been really encouraged by the number of responses so far to our first Neighbourhood Plan survey. Thank you to everyone who has filled it in, talked to us at pop-up events and shared your views about what is important to you about the place where we live/work.

In a nutshell, we want to understand what's good, what needs fixing and what's missing, as we seek to meet our villages' planning needs and support a thriving community through to 2040 and beyond. Survey questions cover topics such as: what you like and dislike about living/working here; what kind of new homes you think we need and where they should be located; your views on our green belt and environmental challenges; and how you travel around the area.

Some common themes are beginning to emerge from the survey, but I won't prejudice further responses by reporting on them just yet. However, they are vital in helping us to focus the Neighbourhood Plan on the things which matter most to you. Once the plan is finished, our collective priorities will be reflected in planning policies specific to our villages and sit alongside the Local Plan and the National Planning Policy Framework when assessing planning applications in our area.

The survey will be open until just after Great Shelford Feast in July and we will be in the community talking to people at Stapleford Show (Saturday 4 June) and Great Shelford Jubilee Event (Sunday 5 June). It can be accessed online via our website at [www.greatshelfordparishcouncil.gov.uk/SGSNPlan](http://www.greatshelfordparishcouncil.gov.uk/SGSNPlan), or via the QR code below. Hard copies and a Neighbourhood Plan display are available at Great Shelford library. If you are housebound, we can deliver a survey to you and collect it later. To arrange this, please email [SGSNPlan@gmail.com](mailto:SGSNPlan@gmail.com) or call our Clerk, Libby White, on 01223 616622.



Do take this opportunity to have your say in shaping our villages' future – the survey takes only a few minutes to complete and anyone of any age who lives or works in Stapleford or Great Shelford is eligible to take part.

*Cllr Jenny Flynn, Chair of the Neighbourhood Plan steering group*



# Stapleford *at The Rec* Village Weekend

Cash and card friendly

FRIDAY

## Quiz Night

Doors at 7:00pm. Quiz starts at 7:30pm.  
Max team size 8. Tickets cost £8 per person – includes a drink.  
Direct tickets and food orders to [johnwest1392@gmail.com](mailto:johnwest1392@gmail.com).  
Fish and chip van: fish and chips, £10; veggie option, £7.50.

SATURDAY

SATURDAY

## 4th June

### What's On during the day

Events start with the Dog Show at 1:00pm (entry £2 per class).  
Village Show starts at 2:00pm.  
Samba Band at 3:00pm.  
Other events include: Village cafe, BBQ, ice cream van, stalls, tug of war, circus skills workshop.

SUNDAY

SATURDAY

## Live Band

Music from **The Lonely**

Doors at 7:00pm. Starts at 7:30pm.  
Tickets are £10 in advance from [gillian.pett29@gmail.com](mailto:gillian.pett29@gmail.com) or £12 on the door.  
BBQ with veggie options available.

SUNDAY

SATURDAY

## 5th June

Tour de Stapleford Family Bike Ride starts at 10:00am.  
Cricket play at 1:00pm.  
Church-in-the-Marquee starts at 5:30pm.

### Tour de Stapleford / Cricket

SUNDAY

For further information, see  
<https://staplefordparishcouncil.gov.uk/village-weekend-2022/>



**Beach holidays, City breaks, Honeymoons, Weddings abroad, Adventure holidays, Ski, Cruise, Tailormade trips, Flight only, Car hire, Airport hotels and parking** and much more...

## CHERYL HARRADINE

Travel Counsellor

01223 842670

cheryl.harradine@travelcounsellors.com

www.travelcounsellors.co.uk/cheryl.harradine



Travel Counsellors ensures complete financial protection on every booking

travel counsellors



## WATERLILIES

SKIN CLINIC • BEAUTY

Call 01223 844700 Book online at [www.waterlilies.org.uk](http://www.waterlilies.org.uk)

2d Dolphin Way, Off London Road, Stapleford, CB22



THE  
**Natural Tree**  
ARBORICULTURE SERVICES

### Services include:

- o Removal
- o Pruning
- o Reduction
- o Stump grinding
- o Hedge cutting
- o Planting
- o All tree works

Tel:

07733 011123 or 01223 977739

Email:

[enquiry@thenaturaltree.co.uk](mailto:enquiry@thenaturaltree.co.uk)

Web:

[www.thenaturaltree.co.uk](http://www.thenaturaltree.co.uk)



Environment  
Agency  
Registered Waste Carrier  
no. CBDL361361



### Square & Compasses

Home cooked breakfast, lunch & dinners

Mon-Sat 9am-2pm/5pm-late | Sun 12-late

Take away & local deliveries

Tel: 01223 843273



### The Plough

Food vans Mon-Wed 5pm-8pm

Home made pizzas & burgers Thurs-Sat

Live Sports | Darts | Pool Table

Tel: 01223 847986

## 2G3S

I'm sure many of you will join me in praising Stapleford Parish Council's policy of No Mow May – some of the verges have been looking beautiful, with buttercups, alkanet and cow parsley.

**Past events:** On 6 April, Rob Mungovan of the Wild Trout Trust looked at what can be done to increase the habitat potential for plants and animals of our local rivers and beyond, focusing on the Granta, the Shep, the Mimram, and more. There is a recording of this excellent talk and discussion on YouTube, search for '2G3S Improving Rivers for Trout'.

### Events coming up:

- Saturday 4 June – Come and meet us at our stall at the Village Show at 2pm on Stapleford Recreation Ground. We plan on having some activities for you and your children to do which should be fun as well as informative.
- Monday 6 June, 7.30–9pm – Action for Climate Justice Workshop in Cox's Close Community Room, Stapleford. Do you feel bamboozled by all the talk of carbon emissions and COP26? Do you feel helpless in the face of so much bad news? If so, come along to this friendly workshop organised by 2G3S and the UK Youth Climate Coalition. Katie Williams from the UK Youth Climate Coalition will introduce the workshop, addressing the following issues: What is climate justice? How are people around the world affected by climate change and what are they doing about it? How is Cambridgeshire affected by climate change and what can we do about it locally? This will be followed by general discussion. We want you to leave the workshop with a few good ideas for things you CAN do locally to make a difference and some recommendations for books, websites, podcasts etc for further information. Free event; all welcome! To reserve a place email [greengroupsss@gmail.com](mailto:greengroupsss@gmail.com) with the header line 'Climate Justice Workshop'.
- Saturday 18 June, 2pm – Nature walk, at the Parish Pit in Stapleford, led by John O'Boyle.
- Monday 20 June – Social cycle ride, meet at Stapleford Pavilion at 10am. A leisurely ride on quiet roads and traffic free paths of around 20 miles, to include a coffee stop. Returning to Stapleford by about 1pm. Book with Yasmin at [greener@sawston.org](mailto:greener@sawston.org).
- 3 July – Stall at Great Shelford Feast.
- 30 July, 2–4.30pm – Repair Café in Whittlesford.

## **Wildlife Ponds – Funding Available!**

The Farming and Wildlife Advisory Group (FWAG), based in Trumpington, has written to local Parish Councils about Natural England funding for creating ponds in this area. If you own land, even just a large garden, you may be eligible. FWAG says:

*‘Ponds are a cherished part of the parish landscape; familiar historic features found at the heart of most village centres and in the wider countryside. Sadly, due to changes in land use and agricultural practices, the UK has lost around 50% of ponds in the 20th century. Those remaining are often threatened by pollution. This means the many species of plant and animal that rely on them are also under threat.*

*Excitingly, funding is now available in certain parts of Cambridgeshire for the restoration and creation of clean water wildlife ponds capable of supporting great crested newts. The funding is part of Natural England’s District Level Licencing scheme (DLL), a new strategy for compensating the loss of newt habitats, which seeks to provide new ponds and bigger, better, more joined up habitat for this orange bellied amphibian at a landscape scale.*

*In Cambridgeshire, there is a high demand for such wildlife ponds through the DLL scheme. Most of the 150 or so pond projects we have delivered to date have been fully funded under the scheme. You can view some of these projects at: [www.fwageast.org.uk/ponds](http://www.fwageast.org.uk/ponds).*

*We are seeking local farmers, smallholders, large rural garden owners, land based businesses and parish owned land to create and restore more such ponds. If you have a location in mind in your parish, please email [ponds@fwageast.org.uk](mailto:ponds@fwageast.org.uk) to receive further information or arrange an informal chat. Let’s do something brilliant for wildlife!’*

## **Green tips which people with tiny or no gardens can follow:**

There’s still time to plant some vegetable seeds. Garden for wildlife. Try and walk or cycle rather than drive in the summer weather. Buy local seasonal food – new potatoes, salads, green vegetables, British soft fruit rather than grapes and blueberries from across the world.

If the weather’s not good enough for gardening, then try your hand at the Financial Times’ Climate Game on [ig.ft.com/climate-game](http://ig.ft.com/climate-game). We all shout at the TV when politicians fail to address problems, here’s your chance to have a go at cracking climate change!

If you are interested in green matters and the environment at all levels (individual, local, national, international), email [greengroupssss@gmail.com](mailto:greengroupssss@gmail.com) to sign up for our newsletter, or to get more information about our meetings. Also see our Facebook page and our website.

*Helen Hale*

## Kwanmusic.co.uk

Kwan Music offers:  
Professional tuition by qualified  
and highly experienced  
teachers on piano, organ,  
bassoon, theory, musicianship  
and also assistance with A  
level and GCSE works.

For a free trial lesson with  
no obligation contact:  
[musicoaktree@zohomail.eu](mailto:musicoaktree@zohomail.eu)  
or visit:  
[www.kwanmusic.co.uk](http://www.kwanmusic.co.uk)  
for more info.



**ENTIRE**  
GROUP



300007



The Complete Gas Heating and Plumbing Company

**Plumbing • Heating • Gas  
Bathrooms • Water Softeners  
Property Maintenance**

**Tel: 01954 204044 • Web: [www.entiregroup.co.uk](http://www.entiregroup.co.uk)  
Email: [service@entiregroup.co.uk](mailto:service@entiregroup.co.uk)**

COVID  
secure and  
safe for  
patients  
and staff



## Welcome to Coach House Health Care

– a newly-refurbished and renovated multi-disciplinary clinic,  
situated in the grounds of Anstey Hall, where you can now find  
all your health and well-being practitioners under one roof.

Our qualified, experienced practitioners  
offer treatments in the following areas:

- Podiatry/Chiropody
- Physiotherapy
- Osteopathy
- Sports Massage
- Psychiatry
- Clinical Psychology
- Non-Surgical Cosmetic Treatments
- Plastic Surgery Consultations,  
including skin lesion assessments
- Naturopathy and Nutritional  
Therapy
- Life Coaching/Positive Psychology



Animesh Patel, Plastic  
Surgeon and co-owner  
Lorne Bacon, Podiatrist  
and co-owner



### COACH HOUSE HEALTH CARE

The Courtyard, Anstey Hall, Maris Lane,  
Trumpington, Cambridge CB2 9LG

01223 340491

[reception@coachhousehealthcare.co.uk](mailto:reception@coachhousehealthcare.co.uk)

[www.coachhousehealthcare.co.uk](http://www.coachhousehealthcare.co.uk)

Free car parking and wi-fi

### CLINIC ROOMS AVAILABLE TO RENT

If you are a qualified practitioner,  
looking for a clinic to practise,  
contact us to find out how to join  
our team.



**Good coffee,  
that does good!**

[www.facebook.com/  
caracoffee123](https://www.facebook.com/caracoffee123)

**JASON KIRBY**  
Professional Painting  
& Decorating Ltd

*A Professional Service  
from Start to Finish*

**Tel: 01954 211775**  
[www.jasonkirbyltd.co.uk](http://www.jasonkirbyltd.co.uk)



## PAROCHIAL CHARITIES NEWS

### NEW ALMSHOUSES

The aerial photograph on the cover of the magazine shows the Parochial Charities almshouse development taking shape at the end of More's Meadow. The contractor is making good progress and the charity expects to take possession around the end of the year.

The 21 new units – a mix of one, two and three bedroom homes – are grouped in three terraces set around a landscaped green. Featuring high standards of energy efficiency, the properties are designed to keep running costs low.

Once complete, this development will bring to 53 the total number of almshouse properties owned and maintained by the Parochial Charities. In common with our existing properties, the new units are designed to provide affordable living for Great Shelford people on low incomes.

We will be opening the application process – and advertising the new properties widely around the village – in September.

### TWO MORE DEFIBRILLATORS

For every minute it takes for a defibrillator to reach someone and deliver a shock, their chances of surviving cardiac arrest reduce. The charity is pleased to be funding the provision of an additional two defibrillators for the village; one to be installed in the phone box on Hinton Way, the other on High Green.

### BLIND AUCTION FOR SHIRLEY'S QUILT

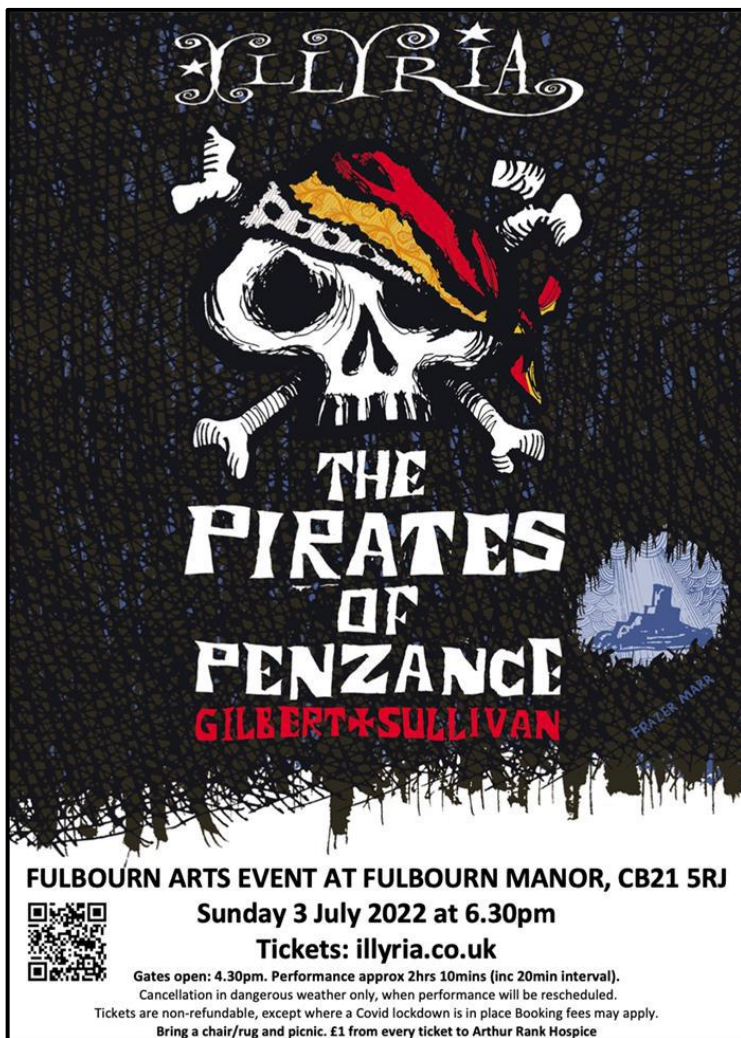
Shirley Warbrick of the Shelfords WI has very generously donated this fabulous quilt to The Parochial Charities. With Shirley's agreement we are holding a blind auction to raise funds for deserving causes in the village. The quilt will be on display at our stall on Feast Sunday with a reserve price of £50. Sealed bids may be submitted either at the stall on the day or by email to [clerk@gspc.org.uk](mailto:clerk@gspc.org.uk) by Tuesday 5 July.



## AND FINALLY ...

Visitors to More's Meadow will know we have recently established a community garden, planting some 250 trees and laying out wheelchair accessible footpaths across the fields adjacent to the new development. So we were saddened to hear that on a recent Saturday evening a fire was lit on our field using stakes taken from the new trees, several of which were destroyed in the process.

*Brian Connellan*



**ILLYRIA**

**THE PIRATES OF PENZANCE**

**GILBERT & SULLIVAN**

**FULBOURN ARTS EVENT AT FULBOURN MANOR, CB21 5RJ**

**Sunday 3 July 2022 at 6.30pm**

**Tickets: [illyria.co.uk](http://illyria.co.uk)**

Gates open: 4.30pm. Performance approx 2hrs 10mins (inc 20min interval).  
 Cancellation in dangerous weather only, when performance will be rescheduled.  
 Tickets are non-refundable, except where a Covid lockdown is in place Booking fees may apply.  
 Bring a chair/rug and picnic. £1 from every ticket to Arthur Rank Hospice

## DUXFORD SATURDAY WORKSHOP

### FREE MUSICAL INSTRUMENT 'TASTER MORNING' AT DUXFORD SCHOOL ON SATURDAY 2 JULY



Would you or your child like to play a musical instrument, but you aren't sure which one? Would you like to try out one or more instruments before making up your mind?

***If so, Duxford Saturday Workshop Taster Morning is for you!***

At this event, experienced tutors and players will help you to have hands on, practical experience of several instruments. They are available to answer your questions and to help you to decide which instrument is the one for you.

This is completely free. There is no need to book in advance and you do not have to be a current member of the Music Workshop to come along – so just arrive and have a go!

Of course, if you decide to join us for the next Workshop year (beginning in September) you will be most welcome. Our current membership rate is only £20 per year, with a weekly attendance fee of just £2 for adults and £1 for children. If you need an instrument, items can often be borrowed from our hire stock for the year at low cost (currently £25 per year), meaning that it is possible to gain tuition and experience of playing for a very modest outlay.

Workshop takes place at Duxford School on Saturday mornings during term time and is very much about enjoying music making in a supportive and fun environment. All ages, abilities and experience levels are welcome and we offer both ensembles and tuition to cater for a wide range of musical interests and tastes.

Instruments included in the Taster Morning:

*Violin, Viola, Cello, Flute, Oboe, Bassoon, Clarinet, Saxophone, Trumpet, Cornet, Trombone, Guitar and Ukulele.*

**When? Saturday morning 2 July, 2022, from 11am–12.15pm**

**Where? Duxford Primary School, St John's Street, Duxford CB22 4RA**

**For further information, see** [www.duxfordsaturdayworkshop.org.uk](http://www.duxfordsaturdayworkshop.org.uk)  
**or email:** [director@duxfordsaturdayworkshop.org.uk](mailto:director@duxfordsaturdayworkshop.org.uk)

*Peter Howarth*



## THE FULBOURN CAT SITTING COMPANY

Operating in the Cambridge area, we offer in-home cat sitting based on your cat's individual needs, giving your feline companion safety, comfort, and familiarity of their own surroundings.

Our aim is to provide professional, reliable, and loving care.

We are fully insured, trained, DBS-checked and NapsUK-registered.

E-mail: [info@thefulbourncatsittingcompany.co.uk](mailto:info@thefulbourncatsittingcompany.co.uk)

Tel: Laura 07742969374 | Chloe 07704207560

Web: [www.thefulbourncatsittingcompany.co.uk](http://www.thefulbourncatsittingcompany.co.uk)



## TM Electrical SERVICES

The Complete Electrical Service

Local - Experienced - Competitive

E: [enquiries@tm-electrical.com](mailto:enquiries@tm-electrical.com)

[www.tm-electrical.com](http://www.tm-electrical.com)

38 Cheddars Lane, Cambridge CB5 8LD

Tel: 01223 441111

FREE ESTIMATES



## Carpet, Upholstery, Fine Rugs, Stone Floor Cleaning, Wood Sanding

*"We were very satisfied with the technician and the way the carpets were cleaned. He was very polite and phoned to say he was coming and again later to let us know he would be with us shortly. Thank you for your services." Mrs Burling*

Call today

01223 863632



Please  
quote  
Great  
Shelford  
Mag

Art of Clean, Denny Lodge Business  
Park, Ely Road, CB25 9PH  
[www.artofclean.co.uk](http://www.artofclean.co.uk)

# THE GOG

FARM SHOP  
ESTD • CAMBRIDGE • 1919

BUTCHERY • DELICATESSEN • GROCERY • CAFÉ

**WWW.THEGOG.COM**



## SAWSTON OPEN GARDENS

Five Sawston gardens are opening their gates to visitors on Sunday 3 July for the National Garden Scheme (NGS). This important charity was founded in 1927 and has since raised over £63 million for a number of nursing charities, funded entirely by charging a small fee to visit participating gardens. Despite disruption and closures during the pandemic, the NGS raised £2.9 and £3

million in 2020 and 2021 respectively. The main beneficiaries are Macmillan Cancer Support, Marie Curie, Hospice UK, Carers Trust and The Queen's Nursing Institute. See [www.ngs.org.uk](http://www.ngs.org.uk) for more details.



This year there are four private gardens plus the Mary Challis Garden to visit from 1–5pm. Start where convenient

and collect a map. Details of the openings, with garden descriptions, are on the NGS website. Visitors are encouraged to book their visit online or can simply turn up and pay at the first garden. Entrance fee is £6 for all gardens; children free.

Do come along to view some of Sawston's finest gardens and support these important charities. Home made teas and cakes in the Mary Challis Garden from 1.30–4pm.

Enquiries: Mike and Ann Redshaw  
01223 834511.



## ICKLETON OPEN GARDENS

### FLORAL DELIGHTS BEHIND OUR HIGH FLINT WALLS

Just six miles south of the Shelfords is a village with many high walls that might leave you wondering what lies on the other side. Ickleton Open Gardens, on Sunday 19 June from 11am–5pm offers the rare opportunity to look behind some of those walls to take in the sights of 20 varied private gardens. It is only the fourth time in 50 years that our gardens will have been opened for charity.

As well as gardens to view there will be lunches, teas with home made cakes, sales of plants and local produce, beekeeping, and weaving demonstrations by a willow sculptor. Gardens open include established cottage gardens, newly planted, drought tolerant; a family garden with quintessentially English planting; a magical ‘fairy land’ garden and the extensive formal gardens surrounding a large manor house. 19 June is Fathers’ Day; what better way to treat Dad than a stroll around gorgeous gardens followed by tea and cake!

Tickets (£6 for adults, accompanied children are free) will be available on the day from the Village Hall, Frogge Street, Ickleton, CB10 1SH. There is also parking at the Hall.

Proceeds from the event are in aid of Ickleton Village Hall, Motor Neurone Disease Association and YoungMinds – a mental health charity for children, young people and their parents. The last two charities were chosen respectively in memory of much missed Ickleton residents.

The event is kindly sponsored by: Bread & Meat, HSA Accountants, Wild Country Organics, Mr & Mrs P R Wombwell and Hexcel.

***Come and enjoy a day out in the garden!!***

## ASHDON OPEN GARDENS

***Sunday 12th June, 11am – 5pm***



*Programmes from the Village Hall, CB10 2ET  
and from All Saints church rooms, CB10 2HG.*

*Admission: £5 adults, children free.  
Proceeds to All Saints Church, Ashdon.*

*Refreshments in the Village Hall and  
church rooms. Disabled facilities.*

***Further details: 01799 584945***

## Care For Trees



Qualified  
Reliable  
Insured  
Affordable

For a free quote call **Mike Wallman** on 01223 846390 or email [info@carefortrees.co.uk](mailto:info@carefortrees.co.uk)

FAMILY **Barker Bros** BUTCHERS  
EST 1843



Packaging  
Free  
Vegetables  
now on  
Sale

**QUALITY, LOCAL MEAT FOR EVERYDAY**

43 High Street, Great Shelford  
Tel: 01223 843292 [www.barkerbrosbutchers.co.uk](http://www.barkerbrosbutchers.co.uk)

## J M R Electrical



**Electrical  
Contractor**



All Domestic, Industrial &  
Commercial work undertaken

21 Ashen Green, Great Shelford, Cambridge  
Email: [jmr.electrical@hotmail.com](mailto:jmr.electrical@hotmail.com)  
Tel: (01223) 844680 Mobile: 07766 68 38 86

## QUALITY BESPOKE PICTURE FRAMERS

**SIMON ROBINSON  
& SON**

Professional, Friendly Service  
Over 25 years' experience

Wide Selection of Frames  
Conservation Materials Used  
UV Protective Invisible Glass

Artwork/Photography  
Needlework/Tapestry  
Oil Paintings and  
Canvases Stretched  
Unusual Objects Framed  
Made to Measure Mirrors  
Limited Edition Prints Available

**Tel. 01223 873123**

Opening Hours:  
Tues-Fri. - 9am-5.30pm  
(Saturday - By Appointment)

[www.robinsonframes.co.uk](http://www.robinsonframes.co.uk)  
[lester@robinsonframes.co.uk](mailto:lester@robinsonframes.co.uk)

**STUDIO 6, PENN FARM,  
HARSTON RD,  
HASLINGFIELD, CAMBRIDGE  
CB23 1JZ  
(AMPLE PARKING)**

## HEATWAVE SERVICES



- Qualified to service and repair gas, oil and LPG boilers
- Installation of new central heating systems, unvented hot water cylinders
- Landlord Certificates
- Worcester Bosch Accredited Installer

Whittlesford based company for all your heating and hot water requirements

Tel: 01223 837774 or 07795 304013  
Email: [heatwaveservices@btconnect.com](mailto:heatwaveservices@btconnect.com)  
15 Maynards, Whittlesford, Cambridge, CB22 4PN

## SHELFORD FEAST



Are you ready? You have cleared your diary I hope? And you have noticed that Feast Day of The Shelford Feast is at the beginning of the week – Sunday 3July. Look out for the marquee going up in the last week of June.

And so The Feast returns, updated and excitingly new while still the reliable entertaining event of the year.

First, the changes. Where we used to wind up to a big conclusion, we now start with a bang and follow up with lots of entertainment – the echo of the Big Bang! The Festival starts with the Beer Festival and Family Day on **Saturday** July 2, followed by the ever popular Big Ten Ska night. Then **Sunday** dawns with Feast Day, food, drink, music, events and stalls from 12 noon. Remember that entry is by programme at £2 per head and we are cashless for food and drink. Tickets for all events are online from [shelfordfeast.co.uk](http://shelfordfeast.co.uk) or from village outlets – but note that village shops cannot take cards for these tickets, so cash or cheques (remember them?) please!

On **Monday** there is a Pop-up Karaoke evening, free entry. Come in and belt out your favourite songs!

**Tuesday** is our version of Strictly with performances by Ballroom Boys, Vincent Simone and Ian Waite plus local dance groups.

**Wednesday** is Comedy Night, always popular and we can promise big names!

**Thursday** is Quiz Night so be sure to book in for teams of up to 8. Food is included so download the Quiz Night Entry Sheet and select your team name and food choices.

**Friday** is special, with a choice of ex-Spandau Ballet star Tony Hadley in the marquee or Daniela Rossi's classical performance in St Mary's.

Finally, Radio 2 Legend, Trevor Nelson is DJ on **Saturday** night to end The Shelford Feast the same way it began – with a Big Bang!

**Volunteers.** And now a plea. Not only do we depend on you to turn up to these events so we can donate to local good causes, but we need help to run the evenings. All offers to help out in the food tent or on the bar, to move furniture or help out in other ways are gratefully received. Do contact Sarah Coppendale on [coppendales@btinternet.com](mailto:coppendales@btinternet.com) or ring 01223 842498.

All event details are on our website at [shelfordfeast.co.uk](http://shelfordfeast.co.uk)

We hope to see you at **THE SHELFORD FEAST!**

*Duncan Grey*

## WI



Our speaker, Rob transported us this month to the olive orchards of southern Cyprus, where his family grow and make organic olive oil. Olive trees have been grown in Cyprus for 4000 years and it was fascinating to see how simply this product can be made from harvest to the pressed end product of extra virgin bottled oil. Eight years ago, Rob and his wife joined with the family to produce

the oil and halloumi cheese, under the name of OliveOlive. Today the products are sold mainly directly to restaurants, farmers markets, festivals and Deli's and mostly in the Cambridgeshire region. Thursday was a really jolly and informative evening with chance to socialise and catch up with members and friends once more.

St. Mary's church where we meet is looking for enthusiastic volunteers to help prepare and display flowers for the Church. You don't have to be an expert flower arranger, you would always work in pairs, and help, guidance and funds are available. If you feel you could help with this, Veronica Stower would love to hear from you.

Our meeting next month, held on the first Thursday in June will consider the history of salt. Do look out for the many events celebrating the Platinum Jubilee to be held in our village soon and enjoy the sunshine. Stay safe.

*Rosemary Livings, President*

## CAMBRIDGE FLOWER CLUB

We meet at the Memorial Hall, Mill Lane, Whittlesford CB22 4NE at 7.15pm, for a demonstration, with refreshments from 6.45pm.

New members welcome! Visitors pay £6.00.

### Future Meetings

|           |                                                                                                                                                                                                                                                      |
|-----------|------------------------------------------------------------------------------------------------------------------------------------------------------------------------------------------------------------------------------------------------------|
| June 16   | Madeleine Bradley: 'Summer Blooms Aplenty'                                                                                                                                                                                                           |
| July 21   | Stephanie Laing: 'On the move'                                                                                                                                                                                                                       |
| August 18 | OPEN MEETING at 6pm with: <ul style="list-style-type: none"> <li>• Katherine Kear President of NAFAS (National Association of Flower Arrangement Societies)</li> <li>• 'White Knights'</li> <li>• stalls and refreshments</li> </ul> Tickets £15.00. |

For more information about these meetings or to enquire about joining please phone Freda on 01223 891464 or email [fredaorgee@gmail.com](mailto:fredaorgee@gmail.com)

*Sian Jones, Assistant secretary to Cambridge Flower Club*

**Gavin Langford Architects**  
[www.gavinlangfordarchitects.com](http://www.gavinlangfordarchitects.com)



**RIBA**  
 Chartered Practice

The *Great Shelford Village News* is unable to check or verify the warranties or representation made by their advertisers and must therefore exclude any liability whatsoever arising from any advertisement in the *News* magazine, nor do any statements necessarily accord with the views of the editors.

*Great Shelford Solicitors*



**DAVIES**  
 solicitors advocates & mediators

- Family
- Divorce & Separation
- Children
- Civil Disputes
- Wills & Probate
- Estate & Tax Planning
- Powers of Attorney
- Court of Protection

*For a quality and attentive service*

Please Call: **01223 842211**

[www.daviessolicitors.co.uk](http://www.daviessolicitors.co.uk) [law@daviessolicitors.co.uk](mailto:law@daviessolicitors.co.uk)  
 30 Woolards Lane, Great Shelford, Cambridge CB22 5LZ

*Free and easy parking*

**MegaStorage**

**SAFE & SECURE SELF STORAGE**

**Self Storage in Sawston**

**Clean, Dry & Secure, 24/7 Access**

 **ssa** self storage association United Kingdom

[www.MegaStorage.co.uk](http://www.MegaStorage.co.uk)

**01223 833 777**



## HOSPITAL VOLUNTEERS

### **Would you like to try volunteering? Do you have 2–3 hours to spare?**

At Cambridge University Hospital (Addenbrooke's and the Rosie) volunteering is a long established part of hospital life. We have a variety of different roles to suit different interests so there's likely to be one to suit you. All are designed to help improve the experience of our patients, whether as an in or outpatient.

It is well recognised that volunteering is beneficial to an individual as it can help increase one's physical and mental wellbeing. Some of the many benefits of becoming a volunteer with us include:

- An opportunity to help those in need without requiring any specific skills. Many of our volunteers have patient facing roles and training is given in all of them.
- Ongoing support – mentoring, training, newsletters and social events.
- Use of the onsite sports and leisure centre at staff rates (including a swimming pool) and other benefits.

You may have spent time supporting your local community during the pandemic and are now looking for a longer term volunteering opportunity. It may be that you've been inspired by our amazing NHS and want to 'do your bit' or perhaps you want to 'give back' for the support and care you, your friends and family have received.

There are many reasons why people decide to volunteer with us. Julia, a library volunteer explains, 'I've been part of the library volunteering team since September 2018 and find it very rewarding. It is a privilege listening to patients and talking with them, from young adults to centenarians. It is also really important to me to be able to offer something back to the NHS.'

Wheelchair volunteer, Iain, tells us why he chose to volunteer: 'Back in October 2017, my uncle spent a lot of time at Addenbrooke's having a tumour removed from his brain. On my nightly visits to keep him company, I saw first-hand what a wonderful job the ward volunteers do. My uncle called them his 'Boredom Busting Angels'. I knew then that I wanted to offer my time to be part of the wonderful team of volunteers at CUH.'

Volunteers often remark how much they enjoy speaking to people from all different walks of life that they would not otherwise come into contact with. Ward volunteer, Frank, tells us more, 'I enjoy volunteering here because I feel that my small contribution to patients' lives makes a positive difference. I'd certainly recommend it.'

Find out more information at <https://www.volunteering.cuh.org.uk/> or give us a call on 01223 586616. We would love to hear from you.

*Jane Robinson, Deputy Voluntary Services Manager*

## COMPUTER PROBLEMS? CALL EAGLE ANALYSIS



We have 40 years' experience and are Shelford-based.

- Need a new computer, laptop, tablet, iPad, printer, digital camera, smart TV? We can advise on the best options and supply and install.
- Need to set up Internet and network; problems with wireless deadspots? We can sort that for you.
- Dead computer or printer? We can fix it.
- Deleted your photos? We can recover them.
- Got a virus? We can remove it and prevent recurrence.
- Being scammed? We can help.

Call Mike Nettleton on 01223 721366 (M 07905 356468)

email: [info@eagleanalysis.co.uk](mailto:info@eagleanalysis.co.uk) web: [www.eagleanalysis.co.uk](http://www.eagleanalysis.co.uk)

**SOPHOS**  
Silver Partner



REGISTERED  
PARTNER

Ontrack® Data Recovery  
Authorized Partner



## The Country Store

*Pet, Equine, Smallholder,  
Shooting supplies,  
Country clothing,  
Wild bird food*

Unit 12a, Sawston Park,  
Pampisford, Cambridge  
CB22 3EE

[www.thecountrystore.co.uk](http://www.thecountrystore.co.uk)

Tel 01223 837977

**SAM  
McGUINNESS**

**CURTAIN MAKING  
ROMAN BLINDS  
SOFA COVERS**

Call or email  
for a free quotation  
07808 737518

[samcampbell39@hotmail.com](mailto:samcampbell39@hotmail.com)

## D.L.M. AUTOS

63a Orchard Road, Great Shelford CB22 5AA

## MOT - SERVICE - REPAIR

01223 844828

[www.dlmautos.co.uk](http://www.dlmautos.co.uk)



**FIRST CARE HOMES**

WHERE CARE COMES FIRST

## The Cambridgeshire Care Home

Situated in Great Shelford, the premier choice for a boutique care home in historic Cambridge. We provide unrivalled care using state-of-the-art technology and offer Dementia, Nursing and Residential care with a fully inclusive service package.

To enquire or book a showround call 01223 551 200 and ask for Yvonne Quigley, Customer Relations Manager.



## OPEN ARMS IN SHELFORDS/STAPLEFORD (OASISS)



OASISS is a community initiative in three villages just South of Cambridge (Great Shelford, Little Shelford, and Stapleford). Our aim is to welcome Ukrainian refugees eligible under the Government's 'Homes for Ukraine' (HfU) scheme into our homes and community. Guests arriving under this scheme will be able to live and work in the UK for up to three years and access benefits, healthcare, employment and other support.

An initial call for potential hosts was made across the three villages using online newsletters, word of mouth, and through announcements at local churches in late March. The initial response was remarkable; we received 69 offers of accommodation (including nine offers of relief accommodation) primarily from the three villages, but with a few hosts joining from elsewhere. We have also received many generous offers including financial, legal and IT help, TEFL teaching, hosting events, classes, activities, transport, bicycles, toys and equipment.

Contacts helping to identify potential refugees include the Cambridge Ukrainian Society, Keble Association Oxford, Sunflower Sisters, Cambridge University Ukrainian Society, Cambridge4Ukraine UK and known individuals on the ground in Hungary, Poland and Austria.

As of 14 May, six adults and five children have arrived and with four host families. A further 45 adults and 19 children have been granted visas and we await their arrival. We are also working with another 14 adults and seven children who are still awaiting their visas. This makes a total of 65 adults and 31 children who will be joining our communities.

At present we are short of homes for other refugees and would love to hear from anyone who feels they may be able to offer accommodation; if unable to host, there are very many other ways you can help.

OASISS will soon be launching a website and has teamed up with the Cambridge charity, It Takes a City (ITAC) [www.ittakesacity.org.uk](http://www.ittakesacity.org.uk) to facilitate Gift Aid donations to help our Ukrainian guests with travel assistance and other needs on arrival.

If you would like to learn more or feel you may be able to help in any way, please see our website at <http://www.oasiss.uk/> or email us on [openarmsgranta@gmail.com](mailto:openarmsgranta@gmail.com).

# STAPLEFORD GRANARY

ARTS, CULTURE & EDUCATION

## JUNE

### Kathryn Tickell & The Darkening

Friday 10 June | 7:30pm COURTYARD CONCERT

Foremost exponent of the Northumbrian Pipes



### Liz McGowan exhibition launch

Sunday 12 June | 11:00am

Cloaks, sculptures & earth works



“...my favourite venue  
for live music...”

### Kabantu COURTYARD CONCERT

Saturday 18 June | 7:30pm

Global award-winning folk collective



### Stone Age Stories - Theatre of Widdershins

Sunday 19 June | 2:00pm

Prehistoric humour, puppetry & storytelling (age 4+)



### Lewis Barfoot & Elisabeth Flett

Saturday 25 June | 7:45pm

Folk music inspired by woods & water



### Matt Ford Trio

COURTYARD CONCERT

Sunday 26 June | 2:00pm

The finest big band singer in the UK  
with music from Broadway, Hollywood  
& the Great American Songbook



“...what a find, world class music in  
a beautiful setting...”

[www.staplefordgranary.org.uk](http://www.staplefordgranary.org.uk)  
01223 849004

# GATWARD & SONS

**BUILDING ON EXPERIENCE**  
CARPENTRY, JOINERY & BUILDING CONTRACTORS

☎ **01223 570 143**

📞 **07525 494 478**

✉ [contact@gatwardandsons.co.uk](mailto:contact@gatwardandsons.co.uk)

**BASED IN STAPLEFORD**

**EXTENSIONS  
CONVERSIONS  
RENOVATIONS  
ALTERATIONS**

## Rainbow Pre-school

A unique place to play and learn in Shelford



A caring community pre-school  
in Shelford for 2-4 year olds  
Open Mon-Fri from 9am to 3pm  
(term-time)

For more information visit  
[www.rainbowshelford.co.uk](http://www.rainbowshelford.co.uk)  
or contact  
[enquiries@rainbowshelford.co.uk](mailto:enquiries@rainbowshelford.co.uk)

Tel: 07985 216603

Manager: Allison Tomlin

## Thomas J Shearing

### Furniture Restoration and Traditional Upholstery

Comprehensive re-upholstery service  
Vast range of furnishing fabrics  
Antique and modern furniture restored

### Picture Framers and Restorers

French polishing and other finishes available  
Bespoke mirrors made to order

Serving Great Shelford and Cambridgeshire  
Tel: 07801 357148 Email: [shearing@mail.com](mailto:shearing@mail.com)



**PANTHER TAXIS**

Get out and about and save money with  
**PANTHER TAXIS**

Did you know that we now offer a REDUCED RATE  
village to village service to or from YOUR VILLAGE?



Only pay  
door to door  
not a penny  
more

Find out how much  
you can SAVE by  
downloading our app



With a fleet of over 650 vehicles running  
24/7, you know who to call.

**01223 715715**  
[www.panther taxis.co.uk](http://www.panther taxis.co.uk)

Prices are fixed based on the Cambridge metered rates  
to or from the included villages.  
Villages outside of this area may still have a callout fee.

## CHIMNEY SWEEP

**J. L. WIGHT**  
Guild of Master  
Chimney Sweeps



Fully Insured

Advice given / problems  
solved

Certificates issued  
**01954 253315**  
[www.camsweep.co.uk](http://www.camsweep.co.uk)

9 Cow Lane, Rampton

# STAPLEFORD CHORAL SOCIETY

## SUMMER CONCERT

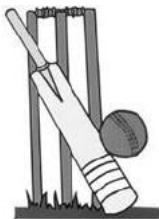
**Saturday 25 June 2022 at 7.30pm**

**St Mary's Church, Sawston, CB22 3JR**

**Join us for a performance by Stapleford Choral Society and the orchestra of the Academy of Great St Mary's, including works by Purcell and Handel.**

**Tickets £10 on the door.**

## CRICKET CLUB



The season started with a very enjoyable friendly against Cambridge Kerala. The venue off Sedley Taylor Road provides some opportunities for train passengers to glimpse the play, but under some threat from six hitting; notable from our captain for the day Jeff Wilson. Cam Kerala's rapid scoring was curtailed by our leg spinning duo Mark Milne and Theo Ball,

and a target of 213 was set. The skipper's 43 set us on the way and with contributions down the order we squeezed home by two wickets with one ball to spare.

The first league match against Harlton was more comfortable, with many good contributions to a total of 233, led by Jeff Wilson's 63. Fazal Lee's relentless accuracy set the opposition on the back foot with figures of two for six off six overs, and nearly all the rest fell to Theo Ball's leg breaks and googlies. Theo's figures of seven for 37 are thought to be a club 1<sup>st</sup> XI record. Fabian Araujo distinguished himself in the field with three catches, including dismissing Harlton's threatening opening batter.

The juniors have also got started with matches for our Under 10 and Under 12 teams as well as around a hundred youngsters brightening up the Rec in the All Stars and Dynamos programmes on Tuesday and Friday afternoons.

Home matches in June are on Saturday 11 and Saturday 25, starting at 1.30pm. Spectators are very welcome, and post Covid we may even be allowed to offer a cup of tea.

*Peter Ede, Chair*

## TENNIS CLUB

### WINTER MIXED DOUBLES HANDICAP TOURNAMENT

Monika Jacquinot and Michael O'Grady were worthy winners in the final of the Winter Mixed Doubles Tournament in an exciting match against runners up Anna Pigram and Andris McGee.



16 pairs challenged each other in round robin matches over November, December and January with the best eight pairs going through into a knockout over February and March.

Tournament organiser, Marcus Forgham said, 'It was great to see so many players taking part, with the handicap system allowing players to meet and compete against new people of all levels and giving everyone a chance of success.'

The tournament was conceived to keep members playing competitive matches through the winter months when there are fewer Cambridgeshire League matches and is in its second year. It has

proved very popular and is now a firm fixture in the Club's calendar.

Summer tournaments will be starting soon, watch this space for details of future winners!

*Angharad Harris*

## CARPET BOWLS

Due to lack of support Great Shelford Carpet Bowls have had to cancel their meetings until 8 September. It just wasn't viable to carry on.

We look forward to starting again in September and hope anyone interested will come along.

*Wendy Seekings Secretary*

## TRADITIONAL RESTORATIONS

**A FRIENDLY LOCAL SERVICE  
FOR ALL TYPES OF ANTIQUE &  
MODERN FURNITURE**

A complete restoration service:

- All types of furniture repairs
- Traditional French polishing
- Hard-wearing, high-quality lacquer finishes
- A comprehensive re-upholstery service



Over 20 years working in the local area  
Free estimates & advice given on all work

**JONATHAN PORTER**

**5 BABRAHAM ROAD, SAWSTON, CAMBRIDGE CB22 3DQ**  
TEL 01223 835515 MOB 07932 611184

## STEVE the PLUMBER

Steve the Plumber is a local plumber with a friendly, helpful and reliable service. Small or larger jobs undertaken. Competitive rates.



Please call 07803922517  
or email  
steve\_the\_plumber@me.com



**Paul J Neaves**

### Neaves Electrical Ltd

*All aspects of electrical  
work undertaken -  
installation, maintenance  
& repairs*

[www.neaveselectrical.co.uk](http://www.neaveselectrical.co.uk)

Telephone:  
01223 290956  
Mobile:  
07702 280687  
Email:  
[paul@neaveselectrical.co.uk](mailto:paul@neaveselectrical.co.uk)



**Free Estimates & Advice**

Block paving driveways, patios & paths  
All landscaping services  
Self-sufficient with own machinery  
Over 10 years' experience  
Free warranties:  
- 5 years on workmanship  
- 10 years for materials  
- Manufacturers' guarantees

**BRADSTONE** Assured

**LETT**  
built on relationships



**amsbuildingandlandscaping.co.uk**

01638 721893 info@amsbuildingandlandscaping.co.uk

## ANGLIA TREE CARE



*A O'Connor*

**Tel: 01223 424454**

23 King Street  
Cambridge CB1 1LH

*Tree surgery  
Stump grinding  
Hedge maintenance  
Fully qualified & insured  
All work carried out to British  
Standard BS3998  
Member of the Guild of  
Master Craftsmen*



[www.angliatreecare.co.uk](http://www.angliatreecare.co.uk) Email: [info@angliatreecare.co.uk](mailto:info@angliatreecare.co.uk)

## FROM THE CAM TO THE CHANNEL PART 2 – UMBLES!

I have been double dipping, swimming first in the Cam and then heading to Jesus Green lido. I am in a six member relay team aiming to swim the 21 miles to France from Dover harbour on 30 June. Each of us will swim one hour at least twice in the Channel.

Our boat leader will draw up the order that we will swim in just as we leave, and we have to stick to that. If number five fails, we all fail. So ensuring that we can jump in the water once and then five hours later do it again is an essential part of our training.

However, at my first attempt I have begun to ‘umble’. I am used to shivering and grumbling but, as I leave the Cam, I fumble and cannot put my shoes on. My toes are still cold when I get in at Jesus Green. At the end of my ninth length I realise my training buddy has no idea what I have just said. This is a bout of the mumbles, or slurring.

The Channel swimming association outlines the ‘umble’ stages that lead to hypothermia. So, here’s a guide to reading your body’s response to cold water and lower temperatures. The cold causes blood vessels to contract, so less blood flows to our extremities, which is why our feet and fingers feel cold. If we don’t act swiftly to warm up, we’ll go through various ‘umble’ stages. First we lose our fine motor skills and we start to fumble. We cannot do up our shoe laces or buttons.

Our cognitive skills are the next to decline, we mumble and grumble. But the next stage is to tumble and stumble as our gross motor skills dwindle and we cannot walk unaided. The stumbles and beyond is potentially very dangerous. As our core temperature drops below 37 degrees C, we start to really shiver.

The final stage is the crumbles, when everything falls apart. Below 28 degrees C is defined as severe hypothermia. The body cannot shiver anymore and blood pressure drops. You may lose consciousness. This is a medical emergency.

Take action as soon as you get out of the water. Bundle yourself up warmly, take off your wet things and get dry, put on a woolly hat and gloves and wriggle into your core layers as quickly as you can to warm up your body. Finally put on trousers, socks and easy to put on sliders or big boots. Drink something hot and sweet, no alcohol. Jump. Then you can let yourself settle for a chat. Watch out for the ‘after drop’, which you can feel six to ten minutes after coming out of the water when the core temperature is at its lowest.

To sponsor me or to find out more about my swim and about the charity Aspire please visit <https://www.justgiving.com/fundraising/sarah-provan1>

*Sarah Provan*

## FOXCOTTE FENCING

A family run business offering:

- \* A landscaping yard
- \* A DIY shop
- \* Garden machinery sales and services
- \* Tree surgery
- \* Woven willow fencing
- \* Garden studios

Foxcotte Fencing,  
Comberton Road,  
Barton,  
Cambridge CB23 7BA

Telephone:  
01223 263702

Email:  
info@foxcottefencing.co.uk

Web:  
www.foxcottecambridge.com



## Jackson Cox Opticians

A Saxena MCOptom  
Optometrist

- NHS & Private Eye Tests
- OCT Eye Scans
- Cataract, Glaucoma and Macular Degeneration Checks
- Contact Lens Checks

30a Woollards Lane, Great Shelford, CB22 5LZ  
Telephone: 01223 840 441  
www.jackson-cox-optician.com



- Home • Workplace • Public •

01223 430040

www.cambridge-evpoints.co.uk

Contact our experienced team for all your EV charging needs.



CAMBRIDGE  
ELECTRICAL  
SOLUTIONS LTD



After a buyer who loves  
what you've done?

Best talk to Bidwells

  
BIDWELLS



PROUD SPONSORS OF SHELFORD RUGBY CLUB

01223 624 573  
talktobidwells.co.uk



## WHAT'S ON IN JUNE

A round up of what's on at some of the venues near us. For more information, times, ticket prices and bookings, please contact the organisation. This information has been taken from websites, can be subject to change and the event may already be fully booked.

| CAMBRIDGE ARTS THEATRE                                                                                                     |                                           |
|----------------------------------------------------------------------------------------------------------------------------|-------------------------------------------|
| 7 – 9                                                                                                                      | <i>The Tiger Who Came to Tea</i>          |
| 10 – 12                                                                                                                    | <i>Dinosaur World Live</i>                |
| 13 – 18                                                                                                                    | <i>The Dance of Death</i>                 |
| 20 – 25                                                                                                                    | <i>The Rocky Horror Show</i>              |
| 28 – 29                                                                                                                    | Ballet Black                              |
| 30 June – 2 July                                                                                                           | <i>Showstopper</i> The Improvised Musical |
| Telephone: 01223 357891                                                                                                    |                                           |
| Web: <a href="https://www.cambridgelive.org.uk/tickets/contact-us">https://www.cambridgelive.org.uk/tickets/contact-us</a> |                                           |

| SAWSTON CINEMA                                                                                                   |        |                                                             |
|------------------------------------------------------------------------------------------------------------------|--------|-------------------------------------------------------------|
| <b>Sawston Jubilee</b>                                                                                           |        |                                                             |
| <b>One day Film Festival - 2 June</b>                                                                            |        |                                                             |
|                                                                                                                  | 11am   | <i>Lady and the Tramp</i> (Disney)                          |
|                                                                                                                  | 1.30pm | <i>Projecting the Past</i> (The story of cinema in Sawston) |
|                                                                                                                  | 2.30pm | <i>Henry Morris – The Life and Legacy</i>                   |
|                                                                                                                  | 4pm    | <i>Journeys Intertwined</i>                                 |
|                                                                                                                  | 5.40pm | <i>The Quiet Man</i> (with John Wayne)                      |
|                                                                                                                  |        |                                                             |
| 16                                                                                                               | 7pm    | <i>Straight Line Crazy</i> (with Ralph Fiennes)             |
| 23                                                                                                               | 7pm    | <i>Dark Waters</i> (with Mark Ruffalo)                      |
| Telephone: 01223 712825                                                                                          |        |                                                             |
| Web: <a href="http://sawstoncinema.org.uk/cinema-screenings/">http://sawstoncinema.org.uk/cinema-screenings/</a> |        |                                                             |

## HOW TO CONTACT GREAT SHELFORD VILLAGE NEWS

We are pleased to receive articles, letters and notices for community events for consideration. Please send by email (preferably as a Word document), or send paper items, with contact details, to Judith Wilson, 11 Elms Avenue, Great Shelford, CB22 5LN. The copy date is usually the second Friday of the month. See the *Next Issue* box for next month's date.

For guidance, please note that an article of around 400 words, without a photograph, will fill a full page. Notices for events work best as a half page (half A5) in landscape format.

### General enquiries and articles for publication:

01223 842553    [gsvneditorial@gmail.com](mailto:gsvneditorial@gmail.com)

### Commercial advertisements

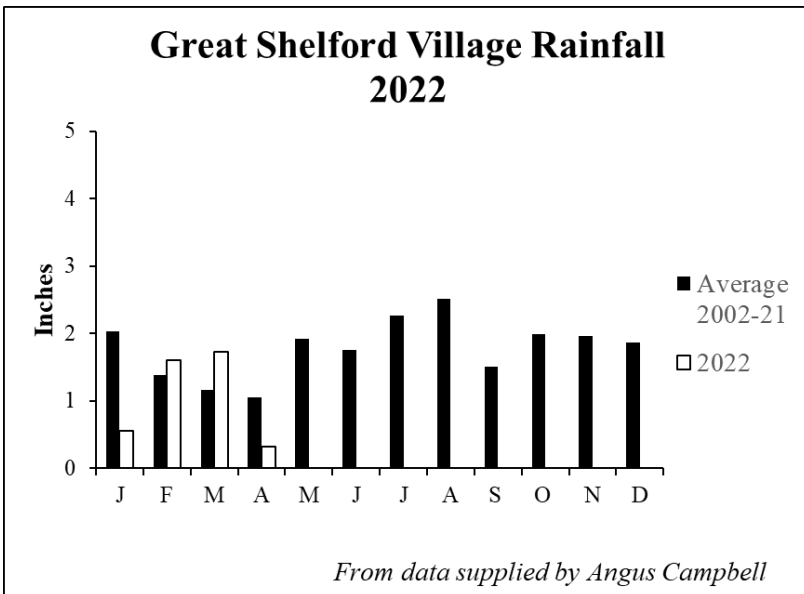
These are for a 12 month period, renewed in January. There is a waiting list.  
[gsvnadverts@gmail.com](mailto:gsvnadverts@gmail.com)

### Subscriptions and online payment details

01223 842993    [gsvnsubs@gmail.com](mailto:gsvnsubs@gmail.com)

### Editorial Committee

Duncan Grey, Bridget Hodge, Marjorie Smith, Judith Wilson.



## LOCAL ORGANISATIONS

|                                                         |                                      |                                              |               |
|---------------------------------------------------------|--------------------------------------|----------------------------------------------|---------------|
| 2G3S Green Group                                        | Linda Whitebread                     | greengroupssss@gmail.com                     | 843438        |
| Badminton (Little Shelford)                             | James Newman                         | james@jamesnewman.org                        | 843272        |
| Bowling Club                                            | Alan Edwards                         | alanedwards505@gmail.com                     | 666965        |
| Brownies, Guides, Rainbows                              | Lisa MacGregor                       | shelforddistrict@gmail.com                   | 843021        |
| Bunch – Feast                                           | Duncan Grey                          | dsg@post.com                                 | 842191        |
| Carpet Bowls                                            | Philip Seekings                      | phil.seekings@yahoo.co.uk                    | 843416        |
| Citizens Advice Bureau                                  | Cambridge                            |                                              | 0344 848 7979 |
| Community Association<br>Memorial Hall bookings:        | Sheila Tilbury-Davis                 | tilburydavis.sheila@gmail.com                | 844384        |
| Country Market                                          | Dorothy Doel                         | dorothy@woodlandsroad.plus.com               | 843946        |
| Cricket Club                                            | Peter Ede                            | peter.ede@ntlworld.com                       | 01223 510662  |
| Football Club                                           | Chris Gethins                        | Chris.Gethins@z-tech.co.uk                   | 07980 383303  |
| Free Church                                             | Maxine Du Plessis                    | administrator@shelfordfreechurch.org.uk      | 842181        |
| Friends of Shelford Library                             | Daphne Sulston                       | dsulston@googlemail.com                      | 842248        |
| Granta Medical Practices                                |                                      | capccg.Covid19.gmp@nhs.net                   | 0300 234 5555 |
| Great Shelford Friendship Club                          | Cheryl Mynott                        | cherylmynott@gmail.com                       | 845435        |
| Great Shelford Online                                   | David Martin                         | www.greatshelfordonline davidm1961@gmail.com | 845995        |
| Mobile Warden Scheme                                    | Claire Smith (Warden)                | saurus1960@gmail.com                         | 07811 676991  |
|                                                         | Jenny David (Chair)                  | jennykmf@yahoo.co.uk                         | 845367        |
| Parish Church Bell-ringers                              | Ann Seaman                           | juliet.a.seaman@outlook.com                  | 504682        |
| Parish Church Community Room                            | Mary Lester                          | lestermh_uk@yahoo.co.uk                      | 842411        |
| Parish Church Friends                                   | Bob Doel                             | bobdoel@woodlandsroad.plus.com               | 843946        |
| Parish Church Sunday Club                               | Gillian Pett                         | gillian.pett29@gmail.com                     | 843278        |
| Parish Churchwardens                                    | Simon White                          | churchwarden@stmarygreatshelford.org         | 07984 451305  |
|                                                         | Joanne Staines                       | churchwarden@stmarygreatshelford.org         | 07790 415732  |
| Parochial Charities                                     | Mary Lester (Clerk to the Trustees)  | lestermh_uk@yahoo.co.uk                      | 842411        |
| Police                                                  | Non-emergency number                 |                                              | 101           |
| Rainbow Pre-School                                      | Alison Tomlin                        |                                              | 07985 216603  |
| Royal British Legion                                    | Mark Chennells                       | mdchennells@btinternet.com                   | 891817        |
| Rugby Club                                              | Secretary                            | secretary@shelfordrugby.co.uk                | 843357        |
| Sawston Sports Centre                                   | Sawston Village College              | info@sawstonsports.com                       | 712555        |
| Beavers, Cubs and Scouts                                |                                      | contact@sandsscouts.org.uk                   |               |
| Shelford & Stapleford Strikers                          | Douglas White                        | douglas.white2@ntlworld.com                  | 561753        |
| Shelford Primary School                                 | Chris Grey (Headteacher)             | office@shelford.cambs.sch.uk                 | 843107        |
| Shelford Spokes Cycling Club                            | Brian Connellan                      | brian.connellan@eastyoke.com                 | 845382        |
| Shelford Support Group<br>(transport to hospital, etc.) | General enquiries: Gillian Northmore | shelfordsupport@googlemail.com               | 504542        |
|                                                         | John Dibnah 842054                   | Carol Bard                                   | 668157        |
|                                                         | Rosie Cranmer 513572                 | Marjorie Smith                               | 564922        |
| Stapleford Choral Society                               | Adam Pounds                          | adampounds54@btinternet.com                  | 07804 308042  |
| Tennis Club                                             | Sarah Richards                       | secretary@gstc.org.uk                        |               |
| The Arts Society South Cambs                            | Frances Clifford                     | frances.clifford@ntlworld.com                | 842551        |
| Twinning Association                                    | Penny Pearl                          | penny.pearl@btinternet.com                   | 842483        |
| U3A (Sawston Branch)                                    | Derek Cupit                          |                                              | 871527        |
| WI                                                      | Vanda Butler (Secretary)             | vanda.butler@googlemail.com                  | 561053        |
| Youth Initiative                                        | Zac Britton                          | zac.britton@ssyi.club                        | 07599 024210  |



# **GREAT SHELFORD JUBILEE CELEBRATIONS**

**Sunday 5th June 2022**

**12noon - 3pm**

**Great Shelford Recreation Ground**

**Join us to celebrate the Queen's  
Platinum Jubilee with:**



**Bring your own picnic**

**Street Games**

**Refreshments**

**Jubilee Trail\***

**...and more...**



\*available to complete in the week before the event

**[https://www.greatshelfordparishcouncil.gov.  
uk/council\\_events/platinum-jubilee-event/](https://www.greatshelfordparishcouncil.gov.uk/council_events/platinum-jubilee-event/)**