

# Great Shelford VILLAGE NEWS

EST 1999

SEPTEMBER 2021

PRICE: 40p



Now you see it, now you don't! Barley House in Station Road has been demolished to make way for the building of a new care home

Photos by Duncan Grey

***Is Great Shelford heading back to normal?***

***Shelford Covid Support Group ends***

***SSYI Big Breakfast returns***

***Full opening hours at Library resumed***

***Country Market now open from 9am***

<b>CONTENTS</b>			
Parish Council News	1	Great Shelford Postcard No 3	23
Parish Council Meetings	2	Editorial Committee Note	23
Planning	2	Railway Photograph	25
No 31 Bus	3	WI	25
Next issue of the <i>Village News</i>	3	2G3S	27
Anthony Browne MP	5	Brian Jeffs' Memorial Service	29
Country Market	7	Old News	29
Thank you to Helen Harwood	7	Tennis Club	31
Covid Support Group Ends	8	Cambridge Flower Club	31
Granta Medical Practices	11	Playscape	32
EastFest2021	11	Film Evening	34
School News	13	New Local Business – Yoga	34
Free Church	15	Cricket	36
Parish Church	16	Library	36
Badminton	19	What's On	38
SSYI Big Breakfast	19	How to Contact the <i>Village News</i>	40
Diary, Bins, Post and Library	20	Rainfall	40
Reader's Letter	20	Local Organisations	
Little Shelford Weekend	21		

GREAT SHELFORD PARISH COUNCIL					
CHAIR	Malcolm Watson	844901	DEPUTY	Gregory Price	07986 217852
			CHAIRS	John Stanton	07789 830407
CHAIRS OF SUB-COMMITTEES					
Planning	Barbara Kettel	843920	Highways	Barrie Ashurst	07803 001985
Pavilion & Recreation	Malcolm Watson	844901	Cemetery & Allotments	Gregory Price	07986 217852
MEMBERS					
Paula Arnold	07831 351911	Lyn Disley	845955	Ifthinan Shareef	07900 621911
Pete Basset	07540 368562	Peter Fane	07802 256861	John Stanton	07789 830407
Peter Brown	07740 503240	Angela Niblett	560225	Simon Talbott	847068
CLERK	Libby White	clerk@greatshelfordparishcouncil.gov.uk			616622
To email Parish Councillors, use:      firstname.surname@greatshelfordparishcouncil.gov.uk					
DISTRICT COUNCILLORS		Peter Fane	07802 256861	Nick Sample	07706 990833
COUNTY COUNCILLORS		Brian Milnes	07971 88611	Maria King	07764 609061

**NOTE FROM THE GSVN**

This is the first of new format updates that the Great Shelford Parish Council has proposed to replace the summary of the minutes of the Parish Council Meetings. Please let us know what you think by contacting the *Village News*. Full details of how to contact us are at the back of this issue. We look forward to your comments which we will, of course, share with the Parish Council.

**GREAT SHELFORD PARISH COUNCIL  
AUGUST NEWS**

As summer starts to wind down and autumn approaches, your Parish Council is looking at new ways to communicate with you. We will not be summarising the minutes of meetings in the Village News but will try and update you with more current news of what your Parish Council has been doing. Minutes remain available on the council website ([greatshelfordparishcouncil.gov.uk](http://greatshelfordparishcouncil.gov.uk)), but if you are struggling for access please contact our Clerk who will be able to help.

On the subject of the Parish Clerk, we extend a very warm welcome to Libby White as our new Clerk having taken over from Mike Winter, who left us in June having moved out of the area. We thank Mike for everything he has done for the parish as Parish Clerk and as a Councillor and wish him well for the future. Libby is a qualified Clerk bringing with her eight years' experience in the local government sector. She is also a trainer of Clerks and Councillors working for Cambridgeshire & Peterborough Local Association of Councils (CAPLAC). In addition, she is also working towards her Community Governance degree (she should be finishing in November 2022) and we hope you will support her in her role as she helps us to look after our wonderful village with so much happening here.

We have received some reports of areas where it is difficult to pass properties where hedges, vegetation, etc. is overhanging the highway and footpaths. Please could we ask that property owners check any hedges and trees along their garden boundaries with the public highway/footpath? It is a property owners' responsibility to ensure that vegetation does not overhang or restrict access along a footpath. If you have any questions please contact Libby via email [clerk@greatshelfordparishcouncil.gov.uk](mailto:clerk@greatshelfordparishcouncil.gov.uk).

Our Village Meeting was postponed earlier this year due to the pandemic. We are looking to hold it later in the year, date to be confirmed, and hope to have Anthony Browne MP in attendance. As ever we will keep the website, and

Facebook, updated with news so please keep watching these for relevant information.

Thank you for reading our first ‘news’ and don’t forget to contact us should you have any relevant concerns. We do have a new telephone number: 01223 61 66 22 and Libby will be available to help during office hours (please leave a message outside of these times or email). Councillors also have emails too, details of which can be found on the website. If you do email a Councillor we ask that you please copy in Libby too.

*Malcolm Watson, Chairman*

### PARISH COUNCIL MEETINGS IN SEPTEMBER

Planning Committee	6 September	7pm	Sports Pavilion
Parish Council Meeting	15 September	7pm	Sports Pavilion
Planning Committee	20 September	7pm	Sports Pavilion
Village Meeting	To be confirmed		Memorial Hall

Meetings may be adjourned for up to 10 minutes when the public can ask questions and put forward points or view related to business on the agenda.

### PLANNING APPLICATIONS PARISH COUNCIL COMMENTS

21/02390/HFUL 21/02391/LBC	26 Maris Green	Demolition and replacement of an outbuilding in the curtilage of a Grade 2 listed building.
The Parish Council has recommended support for this application but does note the comments made by the conservation team at SCDC in respect to the roof lights and agree that these should be reviewed. Cllrs also wanted to know whether a business was going to be run from the property and queried whether change of use is required.		
21/02449/HFUL	3 Poplar Close	Single storey side extension and roof extension with rear box dormer and front roof lights.
The Parish Council has recommended support for this application as it is in keeping with the redevelopment of the neighbouring property.		
21/02449/HFUL	235 Hinton Way	Single and two storey rear extension and single storey side extension (resubmission).
The Parish Council wish to draw the planning authority’s attention to their recommendation in the original planning application (S/3345/18/FL) in 2018, in which the council expressed concerns due to the property being in the Green Belt, and the significant increase in its size. Councillors would ask that a Planning Officer visit the property, especially in light of the concerns raised by a neighbour.		

21/01800/HFUL	6 Marfleet Close	Installation of play equipment.
The Parish Council has no comment on this application.		
21/03035/TWA	West Anglia Mainline adjacent to the Cambridge Biomedical Campus	Construction and operation of a new two storey, four platform station and associated works to the rail infrastructure at Shepreth Branch Junction.
The Parish Council reiterated their concerns over the potential impact the temporary roadway (for construction traffic) will have on an ancient monument. With this in mind, Councillors have requested sight of the Construction Transport Plan for Granhams Road and Addenbrookes Road.		
21/02881/HFUL	29 Coppice Avenue	Single storey garage extension to existing annexe, re-roofing, windows and cladding of annexe and new sliding front gates.
The Parish Council has recommended this application for support and reiterate the comments made in the original submission from May 2021 that the landscaping introduces more lawn and planting and the new gates have a good visibility splay and are pulled onto the land to allow a car to leave the highway safely. Councillors appreciate the revised plans which mean a reduction in development size thus limiting damage to the roots of the trees.		

## NO 31 BUS

From 16 August some journeys on the 31 bus service are extended through onto the 114 service from Addenbrookes Hospital which covers Sainsbury's, The Beehive and Grafton Centres and Drummer Street.

These are the 10.06, 11.36 and 13.06 from Chaston Road bus stop. The 31 timetable remains the same. There is no need to change bus at Addenbrookes as the same bus continues onto the 114 route. Full details of timetables are available on [www.a2bbusandcoach.com/bus-timetable](http://www.a2bbusandcoach.com/bus-timetable). Please note that this is the Monday to Friday service only, not Saturday.

*John Wakefield*

## OCTOBER ISSUE OF THE VILLAGE NEWS

The deadline for copy for the next issue of the *Great Shelford Village News* is Friday 10 September and it should be available on Friday 24 September, with subscribed copies delivered shortly thereafter.

## TRADITIONAL RESTORATIONS

**A FRIENDLY LOCAL SERVICE  
FOR ALL TYPES OF ANTIQUE &  
MODERN FURNITURE**

A complete restoration service:

- All types of furniture repairs
- Traditional French polishing
- Hard-wearing, high-quality lacquer finishes
- A comprehensive re-upholstery service



Over 20 years working in the local area  
Free estimates & advice given on all work

**JONATHAN PORTER**  
5 BABRAHAM ROAD, SAWSTON, CAMBRIDGE CB22 3DQ  
TEL 01223 835515 MOB 07932 611184

## STEVE the PLUMBER

Steve the Plumber  
is a local plumber  
with a friendly,  
helpful and reliable  
service.

Small or larger jobs  
undertaken.  
Competitive rates.

Please call 07803922517

or email  
steve\_the\_plumber@me.com



Paul J Neaves

### Neaves Electrical Ltd

*All aspects of electrical  
work undertaken -  
installation, maintenance  
& repairs*

[www.neaveselectrical.co.uk](http://www.neaveselectrical.co.uk)

Telephone:

01223 290956

Mobile:

07702 280687

Email:

[paul@neaveselectrical.co.uk](mailto:paul@neaveselectrical.co.uk)

### FREE Estimates & Advice



- All Driveways & Block Paving
- Site & Garden Clearance
- Driveway Cleaning & Sealing
- Fencing, Trellis Work & Decking
- Patios & Paths
- Turfing & Seeding
- Concrete Crushing
- Grab Hire & Digger Hire

[amsbuildingandlandscaping.co.uk](http://amsbuildingandlandscaping.co.uk)

OFFICE: 01638 721 893 | SITE: 07789 261 266

## ANGLIA TREE CARE



*A O'Connor*

Tel: 01223 424454

23 King Street  
Cambridge CB1 1LH

*Tree surgery  
Stump grinding  
Hedge maintenance  
Fully qualified & insured*

*All work carried out to British  
Standard BS3998  
Member of the Guild of  
Master Craftsmen*



[www.angliatreecare.co.uk](http://www.angliatreecare.co.uk) Email: [info@angliatreecare.co.uk](mailto:info@angliatreecare.co.uk)

## ANTHONY BROWNE MP



Unfortunately, my tenure as the Member of Parliament for South Cambridgeshire (much like everything else in the previous eighteen months) has been dominated by Coronavirus. Now that restrictions are over, I very much look forward to getting out and about in the constituency.

At the time of writing, I am very glad to say that, in South Cambridgeshire, 87% have had their first dose of a coronavirus vaccine and 75% their second. Indeed, I am very proud of the contributions our area had made in the fight against Covid-19 be it the researchers at AstraZeneca, the genome sequencers (who do almost as much genome sequencing for Coronavirus as is done across the rest of the world) or those who have assiduously followed the rules and taken up the vaccine.

As many of you will be aware, I recently wrote to the Greater Cambridge Partnership (GCP) to state my opposition to the proposed CEST Busway. I do not believe that it serves the needs of people in Great Shelford or



across South Cambridgeshire, nor does it offer value for money for the taxpayer. Unfortunately, the GCP has decided to press on with the scheme regardless. Rest assured, I will continue to pursue other avenues to ensure that my constituents are heard on this important matter.

I have been working with my parliamentary colleagues in Cambridgeshire to lobby the Secretary of State for Education for additional funding for local schools. I am delighted our efforts have resulted in substantial changes. Locally, the Great Shelford Primary school will see an increase to £4284 per pupil. I will certainly be pushing for additional funding for our schools in conversations with the Minister for Education. In recent months I have enjoyed being able to visit schools again and I hope to visit the school soon.

*Anthony Browne*  
[www.anthonybrowne.org/](http://www.anthonybrowne.org/)

# GATWARD & SONS

BUILDING ON EXPERIENCE  
CARPENTRY, JOINERY & BUILDING CONTRACTORS

☎ 01223 570 143

📞 07525 494 478

✉ contact@gatwardandsons.co.uk

BASED IN STAPLEFORD

EXTENSIONS  
CONVERSIONS  
RENOVATIONS  
ALTERATIONS

## Rainbow Pre-school

A unique place to play and learn in Shelford



A caring community pre-school  
in Shelford for 2-4 year olds  
Open Mon-Fri from 9am to 3pm  
(term-time)

For more information visit  
[www.rainbowsheford.co.uk](http://www.rainbowsheford.co.uk)  
or contact  
[enquiries@rainbowsheford.co.uk](mailto:enquiries@rainbowsheford.co.uk)

Tel: 07985 216603

Manager: Allison Tomlin

## Thomas J Shearing

Furniture Restoration and Traditional Upholstery

Comprehensive re-upholstery service  
Vast range of furnishing fabrics  
Antique and modern furniture restored

Picture Framers and Restorers

French polishing and other finishes available  
Bespoke mirrors made to order

Serving Great Shelford and Cambridgeshire  
Tel: 01223 837150 Email: [shearing@mail.com](mailto:shearing@mail.com)

**Panther spotted  
in your village!**  
It just got cheaper

**Panther territory just got bigger and now includes your village!** Cambridge's largest and best loved taxi company has launched a brand new, reduced rate village taxi service. Introducing fares that are fair in your village. All journeys on the meter\* means no fixed prices. You just pay for your journey door to door – and not a penny more.



01223 715 715

[www.panther taxis.co.uk](http://www.panther taxis.co.uk)

\*All fares for saloon car bookings on meter within or between villages listed. Prices for 5-8 seaters available on request. See [www.panther taxis.co.uk](http://www.panther taxis.co.uk) for details.

MILTON • HISTON • IMPINGTON • GIRTON • MADINGLEY • COTON • BARTON • GRANTCHESTER  
TRUMPINGTON • THE SHELFORDS • STAPLEFORD • CHERRY HINTON • FULBOURN  
TEVERSHAM • STOW CUM GUY • FEN DITTON • HORNINGSEA

## CHIMNEY SWEEP

**J. L. WIGHT**  
Guild of Master  
Chimney Sweeps

Fully Insured



Advice given / problems solved

Certificates issued  
**01954 253315**  
[www.camsweep.co.uk](http://www.camsweep.co.uk)

9 Cow Lane, Rampton



## COUNTRY MARKET



COVID regulations are now being eased. We do thank our customers for supporting us through a difficult period and for their patience in waiting to come in and signing our 'register'. It's time to move on and we're looking forward to the stalls being better presented and a market where folk can stop, browse and chat.

Our regular customers will remember we always used to open at 8.30am. After hearing views from some of you and discussion amongst our producers we have had another re-think! As from 1 September we will be opening at 9am. So, come and spot the differences including the coffee! Closing time will remain at 11.30am.

There is always plenty to see in the market and we are back to our full range of traditional and new crafts, home baking, preserves and the garden section. The weeks pass by so quickly. The early garden flowers provided a fine splash of colour and now the more autumnal flowers are coming along together with the new season salad crops and vegetables: tomatoes, cucumbers, lettuces, beans, courgettes and more. All our produce is home grown and freshly picked.

Do remember that we are geared for local deliveries if you are unable to come into the market in person. To order, please telephone me on 01223 843946 or email [dorothy@woodlandsroad.plus.com](mailto:dorothy@woodlandsroad.plus.com).

Follow us on Facebook at [www.facebook.com/gtshelfordmarket/](https://www.facebook.com/gtshelfordmarket/) and if you would like to join us as a producer then come and talk to us. We are a social co-operative market and not individual stall holders so you won't be filling your own table. Small amounts of produce will always be welcome. Remember acorns can grow into oak trees!

We always look forward to seeing you on Wednesdays from 9–11.30am in the Memorial Hall.

*Dorothy Doel*

### THANK YOU TO HELEN HARWOOD

The Editorial Team would like to thank Helen Harwood for her Coronavirus Diary over the last year or so. We were pleased to publish it in the Village News, but equally pleased that (hopefully) we are beyond needing it now that life is returning to normal. Thank you Helen.

## GREAT SHELFORD COVID SUPPORT GROUP COMES TO AN END

After more than 500 days the Great Shelford COVID support group has now come to a formal end.

Some people have asked why the group is coming to an end when cases are still high. During the first wave of infections in May 2020 we were supporting over 200 people in the village. Since that time, the number of residents receiving regular support from us has slowly declined and has been low even during the third lockdown when cases were at their highest. I see this as a really positive sign, showing that most people were able to access the support they needed, either through pre-existing or new networks.

Over the last 16 months we've seen so much goodwill through the network and I benefited from getting a delivery of yeast when it was in such short supply! In the wider group we had volunteers starting residents' flat car batteries, organising socially distanced parties, picking berries and I can't count the number of prescriptions we've collected. We also delivered 70 Christmas meals and worked with Eagle Analysis and the Parochial Charity to collect old laptops for recycling and donation to local children for home schooling.

However, there's one story that stands out for me. I came across somebody who didn't have any food in their house, or any money. We were able to organise a same-day emergency food parcel from the council and then put them in touch with the John Huntingdon charity and the Foodbank who could properly assess their needs and provide access to the right ongoing help. This is just one example where there is as much joy for the giver as the receiver.

Anyone receiving regular help from our network has now transitioned onto more sustainable support. All volunteers have been provided with a volunteer guide which will help signpost any future requests for help towards one of the more permanent groups in Shelford and our local area. It is also important to note that any COVID-based volunteering from now on is on a strictly personal and informal basis.

For me, COVID has highlighted our need to be in community with one another. Zoom can only go so far. My only hope is that the connections made through the COVID support group will survive beyond the pandemic and that we'll keep looking out for each other as we go forward.

*Chris Smith*

**Editorial Team Note:** We are sure everyone will join us in thanking Chris and the team at the Shelford Covid Support Group for the fantastic job they did at such a difficult time. Thank you.

# GREAT SHELFORD COVID SUPPORT GROUP

**SINCE ITS LAUNCH...**



**OVER  
200**

**PEOPLE  
SUPPORTED**

**78**

**VOLUNTEERS**



**70**

**CHRISTMAS MEALS  
DELIVERED**

**146**

**LAPTOPS DONATED**

...and many more hours of hard graft by Mike Nettleton



**507**

**DAYS  
IN OPERATION**

**THANK YOU TO EVERYONE  
WHO HAS CONTRIBUTED**



Thinking of selling or  
letting your property?

Our Great Shelford  
team can help!

2019 ★★★★★ feefo<sup>co</sup>  
Gold Trusted Service Award

Call: 01223 800860  
or Email: shelford@rah.co.uk

## LAY ELECTRICAL Sales and Repairs

*Washing  
Machines,  
Vacuum  
Cleaners,  
TV, Video,  
etc.*



66 High Street  
Great Shelford  
01223 842488



## TIM PHILLIPS & Co Ltd Accountants

Independent, specialist service for:

**Small Business**

**Self Assessment**

**Personal Taxation**

FREE initial consultation – NO OBLIGATION

Easy to find us – map on website. FREE PARKING

**Copley Hill Business Park**

*Off A1307 between Wandlebury and Babraham*

**01223 830044**

info@TPaccounts.co.uk TPaccounts.co.uk

# GRANTA Medical Practices

## Flu Clinics

Are you eligible for a free NHS flu vaccine? If yes, but you haven't yet booked one, don't delay. Telephone us on 0300 234 5555 to arrange your appointment.

We are holding clinics on the following dates:

<b>Saturday 11 September</b>	Sawston, Linton and <b>Great Shelford</b>
Sunday 12 September	Royston
Saturday 9 October	Sawston, Linton and Barley
<b>Saturday 23 October</b>	<b>Great Shelford</b>

As a Granta patient, you have a choice of which venue you attend, on the date most convenient for you.

If you have any queries, please don't hesitate to telephone or email me.

*Sandra East*  
*sandra.east@nhs.net*

## EASTFEST2021



Granta Medical Practices are proud to support EastFest2021, a charity music festival being held on **Saturday 18 September**, raising awareness of mental health and suicide. Set in the grounds of

The Coach House Hotel at Flint Cross (CB22 7PN), there will be live music, a beer festival, food and side stalls, with B&B rooms and camping available. All proceeds are going to the Zero Suicide Alliance, a charity dedicated to raising awareness of suicide by offering free online training for everyone and bringing NHS trusts and organisations together, with the joint aim of reducing suicide nationwide.

For further information about EastFest2021 and tickets visit [www.eastfest.live](http://www.eastfest.live).

For further information about the Zero Suicide Alliance and to access free online training go to [www.zerosuicidealliance.com](http://www.zerosuicidealliance.com). Remember that whatever you are going through, a Samaritan will face it with you. They are available 24 hours a day, 365 days a year. Call free on 116 123.

# JO ALEXANDER

Reclaimed Teak, Concrete &  
All Weather Wicker furniture for your garden

01954 267857  
[www.joalexander.co.uk](http://www.joalexander.co.uk)



## Chiropodist David Levy MSSCh MBChA

Home visiting practice

Saturday morning clinic  
held at  
Billson Opticians,  
Sawston

Mobile: 07966 136972  
Home: 01223 834634

## green|weigh

minimal wasteshop

*Eco-friendly, ethically  
sourced food refills &  
other products*

**60 High Street  
Sawston CB22 3BG**

Email:  
[hello@greenweighshop.co.uk](mailto:hello@greenweighshop.co.uk)

Facebook/Instagram:  
[@greenweighshop](https://www.facebook.com/greenweighshop)

Website:  
[www.greenweighshop.co.uk](http://www.greenweighshop.co.uk)

Tues-Fri: 9am to 5pm  
Sat: 9am to 2.30pm

## sawstoncarpet andflooringltd

Carpets - Sisal - Vinyl  
Wood - Laminate  
Karndean - Amtico - Moduleo

**Mon-Fri: 9am-5pm  
Sat: 9am-4pm**

Unit 34, Eastern Counties Leather Site,  
London Road, Pampisford CB22 3EE  
Tel 01223 837005

[sawstoncarpetsandflooring@gmail.com](mailto:sawstoncarpetsandflooring@gmail.com)  
[www.sawstoncarpetsandflooring.com](http://www.sawstoncarpetsandflooring.com)



### Square and Compasses

Take away and delivery service only - see our  
Facebook page & [www.greatshelfordpubs.co.uk](http://www.greatshelfordpubs.co.uk)  
5pm-8.30pm Tues-Sat & 12 noon-3pm Sun  
Tel: 01223 843273

### The Plough

The pub is currently closed but we are  
looking forward to opening as soon as we can.  
Tel: 01223 847986



## SCHOOL NEWS

As ever, September marks the start of a new term with our wonderful pupils and staff at Great and Little Shelford Primary School. As we look ahead to the start of a new year we can reflect on an extraordinary 2020–21 academic year, and give thanks to everyone for making such a success of the year.

Last year's Year 6 pupils are moving to pastures new following their fantastic filmed performance of 'The Tempest'. We sent them on their way with a beautiful service at St Mary's, followed by a procession in front of the whole school complete with confetti, cake and a bible each. We are all thinking of them and wishing them well as they make their next steps beyond Shelford.

Hot on the heels of their Pirate Day, with costumes, plank walking and scavenger hunt, Year 2 pupils had a chance to enjoy the warm weather with a fun-filled trip to Hunstanton as part of their topic on The Seaside, including a visit to the Life Boat Station. Reception pupils enjoyed tackling a fantastic KAPLA Workshop with hands on interactive problem solving puzzles, whilst Year 1 pupils held a Talent Show, delighting their fellow pupils with acts ranging from animal facts to hulahooping to singing and dancing! We also awarded the annual Philippa Pearce Award for our most improved readers and we were pleased that Sally Christie, Philippa Pearce's daughter, was able to join us for the ceremony. We are delighted to congratulate our Head Girl and Head Boy for 2021–22: these are Gwendolen and Eddie, with Erica and Reuben, ably taking on the deputy positions.

For the second year running the PTA ran a hugely successful virtual camp out with over 60 campers, which raised over £400 towards much needed resources. There were goodies and bedtime camp stories recorded by Mr Grey – Roald Dahl's Revolting Rhymes are a definite favourite! Thank you to everyone who participated.

Finally, thank you so much to everyone who has donated to our PTA subject fundraising campaign. We have raised just over half of our £4,000 target so far. This will make a huge difference to the resources we can provide to enhance the children's learning experience in school – read more here:

[www.justgiving.com/crowdfunding/shelford-school-equipment](http://www.justgiving.com/crowdfunding/shelford-school-equipment) or buy books from our wish list:

[www.amazon.co.uk/hz/wishlist/ls/2WSDF7L9G47UW?ref\\_=wl\\_share](http://www.amazon.co.uk/hz/wishlist/ls/2WSDF7L9G47UW?ref_=wl_share).

Community spirit is a cornerstone of our school ethos and we hope to reintroduce some events alongside the community when we can. Until then, we would like to say a huge thank you for your support for the school in 2020–21.

*Christopher Hallebro, Foundation Governor*

**NICHOLAS  
CLIFFE & CO  
CHARTERED  
ACCOUNTANTS**

*Business Advisers  
for  
South Cambridgeshire*

**Accounts, Audit  
VAT & Tax Advice.  
WE WANT TO  
HELP YOUR  
BUSINESS GROW.**

**Free initial meeting  
and business  
'health check'.  
Realistic fees.**

Mill House, Mill Court,  
Great Shelford  
Tel: 01223 471567

[www.nicholas-cliffe.co.uk](http://www.nicholas-cliffe.co.uk)

**JASON KIRBY**  
*Professional Painting  
& Decorating Ltd*

*A Professional Service  
from Start to Finish*

Tel: 01954 211775  
[www.jasonkirbyltd.co.uk](http://www.jasonkirbyltd.co.uk)



All aspects of  
Tree surgery &  
Woodland management  
**Free estimates**

- Crown thinning and lifting
- Sectional dismantles
- Crown reductions
- Dead wooding
- Hedge trimming
- Land & garden clearance
- Stump grinding
- Felling

**Fully Qualified  
& Insured**

**07743 406 569 | 01763 208 361** City & Guilds  
**[www.shelfordtreeservice.co.uk](http://www.shelfordtreeservice.co.uk)** NPTC

## Great Shelford Parochial Charities

Supporting people in our village

### Grants

We welcome applications for small grants to  
support local people and good causes

### Housing

We provide 32 almshouse homes for Great  
Shelford people and are about to build 21 more

### Allotments

Available to rent for a nominal annual fee -  
we are also planting a community orchard

### Donations

Are most welcome via our website

Subscribe to our newsletter / mailing list

[www.gspc.org.uk](http://www.gspc.org.uk) [enquiries@gspc.org.uk](mailto:enquiries@gspc.org.uk) 01223 842411





## Great Shelford Free Church

I spend a lot of time in my garden, especially recently; as I type I am under ‘house arrest’, following a ping on my tele‘phone. I have been fascinated by the success rate, or otherwise, of seeds; some larkspur and cornflowers that were sown last autumn are flowering beautifully, while others, Californian poppies and clarkia, sown in the spring have not shown up at all. Love-in-the-mist, a prolific self seeder, is everywhere without my doing anything about it, except sow one packet many years ago.

Hope and disappointment: the twin emotions of many turbulent months. Some of our hopes, for a ‘new different’, are beginning to take shape as we can once more meet freely with friends, colleagues and loved ones without constantly having to do a head count. We can sing in church at last, albeit through masks, and tentatively hug those who wish to be hugged. Yet we have also grown accustomed to planning holidays, birthday parties, family gatherings and childcare only to find them cancelled and our plans in disarray. Weddings have been called off, operations postponed and Christmas plans disintegrated at the last minute. Like seeds planted in hope and optimism, they never materialised.

We don’t know what lies ahead for us, even without a pandemic. A freak accident, the loss of a job, a terminal illness, can turn all our plans upside down, yet resentment does not make things better. The apostle Paul, writing from his unplanned prison chains, speaks of his joy. He exhorts his fellow believers to not be anxious, but thankful and promises God’s peace in return. He encourages them not to grumble, but to generously look out for each other. Paul had learnt the secret of letting go of any perceived entitlement to dictate his situation:

*I’ve learned to be content whatever my circumstances. I’m just as happy with little as with much, with much as with little. I’ve found the recipe for being happy whether full or hungry, hands full or empty. Whatever I have, wherever I am, I can make it through anything in the One who makes me who I am.* Philippians 4:11–13.

Joy, peace, freedom from anxiety – maybe these are the plants that I have never sown at all, yet have appeared nonetheless. A random day lily next to the fence, a couple of sunflowers in the middle of a border and a stunning variety of ornamental poppies, all over the place. I imagine the birds or the wind are the secret hand at work here, as the breeze of God’s Holy Spirit drops his gifts into my life.

*Liz Jenkin, Elder*

## GREAT SHELFORD PARISH CHURCH

[www.stmarysgreatshelford.org](http://www.stmarysgreatshelford.org)

A very warm welcome to your historic parish church – please call in and enjoy the sacred space.

### Covid Precautions

The PCC has decided to keep in place our protocols for Sunday services for the time being (face masks and social distancing). Although we have no power to enforce this, we hope that you will agree to cooperate for the sake of others. It is clear that we may be in the midst of a ‘third wave’ of Covid, so we still need to exercise caution.

### Harvest Festival and Gift Day – Sunday 3 October

A highlight of the autumn is always Harvest Festival and there will be a chance to support local good causes and those in need as part of the celebrations. The weekend also includes an annual **Gift Day**, where we encourage generous financial giving to support the work of the parish church. We are making a special appeal this year in order to help continue to fund work across the community. Please consider if you could help – we do need to widen our giving support and would welcome your assistance. Helping to support a full time Vicar so that they have the resources necessary to make an impact is a real gift to the wider community. Please respond to our appeal if you can. This is especially important this year as we have suffered reduced income during the suspension of public services.

### Harvest Lunch

We are planning to hold a Harvest Lunch this year on Sunday 3 October. It will be held in the Community Room and full details will be made available on our website and in the weekly newsletter.

**Cambridge City Foodbank:** Thank you to everyone who has continued to support the Foodbank in the last few months. It is really important that we keep up efforts to support the Foodbank as the effects of Covid continue. Our monthly collection will be made on **Sunday 5 September**. All donations are appreciated. A list of the foods most urgently needed can be found at the back of the church or on the Foodbank website. You can also donate money directly to the Foodbank if you prefer: [www.cambridgecity.foodbank.org.uk](http://www.cambridgecity.foodbank.org.uk).



## **Cambridgeshire Historic Churches Trust – Ride, Drive or Stride Day Returns – Saturday 11 September**

This is a sponsored event in aid of the Trust which gives grants to historic churches across the county. The idea is to visit as many open churches in the day as possible. It's an enjoyable day out which helps to assist churches like our own. Details can be found on their website: [www.camhct.uk](http://www.camhct.uk).

## **St Mary's Sunday Club**

Sunday Club begins again on 12 September (although it is usually on the first Sunday of every month) during the 10am service, with a story and activities for children of all ages. Most other Sundays there is an activity for children during the service. For details email [gillian.pett29@gmail.com](mailto:gillian.pett29@gmail.com). Helpers are welcome!

**Wednesday 9.30am Holy Communion service** is currently still suspended

## **From the Registers**

Baptism:	29 August	Oliver Maxwell and Oliver Archdeacon
Marriage	21 August	Kieran and Charlotte Eusden
Funeral	18 August	Mary Marsh

## **Regular Services**

Sunday:	8am	Holy Communion (BCP 1662)
	10am	Parish Communion, our main Sunday service
		Evening Prayer (BCP Evensong in church on the first
	6.30pm	Sunday of the month); remaining Sundays 'live' by Zoom.
		(A Zoom link is circulated before the service – please contact if you would like a copy of the code.)

## **For further information about Great Shelford Parish Church**

visit our website: [www.stmarysgreatshelford.org](http://www.stmarysgreatshelford.org)

Vicar: The Revd. Canon Simon Talbott 01223 847068 or 0705 0042616 or email [vicar@stmarysgreatshelford.org](mailto:vicar@stmarysgreatshelford.org)

Parish Administrator: Katharin Page 07710 518220 or email [pagekatharin@gmail.com](mailto:pagekatharin@gmail.com)

St Mary's Great Shelford is a Registered Charity, No. 245456



CHARTERED  
CERTIFIED  
ACCOUNTANTS

**Do you want more control over your business accounts, or  
want to organise your personal tax situation more  
effectively?**

We are a friendly team of qualified accountants who can help you reach the potential of your business and give you expert professional accounting and tax advice using the latest technology to work for you in achieving your goals.

We can deal with all matters relating to business tax and accounting including online bookkeeping, VAT and PAYE matters. Bespoke all-inclusive packages are available from £145 plus VAT monthly.

Private clients can be confident that we will deal efficiently with tax return preparation and all aspects of tax planning.

To arrange an informal chat or a meeting  
please contact us at:

Quern House, Mill Court, Great Shelford, Cambridge, CB22 5LD

T: 01223 506533

E: [hello@day-accountants.com](mailto:hello@day-accountants.com)

W: [www.day-accountants.com](http://www.day-accountants.com)



QUALITY FLOORING SUPPLY,  
INSTALLATION & AFTERCARE

## Specialists in Wood Flooring, Carpets & Vinyl Flooring Solutions

*"We've had a vinyl floor fitted in a loft bedroom. Sam and Nigel were excellent throughout. The whole experience was made very stress free due to their professionalism and the floor looks amazing. I would not hesitate to recommend The Art of Flooring."*

**Juliet Mills, Cambridge**

**01223 755 802**

Please quote Great Shelford Mag

Best of  
**houzz**  
2020  
SERVICE

Best of  
**houzz**  
2020  
DESIGN

141 Milton Road Cambridge CB4 1XE  
[www.ArtOfFlooring.co.uk](http://www.ArtOfFlooring.co.uk)

## SIMON SPARROW CARPENTER AND JOINER

**22 Woollards Lane  
Great Shelford  
Cambridge CB22 5LZ  
Tel: 01223 842380**



## D Hatter The Gas Specialist



**Carbon Monoxide Kills**  
75% of last year's poisonings  
were due to lack of servicing!  
.....

D Hatter, specialist in servicing,  
repairs and installation of  
DOMESTIC gas appliances  
including boilers, fires  
and cookers.  
.....

Improve efficiency, save fuel,  
give your central heating  
system a new lease of life,  
have it POWER FLUSHED.

t: 01223 844866  
m: 07747 444 435  
e: [davidhatter1@aol.com](mailto:davidhatter1@aol.com)  
w: [thegasspecialistltd.co.uk](http://thegasspecialistltd.co.uk)



## BADMINTON

For badminton players who fancy a game with others on a pay and play basis, badminton will start on Thursday 23 September at Little Shelford Memorial Hall from 7.30pm and continue on Thursdays each week. It's a one court facility with high ceilings and a sprung wooden floor, custom built for badminton. £4 per session with shuttles provided, bring your own racquet.

For more details, email James Newman on [james@jamesnewman.org](mailto:james@jamesnewman.org) or telephone 07717 394176 or just turn up!

*Sarah Coppendale*



### **THE BIG BREAKFAST IS BACK Saturday 2 October 8am to 11.30am Little Shelford Memorial Hall**

Our much-missed Big Breakfast is back (subject to late change due to Covid-19 restrictions, but we hope for the best). There will be a variety of breakfast food available from cereals and toast to a traditional cooked 'Full English'.

Live piano music featuring David Adams and newspapers to read. Relax and chat with friends. Meet the SSYI Team and hear about their work while enjoying a great breakfast and good music.

This is raising funds for SSYI, a Christian community based charity providing Youth Clubs and activities for all 11–18 year olds. A minimum donation of £5 towards breakfast costs would be appreciated. A great way to start the day!

More details and offers of help: Polly Stanton  
[polly.stanton@ntlworld.com](mailto:polly.stanton@ntlworld.com)

Keep up to date with details of our events and  
SSYI activities at: [www.ssyi.club](http://www.ssyi.club)

Charity Registration number: 1073490

## DIARY SEPTEMBER

**The COUNTRY MARKET has returned to the Memorial Hall and will be open every Wednesday morning, 9–11.30am. Please note the new start time.**



## BIN COLLECTIONS

Black bins	Tuesdays 7 and 21 September
Blue and green bins	Wednesday 1 and Tuesdays 14 and 28 September



## POST BOXES

Coppice Avenue, Mill Court (Hinton Way), Library, Old Vicarage, Church Street, High Green bus stop, Stonehill Road, Macaulay Ave.  
The latest collection from the Post Office is currently 5pm Monday to Friday, 11.55am Saturday.



## POST OFFICE

The Post Office is at Kash Stores, 35 Hinton Way.  
Open Monday – Friday 9am–4pm, Saturday 9am–12 noon.  
Items that Royal Mail is unable to deliver (too big, signature required, etc) will be returned to the Royal Mail Depot in Clifton Road for collection, or arrangements made for redelivery.



## LIBRARY

The library is open: Monday 3–7pm; Tuesday 10am–1pm and 2–5pm; Wednesday 10am–1pm; Friday 10am–1pm and 2–6pm; Saturday 10am–1pm. It is closed on Thursday and Sunday.

## READER'S LETTER

With regards to the Granta Medical Practice report in *GSVN* August 2021 stating that they are considering a mobile telephone app called Airmid. Do the practice not realise that a large majority of Great Shelford residents/patients don't have smart phones or do apps. What I, and I am sure many others would like to know, is when Granta are going to get back to face to face appointments with their local GP at Great Shelford surgery!

John Wakefield

# ***Little Shelford Village Weekend 2021***

## **Wale Recreation Ground (Instagram: Little.Shelford)**

Please come along and support us. We are raising funds this year to improve our community including the Village School and the Wale Recreation Ground. Please note that all events will be Covid compliant and subject to late cancellation if Government regulations change.

### **Friday 17 September**

#### **Dance and Enjoy (18+ only) 7.30pm for 8pm**

Dancing and disco hits from across the years. Pre-order street food from our famous local vendors, ***Steak & Honour*** and ***Wandering Yak*** and enjoy the licensed bar including a selection of real ales. Tickets £15 per person from Liz Carrothers, email [lizcarrothers@icloud.com](mailto:lizcarrothers@icloud.com) or call on 07808 128037.

### **Saturday 18 September**

#### **Family Fun Village Show and Scarecrow Exhibition**

**Official opening at 1pm by Anthony Browne MP**

Join us for free family fun, from 1–5pm, including the Ark Miniature Farm, guided nature walks, family games, village society stalls, maypole dancing, Parish Council stall and EWR exhibition and many other attractions for young and old. BBQ and real ale bar available all afternoon.

#### **Real Ale and Craft Beer Festival 1–10pm**

Join Barry and Mark from the Navigator in the marquee for an excellent selection of real ale and craft beer all afternoon and evening.

**Hog Roast and live music from 6.30pm.**

### **Sunday 19 September**

#### **All Saints Harvest Celebration 11am**

All ages welcome, there will be songs and celebration for Harvest in the marquee. Non perishable gifts will be collected for Jimmy's night shelter. Join us after the service for tea, coffee, cake and conversation.

#### **Village History Walk 12.15pm**

75 minute walk departing the marquee and including the village pump and All Saints Church. Led by local residents with a flair for history!

#### **Family Picnic 1pm**

Bring your picnic, family and friends for a relaxed late summer afternoon.

For more information, offers of help or to run a stall on Saturday afternoon contact: Jo Boyle: [joboyle780@gmail.com](mailto:joboyle780@gmail.com) or call 07774 843770 or 01223 843984

## BELLE CASA

DOMESTIC CLEANING (UK) LTD Est. 2002

For cleaning, washing, ironing, etc.

A professional service with  
dependable, honest cleaners

Inclusive rate of £13.50 per hour  
(£13.00 for 5 hours or more)

01223 441055

[www.CleanersCambridge.com](http://www.CleanersCambridge.com)



## SOLUTIONS

Ladies' and Gents'  
Hair Salon

Air-conditioned  
44 Woollards Lane  
Great Shelford  
CB22 5LZ

Closed all day Wednesday  
& Sunday

 01223 843844



Mrs Rosemary Rigge  
Grad Dip Phys MCSP Reg. HCPC  
Chartered Physiotherapist

TREATMENT ROOMS:  
26 Mingle Lane, Stapleford,  
Cambridge CB22 5SY

or HOME VISITS

Tel: 01223 844091

Mobile: 07958 708728

Reg. BUPA, PPP, etc.

## DUXFORD BUILDING & LANDSCAPE SERVICES

All work considered from:

- Hard Landscaping
- Brickwork
- Structural Alterations
- Carpentry
- All types of Building Works from Extensions to Conversions



D A Rayment

Home: 01223 837645


Mobile: 07958 774360

Email: [duxfordbuilding@btinternet.com](mailto:duxfordbuilding@btinternet.com)


Web: [www.duxfordbuildingandlandscapes.com](http://www.duxfordbuildingandlandscapes.com)



*Award winning free house & restaurant  
in the heart of the village.*

 01223 503 402

@ [hello@threehorseshoes-pub.com](mailto:hello@threehorseshoes-pub.com)

 [www.threehorseshoes-pub.com](http://www.threehorseshoes-pub.com)

## NB HORTICULTURE & CAMBRIDGE HEDGES

All types of garden work  
& landscaping

Hedge & Shrub Supplier

[www.cambridgehedges.co.uk](http://www.cambridgehedges.co.uk)

Mr N Barber BSc RHS Cert

Consultant Member of the Gardeners Guild

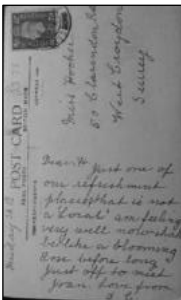
109 Cambridge Road  
Great Shelford, CB22 5JJ

07789 564042

01223 977306



## GREAT SHELFORD POSTCARD NO 3



This lovely building is now a private house, but in 1941 when this was posted to a Miss Hooker in West Croydon, Surrey, it was the Thatched Cottage Tea Room in Tunwells Lane. The back of the postcard reads:

*'Dear H. Just one of our refreshment places that is not a 'Local' am feeling very well now shall be like a blooming rose before long Just off to meet Joan. Love from D.C.(?)'*

*Eric Jacobs*

### NOTE

The *Great Shelford Village News* is published by the Editorial Committee, whose members are delighted to receive the many regular and occasional contributions that make it all possible. The Committee accepts such contributions in good faith, but cannot take responsibility for the accuracy of information contained therein. The views expressed are those of the contributors and do not necessarily reflect those of the Editorial Committee. The Committee, of necessity, reserves the right to amend or reject items, for a variety of reasons. In these cases (unless the changes are minor), every reasonable effort will be made to contact the contributor to obtain agreement.

*Editorial Committee*

**Beach holidays, City breaks, Honeymoons, Weddings abroad, Adventure holidays, Ski, Cruise, Tailormade trips, Flight only, Car hire, Airport hotels and parking and much more...**

## CHERYL HARRADINE

Travel Counsellor

01223 842670

cheryl.harradine@travelcounsellors.com

www.travelcounsellors.co.uk/cheryl.harradine



Travel Counsellors ensures complete financial protection on every booking

travel counsellors



**Good coffee,  
that does good!**

**www.facebook.com/  
caracoffee123**



### Organic veg box delivery

Fresh, seasonal organic vegetables,  
grown for flavour at our award-  
winning family farm in Great  
Abington.



Free local delivery, visit our website  
to order [www.wildco.co.uk](http://www.wildco.co.uk)



Now available Micro Needling & Skin Peels

01223 844700 [waterlilies.org.uk](http://waterlilies.org.uk)

2d Dolphin Way, Off London Road, Stapleford, CB22 5DW



**CAMBRIDGE  
ELECTRICAL**  
services ltd



### Domestic, Commercial, Industrial & Agricultural

For all your electrical installation, inspection & testing  
and repairs, contact us for a free no obligation quotation.

Call: 01223 430 430

Email: [Enquiries@cambridge-electrical.co.uk](mailto:Enquiries@cambridge-electrical.co.uk)

Website: [www.cambridge-electrical.co.uk](http://www.cambridge-electrical.co.uk)

Celebrating over 25 years in business.

## Willow Tree

**All aspects of painting,  
decorating & home  
improvements**

- Exterior & interior painting & decorating
- All gardening needs
- All styles of fencing, etc.

**Contact Dean on**

**01763 232757**

**07906 531518**

## RAILWAY PHOTOGRAPH FROM THE PAST



This photo from sometime in the 1950's shows a 'Sandringham' class loco 61663 waiting at a signal to come onto the main line at Great Shelford from the Haverhill branch line, having worked a train from Colchester. The photograph was taken by the late John Hepburn Scott from the bridge on London Road. The bungalows are in Leeway Avenue and would be No 36, 38 and 40, now hidden behind trees that have grown up on the embankment.

*John Wakefield*

## WI



The WI does not meet in August but we will be meeting again in September in our normal venue for the first time since March 2020. This will be on Thursday 2 September, with Tony Kirby speaking on *Tides of Fortune: The Rise and Fall of English Holiday Resorts*.

New members and visitors are very welcome to join all meetings. We meet on the first Thursday of the month (except August) at 7.30pm in the Community Room behind St Mary's church in Great Shelford.

*Mary Talbott*

## Care For Trees



Qualified  
Reliable  
Insured  
Affordable

For a free quote call **Mike Wallman** on 01223 846390 or email [info@carefortrees.co.uk](mailto:info@carefortrees.co.uk)

FAMILY **Barker Bros** BUTCHERS

EST. 1841



Packaging  
Free  
Vegetables  
now on  
Sale

**QUALITY, LOCAL MEAT FOR EVERYDAY**

43 High Street, Great Shelford

Tel: 01223 843292 [www.barkerbrosbutchers.co.uk](http://www.barkerbrosbutchers.co.uk)

## J M R Electrical



**Electrical  
Contractor**



All Domestic, Industrial &  
Commercial work undertaken

21 Ashen Green, Great Shelford, Cambridge

Email: [jmr.electrical@hotmail.com](mailto:jmr.electrical@hotmail.com)

Tel: (01223) 844680 Mobile: 07766 68 38 86

## QUALITY BESPOKE PICTURE FRAMERS

**SIMON ROBINSON  
& SON**

Professional, Friendly Service  
Over 25 years' experience

Wide Selection of Frames  
Conservation Materials Used  
UV Protective Invisible Glass

Artwork/Photography  
Needlework/Tapestry  
Oil Paintings and  
Canvases Stretched  
Unusual Objects Framed  
Made to Measure Mirrors  
Limited Edition Prints Available

**Tel. 01223 873123**

Opening Hours:  
Tues-Fri. - 9am-5.30pm  
(Saturday - By Appointment)

[www.robinsonframes.co.uk](http://www.robinsonframes.co.uk)  
[lester@robinsonframes.co.uk](mailto:lester@robinsonframes.co.uk)

**STUDIO 6, PENN FARM,  
HARSTON RD,  
HASLINGFIELD, CAMBRIDGE  
CB23 1JZ  
(AMPLE PARKING)**

## HEATWAVE SERVICES



- Qualified to service and repair gas, oil and LPG boilers
- Installation of new central heating systems, unvented hot water cylinders
- Landlord Certificates
- Worcester Bosch Accredited Installer

Whittlesford based company for all your heating and hot water requirements

Tel: 01223 837774 or 07795 304013

Email: [heatwaveservices@btconnect.com](mailto:heatwaveservices@btconnect.com)

15 Maynards, Whittlesford, Cambridge, CB22 4PN

## 2G3S

In August we held a planning meeting, actually face-to-face, and another nature walk from Great Shelford to Hauxton. Our walks and cycle rides have been well attended and enjoyed by participants and it's a welcome change to meeting by Zoom!

**Monday 6 September at 7.30pm at the centre in Cox's Close, Stapleford, or Zoom.** Pippa Heylings, Chair of the Planning Committee of SCDC and also Chair of their Climate and Environment Advisory Committee, will talk on Tackling Climate Change and Biodiversity at a Local Level. There will be an opportunity to ask her questions.

**18-26 September Big Green Week** We haven't got all the details finalised, but check on our website or Facebook page, or email us. We expect to include:

**18 and 19 September - Fruit and Vegetable Swap**

**25 and 26 September – Litter Picks.** We'll provide the bags and grab sticks. Bring your own gardening gloves to protect your hands and wear something green, if you can.

Date to be arranged - A virtual interactive talk on climate change and climate justice to support developing countries towards zero carbon.

### **Bike Stand outside the Spar shop in Stapleford**



Many of you will know there is a bike stand outside the Spar shop in Stapleford. It was always a bit low and the chap who used to look after the flowers no longer does so.

2G3S supporter, Jim Chisholm has raised the stand and planted some attractive herbs in it.

If you are interested in green matters and the environment, send an email to

[greengroupssss@gmail.com](mailto:greengroupssss@gmail.com) to sign up for our newsletter or to get

a Zoom link to join in our meetings, or have a look at our website or Facebook page.

*Helen Hale*

[www.2g3s.staplefordvillage.org.uk](http://www.2g3s.staplefordvillage.org.uk)

**Recruitment Specialists**  
for the Built Environment



**Jobs & Career advice in:**

**Technical Moves**

- Land, Development & Property
- Surveying & Project Management
- Architecture & Planning
- Civil & Structural Engineering
- Executive Search, Construction, MEP

**01223 845333**

**technicalmoves.com**

Great Shelford based since 2012

**DAVID FOX**  
**CARPENTRY**

*Purpose-made  
joinery and fitted  
furniture*

Unit 4 Granta Terrace  
Stapleford  
Cambridge

**01223 845143**

**FOOT PROBLEMS?**

**Celia Kenney**

(HCPC Registered Podiatrist)

**Call 07939 227195**

(For home appointments)

Treatments cover:

Nail cutting and other nail  
conditions

Corn and callus  
removal/reduction

Fungal infections and  
athletes foot  
Verrucae/warts

The Beechwood Practice  
Cambridge CB2 1NT  
Call: **01223 315541**

**Jackson Cox Opticians**

**A Saxena MCOptom**

**Optometrist**

- *NHS & Private Eye Tests*
- *OCT Eye Scans*
- *Cataract, Glaucoma and Macular Degeneration Checks*
- *Contact Lens Checks*

Mon, Tue, Thur & Fri-9-5.30 Wed-9-6.30 Sat-8.30-4.30

30a Woollards Lane, Great Shelford, CB22 5LZ

Telephone: 01223 840 441

[www.jackson-cox-optician.com](http://www.jackson-cox-optician.com)

**After a buyer who loves  
what you've done?**

**Best talk to Bidwells**

  
**BIDWELLS**



**PROUD SPONSORS OF SHELFORD RUGBY CLUB**

**01223 624 573**

[talktobidwells.co.uk](http://talktobidwells.co.uk)



## OLD NEWS

### Extracts from the Great Shelford Chronicle 1774–1868

*Compiled and republished by Anne George, Glynis Trundle,  
Margaret Ward and Alan Bullwinkle, 1993*

#### 18 September 1852

EMIGRATION – A family consisting of 7 persons, viz. father, mother and 5 children, bade adieu to their native place, Gt. Shelford, on the 15th instant – going on the first train to London, on their way to Australia. Others, we hear, are shortly to follow.

#### 5 September 1857

RETRIEVER – a retriever bitch, dark liver colour, the property of Mr Alan Payne Ramsay of Gt. Shelford, has brought into the world within a few days thirteen black puppies, the colour of the dog. Last year, the same bitch produced the same number at one litter, thirteen, all the colour of herself.

## ANDREW PEACHEY

Plastering and Tiling Services with over 30 years of experience.

All aspects of Plastering, Rendering, Coving, Plasterboarding, General Property Maintenance and Renovating.



For a Free Quote



Tel: 07960 985278 Home: 01223 607432

Email: andrew.peachey@outlook.com



# TM Electrical

SERVICES

The Complete Electrical Service

Local - Experienced - Competitive

E: enquiries@tm-electrical.com

www.tm-electrical.com

38 Cheddars Lane, Cambridge CB5 8LD

Tel: 01223 441111

FREE ESTIMATES



**Carpet,  
Upholstery,  
Fine Rugs, Stone  
Floor Cleaning,  
Wood Sanding**

*"We were very satisfied with the technician and the way the carpets were cleaned. He was very polite and phoned to say he was coming and again later to let us know he would be with us shortly. Thank you for your services."* **Mrs Burling**

**Call today**

**01223 863632**



*Please  
quote  
Great  
Shelford  
Mag*

Art of Clean, Denny Lodge Business Park, Ely Road, CB25 9PH  
www.artofclean.co.uk

# THE GOG

**FARM SHOP**  
ESTD · CAMBRIDGE · 1919

BUTCHERY · DELICATESSEN · GROCERY · CAFÉ

**WWW.THEGOG.COM**



## TENNIS CLUB



The weather has been rather more autumnal than we usually expect in August, but summer is, nonetheless, in full swing at the tennis club. Ladies' and Men's league matches are complete now with mixed matches due to finish before the schools go back for the new term.

Club tournaments are also progressing smoothly, with thanks to Marcus, our tournament secretary, who diligently updates the players with draw movements each week. Finals will be held on Saturday 11 September, accompanied by a barbecue. This will be the first whole club social event since the start of the pandemic and we hope many of our members will feel confident to join us to reconnect and watch our top members battle it out for the club silverware.

The club would also like to congratulate Matt Sanders on being selected to represent Cambridgeshire in the County over 35s Cup, which took place at Eastbourne on 20–22nd August. Matt has been a much valued member of the club for a long time, giving generously of his time for many years as Men's Captain. He works especially hard with Ladies' team players and much of their recent success can be attributed to his dedication to their all round improvement. We're very proud that his ability and enjoyment of the game is being recognised more widely in the county. Well done Matt!

*Angharad Harris*

## CAMBRIDGE FLOWER CLUB

We are pleased to announce that Cambridge Flower Club will meet again for the first time since February 2020 with a garden visit on 16 September. Our programme for the remainder of 2021 is:

- |              |   |
|--------------|---|
| 16 September | Garden visit and afternoon tea.                   |
| 21 October   | Pat Barton will demonstrate 'Plan B'.             |
| 18 November  | Lee Berill will demonstrate 'Made for Christmas'. |

The meetings will be held in our usual venue of Whittlesford Memorial Hall, Mill Lane, Whittlesford, starting at 7.15pm. For more information or to enquire about joining Cambridge Flower Club, please telephone me on 01223 891464 or email [fredaorgee@gmail.com](mailto:fredaorgee@gmail.com).

*Freda Orgee*

## PLAYSCAPE NEARLY THERE!



How many more sleeps till the Playscape opens? Well we can't say exactly, but the middle of this month is looking very promising!

There have been some construction delays beyond the contractor's control. However, they have cracked on with laying the turf so we're optimistic that the Playscape will open within the original timeframe, which is a fantastic result. We are likely to opt for a soft opening and then perhaps (when we've caught our collective breath!) have a more official opening, so do keep an eye on our social media pages.

There's still a fun part to do though – planting up the new borders! If you haven't already volunteered to help, do email me: [info@shelfordplayscape.org](mailto:info@shelfordplayscape.org). We're hoping to plant in the 1st or 2nd week of September.

### Summer Pop-Up Events

These free community play sessions (funded by the Parish Council and run by Playscape) were a huge success, indeed they were a wonderful model of our inclusive aspiration for the Playscape: all ages and abilities took part, sharing the space with each other and other rec users beautifully.



*Eleanor McCrone*

**Kwanmusic.co.uk**

Kwan Music offers:  
Professional tuition by qualified  
and highly experienced  
teachers on piano, organ,  
bassoon, theory, musicianship  
and also assistance with A  
level and GCSE works.



For a free trial lesson with  
no obligation contact:  
[musicoaktree@zohomail.eu](mailto:musicoaktree@zohomail.eu)  
or visit:  
[www.kwanmusic.co.uk](http://www.kwanmusic.co.uk)  
for more info.



**ENTIRE**  
GROUP



The Complete Gas Heating and Plumbing Company

Plumbing • Heating • Gas  
Bathrooms • Water Softeners  
Property Maintenance

Tel: 01954 204044 • Web: [www.entiregroup.co.uk](http://www.entiregroup.co.uk)  
Email: [service@entiregroup.co.uk](mailto:service@entiregroup.co.uk)



**The Country Store**

*Pet, Equine, Smallholder,  
Shooting supplies,  
Country clothing,  
Wild bird food*

Unit 12a, Sawston Park,  
Pampisford, Cambridge  
CB22 3EE

[www.thecountrystore.co.uk](http://www.thecountrystore.co.uk)  
Tel 01223 837977

**D.L.M. AUTOS**

63a Orchard Road, Great Shelford CB22 5AA

**MOT - SERVICE - REPAIR**

**01223 844828**

[www.dlmautos.co.uk](http://www.dlmautos.co.uk)

**Nigel Powder Electrical**



**Nigel Powder**

**COMMERCIAL & DOMESTIC  
ELECTRICAL SERVICES**

Tel: 01223 845060 Mobile: 07725 044068

Email: [nigelpowter@btconnect.com](mailto:nigelpowter@btconnect.com)

[www.powter-electrical.co.uk](http://www.powter-electrical.co.uk)

16 Leeway Avenue, Great Shelford, Cambridge, CB22 5AU

**DWD**

**Home Improvements**

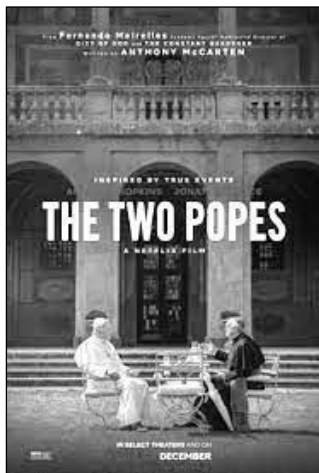
*Your local carpenter and  
small builder*

Carpentry, Kitchens, Roof repairs,  
Fencing, Painting interior/exterior  
Insurance work undertaken  
No job too small  
Quality service – free quotation  
23 years' experience  
Local references available

Telephone 01223 872558

Mobile 07855 579802

103a New Road, Haslingfield



## FILM EVENING SATURDAY 9 OCTOBER

There will be a welcome return of the Little Shelford Memorial Hall film evenings with a showing of 'The Two Popes' on Saturday 9 October. Doors will open at 7.30pm for an 8pm start, with a break for supper of pizza and salad.

The Two Popes is a 2019 biographical drama film, predominantly set in the Vatican City in the aftermath of the Vatican leaks scandal. It features Anthony Hopkins as Pope Benedict XVI and Jonathan Pryce as Cardinal Jorge Mario Bergoglio. The writer, Anthony McCarten, along with both actors, received nominations at the

Academy Awards, Golden Globes and British Academy Film Awards.

Tickets are £12.50 per person and are available from Sarah Coppendale on 01223 842498 or email [coppendales@btinternet.com](mailto:coppendales@btinternet.com) and Diana Haines on 01223 841415 or email [dianahaines42@icloud.com](mailto:dianahaines42@icloud.com).

Please book by Wednesday 6 October so that sufficient food can be ordered.

*Sarah Coppendale*

## NEW LOCAL BUSINESS ONE-TO-ONE YOGA



Yoga is an ancient form of exercise that focuses on postures and movements designed to boost your physical and mental wellbeing. It is a safe and efficient exercise which, under suitable tuition, can be flexible in how much exertion is appropriate. It is not necessary to be able to wrap your legs around your neck to benefit from yoga! People start yoga at different ages and frequently wish they had started earlier. The best time to start yoga is 5 years ago ... the second best time is now.

I am a trained yoga tutor and offer one-to-one sessions for seniors. This can either be at my studio in Great Shelford, or at your home. To discuss this further, please telephone me on 07939 681814 or email [eyxiang@yahoo.co.uk](mailto:eyxiang@yahoo.co.uk)

*Elizabeth Xiang*

## COMPUTER PROBLEMS? CALL EAGLE ANALYSIS



We have 40 years' experience and are Shelford-based.

- Need a new computer, laptop, tablet, iPad, printer, digital camera, smart TV? We can advise on the best options and supply and install.
- Need to set up Internet and network; problems with wireless deadspots? We can sort that for you.
- Dead computer or printer? We can fix it.
- Deleted your photos? We can recover them.
- Got a virus? We can remove it and prevent recurrence.
- Being scammed? We can help.

Call Mike Nettleton on 01223 721366 (M 07905 356468)

email: [info@eagleanalysis.co.uk](mailto:info@eagleanalysis.co.uk) web: [www.eagleanalysis.co.uk](http://www.eagleanalysis.co.uk)

**SOPHOS**  
Silver Partner



REGISTERED  
PARTNER

Ontrack Data Recovery  
Authorized Partner



## Cambridge Cat Clinic

Feline-only veterinary clinic,  
providing stress-free care for both  
you and your cat.

t: 01223 88 07 07

e: [info@cambridgecatclinic.co.uk](mailto:info@cambridgecatclinic.co.uk)

[www.cambridgecatclinic.co.uk](http://www.cambridgecatclinic.co.uk)

Cox's Drove, Fulbourn, Cambridge  
CB21 5HE



Feline better!

# SAM McGUINNESS

## Curtain Making Roman Blinds Sofa Covers

Call or email  
for a free quotation  
07803 737518

[samcampbell39@hotmail.com](mailto:samcampbell39@hotmail.com)

## WHITMORE & SON

CARPENTERS \* BUILDING CONTRACTORS \* DECORATORS



## ANDREW WHITMORE

84 HAVERHILL ROAD, STAPLEFORD,  
CAMBRIDGE CB22 5BX  
TEL: (01223) 847144

EMAIL: [whitmoreandson7@virginmedia.com](mailto:whitmoreandson7@virginmedia.com)  
[www.whitmoreandson.co.uk](http://www.whitmoreandson.co.uk)



FIRST CARE HOMES  
WHERE CARE COMES FIRST

## The Cambridgeshire Care Home

Situated in Great Shelford, the premier choice for a boutique care home in historic Cambridge. We provide unrivalled care using state-of-the-art technology and offer Dementia, Nursing and Residential care with a fully inclusive service package.

To book a showround call 01223 551 200 and ask for Yvonne Quigley, Customer Relations Manager.

## Rothwell's Carpet Cleaning

**Carpet Cleaning &  
Stone Floor, Upholstery, Rugs**

*A few points that make us stand out:*

Rothwell's has been in business since 1993.

We're an honest local family firm.

Our large truck-mounted machines mean more cleaning & drying power for the best results possible.

Members of both the NCCA and TACCA.

We will move the furniture.

100% satisfaction or it's FREE.

Call Oliver and Max Campbell  
for expert help today.

01223 832 928

[www.Rothwells.biz](http://www.Rothwells.biz)

## CRICKET CLUB

As foreshadowed in last month's report, the 1st XI had some tougher challenges in late July with two matches against Fulbourn, the only other previously undefeated team in the division. At Fulbourn, a very closely fought match ended in defeat by just two wickets, but the tables were turned in the return match on the rec a week later, when the margin was 20 runs. A good all round bowling performance led by Mark Milne's four wickets backed up Jonathan Ede's 133 not out, his maiden century. At the time of writing, the team is top of the table and should stay there as long as they are not particularly unlucky with the weather.

Our Under 11 and Under 13 teams both had successful seasons, each winning four out of six matches. As several players had played little or no cricket before, this was an excellent outcome. We believe that each team will be joint top of their division, but of equal importance are the progress each player made and the enjoyment they got from it. Roll on 2022!

*Peter Ede, Chair*



Great Shelford Library has now returned to its normal opening hours! As a reminder these are:

Monday	3–7pm
Tuesday	10am–1pm and 2–5pm
Wednesday	10am–1pm
Thursday	CLOSED
Friday	10am–1pm and 2–6pm
Saturday	10am–1pm
Sunday	CLOSED

Many thanks to all our readers for being so patient about the limit on library visitor numbers, which we hope will be eased very soon and for continuing to observe our Covid-19 safety precautions.



**MegaStorage**

SAFE & SECURE SELF STORAGE

## Self Storage in Sawston

Clean, Dry & Secure, 24/7 Access



**ssa**  
self storage  
association  
United Kingdom

[www.MegaStorage.co.uk](http://www.MegaStorage.co.uk)

01223 833 777



Painting & Decoration  
 Brickwork  
 General Building  
 Work  
 Carpentry  
 Fencing  
 Hard Landscaping



**Matt Goldsmith**  
Renovation & Decoration

**Contact**  
**Matt Goldsmith**  
 07392 292130  
[info.mattgoldsmith@gmail.com](mailto:info.mattgoldsmith@gmail.com)  
 @MattGoldsmithRandD  
 @mattgoldsmithrandd

*Great Value*

## KASH STORES

*Local Services*

**A great deal more from your local store!**

General Groceries • Fresh Produce • Confectionery  
 Instore Bakery • Off Licence • Photocopying  
 Newspapers • Magazines • Stationery • Lottery  
 Dry Cleaning • Shoe Repairs • Passport Photos

**Full Post Office counter facilities**  
 33-35 Hinton Way, Great Shelford  
 Tel: 01223 843307

**Shop opening times:**  
**Mon-Sat:**  
 7.00am-7.30pm  
**Sunday:**  
 7.00am-2.00pm



**Post Office opening:**  
**Mon-Fri:**  
 8.30am-6.00pm  
**Sat:**  
 8.30am-2.00pm

## TAYABALI & WHITE

ACCOUNTANCY | TAX | CONSULTING

5 High Green, Great Shelford, Cambridge CB22 5EG

Telephone: **01223 843324**  
 Email: [enquiries@tayabali-white.co.uk](mailto:enquiries@tayabali-white.co.uk)

## Bespoke Curtains & Blinds

01223 836498



[suecrowcurtains.com](http://suecrowcurtains.com)

## WHAT'S ON IN SEPTEMBER

A round up of what's on at some of the venues near us. For more information, times, ticket prices and bookings, please contact the organisation. Please note that this information has been taken from websites, can be subject to change and may already be fully booked. *All events are, of course, subject to Covid-19 restrictions in place at the time of the event.*

### CAMBRIDGE ARTS THEATRE

7–11	<i>Absurd Person Singular</i> by Alan Ayckbourn
16–18	<i>The Hound of the Baskervilles</i> with a comical twist
Telephone: 01223 503333 Web: <a href="http://www.cambridgeartstheatre.com">www.cambridgeartstheatre.com</a>	

### WANDLEBURY

8	<i>Wildflowers of Wandlebury</i> free guided walk
Telephone: 01223 243830 Web: <a href="http://www.cambridgeppf.org">www.cambridgeppf.org</a>	

### CAMBRIDGE

18–19	<i>Cows about Cambridge – Cheerio Cows</i> The cows that have been dotted about the city (until 4 September) will come together as a herd in The Grafton Centre, prior to the Charity Auction on 23 September.
<a href="http://www.cowsaboutcambridge.co.uk">www.cowsaboutcambridge.co.uk</a>	

### STAPLEFORD GRANARY

10	International opera star <b>Elizabeth Llewellyn</b> performs music by Puccini, Finzi and songs by Samuel Coleridge-Taylor from her debut album.
12	Coffee Concert from <b>Mifune Tsuji Trio</b> (violin, saxophone, piano) performing works by Piazzolla, Grainger and Milhaud.
18	Award-winning jazz trio <b>Acoustic Triangle</b> (saxophone, double bass, piano) are one of the most original and respected British Ensembles.
19	Coffee Concert from local musicians <b>Steve Bingham</b> (violin/electric violin) & <b>Derek Scurll</b> (percussion) promising 'eclectic surprises'.
24	Internationally renowned piano duo, the <b>Cann Twins</b> present a programme of much-loved classics and a world premiere by Antoinette Cann of her <i>Etudes de Concert</i> .
25	<b>RURA</b> are one of Scotland's most sought-after folk bands – a rugged and refined blend of fiddle, pipes, flute, bodhrán & guitar.
<b>October events also available for booking</b>	
Telephone: 01223 849004 Web: <a href="mailto:ace@staplefordgranary.org.uk">ace@staplefordgranary.org.uk</a>	



**Gavin Langford Architects**  
[www.gavinlangfordarchitects.com](http://www.gavinlangfordarchitects.com)



**RIBA**   
 Chartered Practice

The *Great Shelford Village News* is unable to check or verify the warranties or representation made by their advertisers and must therefore exclude any liability whatsoever arising from any advertisement in the *News* magazine, nor do any statements necessarily accord with the views of the editors.

*Great Shelford*  
*Solicitors*



**DAVIES**  
 solicitors advocates & mediators

- Family
- Divorce & Separation
- Children
- Civil Disputes
- Wills & Probate
- Estate & Tax Planning
- Powers of Attorney
- Court of Protection

*For a quality and attentive service*

Please Call: **01223 842211**

[www.daviessolicitors.co.uk](http://www.daviessolicitors.co.uk) [law@daviessolicitors.co.uk](mailto:law@daviessolicitors.co.uk)  
 30 Woolards Lane, Great Shelford, Cambridge CB22 5LZ

*Free and easy parking*

## Shelford Physiotherapy

### Are you in pain?

**Call 01223 844 488**

**Stephanie Hatter BSc (Hons)**

A Chartered Physiotherapist  
 registered with the HCPC.  
 Recognised provider for  
 BUPA, AXA PPP, Aviva, etc.



**Crafty Sue**



Handmade  
 Cushions and  
 Gifts  
 Haberdashery  
 Patchwork and  
 Craft  
 Supplies

Unit 34, Eastern Counties  
 Leather Site, London  
 Road, Pampisford,  
 Cambridge CB22 5EE

**07976 745839** [craftysuensue@hotmail.com](mailto:craftysuensue@hotmail.com)

# HOW TO CONTACT GREAT SHELFORD VILLAGE NEWS

We are pleased to receive articles, letters and notices for community events for consideration. Please send by email (preferably as a Word document), or send paper items, with contact details, to Judith Wilson, 11 Elms Avenue, Great Shelford, CB22 5LN. The copy date is usually the second Friday of the month. See the *Next Issue* box for next month’s date.

For guidance, please note that an article of around 400 words, without a photograph, will fill a full page. Notices for events work best as a half page (half A5) in landscape format.

## General enquiries and articles for publication:

01223 842553    [gsvneditorial@gmail.com](mailto:gsvneditorial@gmail.com)

## Commercial advertisements

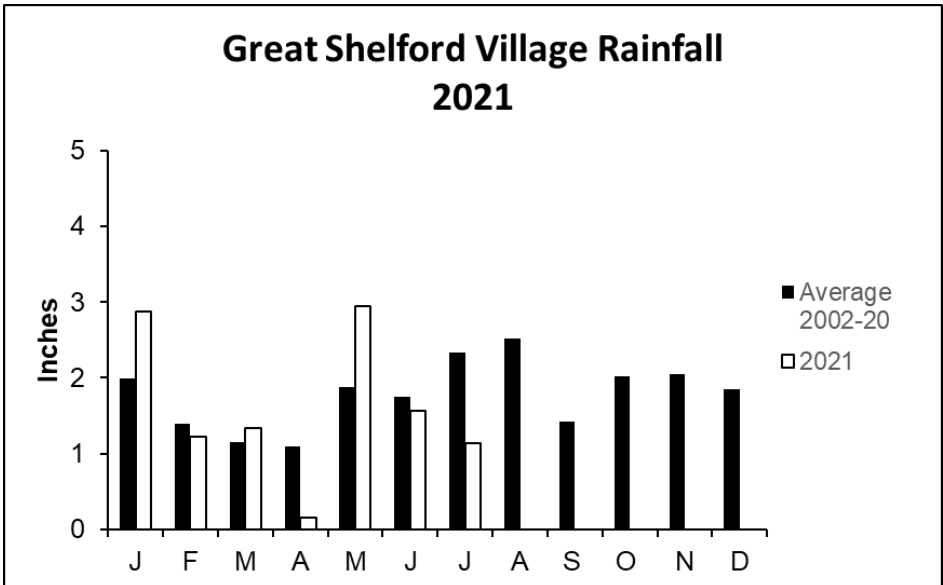
These are for a 12-month period, renewed in January. There is a waiting list.  
[gsvnadvert@gmail.com](mailto:gsvnadvert@gmail.com)

## Subscriptions and online payment details

01223 842993    [gsvnsubs@gmail.com](mailto:gsvnsubs@gmail.com)

## Editorial Committee

Lorraine Coulson, Duncan Grey, Bridget Hodge, Marjorie Smith, Judith Wilson.



From data supplied by Angus Campbell

## LOCAL ORGANISATIONS

2G3S Green Group	Linda Whitebread	greengroupsssss@gmail.com	843438
Badminton (Little Shelford)	Rosie Cranmer	rosie.cranmer@ntlworld.com	513572
Bowling Club	Alan Edwards	alanedwards505@gmail.com	666965
Brownies, Guides, Rainbows	Lisa MacGregor	shelforddistrict@gmail.com	843021
Bunch – Feast	Duncan Grey	dsg@post.com	842191
Carpet Bowls	Philip Seekings	phil.seekings@yahoo.co.uk	843416
Citizens Advice Bureau	Cambridge		0344 848 7979
Community Association Memorial Hall bookings:	Sheila Tilbury-Davis	tilburydavis.sheila@gmail.com	844384
Country Market	Dorothy Doel	dorothy@woodlandsroad.plus.com	843946
Cricket Club	Peter Ede	peter.ede@ntlworld.com	01223 510662
Football Club	Terry Rider	footybeast63@sky.com	01354 680661
Free Church	Maxine Du Plessis	administrator@shelfordfreechurch.org.uk	842181
Friends of Shelford Library	Daphne Sulston	dsulston@googlemail.com	842248
Granta Medical Practices		capccg.covid19.gmp@nhs.net	0300 234 5555
Great Shelford Friendship Club	Cheryl Mynott	cherylmynott@gmail.com	845435
Great Shelford Online	David Martin	davidm1961@gmail.com	845995
Mobile Warden Scheme	Claire Smith (Warden)	saurus1960@gmail.com	07811 676991
	Jenny David (Chair)	jennykmf@yahoo.co.uk	845367
Parish Church Bell-ringers	Ann Seaman	juliet.a.seaman@outlook.com	504682
Parish Church Community Room	Mary Lester	lestermh_uk@yahoo.co.uk	842411
Parish Church Friends	Bob Doel	bobdoel@woodlandsroad.plus.com	843946
Parish Church Sunday Club	Gillian Pett	gillian.pet29@gmail.com	843278
Parish Churchwarden	Stella Nettleton	stella.nettleton@btinternet.com	07763 887953
Parochial Charities	Mary Lester (Clerk to the Trustees)	lestermh_uk@yahoo.co.uk	842411
Police	Non-emergency number		101
Rainbow Pre-School	Alison Tomlin		07985 216603
Royal British Legion	Mark Chennells	mdchennells@btinternet.com	891817
Rugby Club	Louis Mann		843357
Sawston Sports Centre	Sawston Village College	info@sawstonsports.com	712555
Beavers, Cubs and Scouts		contact@sandsscouts.org.uk	
Shelford & Stapleford Strikers	Douglas White	douglas.white2@ntlworld.com	561753
Shelford Primary School	Chris Grey (Headteacher)	office@shelford.cambs.sch.uk	843107
Shelford Spokes Cycling Club	Brian Connellan	brian.connellan@eastyoke.com	845382
Shelford Support Group (transport to hospital, etc.)	General enquiries: Gillian Northmore		Shelfordsupport@googlemail.com 504542
	John Dibnah	842054	Carol Bard 668157
	Rosie Cranmer	513572	Marjorie Smith 564922
Stapleford Choral Society	Adam Pounds	adampounds54@btinternet.com	07804 308042
Tennis Club	Sarah Richards	secretary@gstc.org.uk	
The Arts Society South Cambs	Frances Clifford	frances.clifford@ntlworld.com	842551
Twinning Association	Penny Pearl	penny.pearl@btinternet.com	842483
U3A (Sawston Branch)	Derek Cupit		871527
WI	Vanda Butler (Secretary)	vanda.butler@googlemail.com	561053
Youth Initiative	Zac Britton	zac.britton@ssyi.club	07599 024210

# ShelfordFunRun.co.uk



#ShelfordFunRun #ShelfordSelfie : Supporting [ShelfordPlayscape.org](http://ShelfordPlayscape.org)



PLEASE REGISTER IN ADVANCE

# LIVE 5k 26 Sept 2021

VIRTUAL OPTION 20 JULY - 20 SEPT



RELIEF CHIROPRACTIC  
HEALTH CLINIC



Printed by E&E Plumridge Ltd, Linton