

Great Shelford VILLAGE NEWS

EST 1999

MAY 2018

PRICE 40p

Our new zebra crossing



Berberis darwinii

Photo: Mark Farrington

Repair Café comes to Shelford again Neighbourhood Plan Meeting

CONTENTS

Parish Council	1	Book Review	29
Planning Applications	5	Return to Nursing	31
Next issue of <i>Village News</i>	5	Water Lane	32
Zebra Crossing	7	Repair Café	34
Afternoon Tea	7	Editorial Committee Note	34
Community Energy Grant	9	Stapleford History Society	36
Shelford Medical Practice	9	Sawston Fun Run	36
Heidi Allen	11	Rail User Group	37
Shelfords WI	13	Engage Talk	37
Parish Church	14	Granta Flower Club	37
Playscape	17	Garden Club	38
Little Shelford Pantomime	17	Rugby Club	40
Free Church	18	Football Club	43
Shelford School Summer Fair	21	Cricket Club	45
Shelford School	22	What's On	45
Diary	24	Coming up in June	46
Bins	24	How to contact the <i>Village News</i>	48
Twinning	25	Rainfall	48
Neighbourhood Plan	27	Local Organisations	
Magog Down	27		

GREAT SHELFORD PARISH COUNCIL

CHAIRMAN		Mike Nettleton	721366	VICE CHAIRMAN		vacant	
CHAIRMEN OF SUB-COMMITTEES							
Planning		vacant		Highways		Barrie Ashurst	07803 001985
Cemetery and Allotments		Richard Davis	840393	Pavilion and Recreation		Malcolm Watson	844901
MEMBERS							
Barrie Ashurst	07803 001985	Peter Fane	843861	Charles Nightingale	844763		
Mark Carey	07921 907900	Stefan Harris-Wright	505570	Simon Talbott	847068		
David Coggins	842598	Helen Harwood	840393				
Richard Davis	07595 339187	Angela Milson	841100				
CLERK		Mike Winter	07870 807442	parishclerkgreatshelford@gmail.com			
COUNTY COUNCILLORS							
Kevin Cuffley		832079	Roger Hickford		07985 770082		
DISTRICT COUNCILLORS							
Charles Nightingale		844763	Ben Shelton	841085	David Whiteman-Downs		845954

GREAT SHELFORD PARISH COUNCIL

Summary from the draft minutes of the meeting on 21 March 2018

VILLAGE BIG ISSUES: ISSUES FOR FUTURE PLANNING

Cllr Mike Nettleton presented an overview of the contentious issues topics – Highways, Library, Policy on Green Belt and Affordable Housing and rebuilding of the Memorial Hall with underground parking.

Public questions and comments were taken after the presentation, which included: more suitable parking space must be found – Rayment's facilities are under discussion; traffic calming measures such as speed bumps etc cause other problems and specialist studies should be taken into account prior to any implementation; the Memorial Hall is not worthy of the village, but a vision of the whole village should be formed, not just focussing on one location; a local bus service into the centre of the village could be considered to ease traffic problems, however, the convenience of car use would probably remain; the cost of Sawston's Hub was in excess of £1.8m.

REPORTS FROM REPRESENTATIVES

District Councillor

Energy grants are available for community groups from £55,000 made available by South Cambridgeshire District Council (SCDC) to help Parish Councils, charities, sport and social clubs, not-for-profit organisations and other volunteer groups to become greener and, hopefully, reduce the amount they spend on energy bills.

County Councillor

Neither councillor attended or provided a report.

STANDING COMMITTEE REPORTS

Highways

- The Local Highways Initiative (LHI) 2017 schemes; school signs, poles and bollards have been installed.
- The LHI 2016 scheme for general village improvements including the zebra crossing work had commenced, but experienced delays.
- Both Speed Indicator Devices are in operation on village roads.
- The bus stop time indicator board in High Green has been delayed due to the power connection.

- The LHI 2018 scheme did not receive a grant.
- The Car Park lease costs have been increased by the RPI and backdated to June 2013. The annual increase is significant and the backdated value is considerable. A discussion is to take place with the lease holders or agent.

Planning

Planning meetings will now take place on a two-weekly basis to meet the 21 day response period.

Recreation Ground

Cllr Malcolm Watson reported:

- Erect Architecture documentation for planning submission on the full Playscape proposal was reviewed and approved for submission.
- CCTV coverage of the recreation ground, pavilion, Memorial Hall and Feast was reviewed. The full proposal and costs will be available at the next Parish Council meeting for approval.
- There will be additional cleaning of the Pavilion entrance area and meeting room to ensure areas are suitable for private hire arrangements.
- New Feast service facilities will not be available in time for this year's Feast due to the delay and modifications of Feast requirements and potential cost overrun review. Work has been postponed until after the 2018 Feast. A contingency plan has been established for the 2018 Feast.

Cemetery and Allotments

Cllr Richard Davies reported on the outstanding allocation of vacant allotments.

Community Association

- The Parish Council funded an asbestos survey for the whole building of the Memorial Hall and a demolition survey for the boiler house. This has not revealed any serious issues.
- The Parish Council has funded a full five year fixed wiring test for the Memorial Hall, Sports Club and Scout Hut. Initial indications are that there are some very minor issues.
- A Fire Risk Assessment and Risk Assessment have been completed for the Memorial Hall
- The Community Association liability insurance, normally obtained separately from Came and Company by the Community Association, is being reviewed by Parish Council Insurer Came and Company for inclusion in the Parish Council policy to save costs.

Pavilion

The Pavilion Manager reported that: anti-social behaviour has improved since the introduction of monitoring by a local security contractor; the general standard of cleaning has dropped so this may require changes with potential increased costs; it was agreed to accept the offer of a free table tennis table.

Feast Liaison

The clerk reported: the services tender has now been reissued; the Feast Committee has been made aware of potential delays and work starting after the 2018 Feast; Feast Liability Insurance is being reviewed by the Parish Council Insurer, Came and Company, for inclusion in the PC standard policy.

Other

- A review of the installation of pavement bollards adjacent to the bus shelter on Cambridge Road, outside Cambridge MiniWorks Ltd. It was agreed to review this again at the May Parish Council meeting, prior to any changes from the current situation.
- A review of the possibility of a public toilet on the recreation ground in the 2018/19 Budget. This has been requested by many residents. Cllr Coggins said that most councils are removing public toilets due to the high cost of maintenance and vandalism. Cllr Nightingale said that the Memorial Hall toilets were suitable, but not open at all times.
- The bus shelters on London Road and Hinton Way, along with subsequent maintenance costs, are to be added to the asset list.

FINANCE

17 payments were presented for approval to a value of £7,445.80.

Correspondence

Various complaints have been received that adverts placed on Parish Council notice boards have been removed by competitive providers or to simply make space for alternative material. The Clerk is to notify any users that advertising is free and unmanaged by Parish Council.

Closure of Granhams Road Railway Crossing

We have been notified by Cambridgeshire County Council that the crossing will be closed from Thursday 17 May to Friday 18 May.

Full copies of the minutes can be viewed on the Parish Council website greatshelfordparishcouncil.gov.uk and at the library.

BELLE CASA

DOMESTIC CLEANING (UK) LTD Est. 2002

For cleaning, washing, ironing, etc

A professional service with
dependable, honest cleanersInclusive rate of £12.50 per
hour (£12.00 for 5 or more)**01223 441055**www.CleanersCambridge.com**SOLUTIONS****Gents' Hair Salon**
(ground floor)**Ladies' Hair Salon**
(first floor)*Air-conditioned*

44 Woollards Lane

Great Shelford

CB22 5LZ

Closed all day Wednesday
& Sunday**☎ 01223 843844****Mrs Rosemary Rigge**Grad Dip Phys MCSP Reg.HPC
Chartered Physiotherapist**TREATMENT ROOMS:**26 Mingle Lane, Stapleford,
Cambridge CB22 5SY

or HOME VISITS

Tel: 01223 844091

Mobile: 07958 708728

Reg BUPA, PPP, etc

DUXFORD BUILDING & LANDSCAPE SERVICES

All work considered from:

- Hard Landscaping
- Brickwork
- Structural Alterations
- Carpentry
- All types of Building Works from Extensions to Conversions

**D A Rayment**

Home: 01223 837645

Mobile: 07958 774360

Email: duxfordbuilding@btinternet.comWeb: www.duxfordbuildingandlandscapes.com**sawstoncarpetandflooringltd****CONTRACT FLOORING****KARNDEN****CARPETS****VINYL/LINO****VERTICAL BLINDS****ROLLER BLINDS****SAFETY FLOORING****AMTICO****LAMINATE****COIR/SISAL****VENETIAN BLINDS****PARQUET FLOORING**

Mon-Fri 9am to 5pm

Sat 9am to 4pm

Unit 3A, Sawston Park, London Road

Pampisford, Cambridge, CB22 3EE

t 01223 837005

www.sawstoncarpetsandflooring.comemail sawstoncarpetsandflooring@gmail.com**NB HORTICULTURE LTD**All types of garden work
& landscaping
www.nbhort.co.uk

Hedge & Shrub supplier

www.cambridgehedges.co.uk

Mr N Barber BSc RHS Cert

109 Cambridge Road

Great Shelford, CB22 5JJ

07789 564042

01223 977306

PLANNING APPLICATIONS PARISH COUNCIL COMMENTS

S/0747/18/FL	Mr & Mrs Sean Richardson 14 Ashen Green	Proposed change to the external wall finish of the approved sitting room/study from brickwork to painted render. Existing garage walls (with the exception of the rear north east elevation) are to be rendered too.
GSPC does not understand why the applicant is experiencing difficulties in sourcing appropriate bricks. They appear to be yellow Cambridge bricks, which are still in common use and weathering would mask any minor differences. This is a Conservation Area and it is important to maintain consistency with the rest of the street scene. No other garage in the street is rendered and we recommend rejection of the application to render the garage.		

S/4566/17/VC	Mr/Mrs Rose 255 Hinton Way	Improve the visual alignment of glass screen to stone coping. Variation of Condition 3 of Planning consent S/2809/14/FL
No objection.		

S/0762/18/VC	Rachel Livings The Gables 1A Granhams Road	Variation of Condition 6 (soft & hard landscaping S/2573/14/FL)
GSPC is happy to leave the decision on this application to SCDC.		

JUNE ISSUE OF THE *VILLAGE NEWS*

The deadline for copy for the next issue of the *Great Shelford Village News* is **Friday 11 May** and it should be available in the shops on **Friday 25 May**.
Subscribed copies will be delivered shortly thereafter.

Gavin Langford Architects
www.gavinlangfordarchitects.com



RIBA 
 Chartered Practice

The *Great Shelford Village News* is unable to check or verify the warranties or representation made by their advertisers and must therefore exclude liability whatsoever arising from any advertisement in the *News* magazine, nor do any statements necessarily accord with the views of the editors.

Great Shelford Solicitors



DAVIES
 solicitors advocates & mediators

- Family
- Divorce & Separation
- Children
- Civil Disputes
- Wills & Probate
- Estate & Tax Planning
- Powers of Attorney
- Court of Protection

For a quality and attentive service

Please Call: **01223 842211**

www.davinessolicitors.co.uk law@davinessolicitors.co.uk
 30 Woolfards Lane, Great Shelford, Cambridge CB22 5LZ

Free and easy parking

Shelford Physiotherapy

Are you in pain?

Call 01223 844 488

Stephanie Hatter BSc (hons)

A Chartered Physiotherapist
 registered with the HCPC.

Recognised provider for
 BUPA, AXA PPP, Aviva etc.



ACE Cultural Tours

Cultural tours for
 the curious traveller

aceculturaltours.co.uk
 01223 841055

CROSS ABOUT OUR CROSSING?

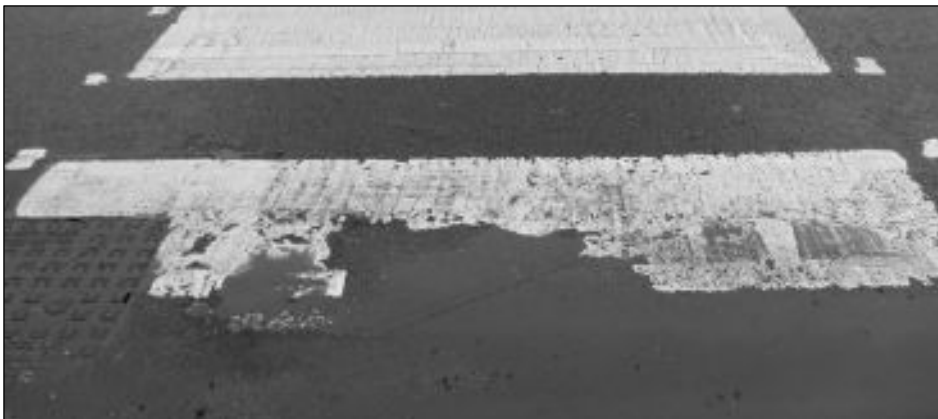


Photo: Duncan Grey

I'm sure everyone in the village was delighted to finally see the zebra crossing on Woollards Lane completed recently, but did we really want it to look as though it had been there for 20 years? This was how it looked just one week later.

We contacted the Parish Council for their comments and received this from the chair, Mike Nettleton, 'It has taken the County Council far too long to deliver the zebra crossing. The standard of work is unacceptable and the Parish Council is already pursuing the issue'.

Editorial Committee

Come and join us, with your friends and family, for

Afternoon Tea

at the Scout Hut, Great Shelford, Saturday 26 May 2-4pm

£8 per person to include a platter with a variety of homemade savouries and sweets, along with lots of tea, coffee or soft drink.

There will also be crafts to buy and a raffle.

Tickets in advance only. Please telephone
01223 841364 or email brown_owl@hotmail.co.uk.



This is a fundraising afternoon for Charlotte Coulson, Brown Owl of 2nd Shelford Brownies, who will be leading a group of Rangers (15-18 year olds) on an overseas trip to Madagascar in 2019.

NICHOLAS CLIFFE & CO CHARTERED ACCOUNTANTS

*Business Advisers
for
South Cambridgeshire*

**Accounts, Audit
VAT & Tax Advice.
WE WANT TO
HELP YOUR
BUSINESS GROW.**

Free initial meeting
and business
"health check".
Realistic fees.

Mill House, Mill Court,
Great Shelford
Tel: 01223 471576

www.nicholas-cliffe.co.uk

A REALLY GOOD TRADITIONAL TOYSHOP

SET IN ONE OF TWO FARM RETAIL COURTYARDS WITH
AMPLE FREE PARKING AND GREEN HEADINGS TO RUN
AND PLAY IN!

COME OUT AND VISIT US FOR GREAT GIFT IDEAS AND
WONDERFUL TOYS FOR ALL AGES INCLUDING...

BOOKS • GAMES • ART & CRAFT • PARTY • PUPPETS
POCKET MONEY • LEGO • PLAYMOBIL • STEINMAN
JELLYCAT • SUEY • AND MUCH, MUCH MORE!

ROCKING HORSE THE COUNTRY TOY SHOP

BERNARD MANOR, NEW LIND, BAYDON, CAMPS, CULFITT
01223 714574 WWW.ROCKINGHORSETOYSHOP.COM

POWDERY LANE, LADDIS, 9.30am - 5pm, 20 MAR - 11 APR - 5pm

15 MORE UNIQUE SHOPS TO VISIT - FARMSHOP AND MORE!



SIMON SPARROW CARPENTER AND JOINER



22 Woollards Lane, Great Shelford
Cambridge CB2 5LZ
Telephone (01223) 842380



Paul J Neaves
Electrical Contractor

NEAVES ELECTRICAL Ltd

All aspects of electrical work undertaken
installation, maintenance & repairs
www.neaveselectrical.co.uk

Tel: 01223 250956

Mobile: 07702 280687

Email: paul@neaveselectrical.co.uk

Come home to a CLEAN HOUSE!

Andi and John Home Cleaning and Ironing Service
Accuracy and Reliability :: Good References!

Call us today for a free estimate!

07827328334

andreabecsi77@gmail.com



"Andi and Johnny are very polite, reliable and hard
working. If you need a cleaner I would definitely
recommend them!" Mrs Marshmam, Great Shelford

"Punctual, reliable and incredibly efficient!"

Mrs Salas, Cambridge

JASON KIRBY Professional Painting & Decorating Ltd

*A Professional Service
from Start to Finish*

Tel: 01954 211775

www.jasonkirbyltd.co.uk



COMMUNITY ENERGY GRANT

The Community Energy Grants scheme from South Cambridgeshire District Council is available to voluntary and community sector groups (such as sport and social clubs etc) and parish councils to support the delivery of local energy saving and green initiatives.

Grants of up to £3,000 are available for projects such as:

- Installation of energy saving and efficiency measures (eg lighting and heating controls, upgrades to LED lighting, roof and cavity wall insulation and energy efficient boilers).
- Installation of electric vehicle charging points for community use.
- Battery storage for solar panels and other low carbon energy generation measures.
- Grants can also be awarded to fund energy surveys for community buildings and village halls to allow organisations to investigate which green energy measures would be most suitable for their building.

Grant applications are accepted at any time, until funding (a total of £55,000) runs out, and can completely or partially cover the costs of a project, equipment or work. Funding is allocated on a first come, first served basis and awards are decided at the Finance and Staffing Portfolio Holder's meeting (usually monthly).

Guidance notes for eligibility criteria and the types of projects that can be funded, as well as the online application form, can be found at <https://www.scambs.gov.uk/community-energy-grant>.

Cllr Charles Nightingale

SHELFORD MEDICAL PRACTICE

Travel health & vaccinations

It's that time of year again when we are starting to plan our summer holidays. Please remember though that some destinations require more than just suntan lotion and a swim suit! There are many places you can get great travel advice from and we suggest you start by checking the recommendations for your travel destination on the Fit For Travel website www.fitfortravel.nhs.uk.



We can provide you with NHS vaccines for diphtheria, polio, tetanus booster, hepatitis A and typhoid. You will need to complete a travel form, which should be completed and returned prior to your appointment to enable the practice nurse to prepare for the consultation. The form can be found on our website or is available from our reception.

For any complex or high risk travel, or if you require vaccines not available on the NHS, you will need to book a travel advice consultation with one of the local travel clinics, which can provide the full range of private immunisations and comprehensive advice. Details of local travel clinics can be found on our website and include Granta Medical Practices, Boots, and The Travel Clinic.

Previous vaccination history

Our administration team can provide you with an record of your previous vaccination history but please allow three working days for us to process your request. Alternatively, you can register for online access to your records.

Regular medication

If you are on regular medication, please ensure your annual review is up to date, and that you have requested adequate supplies. We can issue up to three months of medication in advance, and if your travel is for longer than this, you will have to access further medication while you are away.

Your doctor or the practice nurses are happy to review with you any complex health or medication needs prior to travel to ensure you are as prepared as possible. We cannot do this in emergency appointments, so please book early for travel vaccinations.

If you have recently registered with us, it can take up to 10 weeks for your notes to arrive here from your previous practice, so you will need to bring with you details of any vaccinations you may previously have had. This is so you are not given any vaccinations you do not need.

Don't leave it too late!

Most vaccinations need to be administered at least four weeks before departure and for some risky areas you will need to have injections three months before you travel. Please remember to book in plenty of time, ideally four to six weeks before departure.

As always, we welcome any patient feedback so please feel free to contact us with comments, queries or questions – our aim is to provide the best possible service we can to all of our patients.

Sandra East, Communications Manager

HEIDI ALLEN NEWS

As many of you will be aware, the Greater Cambridge Partnership (GCP) has been consulting on whether there should be a Park and Ride near junction 11 of the M11. Many Harston residents were concerned about the plans so last month, I attended the GCP's consultation event in Harston along with many residents, the Parish Council and local councillors.



The GCP tried to reassure everyone that the proposed P&R would not add to traffic congestion through Harston. Because there will be even greater growth on the Addenbrooke's biomedical campus the GCP understandably want to discourage M11 traffic from driving towards the City centre.

Since the meeting, I have spoken with local county councillors Kevin Cuffley and Roger Hickford and at length with the GCP's Chief Executive and Director of Transport.

Although everyone recognises the enormous employment growth coming to the campus, I believe Harston residents need more data to be persuaded by the 'no increased traffic through Harston' argument.

I was therefore extremely pleased by the GCP Executive Board's subsequent decision to request further analysis be undertaken and opinion sought before the project is brought back to committee for a decision. I will continue to work closely with the GCP, local councillors and the Mayor to ensure ALL options are looked at, and the best solution identified. We must find a solution that deals with City congestion, but not at the expense of our villages. If we can help Harston with their already well understood congestion at the same time, then even better.

On 18 May, between 3pm and 5pm, I will be holding a 'by appointment' surgery at my Sawston constituency office. If you would like an appointment, please give my office a call on 01223 830087. Details of all upcoming surgeries can be found on my website www.heidisouthcambs.co.uk.

To contact me, please email heidi.allen.mp@parliament.uk. You can also phone my Westminster office on 020 7219 5091 about national issues or my constituency office on 01223 830037 for local concerns.

Heidi Allen, MP for South Cambs

GATWARD & SONS

BUILDING ON EXPERIENCE
CARPENTRY, JOINERY & BUILDING CONTRACTORS

☎ **01223 570 143**

☎ **07525 494 478**

✉ contact@gatwardandsons.co.uk

BASED IN STAPLEFORD

**EXTENSIONS
CONVERSIONS
RENOVATIONS
ALTERATIONS**

EXPERIENCED PRIMARY TEACHER

Tess Jones BA Hons PGCE

Do you feel your child would benefit from having a helping hand with their English and/or Maths?

Do they need consolidation with certain aspects of their learning or to have their confidence boosted? Or perhaps they are sitting an entrance exam for Year 7.

I offer traditional private tuition in a welcoming and caring home environment and am experienced in both KS1 and KS2.

Please call Tess on 01223 874674 for a free initial visit or email

tess.jones@ivywood.co.uk

Thomas J Shearing

Furniture Restoration and Traditional Upholstery

Comprehensive re-upholstery service

Curtain making and hanging service

Vast range of furnishing fabrics

Antique and modern furniture restored

Picture Framers and Restorers

French polishing and other finishes available

Bespoke mirrors made to order

The Hall, 4 Chapel Street, Duxford

Tel: 01223 837150 Email: shearing@mail.com

**Panther spotted
in your village!**
It just got cheaper

Panther territory just got bigger and now includes your village! Cambridge's largest and best loved taxi company has launched a brand new, reduced rate village taxi service. Introducing fares that are fair in your village. All journeys on the meter* means no fixed price. You just pay for your journey door to door – and not a penny more.



PANTHER TAXIS

01223 715 715

www.panthertaxis.co.uk

*All fares for saloon car bookings on meter within or between villages listed. Prices for 5-8 seater available on request. See www.panthertaxis.co.uk for details.

WITCHAM • HESTON • WIMBORNE • DITTON • AMBROUSE • COTON • BARTON • GRANTCHESTER
TRUMPINGTON • THE SHELFORDS • STAPLEFORD • CHERRY HILLION • FULBOURN
TVERSHAW • SHOW CLIFF CLIFF • PEN DITTON • HORSANSEA

CHIMNEY SWEEP

J. L. WIGHT
Guild of Master
Chimney Sweeps

Fully Insured.

Advice given / problems solved.

Certificates Issued.

01954 253315

www.camsweep.co.uk

B Cow Lane, Rampton



SHELFORDS WI

We held our AGM at the April meeting, as the March meeting had to be cancelled due to bad weather. Flowers were presented to members of the committee who were stepping down and two new members were welcomed to the committee. Anna Sugden and Shirley Warbrick were unanimously re-elected to their positions as President and Vice-President/Treasurer. Our WI has continued to develop positively, with another strong year of excellent speakers and activities, including a trip during the summer to the Chilford Hall Winery. We also continued our support of our villages though volunteering, by serving teas at The Shelford Feast and the Playscape Fun Run and hosting a bottle raffle stall at the Little Shelford Fun Day.

Following the AGM, we listened to an entertaining, heart-tugging and inspiring talk about the charitable work being done in Malawi by local charity Aqua-Aid, illustrated with photos of the orphaned children they take care of. Josie Charter took us through the history of the charity, the facilities they've built (day-care centres, schools, clinics and residences) and the support they provide to the many villages they are involved with. We were all touched by the individual stories of determination, resilience and strength. We were also impressed by the way the charity looks to provide a solid foundation for the children to grow up independent and with the education, training and skills necessary to help themselves. Aqua-Aid has expanded to help the wider communities through the provision of simple, but necessary, healthcare and the distribution of donated second-hand glasses brought from the UK. All of this is achieved through Cooler-Aid (which rents water coolers to organisations like Addenbrookes hospital) and project sponsorship by local businesses.

We have pledged to do a glasses collection for Josie to take out with her on her next trip to Malawi. So, if you have any old spectacles or sunglasses lying around, they could help someone. Please give them to any WI member or drop them off at 12 Church Street, Great Shelford.

At our next meeting on 3 May, the speaker will be the Revd Dr Nicholas Henderson, a writer and historian and Arts Society accredited speaker. He will give his talk entitled '*Fortitude and Fancy, Catherine of Aragon and Anne Boleyn – two of Henry VIII's most important wives*'.

New members and visitors are always very welcome. We meet on the first Thursday of every month at 7.30 pm in the North Room behind All Saints' Church in Little Shelford.

Mary Talbott & Anna Sugden, www.theshefeldswi.wordpress.com

GREAT SHELFORD PARISH CHURCH

www.stmarysgreatshelford.org

A very warm welcome to your historic parish church – please call in and enjoy the sacred space.

Granta Deanery Ascension Day Eucharist 10 May 7.30pm

The parishes of the Deanery are invited to gather together for a Eucharist to celebrate Ascension Day at Holy Trinity church, Hildersham. Lifts will be available; please contact the Churchwardens.

During the service, the newly appointed Deanery Youth Work Enabler, Rachael Went, will be commissioned. One of Rachael's tasks will be working with young people across the Deanery in planning **CONNECT**.

con·nect /kə'nekt/

verb: bring together or into contact so that a real or notional link is established

CONNECT is a monthly youth service seeking to do just that; to bring young people (aged 9+) from all over South Cambridgeshire, together, along with their families, to establish real connections with each other and with God!

Launched in 2016, **CONNECT** is a really exciting initiative brought about with the help of a small group of clergy, youth workers and volunteers who all want to see God's Word brought to life through engaging music, activities, drama, games, speakers and prayer.



Over the coming months we will be looking at some of the stories Jesus told, hoping to unravel and explore together what these well-known – and sometimes not so well-known – stories can really mean to us today.

We will be meeting at St Andrews Stapleford on the **fourth Sunday** of each month from 5.30pm, where there'll be an informal, interactive service followed by a time of food and fellowship all together. The dates for your diary are: 24 May, 24 June and 22 July – so be sure not to miss out!

This really does promise to be a fantastic gathering that we hope you can be a part of, too. Invite your friends, invite your family and let's join together. Let's **CONNECT**.

For more information or to get involved, please email: connectservice.cambs@gmail.com or jenny@jennyduke.co.uk

St Mary's Toddler Group

For children from 0 to 3 years of age with their parents/carers, meeting on Thursday in the Community Room from 9.30–11.30am (term time only). Contact Gillian Pett gillian.pett29@gmail.com for more details.

St Mary's Sunday Club

Sunday Club meets on the first Sunday of every month during the 10am service, with a story and activities for children of all ages. Most other Sundays there is an activity for children during the service. Contact Gillian Pett gillian.pett29@gmail.com for more details. Helpers are welcome!

From the registers

Marriage:	7 April	Paul & Ann Seaman
Burial of cremated remains:	30 April	John Haybittle RIP

Regular services

Daily:	9am	Morning Prayer
	5pm	Evening Prayer
Wednesday:	9.30am	Holy Communion (BCP 1662)
Sunday:	8am	Holy Communion (BCP 1662)
	10am	Parish Communion, our main Sunday service.
	6.30pm	Evensong (BCP 1662)

For further information about Great Shelford Parish Church

visit our website: www.stmarysgreatshelford.org

Priest in charge: The Revd Simon Talbott 01223 847068 or 0705 0042616 or email vicar@stmarysgreatshelford.org

Assistant Curate: The Revd Monica Cameron 01223 779780 or 07985 304860 or email curate@stmarysgreatshelford.org

Parish Administrator: Katharin Page 07710 518220 or email pagekatharin@gmail.com

St Mary's Great Shelford is a Registered Charity, No. 245456

The Gardener's Garden Centre
Cambridge Road, Great Shelford
Tel: 01223 842777
enquiries@scotsdales.com
www.scotsdales.com

Opening times:
Monday - Saturday 9am - 6pm
Sunday 10.30am - 4.30pm
Late night Thursday until 8pm

Scotsdales®
YOUR GARDEN CENTRE



FIRST CALL PEST CONTROL

Rob Cowling
NPTA registered

**Wasps, mice, rats,
moles, insects,
etc.**

Discreet service

Mob: 07951 047688
01223 630526

Layer Travel

Tailored Travel Solutions

Janice@layertravel.co.uk
01223 841376

Tailor-made holidays
Brochured holidays
Accommodation

City Breaks

Cruises

Touring



Skiing



Flights

GOG MAGOG MOWER SERVICES

Repair, Service and Sales of all Garden
Machinery including Strimmers and Chainsaws
Free Collection and Delivery Service available

01223 832 894 / 0776 955 8279

www.gogmagogmowers.co.uk

DAVID FOX CARPENTRY

*Purpose-made
joinery and fitted
furniture*

Unit 4 Granta Terrace
Stapleford
Cambridge

01223 845143

*Shelford
Deli*

**REAL FOOD MADE IN SMALL
BATCHES USING NATURAL
SUSTAINABLE INGREDIENTS**

ARTISAN KITCHEN DELI CAFE

8A WOOLLARDS LANE, GT SHELFORD, CAMBRIDGE

T: 01223 846129 WWW.SHELFORDDDELI.CO.UK



PLAYSCAPE WORK CONTINUES!



Playscape and the SSYI took the opportunity over the Easter break to do some remedial work in the copse. Thanks to Kira, Marlon and Zac (pictured) there is a new (sturdier!) willow and hazel hurdle. If you take any budding den builders down to the copse please encourage them to use sticks that are lying on the ground and

leave the weaving intact, thank you!

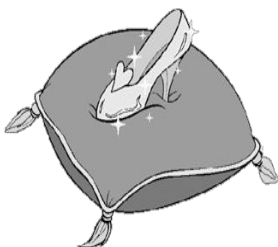
Also, thanks to the Beavers, the rec has a new hedge planted in front of the fence by the flag-pole. We used the remaining funds from the Co-op grant to purchase the saplings, which are a mixture of hazel, blackthorn, hawthorn, dogwood and dog rose – give them a few years and they'll look great as well as being a perfect wildlife habitat.

And finally, fundraising continues, not least with the opening of the Fun Run registration! Do sign up for this brilliant local event, a 5km run on closed roads through the beautiful Shelford Villages with all proceeds going to Great Shelford Playscape. Children, adults, runners, walkers, all welcome so why not put a team together and get yourselves sponsored? Register here www.shelfordfunrun.co.uk, Sunday 16 September 2018.



Eleanor McCrone info@shelfordplayscape.org

LITTLE SHELFORD PANTOMIME 2019 AUDITIONS



Auditions will be held on Sunday 29 April for Cinderella at Little Shelford Memorial Hall. Those who have been in pantomime before, please come and audition between 2–5pm. Children new to pantomime, please come between 12.30–2pm.

Please ring me on 01223 842498 or email coppendales@btinternet.com if you have any queries.

Sarah Coppendale



Great Shelford
Free Church

LOVE YOUR NEIGHBOUR... AS YOURSELF

Hygge, Mindfulness, Veganism – all have been in the headlines over the past couple of years, and now we have ‘Self Care’. At first glance, that might appear to be something that Christians wouldn’t be embracing; after all, isn’t Christianity about always putting others’ wishes and wellbeing before your own? Well, yes ... but no. It’s a little bit like the announcement on an aeroplane when you’re advised to fit your own oxygen mask before trying to help anyone else. Yet so often, we end up agreeing to do all sorts of favours for people simply because we don’t like saying ‘no’, and that can end up with what a colleague of mine used to call ‘the smell of burning martyrs’ as some overloaded person resentfully carries out a task (often with a fair bit of clattering and banging and a grim face).

Jesus calls us to ‘Love your neighbour as yourself’, which means we are commanded to take responsibility for our own health and wellbeing – self care, in other words. For a body that has had inadequate exercise, meals eaten on the hoof and not enough sleep, can’t adequately care for others. A mind that is trying to do several things simultaneously while constantly checking its mental ‘to do list’ will never be present enough to really appreciate who is here and now. A soul that is self-critical in a way that it would never speak to a dear friend is not well-placed to truly appreciate others’ gifts.

Loving yourself is being thankful for what God made; as Psalm 139:14 says,

‘I will give thanks to you because I have been so amazingly and miraculously made. Your works are miraculous, and my soul is fully aware of this.’

To love others, to truly go and show God’s love to another, starts with accepting God’s love for us. Sometimes that will mean leaving space around doing things for others in order to drink in God’s love for ourselves, so that as another Psalm, 23:5, says, ‘my cup overflows.’ A cup runs over when it cannot hold all that is being poured into it. It is when we have taken enough time to let ourselves be filled that we can let that love overflow to others.

*Liz Jenkin
Elder, Great Shelford Free Church*

SERVICES AT GREAT SHELFORD FREE CHURCH

SUNDAY MORNING WORSHIP – SERVICES AT 10.30AM

You are most welcome to join us
Refreshments are served in the hall after the service

Friday Worship

11am–12 noon
Followed by Call Inn (12.15pm)
Worship with the chance to share
lunch afterwards

Pentecost Praise

Friday 18 May
7.30–9pm
followed by refreshments
An evening of praise, worship and
reflective prayer

CHILDREN'S WEEKLY/TERMLY ACTIVITIES

Kids Club on Sunday

Main Hall 10.30–11.30am

Children aged 3–10 years

Youth Activities in the Loft

School Year 6+

Games, craft activities & bible stories

Have fun and meet new friends

Wednesdays

Little Steps 10am–12 noon

Toddlers aged 0–3 years with carers

Tiny Toes 1.30–3.30pm

Babies under 1 year and their carers

Term Time Only – After School Club activities

Jump 3–5 Years Tuesdays 3.30–4.45pm

Heroes 6–9 Years Tuesdays 3.30–5pm

Mix 10+ Years Tuesdays 3.30–5pm

COFFEE POT

Every Tuesday @ 10am. A chance to meet and chat with others
over a cup of tea/coffee

For further information – visit our website:

www.shelfordfreechurch.org.uk

Church Office (Access via Ashen Green):

Tel: 01223 842181

administrator@shelfordfreechurch.org.uk

AFFORDABLE PLUMBING

- Taps changed
- Ball valves changed
- Cisterns changed & repaired
- Sanitary ware replaced
- Showers installed
- Washing machines & dishwashers installed
- Radiators & TRV valves

FULLY INSURED

Contact Michael
07850 652838
01223 264658

affordableplumbing99@yahoo.co.uk

HEATWAVE SERVICES

*Servicing, installation
and repair of all
domestic heating
systems
CORGI and OFTEC
registered*

*Tel: 01223 837774
or
07795 304013*

Thinking of selling or letting your property?



Our Great Shelford office is now open!

01223 800860
shelford@rah.co.uk
rah.co.uk

TIM PHILLIPS & Co Ltd

Accountants

Independent, specialist service for:

> SMALL BUSINESS – SELF ASSESSMENT – PERSONAL TAXATION <

Cart House 2, Copley Hill Business Park
Off A1307 between Wandlebury and Babraham

Tel: **01223 830044**; Email: **Info@TPaccounts.co.uk**
www.TPaccounts.co.uk

Easy, free parking right outside the door

FA Cup Final?...Maybe Royal Wedding?...Hmmm

Shelford School Summer Fair?

...I do!



Saturday 19th May
2.00 - 4.30pm
@ Shelford Primary School

Everyone Welcome!

All proceeds to Shelford School PTA, charity number 1110813
For more info email pta@shelfordschool.org.uk

SHELFORD SCHOOL

Perhaps the most significant decision made by school governors is the appointment of a Headteacher, and this was uppermost in Governors' minds for much of the spring term following Mrs Evans' announcement that she would be leaving. It was gratifying that the advertisement attracted a good field of applicants from which we shortlisted four for a range of assignments and interviews over two days in March. This was quite a tiring process for the governors, and no doubt also for the candidates. School staff and pupils played a key part so all candidates could demonstrate their abilities in such tasks as leading Collective Worship and answering questions from the School Council.

At the end of the process the governors were unanimous in deciding to offer the position to Mr Chris Grey (pictured, with his children), and delighted when he accepted. Mr Grey is currently acting Head of School at St Felix RC School in Haverhill, so is already familiar with the area. He will be in school for several days during the summer term as part of the handover process, and officially becomes our Headteacher on 1 September. We have also successfully filled the other staff vacancies for the summer and autumn term, so are looking ahead with confidence.



The school was, of course, its usual busy self in the run-up to Easter. The last week included two instrumentalists' concerts which provided a showcase for the musical talent in the school. Children played a wide variety of instruments, both individually and as part of the school orchestra. I'm sure many were nervous about performing in front of a large audience of parents, particularly those taking part for the first time, but this is such a valuable opportunity for them and we are grateful to the music teachers for supporting their pupils at this event.

A new feature for the school this year was a Maths Day, which involved a wide range of puzzles and mathematical activities. Then it was the Easter service at All Saints in Little Shelford, led for us this year by Year 5. I hope everyone had a well-earned rest before returning for the summer term.

Peter Ede, Chair of Governors

JO ALEXANDER

Teak & Wicker Garden Furniture and Accessories
Visit our Showbarn or buy online



01954 267 857
www.joalexander.co.uk

Chiropodist David Levy MSSCh MBChh

Home visiting practice

Saturday morning clinic
held at
Billson Opticians,
Sawston

Mobile: 07966136972
Home: 01223 834634

NICK WEBB

CABINETMAKER

FINE FURNITURE, CUSTOM
DESIGNED & HAND MADE
EXCLUSIVELY FOR YOU.

01223 701914
WWW.NICKWEBB.BIZ



Computer Services

For the home or small office

Software/hardware: PC, Mac or tablet

Virus & Malware removal

Network/wireless/broadband setup

Windows 10 Upgrade help

No-fix-no-fee, free consultations
Maximum fee £90 Alan Briggs 833574



Square & Compasses

Home Cooked Food including Sunday Lunch
Outside Seating Area Car Parking
Tel: 01223 843273

The Plough

Open: Mon-Thurs - 3pm to late

Fri -Sun - 12noon to late

Sky Sports BT Sport Great Beers
Tel: 01223 847986



DIARY MAY 2018

Date	Event	Time	Place
3	Parish Council Elections	7am–10pm	Memorial Hall
8	Granta Flower Club	7.30pm	Memorial Hall
9	Cactus Society	7.30pm	Memorial Hall
19	School Summer Fair (page 21)	2–4pm	Shelford School
23	Engage: Falls Prevention (page 37)	2–3.30pm	Library
23	Neighbourhood Plan Meeting: Enhancing our Countryside (page 27)	7.30pm	Stapleford Pavilion
26	Farmers' Market	9am–12pm	Memorial Hall
26	Afternoon Tea (page 7)	2–4pm	Scout Hut

The Country Market is in the Memorial Hall each Wednesday, 8.30–11.30am.

BIN COLLECTIONS



Green and blue bins Tuesdays 1 and 15, Wednesday 30 May

Black bins Wednesday 9 and Tuesday 22 May

Place paper directly in blue bin. Caddies are no longer collected.



POSTAL COLLECTIONS

Locations	Mon–Fri	Saturday
Coppice Ave, Mill Court (Hinton Way)	5.15pm	9.45am
Library, Old Vicarage	5pm	9.30am
High Green bus stop, Stonehill Road	5.15pm	12 noon

POST OFFICE

The Post Office is at Kash Stores, 35 Hinton Way.

Open Monday–Friday 8.30am–6pm,

Saturday 8.30am–12 noon.

Items Royal Mail is unable to deliver (too big, signature required, etc) may be collected from the Royal Mail Depot in Clifton Road, or arrangements made for redelivery.



LIBRARY



Monday 3–7pm, Tuesday 10am–1pm and 2–5pm, Wednesday 10am–1pm, Thursday closed, Friday 10am–1pm and 2–6pm, Saturday 10am–1pm.

SHELFORD TWINNING ASSOCIATION VISIT TO FRANCE, 7–10 APRIL

This visit celebrated the 30th anniversary of the village of Verneuil-en-Halatte being twinned with the Shelfords. Our turn to reciprocate will come next year.

Time and time again, our members said that meeting up with old friends and the chance to make new ones was their abiding memory of the trip. Spending a morning at the local school was a highlight for our children as the French pupils gathered round and tried to make conversation. A visit to the very modern Musée de la Grande Guerre in Meaux was also greatly enjoyed by children and adults alike. In the afternoon, there was a tour of a local cheese factory. The adults were taken to Chantilly where they had a fascinating guided tour of the area, now part of the town, but which in the time of Louis XIV were vast gardens of canals, waterfalls and fountains created from the surrounding marshland by a noted French gardener.



Joining in with family activities and understanding another culture was highly valued by our members. Being able to live as a member of another nation in a private home is an unsurpassed experience. Many of our English party remarked on the generous and expansive welcome we received in Verneuil and the singing of La Marseillaise and God Save the Queen had to be heard to be believed as a small bridge was dedicated along with a plaque to celebrate 30 years of twinning. We had a wonderful celebration over a meal, with toasts and cakes to die for.

The time spent with the French families was remarked on again and again as being a special aspect of our brief visit. As one young child said, '*everything was amazing*', as indeed it was.

A challenge: why not join us in welcoming our French visitors when they come to Shelford from 7–10 July this year? For more details, please see our website www.shelfordtwinning.org.uk.

Fran Forman

Alexander Technique in Trumpington

Improve ease and balance
Alleviate pain and stress

Polly Waterfield MSTAT
Tel. 01223 529763
polly.waterfield@ntlworld.com



The Country Store

*Pet, Equine, Smallholder,
Shooting supplies,
Country clothing,
Wild bird food*

Unit 12a, Sawston Park,
Pampisford, Cambridge

CB22 3EE

www.thecountrystore.co.uk

Tel 01223 837977



Fulbourn Feline Services



*Need somebody to care for your cat whilst you
enjoy a well-earned holiday?
Then look no further than Fulbourn Feline Services.
Your furry friend will be cared for by a
fully-fledged feline fanatic!*

Fulbourn Feline Services Will:-

- Provide 30 minute visits giving your cat company, affection and play.
- Clean and replenish all food/water bowls and litter trays.
- Administer all regular medication and perform basic grooming, as required.
- Open/close curtains and water houseplants.
- Put bins out on rubbish collection day.

Fulbourn Feline Services Is Run By:-

- A trustworthy, local, professional with > 40 years pet ownership experience and > 10 years healthcare experience (human and veterinary).
- References from two consultant surgeons.
- Insured, CRB-checked and NapsUK-registered.

Tel: Sarah on 07900 213245

E-mail: info@fulbournfelines.co.uk

Web: www.fulbournfelines.co.uk

Nigel Power Electrical



Nigel Power

**COMMERCIAL & DOMESTIC
ELECTRICAL SERVICES**

Tel: 01223 845060

Mobile: 07725 044068

Email: nigelpowter@btconnect.com

www.powter-electrical.co.uk

16 Leeway Avenue, Great Shelford, Cambridge, CB22 5AU

DWD Home Improvements

*Your local carpenter and
small builder*

Carpentry, Kitchens, Roof repairs,
Fencing, Painting interior/exterior
Insurance work undertaken

No job too small

Quality service - free quotation

23 years' experience

Local references available

Telephone 01223 872558

Mobile 07855 579802

103a New Road, Haslingfield

Great Shelford and Stapleford Neighbourhood Plan

Enhancing our countryside

Stapleford Pavilion, CB22 5BQ

Wednesday 23 May at 7.30pm

Open meeting to discuss objectives and opportunities to improve public access and conservation in the green belt

All welcome



WOODLAND WALKS AT MAGOG DOWN



Twenty nine years ago when the Magog Down was purchased and converted from arable farmland back to chalk downland, the only trees on the site were those in the old clunch pit of Little Trees Hill, and a small shelter belt running from that peak across to the A1307.

Over the next few years, eight brand new woods were created by planting 24,000 trees:

- Colin's Wood – in memory of Colin Davidson, the then vicar of Stapleford whose vision started the project
- Youth Wood – all planted by school children
- Upper and Lower Memorial Woods – containing trees purchased in memory of family members
- Vestey Wood – to thank the Vestey family for their large interest-free loan
- Villedomer Wood – to celebrate Stapleford's Twinning partners in France
- Magog Wood – to remind us of the mythical Giants who lived nearby
- Rotary Wood – adjoining the car park, donated by the Rotary Club of Cambridge.

Now well grown, most of these new woods (that is, Colin's, Youth, Villedomer, Magog and Rotary Woods) contain footpaths offering walkers

shelter from cold winds and the occasional heat wave, and the opportunity to identify the different the trees – beech, ash (many sadly dying from ash dieback), small leaved lime, yew, oak, wild cherry and hornbeam.



The new footpath through Villedomer Wood was a parting gift from Jon Gibbs, our previous Ranger, who was keen to create such walks allowing people to get in amongst the trees, rather than just walking beside them. We hope that some of our many visitors will now start to enjoy these woodland walks as a variation on their routes, remembering of course to keep dogs on a short lead in all areas by default, except where the signage clearly allows otherwise.

Ongoing maintenance of all these new woods is one of the many land management expenses for the Magog Trust, and is only partly covered by a small grant received each year from the Forestry Commission. Anyone wishing to contribute towards upkeep of the woods can do so either by making a one-off donation, or by becoming a Friend to contribute year after year.

Bryan Davies, Magog Trust
www.magogtrust.org.uk

BOOK REVIEW

THE LEWIS TRILOGY BY PETER MAY



Take an island, its proud inhabitants, its culture and traditions, a fiercely independent population apparently immune to rough weather, then add simmering resentment, ancient grudges and finally a detective returning home to face up to his own flawed character and his past mistakes but committed to solving a murder.

That could be the scene of several detective thrillers (familiar to those who have watched the BBC's *Shetland*) and here it is the Scots-noir Lewis Trilogy, based on the Isle of Lewis in the northern Hebrides.

The Blackhouse, *Lewis Man* and *The Chess Men* follow DI Fin McLeod as he unearths evidence, memories and relationships while unmasking the murderers from the island of his birth.

Reading the first two books in an isolated cottage in Scotland may have enhanced the experience for me, and it may be significant that *The Chess Men*, which I read elsewhere, seemed the least satisfying and unlikely, but I found the first two absorbing and gripping and willingly entered into the world of rain and peat and glowering crofters acting out old grievances – to the extent that a knock at the door would have had me reaching for the poker to defend myself!

Like many fictional detectives Fin suffers a broken marriage and other failed relationships of his own but as a reader I sympathised with him and his aim of solving the murders while striving to stay on the side of right and struggling to be true to the community in which he grew up.

Spend a few minutes before you start by familiarising yourself with the map of the Hebrides and the Gaelic place names; it makes reading and understanding much easier!

Great Value **KASH STORES** **Local Services**

A great deal more from your local store!

General Groceries • Fresh Produce • Confectionery
Instore Bakery • Off Licence • Photocopying
Newspapers • Magazines • Stationery • Lottery
Dry Cleaning • Shoe Repairs • Passport Photos

Full Post Office counter facilities
33-35 Hinton Way, Great Shelford
Tel: 01223 843307

Shop opening times:
Mon-Sat:
7.00am-7.30pm
Sunday:
7.00am-2.00pm

POST OFFICE

Post Office opening:
Mon-Fri:
8.30am-6.00pm
Sat:
8.30am-2.00pm

JACKSON COX
B G STOREY, FBCO

**OPHTHALMIC OPTICIAN
(OPTOMETRIST)**

30a WOOLLARDS LANE
GREAT SHELFORD
01223 840441

Pipe Dreams
PLUMBING

GREAT SHELFORD BASED
**PLUMBER AND
HEATING ENGINEER**

Tel 01223 524531
Mob 07960 868082

www.Pipe-Dreams-Plumbing.co.uk

safe

ARTHAN
FITTED FURNITURE

new showroom
in central Cambridge

local family business with over 16 years of experience, offering
custom made furniture at very competitive prices

29 Hobson Street, Cambridge, CB1 1NL
☎ 01223 968 696
www.athanfurniture.co.uk

LAY ELECTRICAL
Sales and Repairs
Washing machines
Vacuum Cleaners
TV, Video, etc

66 High Street, Great Shelford
01223 842488

LOCKS
**LADIES
HAIRSTYLISTS**
*Professionals
for your hair*

all ages welcome

Tel: 842166
Mob: 07932600824
67a London Rd, Stapleford

WOULD YOU LIKE TO RETURN TO NURSING? IT IS EASIER THAN YOU THINK

Many nurses have allowed their nursing registration to lapse, often for very good reasons such as bringing up a family or following a completely different path. During this time, they are likely to have acquired many skills which are really useful for working in General Practice or the community. General Practice can be a really good place to regain skills and learn some of the more primary care related skills working within a small team.

Perceptions of GP nurses are often very outdated. Nurses now do a lot more than dressings and injections as a much wider range of healthcare is being delivered out of hospital. There are many more opportunities to progress your career and still remain patient focussed. Nurses are able to become experts in management of diseases such as asthma, hypertension and diabetes, as well as travel health or in wound care. GP Nurses also play a major role in health prevention by carrying out immunisations, cervical and health screening. They also promote healthier lifestyles by offering advice on smoking, alcohol and weight. Nurses can also train to become prescribing nurses or Advanced Nurse Practitioners who are able to work more autonomously.

Because there is a shortage of nurses, Cambridge & Peterborough Training Hub are offering support to help nurses return to the nursing register by offering placements in General Practice in the area. The length of your placement will depend on how long you have been out of nursing and it is possible to work as a Healthcare Assistant while gaining some additional skills alongside the Return to Nursing course. Have a look at the short 'Come back to Nursing' films, with some examples of people who have returned to nursing, which can be found at www.comeback.hee.nhs.uk/Real-Stories.

You would have to attend seven study days at university over six months, carry out some online modules and write two essays. You would have support from a university tutor and work placement mentor. There is a small bursary to cover your expenses during training. The next course starts in June.

For more information, please contact me at Jennifer.aston@nhs.net.

*Jenny Aston FRCGP (Hon), Queen's Nurse
Advanced Nurse Practitioner, Granta Medical Practices
Nurse lead Cambridge & Peterborough Training hub
Sawston Medical Centre, London Road, Sawston, Cambridge CB22 3HU*

come back

Supporting nurses
to return to practice

WATER LANE

There's a contradiction at the heart of Shelford life, and it's to do with water. On the one hand, ours is a low-lying parish, much of it less than 20 metres above sea level. So it never took much for water to collect when it rained, and there used to be many areas where water would lie and make the ground damp and even marshy. And yet, our climate is one of exceptional dryness. Here in this part of East Anglia we are blessed (or cursed – it depends on your point of view) with a continental climate of hot summers, cold winters and a dearth of rain. By the time the rain-carrying westerly flows have staggered thus far,



Photo: Helen Harwood

they've shed their load, and we only get the dregs. So shortage of water, particularly in the growing season, can be a problem. A contradiction indeed.

The meadows alongside the river were, and still are, prone to flooding. The land which bordered Cambridge Road on the east was an area of damp meadow, called The Moor or Waste. And when the road was taken over by the Turnpike Trust in 1724, they raised the level of the road to keep the travellers' feet dry, and so it became known as the Causeway. Running through the centre of the village was Water Lane, which ran from Freestones Corner (the junction of London Road, Woollards Lane and Station Road) to the beginning of High Green. The meadows along it – behind the tall Victorian villas – were prone to dampness too. So the village was divided between its areas of drier arable land, and these swampy wastes.

As a result, in 1834, when the landowners of the village set about the process of Enclosure, they didn't just change the way land was distributed among them, they wanted to improve the land too. And so they put in drains to carry away all this water. There were a number of these – several on the arable land, three down the course of Cambridge Road, and one which ran up to Church Street. But there's one drain in particular that I want to talk about.

The Parish Drain, as it came to be known, runs from somewhere in the region of Granta Terrace and takes a course which eventually sees it run all the way to Cambridge and into the Cam, just down from Jesus College. It has always seemed counter-intuitive to me that, being so close to the river, it didn't drain into it. But it doesn't. This drain is not described on the Enclosure Award, so I can only think that the parish's first stab at drainage needed a little subsequent refinement. From its start in Granta Terrace, the drain runs across Woodlands Road, crosses Woollards Lane somewhere near the library, then runs towards Ashen Green, turns, and runs up between Elms Avenue and Ashen Green. Then another turn, skirting the garden of Porch House, across the gardens in Elms Avenue, and across Halatte Gardens. It passes along the drive of Tunwells House on High Green, then turns towards De Freville Road, crosses Granhams Road, skirts Granhams Close and eventually merges into the network of streams and drains which run, parallel with Cambridge Road, to Trumpington. It is joined by water from a spring beside Granhams Farm and from Nine Wells, and once in Trumpington flows along behind Trumpington Road, and alongside the Botanic Garden, until it reaches Hobsons Conduit.

You will probably be thinking, That's funny, I've never noticed it, and that is because, these days, you have to work quite hard to find it, and the reason is that, for much of its length, it is now culverted. When it was constructed, most of its course was across pasture. But since then we've done a powerful lot of building – Ashen Green, Elms Avenue, Halatte Gardens – they've all cut across its course. However, it still has the power to make itself felt. Some years ago, a resident of Halatte Gardens found his garden unaccountably filling with water. The developer had breached the culvert. The water was flowing out, and residents of High Green and Granhams Close were wondering why their stream had run dry.

Well the days are gone when Mr Howard was employed to scour the drain four times every year. More and more bricks and mortar and tarmac have covered the soil. And thanks to the drain, Water Lane is no longer very watery. You probably know it better as Tunwells Lane.

Helen Harwood

REPAIR CAFÉ SATURDAY 2 JUNE

With the support of South Cambs Sustainable Parish Energy Partnership (SPEP), Transition Cambridge and Cambridge Carbon Footprint, 2G3S are pleased to announce our second Great Shelford Repair Café. As last time, it will be held at The Scout and Guide Headquarters, behind the Memorial Hall, Woollards Lane, Great Shelford, from 2pm to 4.30pm on Saturday 2 June.

It's a free event (donations very welcome) where we match amazing repairers with people who need stuff fixing. Bring along the following to be repaired and to pick up repair skills: jewellery (and jewellery cleaning), sewing and fabric repairs (no alterations; and clean items only please), small household appliances and electrical items, knives to be sharpened, computers, mobile phones, bicycles and general bits'n'bobs. This time we are also offering a book repair service, so if you have books with broken spines or damaged/loose pages, we can look at those too.

You can turn up with your broken item on the day, but as before we expect to be very busy so it's best to book it in, either by emailing southcambsrepaircafe@gmail.com or by visiting www.circularcambridge.org/repaircafe/ (where you will find more information about Repair Cafés) and following the links. The repairers are brilliant and can fix most things but there are no guarantees. Lots of tea and cake available of course!

Linda Whitebread
2G3S (Green Groups in the Shelfords, Stapleford and Sawston)

NOTE

The *Great Shelford Village News* is published by the Editorial Committee, whose members are delighted to receive the many regular and occasional contributions that make it all possible. **The Committee accepts such contributions in good faith, but cannot take responsibility for the accuracy of information contained therein.** The Committee, of necessity, reserves the right to amend or reject items, for a variety of reasons. In these cases (unless the changes are minor), every reasonable effort will be made to contact the contributor to obtain agreement.

Editorial Committee

COMPUTER PROBLEMS? CALL EAGLE ANALYSIS



We have 35 years experience and are Sheffield based.

- Need a new computer, laptop, tablet, iPad, printer, digital camera, smart TV? We can advise on the best options and supply and install and transfer existing files.
- Need to set up Internet and network: problems with wireless deadspots? We can sort that for you.
- Dead computer or printer? We can fix it.
- Deleted your photos? We can recover them.
- Got a virus? We can remove it and prevent recurrence.
- Need paper, cartridges? We supply everything.

Call Mike Nettleton on 01223 721366 (M 07905 356468)

e-mail: info@eagleanalysis.co.uk web: www.eagleanalysis.co.uk

SOPHOS
Silver Partner



REGISTERED
PARTNER

Ontrack Data Recovery
Authorized Partner



Cambridge Cat Clinic

Feline-only veterinary clinic,
providing stress free care for both
you and your cat.

t: 01223 88 07 07

e: info@cambridgecatclinic.co.uk

www.cambridgecatclinic.co.uk

Cox's Drove, Fulbourn, Cambridge
CB21 3HE



Feline better!

Gleamers Household & Commercial Cleaning
EST. 1985. ISO 9001:2015. 100% SATISFACTION GUARANTEE

*Outstanding quality cleaning for all your cooking
appliances at competitive rates*

*Kitchens, ovens,
extractors, grills, hobs & ovens & cleaning solutions*

*Refrigerators, freezers,
ice makers & just anything & made every time*

CALL NOW ON: 01440 761515
WWW.GLEAMERSOFFENCLEANING.CO.UK
12 Wootton Rd, Havering, Essex. CB9 0DD

Your local professional and conscientious oven cleaner

AM ARCHDEACON MOTORS

Archdeacon Motors
32 Cheddars Lane
Cambridge CB5 8LD
Tel: 01223 315670
Fax: 01223 354713

www.archdeaconmotors.co.uk

matt@archdeaconmotors.co.uk

Servicing and Repair
on all makes and
models.

Loan car available.

Fixed price repairs.

MOT STATION -
free re-tests.

Established 32 years.

Quality work always

at competitive prices.

Free collection and
delivery.

THE WALKERS PARTNERSHIP SOLICITORS REDUCED RATE WILL OFFER

Reduced rate wills are available every week day
from 8.00am until 6.00pm, and on Tuesday evenings until 8.00pm,
by appointment only.

Also on selected Saturday mornings throughout the year - please
contact us for further details.

Reduced rates are:-

Double Wills - £280.00 plus VAT Single Will - £150.00 plus VAT

HOME VISITS ARE ALSO AVAILABLE AT NO EXTRA CHARGE
WITHIN A 20 MILE RADIUS OF ROYSTON.

For more information please contact:-

Fish Hill Chambers, 2-3 Fish Hill, Royston, Herts, SG8 9JY

Tel: 01763 241121

t.donnellan@walkerspartnership.co.uk

Rothwell's Carpet Cleaning

**Carpet, Upholstery
Rug Cleaning**

Family firm since 1993

Truck mounted

equipment for deep
cleaning

Great customer service

We move the furniture

01223 832 928

Stapleford History Society

I REGRET TO INFORM YOU

8 May 2018

Stapleford Jubilee Pavilion at 7.45pm

At 07:30 on 1 July 1916 the 11th Suffolks, known as the Cambridgeshire Pals, were the first over the top in the Battle of the Somme. Of the 850 who went over, 527 were killed, wounded or missing, mostly within the first ten minutes. One of these men was 22 year old Lt. Robert Quilter Gilson – Trinity man and great friend of JRR Tolkien.

Lesley Ford and Mike Levy will talk about their recent project to commemorate these 'sons of Cambridgeshire', alongside readings from Gilson's many letters home. We are delighted to say that we will also be joined by Julia Margretts, great-niece of Rob Quilter Gilson and Shelford resident.

Admission free for History Society members, or £3 on the door.

SAWSTON FUN RUN

SUNDAY 13 MAY

Registration is now open, so sign up online via the website or pick up an entry form from Sawston Village College or Cambridge Building Society.

The major project for 2018 is to support a YMCA initiative to provide



relationship counselling to children in the primary schools in our area. In addition, we will be supporting their work with particularly vulnerable individuals by funding a room in the

Cambridge hostel. Another major beneficiary is Addenbrookes Charitable Trust with the purchase of a CO₂ ventilator module for the Neonatal Intensive Care Unit at the Rosie.

As usual many organisations working for the local community will also benefit.

We always need help from local citizens who are prepared to give a couple of hours to support this great community event, so if you are prepared to help in this way, please call Ian Chamberlain on 01223 872243 or email enquiries@sawstonfunrun.co.uk.

Go to the website for the latest information: www.sawstonfunrun.co.uk.

Ian Chamberlain



SHELFORD AND WHITTLESFORD RAIL USER GROUP

Wednesday 9 May 7.30–9.30pm

The Red Lion, Station Road East, Whittlesford Bridge, CB22 4NL

- Do you use either Shelford or Whittlesford Parkway stations?
- Do you have a view how they should be managed or maintained?
- Do you have a good idea on how to make them better?
- Are you part of the station adoption group?
- Would you like to know more about what is planned for our railway?

Come along to our meeting in May to express your views and hear about plans for the masterplan process for Whittlesford Parkway.

For more information go to www.sawrug.org.uk



at Great Shelford Library

Wednesday 23 May 2–3.30pm

Falls Prevention

A speaker from Everyone Health will talk about preventing falls

Collect your FREE ticket from the library or call 0345 045 5225

Donations for refreshments welcome

GRANTA FLOWER CLUB

At the April meeting we enjoyed an innovative floral presentation by Heather Carpenter from Dullingham. Designs included a picnic hamper and naturalistic wedding bouquet. Visitors are most welcome. Meetings are on the second Tuesday of each month at 7.30pm in Great Shelford Memorial Hall. We look forward to welcoming you. Please contact our Secretary, Jean Hore, on 01223 843796 with any questions.

Alison Purnell

GARDEN CLUB

Garden writer and radio presenter Geoff Hodge spoke about controlling pests and diseases.

Some plant pests have very specific timings and life cycles and if their appearance is seen early and dealt with quickly, an outbreak can be prevented from getting out of control. Most pests, particularly sap sucking aphids, breed very quickly. To avoid introducing pests the undersides of leaves, leaf joints and roots should be checked before purchasing plants.

Improve the soil by digging in compost and keep it well watered when planting to ensure that plants become well established, as any stress will make them more susceptible to pest and disease attack. Plants should be fed regularly during the growing season. Seaweed extract is a good tonic and if plants are looking sick, a foliar feed can be applied. This has been shown to make the plant appear blue to aphids, which has the effect of making it less visible to them.

Barrier methods Horticultural fleece can be placed over crops to prevent carrot root fly and the cabbage white butterfly laying their eggs. Plants can be mulched with 2cm of sharp grit to prevent wine weevils from laying their eggs in the soil around the plant.

Traps Pheromone traps around apple trees will catch male codling moths, preventing them from reproducing. Raspberry beetle traps can catch the insects before flowering.

Biological control Aphid and whitefly can be controlled in greenhouses by hanging cards of parasitized whitefly pupae containing the *Encarsia formosa* wasp above the plants. Vine weevil grubs can be controlled by applying a powder containing microscopic nematode worms, dissolved in water, to the soil once it has warmed up during April/May. Lawn damage caused by cock chafer grubs can also be treated using this method during late summer and again in spring.

Pesticides Contact insecticides are available containing naturally occurring fatty acids, which are effective against small soft-bodied pests, such as whitefly, mealy bug, aphid, leafhopper, spider mite and thrip. These are sprayed on the tops and undersides of affected leaves. Chemical systemic insecticides on the market are effective for up to two months. Slug killer containing ferric phosphate is an effective safe alternative to traditional slug poisons. Mats impregnated with copper shards can be placed around plants and have the dual purpose of deterring slugs and blocking weed growth.

Fungicides Chemical fungicides (also available combined with insecticide), are applied as a preventive measure but cannot be used on edible crops.

Ultrasonic devices These are available to deter foxes, rabbits, cats, rats and mice. Moles can be deterred by the application of male urine to their hills and runs.

Helen Chubb

Note: Apologies from the Editorial Committee for incorrectly editing notes on pruning. The correct wording should be: *The general rule is that plants that flower early in the year, do so on the previous years' growth so to avoid losing any flowers, pruning should be done after flowering has finished.*

P.O.R.T.R.A.I.T.S



Paintings & Drawings
of Adults & Children

Professional Portraitist
01223 846330
camopenstudios.co.uk
perveenart.com
perveentayabali@gmail.com

Perveen Tayabali

STEVE

the PLUMBER

Steve the Plumber
is a local plumber
with a friendly,
helpful and reliable
service.
Small or larger jobs
undertaken.
Competitive rates.

Please call 07803922517
or email
steve_the_plumber@me.com

Day Dec

Painting & Decorating



Free estimates

7 Stulpsfield Road
Granchester, Cambridge
CB3 9NL
Tel: 077 8087 5044

FREE Estimates & Advice



- All Driveways & Block Paving
- Site & Garden Clearance
- Driveway Cleaning & Sealing
- Fencing, Trellis Work & Decking
- Patios & Paths
- Turfing & Seeding
- Concrete Crushing
- Grab Hire & Digger Hire

amsbuildingandlandscaping.co.uk

OFFICE: 01638 721 893 | SITE: 07789 261 266

ANGLIA

TREE CARE



A O'Connor

Tel: 01223 424454

23 King Street
Cambridge CB1 1LH



Tree surgery
Stump-grinding
Hedge maintenance
Fully qualified & insured

All work carried out to British
Standard BS3998

Member of the guild of
master craftsmen

www.angliatreecare.co.uk Email: info@angliatreecare.co.uk

SHELFORD RUGBY CLUB

GAMES WITHOUT FRONTIERS ... RUGBY

VERBAND BADEN-WÜRTTEMBERG EXCHANGE

On Maundy Thursday the Shelford U13 and U14 players, and their parents, waited anxiously for the arrival of the RBW tour bus bringing the players from rugby clubs across Baden-Württemberg to the 19th Shelford-RBW exchange.



The exchange takes place as part of the Cambridge-Heidelberg Partnership and after their long journey of over 12 hours in the coach, the 39 RBW players were quickly introduced to their guest families before being whisked into the city for a reception hosted by the Mayor, Cllr Pippas. After the warm welcome by the Mayor, alongside other groups taking part in the Easter exchange, the RBW players returned home with

their host families for some well-earned sleep.

The first day in Shelford started with some joint training with the Shelford 1st XV. Both the RBW and Shelford youth players really appreciated the session and had a chance to get to know each other a bit better. As there were no rugby matches within reach over the weekend, the afternoon was spent at the Abbey Stadium cheering on Cambridge United in their match against Crawley Town. The RBW tour kit was a good match for the home colours and we got to meet some of the Cambridge United players before the match.

On Saturday the rugby started in earnest with Shelford vs RBW matches for both the U13s and U14s. The German sides showed some excellent defensive skills and played some great rugby but the home advantage eventually led to wins for both Shelford squads. After a hearty match tea for players and spectators, the afternoon was spent doing various activities with their host families while the coaches met to discuss international rugby strategy over a few refreshments in the Blue Ball in Grantchester. It was here that a fiendish plan was hatched that was put in play at 11am the following morning.

As the players and parents turned up at Shelford for their second day of matches, we had to tell them that we had realised that we had played too much rugby within our allotted time period and we would have to postpone the matches to Monday as this was the start of a new week. So as not to waste the day we had decided that the players would wash all of the parents' cars in the car park. The simultaneous translation into German meant that the groans from all the players reached us at the same time. The players were extremely disappointed and so we had to ask them if anyone knew what the date was. It

seems both English and German players fell equally for the April Fool but all soon cheered up when they realised they would be able to play rugby after all.

Sunday's games were superb, with some really tough rugby played by both age groups and excellent skills shown by both sides. The Shelford U14s were joined by Biggleswade players and put out a Barbarian's side as well as a Shelford side. Every single player from all three clubs showed their best; it was a joy to watch the matches and all the coaches were extremely proud of the performance of their players. The matches were followed with a BBQ for all the players and supporters and some games – the most popular of which was Zorb-ball. Some very tired players then went home to their host families for some well-earned rest.



Shelford Rugby Club and our visitors from Baden-Württemberg

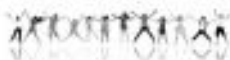
Monday was spent visiting the City. Luckily the rain held off for most of the day allowing some sightseeing and souvenir shopping before we all met for a final meal at Shelford Rugby Club to celebrate what has been a fantastic weekend, not just of sport but of building strong friendships.

We would like to thank Cambridge City and the Cambridge-Heidelberg Partnership for a very warm reception to kick off the Exchange Weekend and the RBW Coaches and Team Admins for organising the trip to Shelford and bringing a great group of youth rugby talent with them. We would especially like to thank the Shelford RC parents for hosting the visiting players and supporting us over the weekend – our visitors all commented on the friendly, welcoming atmosphere that you created – just what youth rugby should be about.

Here's looking forward to a fantastic 20th anniversary exchange next year in Heidelberg! Check out our Social Media for more information about what's happening at the club!

Anna Biard

Cambridge Neuropsychology



Dr Catherine Harter (Clinical Psychologist, Paediatric Neuropsychologist) offers assessments and intervention for children and young adults

Specialising in specific learning difficulties: reading, maths, attention, memory and problem solving; neurodevelopmental conditions, emotional and behavioural concerns

www.cambridgeneuropsychology.co.uk
admin@cambridgeneuropsychology.co.uk
 07546 972012



Self Storage in Sawston

Clean, Dry & Secure. 24/7 Access

www.MegaStorage.co.uk

01223 833 777

**The Most Thorough
Cleaning Ever Seen
or it's FREE**

ART OF CLEAN
 A CLEAR DIFFERENCE IN QUALITY

WE CLEAN:

- Carpets,
- Upholstery & Leather
- Fine Rugs
- Tiles & Stone

"Your company provides an excellent reliable and friendly service and is very business like in its dealings. Excellent, punctual advice and service."

Mrs Davis, Great Shelford



-10%
 Discount to all
 new customers

Laurence & Pierre de Wit

**For a Free "Audit
& Quotation"
call now:**

01223 863 632

www.artofclean.co.uk

THE GOG

FARM SHOP
 ESTD - CAMBRIDGE - 1919

BUTCHERY · DELICATESSEN · GROCERY · CAFÉ

WWW.THEGOG.COM

FOOTBALL CLUB

With the British winter finally calming down, both teams had a full month of fixtures for the first time since the turn of the year. It was four straight impressive wins for the first team, three of which were away from home, with 14 goals scored and only one conceded. This keeps them hot on the heels of league leaders West Wrating, with the hope that the title favourites may still slip up. Hard fought wins home and away to Eaton Socon (3–1 & 2–0) were followed by more comfortable wins against Sawston United (5–0) and Hemingford United (4–0).



The reserves' first two games of the month were both home league encounters and highlighted their inconsistency this season, with a disappointing 3–1 defeat to lowly Linton Granta A, followed by an impressive 7–2 win against a Papworth team who usually get the better of us. The team already have a congested fixture programme, which became even more daunting when over the space of three days they progressed in two cups. Their Bambridge Cup campaign started with what might have been expected to be a comfortable home tie against Sawston Rovers Reserves from two divisions below them, but when the game had to be switched to Sawston because of ground unavailability it turned out to be anything but! On a very poor pitch in a typical local derby and in fading light the lads finally prevailed on penalties after the game ended 1–1. It was opposite expectations in the Cambridgeshire Junior Challenge Cup semi-final, with a visit to West Wrating Reserves who sat second in the league above them. The team responded in magnificent fashion however with a 3–0 victory, to set up a final against FC Parson Drove, who play in the Peterborough & District League. It was back to the league for their final game and a creditable 2–2 draw away, to promotion chasing Mott Macdonald, ended a very good month.

There are still plenty of home matches left on most Saturday afternoons (kick-off 3pm) so why not come along and support your local football club. Refreshments for mums, dads, little ones and older ones are on sale in the pavilion during 1st team matches from 2pm onwards. The clubroom above the village hall will be open for a drink after games. Everyone is welcome.

Terry Rider, Chairman



CHARTERED
CERTIFIED
ACCOUNTANTS

Do you want more control over your business accounts, or want to organise your personal tax situation more effectively?

We are a friendly team of qualified accountants who can help you reach the potential of your business and give you expert professional accounting and tax advice using the latest technology to work for you in achieving your goals.

We can deal with all matters relating to business tax and accounting including online bookkeeping, VAT and PAYE matters. Bespoke all inclusive packages are available from £145 plus vat monthly.

Private clients can be confident that we will deal efficiently with tax return preparation and all aspects of tax planning.

To arrange an informal chat or a meeting
please contact us at:

Quern House, Mill Court, Great Shelford, Cambridge, CB22 5LD

T: 01223 506533

F: 01223 363810

E: hello@day-accountants.com

W: www.day-accountants.com

Pilates

Friendly daytime classes

**Johnson Hall
Stapleford**

Elaine Westwick

www.movementspace.co.uk

01223 700232

Creaky bodies welcome

Register of Exercise Professionals

Bespoke Curtains & Blinds ...



Sue Crow Tel: 01223 836498

Email: sue@suecrowcurtains.com

www.suecrowcurtains.com



Technical Moves
Recruitment Specialists

Architecture,
Building Services,
Civil Engineering,
Property & Surveying

01223 845333

technicalmoves.com

34A Woodlands Lane, Gt. Shelford

D Hatter The Gas Specialist



Carbon Monoxide Kills
75% of last years poisonings
were due to lack of servicing!

D Hatter, specialist in servicing,
repairs and installation of
DOMESTIC gas appliances
including boilers, fires
and cookers.

Improve efficiency, save fuel,
give your central heating
system a new lease of life,
have it POWER FLUSHED.

t: 01223 844886
m: 07747 444 435
e: davidhatter1@aol.com
w: thegaspecialisttd.co.uk



CRICKET CLUB

At the time of going to press, we have still not started the season but it is imminent and we are looking forward to the new season and net training sessions have been well attended.

We are looking for new players for our adult and youth teams. Our adult First team play in the Whiting & Partners League and will play home games just for this season at Cokenach Cricket Club, Division Two. Our Seconds are in CCA, Junior League and will play home games at Great Shelford, Division Two North and our Thirds are in CCA, Junior League, Division Four West, playing home games at Stapleford.

We have youth teams at under 11, under 13 and under 15 levels, so parents, if you have boys and girls who want to take up cricket or join us to develop their skills, contact me either by email, brian_higgins50@hotmail.com or telephone 07557502840.

Brian Higgins

WHAT'S ON IN MAY

A round up of what's on at some of the venues near us. For more information, times, ticket prices and bookings, please contact the organisation. Please note that this information has been taken from websites and can be subject to change and events may already be fully booked.

CAMBRIDGE ARTS THEATRE

1–5	<i>A Streetcar Named Desire</i> by Tennessee Williams
8–12	<i>Dr Jekyll & Mr Hyde</i> adaptation of Robert Louis Stevenson classic
14–19	<i>Birdsong</i> based on the novel by Sebastian Faulks
20	<i>Stacey Kent</i> live in concert
22–26	<i>Love from a Stranger</i> by Agatha Christie
28–2 June	<i>The Play that goes Wrong</i> returns following sell-out runs in 2017
Telephone: 01223 503333 Web: www.cambridgeartstheatre.com	

SAWSTON CINEMA

24	7pm	<i>Goodbye Christopher Robin</i>
Telephone: 01223 712825 Web: www.sawstoncinema.org.uk		

SCOTSDALES

9	6–8pm	<i>Summer Workshop</i> with Cambridge Flower School
30	10 or 11am	<i>Caterpillars and Butterflies paper craft fun</i> Ages 2–5
Telephone: 01223 842777 Web: www.scotsdalegardencentre.co.uk		

STAPLEFORD GRANARY

2	6pm	<i>Clarinet Choir</i> summer term commences
8	7pm	<i>Folk Ensemble</i> summer term commences
17	7.45pm	<i>Come and Sing</i> with Lucy Barlow
Telephone: 01223 849004 Web: www.staplefordgranary.org.uk		

UNIVERSITY OF CAMBRIDGE

10	6.30pm	Presentation: <i>Fair and Affordable Housing by 2027</i> (booking required). Part of the imagine 2027 series of events – see imagine2027.org.uk for details
11	8pm	Cambridge University Wind Orchestra: a special concert celebrating the orchestra's 30th Anniversary
13	2.30pm	Free concert at Madingley Hall, featuring works for saxophone and piano
20	7.30pm	Cambridge Philharmonic: <i>On the Waterfront</i> . Music marking the centenary of Leonard Bernstein
For information on these and other events see www.admin.cam.ac.uk/whatson		

WANDLEBURY

1	5–6am	<i>May Day Morris Dancing</i> with the Devil's Dyke Morris Men dancing to greet the sun rise
8	10.30am	<i>Wild Flowers In Spring Walk</i>
23	2–3pm	<i>Orchard Walk</i>
29	10.30am	<i>If You Go Down To The Woods Adventure</i> with Vital Spark Theatre storytelling for ages 2–6
29	12pm	<i>Nature Puppets</i> workshop for ages 6–11
Telephone: 01223 243830 Web: www.cambridgeppf.org		



COMING UP IN JUNE

Dates for your calendar. Look out for full details in the next issue of the *Village New*.

16	3.30pm	SSYI Summer Garden Party
20	7.30pm	Great Shelford Parochial Charities meeting to discuss affordable housing in Great Shelford

Care For Trees



Qualified
Reliable
Insured
Affordable

For a free quote call Mike
Wallman on 01223 846390 or
email info@carefortrees.co.uk

FAMILY **Barker Bros** BUTCHERS



Now
open later till
6pm
Wednesdays
& Fridays

QUALITY, LOCAL MEAT FOR EVERYDAY

43, High Street, Great Shelford
Tel: 01223 843292 www.barkerbrosbutchers.co.uk

J M R Electrical



APPROVED
CONTRACTOR

**Electrical
Contractor**



DOMESTIC
INSTALLER

All Domestic, Industrial &
Commercial work undertaken

21 Ashen Green, Great Shelford, Cambridge
Email: jmr.electrical@hotmail.com
Tel: (01223) 844680 Mobile: 07766 68 38 86

**QUALITY BESPOKE
PICTURE FRAMERS**

**SIMON ROBINSON
& SON**

Professional, Friendly Service
Over 25 years experience

Wide Selection of Frames
Conservation Materials Used
UV Protective Invisible Glass

Artwork/Photography
Needlework/Tapestry
Oil Paintings and
Canvases Stretched
Unusual Objects Framed
Made to Measure Mirrors
Limited Edition Prints Available

Tel. 01223 873123

Opening Hours:
Tues-Fri - 9am-5.30pm
(Saturday - By Appointment)

www.robinsonframes.co.uk
lester@robinsonframes.co.uk

STUDIO 6, PENN FARM,
HARSTON RD,
HASLINGFIELD, CAMBRIDGE.
CB23 1JZ
(AMPLE PARKING)

L Travers Plumbing

Lee Travers

Plumbing and Heating Engineer

For all your plumbing and heating
requirements

With free quotations

l.travers971@btinternet.com

49 Granta Road Sawston, CB22 3HT

01223 836268 / 07973 298914



HOW TO CONTACT GREAT SHELFORD VILLAGE NEWS

We are pleased to receive articles, letters and notices for community events for consideration. Please send by email (preferably as a Word document), or send paper items to Judith Wilson (see below). The copy date is usually the second Friday of the month. See the *Next Issue* box for next month's date.

General enquiries and articles for publication: gsvneditorial@gmail.com

Non-email contributions should be delivered to Judith Wilson, 11 Elms Avenue, Great Shelford, CB22 5LN.

Commercial advertisements are for a 12-month period, renewed in August. There is usually a waiting list so if you would like to advertise please email gsvnadverts@gmail.com

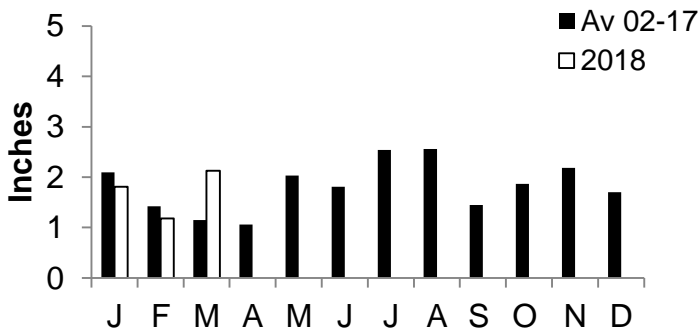
For guidance please note that an article of around 400 words, without a photograph, will fill a full page. Advertisements for events work best as a half page (half A5) in landscape format.

Subscriptions 01223 842993

General Enquiries 01223 842553

Editorial Committee Lorraine Coulson, Duncan Grey, Bridget Hodge, Marjorie Smith, Judith Wilson.

Great Shelford Village Rainfall 2018



From data supplied by Angus Campbell

LOCAL ORGANISATIONS

2G3S	Linda Whitebread	843438
Badminton (Little Shelford)	Rosie Cranmer	513572
Bowling Club	Jill Whaley	845310
Brownies, Guides, Rainbows	Lisa MacGregor	843021
Bunch – Feast	Duncan Grey	842191
Carpet Bowls	Margaret Kelly	473520
Citizens Advice Bureau	Cambridge	0844 8487979
Community Association	(for booking Memorial Hall) Sheila Tilbury-Davis	844384
Country Market	Dorothy Doel	843946
Cricket Club	Mrs M Ellum	842394
Darts League	Mr D Matthews	845287
Football Club	Terry Rider	01354 680661
Free Church	Iris Considine	842181
Friends of Shelford Library	Daphne Sulston	842248
Garden Club	Helen Chubb	845032
Great Shelford Friendship Club	Cheryl Mynott	845435
Health Centre	Ashen Green, Great Shelford	843661
Mobile Warden Scheme	Jackie Noble (Warden) 700920	Jenny Morris (Chair) 846332
Parish Church Bell-ringers	Ann Smith	577980
Parish Church Community Room	Mary Lester	842411
Parish Church Friends	Bob Doel	843946
Parish Church Sunday Club	Joanne Staines	07790 415732
Parish Churchwardens	Dianne Fraser 562731	Stella Nettleton 832290
Parochial Charities	Mary Lester (Clerk to the Trustees)	842411
Police	Non-emergency number	101
Rainbow Pre-School	Alison Tomlin	07985 216603
Royal British Legion	Mark Chennells	891817
Rugby Club	Colin Astin	842154
Sawston Sports Centre	The Village College	712555
Scouts and Cubs	Jillian Hardwick	840066
Scout & Guide HQ	Jenny Grey	842191
Shelford & Stapleford Men's Assoc.	Chris Everitt	846984
Shelford & Stapleford Strikers	Derek White	561753
Shelford Primary School	Alison Evans (Headteacher)	843107
Shelford Support Group (transport to hospital, etc.)	Biddy Wilkinson	843856
	John Dibnah	842054
	Rosie Cranmer	513572
	Pat Legge	843275
	Carol Bard	571380
Sunnyside Preschool Stapleford	Jane Doyle	707817
Stapleford Choral Society	Adam Pounds	843468
Tennis Club	Victoria Roles	07747 748891
The Arts Society South Cambs	Sheila Tilbury-Davis	844384
Twinning Association	Penny Pearl	842483
U3A (Sawston Branch)	Mr D Cupit	871527
WI	Vanda Butler (Secretary)	561053
Youth Initiative	Zac Britton	07599 024210
Websites: greatshelfordparishcouncil.gov.uk/ and greatshelford.info		

Beach holidays, City breaks, Honeymoons, Weddings abroad,
Adventure holidays, Ski, Cruise, Tailormade trips, Flight only,
Car hire, Airport hotels and parking and much more...

CHERYL HARRADINE

Travel Counsellor

01223 842670

cheryl.harradine@travelcounsellors.com

www.travelcounsellors.co.uk/cheryl.harradine



Travel Counsellors ensures
complete financial protection
on every booking

travel counsellors



Rainbow Pre-school

A unique place to play and learn in Shelford



A caring community pre-school
in Shelford for 2-4 year olds
Open Mon-Fri from 9am to 3pm
(term time)

For more information visit
www.rainbowshelford.co.uk
or contact
enquiries@rainbowshelford.co.uk

Tel: 07985 216603

Manager: Allison Tomlin

Is your Conservatory too HOT
in Summer & too Cold in Winter?



Cooler in summer
Warmer in winter
Less noise
100% airtight
A choice of floor or glass

01223 782362

Cambridge Roofing & Glazing Ltd
www.cambridge-roofing.co.uk

WATERLILIES

SKIN • VPL LASER • BEAUTY

01223 844700

www.waterlilies.org.uk

2d Dolphin Way, Off London Road, Stapleford, CB22 5DW



CAMBRIDGE
ELECTRICAL
services ltd



Domestic, Commercial, Industrial & Agricultural

For all your electrical installation, inspection & testing
and repairs, contact us for a free no obligation quotation.

Call: 01223 430 430

Email: Enquiries@cambridge-electrical.co.uk

Website: www.cambridge-electrical.co.uk

Celebrating over 25 years in business.

Willow Tree

All aspects of painting,
decorating & home
improvements

- Exterior & interior painting & decorating
- All gardening needs
- All styles of fencing, etc

Contact Dean on

01763 232757

07906 531518