

Great Shelford VILLAGE NEWS

VOL XVII No 11

AUGUST 2016

PRICE 40p

Hear all about the Feast



The Samskara workers provided extra help at the Feast this year.
Photograph by Peter Wilkinson

Waiting at the Gates

CONTENTS			
Parish Council Meeting	1	Summer Story Time	25
Post Office	4	How to Contact the <i>Village News</i>	25
Planning Applications	5	Arthur Rank Shop	27
County Council	7	Shelford Feast Report	28
Sawston Adult Education	8	Book Review	31
Where to buy the <i>Village News</i>	8	Waiting at the Gates	33
Heidi Allen	10	Botanic Gardens	36
Playscape	12	Shelford Garden Club	36
Art Circle Exhibition	12	Tennis Club	38
Parish Church	14	Rugby Club	38
Free Church	18	Cricket Club	40
Shelford School	20	Country Market	41
Next Issue of the <i>Village News</i>	20	What's On	42
Diary	22	Rainfall	44
WI	22	Editorial Note	44
Photos for the <i>Village News</i>	23	Local Organisations	
Engage at the Library	25		

GREAT SHELFORD PARISH COUNCIL								
CHAIRMAN		Mike Nettleton	721366	VICE CHAIRMAN		Bridget Hodge	842553	
CHAIRMEN OF SUB-COMMITTEES								
Cemetery and Allotments		Helen Harwood	840393	Highways		Mike Nettleton	721366	
				Pavilion and Recreation		Malcolm Watson	844901	
Planning		Bridget Hodge	842553					
MEMBERS								
Stephen Chittenden		07801 207627	Ben Shelton		841085	Simon Talbott		847068
David Coggins		842598	Peter Fane		843861	Charles Nightingale		844763
Barrie Ashhurst		07803 001985	Angela Milson		841100			
CLERK TO THE COUNCIL								Mike Winter 07870 807442 parishclerkgreatshelford@gmail.com
COUNTY COUNCILLORS								
Gail Kenney			211547	Tony Orgee			891464	
DISTRICT COUNCILLORS								
Charles Nightingale			844763	David Whiteman-Downs			845954	
Ben Shelton			841085					

GREAT SHELFORD PARISH COUNCIL

Extract from draft Minutes of the meeting held on 18 May 2016

PUBLIC SESSION

Two members of the public were present.

- They expressed many strong reasons to maintain a Post Office within the village for the use of all surrounding villages and requested that the Parish Council use every possibility available to achieve that objective. The Chair assured the public attending that all opportunities were being explored and would update on progress when information was publicly available.
- Concern for the Library status was raised. In response, County Cllr Tony Orgee stated the Great Shelford Library was not at risk as he had said at earlier meetings.

MINUTES FROM PREVIOUS MEETING

Minutes of the meeting of 18 May 2016 were confirmed and signed by the Chair.

MATTERS ARISING

No matters arising

REPORTS FROM ELECTED REPRESENTATIVES

District Council: District Cllrs Ben Shelton and Charlie Nightingale reported that:

- South Cambridgeshire District Council website had listed recognised and approved Handyman services for public use.
- A Parish Council request to identify the process of reinstatement where verges have been damaged by property developers was referred directly to the Planning Officer. In future it was recommended that the issue of reinstatement could be made a condition of planning permission.
- Parking enforcement in the Village was being considered with Cambridge City, with the potential to share City Traffic Wardens. Cllr Charlie Nightingale to continue discussions on possible collaboration.
- Cllr Charlie Nightingale has arranged a contribution from the Shelford Support Group of £400 to the Parish Council for the provision of a defibrillator, positioned in Tesco. The Parish Council will purchase this and any additional cost to be investigated as a grant or Parish Council funded.

County Council: Cllr Tony Orgee reported that:

- Devolution discussions continue with combined Cambridge and Peterborough proposal.
- Access to Cambridge Strategy could provide auto number plate recognition. This is likely to be reviewed from July to September 2016.
- The City Deal consultation will be available on the website to 1 August 2016 and there will be a local exhibition at Great Shelford Memorial Hall on 21 July.
- The Post Office had developed their facility in Harston and he saw no reason why they should not adopt the same considerations in Great Shelford.

REPORTS FROM STANDING COMMITTEES

Highways: Mike Nettleton reported that:

- The main work programme is now behind the proposed schedule due to Cambridgeshire County Council delays. The issues had been escalated. It was still hoped, however, to implement the main work programme over the October half term holiday period.
- At the Highways Open Meeting held on 14 June regarding next year's priorities, the following were identified for review:
 - parking around the Railway Station,
 - widening of pavement in Woollards Lane,
 - additional Zebra crossings at Scotsdales and Davey Crescent.
- Full report for June circulated.
- It was agreed to progress with the programme at a cost of £40,093, which was within the 2016/17 Budget of £50,000 less LHI (Local Highways Initiative) Grant of £10,000.

Police Liaison: Cllr Barrie Ashurst reported that cybercrime is on the increase and three Police Community Support Officers (PCSOs) are being trained to assist in combating this. More time is being spent with speedwatch teams and Specials are being trained in the use of speedguns.

The proposal to continue support for the parking PCSO patrol was carried unanimously. This is subject to Inspector Southerland advising that the scheme continues to be available.

Playscape Liaison: In the absence of Cllr Simon Talbott, the update was given by Eleanor McCrone from the Playscape Working Group (PWG).

- In the year since starting the Group, funding had reached £23,000, with the target objective still at £200,000.

- Fundraising events planned include Abseiling from the Church Tower and reinstating the Shelford Fun Run in 2017.
- Review of the Master Plan had raised some alternatives but the architects felt they could all be overcome to everyone's satisfaction.
- The next step was to hold a provisional Pre-Application Planning meeting (no cost) with Planning Officials to establish any potential planning difficulties. The Parish Council agreed that the architects should attend the planning review at a cost of £500. The PWG to progress and keep Parish Council advised, with a Parish councillor attending any Pre-Application Planning meeting.
- When planning considerations were included in the Master Plan, the Parish Council would then consider the adoption of the Master Plan and progression to the detailed design stage.
- SSYI had offered to provide free labour to start some development of the Copse area under guidance of Daniel Lee, Sterling Gardens, at a cost. This was postponed for review until after completion of the Riverbank work due to safety concerns.

Additional Parish Councillors: Five applications had been received, one subsequently withdrawn, for the three vacancies. An Extraordinary General Meeting is to be called specifically to review and receive personal statements from the four applicants.

Pavilion: Mike Winter reported that the re-staining of the players' corridor floor had been completed; the work on the roof for the cricket ball catch netting had been started; The Shelford Feast would be using the Village Hall car park for toilet truck parking again this year – Cllr Charlie Nightingale has checked the suitability of discharge into the drainage system.

Riverbank: From the six received, Five Rivers quotation of £25,174, was recommended by the evaluation panel and this was passed by unanimous vote. It is subject to grant approval, reference and company checks.

Great Shelford and Stapleford Neighbourhood Plan: The joint village activity is progressing and a fund for the additional work has been agreed. The Council agreed to contribute £2,000 to the Joint Account.

Parish Council Website and Emails: Chair Mike Nettleton advised the Parish Council that due to unresolved security issues with the current Gmail account, it was advisable to acquire and establish a domain name as *greatshelfordparishcouncil.gov.uk*. This would provide for multiple councillor email addresses and a directly controlled website. The costs to date of £125 for the domain name and hosting of £95.40 per year were unanimously approved.

FINANCE

14 accounts, totalling £7831.03, were approved for payment.

CORRESPONDENCE

Aggressive dogs on Westfield Road and the Rugby Club path and the window above Tucker Gardner are considered Police matters and outside of the Parish Council remit. Anglia Water Private Pumping Stations to be taken over from October 2016, with all maintenance costs – no action other than advice.

MATTERS RAISED FOR FUTURE CONSIDERATION

- Critical Succession and Critical illness proposals are to be reviewed.
- The communications policy for review of Council and Committee Minutes, draft, final, issue process timescales and issue method/location.
- The update on the proposal to disperse costs of street lighting to local residents for 2016/2017.
- Presentation from Network Rail on footbridge proposal and frequency of barrier closure to be requested?

Note. Full copies of the Minutes can be seen at www.shelford.org and at the library.

GREAT SHELFORD PARISH COUNCIL POST OFFICE

The application for change of use from Post Office to residential was considered at the Parish Council Planning meeting on 30 June 2016.

Charles and Miranda Duthie-Smith had followed the advice of South Cambridgeshire District Council Planning Officers to market the business for 12 months and, if at the end of this time they had received no firm offers, an application for change of use could be made. It has been confirmed that, as a result of a government amendment to the Planning Act, change of use from shop to residential, subject to certain conditions (which apply in this case), planning permission is not required. Therefore the Parish Council Planning Committee did not feel it could oppose the change of use application.

The Parish Council met with the Post Office Network Services and Transformation Team on Monday 18 July to establish what alternatives and options are under consideration by the Post Office in providing a continuous service within the village, after the current Post Office closure sometime in early December 2016. The Parish Council is also engaging directly with other businesses in the village who might consider taking on the role. Obviously, any decision would be a commercial one between the Post Office and the local business concerned.

The Parish Council has received many communications expressing a strong support to keep a Post Office within the village and all communications received will be presented at the above Post Office meeting.

The Parish Council thanks all residents who responded and confirms they are doing whatever they can in attempting to secure a continued Post Office presence within the Village.

We will continue to update residents with any information, as it is available and commercially appropriate.

Mike Winter, Parish Clerk

Editorial Note: We asked Charles Duthie-Smith to comment on the above and he has said: 'The only comment we can provide, which is the truth of the matter, is that we do not know when we are leaving and so far there are no definite plans to have a post office in suitable alternative premises in the village.'

PLANNING APPLICATIONS PARISH COUNCIL COMMENTS

S/1421/16/FL	Mr and Mrs J Coy 3 Hinton Way	Part two- and part single-storey side extension
Recommend refusal. The minor amendments made do not overcome the reasons for refusal on the previous application S/0363/15/FL. The height and bulk is contrary to advice given in paragraphs 7.37–7.39 in the District Design Guide and will have an adverse impact on the street scene.		
S/1144/16/FL	R Baxter RFU Shelford Rugby Club	Additional landscaping details
No objections to the design of the shelter. The trees on the NE boundary are two whitebeams and a cedar. The cedar is quite a nice tree. No objections to the removal of the whitebeams. On the SE boundary there is a decent scots pine at the end of the row of leylandii and it would be good to retain it. No objection to removal of leylandii.		
S/1452/16/FL	RJ Bird 34 Leeway Ave	Alterations and extensions
No objections.		
S/1350/16/FL	Mr T Chapman Unit 3, Grain House, Mill Court	Change of use from B1 (office) to D1 (non-residential)
No objections to the proposed development.		

Alexander Technique

in Trumpington

Improve ease and balance
Alleviate pain and stress

Polly Waterfield MSTAT
Tel. 01223 529763
polly.waterfield@ntlworld.com

glorious gardens

t: 01799 551130
www.allseasonslandscape.co.uk
CREATE CONSTRUCT CULTIVATE

all
seasons
LANDSCAPE GARDENS



The Country Store

*Pet, Equine, Smallholder,
Shooting supplies,
Country clothing,
Wild bird food*

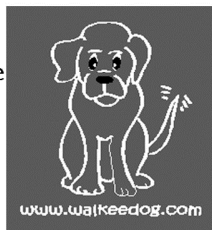
Unit 12a, Sawston Park,
Pampisford, Cambridge
CB22 3EE

www.thecountrystore.co.uk
Tel 01223 837977

Walkee Dog

Dog Walking

- * Fully Insured
- * Pick up & drop off
- * Dogs exercised in large secure farm paddock also available for private hire
- * Call Annie: 07500 660 657
- * For more information visit www.walkeedog.com



Nigel Powder Electrical



Nigel Powder

COMMERCIAL & DOMESTIC
ELECTRICAL SERVICES

Tel: 01223 845060 Mobile: 07725 044068

Email: nigelpowter@btconnect.com
www.powter-electrical.co.uk

16 Leeway Avenue, Great Shelford, Cambridge, CB22 5AU

DWD Home Improvements

*Your local carpenter and
small builder*

Carpentry, Kitchens, Roof repairs,
Fencing, Painting interior/exterior
Insurance work undertaken
No job too small
Quality service - free quotation
23 years' experience
Local references available

Telephone 01223 872558
Mobile 07855 579802
103a New Road, Haslingfield

COUNTY COUNCIL

The County Council considered the offer the Government had put forward for devolution for Cambridgeshire and Peterborough and has accepted it. This will mark a new relationship between national and local government. The area will have the same boundaries with the Clinical Commissioning Group, Police and Fire services, which gives many opportunities for collaboration. The main themes are ensuring the continuation of economic success and addressing the deficits in transport, skills and housing.

- There is a new £20 million fund each year for 30 years for infrastructure to support economic growth and jobs. (£600 million.)
- An additional £70 million for affordable housing in Cambridge, specifically for new Council homes.
- £100 million for Non-housing Revenue Account for affordable rent and shared ownership across Cambridgeshire and Peterborough.
- Transport infrastructure improvements such as A14/142 Junction and upgrades to the A10 and A47 as well as the Ely north Junction. It would also support development at Wyton, St Neots, and Wisbech Garden City and the Wisbech to Cambridge rail connection.
- Rail improvements from Cambridge to Kings Lynn and London and new rolling stock.
- Developing a new Peterborough University with degree-awarding powers.
- A local integrated job service working alongside the Department of Work and Pensions.
- Co-design with the Government a National Work and Health Programme focussed on those with disability or health problems, including those in work.
- Further integration of local health and social care resources to produce better outcomes.
- A devolved skills and apprenticeship budget for our young people.
- A Peterborough Enterprise Zone
- The Peterborough and Cambridge Combined Authority will be chaired by a directly elected Mayor to oversee and deliver the Deal.

The Local Authorities must:

1. Undertake a governance review, which has been done.
2. Prepare a proposal for devolution and governance review, also done.
3. Undertake a consultation exercise during July and August 2016.
4. Submit the results to the Secretary of State in September.
5. Consent to the draft order produced by the Secretary of State before Parliament, probably at the end of October.

The Combined Authority will be established in March 2017 and election of the Mayor will be May 2017.

County Councillors Gail Kenney and Tony Orgee

SAWSTON ADULT EDUCATION

We are excited to offer you a completely new range of courses for the next academic year! Indian Dance, Jive, Afternoon Singers, Turkish for Fun and Travel is just a small sample of what we will be offering.

All our new and usual courses are on our website www.sawstonadulthood.org. We have some taster sessions on Saturday 10 September from 10 – 11am for which we charge £5 (this is refundable upon enrolment for the same course commencing in September). Booking is essential to guarantee your place. The subjects currently available to try are French beginners, Guitar, Indian Cookery, Introduction to Writing Fiction, Art History, Italian beginners, Portraiture, Spanish beginners and Tai Chi.

A booking form is available on our website, or please feel free to pop into the main reception at Sawston Village College. We also have an enrolment morning on Saturday 10 September from 9am to midday.

The Adult Learning team will be available Monday to Friday 9am–1pm from Wednesday 24 August. Telephone us on 01223 712424 or send an email to community@sawstonvc.org.

Sue King & Amanda Hoskins, Adult Education Department

PICK UP YOUR COPY OF THE VILLAGE NEWS AT



Shelford Deli	Barkers Butchers
Kash Stores	Spar, Stapleford
Days of Ashwell	Lay Electrical
Cambridge Building Society	
Arthur Rank Hospice Charity Shop	

Or why not subscribe? If you live in the Shelfords or Stapleford, subscriptions only cost £4 per year, which means you get two issues free and it will be delivered to your door.

Call 01223 842993 to place your subscription now.



P O R T R A I T S

Paintings & Drawings

www.perveenart.com
camopenstudios.co.uk

Perveen Tayabali

01223 846330

perveentayabali@gmail.com

STEVE the PLUMBER

Steve the Plumber is a local plumber with a friendly, helpful and reliable service. Small or larger jobs undertaken. Competitive rates.

Please call 07803922517

www.stevetheplumbersawston.co.uk
steve_the_plumber@me.com



Day Dec Painting & Decorating



Free estimates

7 Stulpsfield Road
 Granchester, Cambridge
 Cambs CB3 9NL
Tel: 077 8087 5044

AMS Building and Landscaping Ltd

Newmarket, Cambridge and Ely

Our areas of expertise include:

- All Driveways: Block Paving, Gravel and Concrete
- High-Power Driveway Cleaning and Sealing
- Patios and Paths
- Fencing, Trellis Work and Decking
- Turfing and Seeding
- Garden Design
- All Building Work and Property Maintenance
- Garden and Property Clearance (Licenced)
- Mini-Grab and Digger Hire



Call for FREE estimates and bookings:

Office: 01638 721893 or Site: 07789261266

Please visit our website for examples of our work & refs:

www.amsbuildingandlandscaping.co.uk



ANGLIA TREE CARE



A O'Connor

Tel: 01223 424454

23 King Street
 Cambridge CB1 1LH

*Tree surgery
 Stump-grinding
 Hedge maintenance
 Fully qualified & insured*

*All work carried out to British
 Standard BS3998)
 Member of the guild of
 master craftsmen*



www.angliatreecare.co.uk Email: info@angliatreecare.co.uk

HEIDI ALLEN

I would like to begin by paying tribute to my parliamentary colleague Jo Cox. Her death was an absolute tragedy and my thoughts go out to her family. Jo was quite simply an inspiration and we owe it to her to carry on fighting for those most in need.



Heidi Allen and Theo Lury unveiling the plaque in Little Shelford

Since I last wrote I've been out and about as usual. I've unveiled the new village sign and plaque in Little Shelford (the smallest village green in the UK!) and tied a joint ribbon across the river Granta in Little Abington to celebrate the joining of the Sawston and Linton Medical Centres. Recent meetings with the BMA, GPs, and staff at Addenbrooke's remind me of the challenges the NHS faces, so I am grateful that this new partnership will be able to offer new services and extended opening hours for their patients.

Progress continues apace at Northstowe but in addition to delivering housing, I also see it as

an ideal opportunity to deliver apprenticeships. As with most things in life, it's about getting the right people around the table, so I had a really positive meeting with a range of key individuals including councillors, officers, developers, local schools and colleges. I had been disappointed to hear of the number of students leaving our colleges with no apprenticeship to go to and yet hearing from builders they are short of skilled trades. This is simply not good enough and we will make sure we don't waste this opportunity! I'll keep you updated on our progress with this.

Please see my website for details of surgeries www.heidisouthcambs.co.uk/residents-drop-surgeries and please get in touch if I can help you with anything. You can contact me by phone on 01954 212707 or via email at heidi.allen.mp@parliament.uk.

Heidi Allen

NICHOLAS CLIFFE & CO CHARTERED ACCOUNTANTS

*Business Advisers
for
South Cambridgeshire*

**Accounts, Audit
VAT & Tax Advice.
WE WANT TO
HELP YOUR
BUSINESS GROW**

Free initial meeting
and business
"health check".
Realistic fees.

Mill House, Mill Court,
Great Shelford
Tel: 01223 471576

www.nicholas-cliffe.co.uk

FROM OUR QUALITY
TRADITIONAL TOYS
TO MODERN OUTDOOR
PLAY EQUIPMENT,
YOU'LL ALWAYS FIND
SOMETHING UNIQUE
AT ROCKING HORSE.

ROCKING HORSE THE COUNTRY TOY SHOP

CELEBRATING 25 YEARS

BURWASH MANOR NEW ROAD BARTON CAMBS CB23 7EY

01223 264674 WWW.ROCKINGHORSETOYSHOP.COM

MON TO SAT : 9.30-5 SUN : 11-5



SIMON SPARROW CARPENTER AND JOINER



22 Woollards Lane, Great Shelford
Cambridge CB2 5LZ

Telephone (01223) 842380

HEATWAVE SERVICES

**Servicing, installation, and repair of all
domestic heating systems**

CORGI and OFTEC registered

Tel: 01223 837774

Mobile: 07795 304013

**Have you visited our
Jewellery Centre
near Baldock?**



HARRIET KELSALL
BESPOKE JEWELLERY

JEWELLERY SHOP WITH GIFTS
FROM £5

ENGAGEMENT, WEDDING &
ETERNITY RINGS

RELAX AND WATCH THE
GOLDSMITHS

COFFEE SHOP SERVING
HOMEMADE FOOD

KIDS' JEWELLERY PARTIES &
EVENTS

Open: Mon-Fri: 10-6, Sat: 9.45-4

Fairclough Hall Farm, Halls Green,
Herts SG4 7DP

www.hkjewellery.co.uk

01462 790565

JASON KIRBY

*Professional Painting
& Decorating Ltd*

Tel/Fax:

01954 211775

Mobile: 07966 174431

jasonkirbyltd@gmail.com



A Professional Service from Start to Finish



PLAYSCAPE NEEDS YOU!

It was great to see so many of you at the Shelford Feast – your support is crucial in realising a new playscape for our village. Thank you so much for all your help so far! In case you missed us, here are some things you can do to help:

- ❖ Sign up for Playscape's **Sponsored Abseil down St Mary's Church Tower!** This is a fantastic opportunity to test your nerve and courage whilst raising funds for this great local cause. Put Saturday 1 October 2016 in your diary and go to www.shelfordplayscape.org/events to register. Registration fees are £25 for adults, £15 for 10–17 year-olds, and your goal is to raise a minimum of £100 each – our top fundraiser for It's a Knockout managed a fantastic £1500! Just think what 40 of you could do for our village if you managed a third of that total.
- ❖ Sign up for **Give As You Live** and nominate Great Shelford Playscape. Simply by shopping online you get companies to donate a percentage to us.
- ❖ **Sell your unwanted items for charity.** Enough stuff? Then how about a clear out and an auction on eBay? Select 'Donate a proportion to charity' when listing your item and we will receive whatever percentage of the sale price you choose. So far we've raised over £100 in this way!
- ❖ Join our **Fun Run** committee and help bring back a much-loved Village Event in 2017 whilst simultaneously raising funds for the Rec.
- ❖ We need your help to hone our fundraising strategy, either through a one-off meeting or in a more dedicated way.

We have an enthusiastic committee of volunteers, but this is a big project and we need all the support you can offer us. Help and suggestions are always gratefully received; if you have the time and can join us on a more permanent basis (especially when it comes to fundraising) or you would like to help run a one-off event, then please do get in touch. We'd love to hear from you! Contact us at info@shelfordplayscape.org.

Eleanor McCrone

Cambridge District Art Circle

SUMMER EXHIBITION

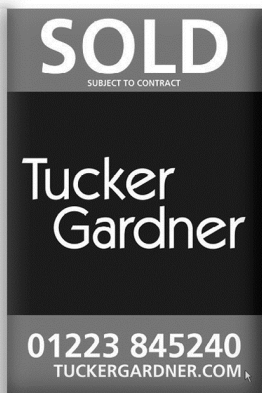
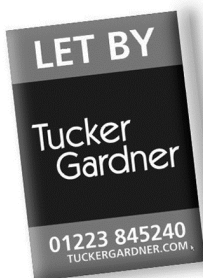
Grantchester Village Hall

Saturday 27 to Monday 29 August, 10am to 5.30pm

The Exhibition will have both framed and unframed work for sale
from local professional and amateur artists

Refreshments and delicious home-made cakes (including gluten-free)

**"Everywhere I look
I keep seeing..."**



**For professional advice, covering all your
property needs, give the local experts a call.**

Cambridge ■ Ely ■ Great Shelford ■ Histon ■ Sawston

FCM CARPENTRY

Mobile No: 07525140796

Email: fergus.matheson@hotmail.co.uk

Website: www.fcm-carpentry.co.uk

**FREE ESTIMATES &
REFERENCES
AVAILABLE**

*All aspects of carpentry
and building*

Bespoke Curtains & Blinds ...



Sue Crow Tel: 01223 836498
Email: sue@suecrowcurtains.com
www.suecrowcurtains.com



Technical Moves
Recruitment Specialists

Architecture
Building Services
Civil Engineering
Property & Surveying

01223 845333

technicalmoves.com

34A Woollards Lane, Gt. Shelford

D Hatter The Gas Specialist



Carbon Monoxide Kills
75% of last years poisonings
were due to lack of servicing!
.....

D Hatter, specialist in servicing,
repairs and installation of
DOMESTIC gas appliances,
including boilers, fires
and cookers.
.....

Improve efficiency, save fuel,
give your central heating
system a new lease of life,
have it **POWER FLUSHED**

t: 01223 844866
m: 07747 444 435
e: davidhatter1@aol.com
w: thegasspecialistltd.co.uk





GREAT SHELFORD PARISH CHURCH

www.stmarysgreatshelford.org/

A very warm welcome to your historic parish church – please call in and enjoy the sacred space.

Listed Places of Worship Roof Repair Fund: We are delighted to report that our application for a grant towards the re-leading of the nave and north aisle roofs has been successful. Work will start in the autumn. More details next month.

General Synod feedback: I attended the General Synod of the Church of England in York last month. We were asked to make the following statement available to all those who were supporting Synod members in prayer and who were also concerned to learn what had been happening:

In July members of General Synod have met in an informal setting in which they have listened and been heard as they have reflected together on scripture and a changing culture in relation to their understanding of human sexuality.

Throughout these conversations, deep convictions have been shared and profound differences better understood. The Shared Conversations over the last two years now come to a conclusion with over 1300 members of the church directly involved. It is our hope that what has been learned through the relationships developed will inform the way the church conducts whatever further formal discussions may be necessary in the future. It is our prayer that the manner in which we express our different views and deep disagreements will bear witness to Jesus who calls us to love as he has loved us.

In comments to members of Synod at the end of the Shared Conversations the Archbishop of Canterbury, Justin Welby, said:

‘At the heart of it is to come back to the fact that together we seek to serve the God who raised Jesus Christ from the dead and in whom there is never despair, there is never defeat; there is always hope, there is always overcoming; there is always eventual triumph, holiness, goodness and grace.

That is for me what I always come back to when it all seems overwhelming.

Thank you so much for your participation. Let us go in confidence. Confident in the God who raised Jesus Christ from the dead.’

I personally felt very supported by you all – thank you for your interest, prayer and expressions of support.

Joint Vicarage Tea Party: St Andrew's Stapleford are holding a Joint Tea Party in the Vicarage garden (weather permitting; if not indoors!) on Sunday 14 August, from 3–5pm. Please bring and share food; tea will be provided. This will be a shared event with St Mary's. Do come along and bring friends and neighbours, to enjoy the garden, meet old friends and make new ones.

St Mary's Toddler Group: Thursday mornings in term time in the Community Room between 9.30 and 11.30am for children aged from 0–3 years with their parents and/or carers. Contact details Gillian Pett at gillian.pett29@gmail.com.

First Steps : For babies and toddlers, 0–5 years, meeting on Mondays from 2–2.30pm, term time only. It is located in the Church Community Room, which is contained and warm. We have liturgical toys and books suitable and safe for the age group. Tea, coffee, juice, biscuits/cakes will be available after the service. The structure of the session is, same songs each week and a bible story, ending with prayer. All families are welcome.

From the registers:

Baptisms:	10 July	Florence & Theodore Dootson Chloe Bridgeland
	24 July	Lois Draper
Marriage:	2 July	Christopher & Katharin Jordan

Regular Services:

Daily:	9am Morning Prayer 5pm Evening Prayer
Wednesday:	9.30am Holy Communion (BCP 1662)
Sunday:	8am Holy Communion (BCP 1662) 10am Parish Communion, our main Sunday service. 6.30pm Evensong (BCP 1662)

For further information about Great Shelford Parish Church

visit our website: www.stmarysgreatshelford.org/

Priest in charge: The Revd Simon Talbott – 01223 847068 or 0705 0042616 or
vicar@stmarysgreatshelford.org

Assistant Curate: The Revd Monica Cameron – 07985 304860 or
curate@stmarysgreatshelford.org

Parish Administrator: Katharin Page – 07710 518220 or
katharinpage@yahoo.com.

St Mary's Great Shelford is a Registered Charity – No: 245456

Beach holidays, City breaks, Honeymoons, Weddings abroad, Adventure holidays, Ski, Cruise, Tailormade trips, Flight only, Car hire, Airport hotels and parking and much more...

CHERYL HARRADINE

Travel Counsellor

01223 842670

cheryl.harradine@travelcounsellors.com

www.travelcounsellors.co.uk/cheryl.harradine



Travel Counsellors ensures complete financial protection on every booking

travel counsellors



Rainbow Pre-school

A unique place to play and learn in Shelford



A caring community pre-school in Shelford for 2-4 year olds
Open Mon-Fri from 9am to 3pm (term time)

For more information visit
www.rainbowshelford.co.uk
or contact
enquiries@rainbowshelford.co.uk

Tel: 07895 216603
Manager: Allison Tomlin

Lynn Driscoll

DipCFHP MPSPract

Foot Health Practitioner

Member of the Accredited Register of Foot Health Practitioners

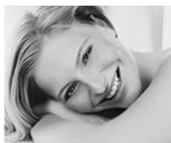
- Long nails trimmed
- Thick nails reduced
- Corns & Verruca treated
- Hard skin/callus reduced
- Fungal Infections
- Dry and cracked heels
- Diabetics cared for

Mobile service providing foot care in the comfort of your home

Tel: 07771 735300

WATERLILIES

Beauty. IPL. Relaxation



Elemis

IPL laser for hair removal
Elemis Biotec Facials

Call 01223 844700
www.waterlilies.org.uk

2d Dolphin Way, Stapleford, CB22 5DW



CAMBRIDGE
ELECTRICAL
services ltd



Domestic, Commercial, Industrial & Agricultural

For all your electrical installation, inspection & testing and repairs, contact us for a free no obligation quotation.

Call: 01223 430 430

Email: Enquiries@cambridge-electrical.co.uk

Website: www.cambridge-electrical.co.uk

Celebrating over 25 years in business.

Willow Tree

All aspects of painting, decorating & home improvements

- Exterior & interior painting & decorating
- All gardening needs
- All styles of fencing, etc

Contact Dean on
01763 232757
07906 531518

BELLE CASA
DOMESTIC CLEANING (UK) LTD Est. 2002

For cleaning, washing, ironing, etc

A professional service with
dependable, honest cleaners

Inclusive rate of £11.50 per
hour (£11.00 for 5 or more)

01223 441055
www.CleanersCambridge.com



UPGRADE LEARNING M: 07519 153 981
M: 07810 441 408
info@upgrade-learning.co.uk

**English and Maths
Tuition for GCSE
Students**

Sawston Village College
After school: 3.15pm or
4.45pm
80 min sessions
Mondays and Tuesdays
Call 07810 441 408 for
availability and rates
COMPANY REGISTRATION
NUMBER: 10104164

NICEIC
APPROVED
CONTRACTOR

**NEAVES
ELECTRICAL**

A family business with over
50 years commercial and
domestic experience

NICEIC and Part P qualified
and insured

Tel: 01223 290956
Mobile: 07702 280687
www.neaveselectrical.co.uk

DUXFORD BUILDING & LANDSCAPE SERVICES

All work considered from:

- Hard Landscaping
- Brickwork
- Structural Alterations
- Carpentry
- All types of Building Works from Extensions
to Conversions

D A Rayment

Home: 01223 837645
Mobile: 07958 774360
Email: duxfordbuilding@btinternet.com
Web: www.duxfordbuildingandlandscapes.com



sawstoncarpetandflooringltd

CONTRACT FLOORING	SAFETY FLOORING
KARNDEN	AMTICO
CARPETS	LAMINATE
VINYL/LINO	COIR/SISAL
VERTICAL BLINDS	VENETIAN BLINDS
ROLLER BLINDS	PARQUET FLOORING

Mon-Fri 9am to 5pm
Sat 9am to 4pm

Unit 3A, Sawston Park, London Road
Pampisford, Cambridge, CB22 3EE
t 01223 837005

www.sawstoncarpetsandflooring.com
email sawstoncarpetsandflooring@gmail.com

NB HORTICULTURE LTD

All types of garden work
& landscaping
www.nbhort.co.uk

Hedge & Shrub supplier
www.cambridgehedges.co.uk
Mr N Barber BSc RHS Cert

109 Cambridge Road
Great Shelford, CB22 5JJ

07789 564042
01223 977306



Great Shelford
Free Church

shelfordfreechurch.org.uk

As I write, I have just returned from an amazing Shelford Feast Day, an afternoon of glorious sunshine and a real sense of community. During the week it was good to join in events as varied as the school PTA disco in the marquee and a music concert in the Free Church; all were occasions where opportunities for informal conversations abounded and connections between the various community groups were strengthened. I was also privileged to be part of the Community Service which opened the week – a joint time of worship between the Free Church and St Mary's. I was amused by the ambiguity of the term 'Community Service', with its connotations of 'unpaid work, intended to be of social use, that an offender is required to do instead of going to prison'. However, on reflection, it is actually quite an appropriate term. Jesus came not to be served, but to serve, and service is one of the key tenets of our life at Great Shelford Free Church.

We do, of course, welcome all who come to our church building, but the building is not 'the church'. It is made up not of bricks, but of people who believe in walking beside others through the good times and the bad times, whether or not they share our faith. Our members are not immune to life's 'slings and arrows' and we have our fair share of physical and mental health issues, concerns about jobs, fractured families, the challenges of caring for elderly loved ones etc, as well as the joys of children, friends and satisfying tasks and accomplishments.



So how can we serve you? We are always happy to lend a listening ear to those who feel burdened by cares and concerns. We would love to pray for you, but will never force that on you unless you request it. You are welcome at any of the events detailed alongside this article, where you will find people willing to just listen without judging, or help in practical ways if needed. Further details are on our website. We can also be contacted by text or email specifically for prayer, in confidence, and anonymously if you wish, on 07789512067 or gsfcprayer@yahoo.co.uk.

We'd love to serve you!

Liz Jenkin, Elder

Worship Services at Great Shelford Free Church

Sunday 7 August @ 10.30am

‘Oddballs of the OT’ – Naaman (2 Kings 5:1–14)

Speaker: Richard Renouf

Sunday 14 August @ 10.30am

Communion Service

‘Oddballs of the OT’ – Gehazi (2 Kings 5:15–27)

Speaker: Rev’d Martin Cockerill

Sunday 21 August @ 10.30am

‘Oddballs of the OT’ – ‘Uzziah’ (2 Chronicles 26:1–23)

Speaker: Rev’d Martin Cockerill

Sunday 28 August @ 10.30am

All-Age Service

‘Guardians of Ancora’

Speakers: Rev’d Martin Cockerill & Diana Parr



August Children’s Holiday Club

For children from 5 years old to 11 years

At Great Shelford Free Church

Tuesday 23 to Friday 26 August

9.45am – 12.15pm

Final All-Age service on Sunday 28 August at 10.30am

followed by lunch in the church hall

For further event details and/or to request a registration form,

email: childfam@shelfordfreechurch.org.uk;

or telephone: 01223 842181(church office);

or consult the church website: shelfordfreechurch.org.uk

For further information about Great Shelford Free Church (Baptist)

visit our website: www.shelfordfreechurch.org.uk

Church Office (Access via Ashen Green): 01223 842181

Email: administrator@shelfordfreechurch.org.uk

Office Hours: Tuesday 9–4.00pm; Wednesday 9–1.00pm; Thursday 9–1.00pm

Great Shelford Free Church (Baptist) is a Registered Charity No: 1141345

SHELFORD SCHOOL

The final month of term at Shelford School is a whirl of activity as the eagerly anticipated deadline of 21 July draws closer. Even though the weather didn't always seem very summery, there has been a great variety of enriching activities, in addition to the regular classroom priorities of spelling and cursive handwriting.

Highlights have been the Sports Day, put together by Miss Beck, and the inter-school athletics competition at which Shelford School earned a silver medal, also the choir and orchestra event, with some good charity fundraising as well; and the Key Stage 2 production of the Pied Piper of Hamelin – with seats in great demand.

There has been a good international feel to things, with an International Week seeing the launch of the hall as an airport terminal and people criss-crossing the globe from India to Brazil. Then there was the annual twinning visit of children from Verneuil-en-Halatte to complete that theme. With the backdrop of our Europe Referendum never far from our minds in the last month, this embracing of the global village in our school has been very encouraging.

Otherwise the dominant note of this time of year is on managing transitions. So everyone who will still be in the school for the start of term on 5 September has had taster visits to their next class – for year 5 that additionally meant a morning at Sawston Village College.

For the outgoing year 6 a whole day at Sawston is followed by the very special Leavers service – looking back on, for many of them, seven years together from Reception upwards – and looking ahead to all that the future holds. I am sure that everyone also enjoys the lunch afterwards where the leavers have chosen their favourite menu for the whole school and then get to sit at top table with Mrs Evans. But as a vicar, I am so thankful that this Leavers service happens in church, with the implicit acknowledgment that for many of the staff and children of the school transitions are best faced with the confidence that we can have through knowing Jesus Christ is with us and that he is the same yesterday and today and forever.

Rev'd Simon Scott, Rector of Little Shelford and ex officio Governor



SEPTEMBER ISSUE OF THE *VILLAGE NEWS*

The deadline for copy for the next issue of the *Great Shelford Village News* is Friday 12 August and should be available in the shops on Friday 26 August. Subscribed copies will be delivered shortly thereafter.

picturegenie

Design | Training

Software Training

- Adobe Photoshop
- Adobe InDesign
- Adobe Illustrator
- Wordpress
- Digital Photography

Graphic Design

- Logos / Biz Cards
- Newsletters / Posters
- Social Media Artwork

☎ 07944 267113
info@picturegenie.co.uk

**Mrs Rosemary Rigge**

Grad Dip Phys MCSP Reg.HPC

Chartered Physiotherapist

Tel: 01223 844091

Mobile: 07958 708728

TREATMENT ROOMS:

26 Mingle Lane, Stapleford

or HOME VISITS Reg BUPA/PPP, etc

SOLUTIONS

Gents' Hair Salon - Ladies' Hair Salon above
(air-conditioned)

44 Woollards Lane, Great Shelford CB22 5LZ

Closed all day Wednesday & Sunday

☎ 01223 843844

GIUSEPPE PIRAN

SPECIALIST PAINTERS & DECORATORS
FOR PERIOD, RESIDENTIAL & COMMERCIAL PROPERTIES



0845 050 9277 www.gpiran.co.uk

Karen's Gardening Services

No job too small

Karen Mead

Office -

07939 581479

Mobile -

07952 348677

E-mail -

karen.cares@yahoo.co.uk

TIM PHILLIPS & Co Ltd**Accountants***Independent, specialist service for:***> SMALL BUSINESS – SELF ASSESSMENT – PERSONAL TAXATION <**

Cart House 2, Copley Hill Business Park

Off A1307 between Wandlebury and Babraham

Tel: **01223 830044**; Email: **Info@TPaccounts.co.uk**

www.TPaccounts.co.uk

Easy, free parking right outside the door

DIARY – AUGUST 2016

Date	Event	Time	Place
15	Arthur Rank Hospice Charity Shop Opening (page 27)	9am	Woollards Lane
17	Engage Talk (page 25)	2pm	Library
27	Farmers' Market	9am	Memorial Hall

The Country Market is held in the Memorial Hall on Wednesday 8.30–11.30am

Black Bin Collection: 8 and 22 August

Green Bin Blue Bin Collection: 1, 15 and Tuesday 30 August

Old batteries: Recycle by placing in a plastic bag tied to the blue bin

WOMEN'S INSTITUTE

In June, we had a moving talk from Jill Pearce about the Mercy Ships organisation. Mercy Ships converts large ships into floating hospitals that sail to ports where local people who have no other access to medical care can be treated by medical staff. Although it is a Christian organisation, it serves the poor regardless of race, gender or religion.

Doctors, nurses and other medical professionals from all over the world staff the ships, giving their time freely.

The July meeting was our annual Garden Party and, later in July, we served the teas at the Shelford Feast where we hope to have attracted some more new Members. In September our speaker will be Style Consultant Luanne Hill.

New members and visitors are very welcome at every meeting. We meet on the first Thursday of every month (except August) at 7.30pm in All Saints' North Room, behind the church, in Little Shelford. The date of the next meeting is Thursday 1 September. Visit our website www.theshelfordswi.wordpress.com



Mary Talbott

PHOTOGRAPHS FOR THE *VILLAGE NEWS*

TO ACCOMPANY AN ARTICLE

We are always delighted to receive photographs for the *Village News* to accompany text. An image helps to brighten and lighten the page, as well as draw attention and add interest.

They will usually be printed in black and white, so the higher quality the image you send us the better. We will edit to fit the article and can make some improvements to contrast and brightness, but a grainy image will not reproduce well.

When sending your photographs to us, please make sure you tell us:

- who is in the photograph
- what it is about
- where it was taken
- when it was taken
- and lastly, the photographer, so we can give credit where due.

FOR THE FRONT COVER

Photographs for the front cover will always be printed in full colour. We like to have an image that is Great Shelford themed: village life, people, events or a beautiful seasonal photograph. There is no need to write an article to go with it, but we do need the 'who, what, where' etc, detailed above.

PHOTOGRAPHS OF CHILDREN

If children are pictured, then permission to publish **MUST** be given by the parent or guardian. Please seek this before sending to us and confirm that it has been obtained.

EDITORIAL NOTE

Although we welcome all your contributions, inclusion of photographs, and other content, is subject to space available and the final decision to publish will be made by the Editorial Committee.

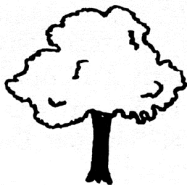
Please send your photographs to our usual email, gsvneditorial@yahoo.co.uk. If you have an old photo that you cannot convert to a digital image, then let us know and we will arrange to do that for you.

We look forward to receiving your photographs!



Editorial Team

Care For Trees



**Qualified
Reliable
Insured
Affordable**

*For a free quote call
Mike Wallman on
01440 820323*



BARKER BROS

FAMILY BUTCHERS

Purveyors of *quality meats* including our
award-winning home cured bacon, home cured ham
and *local farm assured* pork, beef & lamb.

We also stock a wide range of deli produce, traditional
English & Continental cheeses, fresh fish & game.

Have you tried our new **HOMEMADE SHELFORD PIES?**
Available in a variety of sizes & fillings, we think they're yummy!

43 High Street, Great Shelford, Cambridge CB22 5EH Tel: 01223 843292
www.barkerbrosbutchers.co.uk

J M R Electrical



**Electrical
Contractor**



**All Domestic, Industrial &
Commercial work undertaken**

21 Ashen Green, Great Shelford, Cambridge
Email: jmr.electrical@hotmail.com
Tel: (01223) 844680 Mobile: 07766 68 38 86

QUALITY BESPOKE PICTURE FRAMERS

**SIMON ROBINSON
& SON**

Professional, Friendly Service
Over 25 years experience

Wide Selection of Frames
Conservation Materials Used
UV Protective Invisible Glass

Artwork/Photography
Needlework/Tapestry
Oil Paintings and
Canvases Stretched
Unusual Objects Framed
Made to Measure Mirrors
Limited Edition Prints Available

Tel. 01223 873123

Opening Hours:
Tues-Fri. - 9am-5.30pm
(Saturday - By Appointment)

www.robinsonframes.co.uk
lester@robinsonframes.co.uk

**STUDIO 6, PENN FARM,
HARSTON RD,
HASLINGFIELD, CAMBRIDGE.
CB23 1JZ
(AMPLE PARKING)**

L Travers Plumbing



Lee Travers
Plumbing and Heating Engineer
For all your plumbing and heating

l.travers971@btinternet.net

49 Granta Road Sawston, CB22 3HT

01223 836268 / 07973 298914



at Great Shelford Library

Wednesday 17 August 2–3.30pm

A talk by author Jane Wilson-Howarth
on her new novel, *Himalayan Kidnap*

Tickets available from the library or phone 0345 045 5225.

Free, but donations towards refreshments welcomed

SUMMER STORY TIME AT GREAT SHELFORD LIBRARY

for 5–8 year olds

Tuesday mornings in August 11 to 11.30am

A parent/carer will need to stay with their child. There is no charge and no booking is required. Look out for posters around the village.

Organised by the Friends of the Library



HOW TO CONTACT GREAT SHELFORD VILLAGE NEWS

We are pleased to receive articles, letters and notices for community events for consideration. Please send by email (preferably as a Word document), or deliver paper items to Judith Wilson (see below). The copy date is usually the second Friday of the month. See page 8 for next month's date.

Contact Information

General enquiries and articles for publication: gsveditorial@yahoo.co.uk

Non-email contributions to Judith Wilson, 11 Elms Avenue, Great Shelford

Commercial advertising enquiries: gsvnadverts@yahoo.co.uk

Subscriptions: 01223 842993

General enquiries 01223 571895 or 01223 842553

Editorial Committee

Bridget Hodge, Judith Wilson, Lorraine Coulson, Duncan Grey

The Gardener's Garden Centre
Cambridge Road, Great Shelford
Tel: 01223 842777
enquiries@scotsdales.com
www.scotsdales.com

Opening times:
Monday - Saturday 9am - 6pm
Sunday 10.30am - 4.30pm
Late night Thursday until 8pm

Scotsdales®
YOUR GARDEN CENTRE



FIRST CALL PEST CONTROL

Rob Cowling
NPTA registered

**Wasps, mice, rats,
moles, insects,
etc.**

Discreet service

Mob: 07951 047688
01223 630526

Layer Travel

Tailored Travel Solutions

Janice@layertravel.co.uk
01223 841376

Tailor-made holidays
Brochured holidays
Accommodation

City Breaks

Cruises

Touring



Skiing



Flights

DAVID FOX CARPENTRY

***Purpose-made
joinery and fitted
furniture***

Unit 4 Granta Terrace
Stapleford
Cambridge

01223 845143

GOG MAGOG MOWER SERVICES

Repair, Service and Sales of all Garden
Machinery including Strimmers and Chainsaws
Free Collection and Delivery Service available

01223 832 894 / 0776 955 8279

www.gogmagogmowers.co.uk

SHELFORD DELICATESSEN

ONE OF THE INDEPENDENT'S 50 BEST
DELICATESSENS IN UK

THE INDEPENDENT'S FOOD & DRINK - FEB 2011

HOMEMADE ICE CREAM, ARTISAN
BREAD, DELI KITCHEN, FRESH DISHES,
CHEESE, ANTIPASTI, SPECIALITY
MEATS, SEASONAL VEGETABLES,
EVENT CATERING

WWW.SHELFORDDELI.CO.UK

8A WOOLLARDS LANE, GREAT SHELFORD, CB22 5LZ
01223 846129

CHARITY SHOP OPENING IN WOOLLARDS LANE



Arthur Rank Hospice Charity

Arthur Rank Hospice Charity is pleased to be opening its fourth shop in Great Shelford on **Monday 15 August**. We will be taking over the premises of the old bike shop, between Matthew Lewis Hairdressing and Tesco, in Woollards Lane.

Our opening hours will be 9–5pm, Monday to Saturday.

VOLUNTEERS

We are looking for volunteers to help in the shop, so if you are interested, please contact Vipra Jain, Recruitment and Training Co-ordinator. Her number is 01223 723117, or contact her by email Vipra.Jain@ARHC.org.uk

Volunteering can be from as little as half a day per week to as much as you can spare. If you are not able to commit to every week, even the occasional shift would help, so do get in touch. If you are not keen to be customer facing, there is always plenty of help needed behind the scenes too. We provide our volunteers with a training programme.



Phil Orvis and Vipra Jain outside the new Arthur Rank Hospice Charity shop in Woollards Lane

DONATIONS

To stock the shop, we welcome your donations of good quality, saleable clothes, books, DVDs, jewellery and bric-a-brac. Bring your donations along to the shop during our opening hours.

Phil Orvis, Interim Senior Shops Manager

SHELFORD FEAST 2016



You know it's Feast Week when for at least one evening the clouds gather and the rain pours in – then the weekend dawns warm and clear and The Feast takes place in a cloudless sky.

The 2016 Feast let the village relax and enjoy after the recent madness of Brexit, political resignations, French terrorism and Turkish coups. All that could be forgotten as we enjoyed the community service, young person's disco, Sawston Youth Drama, Comedy Night, Quiz (fifty teams!), Ska Night and a record-breaking Saturday beer festival, craft fair and Eighties night (900 people!).

The Feast itself was a real success, a family-friendly affair with more stalls than ever, great bands giving

music throughout and all beers and food sold out. A highlight was the Scouts launching packets of Haribos on small parachutes using compressed air (ask Charles Crawley how it works!).

The Bunch have been overwhelmed by thanks and may we here thank you – if you attended, but particularly to those who helped out in setting up, running and taking down our extensive event. All of you who manned stalls, supervised traffic, prepared the vegetables, served the food and the drink, washed up ... whatever was done could not be done without volunteers.



The Bunch members are already listed in the programme and you will have seen us in our red shirts. Many regular helpers wear the blue volunteer shirts – just to remind everyone that we give our time and energy so the village can have a great community event. And we know very well that there are scores of other people who helped in ways great and small. To all of you, **THANK YOU!** Please come again next year! It won't work without you!



One of the toughest jobs is building the bar, fencing the site and moving quantities of equipment into place. In the past we've had injuries from exhaustion and so we were particularly pleased that Samskara Construction

stepped in to do the heavy lifting both at the beginning and at the end of Feast Week. It made an enormous difference to us with their strength, good humour and positive attitude.

Look out for news of how much money was raised, but for now I hope you'll agree that it was a bumper Feast for all. So make a note that the next Feast will be **9 to 16 July 2017.**

See you at The Shelford Feast!

Duncan Grey



Photographs by Andrew Heather

Cambridge Neuropsychology



Dr Catherine Harter (Clinical Psychologist, Paediatric Neuropsychologist) offers assessments and intervention for children and young adults

Specialising in specific learning difficulties: reading, maths, attention, memory and problem solving; neurodevelopmental conditions, emotional and behavioural concerns

www.cambridgeneuropsychology.co.uk
admin@cambridgeneuropsychology.co.uk
 07546 972012



Self Storage in Sawston

Clean, Dry & Secure. 24/7 Access

www.MegaStorage.co.uk

01223 833 777

**The Most Thorough
Cleaning Ever Seen
or it's FREE**

ART OF CLEAN
 A CLEAR DIFFERENCE IN QUALITY

WE CLEAN:

- Carpets,
- Upholstery & Leather
- Fine Rugs
- Tiles & Stone

"Your company provides an excellent reliable and friendly service and is very business like in its dealings. Excellent, punctual advice and service."

Mrs Davis, Great Shelford



-10%
 Discount to all
 new customers

Laurence & Pierre de Wet

**For a Free "Audit
& Quotation"
call now:**

01223 863 632

www.artofclean.co.uk

THE GOG

FARM SHOP
 ESTD · CAMBRIDGE · 1919

BUTCHERY · DELICATESSEN · GROCERY · CAFÉ

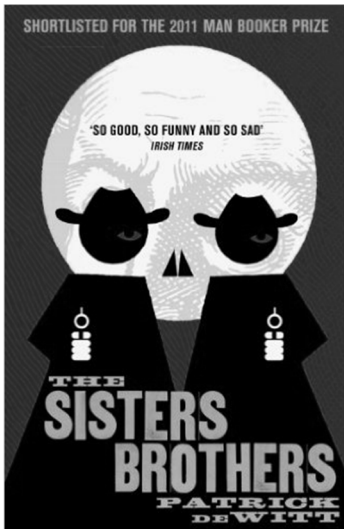
WWW.THEGOG.COM

BOOK REVIEW OF *THE SISTERS BROTHERS* BY PATRICK DEWITT

Patrick deWitt's superb debut, *Ablutions* (2009), introduced him as an excellent writer of style and story. His follow up novel, *The Sisters Brothers* (2011), affirmed these attributes were not from a one trick pony. It is a story set in America during the gold rush of 1851. Two brothers, Eli and Charlie, are gunslingers, hired killers working for the Commodore, one of the most powerful men in America. He's tasked the infamous brothers with finding a man and killing him because he's stolen the Commodore's money.

What's striking from the first page is the voice of the characters, especially our narrator Eli. When the western genre is thought of, it usually conjures up John Wayne's voice, yet Eli and Charlie speak almost like Dickensian characters. This is disorientating and then addictive. I basked in the rhythm of the language that each character spoke. Even the smallest of characters left a lasting impression.

It is difficult to compare this with other works of fiction as the protagonist's voice is so unique. But for the sheer enjoyment of hearing such a distinctive voice then maybe it's like J. D. Salinger's perfect novel, *The Catcher in the Rye* (1951), as no lead character's voice is as matchless as the legendary Holden Caulfield.



deWitt swims in the minutiae of his characters and their situations, much like the writer/director Quentin Tarantino does. The introduction of a toothbrush to Eli and his use and views on the tooth cleaning instrument are remarkable and enjoyable, giving the story a richness that is often overcooked by lesser skilled writers.

You can order this novel from the Great Shelford library. The audiobook, narrated by William Hope, can also be downloaded via the One Click Digital app that allows you to borrow for free and listen to it on your mobile device.

I enjoyed *The Sisters Brothers* for its gripping story and memorable characters. Patrick deWitt is a fine writer and gets better with every book.

Garry Pope



Cambridge
Veterinary Group

"Quality care for all your veterinary needs for small animals and exotic species."

89a Cherry Hinton Road
Cambridge, CB1 7BS.
01223 249331

www.cambridgevetgroup.co.uk
info@cambridgevetgroup.co.uk




Outstanding quality cleaning for all your cooking appliances at competitive rates

Safe, eco-friendly, asthma friendly, Non Caustic Cleaning Solution

No fumes, No mess, No bother – just amazing results every time

CALL NOW ON: 01440 761515
WWW.GLEANERSOVENCLEANING.CO.UK
12 WRATTING RD, HAVERHILL, SUFFOLK CB9 0DD

Your local professional and conscientious oven cleaner

A C Electrics
Your Local Electrician
Always on time!
Lighting & Power
Testing & Inspection
Call Outs
No Job Too Small
Call us now:
01223 894848
www.acelectrics.co.uk

Thomas J Shearing
Furniture Restoration and Traditional Upholstery
Comprehensive re-upholstery service
Curtain making and hanging service
Vast range of furnishing fabrics
Antique and modern furniture restored
Picture Framers and Restorers
French polishing and other finishes available
Bespoke mirrors made to order
The Hall, 4 Chapel Street, Duxford
Tel: 01223 837150 Email: shearing@mail.com



Panther spotted in your village!
It just got cheaper

Panther territory just got bigger and now includes your village! Cambridge's largest and best loved taxi company has launched a brand new, reduced rate village taxi service. Introducing fares that are fair in your village. All journeys on the meter* means no fixed prices. You just pay for your journey door to door – and not a penny more.

01223 715 715
We're up your street
www.panthertaxis.co.uk

*All fares for saloon car bookings on meter within or between villages listed. Prices for 5-8 seaters available on request. See www.panthertaxis.co.uk for details

MILTON • HISTON • IMPINGTON • GIRTON • MADINGLEY • COTON • BARTON • GRANTCHESTER
TRUMPINGTON • THE SHELFORDS • STABLEFORD • CHERRY HINTON • FULBOURN
TEVERSHAM • STOW CUM QUAY • FEN DITTON • HORNINGSSEA

CHIMNEY SWEEP

J. L. WIGHT
Guild of Master Chimney Sweeps
Fully Insured.



Advice given / problems solved.

Certificates issued.
01954 253315
www.camsweep.co.uk
9 Cow Lane, Rampton

WAITING AT THE GATES

Who hasn't waited at the Hinton Way or Granham's Road level crossing gates wondering how long they'll be closed and how often they go down? We are fortunate to have a railway station in our village, but ready access to Cambridge and London and beyond is balanced with delays at the level crossings, which can be frustrating. What are the facts? This survey of the level crossing barriers on Hinton Way covers 6.30am to 6.30pm, 12 hours in total, timed over several days and not including weekends.

Observations

The station is well used: there were hardly any stopping trains that did not have passengers getting on or off and at busy times in each direction there were up to 30 passengers on the platform.

The number of trains, whether through-trains or stopping, was fairly consistent throughout the day, though the average closure time increased between 3.30 and 6.30pm. Queues of cars around 8am and 5pm were more due to increased road traffic than increased numbers of trains.

Facts and Figures (6.30am–6.30pm, Monday to Friday)	
Longest closure: 8 mins 25 secs	Average closure: 3 mins 33 secs
Through trains to Cambridge: 28	Stopping trains to Cambridge: 19
Through trains to London: 32	Stopping trains to London: 16
Total trains: 95	Total number of closures: 78
Total time gates down: 4 hours, 37 mins	Average time gates down per hour: 23 mins
Number of closures per hour: 6.5	Longest time between closures: 18 mins
Shortest time between closures: 25 secs	Number of closures > 3 minutes: 44 (57%)
Multiple trains per closure: 12 of 2 trains, 3 of 3 trains	Number of closures > 4 minutes: 16 (20%)

Comments

The average number of closures (6.5 per hour) and length of closure (23 minutes per hour) may seem a lot, but the average closure is only $3\frac{1}{2}$ minutes and the delay for each car arriving when the gates are already down will be less – which seems a small price to pay for the convenience of a local station. Understandably longer delays, which cannot be predicted, can happen and will

be frustrating: the survey recorded 3 ‘three-trainers’ which closed the gates for up to 8½ minutes and created up to 30 cars in a queue in each direction. There is a 1 in 3 chance of finding the barriers down – though it may only be for seconds.

Avoiding queues by driving along Mingle Lane as soon as you see the gates go down is unlikely to speed things up. The drive round to Freestone’s Corner will be affected by the traffic in Stapleford and the traffic lights at the cross-roads and could take 4 minutes. In that case there is just a 20% chance that you would overtake the queue from the crossing.

Is there any solution? A countdown timer estimating the likely delay could help, though it is difficult to make one reliable and accurate when several trains of different speeds from each direction are due. A pedestrian bridge like the one at Webster’s Crossing takes a moderately fit person 1 min 10 seconds to climb and descend; less time if you’re a fit but late commuter but not much help for cars, cyclists or buggy pushers. Another information board like the excellent History of Shelford might take pedestrians’ minds off the wait.



The best solution is patience, safe in the knowledge that switching off your engine will save fuel and minimise pollution, that we are fortunate to have a train station and that 80% of closures last less than 4 minutes – the length of a popular song. Don’t fume, just sing along!

Duncan Grey

COMPUTER PROBLEMS? CALL EAGLE ANALYSIS



We have 35 years experience and are Shelford based.

- Need a new computer, laptop, tablet, iPad, printer, digital camera, smart TV? We can advise on the best options and supply and install and transfer existing files.
- Need to set up Internet and network; problems with wireless deadspots? We can sort that for you.
- Dead computer or printer? We can fix it.
- Deleted your photos? We can recover them.
- Got a virus? We can remove it and prevent recurrence.
- Need paper, cartridges? We supply everything.

Call Mike Nettleton on 01223 721366 (M 07905 356468)

e-mail: info@eagleanalysis.co.uk web: www.eagleanalysis.co.uk

SOPHOS
Silver Partner



Ontrack* Data Recovery
Authorised Partner



Cambridge Cat Clinic

Feline-only veterinary clinic,
providing stress free care for both
you and your cat.

t: 01223 88 07 07

e: info@cambridgecatclinic.co.uk

www.cambridgecatclinic.co.uk

Cox's Drove, Fulbourn, Cambridge
CB21 5HE



Feline better!

GATWARD & SONS

Building on Experience

- Extensions • Conversions
- Renovations • Alterations

STAPLEFORD, CAMBS.

T: 01223 570143

M: 07525 494478

www.gatwardandsons.co.uk

AM ARCHDEACON MOTORS

Archdeacon Motors
32 Cheddars Lane
Cambridge CB5 8LD
Tel: 01223 315670
Fax: 01223 354713

www.archdeaconmotors.co.uk

matt@archdeaconmotors.co.uk

**Servicing and Repair
on all makes and
models.**

Loan car available.

Fixed price repairs.

**MOT STATION -
free re-tests.**

Established 32 years.

**Quality work always
at competitive prices.**

**Free collection and
delivery**

THE WALKERS PARTNERSHIP SOLICITORS REDUCED RATE WILL OFFER

Reduced rate wills are available every week day
from 8.00am until 6.00pm, and on Tuesday evenings until 8.00pm,
by appointment only.

Also on the Saturday mornings throughout the year - please
contact us for further details.

Reduced rates are:-

Double Wills - £210.00 plus VAT Single Will - £125.00 plus VAT

**HOME VISITS ARE ALSO AVAILABLE AT NO EXTRA CHARGE
WITHIN A 20 MILE RADIUS OF ROYSTON.**

For more information please contact:-

Fish Hill Chambers, 2-3 Fish Hill, Royston, Herts, SG8 9JY

Tel: 01763 241121

t.donnellan@walkerspartnership.co.uk

Rothwell's Carpet Cleaning

**Carpet, Upholstery
Rug Cleaning**

Family firm since 1993

**Truck mounted
equipment for deep
cleaning**

Great customer service

We move the furniture

01223 832 928

SAGE ADVICE

Whether used as a culinary herb, grain or bedding perennial, the genus *Salvia* has a versatile relationship within many human cultures. It is the horticultural value that stands out for me – diverse and vibrant blooms on scented foliage, which come into their own during the longer summer days in British gardens.

The genus contains nearly a thousand species, and finds its highest diversity in Central and South America, with the Mediterranean Basin and Himalaya also displaying large species counts. The unifying characteristic of these species is the presence of a pair of hinged stamens, which form a staminal lever on the male part of the flower. This unusual pollination mechanism is activated by a visiting bird or bee. A nose around in the flowers on your common-old garden sage (*Salvia officinalis*) should allow activation of this lever, which under the right circumstances daubs the back of the pollinator with pollen.

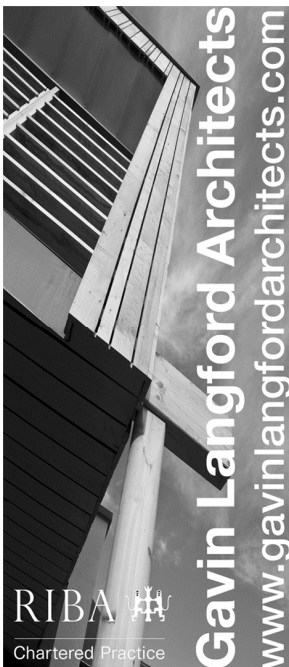
The species which cause most excitement tend to be from the New World. Many of these have colourful tubular flowers, such as *Salvia fulgens*, *Salvia guaranitica* and *Salvia concolor* or the deep purple-black of *Salvia discolour* – all of which are flowering in the Garden's Glasshouse Bays at the moment. William Robinson wrote of another *Salvia* species, the Mexican species *S. patens*, 'doubtless, the most brilliant in cultivation, being surpassed by and equalled by few other [garden] flowers'. Rather than bees, these New World cousins are geared up for hummingbirds, and the queen amongst this group is the giant Bolivian sage, *S. dombeyi*, from the high Andes, with 8cm, vivid scarlet pendent blooms.

Hopefully, this has whetted your appetite for the genus *Salvia*, which is much more than sage and chia. Many *salvia* species will be flowering right into September at the Garden, providing some late-summer, colourful and inspirational ideas for the home garden.


Alex Summers, Glasshouse Supervisor, Botanic Gardens

SHELFORD GARDEN CLUB

Please note that there will be no
SHELFORD GARDEN CLUB SHOW this year



Gavin Langford Architects
www.gavinlangfordarchitects.com

RIBA 
Chartered Practice

The *Great Shelford Village News* is unable to check or verify the warranties or representation made by their advertisers and must therefore exclude liability whatsoever arising from any advertisement in the *News* magazine, nor do any statements necessarily accord with the views of the editors.

Great Shelford Solicitors



DAVIES
solicitors advocates & mediators

- Family
- Divorce & Separation
- Children
- Civil Disputes
- Wills & Probate
- Estate & Tax Planning
- Powers of Attorney
- Court of Protection

For a quality and attentive service

Please Call: **01223 842211**

www.daviessolicitors.co.uk law@daviessolicitors.co.uk
30 Woollards Lane, Great Shelford, Cambridge CB22 5LZ

Free and easy parking

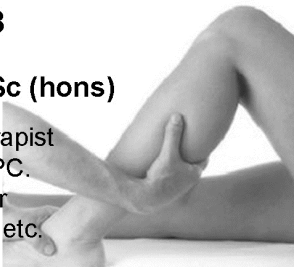
Shelford Physiotherapy

Are you in pain?

Call **01223 844 488**

Stephanie Hatter BSc (hons)

A Chartered Physiotherapist
registered with the HCPC.
Recognised provider for
BUPA, AXA PPP, Aviva etc.



ACE Cultural Tours

Cultural tours for
the curious traveller

aceculturaltours.co.uk
01223 841055

TENNIS CLUB

The Great Shelford Tennis Club Open Day, held on 3 July, was blessed with the weather this year! The Barbeque was smoking, the Pimms flowing and the courts were alive with juniors and adults pitching their tennis skills.

Being the middle weekend of Wimbledon, Mr Murray had to send his apologies as he focused on the week ahead in his quest for another Grand Slam title. That didn't matter though, David Rice (former world no 283) and Tom Hands (super talented 19 year old player) stepped in to hit balls with everyone and demonstrate top level tennis by playing an exhibition match against each other, which was seriously impressive!

The Club's coaching team 'Over and In' organised fun tennis drills through the afternoon for all ages to get involved and for those that may not have picked up a racket for a while, it gave them that moment to reconnect!

It was great to see so many non-members come along and enjoy themselves. Tennis is a great social and active sport no matter what level you play at, so if you are interested in what goes on at our Club and what it has to offer you, please email secretary@gstc.org.uk for more information.

James Diver, Chairman



SHELFORD RUGBY CLUB

Youth Registration day is **4 September** from 10am till noon on the Davey Field, directly opposite Scotsdale's Garden Centre in Great Shelford. We take children from under 7s to 18. There will be training every Sunday in September, so it is a great time to come and have a go and if you enjoy the game then you can join as members.

The season runs from the first Sunday in September through to the last Sunday in April. There will be home games, away games and tournaments. For the older children, there is also mid-week training and some of the older teams have the opportunity to go on tour.

For more details on the events and the club in general please look at the website www.shelfordrugby.co.uk or email me shelfordphysio@aol.com

Stephanie Hatter, Youth Secretary

Premier *a great deal more from your local store*

 **The Great Shelford Store:**

-General Groceries	-Fresh Meat
-Chilled Beers & Wines	-Fresh & Frozen Products
-Fresh In-Store Bakery	-Confectionery
-Newspapers & Magazines	-Toilet Requisites
-Photocopying Service	-Off-Licence
-Dairy Produce	-Dry Cleaning Agent
-Cards & Stationery	-FREE Local Delivery

Mon-Sat: 7 am-7.30 pm Tel: 01223 843307
 Sun: 7 am-2 pm 33-35 Hinton Way

JACKSON COX
 B G STOREY, FBCO

OPHTHALMIC OPTICIAN
 (OPTOMETRIST)

30a WOOLLARDS LANE
 GREAT SHELFORD

01223 840441

 **Pipe Dreams**
 PLUMBING

GREAT SHELFORD BASED
**PLUMBER AND
 HEATING ENGINEER**

Tel 01223 524531
 Mob 07960 868082

www.Pipe-Dreams-
 Plumbing.co.uk



ARTHAN
FITTED FURNITURE

new showroom
 in central Cambridge

local family business with over 16 years of experience, offering
 custom made furniture at very competitive prices

29 Hobson Street, Cambridge, CB1 1NL
 ☎ 01223 968 696
 www.athanfurniture.co.uk

LAY ELECTRICAL
Sales and Repairs
 Washing Machines
 Vacuum Cleaners
 TV, Video, etc

66 High Street, Great Shelford
 01223 842488

LOCKS
LADIES
HAIRSTYLISTS
Professionals
for your hair

all ages welcome

Tel: 842166
 Mob: 07932600824
 67a London Rd, Stapleford

CRICKET CLUB

The club seems to be experiencing a purple patch at the moment with all the teams achieving great things.

The Under 13s secured a second place position in their league, winning eight games and losing only twice. This was hugely impressive given that they lost every game last season. Stuart Creed, the coach, has done a marvellous job in instilling excellent team spirit and encouraging individual players to improve their skills. All the team did well and there were particularly strong performances from skipper Alex West, Theo Ball and Seb George with the ball and Tom Kerins, Ben Will, Harry Calne and Omar Mahroof with the bat. Harry Calne has been a brilliant acquisition behind the stumps. His sister, Alana, joined us for the last few games and looks like a very promising bowler.

The Under 12s also had a successful season under the calm management of coach Mark Milne. They finished third in their league and secured a memorable win over Saffron Walden in one of the best youth games seen on Great Shelford Rec. Tara Dambaza and Ben Floto excelled with the bat and Cesca Regnier-Wilson and Ryan Clarey took wickets. Ben Floto's pick up and throw to run out the opposition's best batsman earned him the champagne moment. In another match, Archie Main took a skier falling backwards over his head, a catch a Test fielder would have been proud of. Skipper Theo Ball took many wickets during the season with his brilliantly deceptive leg-spin and Omar Mahroof scored hundreds of runs as well as proving to be an extremely accurate fast bowler. Ben Floto exudes class as a batsman. Byron Miller has shown he is also a very good bat and his twin, Finlay, has bowled well.

The adults have also been very successful. The Second team are top of Division Five South of the CCA Junior League, almost neck and neck with Royston Twos. Chris Munday and Danny Nicholls have been the outstanding players with bat and ball but Stuart Creed has taken vital wickets and skipper Gion Martin has chipped in with important runs. Colin Inglesant is as steady as ever with the ball as is Chris Pegg with the bat, so we are hopeful that we can continue our good form and gain a second successive promotion. Our only defeat has come against Royston, so the return fixture at home to them looks like a title-decider already.

The Firsts, under captain AP Stafford, are top of CCA Senior One having won eight out of ten league games including four home games on the trot. Three of these matches were crushing victories, with Kane Munday leading the way with big scores in his typically powerful front-foot style. Kane tops the league's batting averages and his efforts were rewarded with a place in Cambridgeshire's Under 25 side this season, a great honour for him and the

club. Dan Heath is also high up in the League's batting stats and is showing again why he is the best wickie in the League. Tom Barnard has returned to the club and is taking wickets and scoring runs as an opener when we really needed them when we found ourselves struggling in a rain-affected match against Thriplow. In the only close game of late, the two stalwarts Alan Sutton and Paul Mortlock stepped up to the challenge to support Dan Heath to win the day. Paul Ellum is the leading wicket-taker in the League and Mark Milne leads the League's bowling averages. Not bad for a couple of players whose combined years of playing for Great Shelford total's over 50.

If we win Senior One, we shall be appearing in Tucker Gardner Two next year, uncharted territory for us and certainly a challenge, but we seem to be overcoming tough challenges these days.

Brian Higgins

COUNTRY MARKET

Now that we are well into the holiday period, we are often asked when the market closes. The answer is that Shelford Country Market does not stop for a summer break.



However, we are on the look-out for new producers. Bakers, gardeners and crafts-folk, where are you? It is so easy to become a Country Market producer and the membership fee is literally a few pence. We are a co-operative social enterprise and your produce will be displayed like-with-like on the appropriate table. Hence you don't have to come with a great mass of produce each week. In fact it is best to start off with a little and build up. Yes, there are some 'rules and regs'. Help and guidance is always at hand and you can read more about us on www.country-markets.co.uk

We are in the Memorial Hall every Wednesday morning. There is no admission charge and you are free to browse. Everything you see is home-made, home-grown or hand crafted.

The food and craft sections are always well stocked, but we are now at the time of year when I think the garden section is at its best. The tables are laden with garden plants, freshly cut garden flowers and freshly picked home grown produce. Look out for young carrots, a variety of beans, courgettes, tomatoes, cucumbers, some soft fruit and more, and early plums won't be far away. Freshly picked produce is always sought after, so if you have a garden surplus the country market could be your outlet! Come and talk to us.

The Market is in the Memorial Hall, Woollards Lane every Wednesday morning from 8.30am to 11.30am.

Dorothy Doel

WHAT'S ON IN AUGUST

A round up of what's on at some of the venues near us. For more information, times, ticket prices and bookings, please contact the organisation. Please note that this information has been taken from websites, can be subject to change and may already be fully booked.

CAMBRIDGE ARTS THEATRE

9–20	<i>The Shakespeare Revue</i> Shakespeare meets Showbiz in cabaret-style musical
10–21	<i>The 3 Little Pigs</i> for Age 3+
Telephone: 01223 503333 Web: www.cambridgeartstheatre.com	

CAMBRIDGE SHAKESPEARE FESTIVAL

9–20	7.30pm	<i>The Comedy of Errors</i> at Trinity College Gardens
9–20	7.30pm	<i>The Winter's Tale</i> at Robinson College Gardens
9–20	7.30pm	<i>Henry V</i> at St John's College Gardens
For further information go to www.cambridgeshakespeare.com		

SAWSTON CINEMA

8	10–4pm	Workshop: <i>Animated Superhero Smack-Down</i>
9–12	10–4pm	Workshop: <i>Sculpting with Light</i>
15–16	10–3.50pm	Workshop: <i>Sonic Pi</i>
17–19	10–4pm	Workshop: <i>Songwriting</i>
Telephone: 01223 712825 Web: www.sawstoncinema.org.uk		

SCOTSDALES

17–19	11–3pm	Tractor Ted Weekend bouncy castle, giant jigsaw, activity trail and interactive storytelling
Telephone: 01223 842777 Web: www.scotsdalegardencentre.co.uk		

STAPLEFORD GRANARY

15 August to 1 September	2016 Archaeology Excavations. Volunteers wanted. Contact ACE for more information.	
25	10–12.30pm	Archaeology Children's Morning for Ages 8–12
29	1–5pm	<i>Archaeology Open Day</i>
Telephone: 01223 849004 Web: www.staplefordgranary.org.uk		

JO ALEXANDER

Teak & Wicker Garden Furniture and Accessories

Visit our Showbarn or buy online.



01954 267 857

www.joalexander.co.uk

Chiropodist

David Levy MSSCh MBChB

Home visiting practice

Saturday morning clinic
held at

Billson Opticians, Sawston

Established since 1993

Mobile: 07966 136972

Home : 01223 834634

NICK WEBB

CABINETMAKER

FINE FURNITURE, CUSTOM
DESIGNED & HAND MADE
EXCLUSIVELY FOR YOU.

01223 701914

WWW.NICKWEBB.BIZ



Computer Services

For the home or small office

Software/hardware: PC, Mac or tablet

Virus & Malware removal

Network/wireless/broadband setup

Windows 10 Upgrade help

No-fix-no-fee, free consultations
Maximum fee £90 Alan Briggs 833574



Square & Compasses

Home cooked food including Sunday Lunch

Outside Seating Area Car Parking

Tel: 01223 843273

The Plough

Open every day 11am to 3pm, 5pm to late

Sky Sports Great Beers

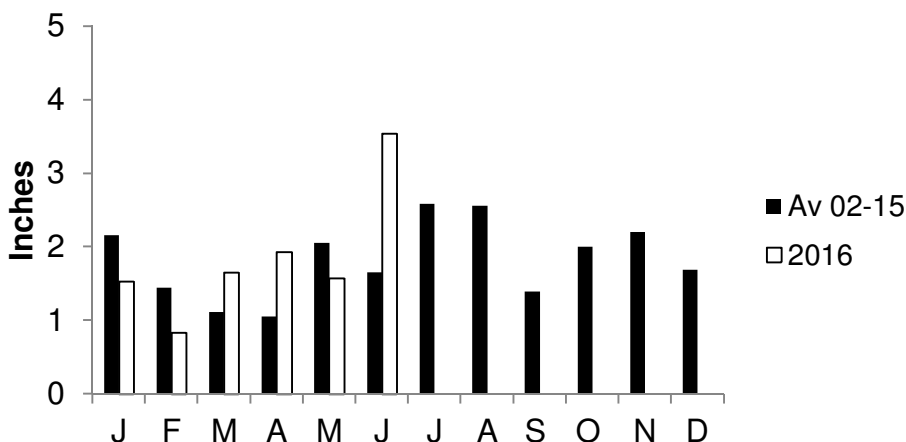
Tel: 01223 847986



WANDLEBURY

2	10–12pm	Summer Holiday Activity: <i>Stick Fun for Ages 5+</i>
3	10–12pm	Summer Holiday Activity: <i>Animal Tracking for Ages 3–6</i>
10	10–12pm	Summer Holiday Activity: <i>Nature Safari for Ages 5+</i>
12	10–4pm	Summer Holiday Activity: <i>Wild Art for Ages 8–12</i>
Telephone: 01223 243830 Web: www.cambridgeppf.org		

Great Shelford Village Rainfall 2016



NOTE

The *Great Shelford Village News* is published by the Editorial Committee, whose members are delighted to receive the many regular and occasional contributions that make it all possible. **The Committee accepts such contributions in good faith, but cannot take responsibility for the accuracy of information contained therein.** The Committee, of necessity, reserves the right to amend or reject items, for a variety of reasons. In these cases (unless the changes are minor), every reasonable effort will be made to contact the contributor to obtain agreement.

Editorial Committee

LOCAL ORGANISATIONS

Badminton (Little Shelford)	Rosie Cranmer	513572
Bowls Club	Wendy Seekings	843416
Brownies, Guides, Rainbows	Lisa MacGregor	843021
Bunch – Feast	Duncan Grey	842191
Carpet Bowls	Margaret Kelly	473520
Citizens Advice Bureau	Cambridge	0844 8487979
Community Association	(for booking Memorial Hall) Sheila Tilbury-Davis	844384
Country Market	Dorothy Doel	843946
Cricket Club	Mrs M Ellum	842394
Darts League	Mr D Matthews	845287
Football Club	Terry Rider	01354 680661
Free Church		842181
Friends of Shelford Library	Daphne Sulston	842248
Garden Club	Helen Chubb	845032
Great Shelford Friendship Club	Cheryl Mynott	845435
Health Centre	Ashen Green, Great Shelford	843661
Mobile Warden Scheme	Jackie Noble (Wdn) 700920	Jenny Morris (Chair) 846332
Parish Church Bellringers	Ann Smith	577980
Parish Church Community Room	Mary Lester	842411
Parish Church Friends	Bob Doel	843946
Parish Church Sunday Club	Joanne Staines	07790 415732
Parish Church Wardens	Dianne Fraser 562731	Stella Nettleton 832290
Parochial Charities	Mary Lester (Clerk to the Trustees)	842411
Police	Non-emergency number	101
Rainbow Pre-School	Alison Tomlin	07985 216603
Royal British Legion	Gillian Farrar	840947
Rugby Club	Colin Astin	842154
Sawston Sports Centre	The Village College	712555
Scouts and Cubs	Jillian Hardwick	840066
Scout & Guide HQ	Jenny Grey	842191
Shelford & Stapleford Men's Assoc.	Chris Everitt	846984
Shelford & Stapleford Strikers	Derek White	561753
Shelford Primary School	Alison Evans, Headteacher	843107
Shelford Support Group (transport to hospital etc.)	Mrs Wilkinson 843856 Mrs Newman 842514	Mrs P Legge 843275 Mrs Carol Bard 571380
South Cambs DFAS	Sheila Tilbury-Davis	844384
Sunnyside Preschool Stapleford	Jane Doyle	707817
Sustainable Shelford	Peter Fane	843861
Stapleford Choral Society	Adam Pounds	843468
Tennis Club	Lydia Seymour	07790 498875
Twinning Association	Penny Pearl	842483
U3A (Sawston Branch)	Mr D Cupit	871527
WI	Vanda Butler (Secretary)	561053
Youth Initiative	Ollie Leonard	07768 545915

Village website: www.shelford.org

THE SHELFORD FEAST 2016

