

Great Shelford VILLAGE NEWS

VOL XVII No 12

SEPTEMBER 2015

PRICE 40p

Garden Club Annual Show

Shelford Fun Run



*Proposed traffic changes in Great Shelford:
more details*

CONTENTS			
Parish Council	1	VJ Day Commemoration	23
Planning Applications	2	Sewing Group	23
Planning Decisions	3	Football Club	25
County Council	3	How to contact the <i>Village News</i>	25
Cemetery Work Party	3	Rugby Club	27
Heidi Allen MP	5	Twinning Association Cake Sale	27
Mobile Warden Scheme	5	Cricket Club	29
Highways Proposals & Village Meeting	6	Bowling Club Table Top Sale	29
Shelford Feast: Grants Applications	8	Little Shelford Heroes & Villains	31
Fowlmere Tea Party	8	Shelfords WI	31
Parish Church	10	Riding for the Disabled	33
Twinning Association	12	Barton Drama Group	33
Engage at Great Shelford Library	12	Review: <i>Prime of Miss Jean Brodie</i>	35
Free Church	14	August	37
Playscape	17	Library Talk	38
Shelford Medical Practice	18	Sawston Medical Practice	38
Care Network	18	Sawston Adult Education	39
Reader's Letter: Cycle Route	20	Solar Photovoltaic Panels	41
Creative Writing	20	Garden Club Annual Show	42
Diary	22	What's on in September	43
Next Issue of <i>Village News</i>	22	Rainfall	44
Shelford Fun Run	23	Local Organisations	

GREAT SHELFORD PARISH COUNCIL				
CHAIRMAN	Mr C Nightingale	844763	VICE CHAIRMAN	Mrs B Hodge 842553
CHAIRMEN OF SUB-COMMITTEES				
Cemetery and Allotments	Mrs H Harwood	840393	Highways	Mr M Nettleton 721366
			Pavilion and Recreation	Mr M Watson 844901
Planning	Mrs B Hodge	842553		
MEMBERS				
Mr S Chittenden	07801 207627	Mr B Shelton	841085	Revd S Talbott 847068
Mr D Coggins	842598	Mr P Fane	843861	
Mr B Ashhurst	07803 001985	Mrs A Milson	841100	
CLERK TO THE COUNCIL Mr M Winter 07870 807442 parishclerkgreatshelford@gmail.com				
COUNTY COUNCILLORS				
Dr G Kenney	211547	Mr A G Orgee	891464	
DISTRICT COUNCILLORS				
Mr C Nightingale	844763	Mr D Whiteman-Downs	845954	
Mr B Shelton	841085			

GREAT SHELFORD PARISH COUNCIL SUMMARY OF MINUTES OF JUNE MEETING

PUBLIC SESSION

Five members of the public attended, expressing their interest in traffic congestion and parking on Woollards Lane. Cllr Nightingale gave a brief explanation on some of the proposed changes with a more detailed explanation in the highways report. Interest was also expressed in more open access to the minutes. Cllr Nightingale assured the public that openness was a standard for the Parish Council.

PRESENTATION BY MARTIN SCOTT OF SCOTT PROPERTIES

Mr Scott summarised the proposal of Scott Properties for a 25-acre housing development on Mingle Lane, within the green belt. The proposal is in the early stages of development and options on housing types are still under review. 77% of the development falls in Stapleford, thus further discussions would be via Stapleford Parish Council.

MINUTES

Minutes of the meetings of 17 June were confirmed as accurate records and were signed by Cllr Nightingale.

REPORTS OF ELECTED REPRESENTATIVES

District Councillor Shelton confirmed the pausing/suspension of the current Local Plan but officers are committed to sending their report on the testing of alternatives to the development strategy by the end of the year.

County Councillor Orgee reported that the free bus service to Sawston Village College would be withdrawn after the appeal was lost. One option to address the problem could be to apply for a local highways initiative fund to support additional safety features for cyclists.

REPORTS OF STANDING COMMITTEES

Highways At a meeting on 14 July updates on the proposed short term changes to relieve traffic congestion and some longer term options for consideration/consultation were identified. A village meeting is planned for 8 September to engage in further consultation. (see page 6).

Planning At a meeting held on 14 July four planning applications were reviewed and it was reported that one planning refusal had been issued by South Cambridgeshire District Council.

Recreation Ground and Pavilion The skateboard ramp refurbishment was completed and back in full use. The contractor was to recommence rectification work on the outstanding Pavilion issues on 21 July.

Playscape Working Group The PSWG gave a presentation and update on the village views gathered over the Feast and a review of the three Landscape Architects considered for use in any redevelopment. Erect Architecture was the unanimous choice of the PSWG. Funding support was still a challenge. The Parish Council agreed to a £5,000 start-up funding which, together with the £1,200 currently raised by the PSWG, allowed the group to register as a charity and start the first design concept stages.

FINANCE

Financial settlement of 10 accounts for a total of £11,626.79 was approved.

PLANNING APPLICATIONS PARISH COUNCIL COMMENTS

S/1408/15/FL	Dr H. Chapman 24 Church Street	Timber and tile carport
No objections		

S/1612/15/FL	Mr & Mrs Hutton 149 Cambridge Rd	Single storey rear extension
No objections		

S/1732/15/FL	Learig Ltd 228 Cambridge Rd	Minor material amendment to S/1162/14/FL
No objections		

S/1733/15/LD	Learig Ltd 228 Cambridge Rd	External cladding, replacement porch and roof extension
No further information		

S/1698/15/FL	Mr A. Reynolds 9 Davey Crescent	External wall insulation
No objections		

S/1783/15/FL	Mr & Mrs Charles Duthie Smith 18 High Green	External alterations and change of use from sorting office to dwelling
No objections		

S/1277/15/AD	Mr. Elkins 11 High Green	Erection of house sign (amended plan)
No objections		

PLANNING DECISIONS

Extensions were approved at 5 Redhill Close, 14 Ashen Green, 15 High Street, 143 Cambridge Road and 18 High Street. *BH*

COUNTY COUNCIL

Changes are taking place in Adult and Children's Services as a result of the change in financing from Central Government.

Everybody knows that taxes are not enough to pay for the weak, frail and vulnerable in our society. As the population gets older more people need help. It is predicted that in Cambridgeshire the number of seriously disabled people will rise from 8,978 in 2015 to 9,855 by 2030. They need our help and deserve our compassion, but the government is planning to give us less money year on year in line with our British GDP. We know if we go on financing the people who look to us for care in the way we have in the past, we will not be able to do anything else in the County. No pothole filling, no improvement in education, not anything else.

So the Council has been looking at new ways to look after people who cannot look after themselves. We will continue to be a safety net for people in crises, but we will be more proactive in finding people who might need future services, before problems emerge. When families need us we will join with them and make plans that focus on their progression to independence. Where people need long term support we will decide whether spending money now will prevent problems later, and whether family and friends might support them and allow them to remain independent. We will create opportunities for needs to be met in the Community and the County will see itself as a solution of last resort. This is a major shift in delivery of care and will be developed over the next five years.

Gail Kenney and Tony Orgee

CEMETERY WORK PARTY

Now the cooler days of September are upon us, it's time to do a bit of tidying up in the cemetery, so a work party will be meeting on 17 September. There are various tidying up jobs to be done: weeding, pruning, and also planting around the new rose arch. I would be particularly grateful if anyone feels they have the stamina to help dig out the compost bins. Please come and help if you can!

When: Thursday 17 September at 10am

Where: Cambridge Road cemetery

Helen Harwood

STEVE the PLUMBER

Steve the Plumber is a local plumber with a friendly, helpful and reliable service.

Small or larger jobs undertaken. Competitive rates.

Please call 07803922517
or email
steve_the_plumber@me.com



NB HORTICULTURE LTD
All types of garden work
& landscaping
www.nbhorth.co.uk

Hedge & Shrub supplier
www.cambridgehedges.co.uk
Mr N Barber BSc RHS Cert

109 Cambridge Road
Great Shelford, CB22 5JJ

07789 564042
01223 977306

**The Most Thorough
Cleaning Ever Seen
or it's FREE**

ART OF CLEAN
A CLEAR DIFFERENCE IN QUALITY

WE CLEAN:

- Carpets,
- Upholstery & Leather
- Fine Rugs
- Tiles & Stone

"Your company provides an excellent reliable and friendly service and is very business like in its dealings. Excellent, punctual advice and service."

Mrs Davis, Great Shelford



-10%
Discount to all
new customers

Laurence & Pierre de Wet

**For a Free "Audit
& Quotation"
call now:**

01223 863 632
www.artofclean.co.uk



Self Storage in Sawston

Clean, Dry & Secure. 24/7 Access

www.MegaStorage.co.uk

01223 833 777

GOG MAGOG HILLS

Farm Shop • Butchers • Cheese Shop • Café



Tue - Sat 9am - 6pm Sun 10am - 4pm
01223 248352 A1307 Shelford Bottom
www.gogmagoghills.com

HEIDI ALLEN MP

A parliamentary reception saw Heidi sponsor South Cambridgeshire based Alzheimer's Research UK as they looked to MPs from all parties for help in identifying desperately needed funding for research. Heidi's work on the House of Commons' Work and Pensions Select Committee has begun to take shape. The agenda has been set and a meeting is planned with the local Papworth Trust to discuss the government's work programme.

The cross party relations of the select committee have not been left in Westminster though. Heidi held a meeting on 17 July with all non-Conservative local councillors so they could raise any issues they had.

With a growing economy comes local innovation. Heidi has nominated Girton based Visualplanet's touchfoil product for an award from the All-Party Parliamentary Manufacturing Group. Speaking about the work carried out by Visualplanet Heidi said 'This is one of those rare examples of a simple idea being turned into a phenomenal business opportunity ... I challenge anyone not to be impressed by this example of British innovation at its best.'

If you would like to contact Heidi about an issue, book a surgery appointment or find out what else she has been up to, visit her website www.heidisouthcambs.co.uk, email heidi.allen.mp@parliament.uk or telephone 01954 212707. The next surgery date is Friday 18 September (Bassingbourn, 16:00–17:00).

Paula Wade, Senior Parliamentary Assistant

GREAT SHELFORD MOBILE WARDEN SCHEME

Do you have an elderly relative in Great Shelford who needs reassurance, perhaps when you are away or regularly when you are at work? Perhaps you are feeling a bit less able than you used to? Great Shelford Mobile Warden Scheme is here to help.

For £23 a month subscription, the wardens provide daily checks by phone if required, including weekends, emergency visits if needed, help with paperwork, small items of shopping, prescriptions or just a friendly face giving a few words of encouragement and keeping members in touch with social opportunities. Regular visiting by the same person provides a reliable gauge to well-being.

The warden's number is in the list of Local Organisations at the back of the *Village News*.

Jenny Morris, Chairman

HIGHWAYS PROPOSALS AND VILLAGE MEETING

There will be a Village Meeting in the Memorial Hall, at **7.30pm** on **Tuesday September 8**, to present the proposed changes on traffic and parking in the village. (See *Village News* article on page 4 of our August issue)

Before this meeting, Mike Nettleton (Chairman of Highways Subcommittee) will be holding brief consultation meetings in the Pavilion on the Rec. Two of these will be held before we go to press, but the third will be on **Thursday 3 September** from **7 to 7.30pm**.

The main objectives of the proposals are to improve safety for pedestrians, cyclists and drivers, while as far as possible retaining parking spaces and supporting the operation of local businesses. Any changes will have to be funded by the village, although a Local Highways Improvement Initiative grant may be available.

Minor changes involving changes to parking restrictions and road markings are proposed for High Green/High Street, Tunwells Lane/Elms Avenue, and Hinton Way.

In Church Street it is proposed to impose a 20mph zone and also to extend the double yellow lines from the Water Bridges by approximately 26m, to allow drivers from Little Shelford to see oncoming traffic.

Proposed changes to Woollards Lane (see map on next page)

1 20mph zone starting at traffic lights and extending the whole of Woollards Lane, down Church Street to the water Bridges and down High Street to Lloyds bank junction. The zone will apply to all the side roads in the zone.

2 Two additional parking spaces east of the Deli.

3 The south side of Woollards Lane (except the parking bays at the Memorial Hall and Boots/Tuckers) to be double yellow lined and no loading.

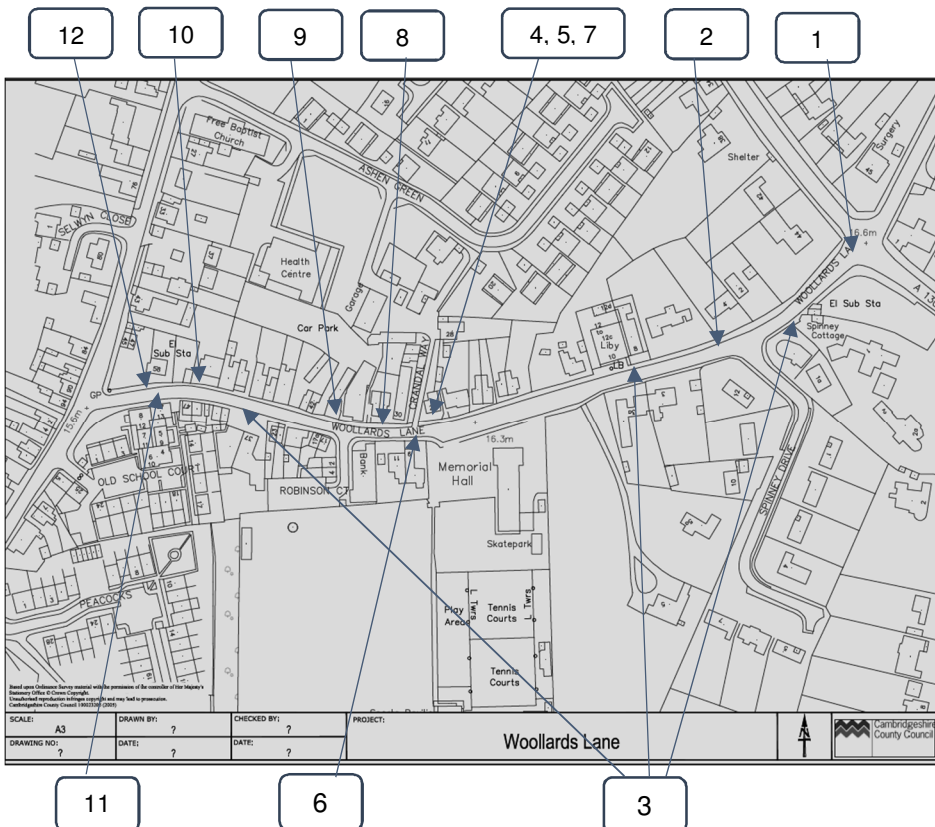
4 Disabled bay outside bike shop moves to outside Days.

5 Build-out of approximately 1.5m projecting into the road from the pavement outside Days, with drop kerbs. This will assist pedestrians crossing to/from the Memorial car park and prevent parking on the corner of Rayment's driveway.

6 Improvements to the pavement outside the Memorial car park, including a drop kerb.

7 'Give way to oncoming vehicles' sign outside Rayment's driveway.

8 HGV only loading and unloading bay replacing the two bays outside the bike shop, but significantly longer. This will allow businesses to make deliveries when other arrangements have failed (e.g. in case of bad weather) and also prevent car parking in this area.



9 Zebra crossing outside Cambridge BS. This will improve pedestrian safety and assist in slowing traffic. Also, taken with the HGV loading bay, it prevents any parking between the car park exit and Rayment's driveway and therefore clears one of the major current bottlenecks.

10 Approximately 5m of yellow line at the end of the current parking bay will be removed. This will allow one more parking space.

11 Pavement from Tuckers Rentals to be widened and a higher kerb introduced to stop motorists driving on the pavement. This will also need a bollard at the end of Tuckers Rentals parking.

12 'Give way to oncoming vehicles' sign at end of parking bay.

The full set of plans (some of which will be draft) are available on www.greatshelford.info/home/proposed-great-shelford-road-changes, in the library, and by email from Mike Nettleton, who can be contacted on mike.nettleton@eagleanalysis.co.uk, 01223 721366 or 07905 356468.

JW from information provided by MN

SHELFORD FEAST: APPLICATION FOR GRANTS

The Shelford Feast aims to both entertain and to raise money for local good causes. Well, I think we have entertained you for this year, with a very busy and popular Feast and a variety of entertainments throughout the week.

Now we look at whether we can help your local good cause with financial grants from our profits. If you feel you can put a good case to the Feast committee please complete the claim form at <http://www.shelfordfeast.co.uk/beneficiaries/> and say how you have used grants in the past and how you might use them in the future.

The criteria for a grant from the Shelford Feast include (in no particular order):

- Being a **local** charity or non-profit-making organisation
- Financial **need**, especially where there is no alternative funding source
- Helping particularly the **young**, the **old** or the needy
- Where a contribution would make most significant **impact**
- Where there is a significant **contribution** to The Feast by the organisation or its supporters

Completing the form is no guarantee that you will receive a grant – though not completing the form guarantees that you won't!

The deadline is September 30. We look forward to hearing from you. Oh yes – and we'll see you at The Shelford Feast! Sunday July 10 2016.

Duncan Grant

Tea Party

Sunday 27 September from 11am to 3pm
Fowlmere Village Hall

Tickets £12 Includes sandwich lunch, face painting, craft activities, mad science show, raffle, Anna Marriage Photography

Dress up in your favourite fancy dress!

Extras: pony ride (weather permitting), pottery painting

To buy tickets visit www.justgiving.com/EilishsTeaParty

For more information contact angela.email@mac.com



In memory of Eilish



The Beads of Courage programme is sponsored in the UK by *Be Child Cancer Aware* and we would like to raise enough money to sponsor and maintain the Beads of Courage programme at Addenbrookes Hospital, Cambridge in Eilish's memory.

"Everywhere I look
I keep seeing..."

SOLD

SUBJECT TO CONTRACT

**Tucker
Gardner**

01223 845240

TUCKERGARDNER.COM

The experts on your doorstep

FCM CARPENTRY

Mobile No: 07525140796

Email: fergus.matheson@hotmail.co.uk

Website: www.fcm-carpentry.co.uk

**FREE ESTIMATES &
REFERENCES
AVAILABLE**

*All aspects of carpentry
and building*

*Bespoke Curtains
& Blinds ...*



Sue Crow Tel: 01223 836498

Email: sue@suecrowcurtains.com

www.suecrowcurtains.com



Technical Moves

Recruitment Specialists

Architecture,
Building Services,
Civil Engineering,
Property & Surveying

01223 845333

technicalmoves.com

34A Woollands Lane, Gt. Shelford

**D Hatter
The Gas Specialist**



Carbon Monoxide Kills
75% of last years poisonings
were due to lack of servicing!

.....
D Hatter, specialist in servicing,
repairs and installation of
DOMESTIC gas appliances
including boilers, fires
and cookers.

.....
Improve efficiency, save fuel,
give your central heating
system a new lease of life,
have it POWER FLUSHED

t :01223 844866
m :07747 444435
e :davidhatter1@aol.com
w :thegasspecialistltd.co.uk





GREAT SHELFORD PARISH CHURCH

www.stmarysgreatshelford.org/

A very warm welcome to your historic parish church – please call in and enjoy the sacred space.

VJ 70 – A Vigil Service to Commemorate the End of the Second World War

There will be a Vigil Service held at the War Memorial, Great Shelford on the evening of **Sunday 6 September at 6pm** (if wet, in the Parish Church). The service will be using material taken from the National commemoration led by the local clergy. Families whose relatives died in the conflict or who served in any way are specially invited to take part. Refreshments served afterwards at the Plough.

Cambridgeshire Historic Churches Trust – Ride, Drive or Stride Day: Saturday 12 September

A sponsored event (details in the parish church) in aid of the Trust, which gives grants to historic churches across the county. The idea is to visit as many open churches in the day as possible – an enjoyable day out which helps to assist churches like our own.

Pilgrimage Visit to Norwich Cathedral: Sunday 20 September

The group will leave the village at 11am, arriving in Norwich around 12.30 pm. This gives us at least an hour to see the city centre before returning to the Cathedral at 2pm. The Dean will welcome us and lead a guided Pilgrim Tour; we will then attend Choral Evensong at 3.30pm and have a Cream Tea in the Refectory, returning to be back for 7.30pm. The visit will be shared with St Andrew's Stapleford. The total cost of the visit will be £17.50, including transport, cream tea and a gratuity for the driver.

Harvest Festival and Gift Day: Sunday 4 October

A highlight of the autumn is always Harvest Festival and there will be a chance to support local good causes and those in need as part of the celebrations. The weekend also includes an annual **Gift Day**, where we encourage generous financial giving to support the work of the parish church. We are making a special appeal this year in order to help fund new work across the community. Please do consider if you could help – we do need to widen our giving support and would welcome your assistance. Helping to support a full-time priest in charge and now a part-time assistant curate so that they have the resources necessary to make an impact is a real gift to the wider community. Please respond to our appeal if you can.

Delighted that we will be able to have a **Harvest Lunch**, as in previous years, in the Memorial Hall at 12.30pm. Thank you to Dorothy Doel for offering to coordinate things. Offers of help are welcome – please contact Dorothy. Tickets will be available soon: adult £7.50, child 5–11 £2.00, under 5s free. From Bob or Dorothy Doel (email dorothy@woodlandsroad.plus.com, tel 843946)

Diocesan Pilgrimage to the Holy Land 2016

Bishop Stephen will be leading a Diocesan Pilgrimage to the Holy Land in February 2016 and the publicity materials for the visit have just been made available (copies of the brochure are at the back of church). If you require further information, please contact the Revd. Alan Partridge (a.partridge7@ntlworld.com) who is coordinating the pilgrimage on behalf of the Bishop.

From the registers:

Funeral: 29 July Bob Mottershead

Regular Services

Daily: 9am Morning Prayer
5pm Evening Prayer

Wednesday: 9.30am Holy Communion (BCP 1662)

Sunday: 8am Holy Communion (BCP 1662)
10am Parish Communion, our main Sunday service.
6.30pm Evensong (BCP 1662)

For further information about Great Shelford Parish Church

visit our website: www.stmarysgreatshelford.org/

Priest in charge: The Revd. Simon Talbott 01223 847068 or 0705 0042616, or
vicar@saintmarysgreatshelford.org

Assistant Curate: The Revd. Monica Cameron 01223 779780 or 07985 304860,
or curate@saintmarysgreatshelford.org

Parish Administrator: Katharin Page: 07710 518220 or
katharinpage@yahoo.com.

St Mary's Great Shelford is a Registered Charity – No: 245456

TWINNING ASSOCIATION

The Association took part as usual at the Shelford Feast and, in common with everyone else, we were delighted that the rain held off until later in the afternoon, by which time plenty of people had come to the rec. Our tombola of French goods was again a success, and in addition quite a few people tried their hand at our version of *boules*. The Feast also offered an opportunity to chat to people interested in the twinning.

Our next event is our annual cake and bake sale on Saturday 26 September, held, by kind permission of the staff, on the forecourt outside Boots the chemists (see page 27).

For further information on twinning events past and future please see our website www.shelfordtwinning.org.uk. Penny Pearl

Engage at Great Shelford Library

Cambridgeshire history on your computer – the library on your laptop



Talk by Mike Petty (Cambridgeshire Association for Local History)

Wednesday 23 September 2.00–3.30pm

Due to the increasing popularity of Engage, tickets are now required (available from the library or phone 0345 045 5225). Numbers will be limited to 30. Free, but donations towards refreshments welcomed.

Adults only, please ask a Librarian for Children's Events

COMPUTER PROBLEMS? CALL EAGLE ANALYSIS



We have 35 years experience and are Shelford based.

- Need a new computer, laptop, tablet, iPad, printer, digital camera, smart TV? We can advise on the best options and supply and install and transfer existing files.
- Need to set up Internet and network; problems with wireless deadspots? We can sort that for you.
- Dead computer or printer? We can fix it.
- Deleted your photos? We can recover them.
- Got a virus? We can remove it and prevent recurrence.
- Need paper, cartridges? We supply everything.

Call Mike Nettleton on 01223 721366 (M 07905 356468)
e-mail: info@eagleanalysis.co.uk web: www.eagleanalysis.co.uk

SOPHOS
Silver Partner



REGISTERED
PARTNER

Ontrack® Data Recovery
Authorized Partner



Personal Fitness Training in your own home or private studio in Little Shelford.

Contact Matt Parsons, on
07766 825 915 or
matt@cambridgept.com,
for a free consultation.

See www.cambridgept.com
for more information.

Leaf & Lawn

Specialists in:

- * All Trees
- * Hedges
- * Stumps
- * Clearance

0800
2061570

Call us today!

Eastern regions 2009

Business of the year!



Archdeacon Motors
32 Cheddars Lane
Cambridge CB5 8LD
Tel: 01223 315670
Fax: 01223 354713

www.archdeaconmotors.co.uk
matt@archdeaconmotors.co.uk

Servicing and Repair
on all makes and
models.
Loan car available.
Fixed price repairs.
MOT STATION -
free re-tests.
Established 32 years.
Quality work always
at competitive prices.
Free collection and
delivery

THE WALKERS PARTNERSHIP SOLICITORS REDUCED RATE WILL OFFER

Reduced rate wills are available every week day
from 8.00am until 6.00pm, and on Tuesday evenings until 8.00pm,
by appointment only.

Also on the Saturday mornings throughout the year - please
contact us for further details.

Reduced rates are:-

Double Wills - £210.00 plus VAT Single Will - £125.00 plus VAT

*HOME VISITS ARE ALSO AVAILABLE AT NO EXTRA CHARGE
WITHIN A 20 MILE RADIUS OF ROYSTON.*

For more information please contact:-

1-3 Lower King Street, Royston, Herts SG8 5AJ
Tel: 01763 241121

t.donnellan@walkerspartnership.co.uk

Rothwell's Carpet Cleaning

Thorough, professional
cleaning of Carpets,
Upholstery and Rugs.

Family firm est 1993
Truck mounted cleaning

**100% satisfaction
or its free**

*If you use us, you'll
recommend us.*

**07545 962 026
01223 832 928**

www.rothwells.biz



Great Shelford
Free Church

Shelfordfreechurch.org.uk

A REFRESHING TIME

It's still holiday season as I write (so it's raining!) but you will be reading this in September which for schools, colleges, organisations and groups usually means a new year of activities will be getting under way. Do you approach this with vigour or trepidation? I always find it a refreshing time; sometimes more so than the summer break as I am glad to get back into a routine. Over the summer, I plan to do this and that. However, the time just whizzes past and I seem to do less than when I am busy!

At the Free Church, I think we have mentioned before, we have been spending time this year 'being still'. This comes from a Bible verse, Psalm 46:10, which prompts us to 'Be still and know that I am God'. It isn't that we are all sitting around doing nothing, nor being super contemplative. However, we are acknowledging that we need to make sure that we are doing things for the right reasons and not just because we have always done something and always done it in a certain way. As Christians, this means asking if what we are doing is because we believe God wants us to do so or are we just doing our own thing.

I think the principle applies to all walks of life, otherwise we can get stuck in a terrible rut and go about what we do wearing blinkers, not really appreciating what is happening around us, being pulled along in a current that seems too difficult to swim against allowing ourselves to go with the flow.

I am not particularly political, but it is interesting to hear the parties reviewing their principles as they seek new leaders, new directions and manifestos in the wake of the general election.

So, may I encourage you also to take stock? Are you happy or is something worrying you? Are you stuck in a rut? What can you do about your situation? There will always be something even in the most difficult of circumstances. The answer may not be immediately obvious, but I encourage you to persevere and seek help if needed to see this through. Find someone you trust to give you good advice. If we at the Free Church can help, then please do ask.

As we start this 'New Season', let it be a 'refreshing' time: a time when you take a moment to be still and work out where you are going and why.

David Baslington (Elder, Great Shelford Free Church)



Creative worship for all ages @ Tea Time Together

20 September: 3T in the Park at Great Shelford Park

This will be a chance to picnic together and play some great family games like rounders, frisbee and football. Just come along with your picnic and a blanket.

3T is an informal event for all, whatever age or phase of life you are in. Some events are outdoors and will require suitable clothing, some inside in a more relaxed, 'civilized' setting. **3T** will always be creative, informal and spiritual.

For more details, contact Diana Parr:

Email: childfam@shelfordfreechurch.org.uk; tel 01223 842181

or consult the church website: shelfordfreechurch.org.uk

Create & Share @ Great Shelford Free Church Hall (Ashen Green Entrance)

09.30–12.00 & 13.00–15.30

Thursday 10 September: 'Free and Easy'

Bring the project you meant to complete in the Summer or make a dress for 'Dress a Girl Around the World' project ... or start a new project! Fabric is available. Come when you can, bring a friend if you can, stay as long as you can, bring a packed lunch or buy a sandwich at the Co-op across the road. Tea and coffee available all day, donations towards their cost welcomed. Let us know whether you wish to come for the morning, afternoon or the full day so that we have an idea of numbers for refreshments and resources.

Special Create & Share Birthday Workshop

Thursday 15 October 9.30–15.30

This special workshop will be on screen printing, led by Mary McIntosh. Create several pieces of original cloth using two different screen printing techniques. Screens and dye pastes can be provided @ £4.00 per person payable to Mary. Suggested voluntary donation of £13.00 per person for the full day.

There will be a 'Bring and Share lunch': bring a salad, something savoury or sweet to share for lunch. Tea and coffee will be available throughout the day.

For more information about both events, and to book your place on the October Birthday Workshop, email janet@frenchfrogs.net or telephone Church Office:

01223 842181

For further information about Great Shelford Free Church (Baptist)

visit our website: www.shelfordfreechurch.org.uk

Church Office (Access via Ashen Green): 01223 842181

Email: administrator@shelfordfreechurch.org.uk

Office Hours: Tuesdays 9am–4pm; Wednesdays 9am–1pm; Thursdays 9am–1pm

Great Shelford Free Church (Baptist) is a Registered Charity - No: 1141345

NICHOLAS CLIFFE & CO CHARTERED ACCOUNTANTS

*Business Advisers
for
South Cambridgeshire*

**Accounts, Audit
VAT & Tax Advice.
WE WANT TO
HELP YOUR
BUSINESS GROW**

Free initial meeting
and business
"health check".
Realistic fees.

Mill House, Mill Court,
Great Shelford
Tel: 01223 471576

www.nicholas-cliffe.co.uk

FROM OUR QUALITY
TRADITIONAL TOYS
TO MODERN OUTDOOR
PLAY EQUIPMENT,
YOU'LL ALWAYS FIND
SOMETHING UNIQUE
AT ROCKING HORSE.

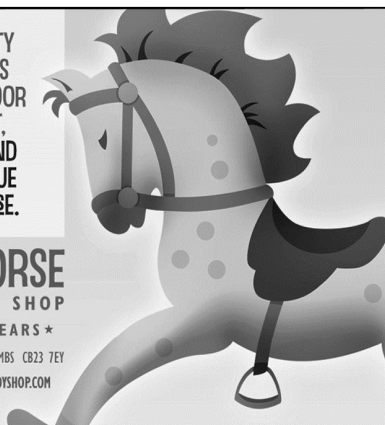
ROCKING HORSE THE COUNTRY TOY SHOP

CELEBRATING 25 YEARS

BURWASH MANOR NEW ROAD BARTON CAMBS CB23 7EY

01223 264674 WWW.ROCKINGHORSETOYSHOP.COM

MON to SAT : 9.30-5 SUN : 11-5



SIMON SPARROW CARPENTER AND JOINER



22 Woollards Lane, Great Shelford
Cambridge CB2 5LZ

Telephone (01223) 842380

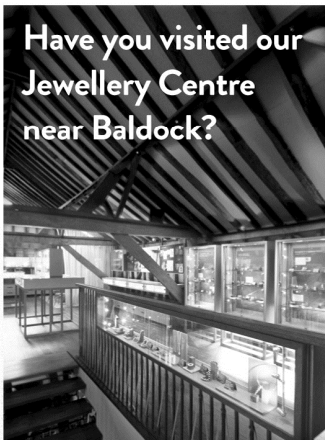
HEATWAVE SERVICES

**Servicing, installation, and repair of all
domestic heating systems**

CORGI and OFTEC registered

Tel: 01223 837774 Mobile: 07795 304013

**Have you visited our
Jewellery Centre
near Baldock?**



**HK HARRIET KELSALL
BESPOKE JEWELLERY**

JEWELLERY SHOP WITH GIFTS
FROM £5

ENGAGEMENT, WEDDING &
ETERNITY RINGS

RELAX AND WATCH THE
GOLDSMITHS

COFFEE SHOP SERVING
HOMEMADE FOOD

KIDS' JEWELLERY PARTIES &
EVENTS

Open: Mon-Fri: 10-6, Sat: 9.45-4

Fairclough Hall Farm, Halls Green,
Herts SG4 7DP

www.hkjewellery.co.uk
01462 790565

JASON KIRBY

*Professional Painting
& Decorating Ltd*

Tel/Fax:

01954 211775

Mobile: 07966 174431

jasonkirbyltd@gmail.com



A Professional Service from Start to Finish



The art of the playscape has been brought to the mainstream recently with various articles and exhibitions, such as the RIBA's *The Brutalist Playground*. With its tagline 'Part sculpture, part architectural installation, all play', this exhibition was designed to celebrate original concepts for play and help us question what we think play spaces *ought* to look like. If hard concrete brutalism isn't your thing, then head to www.play-scapes.com. Scroll down this blog and you will be left giddy and inspired by the wonderful play spaces from all around the world (and yes Erect Architecture features!).

I didn't make it to the brutalist exhibition, but under the guise of 'research' I did join my sons on a couple of new inset trampolines at Coleridge Park. One thought occurred (actually, two thoughts, the first one being that jumping for more than a minute is tiring!). Number two, I really enjoyed playing with them rather than standing at the side waiting for them to finish. I may not make time to go to the gym, but I do have time to clamber up a big climbing frame and play bounce-tag with my kids whilst I'm there – crucially the equipment made it feel appropriate for me to join in. Wouldn't it be great if more ambiguity in play spaces not only encouraged greater play interpretations, but also a wider range of users?

Anyway, enough about play, now to some hard work. Fundraising. Our homework this month was to put our fundraising hats on and research different fundraising avenues. Fortunately, a few other volunteers have joined our ranks with enthusiasm and we've enlisted help and advice from a couple of professional fundraisers in the village, so we are putting together a solid fundraising plan. If you have any great ideas then we'd love to hear from you.

And finally, a real encouragement came out of the blue when our totaliser jumped up dramatically: a very generous private donation of £2,500 (+ gift aid) was made via our website by a local resident. Your support, whether through our 'Donate' button, completing our online questionnaire, following us on social media or attending fundraising and engagement events, is crucial – so a big thank you to everyone who's supported us so far.

Eleanor McCrone

info@shelfordplayscape.org www.shelfordplayscape.org

There's still time to register your views about the rec!

Go to our website and click on the green 'fill in our questionnaire' button or go to <https://www.surveymonkey.com/s/playscapesurveyv1>

SHELFORD MEDICAL PRACTICE

www.shelfordmedicalpractice.nhs.uk

The Health Centre will be closed on Bank Holiday Monday 31 August.

Free Meningitis MenACWY vaccination for all 17 and 18 year olds

If you were born between 1 September 1996 and 31 August 1997 you should have a free vaccination. This vaccine protects against meningitis (inflammation of the brain) and septicaemia (blood poisoning) caused by meningococcal groups A, C, W and Y. The vaccination is being offered to people in this age group in response to a rapidly growing increase in cases of a highly aggressive strain of meningococcal disease group W. Please make an appointment to receive the vaccination.

Free Meningitis MenACWY vaccination for all people going to university

If you are aged 19 to 25 and starting university this year, please make an appointment as soon as possible before leaving for university. You are more at risk of meningitis and septicaemia in the first weeks of university when you mix with lots of new people, some of whom may unknowingly carry the meningococcal bacteria, which is usually spread through prolonged close contact.

Jennet Ashton, Practice Manager

VOLUNTEERS NEEDED IN GREAT SHELFORD

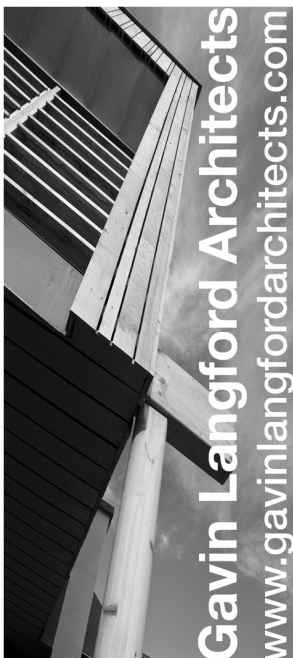
Care Network is seeking people interested in volunteering opportunities:



- **Help at Home volunteers:** offering short term practical and emotional support at home for people during a difficult time such as an illness or following a hospital stay. Volunteers do small tasks like shopping, collecting prescriptions and calling in for a chat to check someone is OK.
- **Community Navigator volunteers:** providing information for older people about enjoyable activities or useful services in order to help them stay connected with their community.
- **Local Group volunteers:** maybe you are interested in setting up a group or activity to support older or vulnerable people?

We believe it's important that volunteering is flexible and can fit around your other commitments. You give as much or as little time as you would like.

Check our website on www.care-network.org.uk, call us on 01954 211919 or email volunteering@care-network.org.uk for more information. Training is provided and out of pocket expenses paid.



The *Great Shelford Village News* is unable to check or verify the warranties or representation made by their advertisers and must therefore exclude liability whatsoever arising from any advertisement in the *News* magazine, nor do any statements necessarily accord with the views of the editors.

*Great Shelford
Solicitors*



DAVIES

solicitors advocates & mediators

- Family
- Divorce & Separation
- Children
- Civil Disputes
- Wills & Probate
- Estate & Tax Planning
- Powers of Attorney
- Court of Protection

For a quality and attentive service

Please Call: **01223 842211**

www.daviessolicitors.co.uk law@daviessolicitors.co.uk

30 Woollards Lane, Great Shelford, Cambridge CB22 5LZ

Free and easy parking

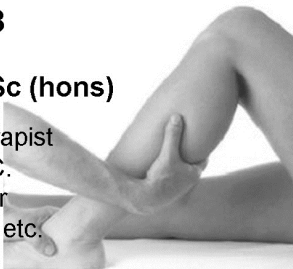
Shelford Physiotherapy

Are you in pain?

Call **01223 844 488**

Stephanie Hatter BSc (hons)

A Chartered Physiotherapist
registered with the HPC.
Recognised provider for
BUPA, AXA PPP, Aviva etc.



Great Shelford Country Market

Home bakes
Preserves

Garden produce
Plants, Crafts
Coffee & Tea

MEMORIAL HALL

**Every Wednesday
8.30-11.30 am**

READER'S LETTER: CYCLE ROUTE

I am disappointed to read that the cycle route between Stapleford and Sawston has been declared safe, and that there is no funding allocated to improve the route. I wonder if Mike Davies, the County Council cycling officer, has cycled the route to ascertain for himself whether it is safe. I use this route on a daily basis and it is not wide enough to comfortably accommodate cyclists coming in both directions; the surface is raised and cracked in places, there are overgrown bushes, it is prone to flooding and has blind corners. In the winter it is treacherous and poorly lit. I consider myself to be a safe and courteous cyclist, and I am sure the majority of cyclists are. However, I witness on a daily basis cyclists who show no consideration for others, speeding around blind corners and not slowing down to allow cyclists to pass by safely.

When you come out of the path just before Dernford Farm the pavement is limited and there are kerbs to negotiate, both at the farm and quarry entrance. This part of the route often has overgrown verges and whilst the traffic lights are an improvement, some cyclists risk having an accident by crossing when they should be waiting.

I was very pleased to read the SVC student was making a good recovery following her accident on the cycle path. I saw her being escorted to the ambulance and she looked badly injured. I fear this will be a regular occurrence now that the decision has been made to withdraw the free bus to SVC. My daughters used the free bus when they were at SVC as I did not feel comfortable with them walking or cycling from Great Shelford, particularly during the winter months, and the No7 bus was frequently late or did not arrive at all. The withdrawal of the bus is a terrible decision and when we are being encouraged to get fitter and use cars less the council need to review the infrastructure to ensure that cyclists and pedestrians have routes that are fit for purpose.

Kim Clark

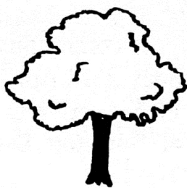
CREATIVE WRITING COURSE

Are you a budding writer? Poet? Blogger? Want to improve your technique or start from scratch? Join a ten-week programme of classes which will develop your skills in a range of forms including fiction, non-fiction and performance writing.

Classes will be held at Great Shelford Library on Thursdays from 7pm to 8.30pm. The first term starts on September 17 and ends on December 3 (excluding 29 October and 5 November). The programme costs £79 per term. To reserve your place, please call Sara Shaw on 07904 297346 or email creativewriting@virginmedia.com.

Sara Shaw

Care For Trees



**Qualified
Reliable
Insured
Affordable**

*For a free quote call
Mike Wallman on
01440 820323*



BARKER BROS

FAMILY BUTCHERS

Purveyors of *quality meats* including our
award-winning home cured bacon, home cured ham
and *local farm assured* pork, beef & lamb.

We also stock a wide range of deli produce, traditional
English & Continental cheeses, fresh fish & game.

Have you tried our new **HOMEMADE SHELFORD PIES?**
Available in a variety of sizes & fillings, we think they're yummy!

43 High Street, Great Shelford, Cambridge CB22 5EH Tel: 01223 843292
www.barkerbrosbutchers.co.uk

J M R Electrical



**Electrical
Contractor**



**All Domestic, Industrial &
Commercial work undertaken**

21 Ashen Green, Great Shelford, Cambridge
Email: jmr.electrical@hotmail.com
Tel: (01223) 844680 Mobile: 07766 68 38 86

SAWSTON PLUMBING SERVICES

TEL 01223 836268

Gas safe registered

For all your plumbing requirements

- Boiler servicing
- Heating installations and breakdowns
- Bathroom installations
- No job too small

FREE QUOTATIONS

QUALITY BESPOKE PICTURE FRAMERS

**SIMON ROBINSON
& SON**

Professional, Friendly Service
Over 25 years experience

Wide Selection of Frames
Conservation Materials Used
UV Protective Invisible Glass

Artwork/Photography
Needlework/Tapestry
Oil Paintings and
Canvases Stretched
Unusual Objects Framed
Made to Measure Mirrors
Limited Edition Prints Available

Tel. 01223 873123

Opening Hours:
Tues-Fri. - 9am-5.30pm
(Saturday - By Appointment)

www.robinsonframes.co.uk
lester@robinsonframes.co.uk

**STUDIO 6, PENN FARM,
HARSTON RD,
HASLINGFIELD, CAMBRIDGE.
CB23 1JZ
(AMPLE PARKING)**

DIARY, September 2015

Date	Event	Time	Place
3	WI Meeting (page 31)	7.15pm	All Saints Church Rm, Lt. Shelford
3	Brief consultation meeting on traffic changes (page 6)	7–7.30pm	Pavilion on Rec.
4–6	Little Shelford: Heroes and Villains weekend (page 31)		
6	VJ Day Commemoration (page 23)	7.30pm	High Green War Memorial
8	Village meeting on proposed traffic changes (page 6)	7.30pm	Memorial Hall
12	Shelford Garden Club Show (page 42)	2pm	Memorial Hall
13	Shelford Fun Run (page 23)	11am	Gt. Shelford Rec.
17	Cemetery Work Party (page 3)	10am	Cambridge Rd Cemetery
23	Engage: Camb. History on your computer (page 12)	2–3.30pm	Library
26	Twinning cake sale (page 27)	9.30–12noon	Boots Forecourt
26	Farmers Market	9am–12noon	Memorial Hall

The Country Market is held in the Memorial Hall each Wednesday
8.30–11.30am.

BIN COLLECTIONS

Black bins: 7 September, 21 September

Green and blue bins: 1 September (Tuesday), 14 September, 28 September

Old batteries: recycle by placing in a plastic bag tied to the blue bin

The next issue of the *Great Shelford Village News* should be available in the shops on Friday September 25 and subscribed copies delivered shortly after.

SHELFORD FUN RUN



The 2015 Shelford Fun Run will take place on **Sunday 13 September**. There will be a warm-up session at 10.40am at the rec. and the race will begin at 11am.

The course runs through the streets of Shelford and, with the roads closed for the duration of the event, it is a rare opportunity to really enjoy the sights and sounds of a beautiful English village. This year's course has been accurately measured and certified to be 5k. For non-serious runners the event is perfect. You can walk or jog at your own pace and savour the atmosphere. For serious runners it's a great chance to register a Personal Best – the course is very flat and fast. Whatever your reason for running, you will enjoy a great day out and support worthy local charities. The main charity we are supporting this year is the Arthur Rank Hospice Charity.

You can register at <http://www.shelfordfunrun.co.uk/index.php/register>. If you have any questions about the event or sponsorship opportunities or would like to help with organisation, please email info@shelfordfunrun.co.uk. JS

VJ DAY COMMEMORATION

A. Candle-lit Service
will be held

on Sunday 6 September at 7.30 pm
at the Memorial in High Green

The Chair of South Cambridgeshire District Council
Cllr Sue Ellington will be attending

Light refreshments to be served in the Plough

SEWING GROUP

A sewing group will be starting on Monday September 14. The group will meet in the St Mary's Church Community Room by the school, possibly in the mornings (when the light is best), or alternatively in the afternoon, according to demand. It is suitable for all levels of experience. Bring your UFO's (unfinished objects), or knitting. Start something new, make a garment or get help with something. Experts welcome. A small charge will be made for using the room depending on numbers. Please contact me on 846332 for details.

Jenny Morris

Beach holidays, City breaks, Honeymoons, Weddings abroad, Adventure holidays, Ski, Cruise, Tailormade trips, Flight only, Car hire, Airport hotels and parking and much more...

CHERYL HARRADINE

Travel Counsellor

01223 842670

cheryl.harradine@travelcounsellors.com

www.travelcounsellors.co.uk/cheryl.harradine



Travel Counsellors ensures complete financial protection on every booking

travel counsellors



RAINBOW PRE-SCHOOL

Rainbow Room, Great and Little Shelford Primary School
For children from the term of their third birthday

A pre-school where they learn through play

9 to 12.00 and 12.30 to 3pm
Recent OFSTED reports available

For more information, or to arrange a visit call Allison Tomlin

07985 216603

Lynn Driscoll

DipCFHP MPSPract

Foot Health Practitioner

Member of the Accredited Register of Foot Health Practitioners

- Long nails trimmed
- Thick nails reduced
- Corns & Verruca treated
- Hard skin/callus reduced
- Fungal Infections
- Dry and cracked heels
- Diabetics cared for

Mobile service providing foot care in the comfort of your home

Tel: 07771 735300

WATERLILIES

Beauty. IPL. Relaxation

IPL Laser for Hair removal

Pigmentation & Skin Rejuvenation

Call 01223 844700

www,.waterlillies.org.uk



**CAMBRIDGE
ELECTRICAL**
services ltd



Registered through:
NICEIC

Domestic, Commercial, Industrial & Agricultural

For all you electrical installation, Inspection & Testing and repairs, contact us for a free no obligation quotation.

Call; 01223 430 430

Email; Enquiries@cambridge-electrical.co.uk

Website; www.cambridge-electrical.co.uk

Celebrating over 25 years in business.

Willow Tree

All aspects of painting, decorating & home improvements

- Exterior & Interior painting & decorating
- All gardening needs
- All styles of fencing etc..

Contact Dean on

01763 232757

07906 531518

FOOTBALL CLUB

It hardly seems five minutes since last season ended but here we are with the new one well under way. After a Kershaw Premier league and cup double last term the first team have started with a successful defence of the prestigious Terry Wilson Memorial Trophy, the third in a row and 22nd in total. Unfortunately the first league game didn't go so well, with the team going down 2-0 away to Foxton. Nick Baggaley has stepped down after three very successful seasons as manager and has been replaced by his assistant, Ben Farmer, supported by club captain Ricky Woodrow.

The reserve team, newly promoted to Division 1A of the Newmarket Motor Company League after several seasons in the doldrums, start their campaign in September with manager Peter Townsend still at the helm. Likewise, the ladies team do not start their Eastern Region Women's Premier Division campaign until late August, but have already had a friendly against Tottenham Hotspur Ladies, going down narrowly 3-2. Manager Matt Payne was pleased with the performance of his team and thought they were a little unlucky against a strong Spurs team. After a 100% win record last season the men's veterans team, with manager Terry Gore again at the helm, will be hoping to repeat that feat when their Cambs FA Veteran's League Division 1 campaign gets underway.

There will be regular games down the recreation ground, with the first and reserve teams playing on a Saturday and the ladies and vets on a Sunday, so why not come along and support your local teams.

Terry Rider

HOW TO CONTACT GREAT SHELFORD VILLAGE NEWS

We are pleased to receive articles, letters and notices for community events for consideration. Please send by email (preferably as a Word document), or deliver paper items to Mrs Amis. The copy date is usually the second Friday of the month. See the *Next Issue* box for next month's date.

Contact Information

General enquiries and articles for publication: gsvneditorial@yahoo.co.uk

Non-email contributions to Mrs J Amis, 58 High Street, Great Shelford

Commercial advertising enquiries: gsvnadverts@yahoo.co.uk

Subscriptions: 01223 842993

General enquiries 01223 571895 or 01223 842553.

Editorial Committee

David Fuller, Bridget Hodge, Judith Wilson, Lorraine Coulson.

The Gardener's Garden Centre
Cambridge Road, Great Shelford
Tel: 01223 842777
enquiries@scotsdales.com
www.scotsdales.com

Opening times:
Monday - Saturday 9am - 6pm
Sunday 10.30am - 4.30pm
Late night Thursday until 8pm

Scotsdales®
YOUR GARDEN CENTRE



FIRST CALL PEST CONTROL

Rob Cowling
NPTA registered

**Wasps, mice, rats,
moles, insects,
etc.**

Discreet service

Mob: 07951 047688
01223 630526

Layer Travel

Tailored Travel Solutions

Janice@layertravel.co.uk
01223 841376

Tailor-made holidays
Brochured holidays
Accommodation

City Breaks

Cruises

Touring



Skiing



Flights

DAVID FOX CARPENTRY

***Purpose-made
joinery and fitted
furniture***

Unit 4 Granta Terrace
Stapleford
Cambridge

01223 845143

GOG MAGOG MOWER SERVICES

Repair, Service and Sales of all Garden
Machinery including Strimmers and Chainsaws
Free Collection and Delivery Service available

01223 832 894 / 0776 955 8279

www.gogmagogmowers.co.uk

SHELFORD DELICATESSEN

ONE OF THE INDEPENDENT'S 50 BEST
DELICATESSENS IN UK

THE INDEPENDENT'S FOOD & DRINK - FEB 2011

HOMEMADE ICE CREAM, ARTISAN
BREAD, DELI KITCHEN, FRESH DISHES,
CHEESE, ANTIPASTI, SPECIALITY
MEATS, SEASONAL VEGETABLES,
EVENT CATERING

WWW.SHELFORDDELI.CO.UK

8A WOOLLARDS LANE, GREAT SHELFORD, CB22 5LZ
01223 846129

RUGBY CLUB

Youth Registration day is 6 September from 10am to noon on the Davey Field directly opposite Scotsdales Garden Centre in Great Shelford. We take children from under 7 to Colts (18 years). Training will take place every Sunday this September so it is a great time to come and have a go. If you enjoy the game then you can join as members. The season runs from the first Sunday in September through to the last Sunday in April. There will be home games, away games and tournaments. For the older children there is also mid-week training and some of the older teams have the opportunity to go on tour.



Our 1st team plays in National League 3 – London and South East. Training is every Tuesday and Thursday at 7pm – new players welcome. The first home game of the season is **Shelford v Bracknell** on Saturday 12 September at 3pm. We also have a very successful ladies team and 2nd, 3rd, 4th and 5th men's teams. If you are interested in playing, please look at our website for contact details.

The **2015 Rugby World Cup** is to be hosted by England from 18 September to 31 October. Shelford Rugby Club welcomes anyone to come along to the club for the home nation matches. See www.rugbyworldcup.com for dates and times.

We are also bringing rugby into the village – on Saturday 3 October the England V Australia match will be shown in the Memorial Hall, Great Shelford free of charge. Anyone is welcome to join us.

For more details on the events and the club in general please look at the website www.shelfordrugby.co.uk.

Stephanie Hatter, Youth Secretary

Shelford Twinning Association

Annual Cake & Bake Sale

Saturday 26 September

9.30am–12 noon

Outside Boots Chemists, Woollards Lane, Great Shelford

Homemade baked goods for sale

JO ALEXANDER

STYLISH TEAK AND WICKER
GARDEN FURNITURE

Call to visit our **Showbarn** at
Knapwell Wood Farm, High Street,
Knapwell, Cambridgeshire CB23 4NS,
or **buy online**

01954 267857

www.joalexander.co.uk

Chiropodist

David Levy MSSCh MBChh

Home visiting practice

Saturday morning clinic
held at
Billson Opticians, Sawston

Established since 1993

Mobile: 07966 136972

Home : 01223 834634

NICK WEBB

CABINETMAKER

FINE FURNITURE, CUSTOM
DESIGNED & HAND MADE
EXCLUSIVELY FOR YOU.

01223 701914

WWW.NICKWEBB.BIZ



Computer Services

For the home or small office

Software/hardware problems & upgrades

Virus & Spyware removal

Network/wireless/broadband setup

Computer speed-up & service

No-fix-no-fee, free consultations
Maximum fee £75 Alan Briggs 833574



Square & Compasses

Home cooked food including Sunday Lunch

Outside Seating Area Car Parking

Tel: 01223 843273

The Plough

Open every day 11am to 3pm, 5pm to late

Sky Sports

Great Beers

Tel: 01223 847986



CRICKET CLUB

First Team

The Firsts have had a superb season, challenging for the Senior One League title from the first few games. The crucial weekend was in mid-August when we played Granta Seconds twice, first on Saturday in the League and then on the Sunday in the Cambs Invitation Cup Final. The results were almost identical. We were beaten by 6 wickets and then by 5 wickets against a very strong, young Granta team. Despite these disappointments, it has been an excellent season for the Firsts who have had some brilliant results. Aaron Clarke, our Aussie, has been the outstanding player with bat, ball and in the field.

Seconds

As I write, our Seconds are top of Junior Six South by a fraction from Weston Colville Seconds whom we meet twice in the last three fixtures. So it will all come down to those two games. Skipper Danny Nicholls has led the way with scores of 200 not out (a club record) and then a hundred in successive games. Scott Hawkins was denied his maiden century against Cherry Hinton when his attempt at a six off the last ball of the innings fell two feet short and he ended on 98 not out!

Midweek League

Shelfords finished third from bottom in Division 2 of this T 20 competition.

Youths

Although not many games were won by our Under 12s and Under 11s, we fulfilled all our fixtures, played in a sporting manner and all our children improved their cricketing skills. I would like to thank our coaches Steve Johnson, James Shelford and Mark Milne for all their selfless work.

Brian Higgins

GREAT SHELFORD BOWLING CLUB

is holding a fund-raising

TABLE TOP SALE

At Great Shelford Memorial Hall

On Saturday 10 October all morning from 9.00am.

Come in and grab a bargain

Refreshments bacon rolls raffle tombola cake stall

Entry 20p

Sellers can book a table (£8) on 01223 473520 or 845310

Friendly, Professional Beauty & Tanning Salon

Waxing • Threading • Facials
Lash Extensions • Jessica
Gelation, UV Tanning & More

Gift Shop

Jewellery • Scarves
Home Décor • Personal Gifts
Greetings Cards • Gift Wrap

Open: Mon, Wed & Thu 10 - 7
Tue & Fri 10 - 6
Sat 10 - 2

Body Image 01223 880 881

10A High Street, Fulbourn,
Cambridge CB21 5DH



Mrs Rosemary Rigge

Grad Dip Phys MCSP Reg.HPC

Chartered Physiotherapist

Tel: 01223 844091

Mobile: 07958 708728

TREATMENT ROOMS:

26 Mingle Lane, Stapleford

or HOME VISITS Reg BUPA/PPP, etc

SOLUTIONS

Gents Hair Salon - Ladies' Hair Salon above
(air-conditioned)

44 Woollards Lane, Great Shelford CB22 5LZ

Closed all day Wednesday & Sunday

☎ 01223 843844

GIUSEPPE PIRAN

SPECIALIST PAINTERS & DECORATORS
FOR PERIOD, RESIDENTIAL & COMMERCIAL PROPERTIES



0845 050 9277 www.gpiran.co.uk

DACRE LONG

Local Painter & Decorator

Professional work to highest
standard for over 15 years

Trade & Private Customers

Free quotes with written
specification

Discounts for Senior Citizens

☎ 893176

☎ 07837 513837

66 Chalklands, Linton

TIM PHILLIPS & Co Ltd

Accountants

Independent, specialist service for:

> SMALL BUSINESS – SELF ASSESSMENT – PERSONAL TAXATION <

Cart House 2, Copley Hill Business Park

Off A1307 between Wandlebury and Babraham

Tel: **01223 830044**; Email: **Info@TPaccounts.co.uk**

www.TPaccounts.co.uk

Easy, free parking right outside the door

LITTLE SHELFORD HEROES & VILLAINS WEEKEND**4–6 September on the Wale Recreation Ground****Heroes & Villains Dinner and Dance: Friday 7.30pm**

Over 18s only, tickets £30 from Liz Carrothers on 956747 or
lizcarrothers@icloud.com

Heroes & Villains Fun Afternoon: Saturday 1pm to 5pm

(Free entry)

Heroes & Villains Literary Evening: Saturday 7.30pm

Tickets on the door or pre-book and more information from
Joan Church on robinchurch@btinternet.com)

All Saints Harvest Celebration: Sunday 11am

(Everyone welcome – bring gifts for Jimmy's Night Shelter)

Music Picnic Finale: Sunday 1pm

(Free Entry)

Produced by Little Shelford Village Entertainments Committee

More information: Gail Pilkington on Cambridge 840581 (gailpi@mac.com)

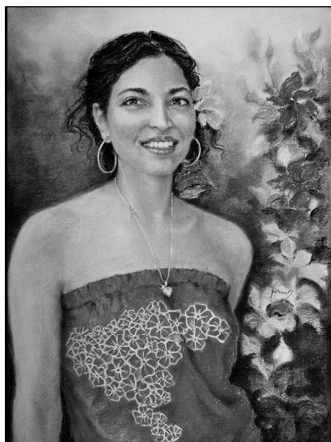
WE ARE FUND RAISING FOR OUR VILLAGE**The Shelfords WI meeting****CLOTHES FROM ANOTHER ERA**

All Saints Church Room, Little Shelford, Thursday 3
September, at 7.15pm



To mark the 100th anniversary of the founding of the Women's Institute, The Shelfords WI have invited Izabela Pitcher of Prior Attire to talk about women's fashions circa 1915. There will be a demonstration, with authentic and reproduction articles – lingerie, corsets, dresses, and hats – for ladies to try on.

Non-members are very welcome to attend. The cost is £4 including light refreshments. If you are interested please contact our Secretary, Vanda Butler, 01223 561053,



PORTRAITS

Paintings & Drawings

www.perveenart.com
camopenstudios.co.uk

Perveen Tayabali

01223 846330
perveentayabali@gmail.com

Cambridge Child Therapy

Individual therapy for children and young people up to 18 years of age and experiencing difficulties with

Anxiety – Bullying – Divorce
 ADHD – Depression – Stress
 Trauma – Low Self Esteem
 Bereavement or Loss, etc

Based in Duxford

Clair Lewoski, UKCP, HCPC
 & MA (Cantab),

Tel: 07789916777

clair@cambridgechildtherapy.com
www.cambridgechildtherapy.com

Day Dec

Painting & Decorating



Free estimates

7 Stulpfield Road
 Granchester, Cambridge
 Cambs CB3 9NL

Tel: 077 8087 5044



*Swimming, badminton,
 squash, football,
 zumba, aqua fit,
 boot camp, yoga,
 pilates, revolutions*

FITNESS SUITE:

*inductions,
 fitness assessments,
 personal training*

BIRTHDAY PARTIES

*Pool, fun zone,
 bouncy castle,
 water zorbing, archery,
 hula hooping,
 trampolining,
 sporting options etc*

*For more information
 please phone*

01223 712555

or email

mwilson@sawstonvc.org

or visit

www.sawstonsports.com

ANGLIA TREE CARE



A O'Connor

Tel: 01223 424454

**23 King Street
 Cambridge CB1 1LH**

www.angliatreecare.co.uk Email: info@angliatreecare.co.uk

*Tree surgery
 Stump-grinding
 Hedge maintenance
 Fully qualified & insured*

*All work carried out to British
 Standard BS3998)*

*Member of the guild of
 master craftsmen*



RIDING FOR THE DISABLED ASSOCIATION ICENI GROUP, SOUTH CAMBS EQUESTRIAN CENTRE, BARRINGTON



Can you spare the time to help us out? We urgently need some more helpers for our Tuesday morning (term time only) sessions, which run from 9.45 am to 12 noon.

It is not essential to be 'horsey'. This is very rewarding – even if the progress is slow – the children love it! The group works with primary school age children with a variety of disabilities.

Please contact Diana Allen on
01638 572044

BARTON DRAMA GROUP

We are holding open auditions at the Village Hall, Barton for *Dancing at Lughnasa* by Brian Friel either on Sunday 6 September from 2–4 pm or Thursday 10 September from 8–10pm.

The play is a joyous evocation of the lives of five sisters living in rural Ireland in the 1930s. There are wonderful parts for five women (ages 20s, 30s, 40s) and three men (20s, 30s, 50s). The production runs from 24–28 November and rehearsals start on 21 September, on Mondays and Thursdays. Please look at our website www.bartondramagroup.co.uk for full details and a form to complete, to let us know which audition session you would like to attend.

We are a friendly group, putting on two productions a year, playing to full houses. We always welcome new members, both on stage and for all aspects of back stage work.

Val Watson



Cambridge
Veterinary Group

"Quality care for all your veterinary needs for small animals and exotic species."

89a Cherry Hinton Road
Cambridge, CB1 7BS.
01223 249331

www.cambridgevetgroup.co.uk
info@cambridgevetgroup.co.uk

Gleamers Francis Butler T/A Gleamers Ovencleaning
THE PROFESSIONAL DOMESTIC OVEN CLEANING SERVICE



Outstanding quality cleaning for all your cooking appliances at competitive rates

Safe, eco-friendly, asthma friendly, Non Cautious Cleaning Solution

No fumes, No mess, No bother – just amazing results every time

CALL NOW ON: 01440 761515
WWW.GLEAMERSOVENCLEANING.CO.UK
12 WRATTING RD, HAVERHILL, SUFFOLK CB9 0DD

Your local professional and conscientious oven cleaner

A C Electrics
Your Local Electrician
Always on time!
Lighting & Power
Testing & Inspection
Call Outs
No Job Too Small
Call us now:
01223 894848
www.acelectrics.co.uk

Thomas J Shearing
Furniture Restoration and Traditional Upholstery
Comprehensive Re-upholstery service
Curtain Making and hanging service
Vast range of Furnishing Fabrics
Antique and Modern Furniture Restored
Picture Framers and Restorers
French Polishing and other finishes available
Bespoke Mirrors made to order
The Hall, 4 Chapel Street, Duxford
Tel 01223 837150 email: shearing@onetel.net

Panther spotted in your village!
It just got cheaper



01223 715 715
We're up your street
www.panthertaxis.co.uk

Panther territory just got bigger and now includes your village! Cambridge's largest and best loved taxi company has launched a brand new, reduced rate village taxi service. Introducing fares that are fair in your village. All journeys on the meter* means no fixed prices. You just pay for your journey door to door – and not a penny more.

*All fares for saloon car bookings on meter within or between villages listed. Prices for 5-8 seaters available on request. See www.panthertaxis.co.uk for details

MILTON • HISTON • IMPINGTON • GIRTON • MADINGLEY • COTON • BARTON • GRANTCHESTER
TRUMPINGTON • THE SHELFORDS • STAPLEFORD • CHERRY HINTON • FULBOURN
TEVERSHAM • STOW CUM QUAY • FEN DITTON • HORNINGSSEA

CHIMNEY SWEEP

J. L. WIGHT
Guild of Master Chimney Sweeps
Fully Insured.



Advice given / problems solved.

Certificates issued.
01954 253315
www.camsweep.co.uk
26 Cow Lane, Rampton

BOOK REVIEW***THE PRIME OF MISS JEAN BRODIE* BY MURIEL SPARK**

September means back to school, so what better way to start the school year than to read Muriel Spark's *The Prime of Miss Jean Brodie* (1961), which will have you smirking all the way to the end of term.

The story is about Miss Jean Brodie, an unconventional teacher, and her 'set': six impressionable ten year olds. It is situated during the nineteen thirties in an Edinburgh all-girls school named Marcia Blaine, where Miss Brodie educates her girls, preparing them for when they reach their 'prime'. The teaching is not reading and arithmetic, although the girls have these books open on their desks in case of a snooping headmistress, but it's about Miss Brodie's previous lovers, Italian art and Fascism.

Spark's choppy narrative borders on perfection. She moves from past to present and back again within a paragraph and the reader never feels lost. With ease she delivers the most heart-breaking of revelations without sentimentality. From a long list of successes in this text, the unforgettable Miss Brodie is the greatest, a fascinating character full of pride, knowledge, morals and contradictions. She is so unique that when reading you think you know someone a bit like her, but not exactly. An accomplishment of a well written character is the 'Would I like to meet them?' test, and the answer is a firm yes. Another triumph is Spark's command over the narrative: shifting it, pushing it, slowing it down, throwing in a shock and slipping in humorous lines. A lovely companion piece would be Alan Bennett's play *The History Boys* (2004) or for a real juxtaposition *The Sopranos* (1998) by Alan Warner.

I smiled, sniggered and marvelled at this book. It is a joy from start to finish, and Miss Jean Brodie will stay with you, just like she does with the Brodie set, forever.

Garry Pope

D & N Chimney Services Ltd

Fireplace and Chimney Specialists

- Chimney sweeping
- Fireplace and stove installations
- Chimney lining and relining
- Smoke pressure testing • CCTV surveys
- Bird guards and cowl
- Chimney repointing

Carbon monoxide/chimney fires

Clean chimneys are safe chimneys
Get it swept by professionals

Telephone/fax 01223 841562

Maths and English Tuition

**Step Up
Learning
at Sawston VC**

Tel 480046 for
free assessment
www.stepuplearning.co.uk



NEAVES ELECTRICAL

A family business with over
50 year's commercial and
domestic experience

NICEIC and Part P qualified
and insured

Tel: 01223 290956

Mobile: 07702 280687

www.neaveselectrical.co.uk

BDH TOOL SHOP

For all your DIY needs, power tools and
hand tools, safety equipment, gardening
items, drills and taps, nuts and bolts and
many more items.

The tool shop is open Monday to Friday
8am to 5.30pm; Saturday 9am to 1pm
www.bdhtools.co.uk

Unit 3, 9 Granta Terrace, Stapleford CB22 5FJ
Telephone: 01223 845088

sawstoncarpetandflooringltd

CONTRACT FLOORING

KARDEAN

CARPETS

VINYL

VERTICAL BLINDS

SAFETY FLOORING

AMTICO

LAMINATE

LINO

VENETIAN BLINDS

PARQUET FLOORING

Mon - Sat 9.00am to 5.00pm Thurs 10.00am to 7.00pm

Unit 3A, Sawston Park, London Road

Pampisford, Cambridge, CB22 3EE

t 01223 837005

www.sawstoncarpetsandflooring.com

email sawstoncarpetsandflooring@gmail.com

Ignition Driving Tuition

Getting you started!

Vicky Rayment

Tel: 07857610562

52 Balsham Road, Linton

www.ignitiondrivingtuition.co.uk

AUGUST

August in Shelford is a special time. The schools have broken up, and many have departed, heading for the coast, or abroad, for a couple of weeks of somewhere else. And suddenly the pace of life in the village is quite different. The morning rush of people going to work diminishes, the roads are fuller of bikes than cars, and those cyclists have shed their high-vis jackets and leggings and come out in shorts, skirts, singlets, bright and summery.

Later in the morning, and in the afternoon, you can step out onto the High Street, and it's so quiet, it's eerie. Momentarily, you imagine yourself transported onto the streets in the *Day of the Triffids*. No pedestrians, no cars, just a quiet street, bathed in sunlight, with sunbaked grass and a few butterflies flittering past.

One morning you come out, and you can tell from the silence that the swifts have gone, departed for Africa. They arrived in May, and for the last three months, from their base in Woollards Lane, they've dominated our skies, rushing round in frantic screaming parties. They are the sound of summer, and now they've gone. It's like a tiny lurch towards Autumn.

But the skies aren't entirely empty. The martins continue to fly, their cries a gentler chittering. They, like the swifts, have had a good year. Meanwhile, over the ripe cornfields of Rectory Farm, the swallows fly low, hovering up the insects. The colours in the fields are intense under the hot August sun. The trees are at their darkest green, the ripe corn tawny.

And then one day the harvesting will begin. You'll hear the steady rumbling and grinding of the combine behind the houses. There's a smell in the air, the hot dust of harvested corn, mixed with red diesel. The tractors run endlessly backwards and forwards, Trumpington-bound, towing trailers loaded with pyramids of corn. When the harvesting is done, the newly-cut stubblefields glow an intense gold.

Shelford in August is like some private members' club. With so many people away, it feels like there's room to spread out. We stop and chat in the street, or sit at the tables in front of the Square and take in the view. People are spread out across the Rec., the play area is crowded with parents and their children.

The campsite has posted a sign: 'Campsite full, reservations only', and you meet the campers walking down into the village to see what it's like. Suddenly your normal view is turned on its head as you imagine how they see the village – a place of holiday, not of ordinary resort. Well, I hope they like it. It's not the prettiest village, or the best scenery, but I like it, and it's home.

Helen Harwood

LIBRARY TALK

CREATING DEMENTIA-FRIENDLY COMMUNITIES

James Nicol, the Development Manager for Adult Services at Cambridgeshire Library Service, will give a talk in the library on Tuesday 20 October at 7.30pm, entitled 'Creating dementia-friendly communities'. It is a general awareness raising of dementia and how people might be able to make a small contribution in their community – if they wish!

The session is interactive and is limited to 30 places. If you would like to attend, tickets are available from the library at £3 for Friends of Great Shelford Library and £5 for non-Friends.

The talk is being organised by the Friends of Great Shelford Library Committee.
Sarah Coppendale

SAWSTON MEDICAL PRACTICE

NEW WALK SCHEME

We have set up a new walk scheme which we are calling the Sawston Rovers as a nod to the old village football team. This new walk will be leaving the practice each Wednesday at 11am. There are four walks initially on a rota basis, two are approximately 1 mile in length and should take roughly 30 minutes, whilst the other two are slightly longer at between 2.3 and 2.5 miles taking approximately one hour to complete. Details of all routes are available at Reception, as is the rota for the walks.

Walkers will be given directions and a map for the walk each week. If you are thinking of joining us, please arrive 10 minutes early on your first walk as you will need to complete a quick health questionnaire and emergency contacts form. Any walkers under 16 must be accompanied by an adult.

For more information please contact Kelly Austin at k.austin1@nhs.net or via Reception.

MERGER

Following the announcement of the proposed merger between Linton Health Centre and Sawston Medical Practice, we asked our Patient Participation Group to put forward a set of questions they thought might be raised. The following are those questions together with the Practice response.

Q: Why are Sawston Medical Practice and Linton Medical Centre merging?

A: Linton and Sawston operate similarly with regard to patient care. The NHS are wanting Practices to extend the scale of their services and also extend

hours. By merging the two Practices this provides the opportunity for this in the future.

Q: Will the merger mean that I have to wait longer for an appointment?

A: Absolutely not. If anything waiting times will probably improve.

Q: Will I have to go to Linton Medical Centre for an appointment?

A: No, there will be no change in this respect.

Q: When I call for an appointment will I be able to talk to a receptionist at Sawston Medical Practice?

A: Yes. There are no plans to change the Reception Teams or telephone contact numbers.

Q: As a patient in what way will I benefit from the merger?

A: The provision of local community services is key to making this work. The merger will enable the merged Practices to provide more services to the community.

Q: Will there be any additional services available as a result of the merger?

A: Yes, the merger will enable us to provide additional services. What and when has yet to be decided.

Q: Will the opening hours change? If so, to what?

A: No plan to change these immediately, but if the opportunity arises we will extend opening hours across the two Practices.

Alison Podgorska

SAWSTON ADULT EDUCATION

www.sawstonadulted.org 01223 712424 community@sawstonvc.org

Our 2015/2016 Adult Learning programme is now available. We are pleased to continue to offer ever-popular courses such as Pilates, Friday Singers, Pottery and a range of language and cookery classes. We are also delighted to offer new courses including Art History, Tap Dance, Developing Presentation Skills and a variety of computer courses. We will host our busy Saturday Workshops on 3 October and 14 November, which will include Paediatric First Aid, Make Up for Over 40s, De-Stress and Sleep Well and Patchwork Techniques.

Our Taster Sessions will be held on Monday 7 September from 7–8pm, booking essential. Please visit our website for our full programme.

We look forward to welcoming you to one of our courses in September 2015!

Alexander Technique

in Trumpington

Improve ease and balance
Alleviate pain and stress

Polly Waterfield MSTAT
Tel. 01223 529763
polly.waterfield@ntlworld.com



The Country Store

*Pet, Equine, Smallholder,
Shooting supplies,
Country clothing,
Wild bird food*

Unit 12a, Sawston Park,
Pampisford, Cambridge
CB22 3EE

www.thecountrystore.co.uk

Tel 01223 837977



Little Hands Nursery School Newton

Little Hands Nursery School - Newton
Newton Hall, Newton, Cambridgeshire

Little Hands is a private Nursery
School specialising in quality preschool care
and education for the under fives and offers

High staff to child ratio
Outstanding Ofsted report

Sessions can be booked flexibly throughout
our nursery day 08.30am-4.30pm
during term time

Optional Holiday Clubs also available

We accept nursery funding giving
15 hours per week of free funded nursery for
all 3 and 4 year olds and eligible 2 year olds

For further details contact:
Sheila Cottle: nursery manager 01223 872796
E-mail: lh-newton@btconnect.com

Little Hands is also at Bourn, Melbourn and Newton,
visit the website at www.littlehands.co.uk

Nigel Powder Electrical



Nigel Powder

COMMERCIAL & DOMESTIC
ELECTRICAL SERVICES

Tel: 01223 845060 Mobile: 07725 044068

Email: nigelpowter@btconnect.com

www.powter-electrical.co.uk

16 Leeway Avenue, Great Shelford, Cambridge, CB22 5AU

DWD Home Improvements

*Your local carpenter and
small builder*

Carpentry, Kitchens, Roof repairs,
Fencing, Painting interior/exterior
Insurance work undertaken

No job too small
Quality service - free quotation
23 years' experience
Local references available

Telephone 01223 872558

Mobile 07855 579802

103a New Road, Haslingfield

SOLAR PHOTOVOLTAIC PANELS GROUP DISCOUNT SCHEME



Back in 2011 a group from Coton got together to form a solar PV panel bulk purchase scheme. The resulting eCoton scheme allowed 75 residents from South Cambs to install solar panels at a reduced price. Now, in 2015, a group of volunteers from the Sustainable Parish Energy Partnership are organising a second scheme, 'eCoton Solar

Savers', open to all property owners in South Cambs.

Prices of PV panels have come down significantly since the first eCoton scheme. In fact, they are now around half the price that they were in 2011! The largest domestic system is around £6,000, although eCoton Solar Savers (2015) hope to negotiate a lower price. Financial returns are partly through savings on electricity bills and partly through the Feed-in-Tariff (FIT), the government payment scheme to homeowners. This has been reduced since 2011 but the 'payback period' is still about 7 years, and panels can be expected to last for 20–25 years.

If you would like to register interest in this scheme, send an email to ecoton.solarsavers@gmail.com. When prices are arranged, you will receive details and then be invited to attend an information meeting on Wednesday 23 September in Haslingfield, where you can meet the SPEP volunteers running the scheme and the solar panel installation company. Following this, the installers will arrange for an assessor to visit your property to establish its suitability for solar panels.

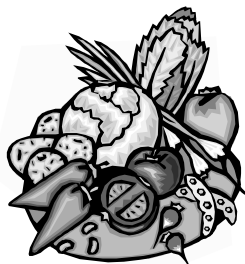
Should your property be suitable for solar panels, then it is only at this point that you would need to decide if you want to proceed. All contracts and payments will be made between you and the installer – the role of SPEP volunteers is to set a price with the installer and set up the scheme.

eCoton Solar Savers is open to anyone with a property in the South Cambridgeshire area, so if you are interested in reducing your carbon footprint and making a sound investment then register and save with solar!



**SUSTAINABLE
PARISH
ENERGY
PARTNERSHIP**

Amanda Fuller



**72nd
ANNUAL SHOW**
At the Memorial Hall and Scout Hut
Saturday 12 September at 2pm

Plant & Produce Stall · Raffle · Teas & Cakes

Admission : adults 50p, children free

Entry of exhibits free and open to all
Many classes to enter including Art and
Photography

Schedules and entry forms available from

- Shelford Library • Shelford Deli • Kash's store •
 - Wednesday morning Country market • Spar store •
 - Scotsdales GC • Shelford School • Sawston Library •
- **Entry forms to be returned on Wednesday 9 September from 12 noon–7.30pm to 10 Hinton Way or on Thursday 10 September from 10am–12 noon to Shelford Memorial Hall.**
- Please bring any plant, produce and cake donations to the Hall from 8–9pm on Friday evening or from 8–10am on Saturday morning.

<http://shelford.lucidata.com/gardenpage.htm>

WHAT'S ON IN SEPTEMBER

A round up of what's on at some of the venues near us. For more information, times, ticket prices and bookings, please contact the organisation. Please note that this information can be subject to change and events may already be fully booked.

CAMBRIDGE ARTS THEATRE

31 Aug–5	<i>Avenue Q</i> American musical
15–26	<i>The Father</i> With Kenneth Cranham and Claire Skinner
28–Oct 3	<i>Flare Path</i> Celebrating VJ Day: romance by Terence Rattigan
Telephone: 01223 503333 Web: www.cambridgeartstheatre.com	

SAWSTON CINEMA

17	6.30pm	<i>Testament of Youth</i> (Based on Vera Brittain's WW1 Memoir)
18	7.30pm	<i>The Battle of Britain at 75</i> (Live cinema experience from Biggin Hill with archive footage, music and memories)
24	7.00pm	<i>The Beaux Stratagem</i> (NT Live)
29	6.30pm	<i>The Lego Movie 2014</i>
Telephone: 01223 712825 Web: www.sawstoncinema.org.uk		

STAPLEFORD GRANARY

10	7.45pm	Come and Sing! with Lucy Barlow
18	7.30pm	The Cambridge Connection Concert
21	5pm	Youth String Orchestra begins
21		Art Courses begin at Stapleford Granary
22	6pm	Autumn Nature Walk with Kevin Hand
22	5pm	Woodland Whistle Making
23	6pm	Clarinet Choir begins
Telephone: 01223 849004 Web: www.staplefordgranary.org.uk		

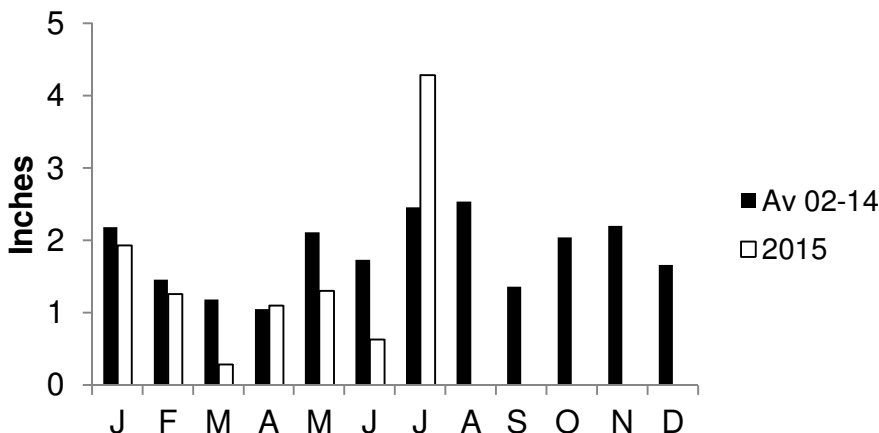
WANDLEBURY

15	9.30am–4	Teaching Orienteering Part 1 A one-day course for teachers run by a British Orienteering tutor. £80 per person.
Wednesdays		Nordic Walking with an experienced guide (Start time 1–3pm depending on speed)
Thursdays		Healthy walking (Start time 10am or 10.30am)
For information on these and other events see www.admin.cam.ac.uk/whatson		

UNIVERSITY OF CAMBRIDGE

1-25	James Faure Walker – Painting and digital works Alison Richard Building, Sidgwick Site, 7 West Rd.
1-16	<i>A damned serious business: Waterloo 1815</i> – University Library
1-27	Designed to impress: Highlights from the print collection – Fitzwilliam
1-30	Ruskin's Turners – Fitzwilliam
Telephone: 01223 243830 Web: www.cambridgeppf.org	

Great Shelford Village Rainfall 2015



NOTE

The *Great Shelford Village News* is published by the Editorial Committee, whose members are delighted to receive the many regular and occasional contributions that make it all possible. **The Committee accepts such contributions in good faith, but cannot take responsibility for the accuracy of information contained therein.** The Committee, of necessity, reserves the right to amend or reject items, for a variety of reasons. In these cases (unless the changes are minor), every reasonable effort will be made to contact the contributor to obtain agreement.

Editorial Committee

LOCAL ORGANISATIONS

Badminton (Little Shelford)	Rosie Cranmer		513572
Bowls Club	Wendy Seekings		843416
Brownies, Guides, Rainbows	Lisa MacGregor		843021
Bunch – Feast	Duncan Grey		842191
Carpet Bowls	Valda Finn		870802
Citizens Advice Bureau	Cambridge		0844 8487979
Community Association	(for booking Memorial Hall) Sheila Tilbury-Davis		844384
Country Market	Dorothy Doel		843946
Cricket Club	Mrs M Ellum		842394
Darts League	Mr D Matthews		845287
Football Club	Peter Ellwood		562733
Free Church			842181
Friends of Shelford Library	Daphne Sulston		842248
Garden Club	Helen Chubb		845032
Great Shelford Friendship Club	Cheryl Mynott		845435
Health Centre	Ashen Green, Great Shelford		843661
Mobile Warden Scheme	Jackie Noble (Wdn)	700920	Jenny Morris (Chair) 846332
Parish Church Bellringers	Ann Smith		577980
Parish Church Community Room	Mary Lester		842411
Parish Church Friends	Bob Doel		843946
Parish Church Sunday Club	Joanne Staines		07790 415732
Parish Church Wardens	Dianne Fraser	562731	Stella Nettleton 832290
Parochial Charities	Mary Lester (Clerk to the Trustees)		842411
Police	Non-emergency number		101
Rainbow Pre-School	Alison Tomlin		5 216603
Royal British Legion	Gillian Farrar		840947
Rugby Club	Colin Astin		842154
Sawston Sports Centre	The Village College		712555
Scouts and Cubs	Jillian Hardwick		840066
Scout & Guide HQ	Jenny Grey		842191
Shelford & Stapleford Strikers	Derek White		561753
Shelford Primary School	Alison Evans, Headteacher		843107
Shelford Support Group (transport to hospital etc.)	Mrs Wilkinson	843856	Mrs P Legge 843275
	Mrs Newman	842514	Mrs Carol Bard 571380
South Cambs DFAS	Sheila Tilbury-Davis		844384
Sunnyside Preschool Stapleford	Jane Doyle		707817
Sustainable Shelford	Mike Winter		07870 807442
Stapleford Choral Society	Adam Pounds		843468
Tennis Club	Lydia Seymour		07790 498875
Twinning Association	Penny Pearl		842483
U3A (Sawston Branch)	Mr D Cupit		871527
WI	Vanda Butler (Secretary)		561053
Youth Initiative	Ollie Leonard		07768 545915



*a great deal more
from your local store*



The Great Shelford Store:

- General Groceries
- Chilled Beers & Wines
- Fresh In-Store Bakery
- Newspapers & Magazines
- Photocopying Service
- Dairy Produce
- Cards & Stationary
- Fresh Meat
- Fresh & Frozen Products
- Confectionary
- Toilet Requisites
- Off-Licence
- Dry Cleaning Agent
- FREE Local Delivery

Mon-Sat: 7 am-7.30 pm
Sun: 7 am-2 pm

Tel: 01223 843307
33-35 Hinton Way

**JACKSON
COX**

B G STOREY, FBCO

OPHTHALMIC OPTICIAN
(OPTOMETRIST)

30a WOOLLARDS LANE
GREAT SHELFORD

01223 840441

**Great Shelford
Dry Cleaners**

Dry Cleaning
Laundry
Alterations

01223 844344

**31 High Street
Great Shelford**

(opposite the Co-op)

kitchens, bedrooms,
bookcases, carpentry
and a lot more

designer quality at affordable prices
no obligation, free estimates and design

07727800330 ☎ 01223 968696
www.arthanfurniture.co.uk

go for a friendly price!

local references available

**LAY ELECTRICAL
Sales and Repairs**

Washing machines
Vacuum Cleaners
TV, Video, etc

66 High Street, Great Shelford
01223 842488

**LOCKS
LADIES
HAIRSTYLISTS**

*Professionals
for your hair*

all ages welcome

Tel: 842166
Mob: 07932600824
67a London Rd, Stapleford